



South Jersey Port Corporation

An Agency of the State of New Jersey

Southern New Jersey's International Seaports

Kevin Castagnola, Executive Director & CEO

Overview



- **About SJPC**
- **Facilities**
- **USEPA Grants – Repowering**
- **DVRPC CMAQ Grant – Diesel Forklift Replacement Program**
- **Waterfront South Traffic Improvements**
- **NJDOT Signage**
- **Waterfront Amphitheater – Parking**
- **Battleship NJ Memorial & Museum**
- **Camden Maritime & Shipbuilding Museum**

South Jersey Port Corporation



SJPC's enabling legislation established a Port District comprised of the counties of Mercer, Burlington, Camden, Gloucester, Salem, Cumberland and Cape May and all lands and waters in the Delaware river and bay in which the agency may act in the establishment, acquisition, construction, rehabilitation, improvement, operation and maintenance of marine terminals.

Mission Statement: To be in a leadership position by providing services and facilities to accommodate the transportation of goods and commodities by water and land to foster regional economic development for the benefit of our Port District and;

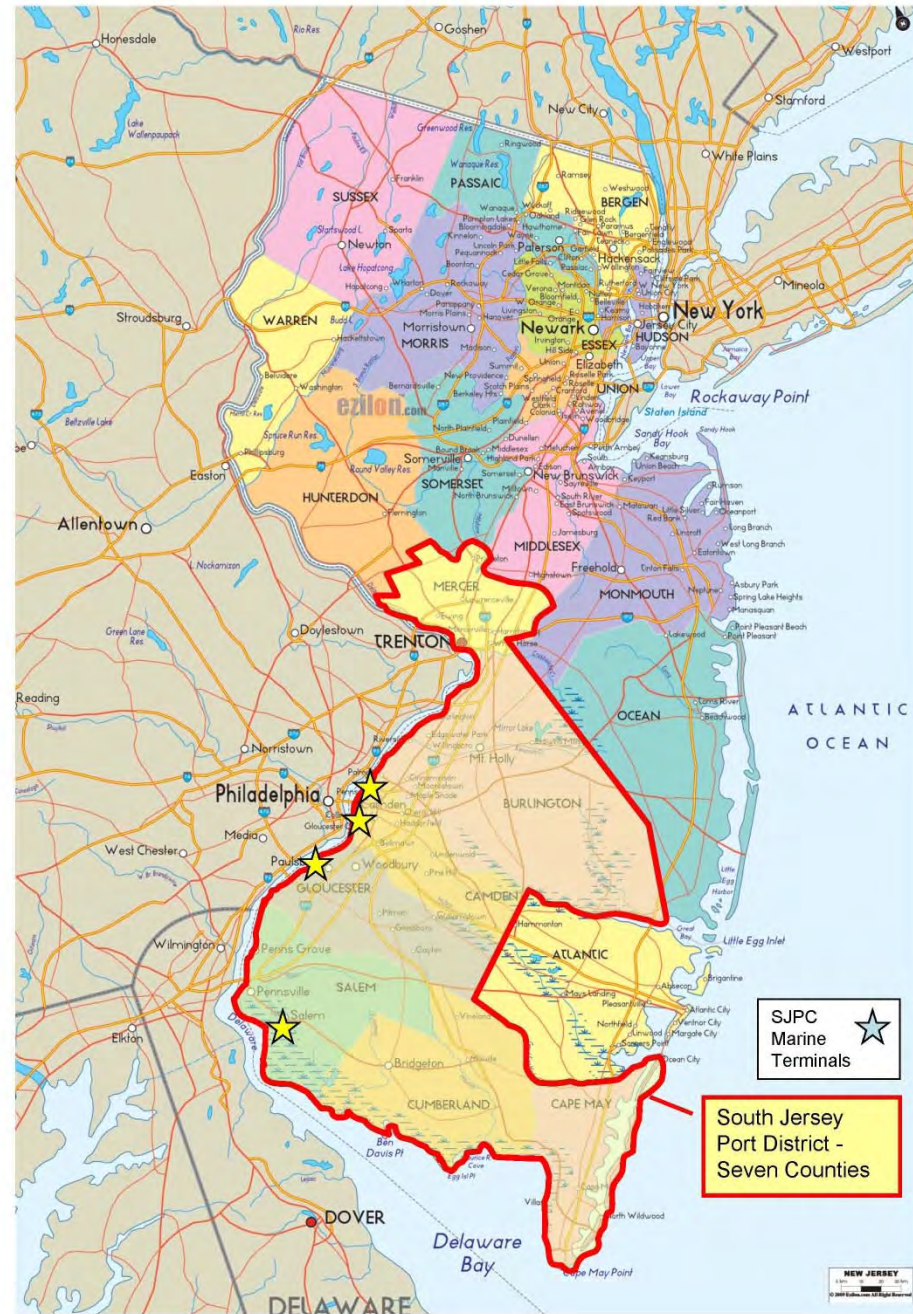
To develop and support waterborne commerce within the Port District and to assist and support the development of business congruent with import and export services and;

To invigorate and create a favorable economic climate that fosters employment and income for our residents and our state.

SJPC Port District

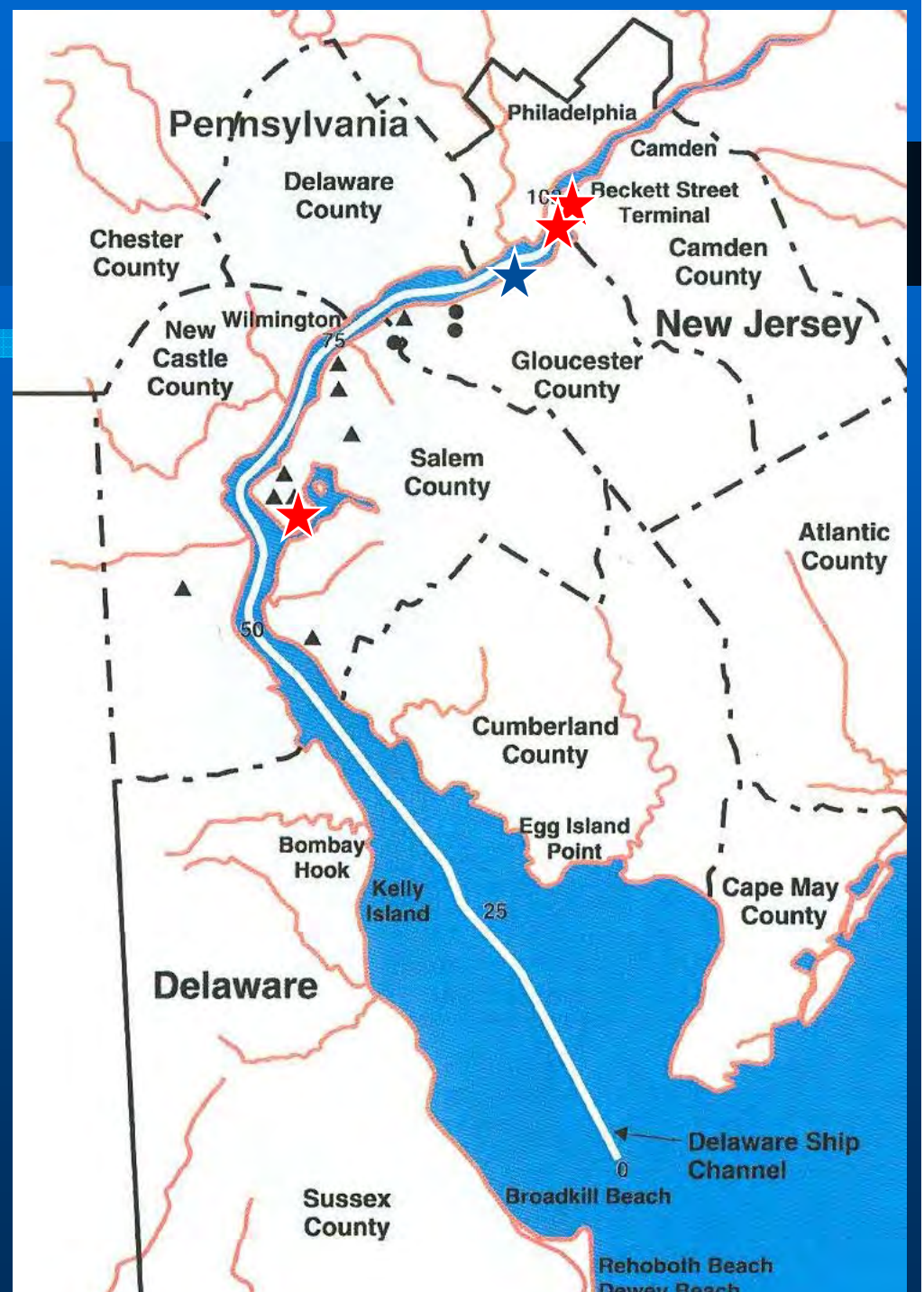
SJPC's Port District is comprised of seven counties along the Delaware River:

- Mercer
- Burlington
- Camden
- Gloucester
- Salem
- Cumberland
- Cape May

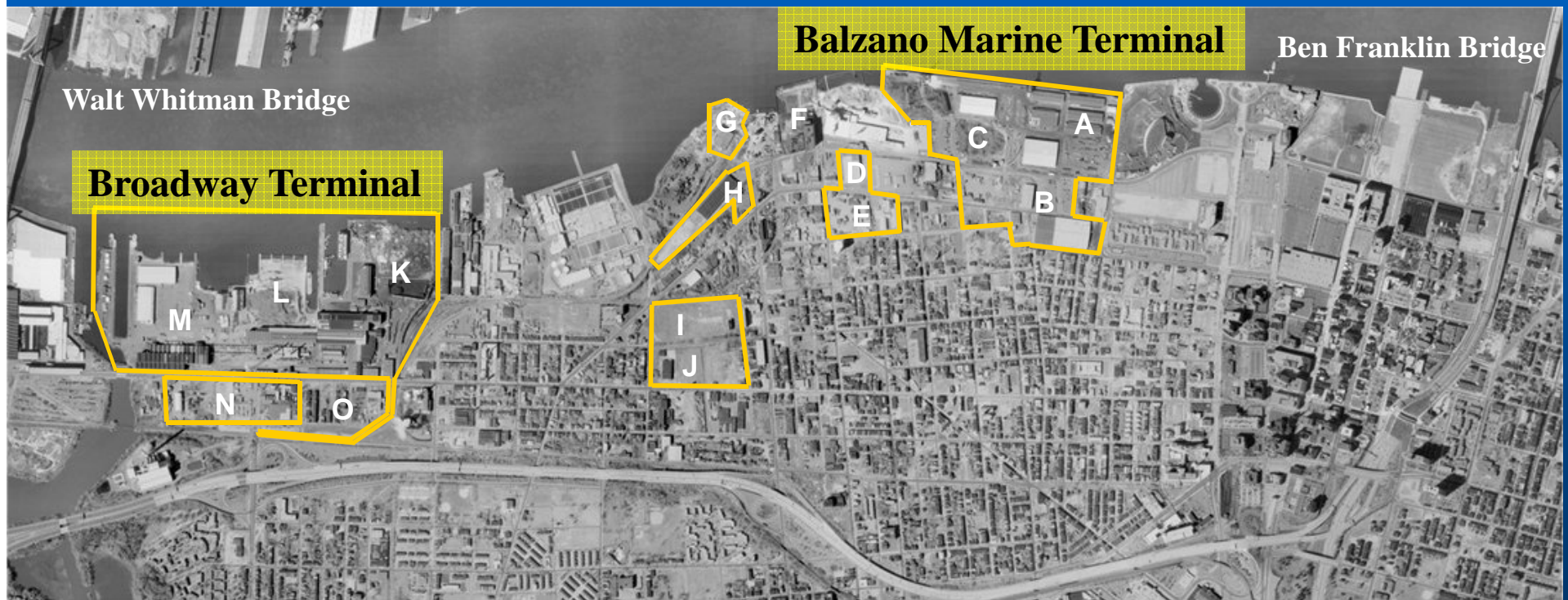


SJPC Terminal Locations

- Balzano Marine Terminal
- Broadway Terminal
- Salem Marine Terminal
- Paulsboro Marine Terminal
- Foreign Trade Zone #142 – Seven Counties



The Port of Camden District

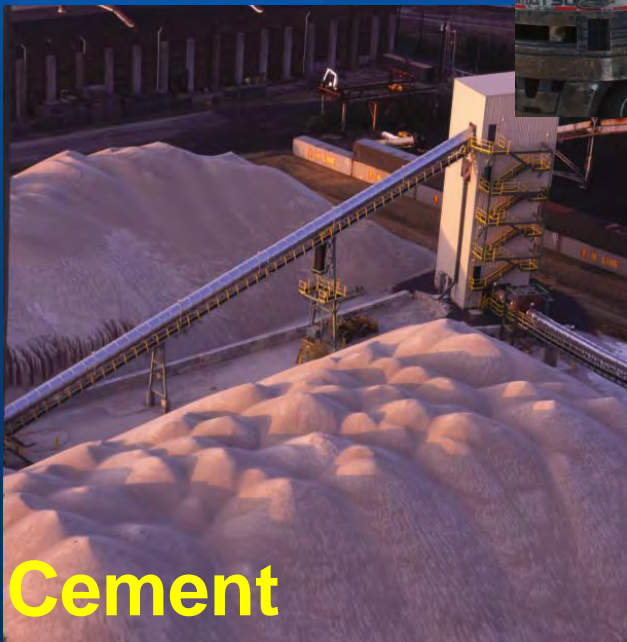




Steel



Cocoa Beans



Cement

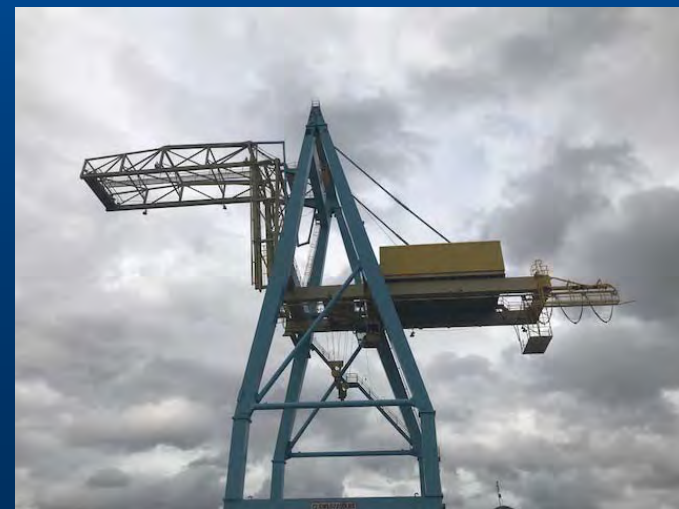


Wood Products

USEPA Program



Environmental projects include installation of electric crane, diesel emission controls on yard equipment, repower crane engines with new, clean running engines through USEPA grants.



DVRPC CMAQ



A recently awarded \$1M DVRPC CMAQ grant through the NJDEP, will replace up to 10 older diesel forklifts with new, cleaner running forklifts.



Waterfront South



SJPC has been a partner with Waterfront South Connections.

Waterfront South Connections is a group of neighbors and local organizations that want to create safer, more attractive access to the Waterfront South's valuable Delaware Waterfront, as well as local amenities such as Phoenix Park, Liney Ditch Park, Center for Environmental Transformation, the Father Michael Doyle Fishing Pier, Camden FireWorks and the Camden Shipyard Museum.



The goals are:

Create safer and more attractive access to the Delaware River Waterfront

Including creating the connection between Phoenix Park and Liney Ditch Park

Get the community to use Phoenix Park and develop ownership of the land

Education and programming

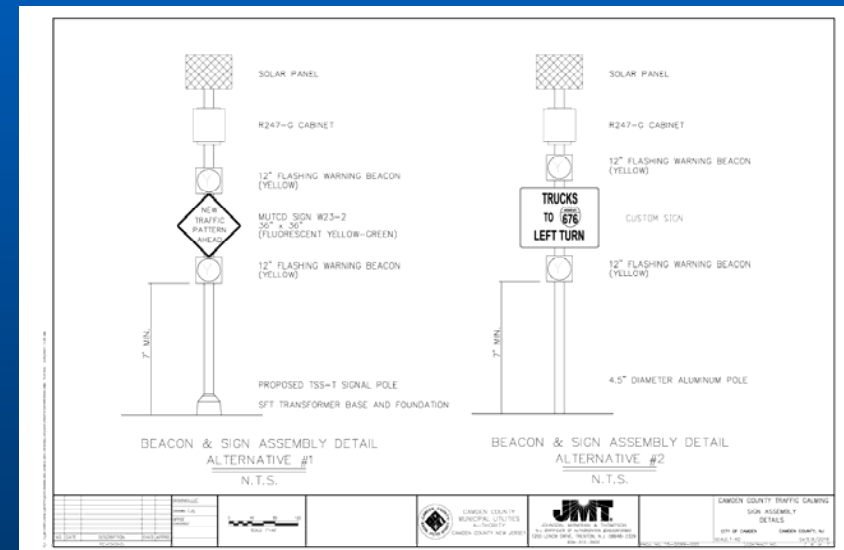
Especially calling attention to the City of Camden's combined sewage flooding problem and potential solutions

Advocate for city and regional trail connections

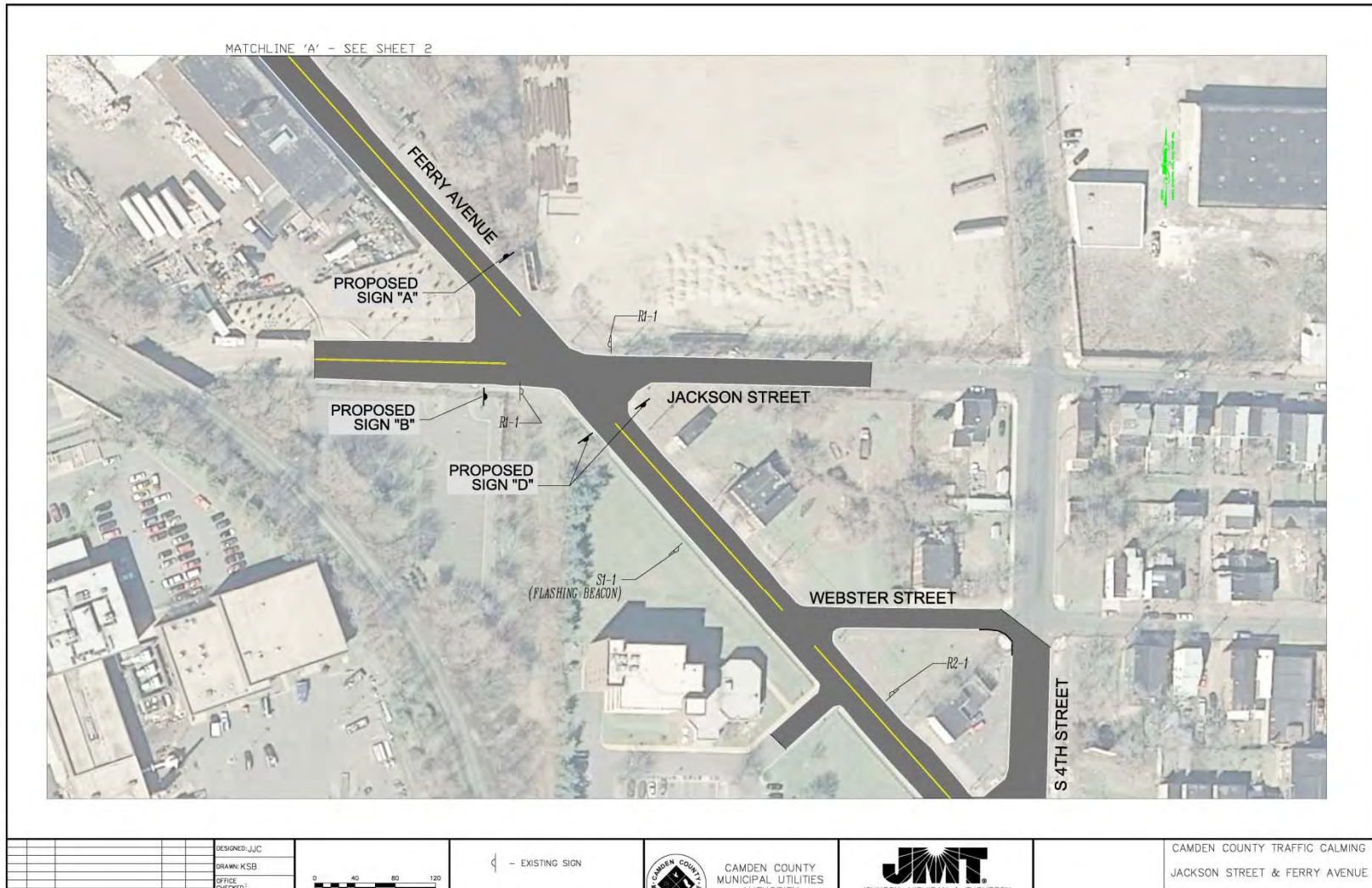
TRUCK ROUTING



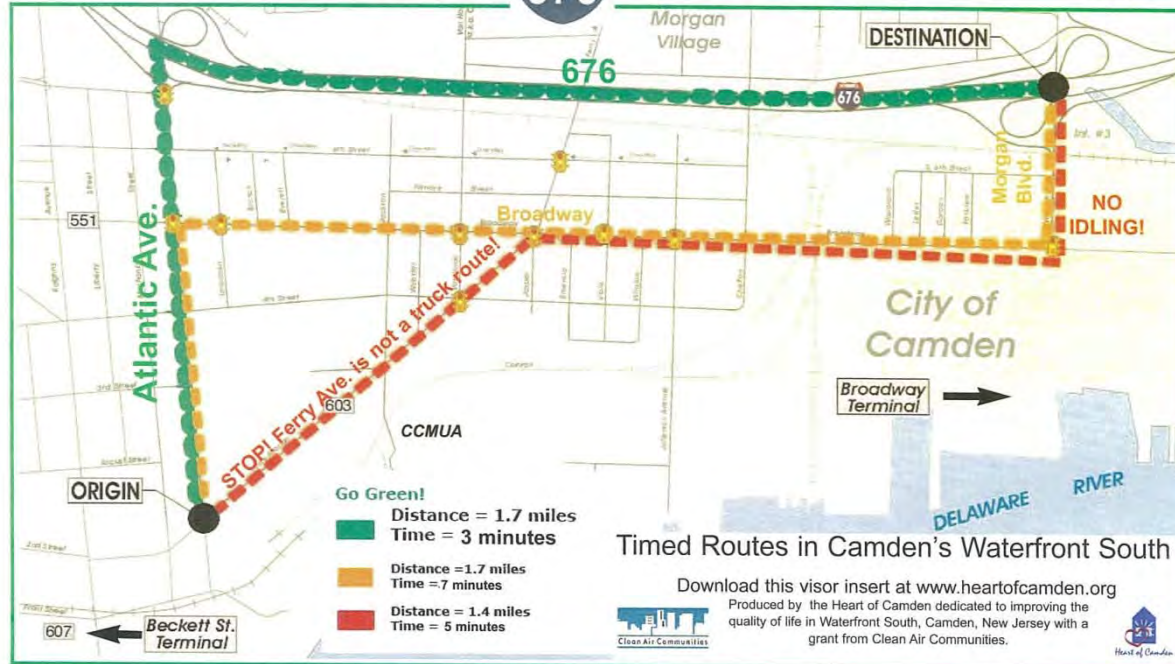
SJPC has been a partner with the Camden County Municipal Utilities Authority, the City of Camden and the NJDOT to improve the truck routing with new highway/roadway signage to aid in limiting the routes port and commercial traffic use, reducing impacts to the neighborhoods and improving transportation efficiencies.



TRUCK ROUTING



In Camden, NJ Saves Time and Money!



Avoid the constant stop and go and the potential for an accident on Camden City's streets.

Take Atlantic Ave. from 2nd St. and Ferry Ave. to I-676 and cut travel time by 1-1/2 to over 3-1/2 minutes.

Use I-676 to travel between South Jersey Port's Beckett St. and Broadway terminals.

Curb Exposure to Diesel Exhaust!

Diesel Exhaust is an air pollutant made of vapors and fine particles.

Exposure may result in cancer, aggravated asthma, and other negative health effects.

Children breathe up to 50% more air per pound of body weight than adults making them more vulnerable to respiratory problems.

Do Not Idle!

- NJ law prohibits idling for more than 3 minutes (N.J.A.C. 7:27-14&15).
- 10 seconds of idling uses more fuel than turning the engine on and off.
- Trucks consume as much as one gallon of fuel per idling hour.
- Reduce fuel and engine maintenance costs.
- When you are out of the seat the tractor should be off.
- Use Idle Reduction Technologies - information is available from the NJ DEP Diesel Risk Reduction Team (609)-292-7953 / StopTheSoot.org or the NJ Motor Truck Association.

Bypass Local Roads!

- Keep off roads where children are at risk of exposure.
- Avoid roads with stop lights, stop signs, congestion, and hazards.
- Ferry Ave. between Broadway and Jackson St. is not a truck route.
- See other side for fastest truck route in Waterfront South, Camden, NJ.

SJPC issues Route Placards to visiting Trucks.

Conceptual I-676 Signage Improvements

for

Broadway, Balzano & Gloucester Terminals

Holtec International

City of Camden & City of Gloucester

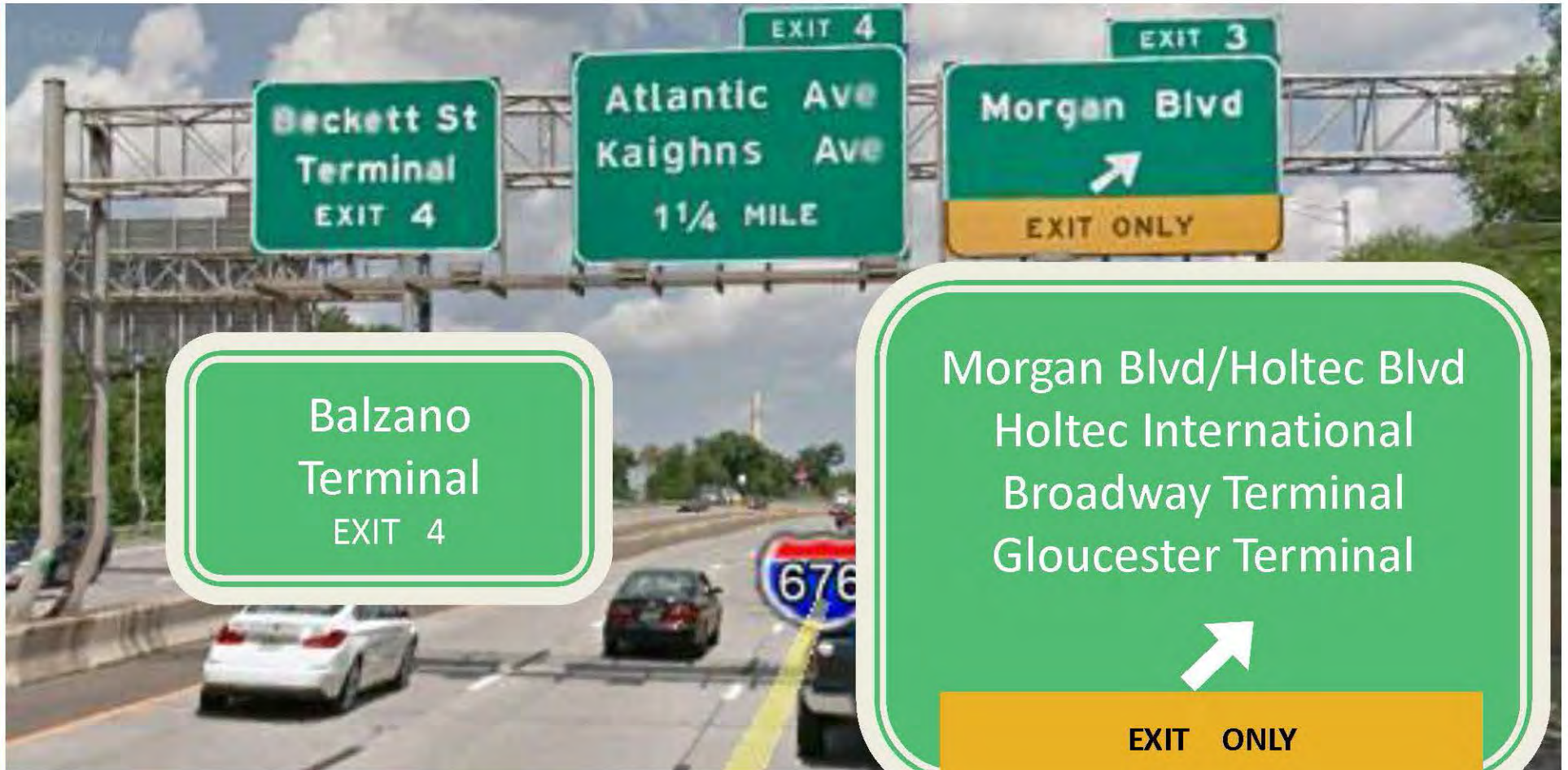
Camden County, New Jersey

February 2015

Last Modified: May 2017



1256 North Church Street
Moorestown, NJ 08057
P 856-772-6700
F 856-722-0175
www.tandmassociates.com



NB – at Exit 3

**Recommended Change: Change “Beckett St”
to “Balzano”**

**Add “Broadway Terminal”
Add “Gloucester Terminal”
“Holtec Blvd”
“Holtec International”
to Exit 3 sign**



1256 North Church Street
Moorestown, NJ 08057
P 856-772-6700
F 856-722-0175
www.tandmassociates.com



SOUTH JERSEY PORT
TERMINALS
BALZANO USE EXIT 4
BROADWAY USE EXIT 3
GLOUCESTER USE EXIT 3
HOLTEC INTERNATIONAL USE EXIT 3

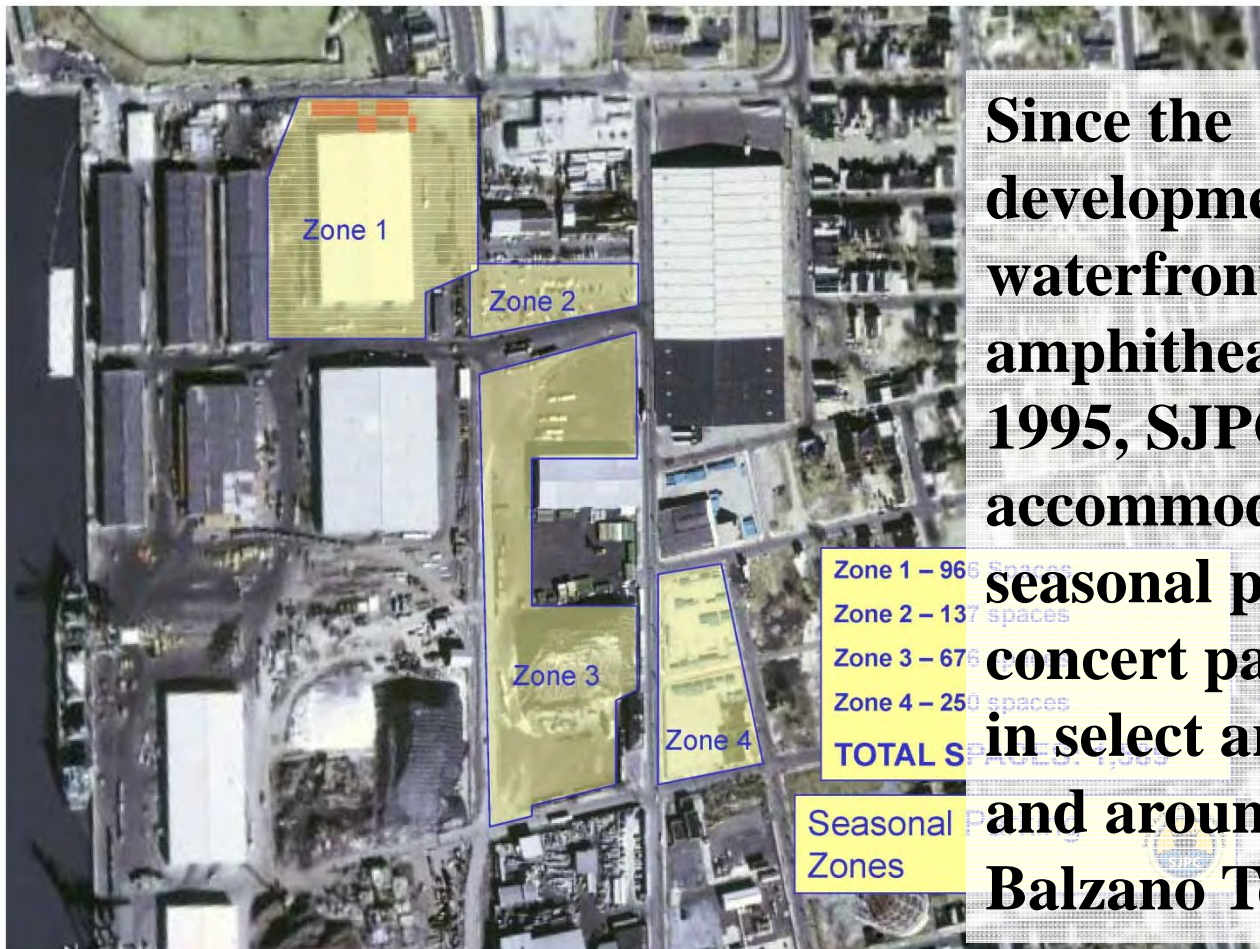
SB – just after Ben Franklin Bridge

- Recommended Change:**
- 1) Enlarge sign & improve to prominent location
 - 2) Add "GLOUCESTER USE EXIT 3"
 - 3) Change "BECKETT ST" to "BALZANO"
add "HOLTEC INTERNATIONAL USE EXIT 3"



1256 North Church Street
Moorestown, NJ 08057
P 856-772-6700
F 856-722-0175
www.tandmassociates.com

BB&T Center



Since the development of the waterfront amphitheater in 1995, SJPC has accommodated seasonal parking for concert patronage, in select areas in and around the Balzano Terminal.

Battleship NJ



SJPC was a key partner in bringing the USS New Jersey to Camden and provides support for its operation within the SJPC's riparian waterway.

Camden Maritime & Shipyard Museum



The Camden Shipyard & Maritime Museum was founded in 2008 to transform an 1893 historic church into a local maritime history museum and home for the Urban BoatWorks program, a vibrant craft program that now serves over 100 students per week. The museum opened in 2016.

SJPC, with the conversion of the former NY Shipbuilding Corporation facility, remains a partner in the development of this Waterfront South museum.



Salem Port Complex



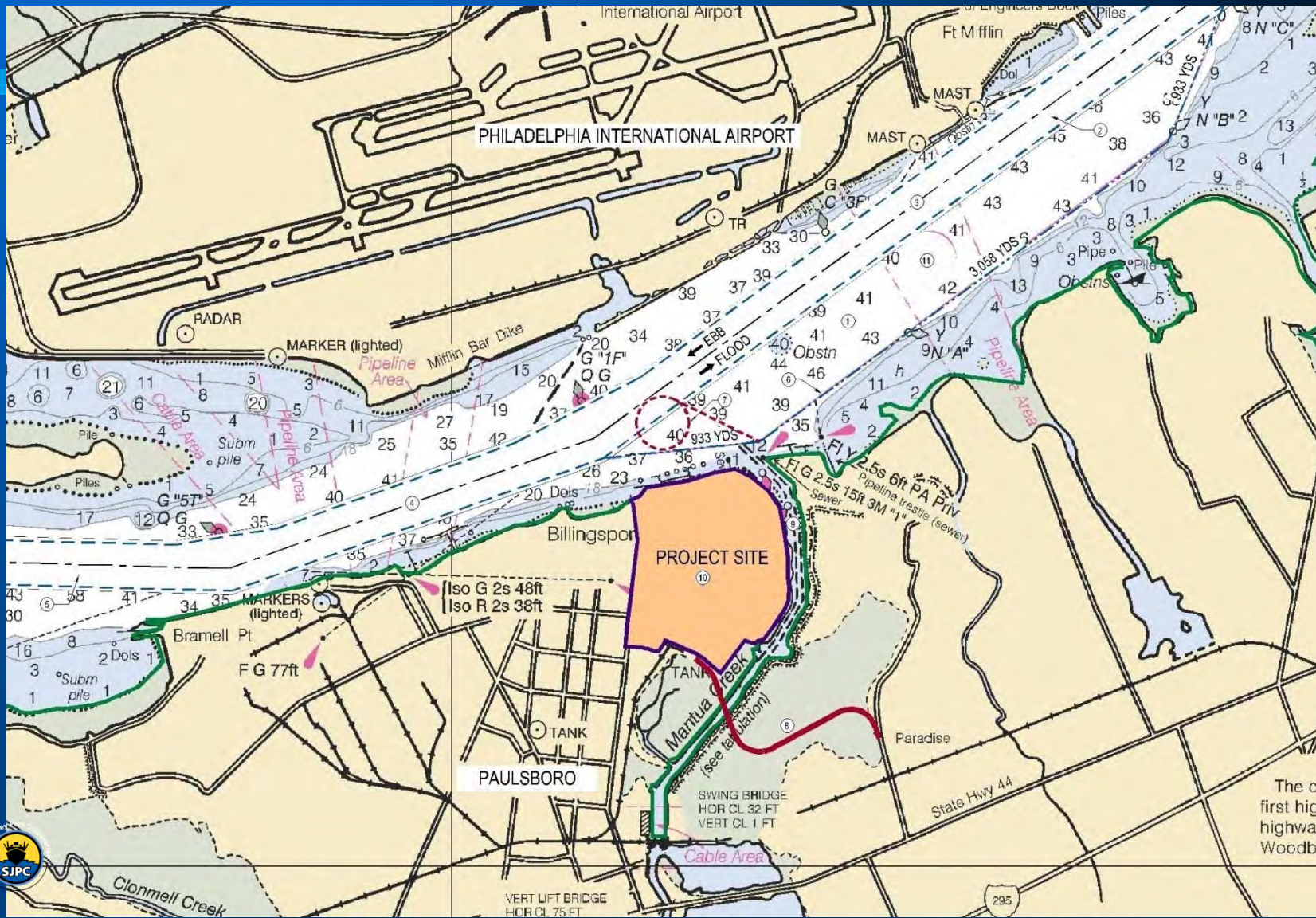


South Jersey Port Corporation

Paulsboro Marine Terminal

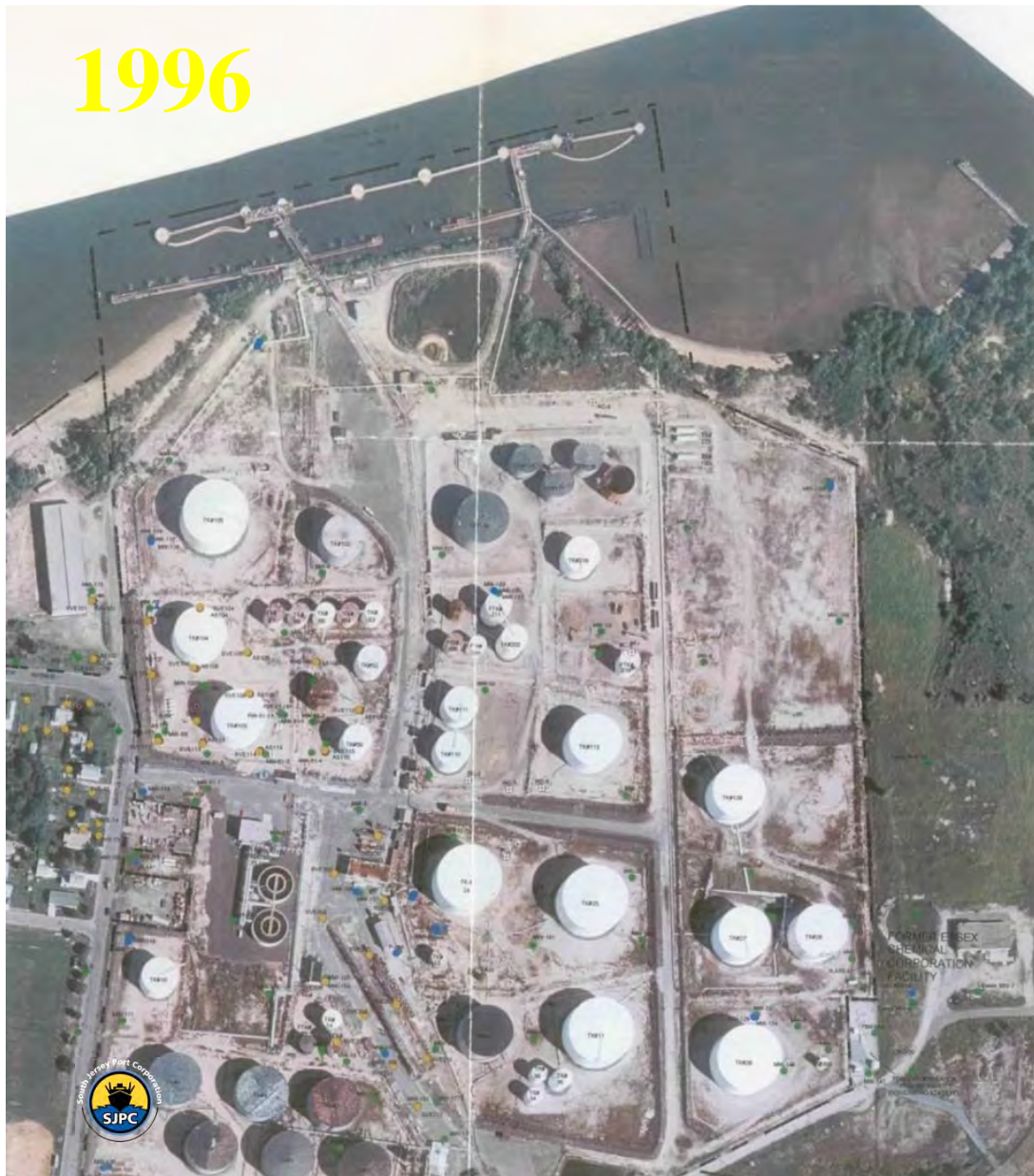


Port of Paulsboro (RM90) – Location Plan Marine Terminal and Access Road & Bridge



Paulsboro Marine Terminal

1996



2006

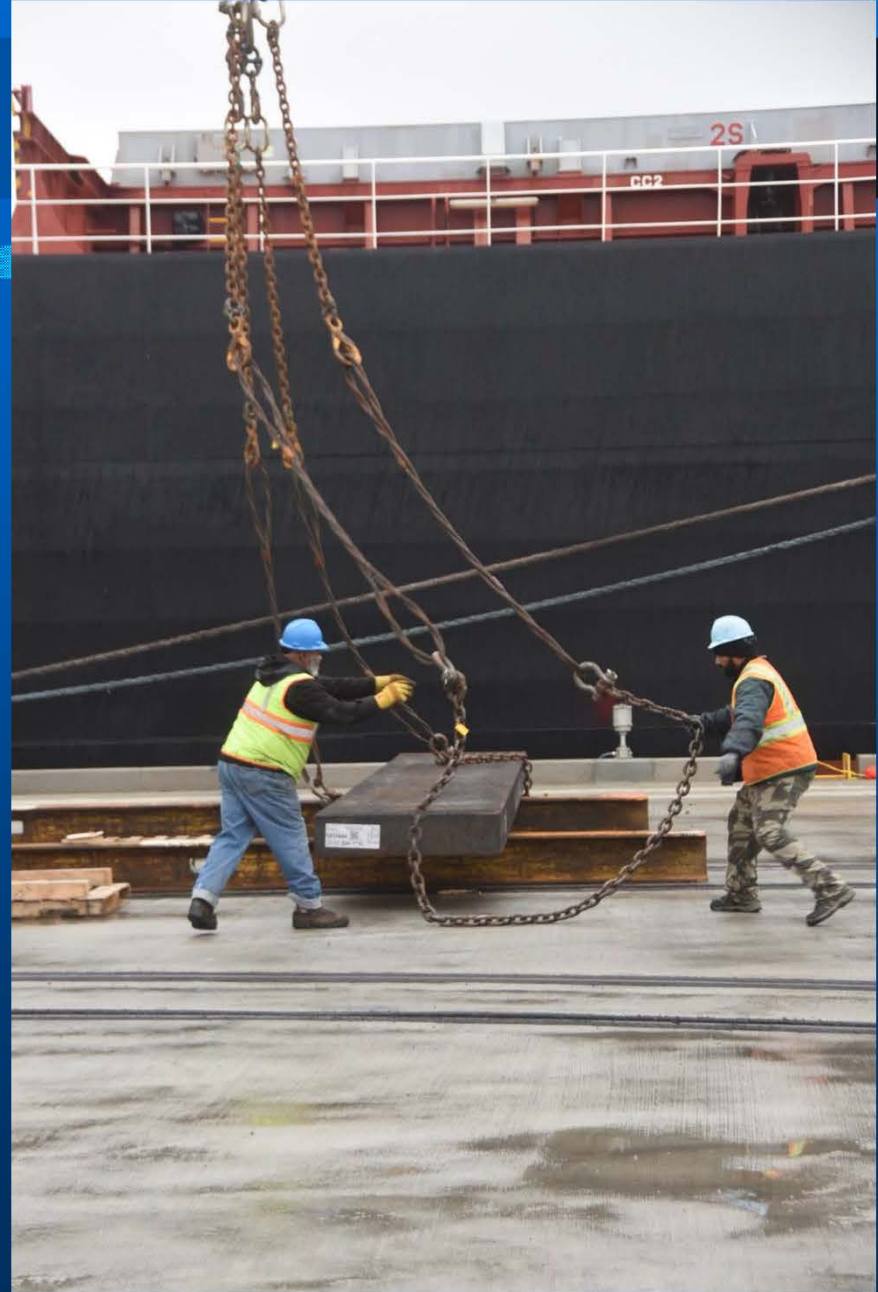


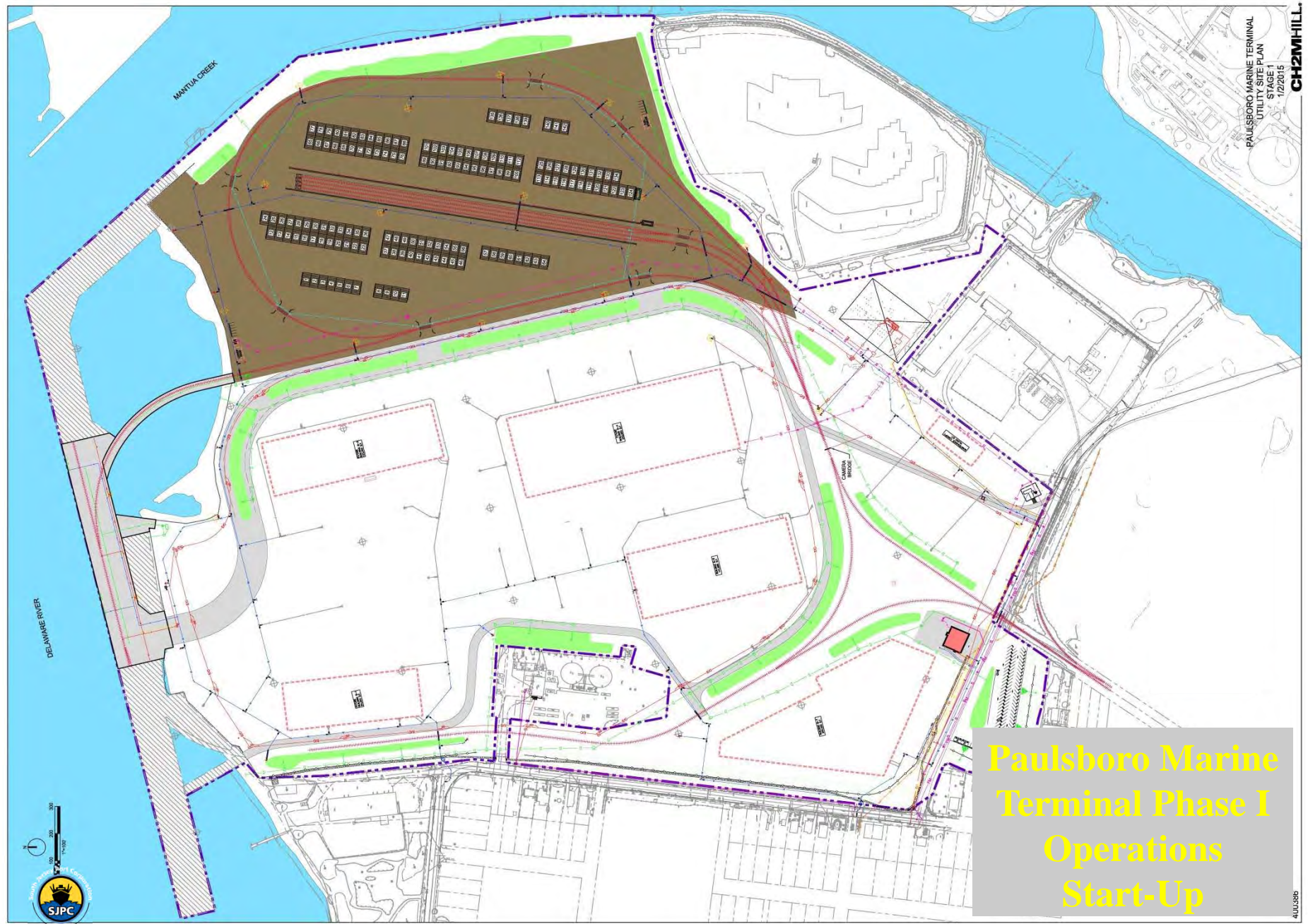


**M/V Doric Warrior
First Ship at PMT
March 2, 2017**

**Import Steel Slabs – NLMK
Average 3 ships per month
1.5 millions s/tons annually**







PAULSBORO MARINE TERMINAL
UTILITY SITE PLAN
STAGE 1
1/2/2015

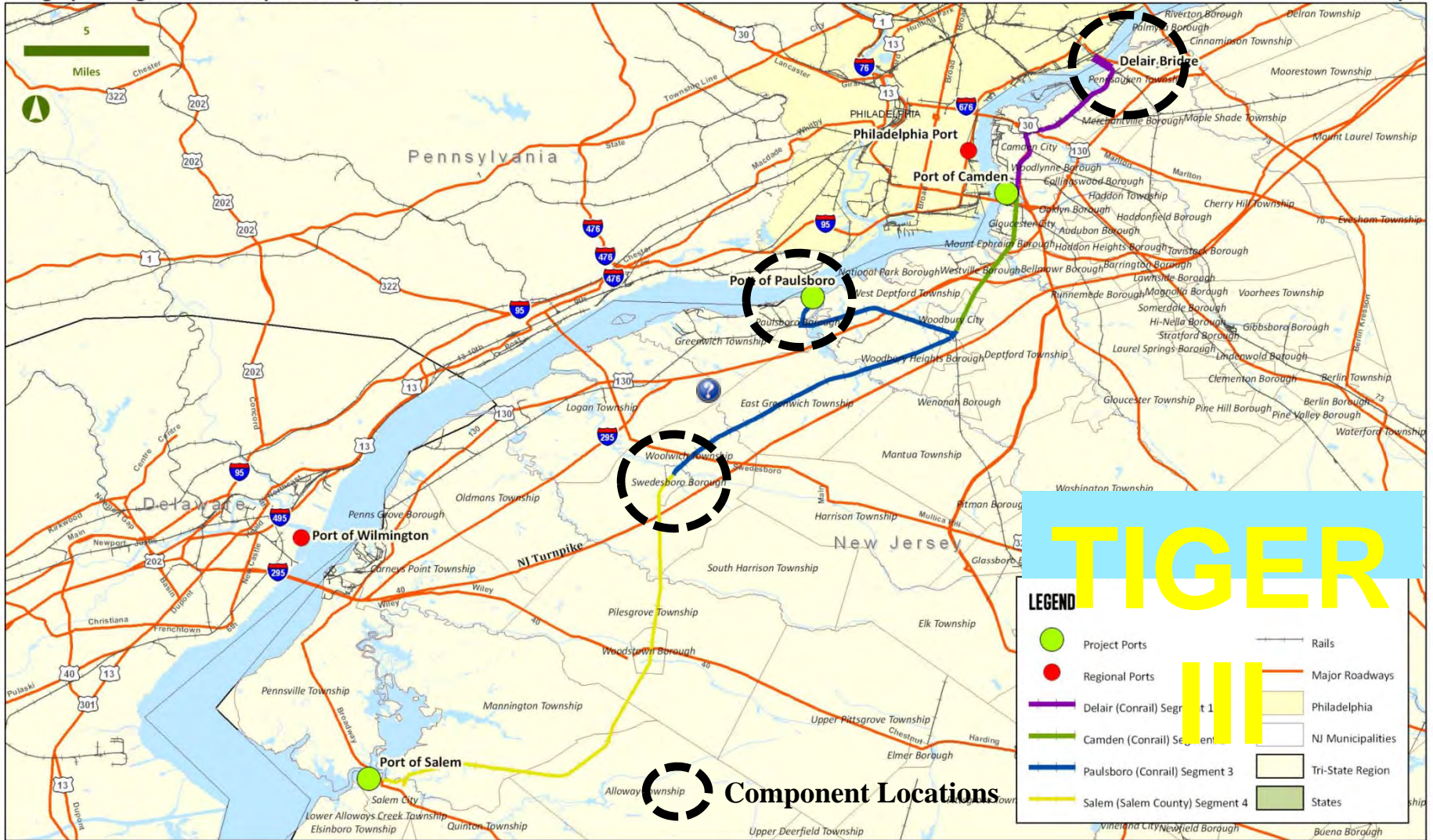
CH2MHILL

**Paulsboro Marine
Terminal Phase I
Operations
Start-Up**

4103385

TRI-STATE REGIONAL INTERMODAL RAIL/PORT IMPROVEMENT PROGRAM

Geographic Segments of Proposed Project



TIGER

LEGEND

- Project Ports
- Regional Ports
- Delair (Conrail) Segment 1
- Camden (Conrail) Segment 2
- Paulsboro (Conrail) Segment 3
- Salem (Salem County) Segment 4
- Rails
- Major Roadways
- Philadelphia
- NJ Municipalities
- Tri-State Region
- States

Component Locations



TIGER III

Intermodal Rail / Port Improvement Project



- **Component I - Conrail:** Delair Bridge Approach Trestle Rehabilitation
- **Component IIa – Salem County:** Oldmans Trestle Rail Bridge
- **Component IIb – Salem County:** Salem Running Track Rehabilitation
- **Component III – Paulsboro Marine Terminal:** At-Grade Rail Infrastructure
- **Component IVa, b, & c – Camden and Salem:** Additional Running Track Rehabilitation
- **Component IVd – Paulsboro Marine Terminal:** Rail Trestle

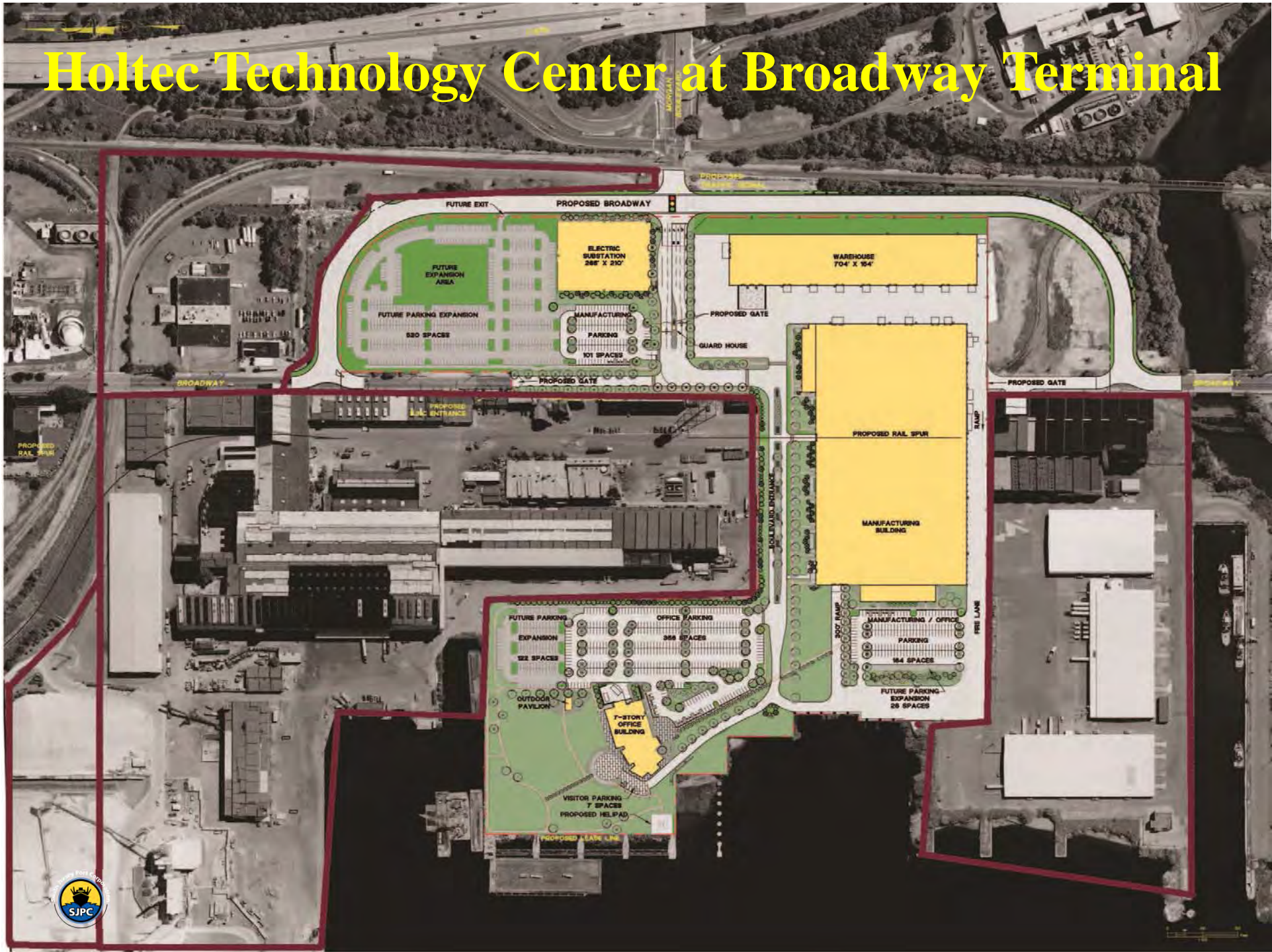


South Jersey Port Corporation



**HOLTEC TECHNOLOGY
CENTER DEVELOPMENT AT
BROADWAY TERMINAL**

Holtec Technology Center at Broadway Terminal







Holtec Technology Campus Located on the Delaware River Camden, New Jersey

Corporate
Technology Center



Heavy
Manufacturing Plant



Light
Manufacturing Plant



Property Line



South Jersey Port Corporation

