



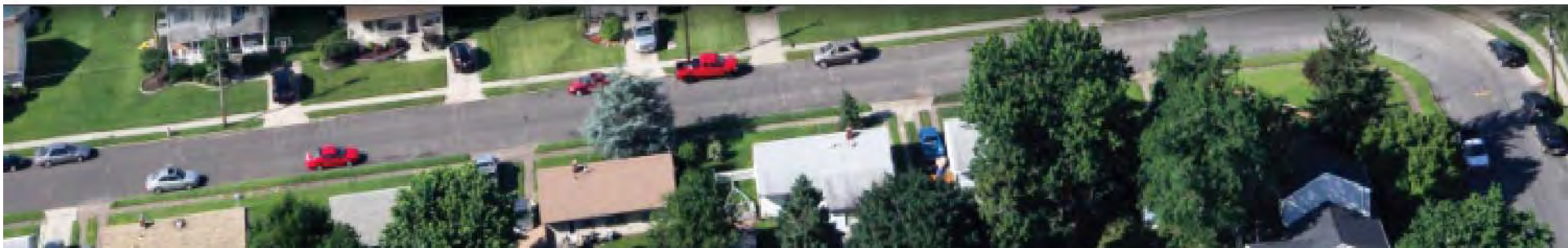
Transportation
Improvement
Program

TIP

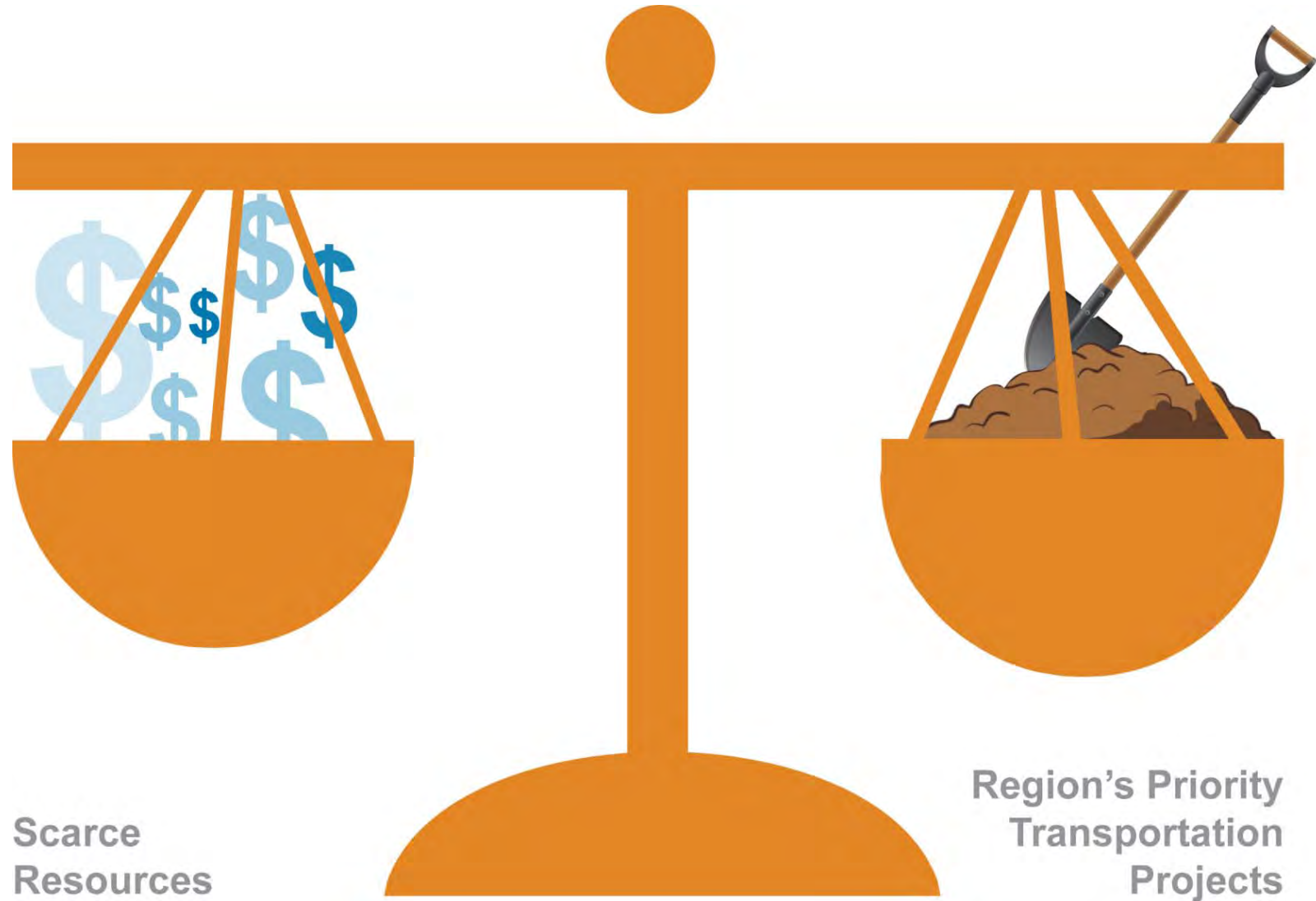
Transportation Improvement Program

- What is It?
- Why Does it Matter?
- How Does a Project Get on the TIP?
- Other Funding Opportunities

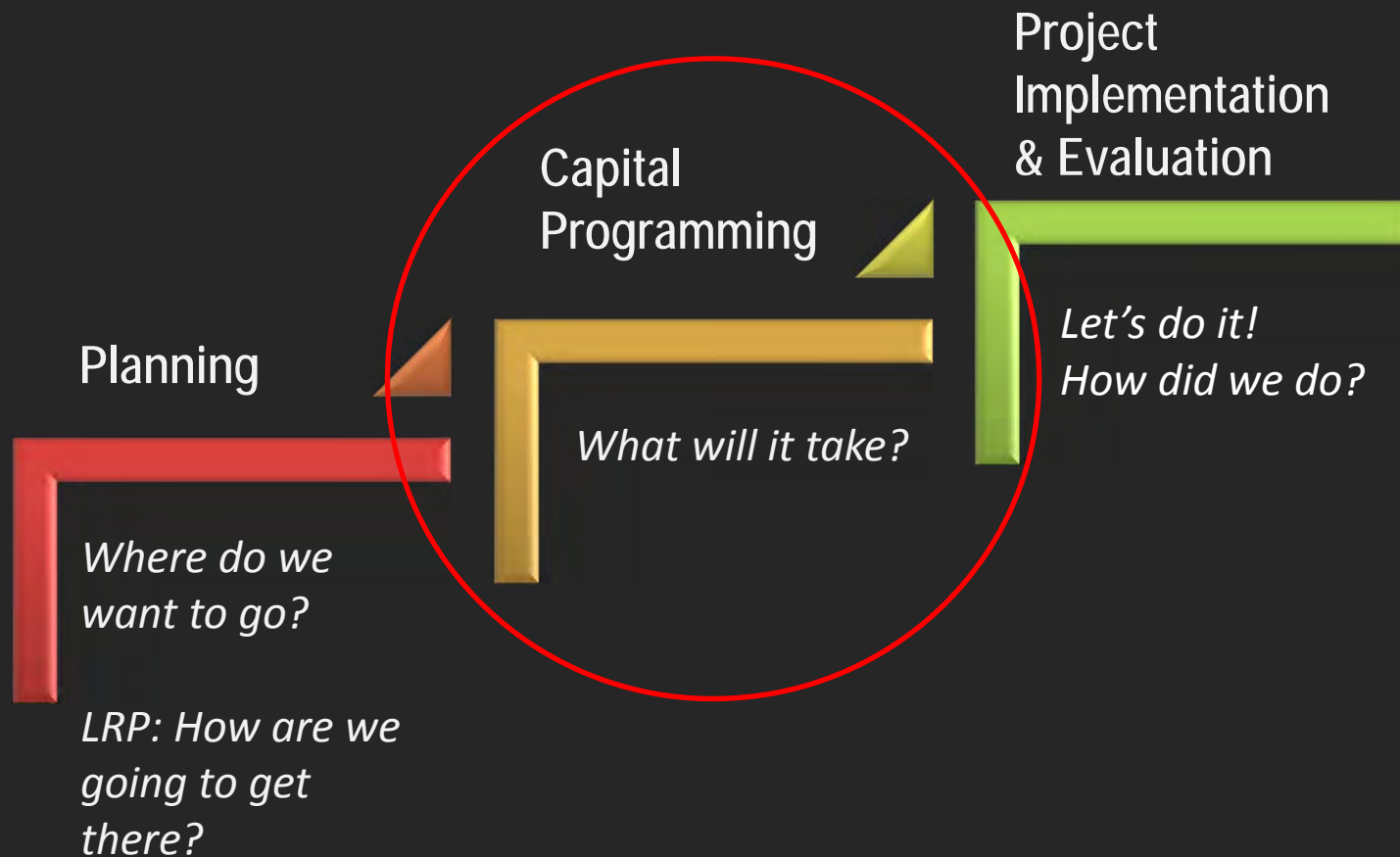
October 2017



Regional Decision Making



TIP = Capital Programming



2 DVRPC Regions = 2 TIPs



What is the TIP?

- ▶ Financially constrained infrastructure program
- ▶ Near-term expression of Long-Range Plan
- ▶ Multi-modal improvements
- ▶ Best estimate of project schedules and costs;
- ▶ Not a guarantee of funds or implementation
- ▶ Required for federal funds



Roadway Improvements as part of Haddon Avenue Transit Village



Existing



Proposed

What is the TIP?

DVRPC FY2016-2019 TIP for NJ

New Jersey Highway Program

Burlington

DB# 91315

New Bridge over Happy Creek

LRPID: 13

NEW

AQCODE: S19

This project will replace the decks of the New Bridge over Happy Creek structure. Substructure repair will be performed on the latter structure. New sidewalks and bike lanes will be added. Pavement resurfacing will be included within project limits.

CMP: Not SOV Capacity Adding

Municipalities: Palmyra Borough

DVRPC Planning Area: Developed Community

CIS Program Subcategory: Bridge Preservation

CIS Program Category: Bridge Assets

Project Manager: Nawk, Andrew

Indicators of Potential Disadvantage: 0

Mileposts: 9.13

Sponsor: NJDOT

Improvement Type: Bridge Repair/Replacement

Phase	Fund	TIP Program Years (\$ millions)				Later Fiscal Years (\$ millions)					
		2016	2017	2018	2019	2020	2021	2022	2023	2024	2025
CON	STP-Stu	2.000									
Fiscal Year Total		2.000									
		Total FY2016-2019			2.000	Total Later FY2020-2025					

Why is the TIP Important?

Developing and maintaining the Transportation Improvement Program makes the region eligible to receive and to spend federal transportation dollars.

PA and NJ TIP = Over \$7 Billion over 4 years



FY2017 TIP for PA – \$5.4 Billion

- ▶ 320 Regional Highway projects totaling close to \$2 Billion
- ▶ 30 projects funded by \$578 million provided by the Statewide Interstate Management Program (IMP) for I-95 and I-76 Reconstruction projects
- ▶ 30 Transit projects totaling \$2.8 Billion



FY2018 TIP for NJ – \$2 Billion

150+ Highway and Transit projects in the DVRPC NJ region

- 83 Highway Projects (totaling \$1.3 Billion)
- 53 Transit Projects (totaling \$723 million)
 - ❖ 40 NJ TRANSIT projects totaling \$650 million
 - ❖ 13 DRPA/PATCO projects totaling \$72 million

+ 23 “Study and Development” projects
(Local LCD in the DVRPC Region & NJDOT Statewide)

+ 107 in NJDOT Statewide Program > \$4.2 Billion









How does one get a project on the TIP?



Identify the Need/Problem

- ▶ Regional long range plan or other regional studies
- ▶ Management systems analyses
- ▶ Studies conducted by Municipality, County, DVRPC, transit operators, DOT's, or consultants
- ▶ County prioritized needs inventories
- ▶ Local officials
- ▶ Citizen complaints,
- ▶ State initiatives (like a freight plan!)

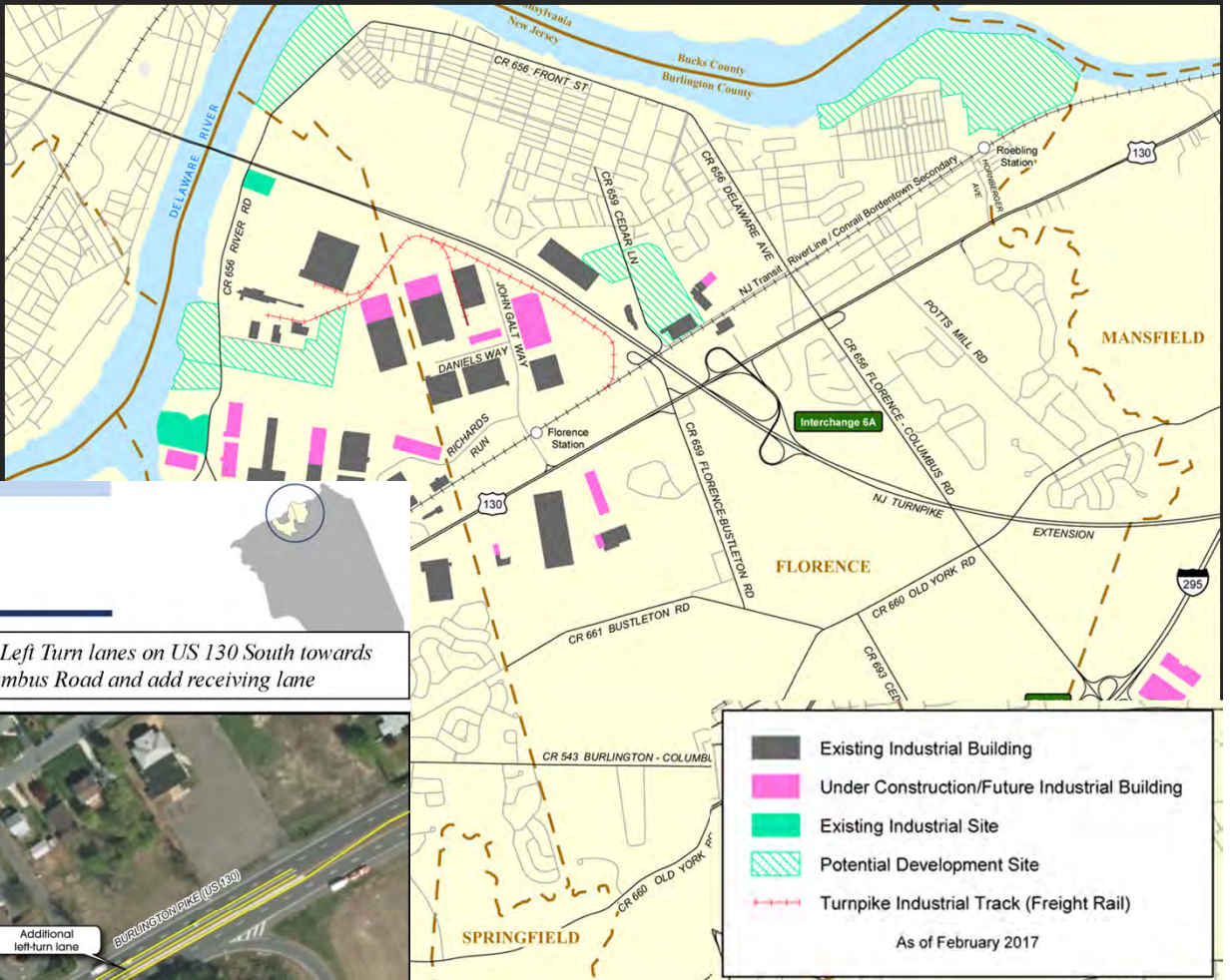


There is a lot of Homework Involved...

- ▶ Get involved early in the process
- ▶ Discuss with locals, County, DOT, Transit Operator and get support
- ▶ Get others to understand the problem, learn how it fits in with what others are doing
- ▶ Conduct preliminary research
- ▶ Build the case, identify flaws or opposition



Route 130 and CR 656/Florence Columbus Rd. -BurlCo



Proposed Improvement

4-a: Westbound Florence – Columbus Road approaching US 130: new right-turn ramp to US 130 north

4-b: Add dual Left Turn lanes on US 130 South towards Florence-Columbus Road and add receiving lane



And more Homework....

- ▶ Counties or Transit Operators or DOT's must submit projects unless an open competitive program
- ▶ Identify or Provide any required matching funds
 - Get support and agreement to match
 - Or, arrange local / private funds



Consider...

- ▶ Is it consistent with the goals of the DVRPC Plan
- ▶ Does it fit within the strategic financial policy of the DVRPC Long Range Plan?
- ▶ How far has the project progressed through the planning process?
- ▶ How critical is the need?
- ▶ What is the county's priority?
- ▶ Are there strong local commitments?
- ▶ Is there significant local opposition?



TIP DEVELOPMENT TIMELINE

1.



SUMMER/FALL

DVRPC's **TIP Subcommittee** reviews/discusses projects, costs, and schedules, including priorities/concerns.

2.



FALL/WINTER

DVRPC, the **state DOT**, and **transit agencies** work to constrain the TIP according to expected resources, projected needs, and feedback from **member governments**.

3.



WINTER

MPOs and **member governments** review the constrained draft TIP and work with the **state DOT** and **transit agencies** to address issues.

4.



SPRING

The draft TIP is revised, per **MPO** and **member governments'** review and comments. Air Quality Conformity Analysis also occurs.

5.



SPRING/SUMMER

Public comment period.

6.



SUMMER

The **DVRPC Board** adopts the Draft TIP with the list of recommended changes. **DVRPC** then submits the document to the **state DOT** to be included into the STIP.

7.



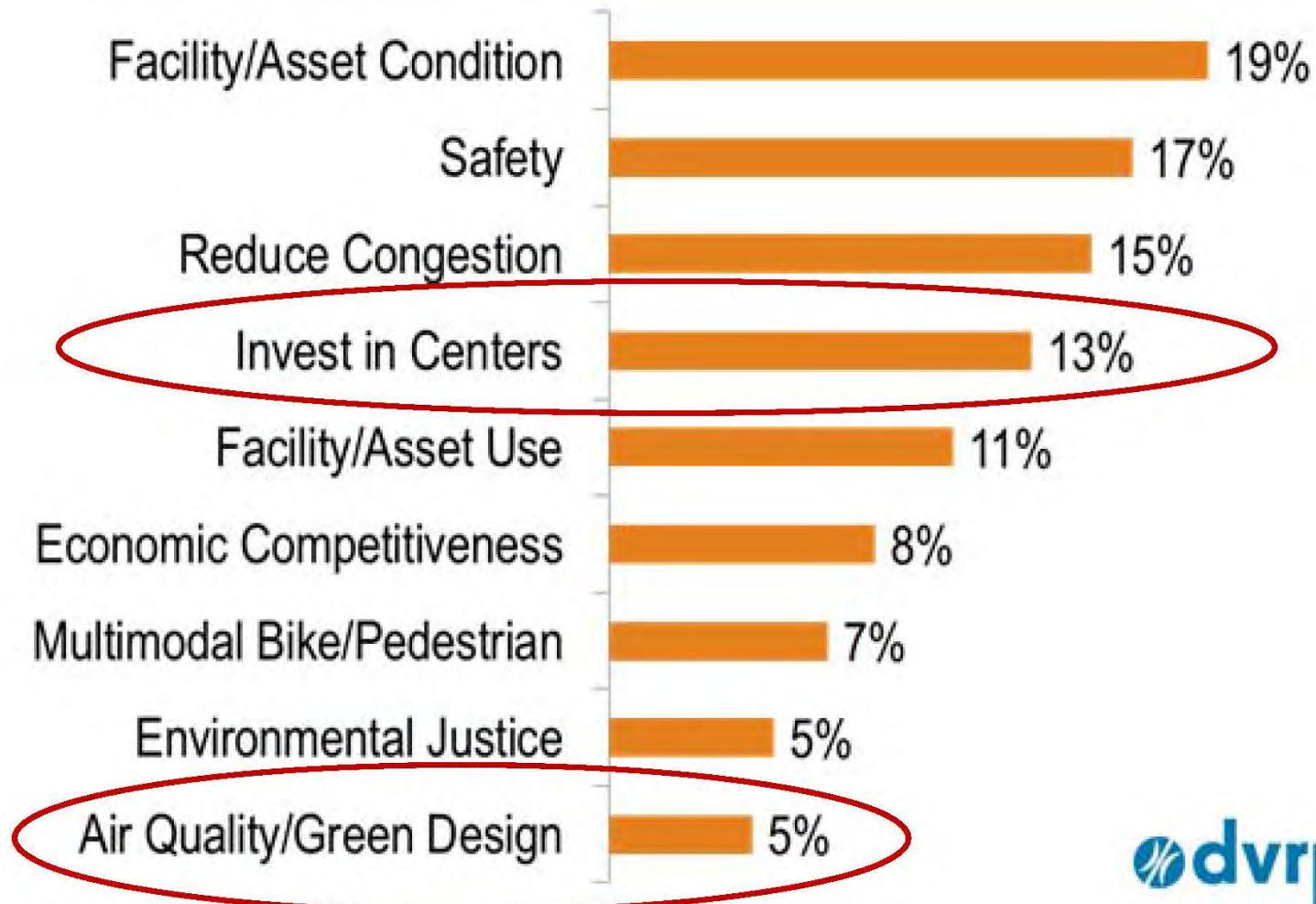
FALL

STIP approvals by **FHWA** and **FTA**; current TIP retires. **Approved TIP becomes effective.**

Find a champion!

Are there new projects being added into the TIP at the time of a major update, or is it best to seek funding from a competitive program?

Criteria Summary



Competitive Funding Programs - PA

- ▶ CMAQ – Congestion Mitigation and Air Quality
- ▶ Rail Freight Assistance Program
- ▶ PA Multi-Modal Transportation Fund (PennDOT)
- ▶ PA Multi-Modal Transportation Fund (PA Dept. of Economic Development/Commonwealth Financing Authority)
- ▶ Green Light Go
- ▶ ARLE (Automatic Red Light Enforcement)
- ▶ TCDI (Planning Work)







- Impacts of improved transit services along Columbus Blvd and/or Navy Yard

-Land use changes along Delaware waterfront

-Impacts to local street network

-Additional "capping" around Penn's Landing area

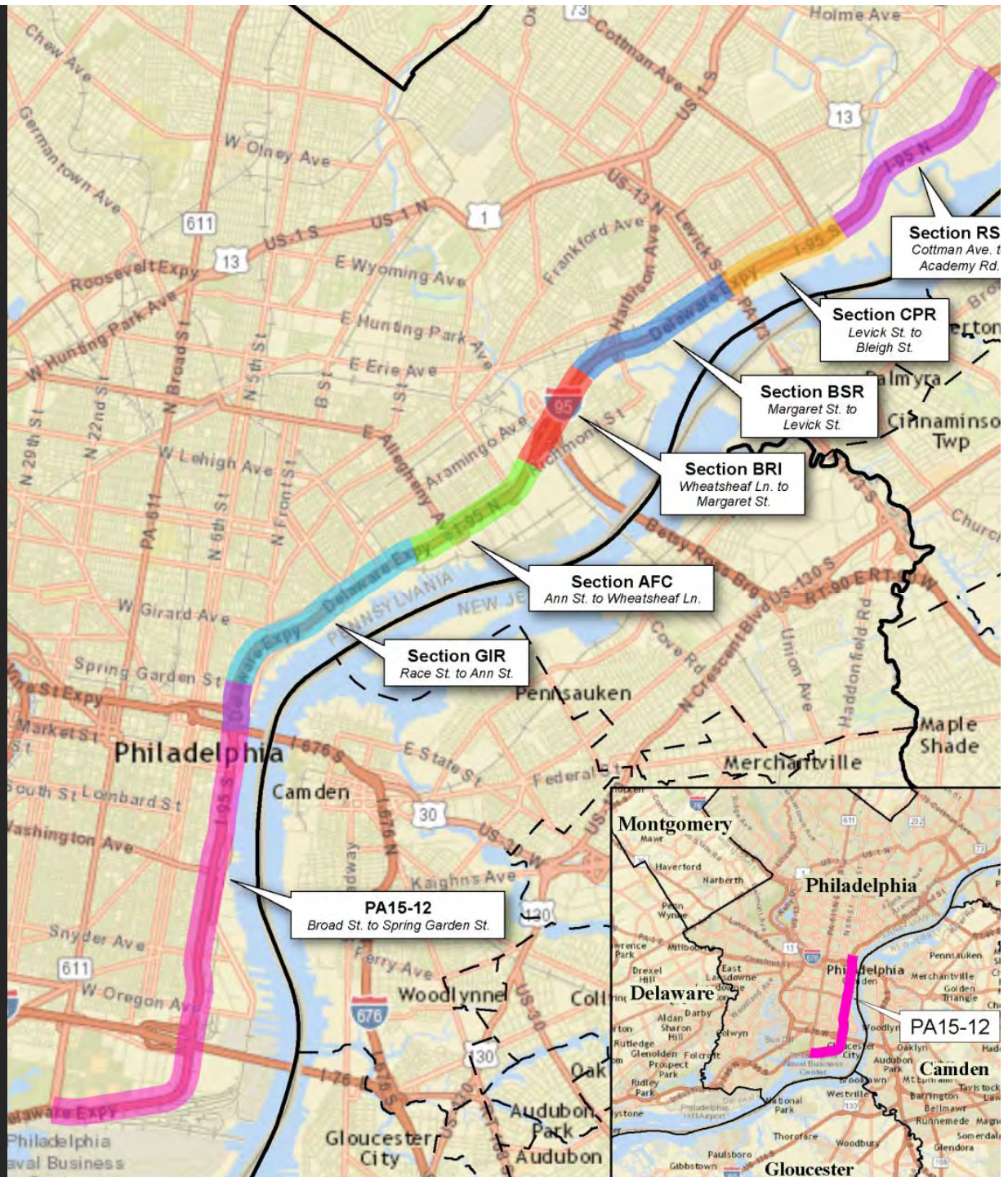




PHOTO CREDIT:
JIM BERGMAIER, PENNDOT

TIP

Competitive Funding Programs - NJ

- ▶ CMAQ (new NJ Round opening circa January 1, 2018)
- ▶ Rail Freight Assistance Program
- ▶ Local Freight Impact Fund (new \$30 million TTF program, open now until mid-December)
- ▶ TCDI (Planning Work)





Route 295, Paulsboro Brownfields Access

- 2002 DVRPC TCDI Study
- 2009 Ground –Breaking
- 2017 first delivery of steel



Transportation Funding Programs - National

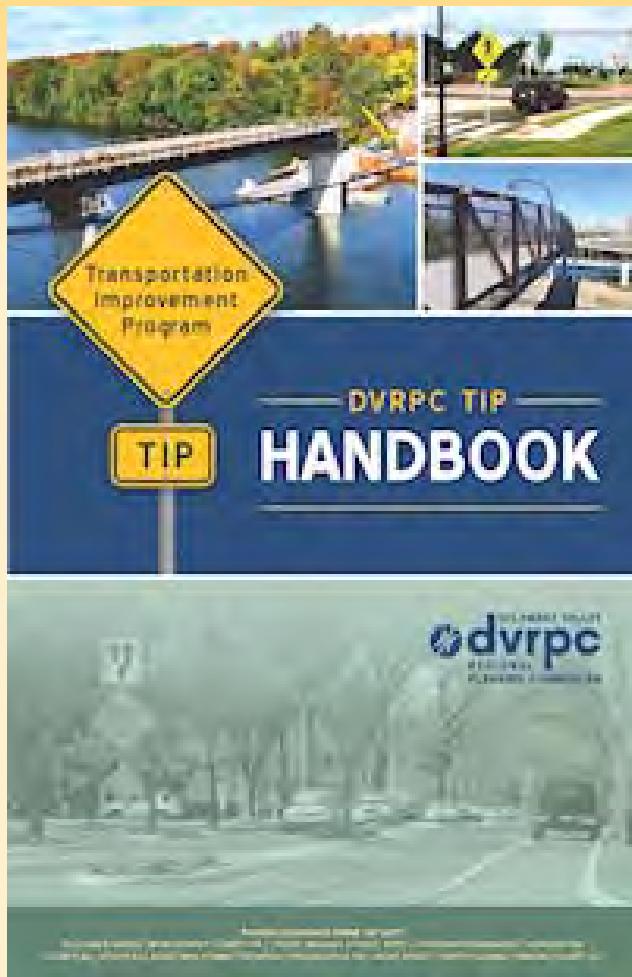
- ▶ TIGER – Just closed
- ▶ INFRA (Previously FASTLANE) – Applicants may re-submit previous FASTLANE applications and explain how it will meet new criteria by November 2, 2017



Delair Bridge



Handy Resource



- Online PDF and hardcopy
- “Sparks Notes” of what the TIP is



Other methods for ongoing public participation in DVRPC's planning and programming activities include the Public Participation Task Force (PPTF) and the Delaware Valley Goods Movement Task Force (DVGMTF). Both committees review and comment on DVRPC policies and plans. To become a member of the PPTF, please contact DVRPC's Public Participation Planner at 215-238-2817. To become a member of the DVGMTF, please contact DVRPC's Office of Freight and Aviation Planning at 215-238-2844. A complete listing of DVRPC committees is available on the DVRPC website (www.dvrpc.org).

FOR MORE INFORMATION

on transportation planning issues in your city or county, or on specific projects

County or City Planning Agencies—Pennsylvania

Bucks County Planning Commission

215-345-3400

bcpc@buckscounty.org

www.buckscounty.org/government/CommunityServices/PlanningCommission

Chester County Planning Commission

610-344-6285

ccplanning@chesco.org

www.chescoplanning.org

Delaware County Planning Department

610-891-5200

www.co.delaware.pa.us/planning

Montgomery County Planning Commission

610-278-3722

www.montcopa.org/planning

Chester City Planning Department

610-447-7707

www.chestercity.com/departments/department-of-public-affairs/planning-department

Philadelphia City Planning Commission

215-683-4615

planning@phila.gov

www.phila.gov/cityplanning

Philadelphia Managing Director's Office of Transportation & Infrastructure Systems

215-686-9003

OTIS@phila.gov

www.phillyotls.com

Philadelphia City Streets Department

215-686-5560

www.philadelphiastreet.com

County or City Planning Agencies—New Jersey

Burlington County Engineers Office

856-642-3700

Engineering@co.burlington.nj.us

www.co.burlington.nj.us/281/Engineering

Camden County Division of Planning

856-566-3120

www.camdencounty.com/service/public-works/planning

Gloucester County Planning Division

856-307-6650

www.gloucestercountynj.gov/depts/p/pw/planning

Mercer County Planning Department

609-989-6545

www.mercercounty.org/departments/planning

Camden City Department of Planning and Development

856-757-7214

development@ci.camden.nj.us

www.ci.camden.nj.us/planning-and-development

Trenton City Division of Planning

609-989-3502

www.trentonnj.org/Cit-e-Access/webpage.cfm?TID=55&TPID=10409



Transportation
Improvement
Program

TIP

Thank You!

View TIP documents at www.dvrpc.org/TIP



Elizabeth Schoonmaker, Associate Director for Transportation
DVRPC - 190 N. Independence Mall West
Philadelphia, PA 19106

(215) 592-1800 (215) 238-2938