



Appendix E

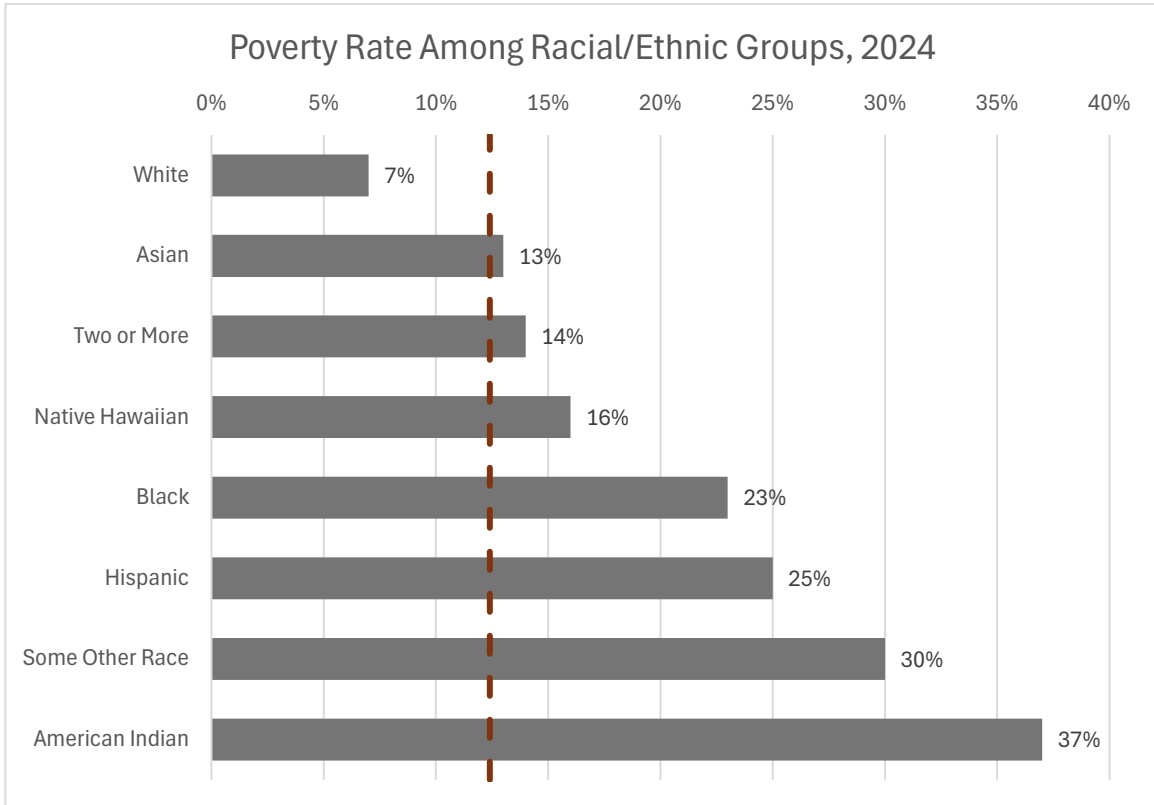
Title VI and Community Impact Analysis

This Page Intentionally Left Blank

Appendix E: Title VI and Community Impact Analysis

This appendix includes detailed tables and maps to complement the information provided in Chapter 3. All tables include data for the DVRPC-PA region of Bucks, Chester, Delaware, Montgomery, and Philadelphia Counties.

Table E-1: Cross-tabulations of Low-Income Populations



Source: American Community Survey, U.S. Census Bureau, 2020-2024.

* DVRPC's Title VI Compliance Tool for the Greater Philadelphia Region defines Low-Income Populations as 200% of the poverty level or below.

Figure E-1: Concentrations of Low-Income Populations

DRAFT DVRPC FFY2027 TIP for PA (FFY27-30)
**Concentrations of Low-Income Populations
in the DVRPC-PA Region**

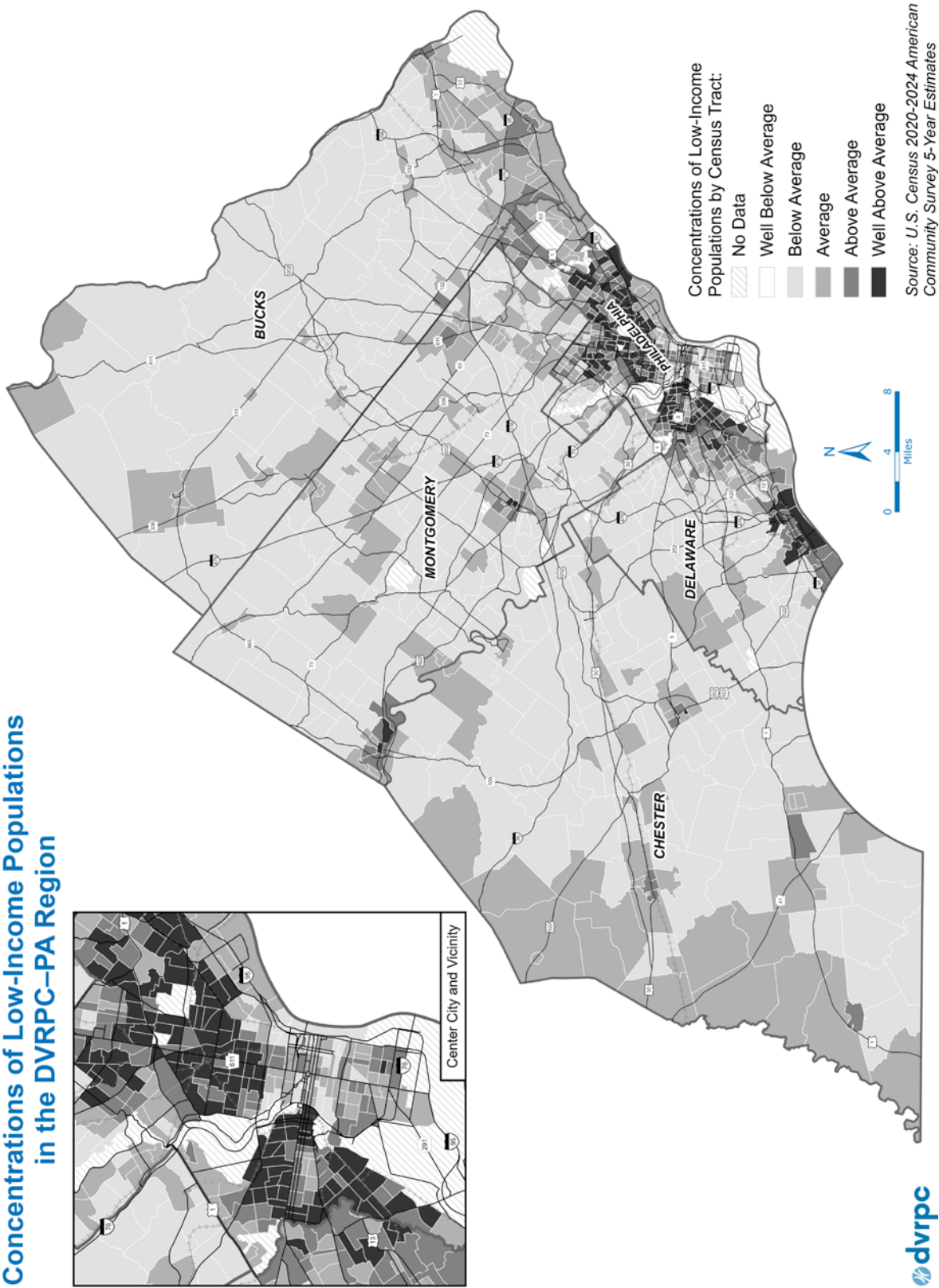


Figure E-2: Concentrations of Title VI Protected Classes

DRAFT DVRPC FFY2027 TIP for PA (FFY27-30)
Concentrations of Title VI Populations
in the DVRPC-PA Region

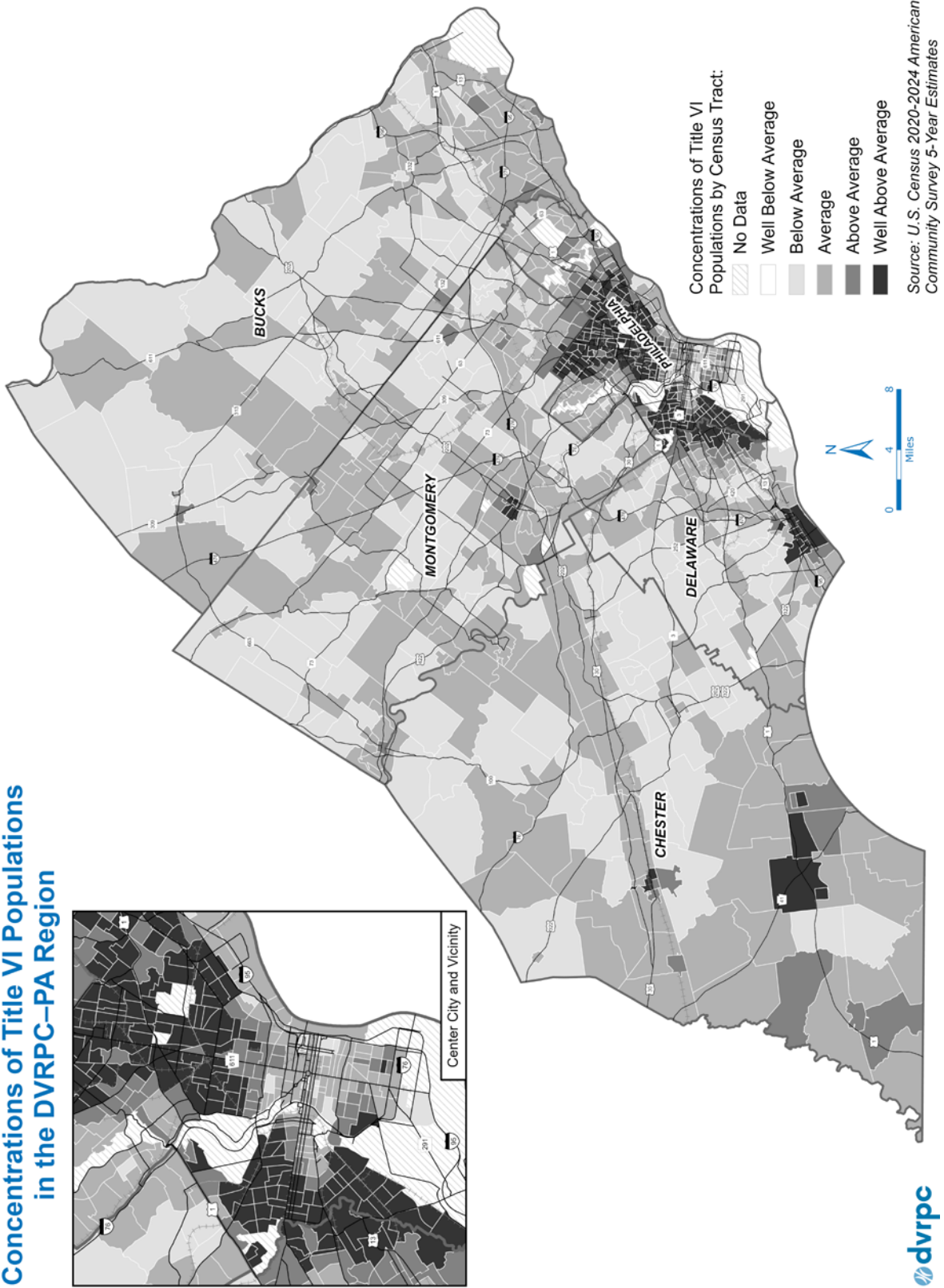


Figure E-3: Bridge Condition and Concentrations of Low-Income Populations

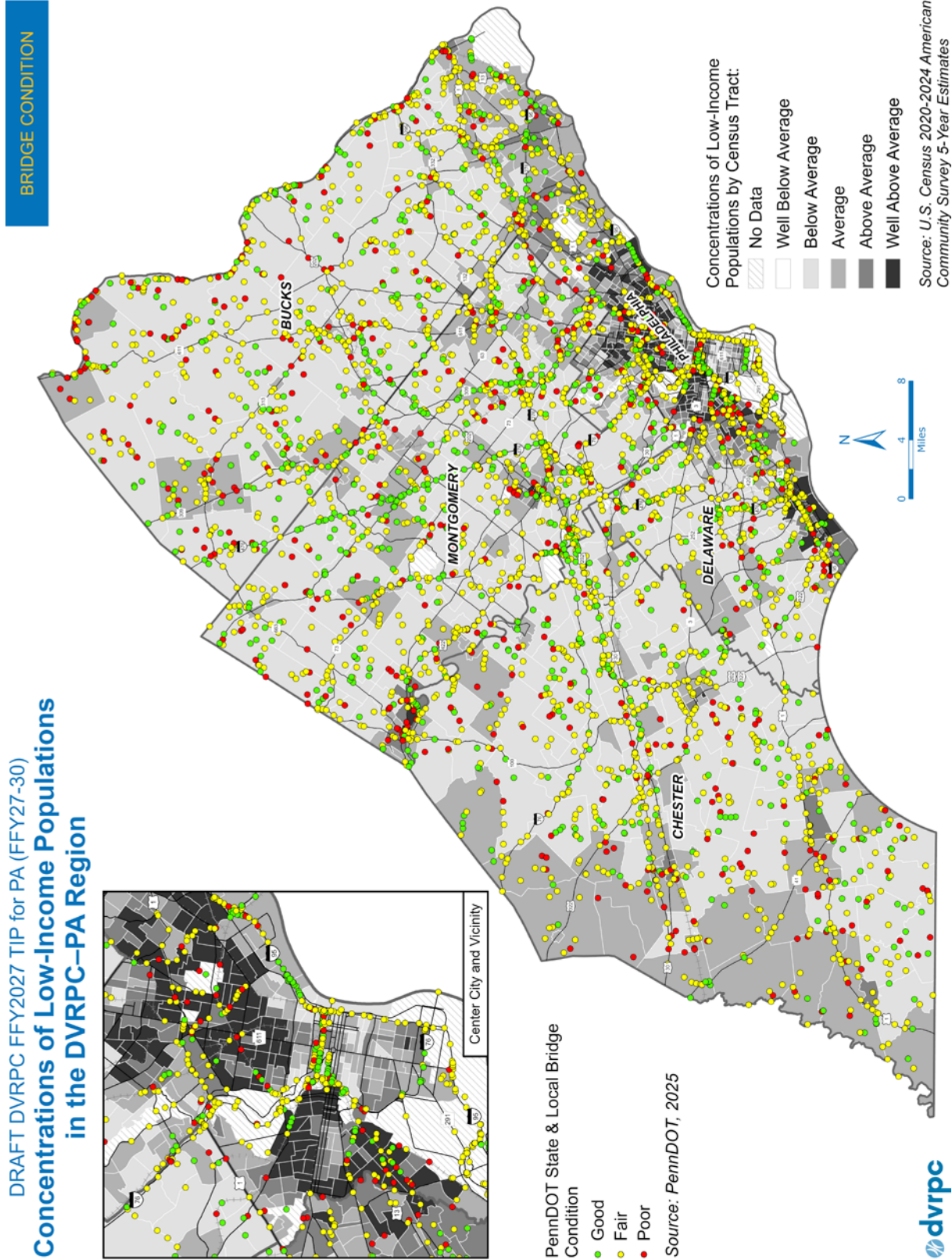
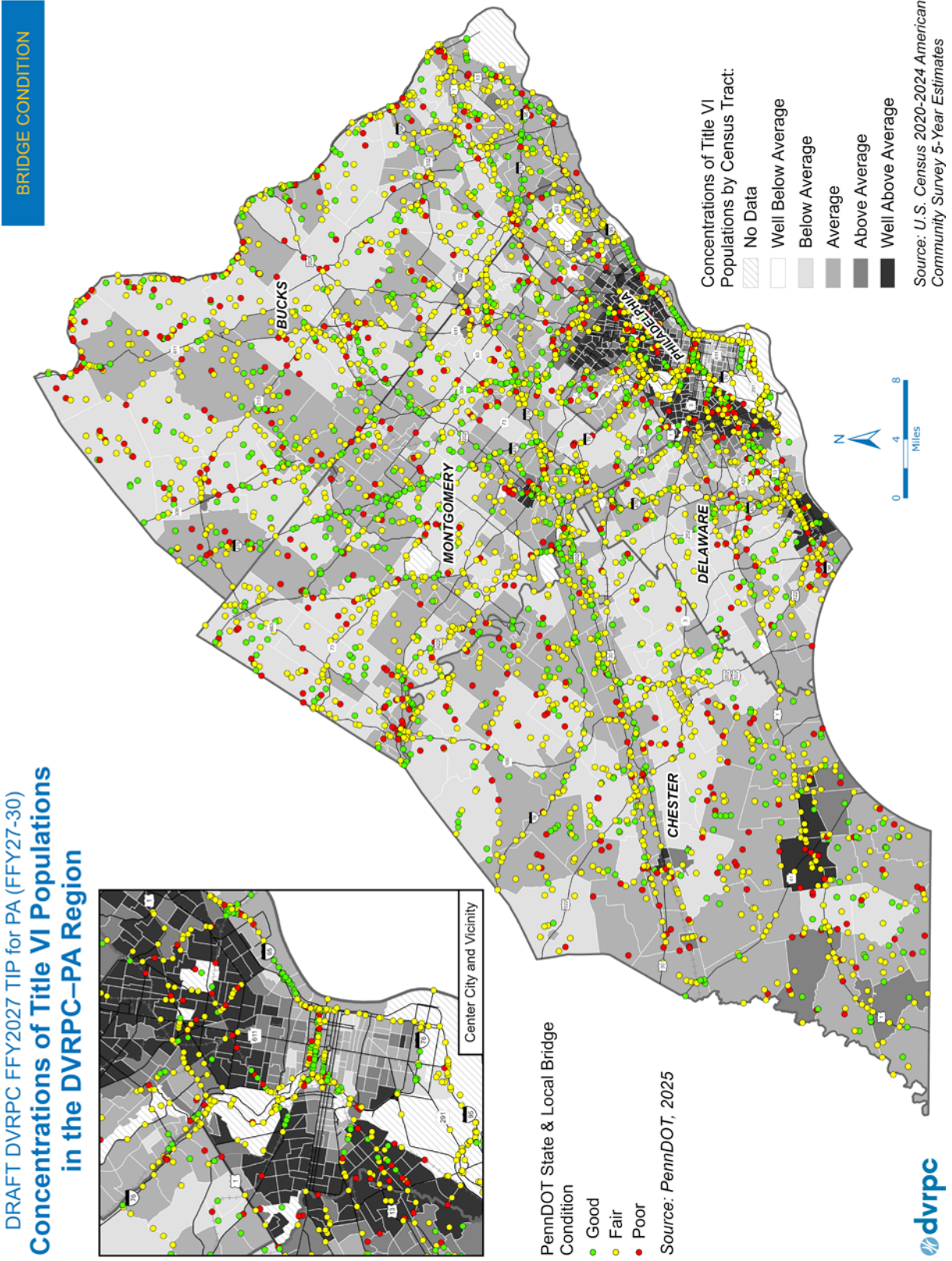
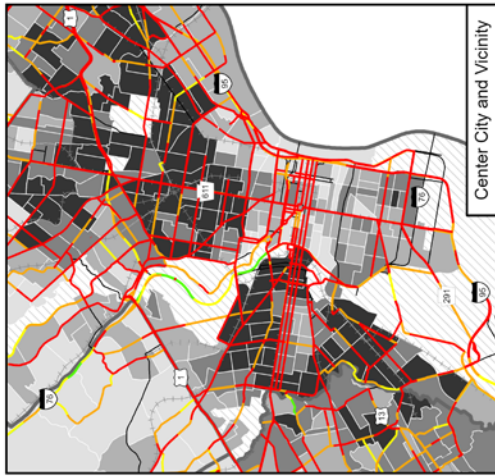


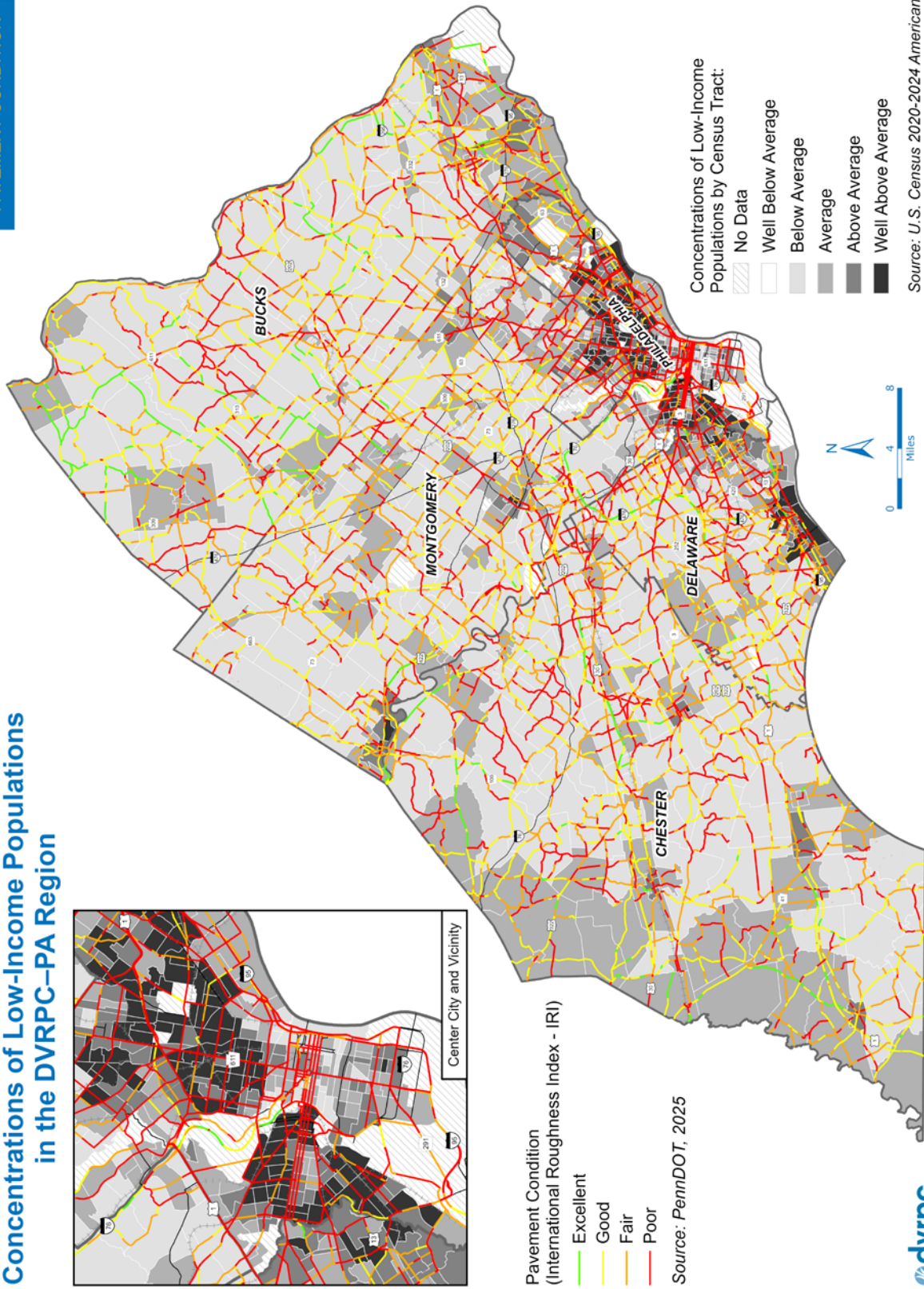
Figure E-4: Bridge Condition and Concentrations of Title VI Protected Classes



DRAFT DVRPC FFY2027 TIP for PA (FFY27-30)
**Concentrations of Low-Income Populations
in the DVRPC-PA Region**



PAVEMENT CONDITION



**Pavement Condition
(International Roughness Index - IRI)**
 Excellent
 Good
 Fair
 Poor
 Source: PennDOT, 2025

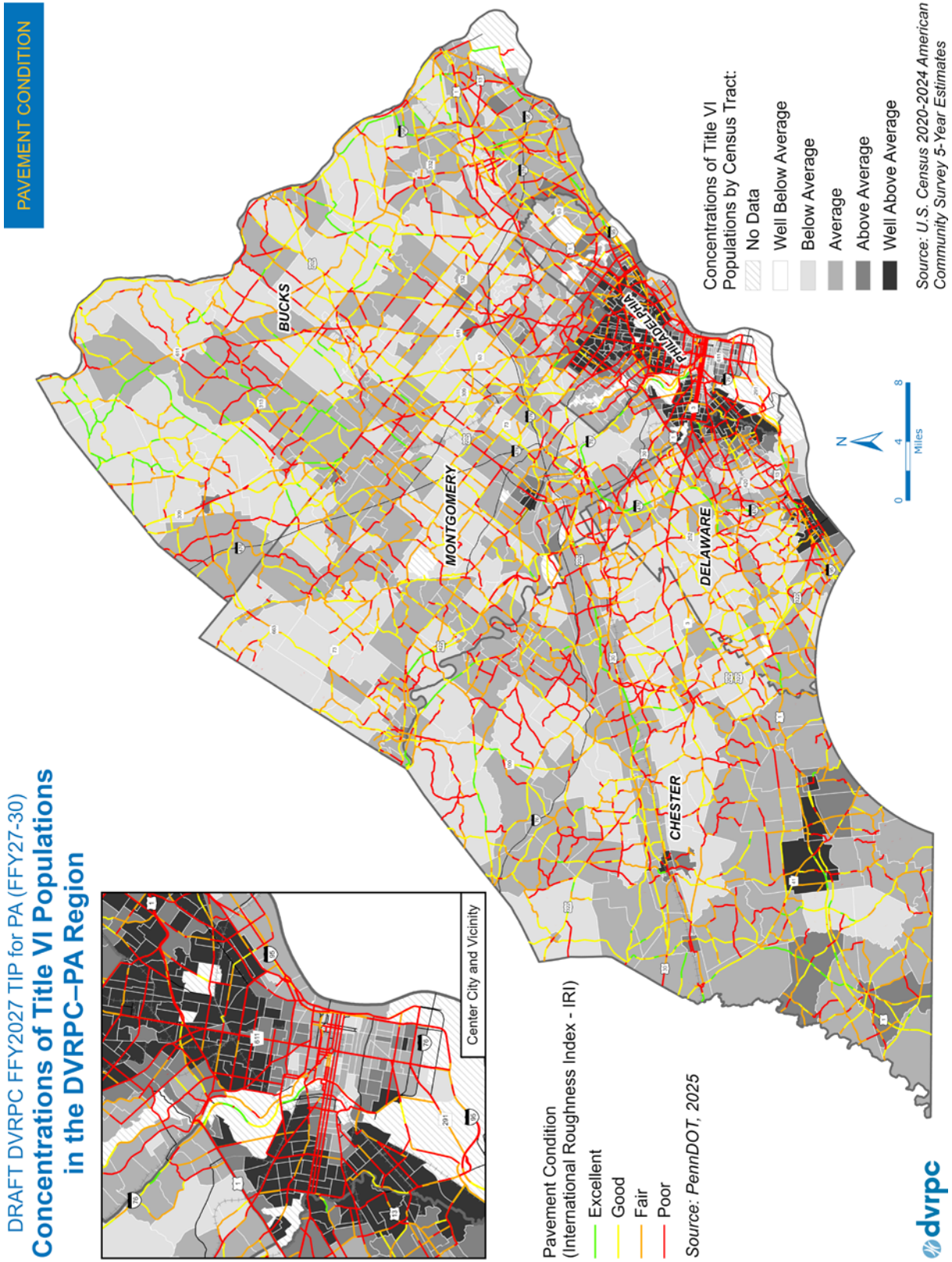
**Concentrations of Low-Income
Populations by Census Tract:**
 No Data
 Well Below Average
 Below Average
 Average
 Above Average
 Well Above Average



Source: U.S. Census 2020-2024 American
Community Survey 5-Year Estimates



Figure E-6: Pavement Condition and Concentrations of Title VI Protected Classes



DRAFT DVRPC FFY2027 TIP for PA (FFY27-30)
**Concentrations of Title VI Populations
 in the DVRPC-PA Region**

Figure E-7: Bicyclist and Pedestrian Related Crashes, Killed and Severely-Injured (KSI) (2020-2024) and Concentrations of Low-Income Populations

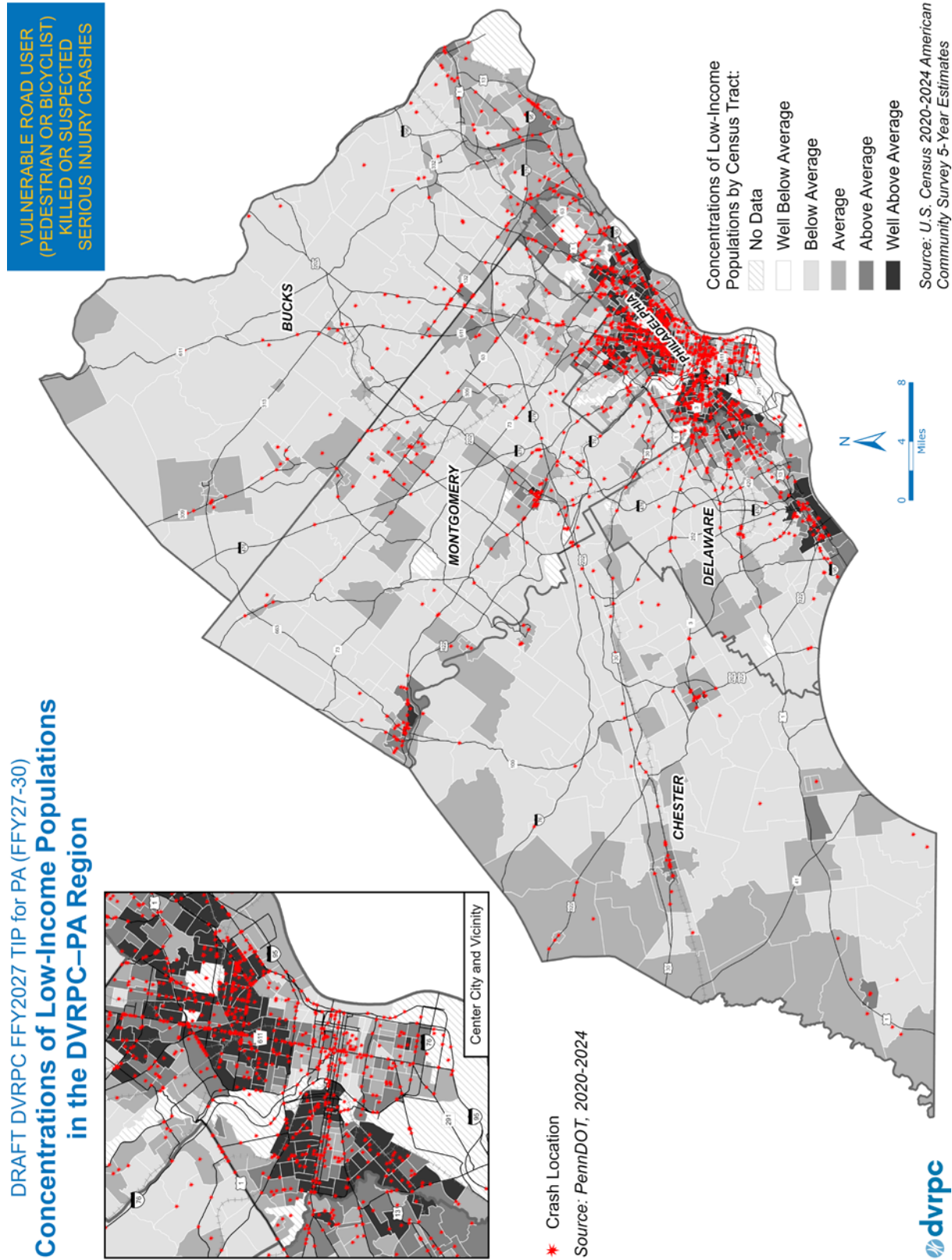


Figure E-8: Bicyclist and Pedestrian Related Crashes, Killed and Severely-Injured (KSI) (2020-2024) and Concentrations of Title VI Protected Classes

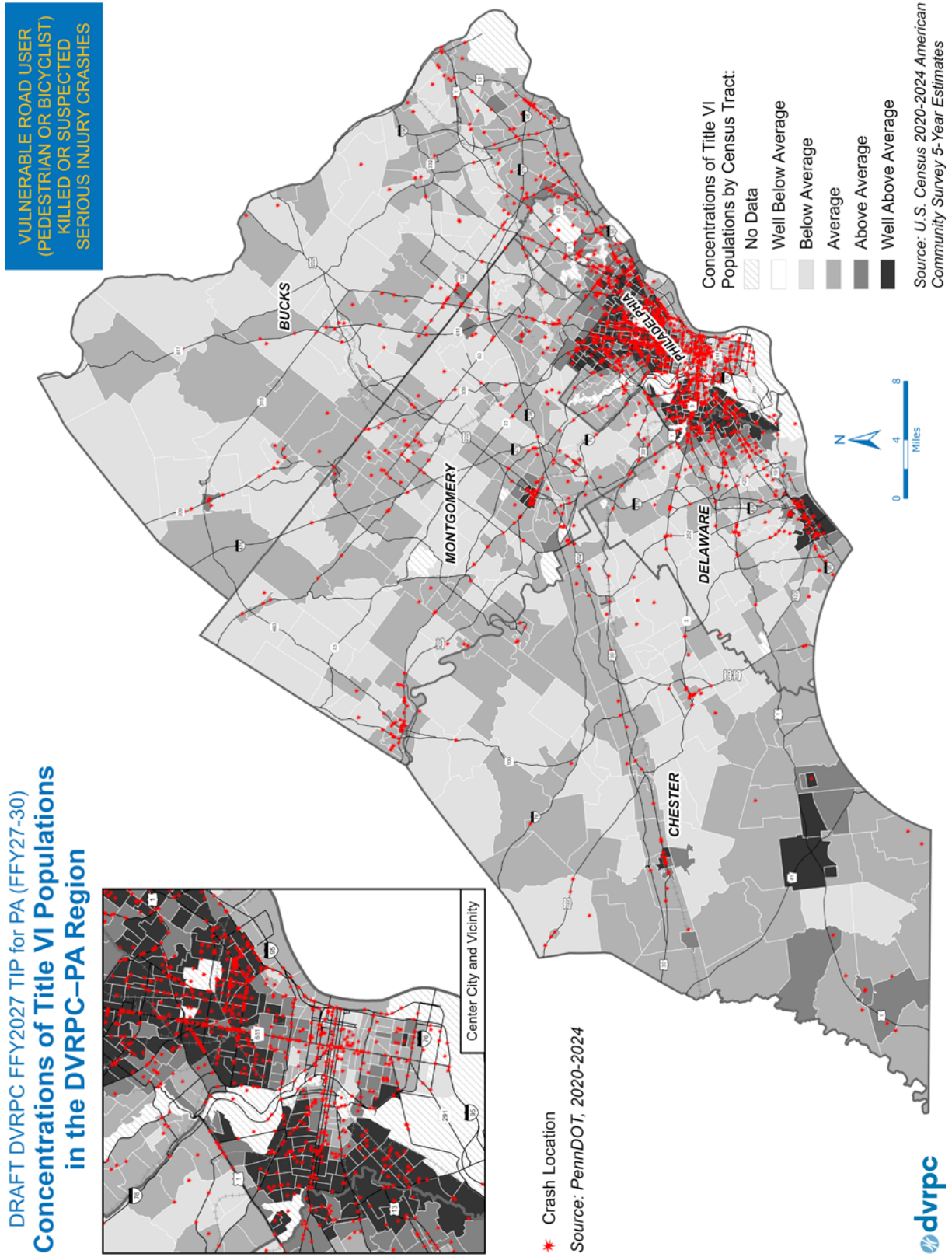


Figure E-9: Regional High Injury Network and PA TIP Roadway Projects

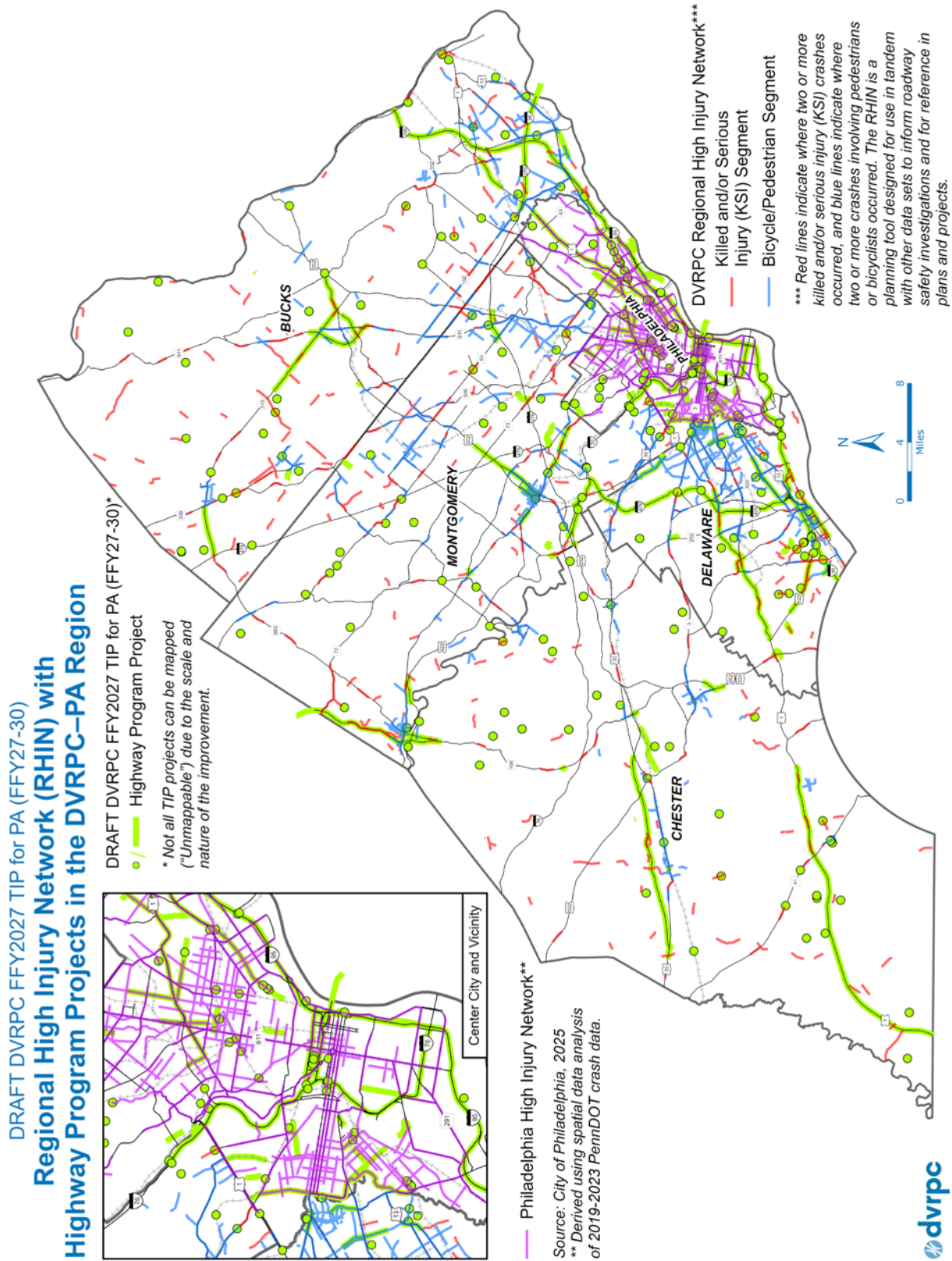


Figure E-10: Highway Projects and Concentrations of Low-Income Populations

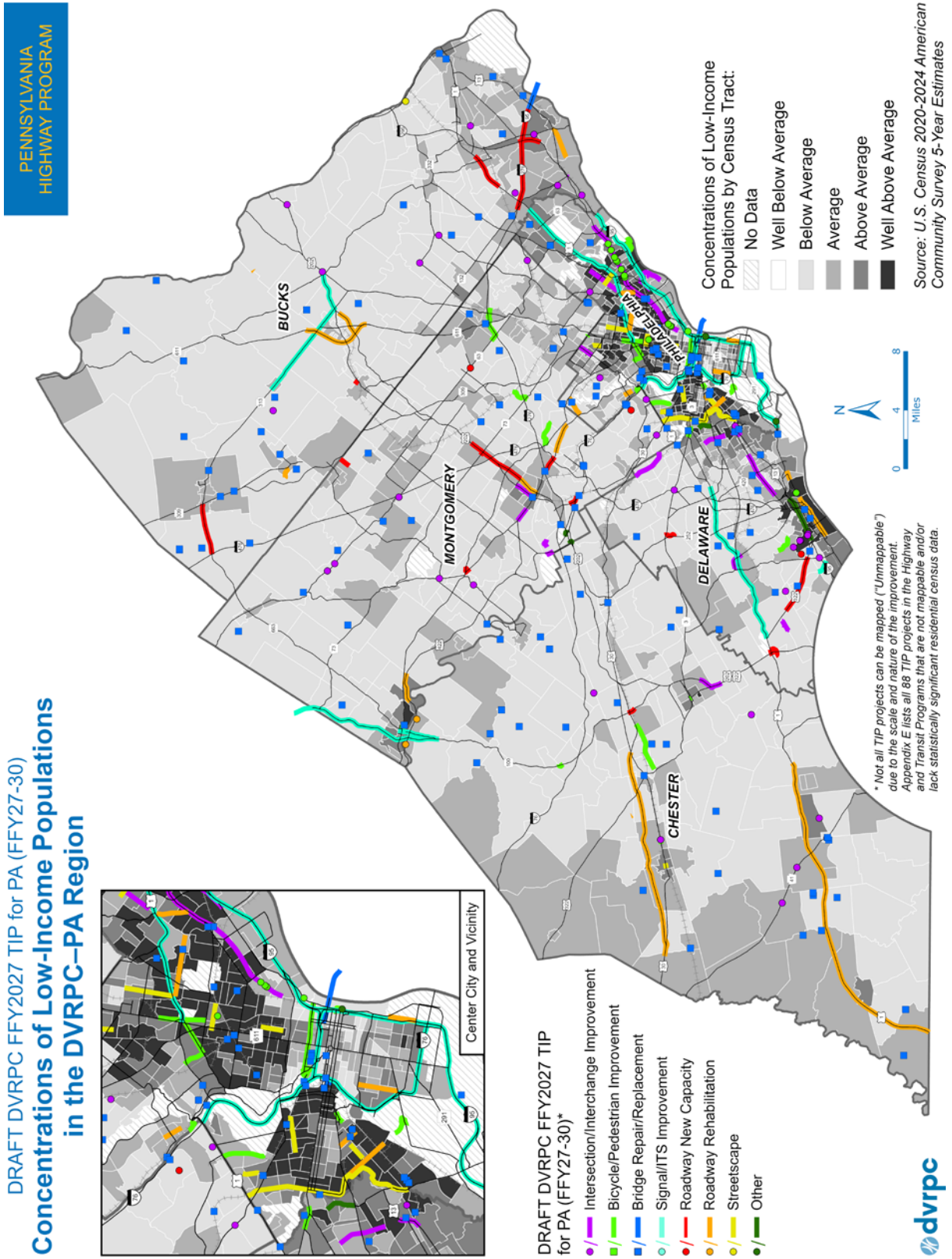


Figure E-11: Highway Projects and Concentrations of Title VI Protected Classes

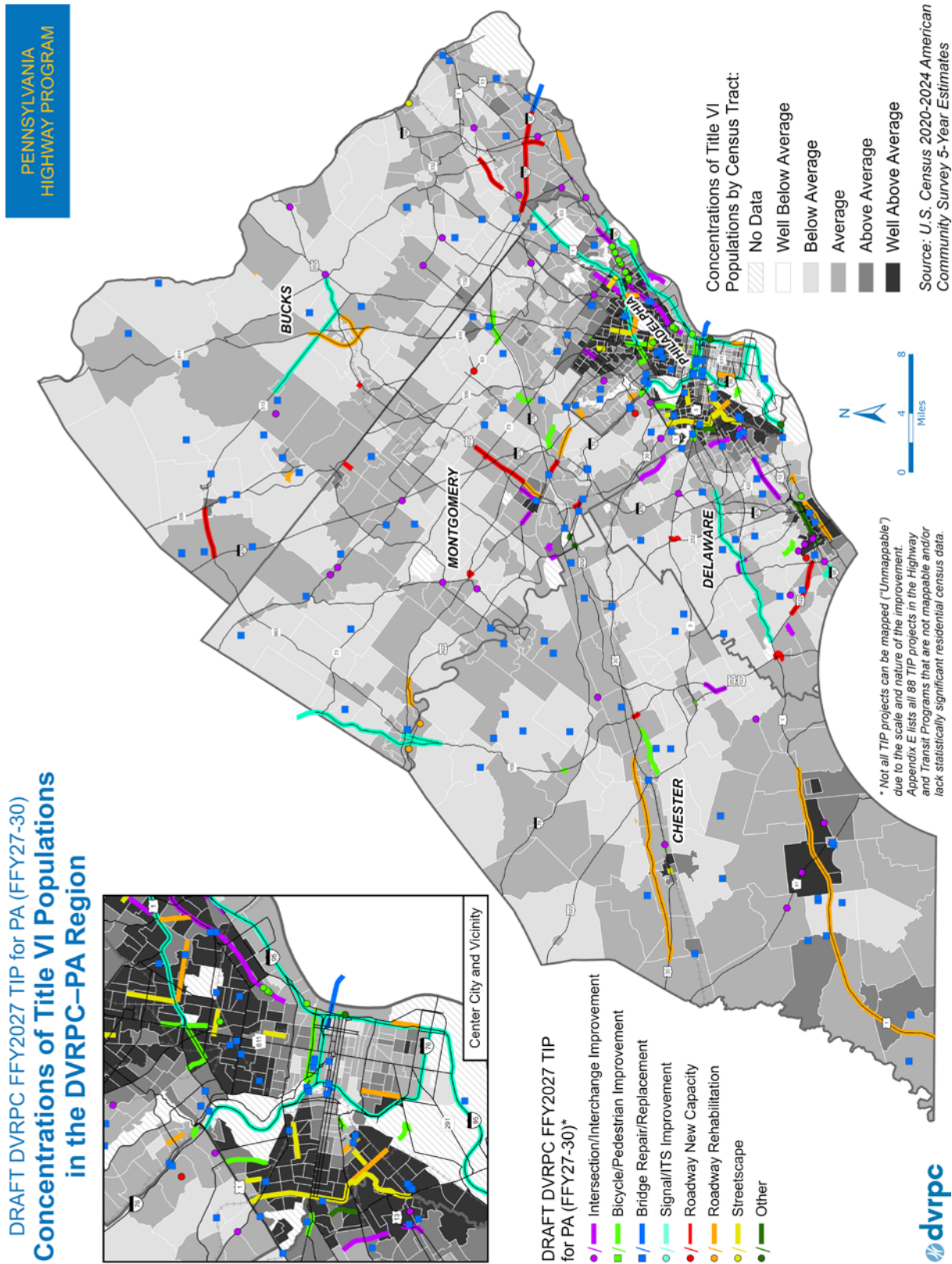


Figure E-12: Transit Projects and Concentrations of Low-Income Populations

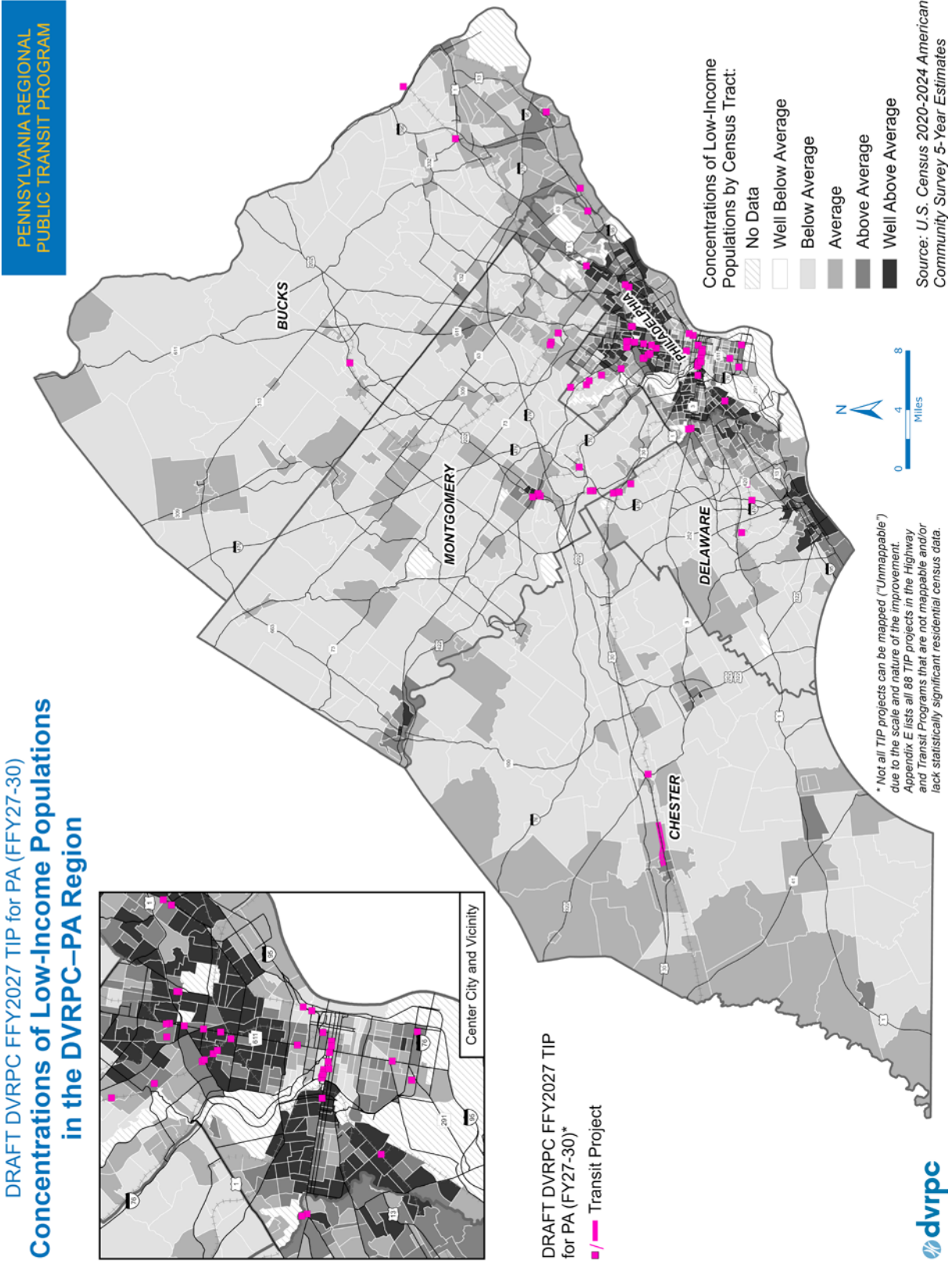


Figure E-13: Transit Projects and Concentrations of Title VI Protected Classes

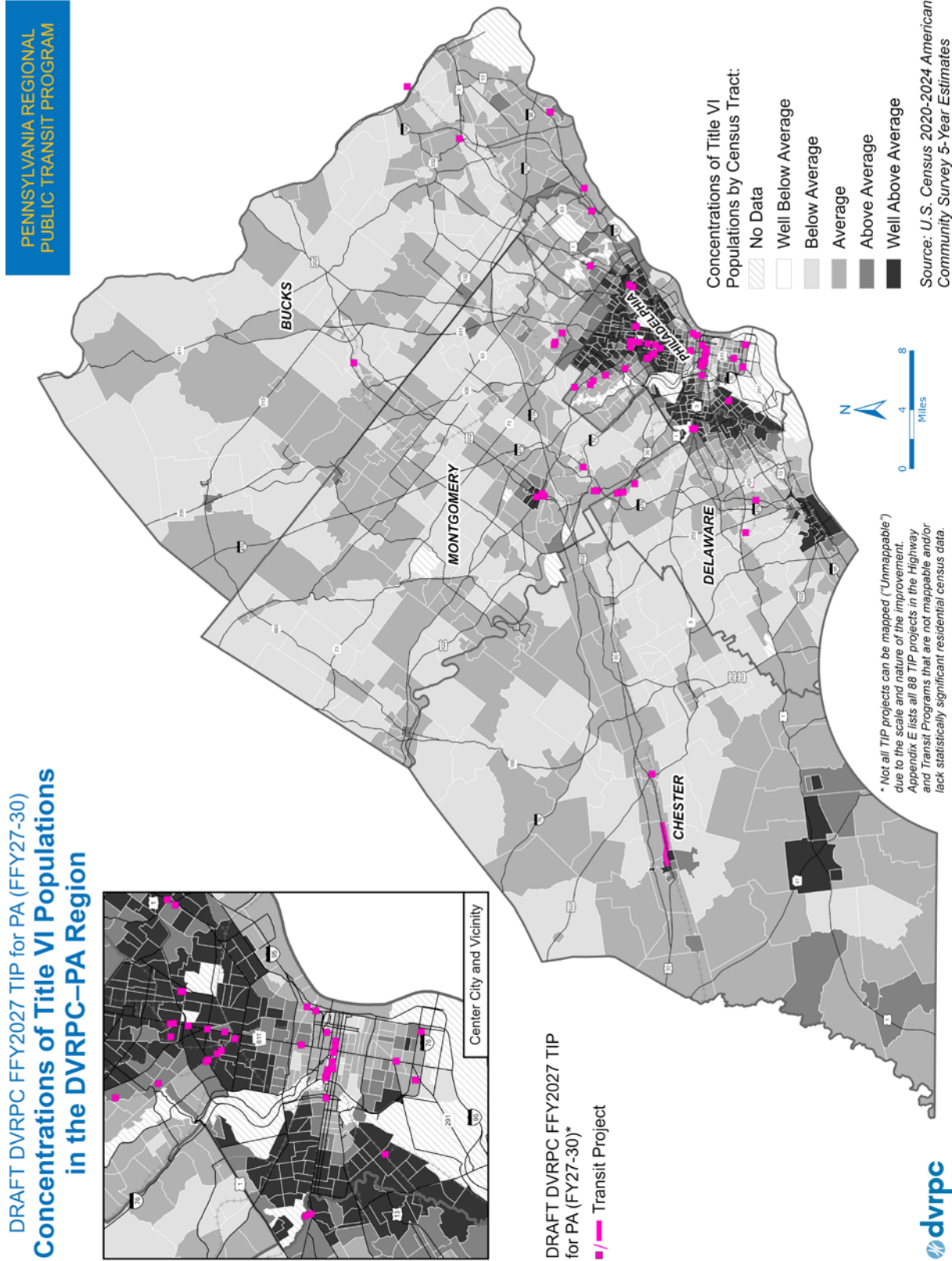


Figure E-14: Pennsylvania Interstate Management Program Projects and Concentrations of Low-Income Populations

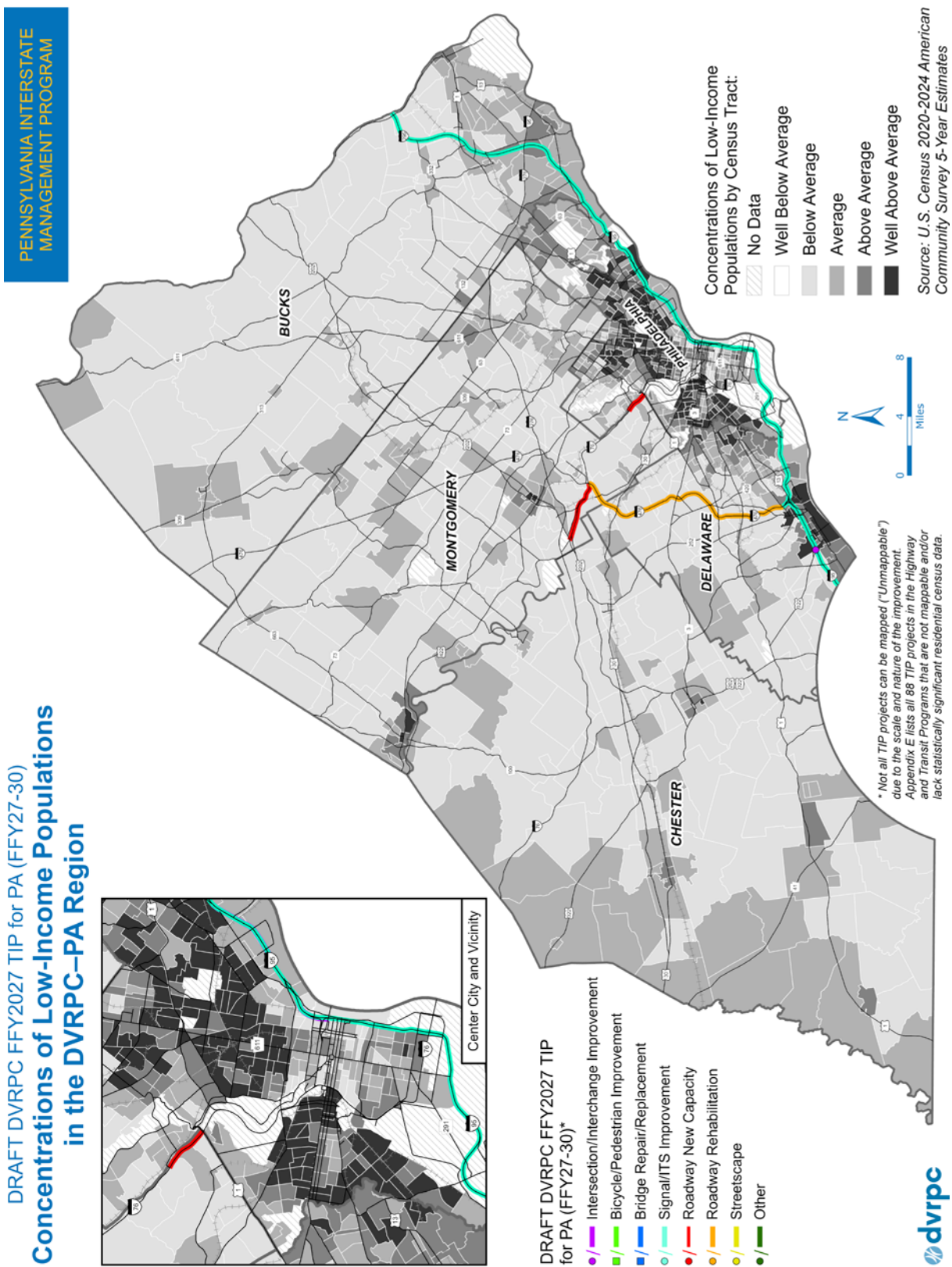


Figure E-15: Pennsylvania Interstate Management Program Projects and Concentrations of Title VI Protected Classes

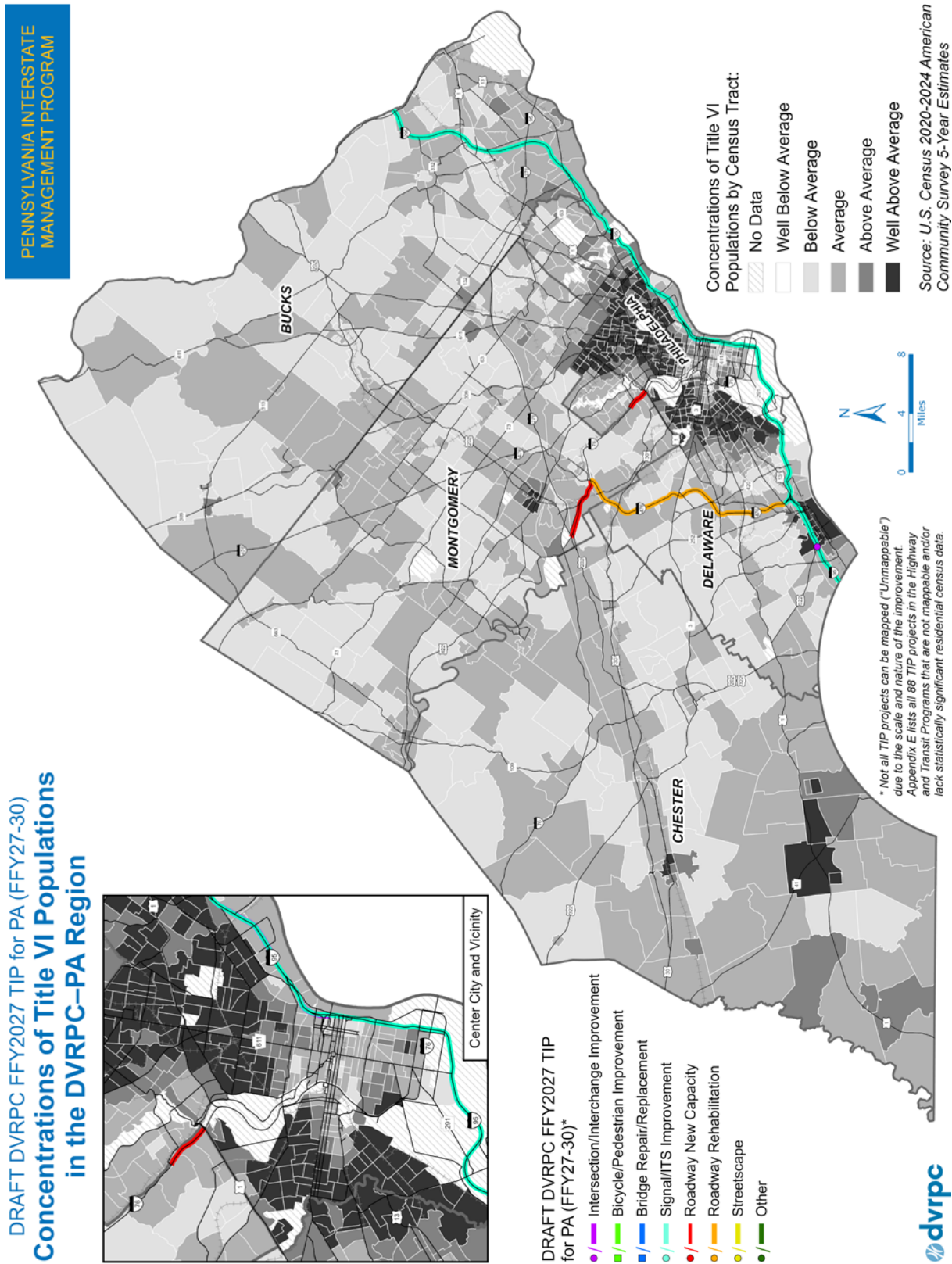


Figure E-16: Transit Accessibility

DRAFT DVRPC FFY2027 TIP for PA (FFY27-30)
Transit Accessibility in the DVRPC-PA Region

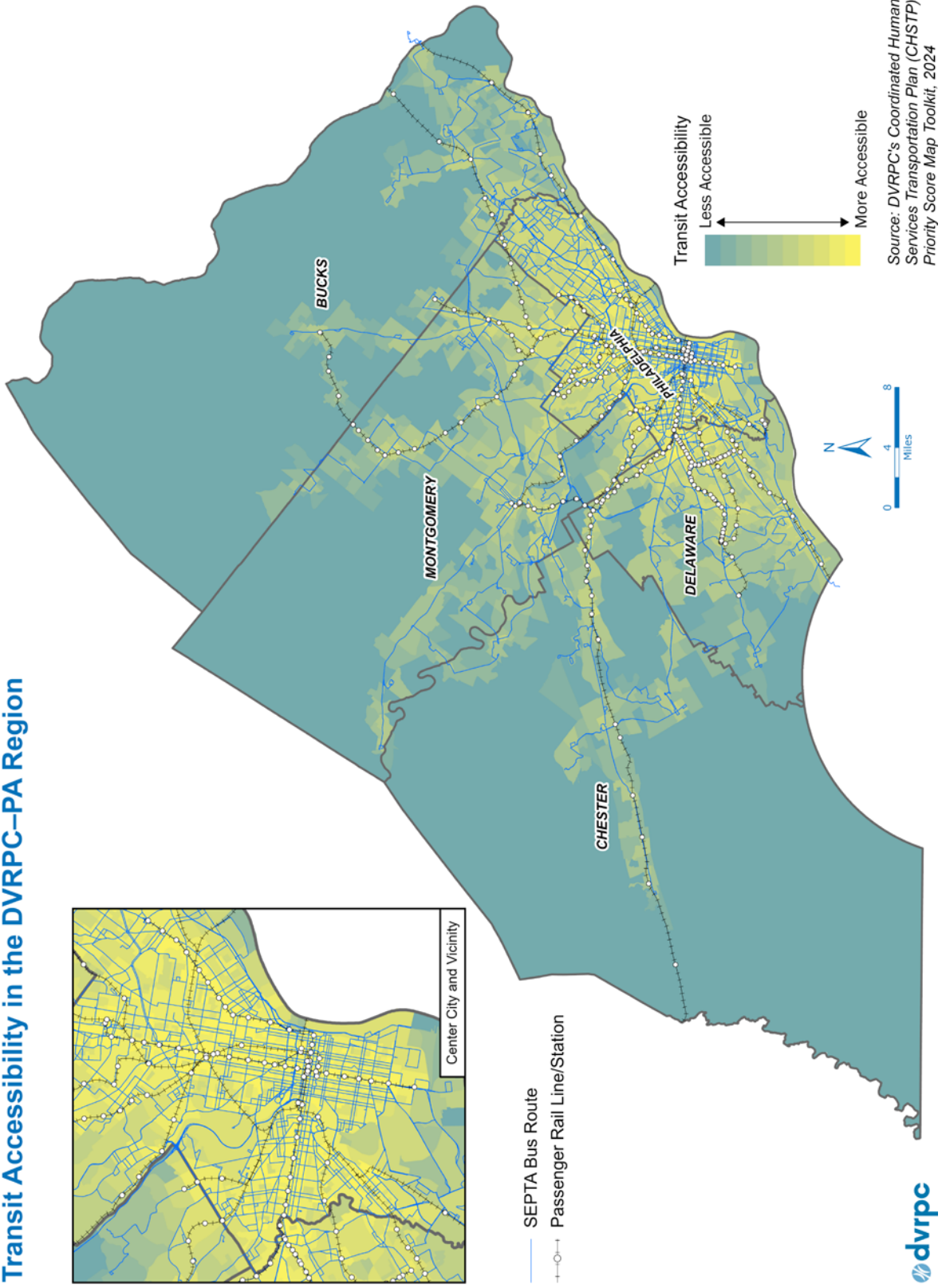


Table E-2: List of Unmappable TIP Projects

MPMS #	Project Title	Project Type
16178	Construction Management Tasks	Other
46959	I-95 Design Review Manager	Other
48201	DVRPC Competitive CMAQ Program	Other
51095	ITS Program Integrator	Signal/ITS Improvements
57902	City Wide 3R Betterments Line Item	Roadway Rehabilitation
57927	Regional Safety Initiatives (HSIP) Line Item	Intersection/Interchange Improvements
59935	Capital Operating Assistance - Pottstown Area Rapid Transit (PART)	Transit Improvements
59966	Capital Asset Lease Program	Transit Improvements
59973	Utility Fleet Renewal Program - Non Revenue Vehicles	Transit Improvements
60275	Debt Service	Transit Improvements
60317	Federal Preventive Maintenance	Transit Improvements
60582	Vehicle Overhaul Program	Transit Improvements
60599	Paratransit & SEPTA GO Vehicle Acquisition	Transit Improvements
60611	SEPTA Key (Fare Collection System/New Payment Technologies)	Transit Improvements
63406	Complete Streets Resurfacing Program	Bicycle/Pedestrian Improvement
64984	Transportation Alternatives - Urban (TAU) Line Item	Bicycle/Pedestrian Improvement
65109	Transit Flex - SEPTA	Transit Improvements
75854	District Program Management Services "A"	Other
75855	District Program Management Services "B"	Other
79927	Highway Reserve Line Item-STP	Other
79929	Bridge Reserve Line Item	Other
79980	STU Reserve Line Item	Other
81226	Montgomery County 3R Betterments Line Item	Other
81230	Better Bus Stops - South 7th and 8th Streets	Bicycle/Pedestrian Improvement
81232	Transportation Operations	Other
81237	2025 On-Board & Household Travel Surveys	Other
81930	Philadelphia Vision Zero Capital Plan Implementation Project	Bicycle/Pedestrian Improvement
81939	Philadelphia Interconnected Solutions to Accelerate Alternative Fuel Transportation	Other
82012	Philadelphia Community Charging Stations	Other
82028	Bucks County Electric Vehicle Charging Program	Other
82062	ITS Maintenance	Signal/ITS Improvements
82077	Philadelphia Bridge Preservation	Bridge Repair/Replacement

82079	Bucks County Bridge Preservation	Bridge Repair/Replacement
82080	Chester County Bridge Preservation	Bridge Repair/Replacement
82081	Delaware County Bridge Preservation	Bridge Repair/Replacement
82082	Montgomery County Bridge Preservation	Bridge Repair/Replacement
82091	ITS Network Arch Tech Refresh Ph1 - PA 309 Hubs	Signal/ITS Improvements
82155	Systemic Vulnerable Road User Safety	Bicycle/Pedestrian Improvement
82158	Systemic Lane Departure Improvements	Other
82159	Systemic Wrong Way Improvements	Intersection/Interchange Improvements
82161	Systemic Intersection Safety Improvements	Intersection/Interchange Improvements
82183	7th Street On-Ramp to I-76W	Intersection/Interchange Improvements
82216	NHPP Reserve Line Item	Other
83743	ADA Ramps Line Item	Bicycle/Pedestrian Improvement
84318	CAQ Reserve Line Item	Other
84457	Signal Retiming Program	Signal/ITS Improvements
90497	Infrastructure Safety and Renewal Program	Transit Improvements
90512	SEPTA Bus Purchase Program	Transit Improvements
92182	Expressway Service Patrol	Signal/ITS Improvements
95739	Transit Capital Improvements	Transit Improvements
96223	Philadelphia Signal Retiming	Signal/ITS Improvements
102275	Study Line Item	Other
102571	Communications, Signals, & Technology Improvements	Transit Improvements
102665	Signal Upgrade Line Item	Signal/ITS Improvements
106648	Sink Holes Line Item	Roadway Rehabilitation
106649	Stormwater Permits/Environmental Mitigation Design	Other
106654	I-95 Transportation Demand Mgt (TMA)	Other
109847	ROW Divestment 6-0	Other
112527	Citywide ADA Ramps 3	Roadway Rehabilitation
113257	Outdoor Advertising Control	Other
115965	TAP Project Engineering/Management	Other
115966	CMAQ Project Engineering/Management	Other
115968	Travel Monitoring	Other
115969	Regional GIS Coordination	Other
115971	Transportation Systems Management and Operations (TSMO)	Other
115972	I-95 Planning Assistance	Other
115973	Enhance and Maintain Travel Forecasting Tools	Other
115974	District 6 Modeling Assistance	Other
116807	Citywide ADA Ramps 4	Roadway Rehabilitation

117904	PA Transportation and Community Development Initiative (TCDI)	Other
117912	PA SHRPP	Other
117928	Travel Options Program (TOP)	Other
117929	TripSmart PA Program	Other
117930	PA Transportation Demand Management (TDM) Base Program Administration and Commuter Services	Other
117931	Regional TOP Competitive Administration	Other
117934	I-95 Traffic Forecasts	Other
117997	Bridge Investment Program Line Item	Other
118015	CMAQ Flex for SEPTA Projects of Significance Line Item	Transit Improvements
118036	HSIP Supportive Line Item	Other
118494	Eastern Delaware County Bikeway Implementation Plan (TOP)	Bicycle/Pedestrian Improvement
119299	Carbon Reduction Program Line Item	Other
120942	MS4 and 105 Remediation	Streetscape
121096	City Wide 112	Roadway Rehabilitation
121366	Resiliency and Sustainability Program	Transit Improvements
121367	Safe, Clean, and Secure Program	Transit Improvements
123961	Trolley Modernization Program	Transit Improvements
123964	Market Frankford Line [L] Vehicle & Infrastructure	Transit Improvements
123965	Broad Street Line [B] Vehicle & Infrastructure	Transit Improvements
123966	Regional Rail Silverliner IV Vehicle Replacement & Infrastructure	Transit Improvements

Source: DVRPC, 2026