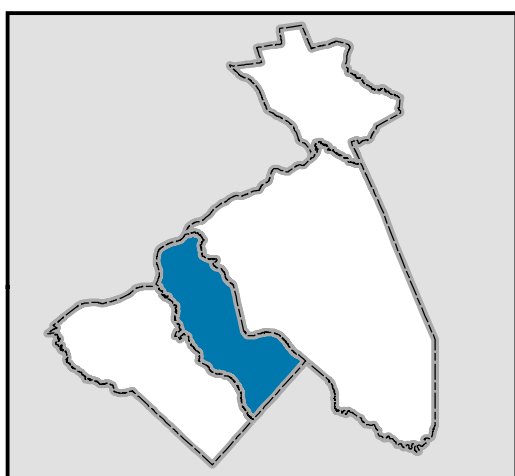
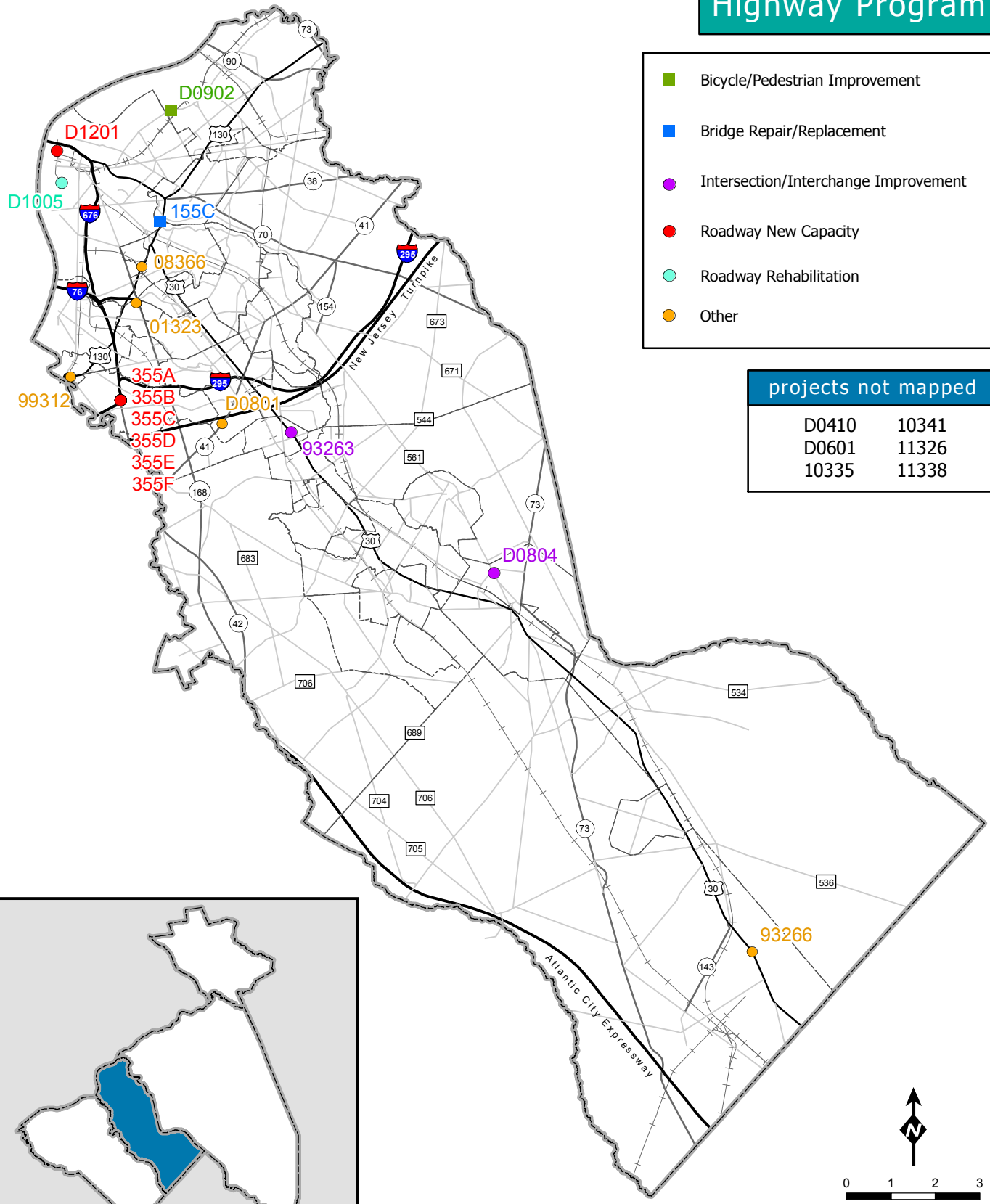


# FY 2012 - 2015 Transportation Improvement Program

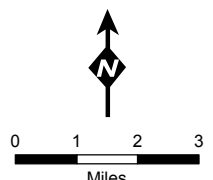
## Highway Program

- Bicycle/Pedestrian Improvement
- Bridge Repair/Replacement
- Intersection/Interchange Improvement
- Roadway New Capacity
- Roadway Rehabilitation
- Other

projects not mapped	
D0410	10341
D0601	11326
10335	11338



**Camden County**



## FY 2012-2015 TIP Correspondence Index

Projects below are in order by DB#. Projects in the TIP listings are in Project Title order.

<b>DB#</b>	<b>Project Title</b>	<b>DB#</b>	<b>Project Title</b>
<b><u>Camden</u></b>			
01323	Route 168, Newton Lake Dam		
08366	Route 130, Camden County, Drainage		
10335	Route 30, Various locations from E. of Broadway Ave. to L		
10341	Route 168, Merchant Street to Ferry Avenue, Pavement		
11326	Route 76/676, Bridge Deck Replacements		
11338	Route 70, Route 38 to Cropwell Road, Pavement		
155C	Route 30/130, Collingswood/Pennsauken (Phase B), PATC		
355A	Route 295/42, Missing Moves, Bellmawr		
355B	Route 295/42/I-76, Direct Connection, Contract 1		
355C	Route 295/42/I-76, Direct Connection, Contract 2		
355D	Route 295/42/I-76, Direct Connection, Contract 3		
355E	Route 295/42/I-76, Direct Connection, Contract 4		
355F	Route 295/42/I-76, Direct Connection, Camden County, Ad		
93263	Route 30, Evesham Road Intersection Improvements		
93266	Route 30, Blue Anchor Dam		
99312	Route 130, Brooklawn Circles		
D0410	Camden County Roadway Safety Improvements		
D0601	Camden County Bus Purchase		
D0801	Clements Bridge Road Streetscape (CR 573), Phases 1-3		
D0804	Haddon Avenue/Franklin Avenue, Intersection Improvemen		
D0901	Laurel Springs Streetscape Improvement Project		
D0902	River Road Improvements, Cramer Hill		
D0905	Bicycle Facilities and Street Lighting, Haddon Heights		
D1005	Battleship New Jersey Access Road (Clinton Ave) Repavin		
D1009	Berlin Road Streetscape Improvements, Camden County		
D1201	Camden Waterfront Roads, Phase Two		
X227A2	Route 168, I-295 Interchange Improvements		

For an updated list of projects, please [click here](#).