



CONNECTIONS

THE REGIONAL PLAN FOR
A SUSTAINABLE FUTURE



SUSTAINABLE SKYLINES ROUNDTABLE

October 28, 2009



Sustainability



CONNECTIONS

THE REGIONAL PLAN FOR
A SUSTAINABLE FUTURE

“The ability of a region to meet the needs of the present without compromising the ability of future generations to meet their own needs.”

World Commission on Environment & Development,
Brundtland Commission, 1989.

PLAN FRAMEWORK: Core Plan Principles



CONNECTIONS

THE REGIONAL PLAN FOR
A SUSTAINABLE FUTURE

**Modernize
the
Transportation
System**

**Build an Energy-
Efficient
Economy**

Sustainability

**Create Livable
Communities**

**Manage
Growth &
Protect
Resources**

DEVELOPING A **COLLECTIVE VISION** OF THE FUTURE



CONNECTIONS

THE REGIONAL PLAN FOR
A SUSTAINABLE FUTURE

- **On-Line Survey** Identified Priority Issues
- Utilized **Focus Groups** to Identify Barriers
- **County Workshops** Broadened the Dialogue
- Developed with **Key Stakeholders**

Regional What-If Scenario Analysis: Benefits & Costs



CONNECTIONS

THE REGIONAL PLAN FOR
A SUSTAINABLE FUTURE

- Two Extreme Settlement Patterns
 - **Sprawl**
 - **Recentralization**

Compared to Board Adopted Forecasts

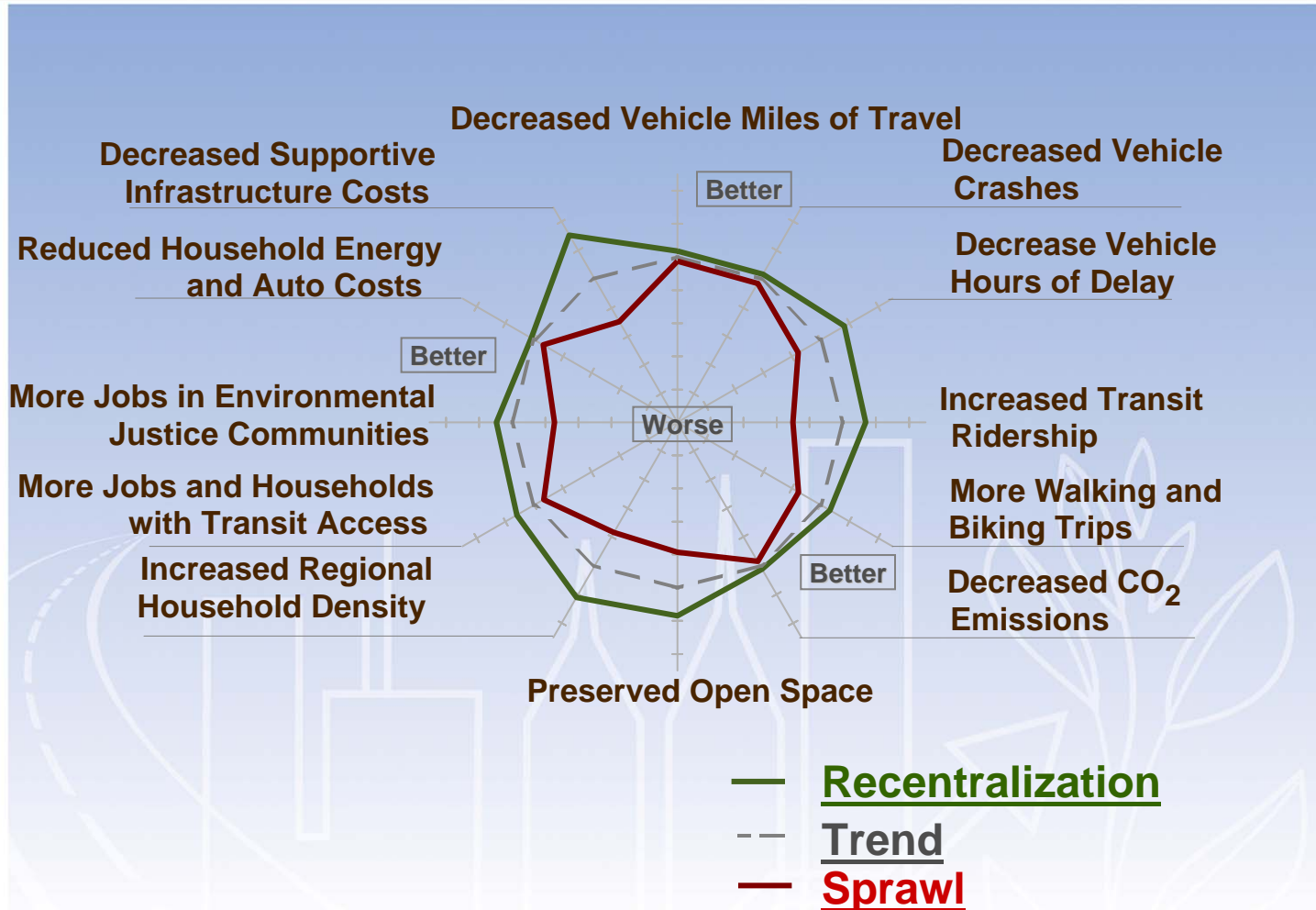
- **Trend**
- Identical Total Population and Employment Levels
- Analyzed Land Use, Transportation, Environmental and Economic Impacts

SCENARIO COMPARISON: Best Way to Meet Long-Range Plan Goals



CONNECTIONS

THE REGIONAL PLAN FOR
A SUSTAINABLE FUTURE



LAND USE PLAN

2035 Land Use Plan



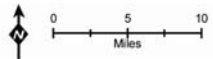
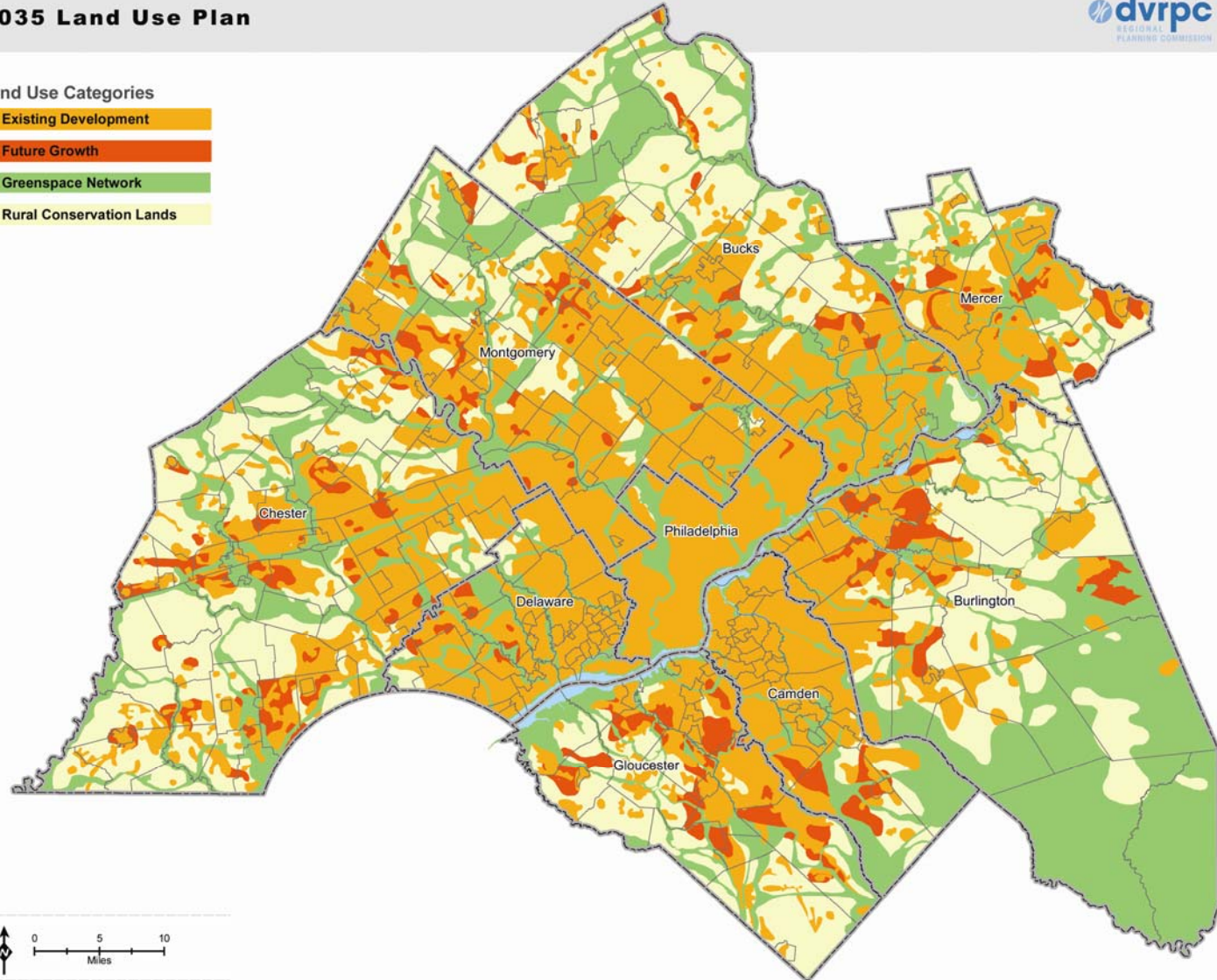
Land Use Categories

- Existing Development
- Future Growth
- Greenspace Network
- Rural Conservation Lands



CONNECTIONS

THE REGIONAL PLAN FOR
A SUSTAINABLE FUTURE



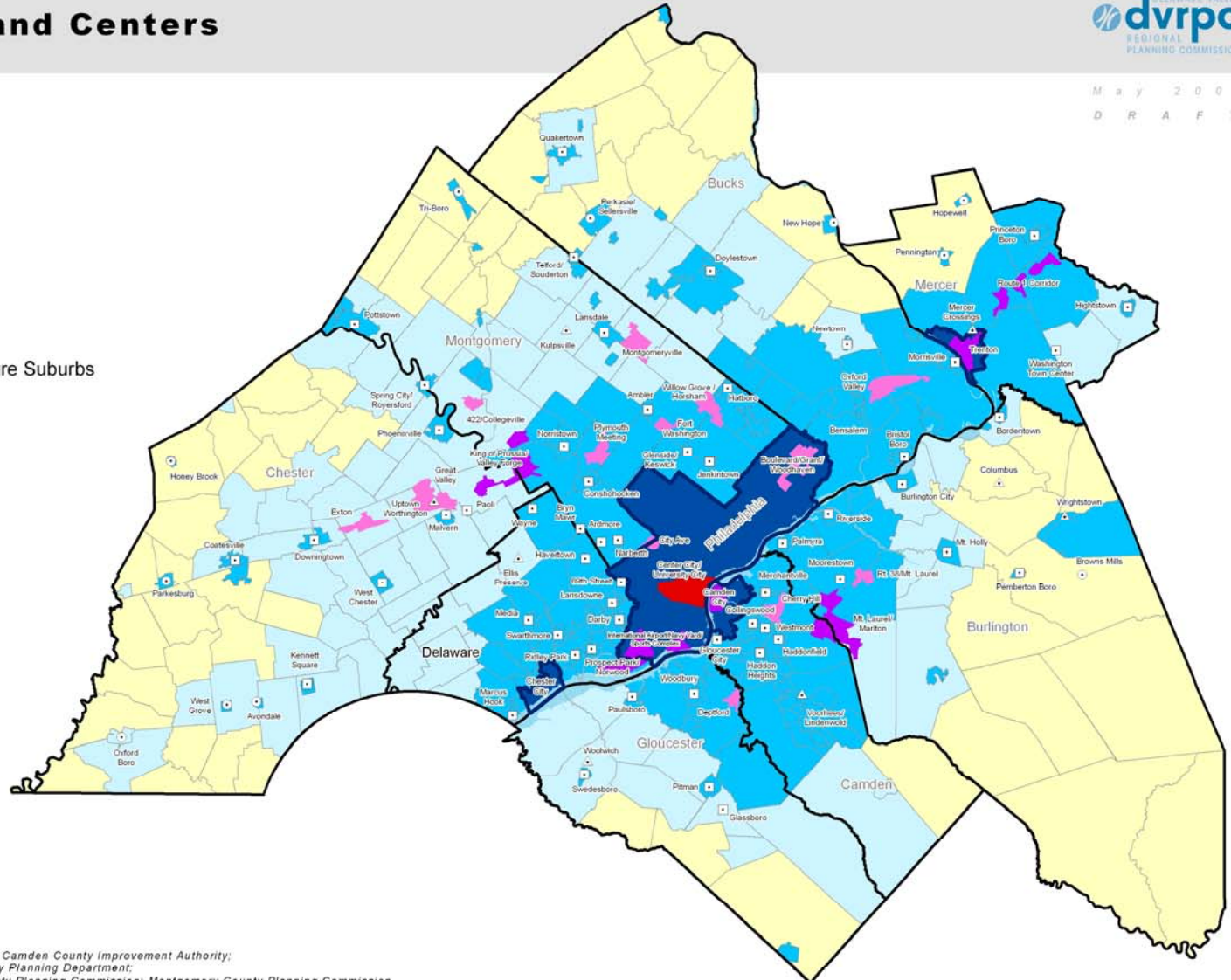
Sources: DVRPC 2009



PLANNING AREAS and CENTERS

Planning Areas and Centers

- Metropolitan Center
- Metropolitan Sub-Center
- Suburban Center
- Town Center
- Rural Center
- Planned Town Center
- Core Cities
- Developed Communities/Mature Suburbs
- Growing Suburbs
- Rural Areas



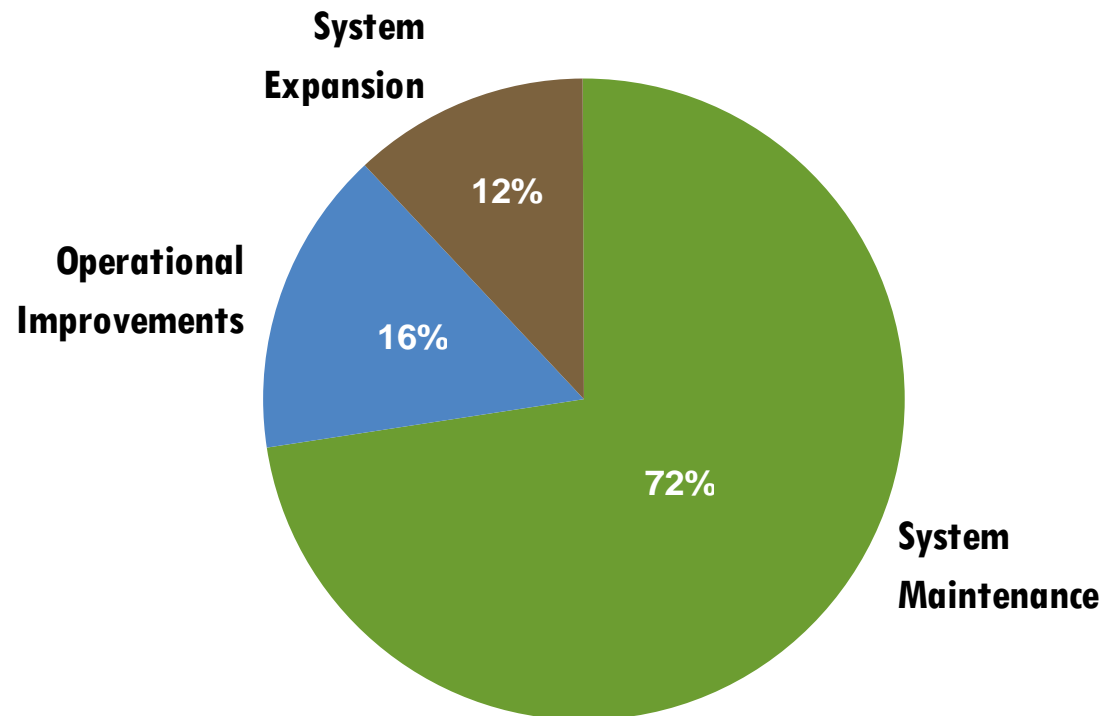
\$65 Billion Investment in our Transportation System



CONNECTIONS

THE REGIONAL PLAN FOR
A SUSTAINABLE FUTURE

Regional Highway and Transit Capital Expenditures (2009-2035)



MEETING PLAN GOALS: EVALUATING MAJOR REGIONAL PROJECTS



CONNECTIONS

THE REGIONAL PLAN FOR
A SUSTAINABLE FUTURE

Screening Criteria:

- Is the Project Located in an Existing Developed or Future Growth Area on the Land Use Plan Map?
- Is Widening Appropriate as per CMP? (Highway Projects Only)

Evaluation Criteria:

- Does it Serve a Plan Center? (Highway Projects Only)
- What is the Transit Score? (Transit Projects Only)
- What is the Environmental Impact?
- Is it Located in a High-Priority Corridor?
- Comparable Cost to Other Projects?
- Level of Support?
- Degree of Social Equity? (Transit Projects Only)

Key Challenges



CONNECTIONS

THE REGIONAL PLAN FOR
A SUSTAINABLE FUTURE

- Contribute \$100 million in local funding for transportation projects
- Protect 500,000 acres of open space
- Focus development in over 100 Centers
- Reduce greenhouse gas emissions by 50% by 2035

Next Steps: IMPLEMENTATION



CONNECTIONS

THE REGIONAL PLAN FOR
A SUSTAINABLE FUTURE

- Work with elected leaders, stakeholders, and the public to forward the policies to achieve the vision.
- Continue to develop specific strategies to achieve results and forward them through our work program.
- Develop performance measures and monitor progress toward Plan goals.

Implementation: OBSTACLES



CONNECTIONS

THE REGIONAL PLAN FOR
A SUSTAINABLE FUTURE

- **Fragmented Land-Use Control**
- **Resistance to “Action Steps”**
- **Fiscal Reality and Prioritization of Needs**

Implementation: TOOLS & TECHNIQUES



CONNECTIONS

THE REGIONAL PLAN FOR
A SUSTAINABLE FUTURE

- Facilitate
- Analyze
- Educate
- Promote

Implementation: APPROACH



CONNECTIONS

THE REGIONAL PLAN FOR
A SUSTAINABLE FUTURE

- Reach Out Early & Often and Cast a Wide Net
- Gain Consensus on Goals then Work on Strategies
- Identify Challenges
- Offer Alternatives
- Show Benefits & Costs



CONNECTIONS

THE REGIONAL PLAN FOR
A SUSTAINABLE FUTURE



WEB: www.dvrpc.org/connections

E-MAIL: plan@dvrpc.org
mboyer@dvrpc.org

