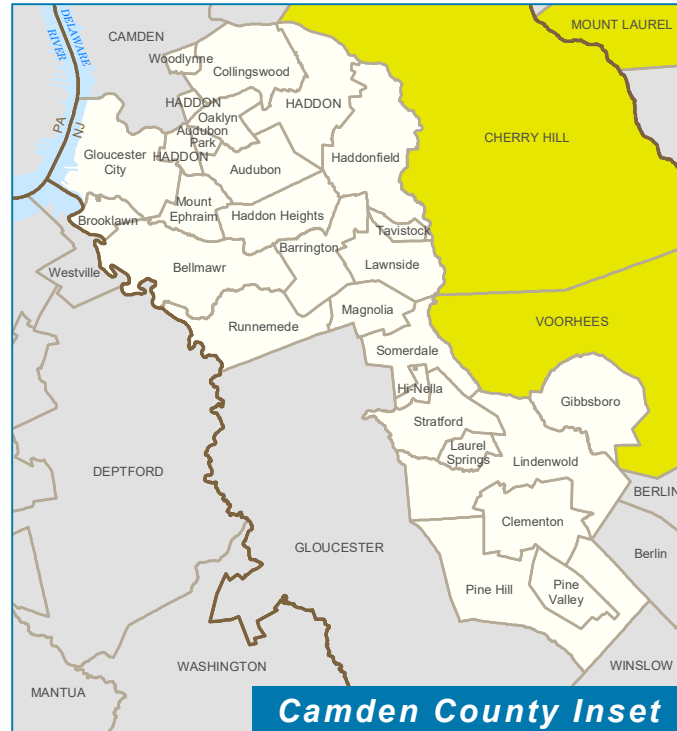

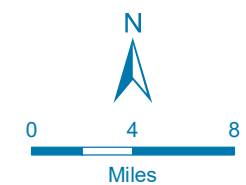
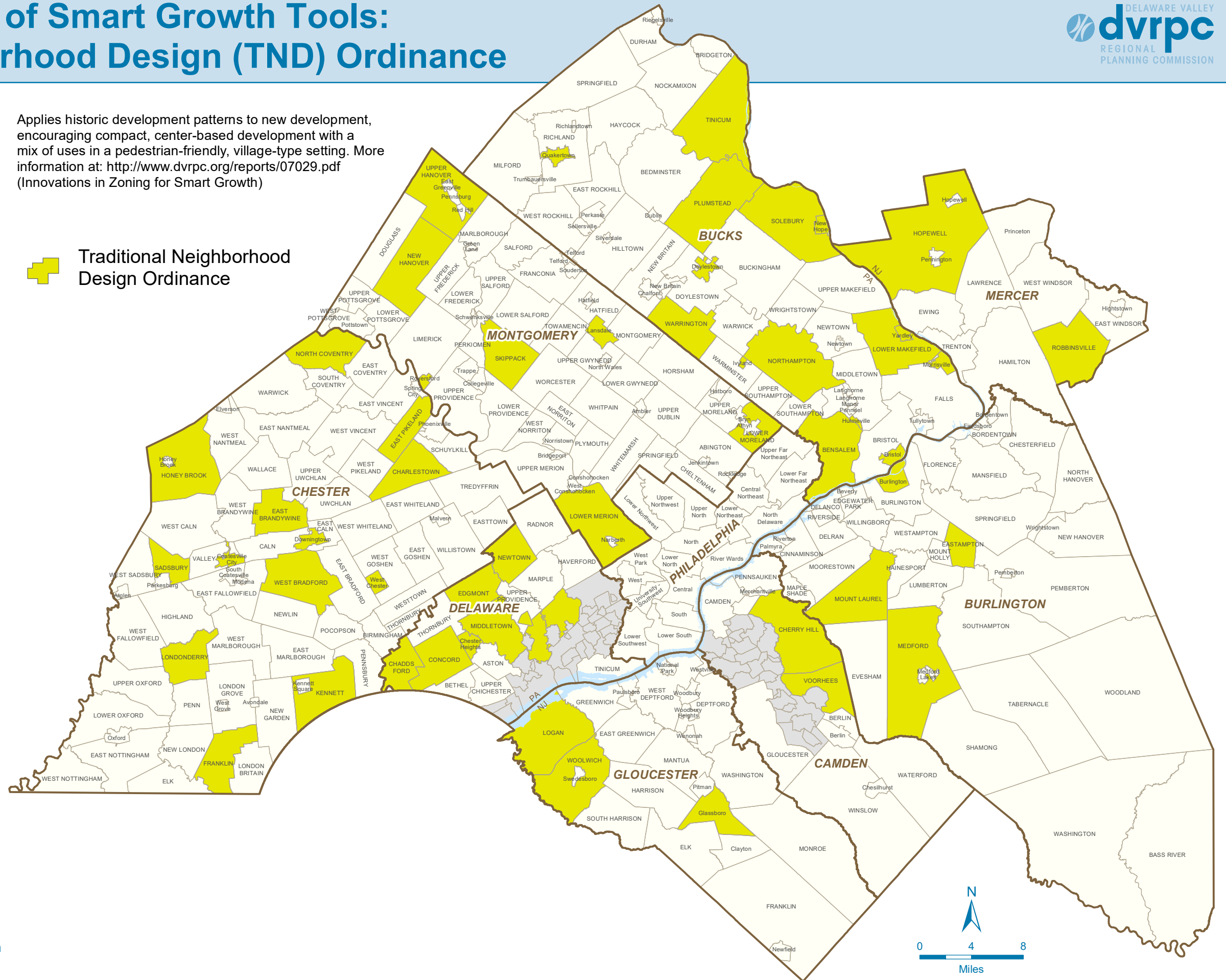
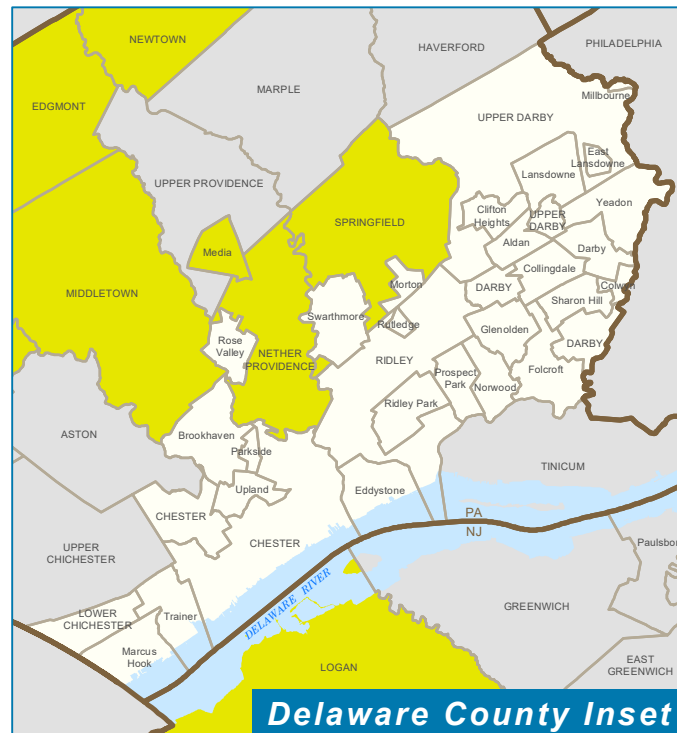


# Municipal Adoption of Smart Growth Tools: Traditional Neighborhood Design (TND) Ordinance



Applies historic development patterns to new development, encouraging compact, center-based development with a mix of uses in a pedestrian-friendly, village-type setting. More information at: <http://www.dvrpc.org/reports/07029.pdf> (Innovations in Zoning for Smart Growth)

 Traditional Neighborhood Design Ordinance



Date: July 2020, updated from 2014  
Source: County Planning Commissions and web research

\* Planning Districts are shown for City of Philadelphia