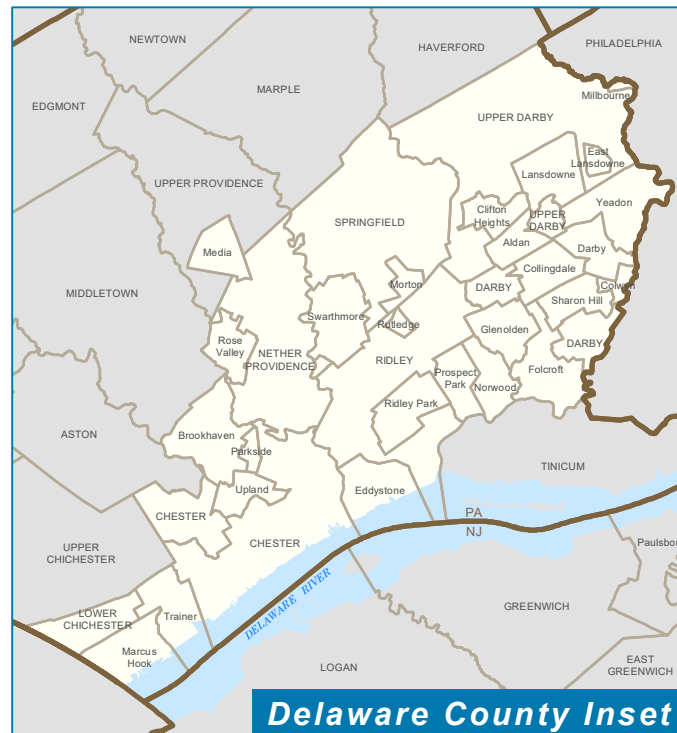
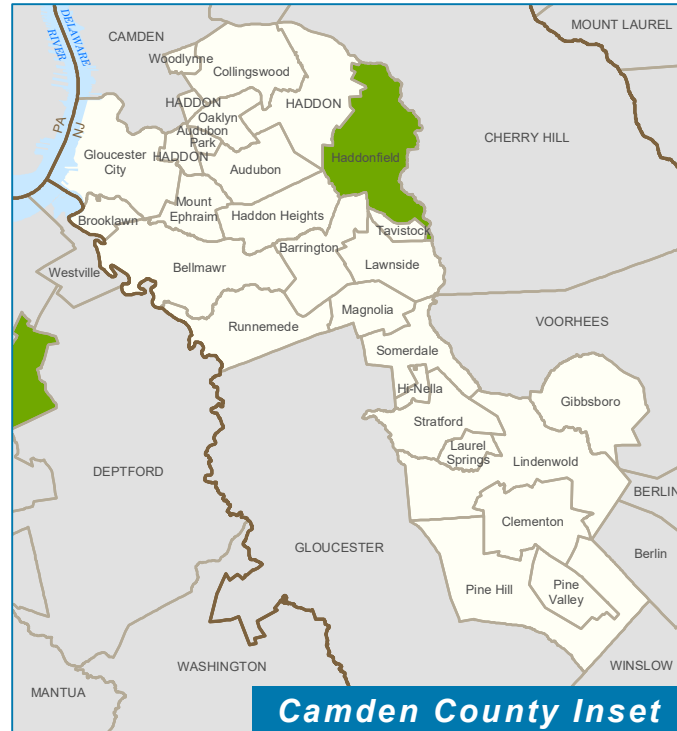
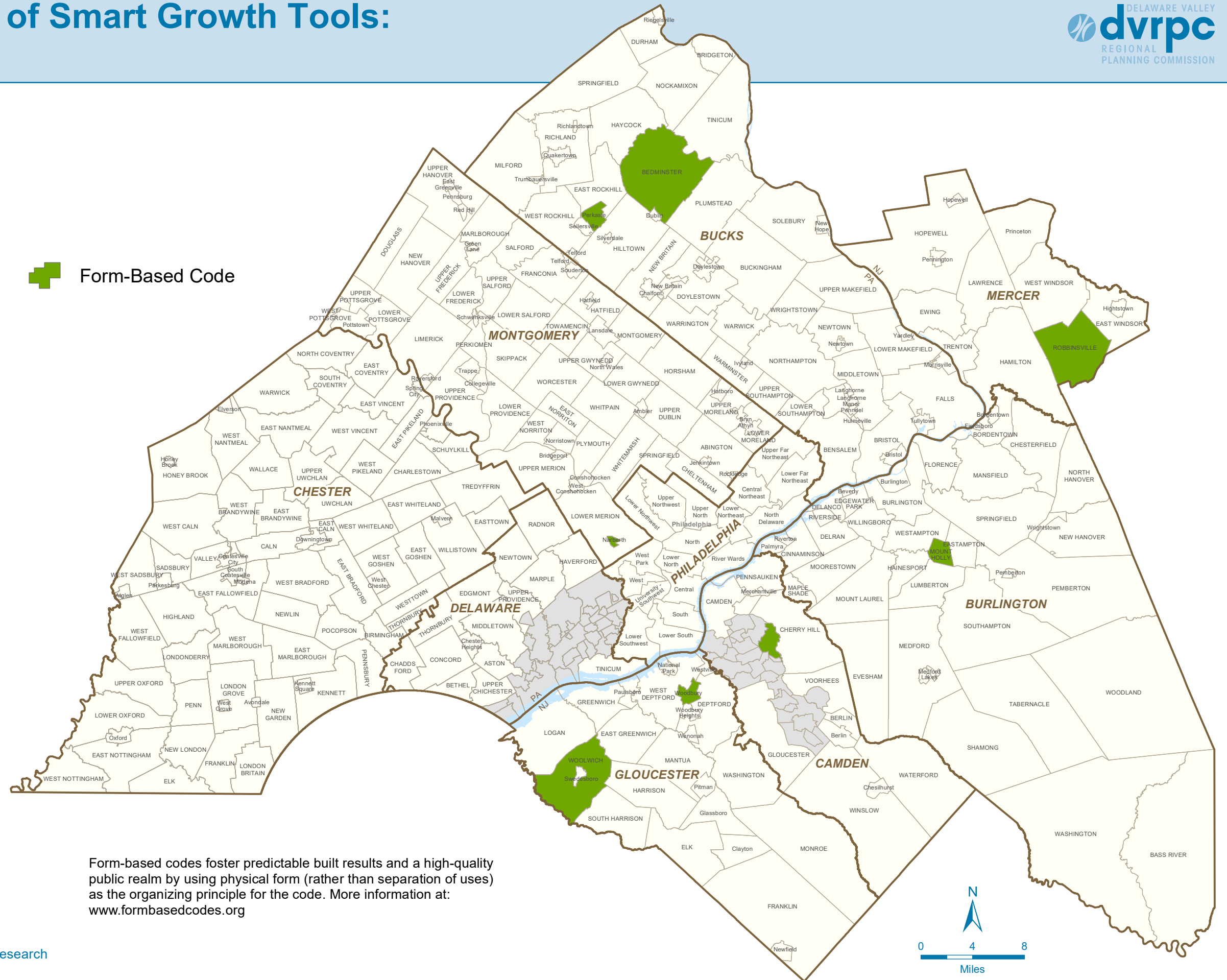


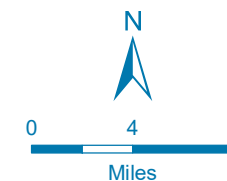
# Municipal Adoption of Smart Growth Tools: Form-Based Codes



Form-Based Code



Form-based codes foster predictable built results and a high-quality public realm by using physical form (rather than separation of uses) as the organizing principle for the code. More information at: [www.formbasedcodes.org](http://www.formbasedcodes.org)



Date: July 2020, updated from 2013  
 Source: DVRPC 2013 Municipal Community Survey,  
 2020 data from County Planning Commissions and web research

\* Planning Districts are shown for City of Philadelphia