

**NOW
INCLUDING
MAJOR
LAND USE
PROJECTS!**

IDENTIFY > ANALYZE > COMMUNICATE > COORDINATE > EDUCATE > INITIATE

CENTRAL JERSEY TRANSPORTATION FORUM

PLANNED PROJECTS STATUS REPORT

SPRING 2008



**Delaware Valley
Regional Planning
Commission**



The Delaware Valley Regional Planning Commission is dedicated to uniting the region's elected officials, planning professionals and the public with a common vision of making a great region even greater. Shaping the way we live, work and play, DVRPC builds consensus on improving transportation, promoting smart growth, protecting the environment and enhancing the economy. We serve a diverse region of nine counties: Bucks, Chester, Delaware, Montgomery and Philadelphia in Pennsylvania; and Burlington, Camden, Gloucester and Mercer in New Jersey. DVRPC is the federally designated Metropolitan Planning Organization for the Greater Philadelphia Region - leading the way to a better future.

Our logo is adapted from the official DVRPC seal, and is designed as a stylized image of the Delaware Valley. The outer ring symbolizes the region as a whole, while the diagonal bar signifies the Delaware River. The two adjoining crescents represent the Commonwealth of Pennsylvania and the State of New Jersey.

DVRPC is funded by a variety of funding sources including federal grants from the U.S. Department of Transportation's Federal Highway Administration (FHWA) and Federal Transit Administration (FTA), the Pennsylvania and New Jersey departments of transportation, as well as by DVRPC's state and local member governments. The authors, however, are solely responsible for its findings and conclusions, which may not represent the official views or policies of the funding agencies.

DVRPC fully complies with Title VI of the Civil Rights Act of 1964 and related statutes and regulations in all programs and activities. DVRPC's website may be translated into Spanish, Russian, and Traditional Chinese online by visiting www.dvrpc.org. Publications and other public documents can be made available in alternative languages or formats, if requested. For more information, please call (215) 238-2871.

TABLE OF CONTENTS

I.	How do the Projects in Central Jersey Add up?	1
	Contents of Report	1
	Transportation and Land Use	2
	Transportation Project Summary	3
	FY 2009 Draft TIP Preview	5
	NJDOT Project Development Process	7
	Detailed Phase List for NJDOT Projects	8
	Transportation Funding Sources	9
 II.	 Transportation Projects in Central Jersey	 11
	<i>Highway TIP Projects</i>	11
	<i>NJ Turnpike Authority Projects</i>	41
	<i>Transit TIP Projects</i>	45
	 TIP – Potential Projects (Study and Development)	 53
	 Projects Funded by Counties	 56
	 Map of TIP Projects	 59
	 Index of Projects by Database Number (DBNUM)	 61
 III.	 Major Land Use Projects in the Route 1 Corridor	 63
	Overview of Projects	63
	Land Use and Transportation Projects on Route 1	64
	Projects Outside of Forum Area	70
 Figures and Tables		
	Table 1: Types of Projects	3
	Table 2: Summary of East-West Access Projects	4
	Table 3: Pipeline 4 Projects	4
	Table 4: Projects Removed from the TIP in the DRAFT FY 2009-2018 Report	5
	Table 5: Capital Projects Added to the TIP in the DRAFT FY 2009-2018 Report	5
	Table 6: Draft Study & Development Program Updates	5
	Table 7: “Tier 2” Projects in the Forum Area	6
	Table 8: Range of Phases and Abbreviations	8
	Table 9: Funding Sources and Abbreviations	9
	Table 10: NJDOT Study and Development Projects	53
	Table 11: County Funded Projects	56
	Table 12: Index of Projects by Database Number (DBNUM)	61
	Table 13: Summary of Major Land Use Projects	75
	 Figure 1: Map of Planned Projects in Central Jersey	 59
	Figure 2: Map of Major Land Use and Transportation Projects	73

How do the Projects in Central Jersey Add up?

Contents of Report

The *Planned Projects Status Report* has regularly provided information on programmed transportation projects in Central New Jersey for over six years. It has covered projects that are listed in Transportation Improvement Programs (TIPs) for the Delaware Valley Regional Planning Commission (DVRPC) and North Jersey Transportation Planning Authority (NJTPA).

The *Planned Projects Status Report* continues to evolve to better assist the Central Jersey Transportation Forum (Forum) in reaching its adopted goals. Some features that have been added over the last three years are:

- Tables comparing the present TIP to the draft next TIP as far as it is known
- Major land use projects in the vicinity of US 1. This includes projects that have been proposed, are being planned, are under construction, or were recently completed by public or private entities
- Tables explaining additions and deletions since the previous edition
- Analysis of what this full set of projects means
- More focus on “real” projects - Full page descriptions are only included for projects that have progressed into the NJDOT Capital Program. Projects that are still in Study and Development are listed in a table, “TIP - Potential Projects (Study and Development)”
- Major transportation projects not in a TIP are invited for inclusion
- Ideas on how to make this a more useful publication are always welcome.

The municipalities included in the Central Jersey Transportation Forum are:

Hunterdon County

East Amwell Township

Mercer County

East Windsor Township

Hightstown Borough

Hopewell Borough

Hopewell Township

Lawrence Township

Pennington Borough

Princeton Borough

Princeton Township

Washington Township

West Windsor Township

Middlesex County

Cranbury Township

Jamesburg Borough

Monroe Township

Plainsboro Township

South Brunswick Township

Somerset County

Franklin Township

Hillsborough Township

Millstone Borough

Montgomery Township

Rocky Hill Borough

Transportation and Land Use

As population grows and demographics change, communities are faced with ever increasing and more complicated land use decisions. These decisions on what type of development is permitted, where projects are (or are not) permitted, and the form of the project are never made in a vacuum. New development at times is inevitable, but linking land use and transportation projects together can facilitate better decisions at both ends.

In New Jersey, land use decisions are made at the municipal level. The land use portion of the *Planned Projects Status Report* (Section III) is included to support discussions within and among Forum municipalities.

Section III of this report contains information concerning land use projects proposed, or recently completed by public or private entities in the vicinity of US 1. Projects are arranged by municipality, and are listed in one of the following three categories:

1. **Planning** – The project has not yet completed a final review stage. The project may have had some review or may be just speculative at this time
2. **Approved** – These projects have had a final review and construction may have started
3. **Complete** – Construction is now complete and the project is 'open'

Also included are projects that have not yet been submitted for review, as many of these projects may come to fruition some time in the future. These projects are listed as in planning to help identify what may be coming down the road.

In comparing this version of the report to the Summer, 2007 version, the majority of the projects have remained in the same stage of development. Several major projects that were in the planning stages last year are still in the planning stages, but many others have advanced closer to final approval. Several projects have progressed from planning to final approval, and are now under construction. Several communities are exploring developments around transit stations along the Northeast Corridor commuter rail line. While progress has been slowed at a few sites due to political changes, each community is pressing on to develop a final plan that is right for them.

Information was assembled from local newspaper articles and websites. Full references are available upon request. The draft summary was provided to municipalities and counties for comment or additional updates. The Summer, 2007 report covered project information from August 2006 through June 2007. The summary included here covers activity from June, 2007 through May, 2008. This information will also be posted on the web at:
<http://www.dvrpc.org/transportation/longrange/cjtf/plannedprojects.htm>

Transportation Project Summary

The projects described in this report are the responsibility of a wide range of agencies. These include the New Jersey Department of Transportation (NJDOT), New Jersey Transit, and the New Jersey Turnpike Authority, as well as county and municipal transportation projects being completed with federal dollars.

This report is prepared for general information purposes only. To obtain more details about a specific project, please contact the project's sponsor, NJDOT, or the capital programming staff of DVRPC or NJTPA. Information is also available at each MPO's website. Being listed in a TIP is a required step for a project to be funded, but is not a guarantee of funding. This report covers projects from the TIPs in effect as of May, 2008 and also includes preliminary information about the draft FY 2009-2018 TIP being developed for adoption over the summer.

The FY 2008 -2011 TIPs for DVRPC and NJTPA include 27 projects in the Central Jersey region in the Capital Program. Full information is provided in this report for each of these projects. These projects represent an investment of approximately \$612 million dollars of road and bridge funds over the TIP years. Transit projects are not included in this total because they cover a broader area than just the Forum. The New Jersey Turnpike widening project is also not included as it is the work of an independent authority.

The two tables that follow illustrate how these projects distribute overall transportation investments and opportunities across Central New Jersey. Developing an overview of the types of investments underway in the region helps to set individual projects in a broader context.

In the first table, projects are sorted by their primary type of improvement. Naturally, there is more than one way to categorize projects. Bridges, for example, could also be considered road projects. In this case bridges are a separate category because they are evaluated according to specific functional and structural criteria. As detailed below, bridge improvements account for about one-third of Central New Jersey's TIP projects, making them the most common project type in the region. Projects that focus on major roadway improvements share second place with projects to improve transit.

Table 1: Types of Projects

General Type	# of Projects
Bicyclist and Pedestrian Facilities	2
Bridges	11
Intersection/Safety	2
Road	8
Transit	8
Other - drainage, scenic byway, wetland preservation, etc.	4
Total	35

Source: DVRPC New Jersey TIP for FYs 2008-2010

In 2004, the Forum adopted an updated action plan in which improving east-west access in the region is one of its two top priorities. The table below highlights the current projects that address east-west access in Central New Jersey. Bridge projects are not included because the improvement of regional access is generally not their primary goal.

Table 2: Summary of East-West Access Projects

Projects Addressing the Forum's East-West Regional Access Goals

Project Name	General Type
Vaughn Drive Connector	Highway
Penns Neck Improvements (CR 571)	Highway
US 130 Pedestrian Bridge	Pedestrian/Bicyclist

Note: All the transit projects contain components that improve east-west access

Source: DVRPC New Jersey TIP for FYs 2008-2010

In addition to information about projects in the current TIP, this report also tracks change over time. There were no projects removed from the TIP since the Summer, 2007 report. Some projects under construction may have finished, but the adopted TIP is static; they would be removed in the next TIP and noted in the next edition of this report. No new Capital Program TIP projects were added since the last report.

Pipeline 4 projects are of a nature that can advance from problem statements directly (or with modest Final Design) to a NJDOT maintenance contract for completion. They tend to advance faster than projects in the other pipelines and are usually cost-effective, so they are a productive way to pursue solutions where appropriate. NJDOT has expressed interest in hearing more about solid projects to consider for this pipeline. For more information on the pipeline process, see "NJDOT Project Development Process" or contact NJDOT. The table below lists Pipeline 4 projects from the full TIP database:

Table 3: Pipeline 4 Projects

Project Name	DBNUM*	Notes
NJ 29, Scenic Byway Improvements, Signage	00362L1	
NJ 29, Washington Crossing Road, Operational Improvements (CR 546)	04341	Under Construction
NJ 32, Eastbound Park and Ride	05324	
NJ 32/ US 130, Friendship Road	05323	
NJ 33, Bentley Brook, Drainage Improvements	93247	
US 1, Franklin Corner Road/Bakers Basin Road, Interim Improvements	027A	
US 1, Franklin Corner Road/Bakers Basin Road, Pedestrian Improvements	04372	
US 130, Georges Road (CR 679)	05326	
US 130, South River/Cranbury Road (CR 535)	05325	
US 130/ NJ 133, East Windsor Pedestrian Improvements	00359	
US 130, Old Trenton Road	05322	

Source: DVRPC New Jersey TIP for FYs 2008-2010

*Database Number

FY 2009 Draft TIP Preview

A **Draft TIP Program for FY 2009-2018** is currently being prepared. Included below is a preview of Capital Program projects in the Forum area that will be dropped or added, according to information available in mid-May. It must be stressed that the information provided below refers to a **Draft TIP**, so it may change significantly.

Table 4: Projects Removed from the TIP in the DRAFT FY 2009-2018 Report

Project Name	DBNUM	Reason
CR 606, Studdiford Drive Bridge over South Branch of Raritan River, Replacement	NS0411	Funding Authorized through 2009 Completion Expected
I-95, Noise Barriers, Lawrence Township	94010A	Funding Authorized through 2009 Completion Expected
US 206, Arreton Road, Drainage Improvements	98423	Funding Authorized through 2009 Completion Expected

Source: DVRPC New Jersey TIP for FYs 2008-2010

Table 5: Capital Projects Added to the TIP in the DRAFT FY 2009-2018 Report

Project Name	DBNUM	Cost (in millions)
CR 602, Camp Meeting Avenue Bridge over Trenton Line	99405	\$6.25
NJ 31, Pennington Circle Safety Improvements	159A	\$4.2
US 1, Heathcote Brook Bridge	08357	\$4
US 1, Widening	93146	\$356.477
US 206, Stony Brook Bridges	326	\$6.799
Hillsborough Road and Homestead Road Bridges	08375	\$4

Source: DVRPC New Jersey TIP for FYs 2008-2010

Table 6: Draft Study & Development Program Updates

Project Name	DBNUM	FY 2008 Phase	FY 2009 Phase
I-295, Northbound Approach to US 1 Exits, ITS Improvements	06358	PD	FA
NJ 31, Bridge over CSX Railroad	08355	n/a	CD
NJ 31, Pennington Circle Safety Improvements	159A	n/a	CD
US 1, Middlesex County Operational Improvements	93146A	n/a	FA
US 1, Southbound, Nassau Park Boulevard to I-95, Safety Improvements	01330A	PD	FA
US 206, Hillsborough-Montgomery Gateway	08351	n/a	CD

Source: DVRPC New Jersey TIP for FYs 2008-2010

“Tier 2” Projects

In an effort to address the reality that road, highway, bridge, and transit projects often take longer than 4 years to bring to fruition, NJDOT is transitioning to a 10-year capital program beginning in fiscal year 2009. NJDOT has established a list of “Tier 2” projects in recognition of the fact that given current economic conditions, there are simply not enough resources to fund every project in the pipeline, even over a 10-year period. Projects selected for “Tier 2” status are those that cannot be funded based on current 10-year revenue estimates. However, if additional state or federal funds become available, these “Tier 2” projects could be funded within NJDOT’s 10-Year Capital Plan.

The difficult reality is that several projects in the Forum area have been placed on the “Tier 2” List in the Draft TIP. If they stay there as the TIP is finalized, it does not mean that these projects will never be realized. However, it does suggest that creative partnerships and funding solutions will be required for Tier 2 projects to be built in the near future. Some categories of projects will be affected more than others. For example, very few drainage projects are funded in the Draft TIP. Bridge projects, on the other hand, are a high priority for transportation improvement funding at present. Anyone who wishes to participate in the TIP development process and is not familiar with how to do so may contact DVRPC, NJTPA, or NJDOT.

The following table summarizes projects in the Forum area that have been placed on the “Tier 2” List, as of Draft TIP information available in Mid-May.

Table 7: “Tier 2” Projects in the Forum Area

DBNUM	Project Name	Cost (in millions)
031	US 1, Penns Neck Improvements	\$151.75
031B	Vaughn Drive Connector	\$34.684
04318	North of Cherry Hill Road, Drainage Improvements	\$1.5
04319	North of Quaker Road, Drainage Improvements	\$3.4
780	US 206, Old Somerville Road to Brown Avenue (15N)	\$107.6

Source: DVRPC New Jersey TIP for FYs 2008-2010

NJDOT Project Development Process

Projects start from a **Problem Statement**. A problem statement is a general description of an issue or project submitted to NJDOT. A problem statement can be submitted from within NJDOT, by MPOs, county governments, TMAs, municipal officials, the general public, or groups such as the Central Jersey Transportation Forum.

Study and Development (S&D)

Problem statements go through Tier 1 and Tier 2 screenings to determine whether and how they might best proceed. If a project is to progress within NJDOT, it is assigned to a pipeline. A pipeline represents the outline of steps for the project in both Study and Development and in the Capital Program. NJDOT designates the following four basic pipeline processes:

- Pipeline 1 is for major projects that will go through the most phases, starting with careful Concept Development. These projects require full-blown environmental review (Environment Impact Statements, Environmental Assessments, or Complex Categorical Exclusions)
- Pipeline 2 is for somewhat less complex projects than Pipeline 1
- Pipeline 3 is for projects that may involve minor Preliminary Design and environmental documentation before “graduating” to the TIP for Final Design
- Pipeline 4 is for straightforward, generally small scale projects that may be able to advance with minor design work from problem statement directly to Maintenance Contract without “graduating” to the TIP.

Depending on the pipeline assignment, a project may proceed through the following phases in S&D, usually done by NJDOT Division of Planning and Development, though sometimes done by a county or MPO.

- **Concept Development (CD)** results in conceptual solutions
- **Feasibility Assessment (FA)** results in an initially preferred alternative
- **Preliminary Engineering/Design (PD)** results in a final project scope and initial plans.

Capital Program

Projects emerging from S&D enter the draft project pool for a TIP. If a project is deemed “fatally flawed,” it will be terminated or recycled for reconsideration in S&D. Once a project is included in the Capital Program, it goes through the following phases, usually led by the NJDOT Division of Capital Program Management coordinated with previous work:

- **Final Design (FD)** results in final construction plans, specifications, and estimates. It may include final design/engineering, utility work, right-of-way acquisition, and environmental permitting
- **Construction (CON)** results in a completed project. It may include advertising for bids, awarding a contract, and building a project.

Detailed Phase List for NJDOT Projects

The page titled “NJDOT Project Development Process” provides an overview of how projects move through NJDOT. It describes the main phases that take an idea through to completion. In the interest of brevity, only the main phases were described. A TIP includes some more detailed phases that further divide the basic ones. This more detailed range of phases and their abbreviations are defined in the table below.

Table 8: Range of Phases and Abbreviations

Phase	Full Name
CAP	Capital Asset Construction
CD	Concept Development
CON	Construction
DBNUM	Database Number
DES	Final Design/Engineering
EC	Final Design/Engineering and Construction
ERC	Final Design/Engineering, Right-of-Way Acquisition, and Construction
FA	Feasibility Assessment
FD	Final Design
FSD	Final Scope Development
LPD	Local Preliminary Design
PD	Preliminary Design
PLS	Planning Study
PRD	Project Development/Preliminary Engineering
ROW	Right-of-Way Acquisition
SWI	Statewide Investment
UTI	Utilities
*Note:	An “L” preceding any phase means Local Agency Lead; otherwise, State DOT is the lead agency

Source: DVRPC New Jersey TIP for FYs 2008-2010

Transportation Funding Sources

The table below defines terms used in the TIP. These are federal funding sources unless otherwise noted. A broader range of funding sources covering transportation and land use projects is the 2006 *Municipal Resource Guide* (Publication 06043) available from DVRPC.

Table 9: Funding Sources and Abbreviations

Highway	
BR BOND DISC	State Bridge Discretionary funding
BRIDGE	Federal Bridge Program
BRIDGE-OFF	Federal Bridge Program (bridges not on federal aid roads)
CMAQ	Congestion Mitigation and Air Quality Improvement Program
DEMO	Special Funding from Congressional Earmarks
DEP-BOND	Special bond funding from Department of Environmental Protection
FERRY	Federal Ferry Funds
FTA	Federal Transit Administration
HSIP	Highway Safety Improvement Program
I-MAINT	Interstate Maintenance
MIN GAR	Minimum Guarantee funds (TEA-21)
NBIG	National Boating Infrastructure Grant
NHS	National Highway System
PL	Metropolitan Planning Funds - FHWAPL-FTA Metropolitan Planning Funds - FTA
SPR	Planning and Research
SPR-FTA	FTA - Planning and Research
STATE	State transportation funds
STP	Surface Transportation Program
STP-STU	STP – Urban Allocation
STP-SY	STP – Hazard Elimination
STP-TE	STP - Transportation Enhancement Program
TBD	To be determined

Transit	
COPS	State Certificates of Participation
CMAQ	Congestion Mitigation and Air Quality Improvement Program
DRPA	Delaware River Port Authority funds
FED OTHER	Federal non-transportation funds
FREEDOM	FTA 5317 Formula Program - New Freedom
SEC 5307	FTA Urban Area Formula Program
SEC 5309	FTA Capital Assistance Program
SEC 5310	Elderly and Persons with Disabilities Program
SEC 5311	Rural
SEC 5340-G	FTA 5340 Formula Program - Growing States
STATE	State
OTHER	Other
TBD	To be determined

Source: DVRPC New Jersey TIP for FYs 2008-2010

TIP-Highway Projects

TABLE OF CONTENTS

CR 514 (Amwell Road) Bridge over Neshanic River	13
CR 571 Vaughn Drive Connector	14
CR 602 (Wertsville Road) Bridge (E-166) over Back Brook	15
CR 602 (Wertsville Road) Bridge (E-174) over Tributary of Back Brook	16
CR 606 (Studdiford Drive) Bridge over South Branch of Raritan River	17
CR 683 Schalks Station Road Bridge	18
I-95 Noise Barriers, Lawrence Township	19
I-95 Reed Road Wetland Mitigation Site	20
NJ 27 Six Mile Run Bridge (3E)	21
NJ 27 Renaissance 2000, Bennetts Lane to Somerset Street	22
NJ 29 Moores Station Canal Crossing (AKA Pleasant Valley Road)	23
NJ 33 Conrail Bridge Removal	24
Princeton Township Roadway Improvements	25
US 1 Penns Neck Improvements (CR 571)	26
US 1 Millstone River, Bridge Replacement	28
US 1 Southbound, Quaker Bridge Mall Overpass	29
US 130 Pedestrian Bridge, Washington Township	30
US 130 Southbound, North of Deans Road to Vicinity of Lawrence Brook, Resurfacing	31
US 206 Arretton Road Drainage Improvements	33
US 206 Crusers Brook Bridge (41)	34
US 206 Bypass, Belle Mead-Griggstown Road to Old Somerville Road	35
US 206 CSX Bridge Replacement	36
US 206 North of Cherry Hill Road, Drainage Improvements	37
US 206 Old Somerville Road to Brown Avenue (15N)	38
Middlesex County Corridor Study (US 1)	39
Van Dyke Road and Greenwood Avenue Bridges over Trenton Branch	40

Note: for projects that appear in the NJTPA TIP, the project descriptions were taken from the NJTPA Online Transportation Information System (NOTIS). All other project descriptions were taken from the DVRPC FY 2008 TIP database.

CJTF - Project Status Report - Spring 2008
CR 514, Amwell Road Bridge over Neshanic River

Route: CR 514

Section: Amwell Road Bridge over the
Neshanic River

DBNUM: L002



County: Somerset

Municipalities: Hillsborough Twp.

Sponsor: NJDOT

This project will replace the existing Amwell Road bridge over the Neshanic River. The bridge is 24 feet between abutments with one lane in each direction. The roadway work includes minor widening to provide a 12-foot lane and 8-foot shoulder in each direction. The roadway approaches will also be realigned to provide adequate sight distance. As part of the project, the Amwell Road/Montgomery Road/Black Point Road intersection will be improved. The intersection improvements will consist of milling, resurfacing, new concrete curb construction and drainage improvements. The following special Federal appropriation was allocated to this project: FY 2006, SAFETEA-LU Section 1948 HPP \$844,000 (available 20% per year).

The project is programmed in the following TIP:

MPO	Plan	Phase	Year	Fund Source	Cost (in millions)
NJTPA	FY2008-2011 Program	CON	2008	HPP20	\$0.675
NJTPA	FY2008-2011 Program	CON	2008	STP-NJ	\$4.098
					Total: \$4.773

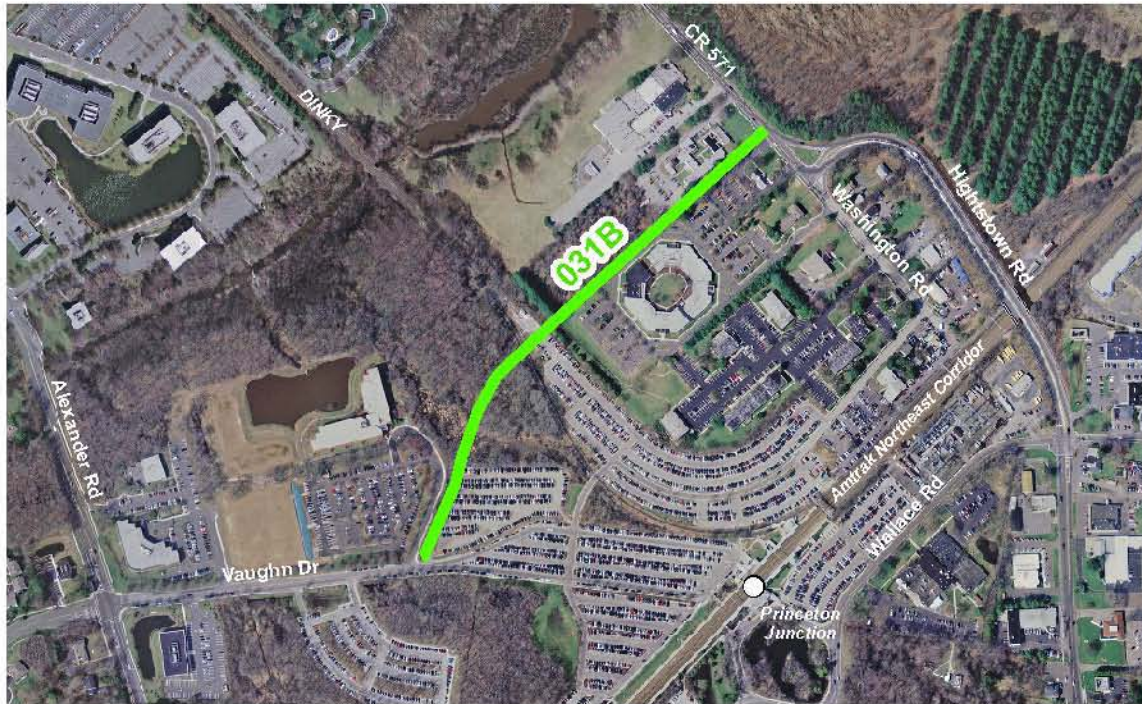
Note: see pages 7-8 for explanation of Phases; see page 9 for Fund Source definitions

CJTF - Project Status Report - Spring 2008
Vaughn Drive Connector

Route: CR 571

Section: Vaughn Drive Connector

DBNUM: 031B



County: Mercer

Municipalities: West Windsor Twp.

Sponsor: NJDOT

This project extends and improves Vaughn Drive and proposes a Connector or intersection at County Route 571, west of Amtrak's Northeast Corridor. The Vaughn Drive Connector coupled with the Route 1 in-a-cut project is meant to address regional traffic issues and facilitate travel in an east-west fashion without impacting Route 1 traffic.

The project is programmed in the following TIP:

MPO	Plan	Phase	Year	Fund Source	Cost (in millions)
DVRPC	FY2008-2011 Program	DES	2008	OTHER	\$2
DVRPC	FY2008-2011 Program	DES	2008	STP-STU	\$2
DVRPC	FY2008-2011 Program	ROW	2009	OTHER	\$5
DVRPC	FY2008-2011 Program	ROW	2009	STP-STU	\$5
DVRPC	FY2008-2011 Program	CON	2012	OTHER	\$12.342
DVRPC	FY2008-2011 Program	CON	2012	STP-STU	\$12.342
					Total: \$38.684

Note: see pages 7-8 for explanation of Phases; see page 9 for Fund Source definitions

CJTF - Project Status Report - Spring 2008
CR 602, Wertsville Road Bridge (E-166) over Back Brook

Route: CR 602 **Section:** Wertsville Road Bridge (E-166) over Back Brook **DBNUM:** NS9907



County: Hunterdon **Municipalities:** East Amwell Twp. **Sponsor:** Hunterdon

This project includes the replacement of the existing functionally obsolete Hunterdon County Bridge E166, which carries County Route 602 over the Back Brook. The existing structure, which carries two 10-foot, 10-inch lanes, will be replaced with a new structure carrying two 12-foot lanes and two six-foot shoulders. The project will also improve an existing culvert located to the west of Bridge E166, which carries County Route 602 over an unnamed Tributary to the Back Brook. This culvert will be replaced with a precast or rigid frame structure. The roadway approach work will be essentially on the same geometric alignment as the existing structure, while better defining the intersection of Dutch Lane, which falls between the bridge and the culvert.

The project is programmed in the following TIP:

MPO	Plan	Phase	Year	Fund Source	Cost (in millions)
NJTPA	FY2008-2011 Program	ROW	2008	STP-NJ	\$0.125
NJTPA	FY2008-2011 Program	CON	2009	STP-NJ	\$3.1
					Total: \$3.225

Note: see pages 7-8 for explanation of Phases; see page 9 for Fund Source definitions

CJTF - Project Status Report - Spring 2008
CR 602, Wertsville Road Bridge (E-174) over Tributary of Back Brook

Route: CR 602 **Section:** Wertsville Road Bridge (E-174) over Tributary of Back Brook **DBNUM:** NS9906



County: Hunterdon **Municipalities:** East Amwell Twp. **Sponsor:** Hunterdon

This project includes the replacement of the existing functionally obsolete Hunterdon County Bridge E174, which carries County Route 602 over a Tributary to the Back Brook. The existing structure, which carries two 12-foot lanes, will be replaced with a new structure carrying two 12-foot lanes and two six-foot shoulders. The project will also improve the substandard horizontal alignment of the roadway approaches.

This project is programmed in the following TIP:

MPO	Plan	Phase	Year	Fund Source	Cost (in millions)
NJTPA	FY2008-2011 Program	ROW	2008	STP-NJ	\$0.2
NJTPA	FY2008-2011 Program	CON	2009	STP-NJ	\$3.4
					Total: \$3.6

Note: see pages 7-8 for explanation of Phases; see page 9 for Fund Source definitions

CJTF - Project Status Report - Spring 2008
CR 606, Studdiford Drive Bridge over South Branch
of Raritan River, Replacement

Route: CR 606

Section: Studdiford Drive Bridge
over South Branch of the
Raritan River, Replacement

DBNUM: NS0411



County: Somerset

Municipalities: Hillsborough Twp.
Branchburg Twp.

Sponsor: Somerset

Constructed in 1929, County Bridge #18D0702 spans the South Branch of the Raritan River on Studdiford Drive in the Township of Branchburg and the Township of Hillsborough. The bridge is functionally obsolete due to poor deck geometry and structurally deficient as a result of the poor condition of its substructure. The bridge is weight posted at 18 tons and is adjacent to the South Branch Historic District. The County proposes to replace the bridge. The proposed bridge will carry a 36' wide roadway with a 5' wide sidewalk on the north side.

The project is programmed in the following TIP:

MPO	Plan	Phase	Year	Fund Source	Cost (in millions)
NJTPA	FY2008-2011 Program	CON	2008	STP-NJ	\$5
					Total: \$5

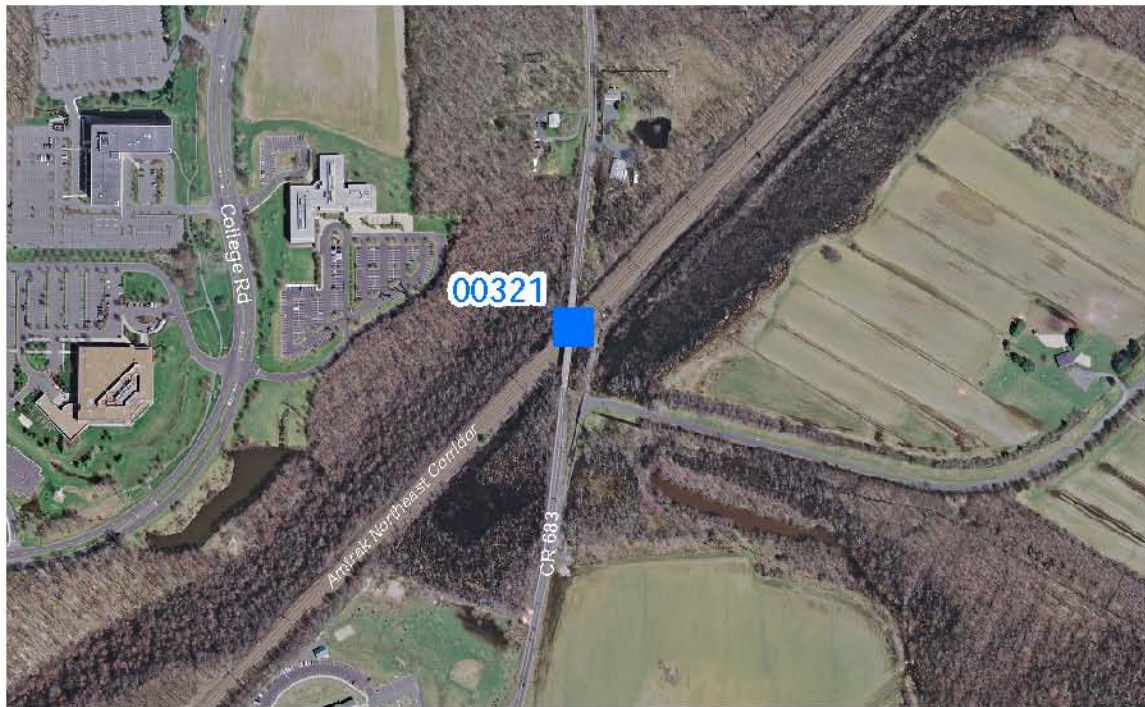
Note: see pages 7-8 for explanation of Phases; see page 9 for Fund Source definitions

CJTF - Project Status Report - Spring 2008
Schalks Station Road Bridge, CR 683

Route: CR 683

Section: Schalks Station Road Bridge

DBNUM: 00321



County: Middlesex

Municipalities: Plainsboro Twp.

Sponsor: NJDOT

This project will provide for the replacement of the bridge deck that will maintain the existing steel superstructure and provide bicycle/pedestrian accessibility. A shared bicycle/pedestrian sidewalk lane will be provided through cantilever addition on the through girders along both the east and west sides of Schalk's Crossing Road. Repairs will be made to the substructure. Prior to any bridge rehabilitation, the railroad catenary system will be modified. Roadway improvements would include milling and resurfacing the existing roadway approaches for tie-ins to the bridge.

This project is programmed in the following TIP:

MPO	Plan	Phase	Year	Fund Source	Cost (in millions)
NJTPA	FY2008-2011 Program	DES	2008	STP-NJ	\$0.8
NJTPA	FY2008-2011 Program	UTI	2009	STP-NJ	\$0.2
NJTPA	FY2008-2011 Program	CON	2010	STP-NJ	\$4.711
					Total: \$5.711

Note: see pages 7-8 for explanation of Phases; see page 9 for Fund Source definitions

CJTF - Project Status Report - Spring 2008
I-95 Noise Barriers, Lawrence Township

Route: I-95

Section: Noise Barriers,
Lawrence Township

DBNUM: 94010A



County: Mercer

Municipalities: Lawrence Twp.

Sponsor: NJDOT

Type II noise barriers are proposed from the vicinity of Lawrenceville Road (Route 206) and West Church Street.

This project is programmed in the following TIP:

MPO	Plan	Phase	Year	Fund Source	Cost (in millions)
DVRPC	FY2008-2011 Program	CON	2008	STATE	\$3.223
					Total: \$3.223

Note: see pages 7-8 for explanation of Phases; see page 9 for Fund Source definitions

CJTF - Project Status Report - Spring 2008
I-95, Reed Road Wetland Mitigation Site

Route: I-95 **Section:** Reed Road Wetland Mitigation Site **DBNUM:** 9194A



County: Mercer **Municipalities:** Ewing Twp.
Hopewell Twp. **Sponsor:** NJDOT

This project will build the second of two wetland mitigation sites required for the mitigation of wetlands impacted by the I-95, Scotch Road project. The wetland mitigation site, encompassing approximately one acre in the townships of Ewing and Hopewell will be cleared, regraded, and planted with wetland and transition area seed mixes to create wetlands with adjoining buffer area. Approximately 100 feet of the stream bank of Ewing Creek will also be stabilized. This work has been approved by NJDEP under Stream Encroachment Permit No. 1102-00-0004.5.

This project is programmed in the following TIP:

MPO	Plan	Phase	Year	Fund Source	Cost (in millions)
DVRPC	FY2008-2011 Program	DES	2008	STATE	\$0.168
DVRPC	FY2008-2011 Program	CON	2009	STATE	\$1.487
					Total: \$1.655

Note: see pages 7-8 for explanation of Phases; see page 9 for Fund Source definitions

CJTF - Project Status Report - Spring 2008
NJ 27 Six Mile Run Bridge

Route: NJ 27

Section: Six Mile Run Bridge (3E)

DBNUM: 146



County: Middlesex
Somerset

Municipalities: Franklin Twp.
North Brunswick Twp.

Sponsor: NJDOT

The existing structure will be replaced on the same alignment. The existing structure has two 11-foot travel lanes and shoulders of varying width. The new structure will have two 12-foot travel lanes and 10-foot shoulders, along with a sidewalk on the western side of the structure.

This project is programmed in the following TIP:

MPO	Plan	Phase	Year	Fund Source	Cost (in millions)
NJTPA	FY2008-2011 Program	CON	2009	STATE	\$2.866
					Total: \$2.866

Note: see pages 7-8 for explanation of Phases; see page 9 for Fund Source definitions

CJTF - Project Status Report - Spring 2008
NJ 27, Renaissance 2000, Bennetts Lane to Somerset Street

Route: NJ 27 **Section:** Renaissance 2000, Bennetts Lane to Somerset Street **DBNUM:** 97079



County: Middlesex **Municipalities:** New Brunswick City **Sponsor:** NJDOT
Somerset North Brunswick Twp.
Franklin Twp.

Three lanes of travel will be provided on Route 27 for the majority of the project limits, with a single travel lane in each direction and a center, two-way left-turn lane. Between Bennetts Lane and How Lane/Veronica Avenue, there will be one northbound lane and two southbound lanes. Additional lanes are provided at select intersections in response to traffic volume demand.

This project is programmed in the following TIP:

MPO	Plan	Phase	Year	Fund Source	Cost (in millions)
NJTPA	FY2008-2011 Program	ROW	2008	STP	\$1.7
NJTPA	FY2008-2011 Program	CON	2011	STATE	\$7.742
					Total: \$9.442

Note: see pages 7-8 for explanation of Phases; see page 9 for Fund Source definitions

CJTF - Project Status Report - Spring 2008
NJ 29, Moores Station Canal Crossing (AKA Pleasant Valley Road)

Route: NJ 29 **Section:** Moores Station Canal Crossing (AKA Pleasant Valley Road) **DBNUM:** 00362F



County: Mercer **Municipalities:** Hopewell Twp. **Sponsor:** NJDOT

This project will provide access to the D&R Canal towpath trail via a bicycle and pedestrian crossing and an opportunity to educate the public about the history of the canal. The project will provide for the construction of an A-frame swing bridge crossing of the D&R Canal and improvements to the existing parking area. Also included is a new boat or canoe dock and a new kiosk sign.

This project is programmed in the following TIP:

MPO	Plan	Phase	Year	Fund Source	Cost (in millions)
DVRPC	FY2008-2011 Program	CON	2009	CMAQ	\$1.3
					Total: \$1.3

Note: see pages 7-8 for explanation of Phases; see page 9 for Fund Source definitions

CJTF - Project Status Report - Spring 2008
NJ 33, Conrail Bridge Removal

Route: NJ 33

Section: Conrail Bridge Removal

DBNUM: 9101



County: Mercer

Municipalities: Washington Twp.

Sponsor: NJDOT

The project will provide for the elimination of the existing railroad bridge on essentially the same horizontal alignment. An at-grade rail crossing is proposed. The improvements also include widening, reconstruction and safety improvements for the Route 33 and Route 130 intersection as well as upgrading the traffic signal, pedestrian movements and signing. A reverse loop ramp is proposed from Route 130 southbound to Route 33 eastbound to provide for left turn movements to CR 526. Approximately 8 driveways will be adjusted through the New Jersey Highway Access Code due to safety concerns.

This project is programmed in the following TIP:

MPO	Plan	Phase	Year	Fund Source	Cost (in millions)
DVRPC	FY2008-2011 Program	CON	2009	STATE	\$11.173
					Total: \$11.173

Note: see pages 7-8 for explanation of Phases; see page 9 for Fund Source definitions

CJTF - Project Status Report - Spring 2008
Princeton Township Roadway Improvements

Route: N/A	Section: Princeton Township Roadway Improvements	DBNUM: HP01010
-------------------	---	-----------------------

County: Mercer	Municipalities: Princeton Twp.	Sponsor: Princeton Twp.
-----------------------	---------------------------------------	--------------------------------

This project will provide for roadway improvements in the vicinity of the municipal complex. Roadways to be improved include: Valley, Mount Lucas, Terhune, and Cherry Hill.

The following special Federal appropriations were allocated to this project. FY 2001/Section 378/45A \$498,900 (balance available \$498,900).

The project is programmed in the following TIP:

MPO	Plan	Phase	Year	Fund Source	Cost (in millions)
DVRPC	FY2008-2011 Program	ERC	2008	DEMO	\$0.4989
					Total: \$0.4989

Note: see pages 7-8 for explanation of Phases; see page 9 for Fund Source definitions

CJTF - Project Status Report - Spring 2008
US 1, Penns Neck Improvements (CR 571)

Route: US 1
CR 571

Section: Penns Neck Improvements

DBNUM: 031



County: Mercer

Municipalities: West Windsor Twp.

Sponsor: NJDOT

The purpose of this project is to address traffic congestion, mobility constraints and safety concerns on Route 1 and the east-west cross streets in the Penns Neck area. The Final EIS (Environmental Impact Statement) and Record of Decision have resulted in the selection of the preferred alternative which will include Route 1 in a cut at Washington Road, with Washington Road crossing over Route 1; a new grade-separated, single-point interchange at Harrison Street; a new west side connector road parallel to Lower Harrison Street connecting the new Harrison Street interchange with existing Harrison Street near the D&R Canal crossing; a one-way frontage road system on both sides of Route 1 between Washington Road and the new Harrison Street interchanges; and a Vaughn Drive Connector Road located west of existing Station Drive, connecting Washington Road and existing Vaughn Drive. Bicycle/pedestrian crossings of Route 1 will also be studied. The Vaughn Drive connector has since been broken out as a separate project.

This project is programmed in the following TIP:

MPO	Plan	Phase	Year	Fund Source	Cost (in millions)
DVRPC	FY2008-2011 Program	DES	2009	NHS	\$7
DVRPC	FY2008-2011 Program	ROW	2011	NHS	\$10
DVRPC	FY2008-2011 Program	ROW	2012	NHS	\$13.5
DVRPC	FY2008-2011 Program	UTI	2011	NHS	\$6
DVRPC	FY2008-2011 Program	UTI	2012	NHS	\$6
DVRPC	FY2008-2011 Program	CON	2012	NHS	\$159.25
					Total: \$201.75

Note: see pages 7-8 for explanation of Phases; see page 9 for Fund Source definitions

CJTF - Project Status Report - Spring 2008
US 1, Millstone River, Bridge Replacement

Route: US 1 **Section:** Millstone River, Bridge Replacement **DBNUM:** 031A



County: Mercer **Municipalities:** West Windsor Twp. **Sponsor:** NJDOT
Middlesex Plainsboro Twp.

This project is part of the Route 1, Penns Neck Improvements and will replace the bridge over the Millstone River as an independent project. The Millstone River bridge was constructed in 1928 and rehabilitated in 1959. The existing three-span bridge is 104 feet long and 76 feet wide. The structure is in poor condition. The bridge carries six travel lanes of Route 1 with no shoulders or sidewalks on either side. The existing bridge also carries gas, water, telephone and fiber optic utilities. The new structure will be two spans, 110 feet long and 126 feet wide and will accommodate six travel lanes with full shoulders/auxiliary lanes for bicycles and two sidewalks for pedestrians.

This project is programmed in the following TIP:

MPO	Plan	Phase	Year	Fund Source	Cost (in millions)
DVRPC	FY2008-2011 Program	ROW	2008	STATE	\$0.4
NJTPA	FY2008-2011 Program	ROW	2008	STATE	\$0.4
DVRPC	FY2008-2011 Program	CON	2009	BRIDGE	\$7.73
NJTPA	FY2008-2011 Program	CON	2009	BRIDGE	\$7.73
					Total: \$16.26

Note: see pages 7-8 for explanation of Phases; see page 9 for Fund Source definitions

CJTF - Project Status Report - Spring 2008
US 1, Southbound, Quaker Bridge Mall Overpass

Route: US 1

Section: Southbound, Quaker
Bridge Mall Overpass

DBNUM: 01330A1



County: Mercer

Municipalities: Lawrence Twp.

Sponsor: NJDOT

This project will provide improved traffic operations and safety conditions at the southbound ramp exiting Quaker Bridge Mall. The proposed improvement may provide for the addition of a 15-foot auxiliary lane extending from the loop ramp from the Quaker Bridge Mall overpass to Route 1 southbound for approximately 0.40 mile. The new auxiliary lane would then taper back to the existing three-lane roadway before reaching the exit ramps for the I-95/I-295 interchange. This concept is expected to be compatible with future mid-term and long-term projects in this area.

The project is programmed in the following TIP:

MPO	Plan	Phase	Year	Fund Source	Cost (in millions)
DVRPC	FY2008-2011 Program	DES	2008	HSIP	\$1.376
DVRPC	FY2008-2011 Program	ROW	2009	HSIP	\$2.5
DVRPC	FY2008-2011 Program	CON	2011	HSIP	\$3.2
					Total: \$7.076

Note: see pages 7-8 for explanation of Phases; see page 9 for Fund Source definitions

CJTF - Project Status Report – Spring 2008
US 130 Pedestrian Bridge, Washington Township

Route: US 130

Section: Pedestrian Bridge,
Washington Township

DBNUM: 98535



County: Mercer **Municipalities:** Washington Twp. **Sponsor:** Washington Twp.

This project will provide for the construction of a pedestrian bridge across Route 130.

The following special Federal appropriations were allocated to this project. TEA-21/Q92 \$2,306,474 (balance available \$2,306,474).

The project is programmed in the following TIP:

MPO	Plan	Phase	Year	Fund Source	Cost (in millions)
DVRPC	FY2008-2011 Program	CON	2009	DEMO	\$2.306474
					Total: \$2.306474

Note: see pages 7-8 for explanation of Phases; see page 9 for Fund Source definitions

CJTF - Project Status Report - Spring 2008
US 130, Southbound, North of Deans Road to Vicinity of
Lawrence Brook, Resurfacing

Route: US 130

Section: Southbound, North of
Deans Road to Vicinity of
Lawrence Brook, Resurfacing

DBNUM: 07312



County: Middlesex

Municipalities: South Brunswick Twp.
North Brunswick Twp.

Sponsor: NJDOT

The scope of this project is to preserve the integrity of the roadway by maintaining the pavement structure, improving ride quality and restoring skid resistance. The Pavement Management System has identified this highway segment as deficient in both ride quality and surface distress. The existing southbound roadway within the project limits consists of two 12-foot concrete travel lanes except between mileposts 80.21 - 80.30 where a third asphalt lane exists. The outside shoulder consists of asphalt. The opposing traffic is separated by a grass median.

The suggested roadway treatments are for the concrete lanes, concrete pavement rehabilitation followed by micro-surfacing and then overlay with a two-inch hot mix asphalt; the asphalt lane will have an overlay of two-inches of hot mix asphalt; the outside shoulder will be milled to an average depth of one inch and then have an overlay of two inches of hot mix asphalt.

This project is programmed in the following TIP:

MPO	Plan	Phase	Year	Fund Source	Cost (in millions)
NJTPA	FY2008-2011 Program	CON	2009	STATE	\$1.75
					Total: \$1.75

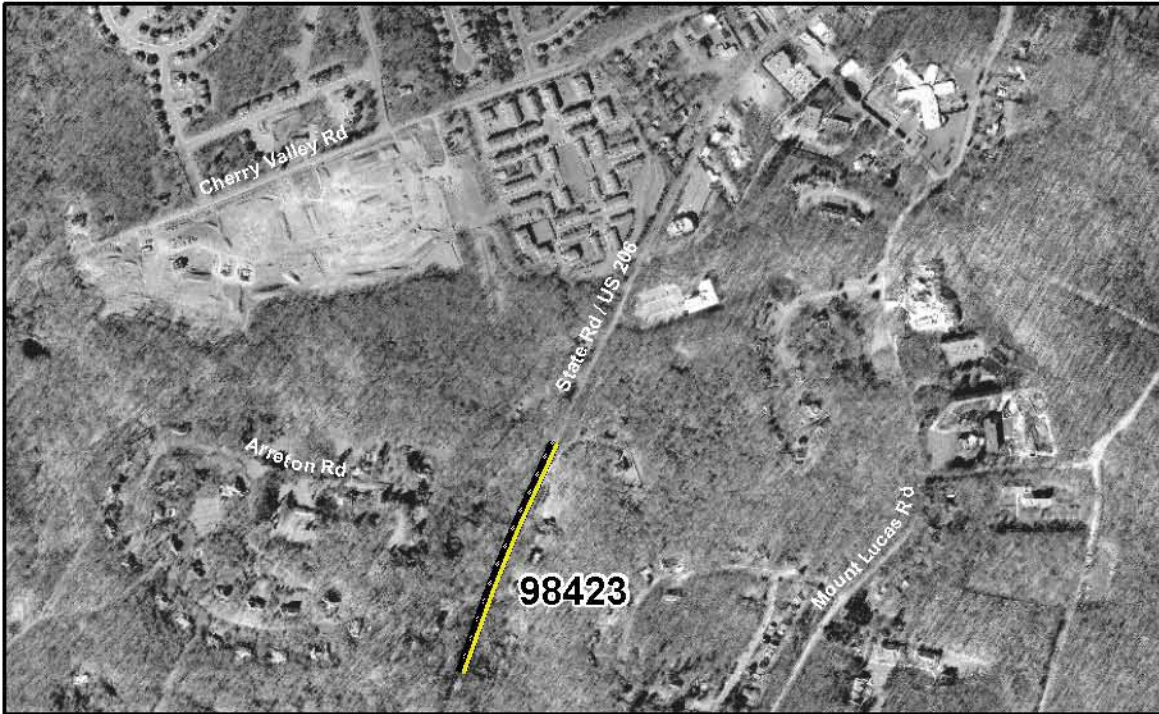
Note: see pages 7-8 for explanation of Phases; see page 9 for Fund Source definitions

CJTF - Project Status Report - Spring 2008
US 206, Arreton Road, Drainage Improvements

Route: US 206

Section: Arreton Road, Drainage
Improvements

DBNUM: 98423



County: Mercer

Municipalities: Princeton Twp.

Sponsor: NJDOT

The existing 36-inch culvert at Arreton Road will be replaced with a 54-inch culvert as well as installing a Gabion lining to protect the eroded embankment on both sides of the roadway. A catch basin and connecting pipe to the existing culvert north of Arreton Road will be constructed at the bottom of the driveway to reduce ponding on Route 206. South of Arreton Road, the embankment protection will be composed of Gabion Baskets and Reno Mattresses, to limit the extent of tree clearing needed. North of Arreton Road, the lining will be composed entirely of Gabion Baskets.

This project is programmed in the following TIP:

MPO	Plan	Phase	Year	Fund Source	Cost (in millions)
DVRPC	FY2008-2011 Program	CON	2008	STATE	\$1.172
					Total: \$1.172

Note: see pages 7-8 for explanation of Phases; see page 9 for Fund Source definitions

CJTF - Project Status Report - Spring 2008
US 206, Crusers Brook Bridge (41)

Route: US 206

Section: Crusers Brook Bridge (41)

DBNUM: 94060



County: Somerset

Municipalities: Montgomery Twp.

Sponsor: NJDOT

This project will provide for the replacement of the existing structure which is in poor condition due to the condition of the superstructure and inadequate deck geometry. Also, the structure is potentially scour critical since the existing abutments are not founded on piles. The structure will be widened from 30 feet to 44 feet to include full 10-foot shoulders instead of the current 3-foot shoulders. The piers and abutments will be founded on piles. The piers will be wide enough to accommodate a separate pedestrian walkway on the west side of the bridge.

This project is programmed in the following TIP:

MPO	Plan	Phase	Year	Fund Source	Cost (in millions)
NJTPA	FY2008-2011 Program	ROW	2008	STATE	\$0.853
NJTPA	FY2008-2011 Program	CON	2010	BRIDGE	\$6.449
					Total: \$7.302

Note: see pages 7-8 for explanation of Phases; see page 9 for Fund Source definitions

CJTF - Project Status Report - Spring 2008
US 206 Bypass, Belle Mead-Griggstown Road to
Old Somerville Road (14A 15A)

Route: US 206

Section: Belle Mead-Griggstown Road
to Old Somerville Road (14A 15A)

DBNUM: 779



County: Somerset

Municipalities: Hillsborough Twp.
Montgomery Twp.

Sponsor: NJDOT

This project will provide for construction of a segment of Route 206 on new alignment, bypassing a segment of existing highway which has serious congestion and safety problems. The new segment of roadway will consist of four 12-foot travel lanes, two 12-foot outside shoulders, two five-foot inside shoulders, a 20-foot grass median, and two 15-foot outside borders. Advance utility work will be performed on the Duke Energy pipeline, Buckeye pipeline and AT&T facilities. This project is funded under the provisions of Section 13 of P.L. 1995, c.108. This is a multi-year funded Federal-aid construction project. Total Federal-aid needed for construction is anticipated to be \$160,700,000.

The project is programmed in the following TIP:

MPO	Plan	Phase	Year	Fund Source	Cost (in millions)
NJTPA	FY2008-2011 Program	CON	2009	STATE	\$25
NJTPA	FY2008-2011 Program	CON	2010	STATE	\$25
NJTPA	FY2008-2011 Program	CON	2011	STATE	\$25
NJTPA	FY2008-2011 Program	CON	2012	STATE	\$85.7
					Total: \$160.7

Note: see pages 7-8 for explanation of Phases; see page 9 for Fund Source definitions

CJTF - Project Status Report - Spring 2008
US 206, CSX Bridge Replacement

Route: US 206

Section: CSX Bridge Replacement

DBNUM: 94059



County: Somerset

Municipalities: Montgomery Twp.

Sponsor: NJDOT

This project provides for the replacement of the existing 85-foot, single-span bridge with a new 138-foot, single-span structure. The improvements will include a realignment of US 206 to the west with a roadway section that will provide for one 12-foot travel lane, 10-foot shoulder, and sidewalk in each direction. A new "T" intersection with traffic signal will be constructed for the relocated intersection of US 206 and CR 601. The improvements will upgrade US 206 and the adjacent roadways to improve their operational characteristics and safety throughout the project limits. The existing bridge will be open to traffic until the construction of the new structure is completed. This project will be bicycle/pedestrian compatible with shoulders and sidewalks provided on both sides of the roadway as well as crosswalks.

This project is programmed in the following TIP:

MPO	Plan	Phase	Year	Fund Source	Cost (in millions)
NJTPA	FY2008-2011 Program	CON	2009	STATE	\$18.646
					Total: \$18.646

Note: see pages 7-8 for explanation of Phases; see page 9 for Fund Source definitions

CJTF - Project Status Report - Spring 2008
US 206, North of Cherry Hill Road, Drainage Improvements

Route: US 206

Section: North of Cherry Hill Road,
Drainage Improvements

DBNUM: 04318



County: Mercer

Municipalities: Princeton Twp.

Sponsor: NJDOT

Ponding and flooding have been reported in the parking lot and the front of Clifftown Center, a strip mall situated on the northbound side of US 206. It has been determined that the lack of inlets, a broken culvert and undersized drains in this vicinity caused the flooding. This project will provide for the replacement of the drainage system, construction of a drainage tie-in to this system from the low point in front of Clifftown Center. Two culverts will also be replaced.

This project is programmed in the following TIP:

MPO	Plan	Phase	Year	Fund Source	Cost (in millions)
DVRPC	FY2008-2011 Program	ROW	2008	STATE	\$0.5
DVRPC	FY2008-2011 Program	CON	2010	STATE	\$1.5
					Total: \$2

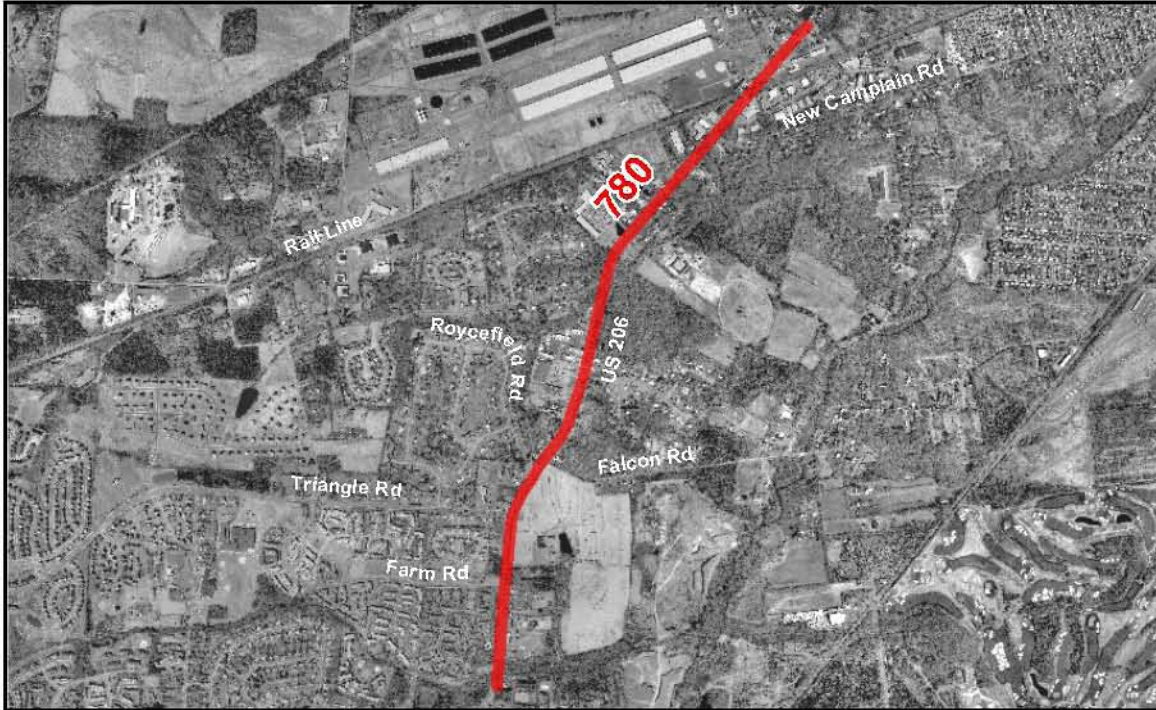
Note: see pages 7-8 for explanation of Phases; see page 9 for Fund Source definitions

CJTF - Project Status Report - Spring 2008
US 206, Old Somerville Road to Brown Avenue (15N)

Route: US 206

Section: Old Somerville Road
to Brown Avenue (15N)

DBNUM: 780



County: Somerset

Municipalities: Hillsborough Twp.

Sponsor: NJDOT

This project will provide for the widening of the highway to increase the number of travel lanes from two lanes to four lanes and will include shoulder widening, median barrier construction, and associated intersection improvements. This project will be bicycle/pedestrian compatible. This is a multi-year funded Transportation Trust Fund (TTF) project under the provisions of Section 13 of P.L. 1995, c.108. Total TTF funding needed for construction is anticipated to be \$94.791 million.

This project is programmed in the following TIP:

MPO	Plan	Phase	Year	Fund Source	Cost (in millions)
NJTPA	FY2008-2011 Program	DES	2008	NHS	\$2
NJTPA	FY2008-2011 Program	CON	2010	STATE	\$30
NJTPA	FY2008-2011 Program	CON	2011	STATE	\$35
NJTPA	FY2008-2011 Program	CON	2012	STATE	\$29.791
					Total: \$96.791

Note: see pages 7-8 for explanation of Phases; see page 9 for Fund Source definitions

CJTF - Project Status Report - Spring 2008
US 1, Middlesex County Corridor Study*

Route: US 1 **Section:** Middlesex County Corridor Study **DBNUM:** 93146

County: Middlesex **Municipalities:** Plainsboro Twp. **Sponsor:** NJDOT
South Brunswick Twp.
North Brunswick Twp.

A Smart Growth Study of this corridor is currently underway. Upon completion of this study, a concept development study will begin in order to identify future needs in this corridor.

Structure Numbers: 1201152, 1201153, 1201154, 1201155, 1201156, 1201160, 1201159, 1201157.

The following special Federal appropriations were allocated to this project: FY06 SAFETEA-LU, \$2,500,000 (available 20% per year); \$3,500,000 (available 20% per year) and \$800,000 (available 20% per year).

The project is programmed in the following TIP:

MPO	Plan	Phase	Year	Fund Source	Cost (in millions)
NJTPA	FY2008-2011 Program	CD	2008	HPP20	\$1
					Total: \$1

Note: see pages 7-8 for explanation of Phases; see page 9 for Fund Source definitions

**Note: Although this project is not in a final construction or design phase, it has been included with a description due to expressed interest.*

CJTF - Project Status Report - Spring 2008
Van Dyke Road and Greenwood Avenue Bridges over Trenton Branch

Route: N/A

Section: Van Dyke Road and
Greenwood Avenue
Bridges over Trenton Branch

DBNUM: 99315



County: Mercer

Municipalities: Hopewell Twp.

Sponsor: NJDOT

This bridge rehabilitation project will remove and replace the superstructure and maintain the existing cartway with minimum or no approach roadway improvements for both bridges. Repairs to the substructure will also be included. A temporary pedestrian structure will be provided at the Greenwood Avenue Bridge to provide pedestrian access during construction.

This project is programmed in the following TIP:

MPO	Plan	Phase	Year	Fund Source	Cost (in millions)
DVRPC	FY2008-2011 Program	CON	2008	STP-STU	\$3.893
					Total: \$3.893

Note: see pages 7-8 for explanation of Phases; see page 9 for Fund Source definitions

NJ Turnpike Authority Projects

TABLE OF CONTENTS

NJ Turnpike Widening	43
----------------------	----

Note: New Jersey Turnpike project descriptions were given by the New Jersey Turnpike Authority.

CJTF - Project Status Report - Spring 2008 NJ Turnpike Widening

Routes: NJTPK

Section: Interchange 6 to
Interchange 9

DBNUM: TPK0501



This proposed widening program will provide for the construction of approximately 25 miles of roadway widening and improvements to the New Jersey Turnpike from the vicinity of Interchange 6 in Mansfield Township, Burlington County (where the mainline roadway consists of 3 lanes in each direction) to the existing 10-lane dual-dual portion of the Turnpike at Interchange 8A in South Brunswick Township, Middlesex County. The proposed widening program will also entail the addition of a third lane to each of the existing outer roadways of the Turnpike for a distance of approximately 10 miles between Interchange 8A and Interchange 9 in East Brunswick, Middlesex County, and improvements to each of the interchanges within the project limits. When completed, the proposed widening will result in a 12-lane (6 lanes in each direction) dual-dual roadway from Interchange 6 to Interchange 9, capable of accommodating projected traffic needs through the year 2032.

Preliminary engineering and environmental studies to assess the feasibility of the proposed widening was initiated in the first quarter of 2005 and was completed in the first quarter of 2007. Final design was initiated in 2007 and is expected to take up to 3 years to complete. Construction is anticipated to begin in 2009 (pending environmental permitting and availability of funding) and be completed in 2013. (Source: NJ Turnpike Authority, 3/28/08)

Transit TIP Projects

TABLE OF CONTENTS

Section 5310 Program	47
Section 5311 Program	47
Small / Special Services Program	48
Study and Development	48
Transit Rail Initiatives	49
South Brunswick Transit System (Earmark)	50
Transit Signal Priority, Somerset/Middlesex	51
Transit Service Enhancement, Somerset/Middlesex	51

Transit projects advance differently than NJDOT projects; as a result, both capital and Study and Development-type transit initiatives are profiled here, in the Transit section of the report.

CJTF - Project Status Report - Spring 2008
Section 5310 Program

New Jersey Transit Project

DBNUM: T150

This program provides for the purchase of **small buses or van-type vehicles** for agencies that serve the elderly and persons with disabilities. Formerly known as the Section 16 Program.

This project is funded under the provisions of Section 13 of P.L. 1995, c.108. MATCH funds are provided from the State. Expenditures are for costs of projects in specific years only.

County: Various

Municipalities: Various

Sponsor: NJ Transit

CJTF - Project Status Report - Spring 2008
Section 5311 Program

New Jersey Transit Project

DBNUM: T151

This program provides funding for **rural public transportation programs**. MATCH funds are provided from NJ TRANSIT and local funds.

This project is funded under the provisions of Section 13 of P.L. 1995, c.108. Expenditures are for costs of projects in specific years only.

County: Various

Municipalities: Various

Sponsor: NJ Transit

CJTF - Project Status Report - Spring 2008
Small / Special Services Program

New Jersey Transit Project

DBNUM: T120

Funding will cover NJ TRANSIT efforts which initiate or promote transit solutions to reduce congestion, manage transportation demand and improve air quality. Included are State funds for the Vanpool Sponsorship Program, Transportation Management Association Program, and Federal funds for **East Windsor Community Shuttle operating support**. Funding is also provided for capital acquisition/operating expenses for the Community Shuttle Program, Bike/Transit facilitation, and other activities that improve air quality and help reduce congestion. This project is funded under the provisions of Section 13 of P.L. 1995, c.108.

Toll Credit will be used as the non-federal match. An explanation of toll credit can be found in the Introduction Section of the STIP. In addition, expenditures are for costs of projects in specific years only.

Prior Year Funding:

FY06 - \$180,000 Section 5310

FY06 - \$100,000 Section 5307

FY07 - \$65,000 Section 5310

FY07 - \$100,000 Section 5307

County: Various

Municipalities: Various

Sponsor: NJ Transit

CJTF - Project Status Report - Spring 2008
Study and Development

New Jersey Transit Project

DBNUM: T88

This element provides for system and infrastructure planning studies to ready projects for design, as well as demand forecasting and other related planning work. One of the initiatives being studied is the feasibility of a possible **Bus Rapid Transit (BRT) system on the Route 1 corridor in Mercer County**.

This project is funded under the provisions of Section 13 of P.L. 1995, c.108. Expenditures are for costs of projects in specific years only.

County: Various

Municipalities: Various

Sponsor: NJ Transit

CJTF - Project Status Report - Spring 2008 Transit Rail Initiatives

New Jersey Transit Project

DBNUM: T300



County: Various

Municipalities: Various

Sponsor: NJ Transit

This program provides funding for transit expansion projects, including new fixed guideway, new station construction and rolling stock acquisition. Also included are FTA new starts projects authorized under New Jersey Urban Core or SAFETEA-LU.

Potential projects in this category include (in no rank order): HBLR Extension to 8th Street Bayonne; Northern Branch DMU; HBLR Extension to Secaucus; HBLR Secaucus-Meadowlands Connector; Passaic-Bergen rail service on the NYS&W east of Hawthorne using Diesel Multiple Unit (DMU) passenger equipment; Restoration of commuter rail service on the NYS&W west of Hawthorne; Restoration of commuter rail service to Lackawanna Cutoff; Port Morris Improvements; Commuter Rail Spur to the Meadowlands Sports Complex; West Shore--Hoboken to West Haverstraw; NERL Elizabeth Segment from NJ TRANSIT'S Northeast Corridor Midtown Elizabeth Station to Newark Liberty International Airport via the Elizabeth Waterfront; **Restoration of commuter rail service on the West Trenton line; River LINE LRT Capitol Extension; Second Phase of River LINE LRT/PATCO Extension; Route 1 BRT, Second Phase of NERL (Newark Penn Station to Newark Liberty International Airport); MOM Commuter rail extension;** Extension of Cape May Seashore Line north to Hammonton (to Atlantic City Rail Line); Commuter Rail extension to Phillipsburg, improvements on the Atlantic City Rail Line, new Portal Bridge, **new rail station**

improvements such as Atlantic City Line/River LINE connection, River Line Cramer Station, Moynihan Station, Penn Station New York Platform extensions, Penn Station New York Central Concourse and Smart Card Technology Program along with other new system-wide, rail, bus, and light rail initiatives arising during the year. Funding is also provided to advance projects dependent on federal formula funds, federal earmarks, other non-federal (including private) funding, and/or state resources available beyond planned levels.

Toll Credit will be used as the non-federal match. An explanation of toll credit can be found in the Introduction Section of the STIP. In addition, expenditures are for costs of projects in specific years only.

This project is funded under the provisions of Section 13 of P.L. 1995, c.108.

County: Various	Municipalities: Various	Sponsor: NJ Transit
------------------------	--------------------------------	----------------------------

**CJTF - Project Status Report - Spring 2008
South Brunswick Transit System (Earmark)**

New Jersey Transit Project	DBNUM: T522
----------------------------	--------------------

Funding is provided for SAFETEA-LU earmarks for the South Brunswick Transit System.

This project is funded under the provisions of Section 13 of P.L. 1995, c.108.

County: Middlesex	Municipalities: South Brunswick Twp.	Sponsor: NJ Transit
--------------------------	---	----------------------------

CJTF - Project Status Report - Spring 2008
Transit Signal Priority, Somerset/Middlesex

Transit Project

DBNUM: 9169A

A Problem Statement has been received which indicates buses regularly experience long delays at signalized intersections within the study area. These delays reduce the ability of buses to maintain a regular schedule and also reduce the ability of Somerset County and NJ TRANSIT to devise route modifications to serve a larger area. The delays experienced by buses can be reduced by the use of a Transit Signal Priority system. This technology senses the approach of a bus at a signalized intersection, and either extends green time or reduces red time for that direction of traffic. The use of this system should be investigated for the following intersections: River Road at Plainfield Avenue, New Brunswick Road at Cedar Grove Lane, Davidson Avenue at Easton Avenue, Easton Avenue at Franklin Boulevard and Signalized intersections in the vicinity of the New Brunswick train station.

County: Middlesex
Somerset

Municipalities: Franklin Twp.
Piscataway Twp.

Sponsor: NJDOT

CJTF - Project Status Report - Spring 2008
Transit Service Enhancement, Somerset/Middlesex

Transit Project

DBNUM: 9169H

A Problem Statement has been received, indicating there are a limited number of transit services available in the I-287 interchange areas of Franklin Township and Piscataway Township and ridership is currently low. Existing services lack visibility and are not marketed well. Existing services operate with limited frequency and operating times are either inadequate or inconvenient to meet the travel needs of many potential users. In addition, there are few, if any, transit amenities such as bus stop signs and shelters located within the study area.

County: Middlesex
Somerset

Municipalities: Franklin Twp.
Piscataway Twp.
Bound Brook Borough

Sponsor: TBD

TIP - Potential Projects (Study and Development)

The Study and Development (S&D) process is how NJDOT performs the early phases of project development and assessment. See “NJDOT Project Development Process” at the beginning of this report for more information. Following is the list of such projects as of May 2008.

Table 10: NJDOT Study and Development Projects

Project Name	Pipeline Status	DBNUM
US 1, Bicycle/Pedestrian Improvements	FY 2005-2006 Study and Development Program	97025
NJ 29, Hopewell Township, Drainage Improvements	FY 2006-2010 Project Pool	05334
Millstone Valley Scenic Byway	FY 2007-2008 Study and Development Program	04334
NJ 29, Washington Crossing State Park, Scenic Byway Improvements	FY 2007-2008 Study and Development Program	00362L
NJ 33, US 1 to US 130 Corridor Study	FY 2007-2008 Study and Development Program	04302D
US 1 Business, Brunswick Circle	FY 2007-2008 Study and Development Program	04316A
I-287, Middlesex/Somerset, Raritan River Crossing Needs Analysis	FY 2007-2010 Concept Development	9169
CR 546, Washington Crossing-Pennington Rd over Woolsey's Brook	FY 2007-2008 Study and Development Program, Local Preliminary Design	D9907
CR 571, Princeton Hightstown Road Improvements	FY 2007-2008 Study and Development Program, Local Preliminary Design	D0701
I-295, Rising Sun Road to US 1, ITS Improvements	FY 2007-2008 Study and Development Program, Concept Development	06362
Orchard Road Connector	FY 2007-2008 Study and Development Program	06381
US 1, Mercer County Congestion Management & Concept Development Study	FY 2007-2008 Study and Development Program, Concept Development	01330
US 206, Cherry Valley Road Intersection Improvements	FY 2007-2008 Concept Development	01320
NJ 31, Ewingville/Upper Ferry Road to CR 518, TDD Project (3G)	FY 2007-2008 Study and Development Program, Feasibility Assessment	159
CR 546, Washington Crossing-Pennington Road Bridge over Conrail	FY 2007-2008 Study and Development Program, Local Preliminary Design	D9906
I-295, Northbound Approach to US 1 Exits, ITS Improvements	FY 2007-2008 Study and Development Program, Preliminary Design	06358

NJ 33, Washington Township Bypass	FY 2007-2008 Study and Development Program, Preliminary Design	99368A
US 1 Business, Brunswick Circle to Texas Avenue	FY 2007-2008 Study and Development Program, Preliminary Design	04316
US 1, Franklin Corner Road	FY 2007-2008 Feasibility Assessment, Concept Development	027
US 1, Southbound, Nassau Park Boulevard to I-95, Safety Improvements	FY 2007-2008 Study and Development Program, Preliminary Design	01330A
US 206, North of Quaker Road, Drainage Improvements	FY 2007-2008 Study and Development Program, Preliminary Design	04319
US 206, Stony Brook Bridges	FY 2007-2008 Study and Development Program, Preliminary Design	326
NJ 33/US 130, Washington Township Access Management Study	FY2000-01 Study and Development Program	99368
Rocky Brook Bikeway	FY2002-2003 Study and Development Program	X185C
US 206, Princeton, Stony Brook to Birch Avenue, Bicycle Improvements	FY2005-06 Study and Development Program	97027
I-95, Vicinity of NJ 29 to US 1, Resurfacing	Pipeline 3, Construction Awarded	03324
I-295, I-195 to US 1, Rehabilitation	Pipeline 3, Under Construction	03325
US 1, Shipetaukin Creek, Bridge Deck Replacement	Pipeline 3, Under Construction	04384
NJ 29, Scenic Byway Guiderail Replacement, Scenic Drive to Frenchtown	Pipeline 3 but no funding listed	00362C1
CR 518, D&R Canal Bridge	Problem Statement	97096
CR 533, Mercer County Signal Project	Problem Statement	D0702
I-95, Federal City Road	Problem Statement	9363
I-287, ITS Data Collection System	Problem Statement	9169D
I-287, Wayfinding Signage	Problem Statement	9169C
NJ 27, Cozzens Lane	Problem Statement	9298
NJ 27, Huron Road/Bennetts Lane	Problem Statement	9299
NJ 27, Pavement—South Brunswick to New Brunswick	Problem Statement	98462
NJ 31, Hopewell	Problem Statement	94084
NJ 31, Pennington Circle to US 202	Problem Statement	165
NJ 31, Stony Brook Bridge	Problem Statement	98360
NJ 33/US 130, Assunpink Creek	Problem Statement	00322
Raritan River Bicycle/Pedestrian Bridge	Problem Statement	9169E
Sidewalk Installation, Franklin/Piscataway	Problem Statement	9169G
US 1, D&R Canal	Problem Statement	94054

US 130, I-195 to NJ 32, ITS Improvements	Problem Statement	06364
US 130, Cedar Brook, Drainage Improvements	Problem Statement	93237
US 130, Rocky Brook	Problem Statement	99394
US 206, Mansgrove Road to Cherry Valley Road	Problem Statement	06397
US 206, Mercer County, Independence Avenue to Mountain Avenue	Problem Statement	96051
US 206, Princeton Twp., Mountain Avenue to Cherry Valley Road	Problem Statement	96052
US 206/US 1 Business, Shabakunk Creek Bridge	Problem Statement	95109
High Point to Cape May Designated Bicycle Touring Route (Central)	Problem Statement	02358
Hillsborough Road Bridge	Problem Statement	00330
Homestead Road Bridge	Problem Statement	00331
I-195, Mercer/Monmouth/ Ocean, Richardson Road to CR 537	Problem Statement	97014
I-195, New Jersey Turnpike Interchange Improvements	Problem Statement	97014A
Lanning Boulevard, Mercer County	Problem Statement	02324
NJ 29, Ewing Township to Lambertville, rehabilitation	Problem Statement	03333
NJ 33, Big Bear Brook, Drainage Improvements	Problem Statement	98410
NJ 133, Wyckoffs Mill Road	Problem Statement	99324
US 1, Lawrence Township, Noise Barriers	Problem Statement	98375
US 130, Corridor No. 2, Crosswicks Creek to Route 1	Problem Statement	9161
Princeton-Hightstown Road, CR 571	Problem Statement (awaiting lead agency decision)	L086
US 130, Intersection Improvements at NJ 32	Problem Statement, Tier 2	05321
US 206, Ewing Street, Safety Improvements	Problem Statement, Tier 2	04356

Source: DVRPC New Jersey TIP for FYs 2008-2010

**This list is for general, initial information only. It is based on DVRPC's review of the TIP databases and brief additional research. Please contact NJDOT, DVRPC, or NJTPA for more information.*

Projects Funded by Counties

The counties that participate in the Forum are invited to provide information on transportation projects that may be of interest to others in Central Jersey. This is a relatively new and developing part of the Planned Projects Status Report.

Middlesex County

A list of major road projects was provided by Middlesex County's Planning Department. The following table summarizes these significant improvement projects in the vicinity of US 1. Many of these projects are directly related to major land use projects, such as the proposed North Brunswick Transit Village (Johnson & Johnson site), South Brunswick Science Center, and UMCP Relocation. *For more information on Land Use projects, please see page 63.*

Table 11: Middlesex County Projects

Project Name	Issues Addressed	Status	DBNUM
US 1 and Finnegans Lane Grade Separation and Finnegans Lane Extension to US 130	New connector between US 1 and US 130. Existing traffic congestion hotspot. Anticipate increased traffic as a result of a Transit Village at the Johnson & Johnson site in N. Brunswick.	To Be Determined	07337
US 1, Aaron Road Operational Improvements	Lack of shoulder. Intersection improvements.	Problem Statement	07317
US 1 and Raymond Road Intersection	Flooding issues. Turning movement problems causing backups onto US 1. Raymond Road and Ridge Road are priority sites for US 1 intersection improvements. Ridge Road intersection will be impacted by the proposed South Brunswick Science Center.	Problem Statement	93253
US 1 and Deans Lane	See pg. 29 for full description. Intersection improvements to follow paving work.	CON	07312
US 1 and New Road	<p>This group of projects represents the first phase of the larger US 1 Widening project. These intersections include grade separations and improvements to accommodate traffic resulting from major new development projects in the area.</p> <p>A consultant has completed conceptual plans for some intersections. US 1 and New Road is the top priority intersection of this group, and design is scheduled to begin in 2008</p>		
US 1 and Wynwood / Whispering Woods Blvd.			
US 1 and Sand Hills Road / Major Road			
US 1 and Henderson Road			
US 1 and Blackhorse Lane			

US 1 Corridor BRT Improvements	Greater New Brunswick BRT study completed by consultants focused on Plainsboro, South Brunswick and Mercer Counties. Middlesex County and others are advocating inclusion of the broader US 1 Corridor.	Study and Development	T88
--------------------------------------	---	-----------------------	-----

Source: Email and phone correspondence with Middlesex County Planning Department

Somerset County

Somerset County did not have additional major capital projects to report at this time.

Central Jersey Transportation Forum Planned Projects

PROJECTS*

- Bridge Replacement / Rehabilitation
- Intersection Improvement
- Pedestrian Bridge
- ▤ Bicycle / Pedestrian Improvement
- xxxxxx Drainage Improvement
- ▬ EIS
- ▬ New Roadway
- www Noise Barrier
- ▬ Rail Initiative
- ▬ Roadway Improvement
- ▬ Study / Analysis
- Improvement Area

RAIL

- Station

- + + + Commuter + + + Freight

NATURAL FEATURES

- ~ River or Stream ■ Lake

BOUNDARIES

- ▬ State ▬ CJTF Member Municipality
- ▬ County ▬ Other Municipality

* For more information, see the Planned Projects Status Report for regular updates on land use projects in the vicinity of Route 1 and transportation projects funded by the federal government and other bodies. Also visit: www.dvrpc.org and www.njtpa.org

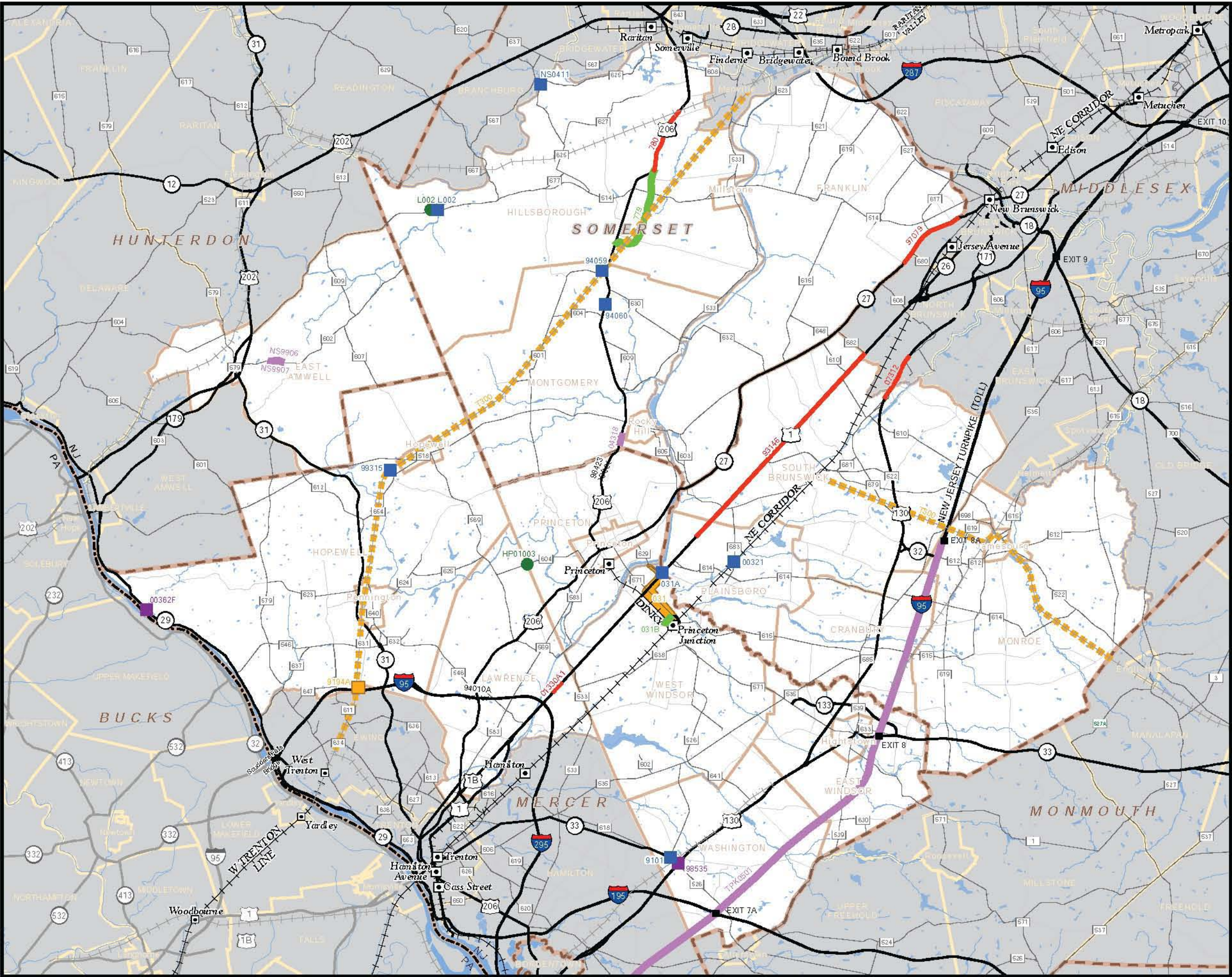
SOURCES: DVRPC, NJDOT, NJDEP, PennDOT
This map was developed using New Jersey Department of Environmental Protection Geographic Information System digital data, but this secondary product has not been verified by NJDEP and is not state-authorized.



0 1.25 2.5 5
Miles



DELAWARE VALLEY
REGIONAL PLANNING COMMISSION
MAY 2008



Index of Projects by Database Number (DBNUM)

This is an index of the projects with full page descriptions in the Planned Project Status Report. These are projects far along in development.

Table 12: Index of Projects

DBNUM	Name	Page
	Highway TIP Projects	
00321	CR 683 Schalks Station Road Bridge	18
00362F	NJ 29 Moores Station Canal Crossing	23
01330A1	US 1 Southbound, Quaker Bridge Mall Overpass	29
031	US 1 Penns Neck Improvements (CR 571)	26
031A	US 1 Bridge over Millstone River, Bridge Replacement	28
031B	Vaughn Drive Connector	14
04318	US 206 North of Cherry Hill Road, Drainage Improvements	37
07312	US 130 Southbound, North of Deans Road to Vicinity of Lawrence Brook, Resurfacing	31
146	NJ 27 Six Mile Run Bridge	21
779	US 206 Bypass, Belle Mead-Griggstown Road to Old Somerville Road	35
780	US 206 Old Somerville Road to Brown Avenue	38
9101	NJ 33 Conrail Bridge Removal	24
9194A	I-95 Reed Road Wetland Mitigation Site	20
93146	US 1 Middlesex County Corridor Study	39
94010A	I-95 Noise Barriers, Lawrence Township	19
94059	US 206 CSX Bridge Replacement	36
94060	US 206 Crusers Brook Bridge	34
97079	NJ 27 Renaissance 2000, Bennetts Lane to Somerset Street	22
98423	US 206 Arreton Road Drainage Improvements	33
98535	US 130 Pedestrian Bridge, Washington Township	30
99315	Van Dyke Road and Greenwood Avenue Bridges over Trenton Branch	40
HP01010	Princeton Township Roadway Improvements	25
L002	CR 514 Amwell Road Bridge over Neshanic River	13
NS0411	CR 606 Studdiford Drive Bridge over South Branch of Raritan River, Replacement	17
NS9906	CR 602 Wertsville Road Bridge over Tributary of Back Brook	16
NS9907	CR 602 Wertsville Road Bridge over Back Brook	15
	New Jersey Turnpike Authority	
TPK0501	New Jersey Turnpike Widening	43
	Transit TIP Projects	
T88	Study and Development	48
T120	Small / Special Services Program	48
T150	Section 5310 Program	47
T151	Section 5311 Program	47
T300	Transit Rail Initiatives	49
T522	South Brunswick Transit System (Earmark)	50

9169A	Transit Signal Priority, Somerset/Middlesex	51
9169H	Transit Service Enhancement, Somerset/Middlesex	51

Source: DVRPC New Jersey TIP for FYs 2008-2010

Major Land Use Projects in the Route 1 Corridor

Overview of Projects

Land use decisions are rarely made in a vacuum. Linking land use and transportation projects together can help facilitate and inform decisions at both ends. This section provides information about land use projects proposed or recently completed by public or private entities in the vicinity of US 1. The projects are arranged by municipality in the descriptive text that follows.

An earlier version of this information was distributed in the Summer, 2007 Planned Projects Status Report at the July, 20th 2007 Central Jersey Transportation Forum meeting. It covered the period from August of 2006 through June 2007. The summary included here covers activity from June 2007 to May 2008. Information was gathered from local newspapers, including the *Home News Tribune*, the *Lawrence Ledger*, the *Princeton Packet*, the *North Brunswick/ South Brunswick Sentinel*, and the *Times of Trenton*, as well as various websites. Full references are available upon request. The draft summaries were then circulated to municipalities and counties for refinements and additions. This information will also be posted on the DVRPC web page for the Forum.

(<http://www.dvrpc.org/transportation/longrange/cjtf/plannedprojects.htm>)

The abbreviations after each item identify the date and newspaper or source where the summary came from. Following is the key:

Newspaper and Source Key

BCN: Bridgewater Courier News

DP: The Daily Princetonian

DRG: D&R Greenway (www.drgreenway.org)

HNT: Home News Tribune of Middlesex County

HT: Hopewell Township (www.hopewelltpw.org)

LL: The Lawrence Ledger

LT: Lawrence Township (www.lawrencetwp.com)

MT: Montgomery Township (www.montgomery.nj.us)

NJHT: New Jersey Historic Trust

PBJ: Princeton Business Journal

PI: Philadelphia Inquirer

PP: The Princeton Packet

PR: The Plainsboro Reporter (www.plainsboronj.com)

ST: North Brunswick/South Brunswick Sentinel

TT: The Times of Trenton

WWPN: West Windsor Plainsboro News

Land Use and Transportation Projects on US 1

Hillsborough

Transload Facility

- The Veterans Administration (VA) Supply Depot in Hillsborough Township is one of two key redevelopment sites in Somerset County. Combined with the Defense Logistics Agency property and the former US Postal Service property recently acquired by Somerset County, an area of 257 acres with existing rail and highway access is available for redevelopment as an intermodal freight village. Considerations will be given to low-impact development and green building practices. A collaborative stakeholder process will be initiated to discuss freight options. (6/07 – *Advancing Inter-Modal Freight Opportunities Within Central Somerset County*, Somerset County Planning Board)

Hopewell Township

St. Michaels Orphanage Tract

- D&R Greenway Land Trust was able to raise nearly \$3.3 million in time to fulfill their contractual obligation with the Diocese of Trenton and purchase the 337 acre St. Michaels Orphanage tract for permanent preservation as open space. The tract is not yet open to the public for hiking and recreation, pending time to finalize the sale and create trails. (3/13/07, 4/16/07 – DRG: Press Releases)

Hopewell and Lawrence

Capital Health System Relocation

- Site plan applications have received preliminary approval. Final approval and the start of construction are anticipated for spring or early summer 2008. (Accessed 4/29/08 – HT)
- A traffic study presented by CHS officials stated that the \$400 million, 656,000-square-foot hospital and 6-story medical office building would generate 5,000 less trips than if the property were fully built out under the office/retail/hotel use plan approved for Merrill Lynch, who is selling the property to CHS. The 165-acre CHS site is located off the Scotch Road exit of I-95. Merrill Lynch still has 65 acres available, which could be developed with another 40,000 square feet of office space. (9/19/07 – TT)
- CHS is also negotiating with the Hopewell Valley YMCA to purchase 13 acres of CHS property on West Franklin Avenue in Pennington to build a recreation center. (7/3/07 – www.capitalhealth.org/news)

Lawrence

Heritage Village

- Construction has begun on the senior housing development at the site of the former Trent Motel, with work scheduled to finish by year's end. Lawrence Township is also pursuing a boulevard plan for the Brunswick Pike Redevelopment Area. (Accessed 4/4/08 – LT)
- The mixed-use 3-story building at the Brunswick Pike site on the corner of Cherry Tree Lane will contain up to 5 retail stores occupying 7,500 square

feet, and 68 affordable rental apartments for seniors 55 and up with incomes between \$29,000 and \$34,000. (10/07 – mercerrealtors.com)

Quaker Bridge Mall Expansion

- Simon Property Group, owners of the Quaker Bridge Mall on Route 1 in Lawrence, is pursuing a large-scale renovation expected to be complete by 2011. Of the current 1,000,000 square feet, 150,000 square feet will be demolished, followed by the addition of 760,000 square feet of new retail space. Multi-deck parking garages with space for 72,000 parking stalls will be constructed. Simon Property participated in a charrette process with NJDOT, NJ Transit, other state agencies, and area municipalities to explore mitigating the expansion's impact on area roads. (4/1/08 – PBJ)
- Letters of agreement have been signed with Neiman Marcus and Nordstrom to add the department stores to the mall's anchor list. (Accessed 4/4/08 – rejournal.com)

Wal-Mart

- Less than 6 months after gaining township approval to build a 143,233 square foot store on 23.5 acres at 1060-1100 Spruce St., Wal-Mart officials decided to abandon the plan. The company cited a shift in growth strategy. Citizen concern over traffic issues and threats to the nearby Shabakunk Creek dominated the discussions leading up to Wal-Mart's decision to pull out of the project. (compiled from 2/14/08 – LL, 8/16/07 – LL, 6/21/08 – TT)

Montgomery

North Princeton Development Center (NPDC) – Skillman Village

- Montgomery Township acquired a 256 acre parcel known as the North Princeton Developmental Center (NPDC), located at Skillman Road and Burnt Hill Road. A Vision Plan has been created, environmental cleanups are underway, and a Redevelopment Plan is being drafted. According to the Township, optimal land use will be determined by developer interest, market conditions, the Township's Vision Plan, the capacity of the sewage treatment plant, and the Township's need to recover costs. In a meeting on April 17th, 2008, extensive interviews of 5 potential redevelopers were conducted. (Accessed 4/29/08 – MT, 4/17/08 Press Release – MT)
- A Garden State Historic Preservation Trust Fund grant of \$46,500 has been secured to fund studies on the preservation and sustainable use of the Maplewood and Smalley Theater buildings on the property. (Accessed 4/29/08 – NJHT)

Montgomery Promenade

- Plans were given final approval for construction scheduled to begin in March, 2008 for the shopping center, located at the southwest corner of the intersection of US 206 and CR 518 near the Princeton Airport. A Stop & Shop and PNC Bank are among the confirmed tenants. (12/14/07 – PP)

Plainsboro

Princeton Forrestal Center

1. Forrestal Village

- Ruth's Chris Steakhouse began construction in December, 2007. The restaurant is set to open in summer, 2008. Calico Corners is expected to open a 5,500 square foot store in spring, 2008. BLC spa has leased a 5,200 square foot corner location on Main Street. (1/4/08 – www.njand.com)

2. College Park

- The 11 building office center has surpassed 95% occupancy. (12/12/07 – www.bnet.com)

University Medical Center at Princeton (UMCP) Relocation

- Architectural renderings were unveiled for the 50 acre site, part of a 158 acre health campus in Plainsboro with access to Route 1, Scudders Mill Road, and Plainsboro Road. New facilities will be state of the art, incorporating energy and resource conservation innovations from the Green Building Council's LEED (Leadership in Energy and Environmental Design) Rating System, possibly including an on-site cogeneration plant for combined heat and power production. A private donation of \$25 million was recently made. (3/25/08 – PP)
- Plainsboro Township's planning board voted in September, 2007 to designate the FMC Corporation's 160 acre property as an area in need of redevelopment. The township planning board drafted a redevelopment plan including a new 960,000 square foot hospital to be built in 2 phases, 240,000 square feet of new medical office buildings to be built in 2 phases, a 120,000 square foot skilled nursing facility, and 270,000 square feet of general office and research space. Adjacent to the hospital site, a retirement community of 440 units of age-restricted housing is proposed. A 32-acre park along the Millstone River would be created and become Township property. The redevelopment plan was adopted in January, 2008. Princeton HealthCare System officially acquired the site from the FMC Corp. in March, 2008. All 19 buildings on the FMC site are scheduled for demolition. Project completion is expected in 2010. The site plan is currently under review by Plainsboro Township. (compiled from 4/15/08 – PP, Fall 2007 – PR, 9/18/07 – PP)

Plainsboro Village Center

- The Village Center, located off of Scudders Mill Road and still under construction, has won a 2008 Smart Growth award in the "New Town Center Development" category. The Village Green, which includes a water fountain and central public space, is scheduled to open by July, 2008. Three structures remain to be built, which will add additional retail, office, and housing to the center. Groundbreaking on the remaining buildings should begin by the end of 2008. (4/29/08 – PP)

Plainsboro Library

- The Township Committee approved a bond ordinance in August, 2007 for \$15.55 million. The project went to bid in September, and was awarded to H&S Mechanical and Construction of Elizabeth, NJ. A fund drive was conducted to raise private donations for the down payment on the bonds. (9/7/07 – WWPB)
- The 3-story, 34,000 square foot building will be located on the village green in the heart of the Village Center. Groundbreaking took place on December 10, 2007. The township anticipates opening the library in 2009. (11/16/07 – WWPB, 12/14/07 – WWPB)

Princeton

University Place/Alexander Street Project

- Princeton University has proposed an arts neighborhood plan that would include moving the DINKY station 460 feet to the south. The university wants to use the current location, which is close to the McCarter and Berlind theatres, to expand its performing arts program. (7/31/07 – PP)
- A number of meetings have been held to address community reservations about the planned move. The university's plan also proposes a new parking garage south of Western Way. A lack of sufficient traffic studies has been cited as a concern of the current plans. Traffic impact studies are underway. (2/8/08 – PP; 5/14/08 – Princeton Township)
- The University is also planning over 2,000,000 square feet of new construction on Princeton's 380-acre main campus by 2016. (2/27/08 – TT)

The plan can be viewed online at www.princeton.edu/campusplan

University Medical Center at Princeton: Existing Site

- There are no new updates at this time.
- Princeton Borough Council approved three hospital zoning ordinances permitting up to 280 residential units with the possibility that some will be age-restricted. Retail or office space was capped at 6% of the development. (10/27/06 – PP)
- Princeton Borough Council introduced 3 new ordinances relating to the UMCP Existing Site for future development:
 1. Change 5.6 acres from strictly medical to mixed residential, retail, and office.
 2. Require design standards including traffic, open space, and aesthetics.
 3. Create new residential zone on the hospital's surface parking lot, 20% of which would be affordable housing. (9/6/06 – PP)

Princeton Township

Hilltop Park Area

- J.R. Hillier has proposed building age-restricted units with a smaller footprint than previously approved plans, and incorporating green roofs and other mitigation techniques for the environmentally sensitive site on Bunn Drive. Hillier has requested permission to lower the age

requirements for the homes from 62 to 55, which would require a change in the 20 acre site's zoning. (11/13/07 – DP)

Princeton Borough

Hulfish North

- Construction has begun on the 100 unit housing development, but so far only a small percentage of units have been built. The residential units will be spread though 7 buildings on 4.4 acres along Paul Robeson Place, between Chambers Street and Witherspoon Street. Most of the units will be multi-family homes, with 20 townhouses and several apartments also included. (4/29/08 – PP)

West Windsor

Princeton Junction Train Station Redevelopment Area

- A meeting in April held by InterCap included plans for 7 parking garage structures plus surface lots providing 8,930 parking spaces, nearly 703,000 square feet of office space, 58,200 square feet of retail and commercial development, an 11,800 square foot daycare center, a 4,000 square foot EMS facility, and 142 affordable housing units. Analysis of traffic circulation and fiscal impacts related to the project are the next priorities for planning. (4/7/08 – TT, 4/8/08 – PP)
- Township Council reached consensus on several key elements of the redevelopment plan. Desired elements include: mixed-use development with residences on top along Route 571 on the east side and over the Washington Road bridge to the west side of the railroad tracks; Vaughn Drive as a connector between Alexander and Washington roads; leaving the woods behind the Route 571 Acme intact; rethinking a connection of a block of Station Drive and Route 571 and rethinking connecting Hillier's "Windsor Walk" grand boulevard on the west side with crossing needs. Elements rejected included the Hillier "bowl" concept of a pedestrian-bicycle tunnel to run under the railroad tracks and moving the Schlumberger firm's Wallace Road offices. (4/2/08 – TT, 4/4/08 – PP)
- A March, 2008 letter from NJDOT suggested that state funding for the Vaughn Drive Connector road project will not be made available until West Windsor develops a mixed-use redevelopment plan for the site. (3/11/08 – PP)
- Steve Goldin, CEO of InterCap Holdings, which owns 25 acres in the redevelopment area, presented views of a mixed-use, pedestrian-friendly Route 571 corridor at a redevelopment meeting attended by 300 townspeople. The plans focused on a redesign of the Windsor Plaza shopping center with multiple floors, mixed uses, and rear parking areas with small service roads constructed as connections to Route 571. (2/26/08 – PP)
- Township Council formed a Redevelopment Finance Committee that is researching mechanisms to fund redevelopment. A paper has been provided on the West Windsor Township website. (http://www.westwindsornj.org/redev_guest_editorial.pdf - 2/25/08)
- Progress on the 350-acre redevelopment area has been hindered by a lack of consensus regarding development plans and turnover within the

Township Council. It was agreed in a September, 2007 memorandum that an examination of the road system and infrastructure in the area would be an appropriate place for the Planning Board to begin its work. However, the Planning Board subsequently turned over redevelopment planning duties to the Township Council. (compiled from 8/28/07 – PP, 9/28/07 – PP, 1/29/08 – PP)

- Schlumberger Technology Corp. indicated it might consider relocating to accommodate redevelopment plans, including a possible park at the site of Schlumberger's current building. (7/31/07 – PP)

West Windsor Hotel Complex

- The township approved plans for safety improvements required by the planning commission to an access road for the planned 6-story, 160-room hotel off of Meadow Road and Route 1. The safety features will require permission for an extension of the easement previously granted by neighboring Meadow Lane Apartments. The Hilton hotel chain is interested in the proposed complex, despite years of delay. The township is prepared to use eminent domain to secure the right of way easement if necessary. (8/17/07 – PP)

MarketFair Shopping Center Expansion

- Renovation plans could be announced in May for the 240,000 square foot shopping center located on Route 1. Any major renovations will require Planning Board approval. (3/21/08 – TT, 3/25/08 – PP)

Getty Gas Station Site

- Final site plans were presented to the West Windsor Zoning Board and public for a retail center that would replace the abandoned gas station at the corner of Route 571 and Cranbury Road. Potential tenants include a Rite Aid pharmacy and Starbucks coffee shop. Site plans were crafted to be consistent with overall planning for development in the Route 571 corridor at the township's request, including the use of brick and heights of 35 feet or less. Parking will be in the rear of the retail area. (9/11/07 – PP)

Sarnoff Corporation

- There are no new updates at this time.
- New development would occur over a 20-year span. The initial phase would add 450,000 square feet of office space and 900,000 square feet would be added in the second phase. At build-out, the 332.5 acre site would contain 18 buildings and 8,783 parking spaces. Council members approved a resolution to support Sarnoff closing Fisher Place (which would become a cul-de-sac) and creating a new road with a jug handle turn. (10/27/06 – PP)

Wyeth Tract

- There are no new updates at this time.
- At Route 1 and Quakerbridge Road, 653 acres of high-end residential and retail will be developed by General Growth Properties of Chicago, the current owner. The high-end retail considered for the site may go to

Quaker Bridge Mall instead. FAR at the site is 21%, reduced from 30%.
(7/6/06 – TT)

Projects Nearby But Outside of Forum Area

Hamilton

Hamilton Station (Transit Oriented Development)

- Developer Jack Morris initiated talks to renegotiate for fewer than the 680 residential units, including townhouses, condominiums, and apartments originally approved for construction on the southbound side of the train tracks. The train station area is still declared a redevelopment zone, but the transit village plan has been put on hold, pending an economic impact study, traffic study, and public discussion of proposals. (4/2/08 – TT)
- Plans were suspended for the transit village planned for the area surrounding the NJ Transit station on Sloan Avenue, pending further study. (4/2/08 – TT)
- Mayor John Bencivengo was invited to a three-day workshop in May held by urban design experts that will focus on transit-oriented developments. (4/29/08 – TT)

North Brunswick

Johnson & Johnson Site

- The 212-acre former laboratory campus is now owned by North Brunswick TOD Associates. On December 17, 2007, North Brunswick Township Council unanimously passed a resolution supporting a new rail station and regional multimodal transportation hub based on Smart Growth principles, “provided existing roadway infrastructure and traffic bottlenecks are sufficiently expanded and improved.” (1/8/08 – www.ourtowncenter.info)
- Plans include road infrastructure projects at Route 1 and Finnegan’s Lane, Route 1 and Cozzens Lane, Route 130 and Adams Lane, and Route 130 and Renaissance Boulevard East, among others. Next steps include hiring a consultant to evaluate the studies already conducted, and advancing NJ Transit and NJDOT work regarding the transit station and road work. (2/21/08 – ST)
- Studies have been conducted to add a stop on NJ Transit’s Northeast Corridor line at the site. The proposed transit village would include a train station, bus depot, community center, library, teen center, residential units, hotel, restaurants, and shops. Building proposals include 13 mixed-use, retail-office-loft residential buildings, 22 residential loft buildings, 18 duplex loft buildings, and at least 550,000 square feet of retail and commercial space. (1/14/08 – HNT)

More information can be found at www.ourtowncenter.info

Other Forum Municipalities (no major projects reported at this time)

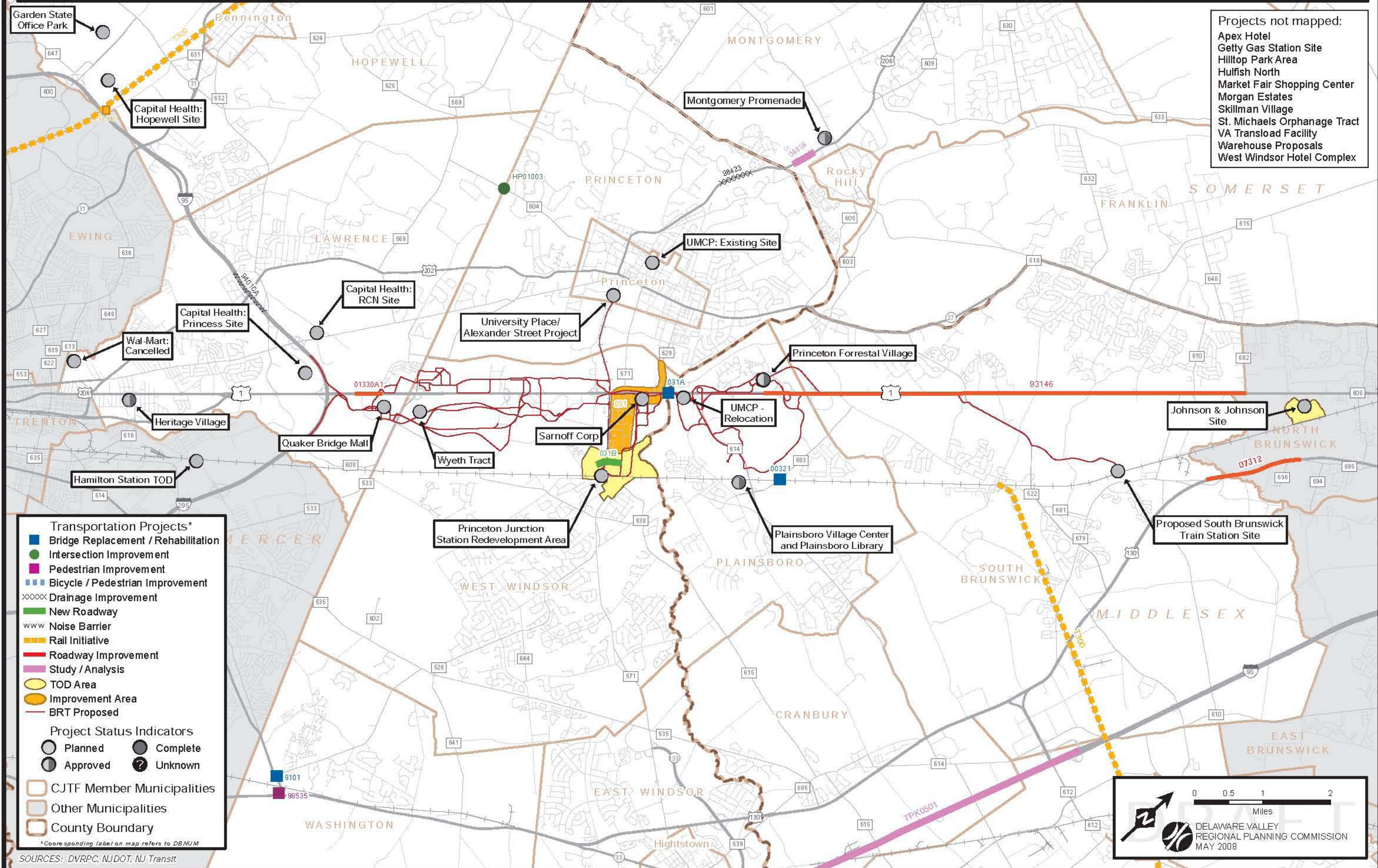
Cranbury Township
East Amwell Township
East Windsor Township
Franklin Township
Hightstown Borough
Hopewell Borough
Jamesburg Borough
Millstone Borough
Monroe Township
Pennington Borough
Rocky Hill Borough
South Brunswick Township
Washington Township

Relevant Studies and Policy Documents

NJDOT Route 1 Regional Growth Strategy (underway)
NJDOT Long Range Plan
DVRPC Long Range Plan
NJTPA Long Range Plan
Advancing Inter-Modal Freight Opportunities Within Central Somerset County
State Plan/Cross Acceptance
NJDOT Exit 8A Study
CR 571 Corridor Study
NJDOT Route 206 Visioning Study
Princeton Campus Plan

CENTRAL JERSEY TRANSPORTATION FORUM

May 2008
Land Use & Transportation Projects on US 1 (DRAFT)



Insert [spreadsheet summary of land use]

Overview of Public and Private Land Use Projects on US 1

This list covers transportation and major land use projects that will affect transportation.

See attached pages for more detail.

Table 13: Land Use (or Mostly Land Use) Projects

<u>Name</u>	<u>Township</u>	<u>Type</u>	<u>Land Use</u>	<u>Size</u>	<u>Cost / Investment</u>	<u>Ownership</u>	<u>Status</u>	<u>Year Complete</u>
Hamilton Station Transit Oriented Development	Hamilton	Transit Oriented Development	Mixed Use	300 residential units 125,000 sq. ft. retail, 200,000 sq. ft. office 200 room hotel	Unknown	Unknown	Repealed Pending Study	Unknown
Capital Health Systems Relocation: Hopewell Site	Hopewell Township	Medical	Community Service	165 acres 656,000 sq ft hospital 6-story medical office building	\$400 million	Private	Planning	Unknown
Garden State Office Park	Hopewell Township	Office Development	Mixed (Commercial)	440 Acre Site: 1,000,000 office on 200 acres 60 acres of Single Family units on 6 acre lots 170 acres of preserved open space	Unknown	Private	Unknown	Unknown
Capital Health Systems: Princess Rd Site	Lawrence	Medical	Community Service	32 acres	Unknown	Private	Planning	Unknown
Capital Health Systems: RCN Site	Lawrence	Medical	Community Service	134.5 acres	Unknown	Private	Planning	Unknown
Heritage Village	Lawrence	Mixed Use Development	Mixed (Residential)	79,103 sq ft on 2.38 acres 3 story building 68 apt's & 5 retail spaces (7,500 sq ft)	\$10 million	Private	Approved	Late 2008 (expected date)
Quaker Bridge Mall Expansion	Lawrence	Retail Expansion	Commercial	Final site will be 1.75 million sq ft, a 59% increase Over 100 new units Multi-deck parking with 72,000 new parking stalls	Unknown	Private	Planning	2011 (expected date)
Wal-Mart	Lawrence	Retail	Commercial	23.5 acres 143,233 sq ft 725 parking spaces	Unknown	Private	Canceled	Unknown
Skillman Village	Montgomery	Mixed Use Development	Mixed Use	256 acres mix of office, retail, housing and civic uses	Purchased site for \$5.95 million	Township	Planning	Unknown
Montgomery Promenade Shopping Center	Montgomery	Retail	Commercial	325,000 sq. ft. 60 acres	Unknown	Private	Approved	2008 (expected date)
Johnson & Johnson site	North Brunswick	Transit Oriented Development	Office Mixed Use	212 acres 53 buildings for retail, office, civic, residential, transit between 2,000 and 5,000 housing units 550,000 sq ft retail and commercial	\$100 million	Unknown	Planning	Unknown
New Jersey Technology Center - Phase II	North Brunswick	Research Facility	Office	Unknown	Unknown	Unknown	Unknown	Unknown
Plainsboro Village Center	Plainsboro	Mixed Use Development	Mixed (Commercial & Civic)	30 residential units 37,500 sq ft of office space New Library	\$16 million for library	Unknown	Approved	2008 (expected date)
Princeton Forrestal	Plainsboro	Mixed Use Development	Commercial	45 acre site 882,000 sq ft of office, retail 294 room hotel	Unknown	Unknown	Approved	Unknown
UMCP: Relocation	Plainsboro	Medical	Community Service	160 acres 360,000 sq ft medical facilities 270,000 sq ft office and research space 440 units age-restricted housing 32-acre park	\$350 million	Private	Planning	2010 (expected date)
UMCP: Existing Site	Princeton Borough	Mixed Use Development	Mixed Use	12 acres Up to 280 residential units Retail/Office capped at 6%	Unknown	Unknown	Planning	Unknown

<u>Name</u>	<u>Township</u>	<u>Type</u>	<u>Land Use</u>	<u>Size</u>	<u>Cost / Investment</u>	<u>Ownership</u>	<u>Status</u>	<u>Year Complete</u>
University Place / Alexander Street	Princeton Borough	Mixed Use Development	Mixed	Plan may include University Center for the Creative and Performing Arts, Retail, DINKY & NJ Transit facilities	Unknown	Unknown	Planning	Unknown
Hilltop Park Area	Princeton Township	Age Restricted Housing	Residential	20 acres 20 affordable units, 78 market rate	Unknown	Unknown	Planning	Unknown
Hulfish North	Princeton Borough	Single Family Housing	Residential	4.4 acres 100 Housing Units Mostly multi-family homes; 20 townhouses & several apts.	Unknown	Unknown	Approved	Unknown
Apex Hotel	South Brunswick	Hotel	Commercial	25,300 sq ft 116 units 7.200 sq ft restaurant 262 parking spaces	Unknown	Private	Approved	Unknown
Warehouse Proposals	South Brunswick	Warehouses	Industrial	7 separate proposals	Unknown	Private	Planning	Unknown
Princeton Junction Train Station Redevelopment Area	West Windsor	Transit Oriented Development	Mixed Use	703,000 sq ft office space 58,200 sq ft retail and commercial 11,800 sq ft daycare center; 4,000 sq ft EMS facility 250-1000 housing units, incl. 142 affordable units 8,930 parking spaces - 7 parking structures plus surface lots	Unknown	Unknown	Planning	Unknown
Wyeth Tract	West Windsor	unknown	unknown	653 acres	\$160 million	Private	Planning	2027 (expected date)
Sarnoff Corp.	West Windsor	Office Development	Commercial	332 acres 18 buildings, 1.35 million sq. ft. office at build out	Unknown	Unknown	Planning	Unknown

Source: See pages 63-70

Central Jersey Transportation Forum Planned Projects Status Report

Publication No.: 08093

Date Published: June, 2008

Keywords: Central Jersey Transportation Forum, Transportation Improvement Programs, TIP, DVRPC, NJTPA, road improvements, transit, bridge, land use

Geographic Area Covered: Central New Jersey: 21 municipalities in the vicinity of Route 1 in Mercer, Middlesex, Somerset, and Hunterdon counties

Abstract:

The *Planned Projects Status Report* has provided information on transportation projects in central New Jersey for over six years. The report covers projects listed in Transportation Improvement Programs (TIPs) for the Delaware Valley Regional Planning Commission (DVRPC) and the North Jersey Transportation Planning Authority (NJTPA). It also covers other regionally important transportation projects regardless of funding. Starting in 2006, major land development projects in the vicinity of Route 1 have been included to help with coordination of transportation and land use planning.

Full information and maps are provided for twenty-seven projects in the NJDOT Capital Program. An overview map of these Forum-area projects is provided, as well as a map of major land use projects. The front section of the report analyzes what the full set of projects means in terms of the Forum's goals.

Bridge improvements are the most common project type in the area, accounting for about one-third of central New Jersey's TIP projects. All together, the TIP projects represent approval to invest approximately \$612 million dollars over fiscal years 2008-2011. The current edition of the *Planned Projects Status Report* also compares the present TIP to the draft next TIP, as far as it was known at the time of publication.

Delaware Valley Regional Planning Commission, 8th Floor
190 North Independence Mall West
Philadelphia, PA 19107-1520

Telephone: 215-592-1800
Fax: 215-592-9125
Internet: www.dvrpc.org

Staff contact: Zoe Neaderland, AICP
Direct phone: 215-592-2839
E-mail: zneaderland@dvrpc.org

**NOW
INCLUDING
MAJOR
LAND USE
PROJECTS!**

**CENTRAL JERSEY
TRANSPORTATION
FORUM**

**PLANNED PROJECTS
STATUS REPORT**

SPRING 2008



**Delaware Valley
Regional Planning
Commission**