



UNIVERSITY CITY SCIENCE CENTER

50 Years at the Intersection of
Innovation & Economic Development



Celebrating 50 Years of Innovation in 2013



Developing Communities & Making Connections

- A private, non-profit, technology-based economic development organization
- Campus includes 15 buildings on 17 acres
- Innovative programs to support startups
- Develop communities and spark connections to increase innovation, company formation and job creation



The Science Center transcends government and geographic boundaries



An Independent Nonprofit Owned by 31 Shareholders



The American College
 Bryn Mawr College
 Burlington County College
 The Children's Hospital of Philadelphia
 Delaware State University
 Drexel University
 East Stroudsburg University
 Haverford College
 Lafayette College
 Lehigh University
 Lincoln University
 Mercy Health System
 NUS America (National University of Singapore)
 The Penjerdel Council
 Pennsylvania Hospital
 Philadelphia College of Osteopathic Medicine
 Philadelphia University
 The Presbyterian Foundation for Philadelphia
 Rowan University
 Rutgers, The State University of New Jersey
 Salus University (former Pennsylvania College of Optometry)
 Swarthmore College
 Temple University
 Temple University School of Podiatric Medicine
 Thomas Jefferson University
 University of the Arts
 University of the Sciences in Philadelphia
 University of Delaware
 University of Pennsylvania
 Villanova University
 Widener University



Science Center: By The Numbers

50
YEARS

31

SHAREHOLDERS

8,000
PEOPLE WORK ON
OUR CAMPUS

350
GRADUATE
COMPANIES

15,000
DIRECT JOBS

\$9B
ANNUAL
ECONOMIC
IMPACT



Avid – A Science Center Success Story

- Moved into the Science Center's Port business incubator in 2005 with one employee
- By 2009, Avid had 37 employees and outgrew its space
- Moved into dedicated space in this building
- Acquired by Eli Lilly in Fall 2010 for up to \$800 million



Successful Alumni Deliver Economic Value



Port Incubator

- 35,000 square feet of incubation space
- Flexible and affordable leasing space
- 30 startups
- Significant tax advantages
- Since 2006 Port residents have collectively raised \$80 million+ in private capital and \$12 million+ in government funding that directly supported product development.



Global Soft Landing

- Introduced in 2006
- Helps international companies establish a foothold in local life sciences and IT markets
- Strategically located between NYC and Washington, DC
- Companies from Belgium, China, France, Japan, Singapore, Russia, Sweden, UK
- National Business Incubation Association (NBIA) Soft Landings International Incubator Designation



An Innovation Intermediary

The Science Center:

- matches technology with suitable investment-worthy entrepreneurs
- lowers the barriers to their involvement and success
- maximizes the value of early-stage technology generated by research institutions



The Science Center transcends government and geographic boundaries



Quorum: The Entrepreneurs' Clubhouse

Quorum is designed to strengthen the region's culture of technology commercialization by creating a magnet for entrepreneurs and innovators to convene, interact, network and exchange ideas.



This is Quorum: Innovation Has Its Place

Quorum: By the Numbers

17

MONTHS

10,000

PEOPLE

225

EVENTS

31

STRATEGIC
PARTNERS

31

SPONSORS

3

NEW PROGRAMS

COUNTLESS CONNECTIONS MADE

 **Quorum**



Key Elements of the QED Program

- Funding for translational life science research
- Projects with commercially relevant milestones
- Market-driven project selection
- Business advice
- Guidance to exit

Initiated by \$1 million of Science Center funding

QED BY THE NUMBERS

21

PARTICIPATING
RESEARCH
INSTITUTIONS

226
SCIENTISTS

90
BUSINESS
ADVISORS

47

SELECTION
TEAM
MEMBERS

283
PROPOSALS

12

PROJECTS
SUPPORTED

\$1.9

MILLION IN
FUNDING
RECEIVED

5

PROJECTS
LICENSED

\$9

MILLION IN
FOLLOW-ON
FUNDING

Phase 1 Ventures

- A partnership approach to starting new companies
- Management expertise for inventors
- Leverages SBIR/STTR funding + seed investment
- Test feasibility of high-potential, early-stage technologies



Turning STEM Into STEAM: Breadboard

- Science, Technology, Engineering, **Art** and Math
- Recipient of **Business & Arts Partnership Award** by the Arts & Business Council of Greater Philadelphia



Campus Master Plan



The Power of Regional Partnerships



Shared mission of tech-based economic development



Greater Philadelphia Economic Development Framework

2012 ANNUAL REVIEW AND UPDATE

Presentation to the Regional Community
and Economic Development Forum (RCEDF)
October 23, 2012

Greater Philadelphia Economic Development Framework

- Created to satisfy EDA requirements for a regional comprehensive economic development strategy (CEDS).
 - Approved by the EDA as the Greater Philadelphia region's CEDS on September 30, 2009
- Co-authored by DVRPC, Select Greater Philadelphia, and Ben Franklin Technology Partners.
- Reviewed and updated annually.
- Major review required every five years.

Purpose of a Regional CEDS

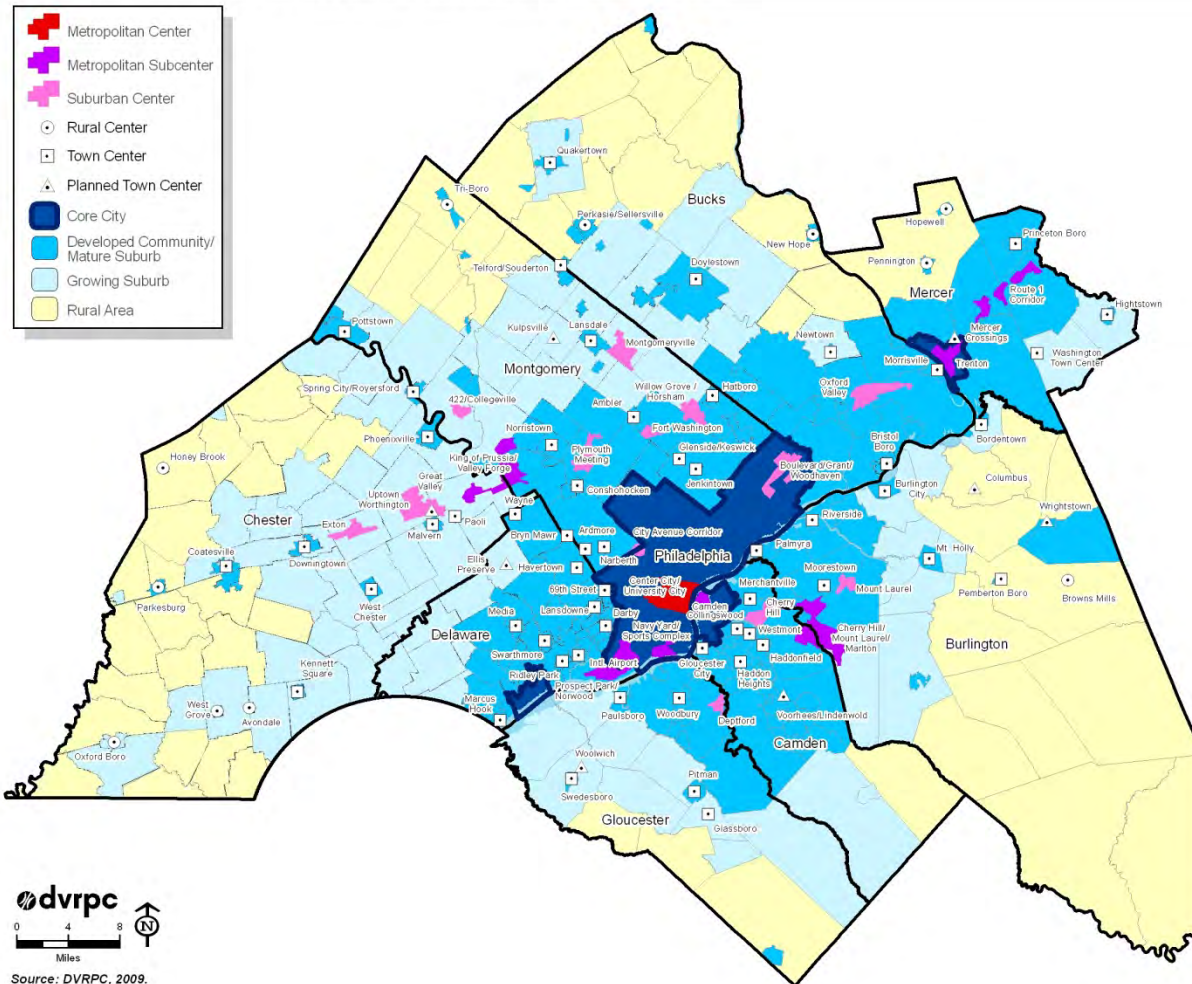
- Prerequisite for applying for funds under EDA public works, economic adjustment, and most planning programs.
- Identifies regional challenges and opportunities.
- Integrates economic development with land use and transportation planning.
- Integrates human and physical capital planning.
- Establishes regional goals and objectives.
- Leverages EDA funding to advance regional goals.

Annual CEDS Review

- Review goals and objectives and revise as appropriate.
- Gauge progress by evaluating performance measures.
- Review and update the list of key regional economic development projects.

Focus growth in centers.

DELAWARE VALLEY PLANNING AREAS AND CENTERS

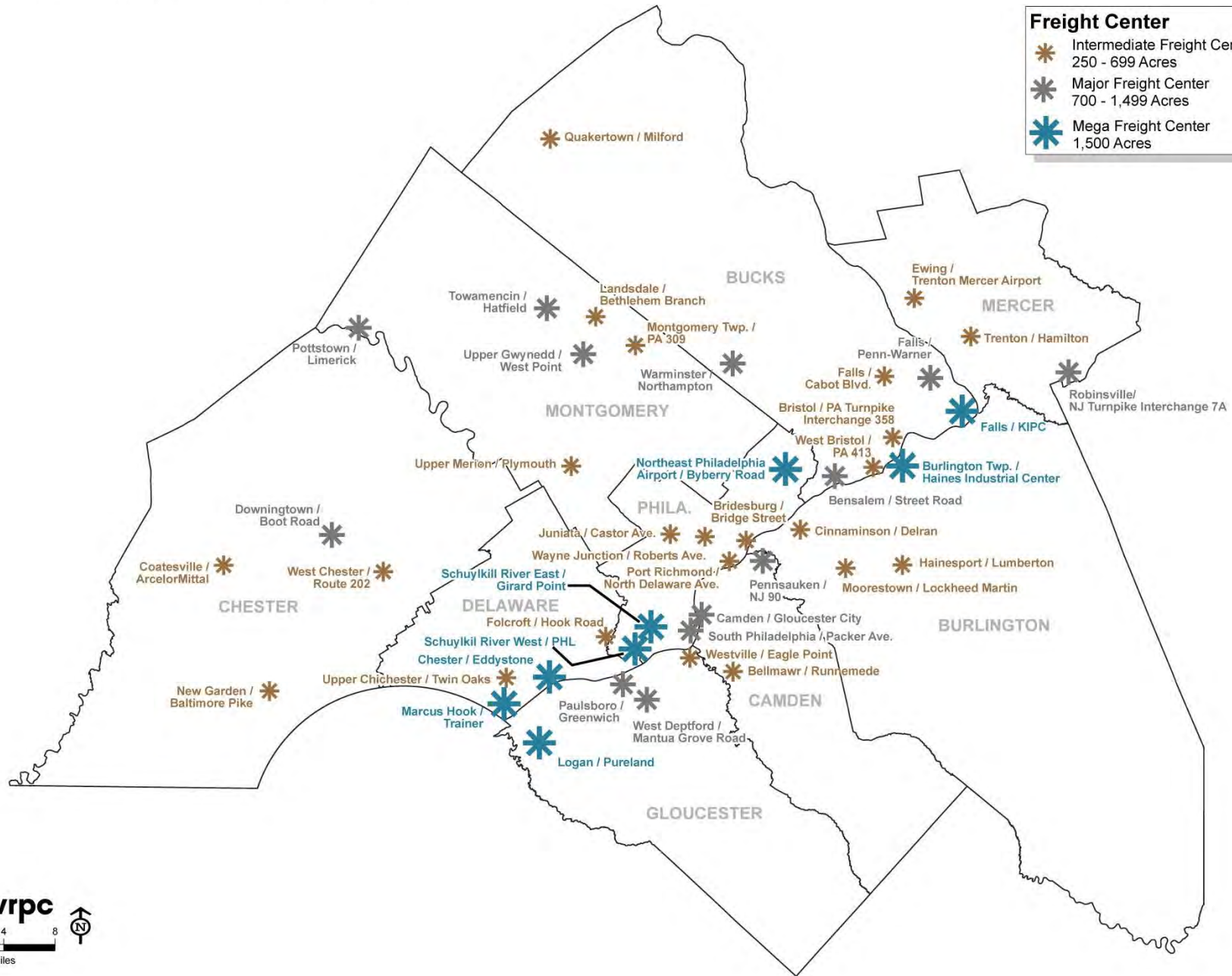


dvrpc
 0 4 8 Miles
 Source: DVRPC, 2009.

DELAWARE VALLEY FREIGHT CENTERS

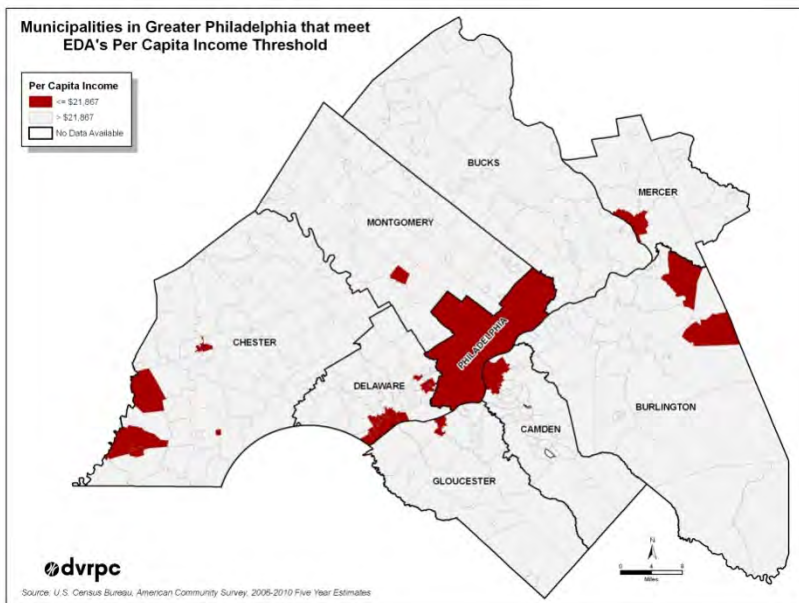
Freight Center

-  Intermediate Freight Center
250 - 699 Acres
-  Major Freight Center
700 - 1,499 Acres
-  Mega Freight Center
1,500 Acres

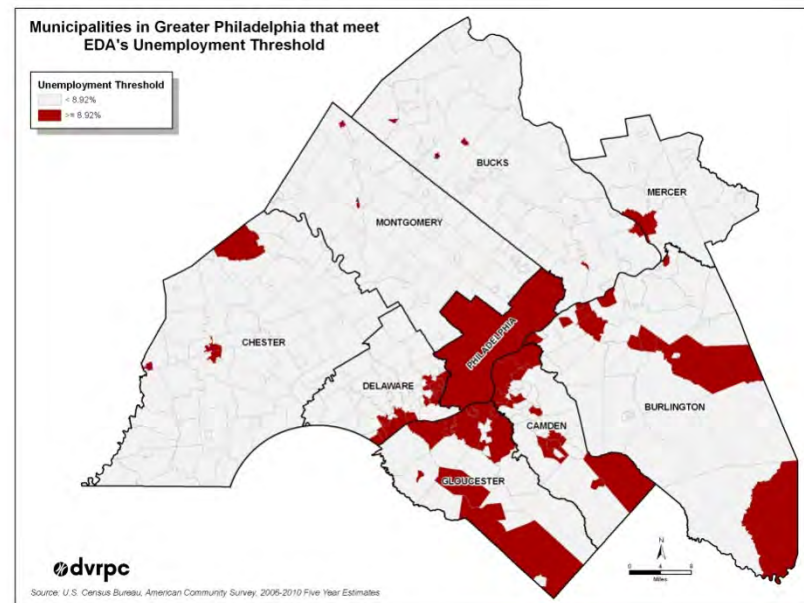


Create jobs in distressed areas and for populations most in need.

Per Capita Income (80 percent or less than the national PCI)

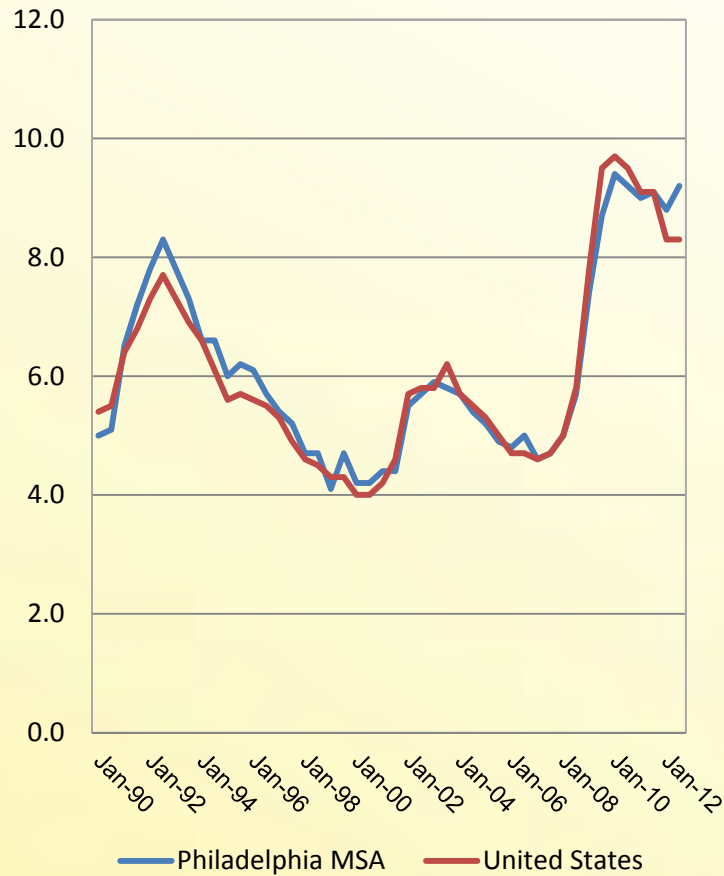


Unemployment (at least one percent greater than national rate)

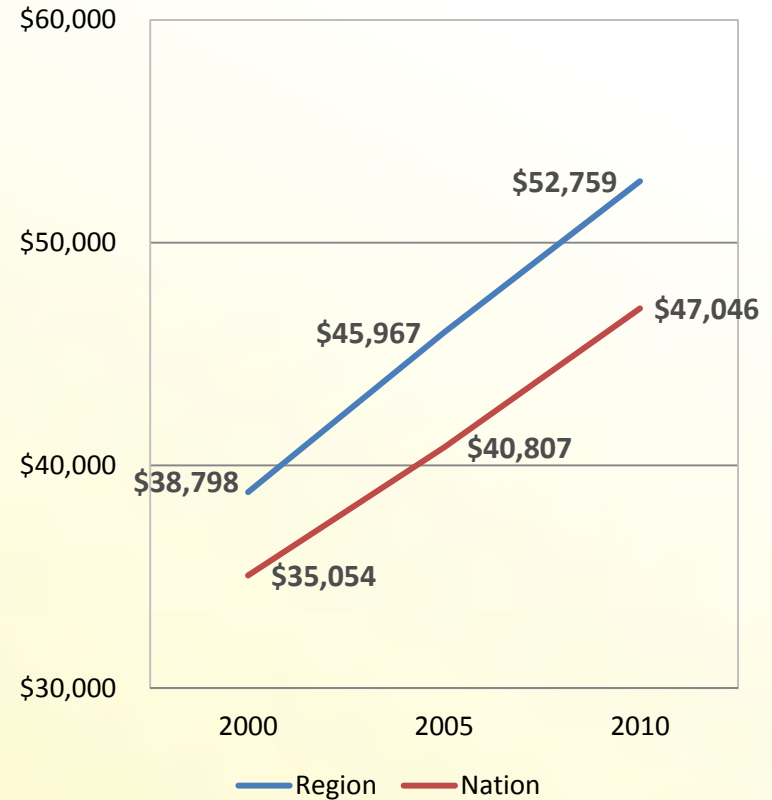


Create jobs that match workforce supply.

Unemployment



Average Wage per Job



Support and promote key economic sectors.

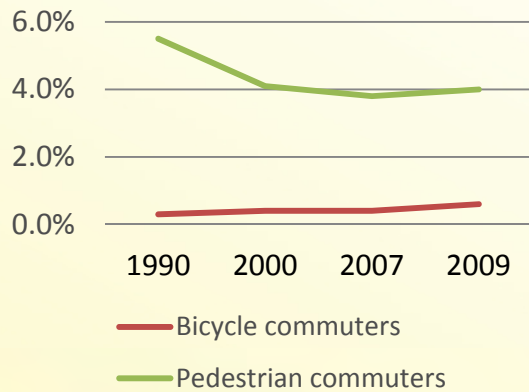
- Life sciences
- Tourism
- Health care
- Higher education
- Finance
- Creative industries
- Information technology
- Alternative energy
- Chemicals
- Specialty manufacturing

Percent Change by Sector, 2000-2010

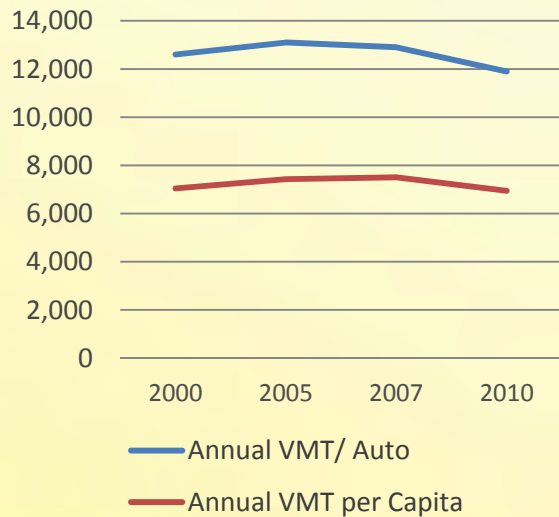
Sector	Establishments	Employment	Gross Sales
Agriculture, forestry, fishing, and hunting	-21%	-18%	18%
Mining and utilities	-23%	-17%	21%
Construction and manufacturing	-26%	-32%	6%
Wholesale and retail trade	-12%	-8%	38%
Transportation and warehousing	-8%	-4%	26%
Information	5%	-26%	43%
Finance, insurance, and real estate	11%	-7%	44%
Professional, scientific, and technical services	10%	7%	61%
Management of companies and enterprises	-32%	52%	167%
Waste management and remediation services	-7%	-10%	49%
Educational services	30%	21%	74%
Health care and social assistance	19%	21%	85%
Arts, entertainment, and recreation	24%	25%	58%
Accommodation and food services	16%	10%	43%
Other services (except public administration)	-1%	9%	57%
Federal, state, and local government	-3%	5%	36%
Total	-2%	-2%	39%

Reduce greenhouse gas emissions.

Percent Share of Bicycle and Pedestrian Commuters



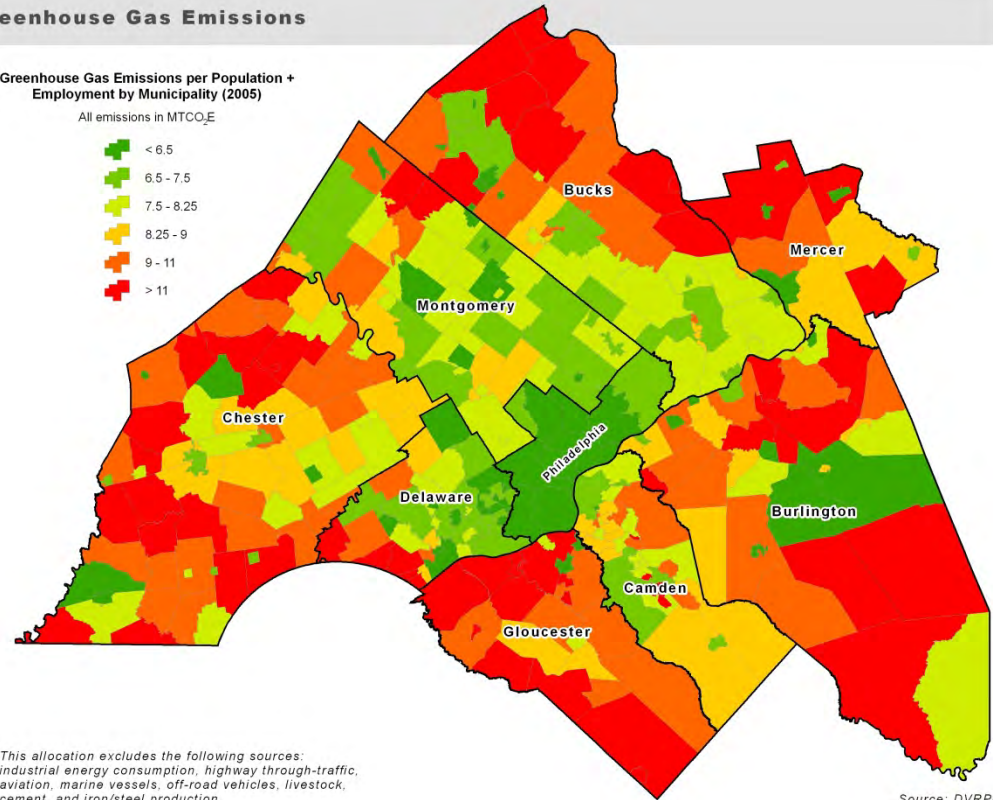
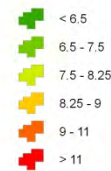
Annual Vehicle Miles Traveled



Greenhouse Gas Emissions

Greenhouse Gas Emissions per Population + Employment by Municipality (2005)

All emissions in MTCO₂e



This allocation excludes the following sources: industrial energy consumption, highway through-traffic, aviation, marine vessels, off-road vehicles, livestock, cement, and iron/steel production

Source: DVRPC

Enhance the climate for business growth.

- Welcome new businesses and expansions.
- Promote an attractive tax environment.
- Increase efficiencies in government decision-making.
- Foster regional collaboration.
- Improve the region's image.
- Engage business leaders.
- Promote and support entrepreneurship.

Invest in public infrastructure.

- Promote intraregional and interregional mobility.
- Support strategic investments in:
 - Transit
 - Rail
 - Ports
 - Airports
 - Utilities
 - Highways
 - Public streetscapes
- Support green technologies and sustainability.

Invest in public infrastructure.

Annual Unlinked Transit Passenger Trips (in millions)

Year	SEPTA	NJ Transit	PATCO	Pottstown Area Rapid Transit	Regional Total
2000	317.3	22.8	10.6	0.3	351
2005	334.5	23.5	9.4	0.3	367.7
2010	346.9	26.8	10.1	0.2	384.1
Percent Change 2000-2010	9%	18%	-5%	-9%	9%

Annual Tons of Air Cargo Passing through Philadelphia International Airport

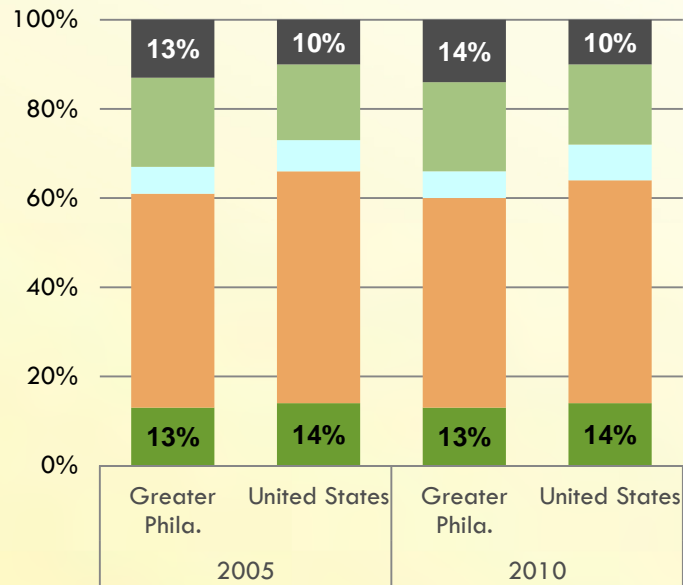
Year	Tons of Air Cargo
2005	582,010
2006	566,761
2007	580,057
2008	531,251
2009	457,113
2010	440,975
2011	432,641

Cargo Entering Delaware River Ports

Year	Metric Tonnage	Change from previous year	Twenty-foot Equivalent Units	Change from previous year
2005	69,518,905	---	491,940	---
2006	66,583,918	-4%	508,691	3%
2007	74,178,495	11%	562,465	11%
2008	66,002,973	-11%	550,741	-2%
2009	62,241,146	-6%	434,435	-21%
2010	60,632,056	-3%	495,845	14%
2011	54,568,851	-10%	520,638	5%

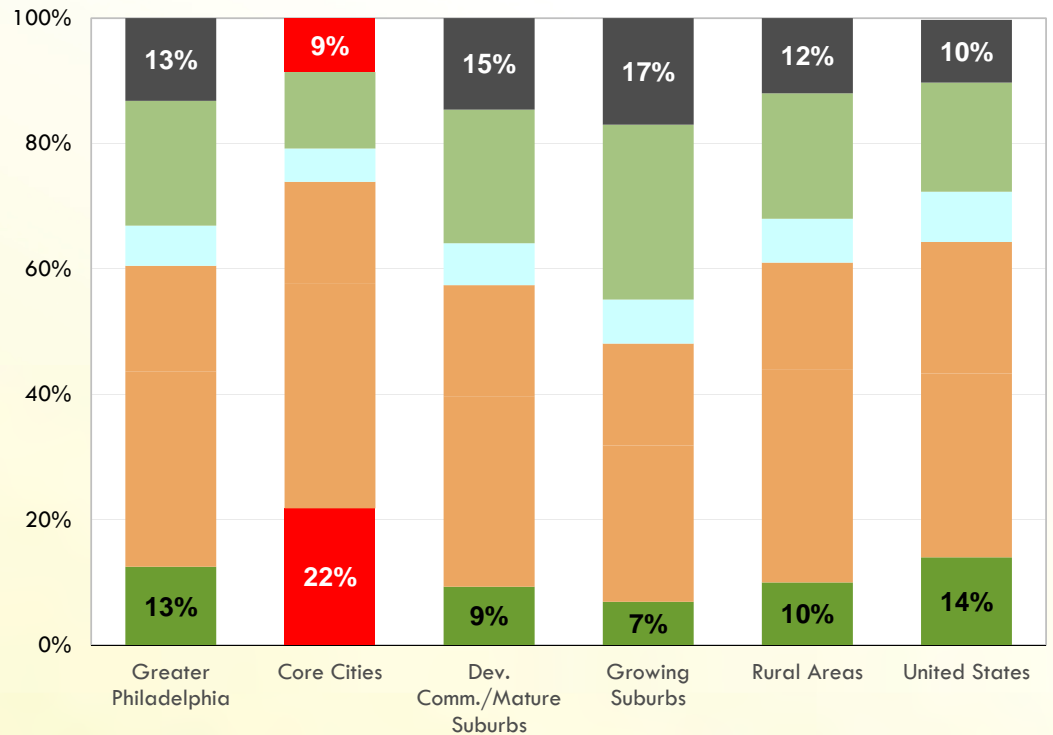
Foster a high-quality, productive workforce.

**Educational Attainment
Regional versus National**



- Graduate / Professional Degree
- Bachelors' Degree
- Associates' Degree
- High School Diploma or Equivalency
- Did not complete High School

**Educational Attainment by
Connections Planning Area**



- Did Not Complete High School
- High School Diploma or Equivalency
- Associates' Degree
- Bachelors' Degree
- Graduate or Professional Degree

Expand our connections to the global economy.

- Promote international trade.
- Continue to attract foreign investment.
- Expand capacity and improve performance at Philadelphia International Airport.
- Enhance utilization of the ports and leverage the region's multimodal transportation infrastructure.

Key Projects List

- Projects must be listed in the regional CEDS to be eligible for EDA funding.
- List is updated annually or through the CEDS amendment process.
- Not fiscally constrained: total estimated cost is over \$4.2 billion.
- Being on the list does not guarantee EDA funding!

Key Projects List

- Project types include:
 - Planning
 - Research
 - Job training
 - Workforce development
 - Redevelopment
 - Adaptive Re-use
 - Site acquisition
 - Construction
 - Infrastructure investment
- Geographies range from region-wide activities to site-specific projects



Thank You

For more information, please contact:
Mary E. Bell, Mgr., Dem. and Economic Analysis
Delaware Valley Regional Planning Commission
215-238-2841 | mbell@dvrpc.org
www.dvrpc.org



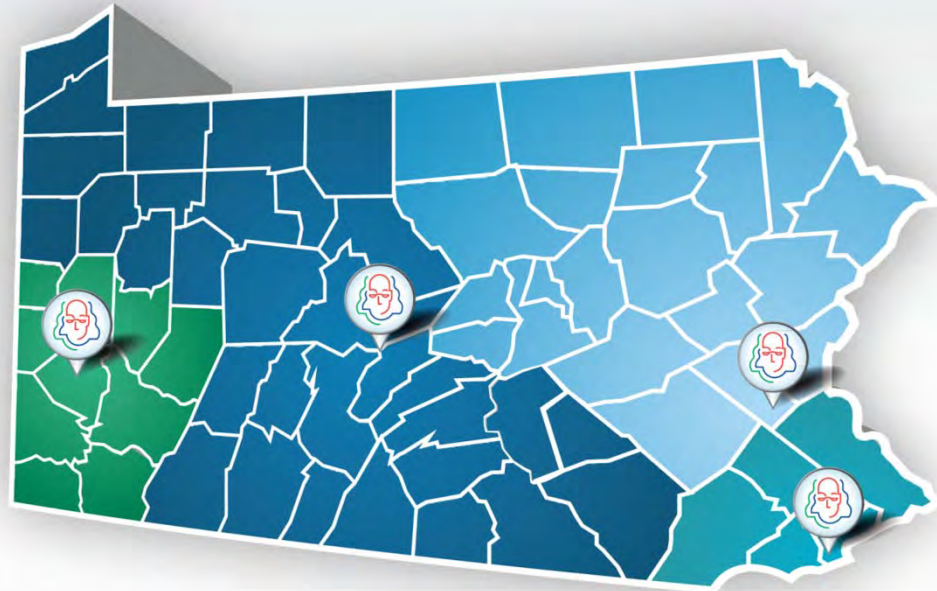
Ben Franklin
Technology Partners
Southeastern Pennsylvania



October 23, 2012

Since 1982

Pennsylvania's
Partners to Drive
Technology
Based Growth



Mission

"...invest in the transformation of the Pennsylvania economy through *technology, innovation, & strategic partnerships* that foster a favorable business environment for high-growth companies."

Recognized Leadership...for Pennsylvania



**Ben Franklin
Technology Partners**
Southeastern Pennsylvania

BFTP



Presidential Commendation



Gubernatorial Commendation



PA Senate Resolution



Technology-Led Economic
Development Award



Excellence In Economic
Development Award

BFTP/SEP



The Nanotechnology Institute
Honorable Mention for Excellence
in Economic Development Award



Technology Commercialization
Group finalist, Excellence
in Economic Development Award



RoseAnn B. Rosenthal, Temple
League of Entrepreneurial
Women Hall of Fame



Award of Recognition
& 20 years of Innovation Award



Website Awarded Silver
at Addy Awards



EASTERN TECHNOLOGY COUNCIL

Enterpriser Award, Eastern
Technology Council Enterprise
Awards



RoseAnn B. Rosenthal awarded an
Honorary PhD in Humane Letters
from Philadelphia University



RoseAnn B. Rosenthal appointed
to National Advisory Council on
Innovation & Entrepreneurship



RoseAnn B. Rosenthal, Blair Thompson
Lifetime Venture Award



Terry Hicks, Minority Business Leader Award



Local Venture Impact Award,
Life Sciences Awards



RoseAnn B. Rosenthal,
Founders Award



RoseAnn B. Rosenthal, Champion of
Small Business Award by the National
Coalition for Capital, 2009



Innovation Excellence Award



20 Years of Success Award



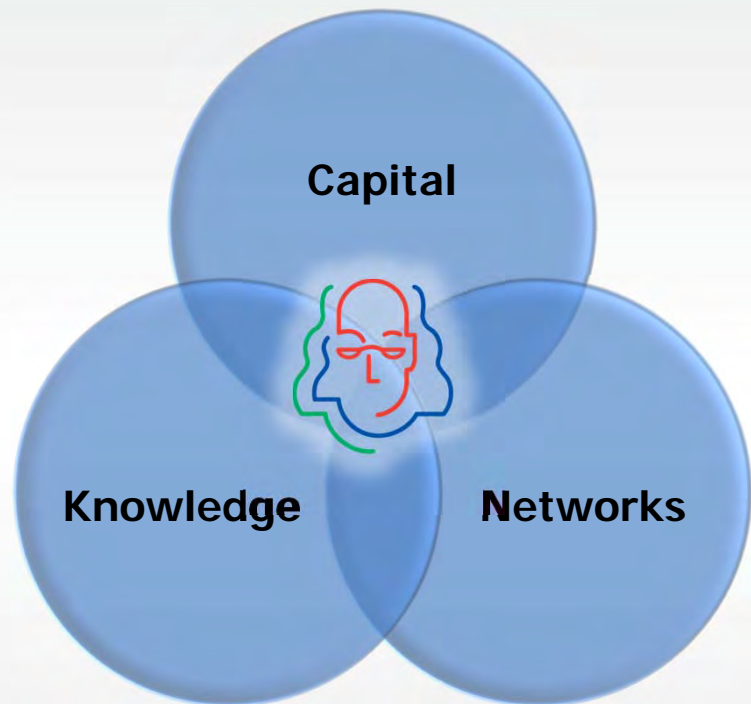
Microlending Minority Advocate of the Year



Case Study for Regional Development

What We Do

Seed, Link & Leverage Innovation Assets



=

New Companies
New Products
Jobs
Wealth

Innovation Integrator

BFTP Statewide 2002-2006*

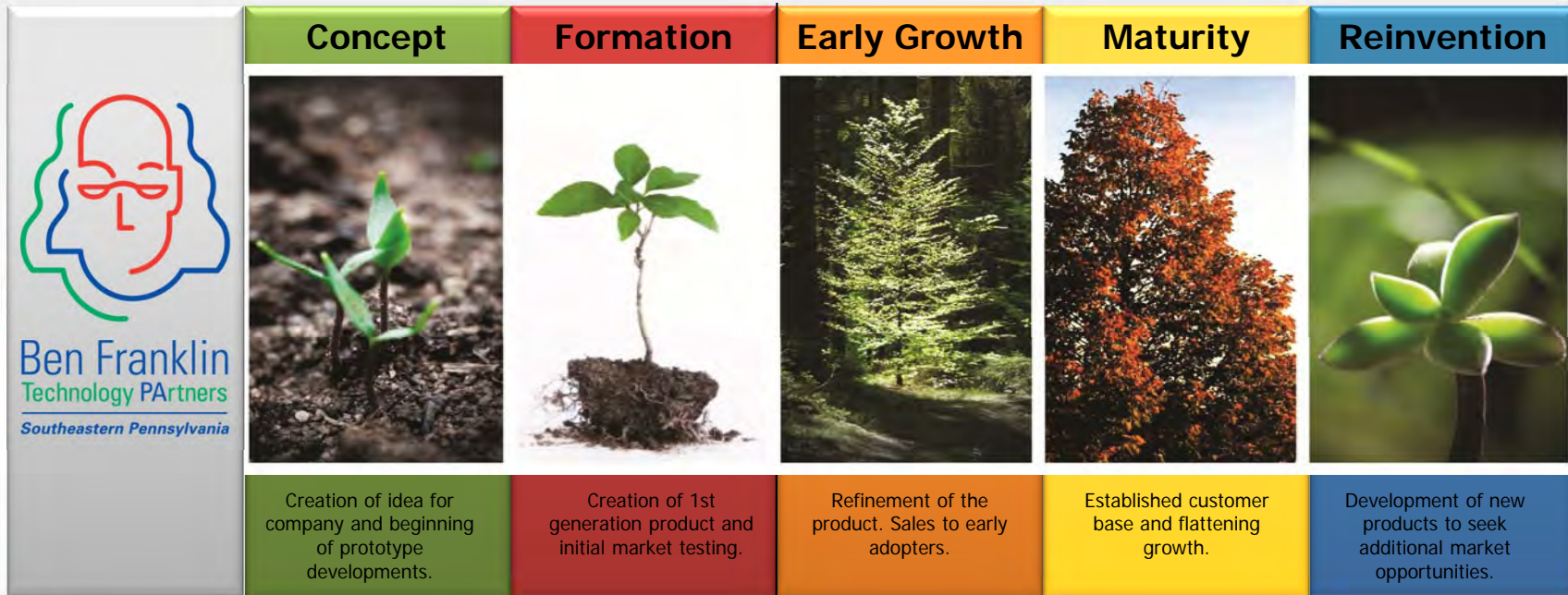
- ✓ Bolstered the state economy by \$9.3B
- ✓ Returned \$3.50 for each \$1.00 invested by state
- ✓ Generated >\$517M in additional tax revenue for PA
- ✓ \$54,509 weighted-average annual salary from BFTP clients:
33% higher than average for all private nonfarm industries in PA

BFTP/SEP 2001-2012

- ✓ Committed > \$65M to > 475 early-stage companies
- ✓ Client companies raised more than \$1.2B in follow-on investment
- ✓ Client companies created or retained over 3500 high-tech jobs
- ✓ University partnerships leveraged \$700M into the region
- ✓ A lead partner in securing \$129M DOE Innovation Cluster

* Based on PA Economy League Report, 2009

Lifecycle Support



Capital, Knowledge & Networks

Capital

Money & Smarts at the Right Moment

- **Seed investments & risk capital up to \$750K**
 - \$50K Tech Commercialization Fund for proof-of-concept (50% cash match min)
 - \$100K - \$750K Core Investments (1:1 cash match)
- **Hands-on business development & management assistance**
- **GP/LP in regional seed funds**



2001-2012

- **Committed > \$65M to over 475 early stage companies**
- **Clients raised > \$1.2B in follow-on investment**

BFTP/SEP

An active seed/early stage investor



Q4 2011: Greater Philadelphia

BFTP/SEP's investments represented 61% of all companies funded in the five county region

- PwC MoneyTree™



Q4 2011: Nationally

Ranked 10th by # of deals

Rank	Firm	City	Deal #
1	500 Startups	Mountain View, CA	37
2	New Enterprise Associates	Menlo Park, CA	27
3	First Round Capital	West Conshohocken, PA	20
4	Google Ventures	Mountain View, CA	17
5	Kleiner Perkins Caufield & Byers	Menlo Park, CA	17
6	Benchmark Capital	Menlo Park, CA	16
7	Bessemer Venture Partners	Larchmont, NY	16
8	True Ventures	Palo Alto, CA	16
9	Polaris Venture Partners	Waltham, MA	13
10	Ben Franklin Technology Partners Southeastern PA	Philadelphia, PA	12

Capital

Seeding the next crop of tech enterprises

1980's

1990's

2000's

Today



Acquired by
Teva Pharmaceuticals



Nasdaq: INFO



Acquired by
Cubist
Pharmaceuticals



Acquired by
BEA Systems



Acquired by
Eisai



IPO in 2010



Acquired by
Johnson & Johnson



Architects of the New Biomaterials Age



MOBILE DATA ACQUISITION PLATFORM



Acquired by
Dell



Nasdaq: VPHM



HEALTH MARKET SCIENCE



a division of THERMACORE



Analysis software for land, sea, air, & space

Private
Bought out investors



Acquired by
Liberate (NAS:LBRT);
Acquired by COMCAST



Empowering Global Remittances



power economics redefined



Never miss a beat.™

Nasdaq: CDNW
Acquired by
Bertelsmann



Acquired by Multex
Nasdaq: MLTX

COATES ANALYTICS
AN AFFILIATE OF PERSHING



Healthcare Payments Simplified



Capital Client Profiles

TICKETLEAP

- Target customer: *Event organizers*
 - Product: *Online ticket sales & event management software*
- 
- **\$525K from BFTP/SEP, 2008 -2011**
 - Commercialization efforts, VP of Business Development & technology improvements
 - Advice on management, branding & website design
 - **\$6M raised, 2009-2012**
 - **10 fold revenue increase since 2008**
 - **2011 Top 10 Fastest-Growing Companies in the Delaware Valley by Philadelphia 100**
 - **From 3 → 24 employees, 2012**

monetate®

- Target customer: *E-commerce website operators*
- Product: *Software to develop & test target marketing campaigns for products & services*
- **\$250,000 from BFTP/SEP, 2008**
 - Product improvements & commercialization
- **\$5.1 million Series A round, 2010**
 - FirstRound Capital
- **\$15 million in VC Series B round, 2011**
- **Monetate CEO David Brussin, 2012 Ernst & Young Entrepreneur Of The Year® for Greater Philadelphia**
- **David Bookspan, Founder & Chairman, co-Founder of Dreamit Ventures**
- **From 3 → 100 employees, 2012...hiring**

Capital Client Profiles



- Target customer: *Cancer patients*
- Product: *Antibodies for treatment of cancer, inflammatory & infectious diseases*
- Founder & CEO: Nicholas Nicolaides, Ph.D.
- BFTP/SEP investment of \$200K in 2000
- Purchased by Eisai in 2007 for \$325M
- August 2012 Dedication Ceremony schedule for new \$80MM, 60,000 square foot pilot manufacturing plant to make drugs for clinical trials in Chester Co., Pa.

- From 4 → 150+ employees, 2012



- Target customer: *High energy usage enterprises i.e. universities & municipalities*
- Product: *Software & services to manage energy consumption*
- Founder, President & CEO: Audrey Zibelman; former EVP & COO PJM (Mid-Atlantic regional power transmission)
- \$400K from BFTP/SEP, 2010 (\$350K AEDP; \$50K US DOE)
 - Develop SEPTA Wayside Energy Project to capture & reuse energy from train braking system
- \$15M raised from Mitsui & Co. Ltd., 2012; \$15M raised from Braemar Energy Ventures, 2011
- Customers: *Drexel University, American Electric Power, US Army (Ft Meade), Navy Yard, SEPTA*
- From 10 → 30+ employees, 2012

Capital

Seeding the Capital Continuum & Supporting Entrepreneurship



- Boot-camp for IT entrepreneurs
- 65 companies, raised \$45M+, valuations > \$200M
- Comcast Minority Entrepreneur Accelerator & Minority Angel Investor Network (2011) 1st investment FY'12
- Dreamit Plus: BFTP/SEP & Angels: 2 Investments
- \$50M capital raise underway
- Pilot replicated in NY, Israel



- **First private investor group focused on high-growth, minority businesses**
- **Created by BFTP/SEP**
- **10 company investments**
- **2 in 2012; 1 w/ BFTP/SEP (Dreamit)**



- **MAG I & II: \$9.5M invested in 23 companies**
- **Invested in 6 companies in FY'12; 4 companies with BFTP/SEP**



- **\$13.5M early-stage IT fund**
- **BFTP/SEP General Partner & Lead Limited Partner @ \$5M**
- **Invested \$9.1M in 9 companies; 3 with BFTP/SEP**



Digital Incubator

Interstate General Media



John S. and James L. Knight Foundation



1st class of 3 companies...\$2M raised in 2012

- ALL Dreamit
- 1 PMN partnership
- 1 Dreamit Plus
- ALL BFTP/SEP funded
- 1 Comcast MEAP/MAIN

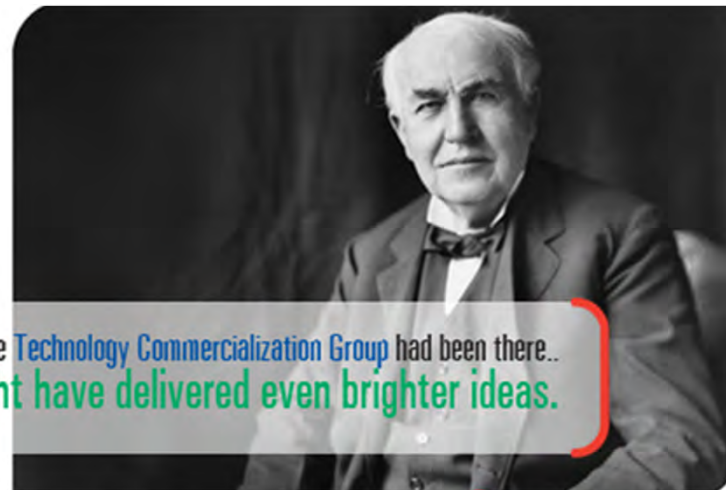
Ben Franklin Talent Connect

Internship program connecting students to regional technology companies

Knowledge

Getting Ideas to Market...Faster

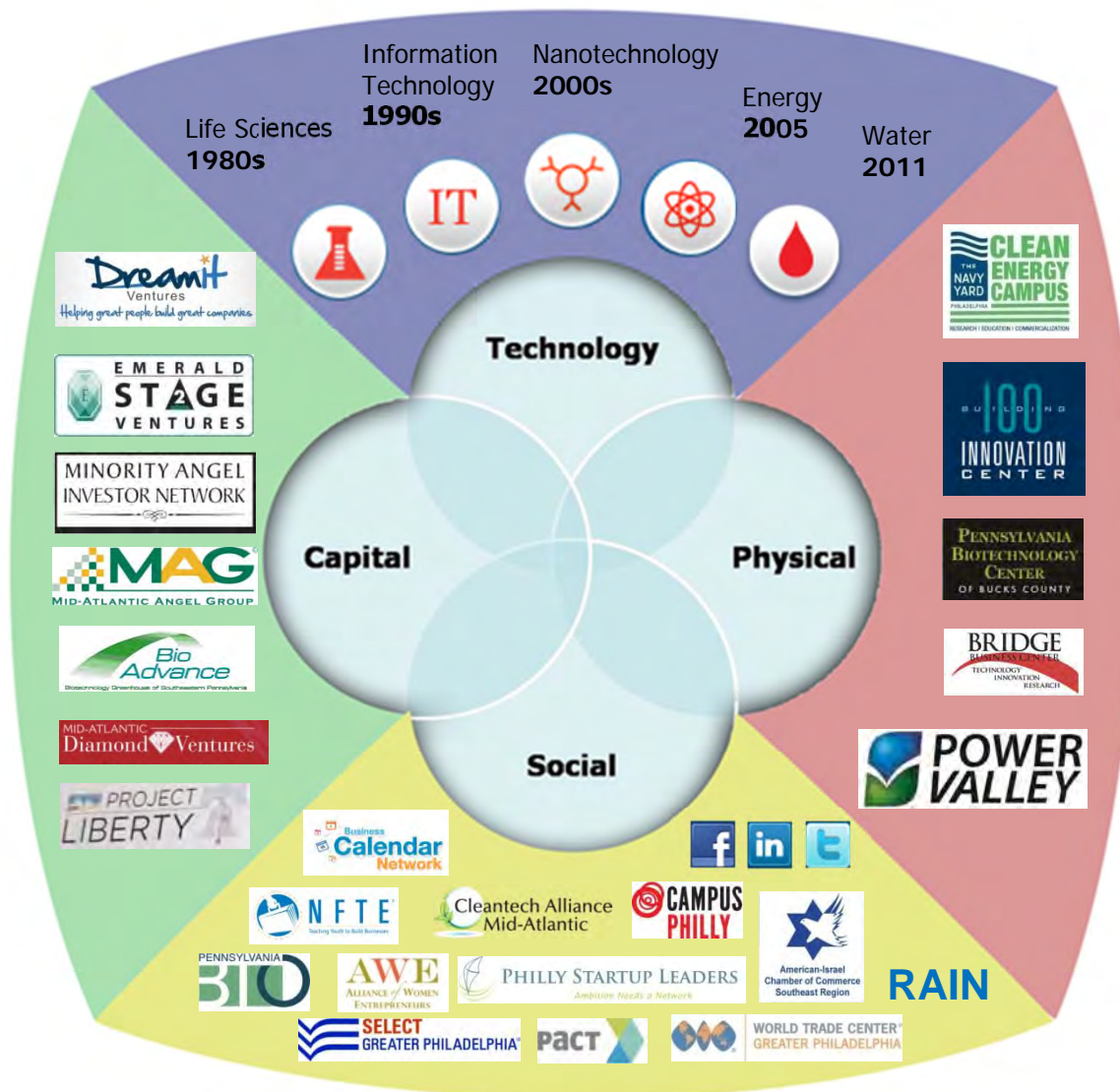
- **Ben Franklin Technology Commercialization Network**
 - 25+ University, government & private partners
- **Structured industry/university partnerships**
 - Leverage distinct capabilities of region's institutions & industry interests
- **Ben Franklin Technology Commercialization Solutions**
 - Customized approaches to advance Open Innovation Strategies



2001-2012

- Solved product development challenges for > 250 companies
- Clients commercialized > 1150 products & processes
- \$700M+ to region via univ/ind consortia

Networks: *Strengthening the Region's Innovation Infrastructure*





EEBHUB

Energy
Efficient
Buildings
Hub

- **\$130M DOE Energy HUB; \$30M PA**
- **Improve energy efficiency & operability & reduce carbon emissions of new & existing buildings.**
- **Stimulate private investment & quality job creation in the Greater Philadelphia region & beyond.**



Networks

Partnering for Growth



Dreamit Ventures
Helping great people build great companies

EMERALD STAGE VENTURES

Advanced Manufacturing Accelerator

Bio Advance
Bioscience Entrepreneur of Southeastern Pennsylvania

The Inquirer **DAILY NEWS** **philly.com**
anything & everything philly

NAMII NATIONAL ADDITIVE MANUFACTURING INNOVATION INSTITUTE

SELECT GREATER PHILADELPHIA

Business Calendar Network

WALLACE H. COULTER FOUNDATION

CITY OF PHILADELPHIA
LIFE • LIBERTY • AND YOU

PACT Greater Philadelphia Alliance for Capital and Technologies

eebHUB Energy Efficient Buildings Hub

PENNSYLVANIA BIOTECHNOLOGY CENTER
OF BUCKS COUNTY

RAIN Regional Airway Incubation Network

Deloitte
Fast 50
2011 Greater Philadelphia

NAVSEA
NAVAL SEA SYSTEMS COMMAND

Drexel UNIVERSITY

DELAWARE TECHNOLOGY PARK

Clean Energy Council

panma
Philadelphia Area New Media Association

FOX CHASE CANCER CENTER

FOR GROWTH

BRIDGE BUSINESS CENTER
TECHNOLOGY INNOVATION RESEARCH

Cleantech Alliance Mid-Atlantic™

NETWORK FOR TEACHING ENTREPRENEURSHIP
Start it up.

PHILADELPHIA UNIVERSITY
1884

THE NANOTECHNOLOGY INSTITUTE

rian Regional Innovation Acceleration Network

Penn UNIVERSITY OF PENNSYLVANIA

WORLD TRADE CENTER GREATER PHILADELPHIA

INNOVATION PARTNERSHIP
www.innovationpartnership.net

DEPARTMENT OF COMMERCE
UNITED STATES OF AMERICA

BUILDING INNOVATION CENTER

SEI EARLY STAGE EARLY

WATER AND ENVIRONMENTAL TECHNOLOGY CENTER

AWE ALLIANCE OF WOMEN ENTREPRENEURS

GREATER PHILADELPHIA CHAMBER OF COMMERCE
Get involved. Get results.™
greaterphilachamber.com

GREATER PHILADELPHIA LIFE SCIENCES CONGRESS
P A R T N E R S

PENNSYLVANIA BIO
The Voice of Advancement for the Bioscience Industry

CHINA PARTNERSHIP OF GREATER PHILADELPHIA

AIRC MID-ATLANTIC Diamond Ventures

AIBL Global Clean-Tech Incubator

PHILLY STARTUP LEADERS
Ambition Needs a Network

GREATER PHILADELPHIA CHAMBER OF COMMERCE

Sc science center

ROBINHOOD VENTURES

FEDERAL RESERVE BANK OF PHILADELPHIA

MAG MID-ATLANTIC ANGEL GROUP

Pennsylvania Green Growth Partnership

iPRAXIS Innovation For All

The Forum of Executive Women

ENERGY COMMERCIALIZATION INSTITUTE

MINORITY ANGEL INVESTOR NETWORK

American-Israel Chamber of Commerce

Greater Philadelphia STEM

NJTC NEW JERSEY TECHNOLOGY COUNCIL

SolarCity

CLEAN ENERGY CAMPUS
THE NAVY YARD PHILADELPHIA
RESEARCH • EDUCATION • COMMERCIALIZATION

GREENWORKS PHILADELPHIA

Networks *Advocacy & Policy*



- **National:** NACIE; SSTI; RIAN; IEDC; NASVF; AEE; Next Economy Partnership Project; NVCA
- **Regional:** DVRPC CEDs; RAIN; Life Science Leadership Advisory Council; Mayor's Sustainability Advisory Board; Solar Cities Partnership; EEB HUB Executive Board & Strategic Planning Steering Committee; Federal Reserve Economic Advisory Council; Select Greater Philadelphia CEO Council for Growth; Upper Merion Advisory Committee & others

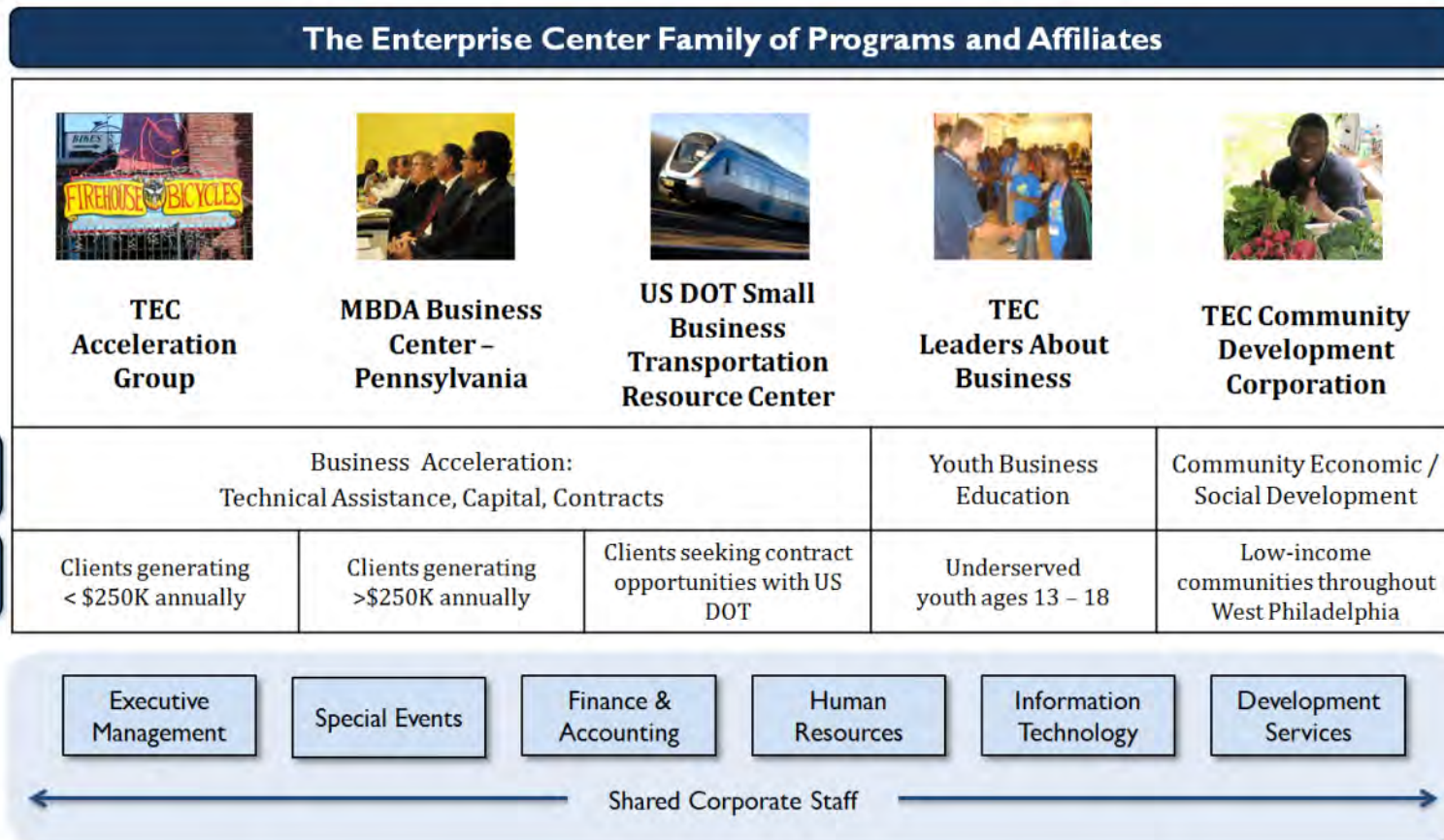
Clients (a sampling)



A Holistic Approach to Community Economic Development

October 2012

TEC Community Development Corporation is a member of the TEC family of programs



TEC programs have a strong track record securing and leveraging public investments

Local / State



\$750,000 toward CCE
via NCAT/ NED Programs



\$500,000 toward CCE



\$546,722 toward CCE via Discovered
and Developed in PA Program

Federal



\$784,595 toward CCE
via CED Program



\$1,509,536 toward
CCE via Special Grant



\$1,375,000 toward MBC
of Pennsylvania Contract



\$183,000 toward
MA-SBTRC Contract

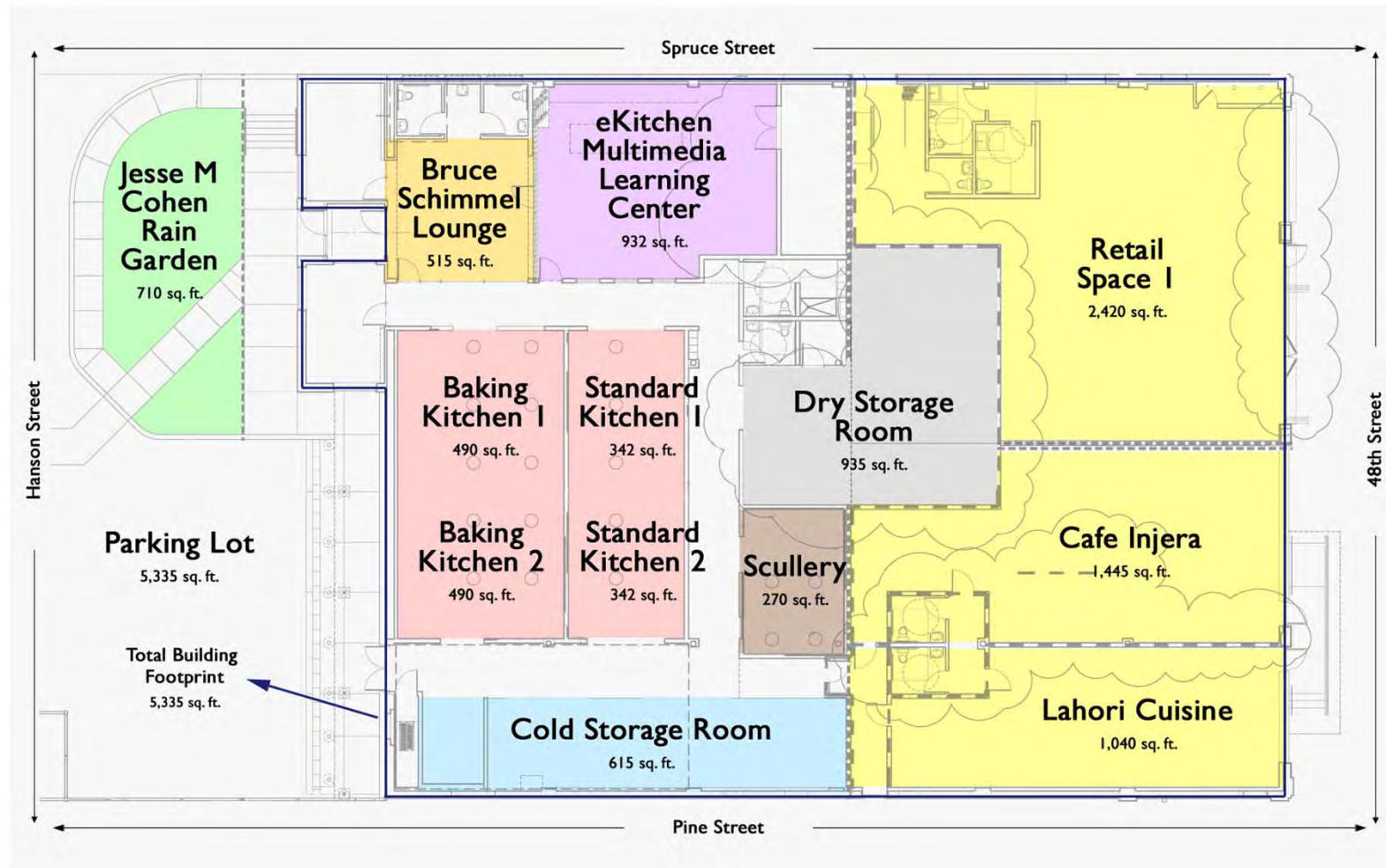
TEC-CDC's community economic development strategy is informed by a comprehensive plan



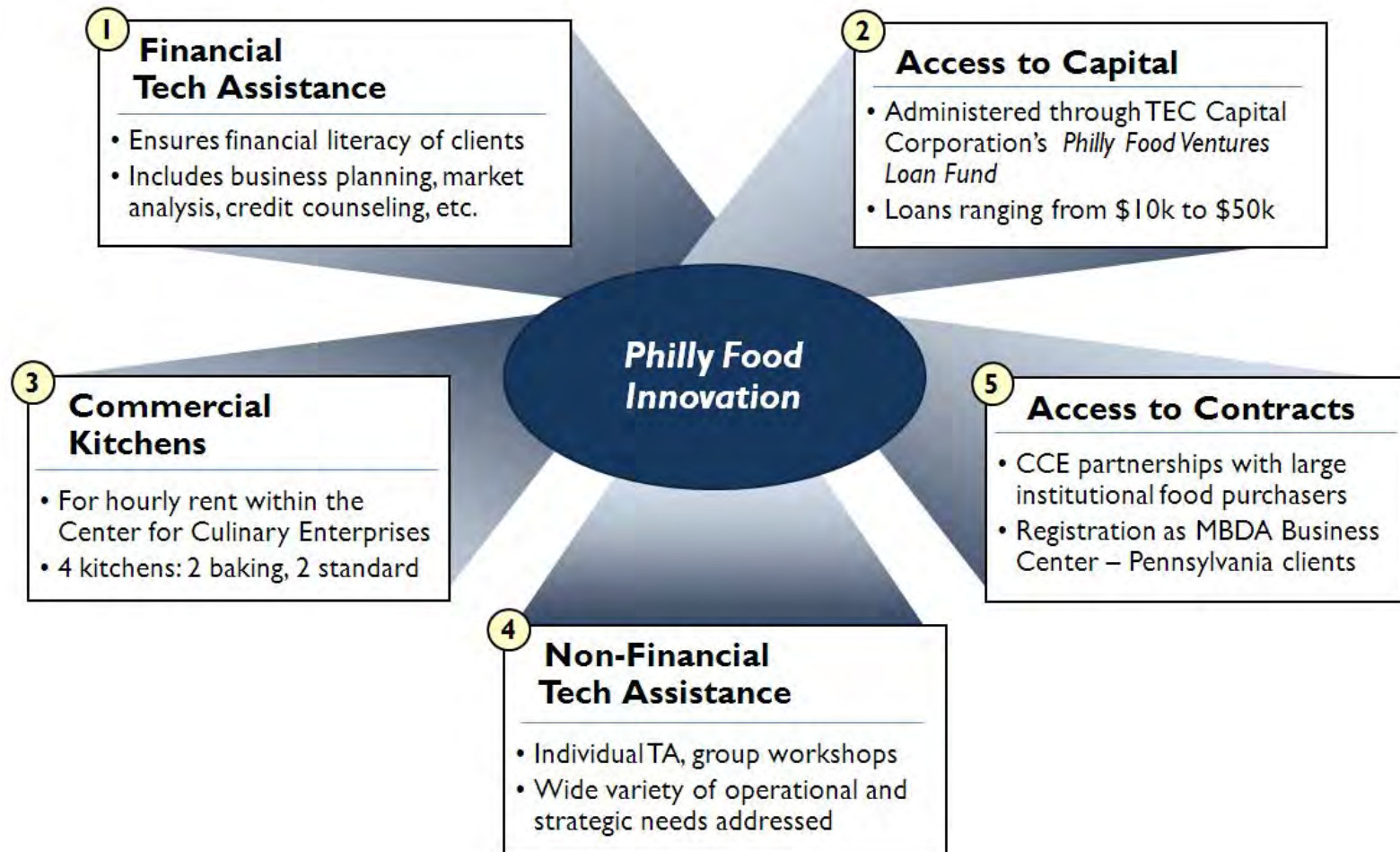
The Center for Culinary Enterprises is a central project achieving the Plan's goals



The CCE features commercial kitchens for rent and the eKitchen Multimedia Learning Center



Philly Food Innovation is the CCE's food business development program



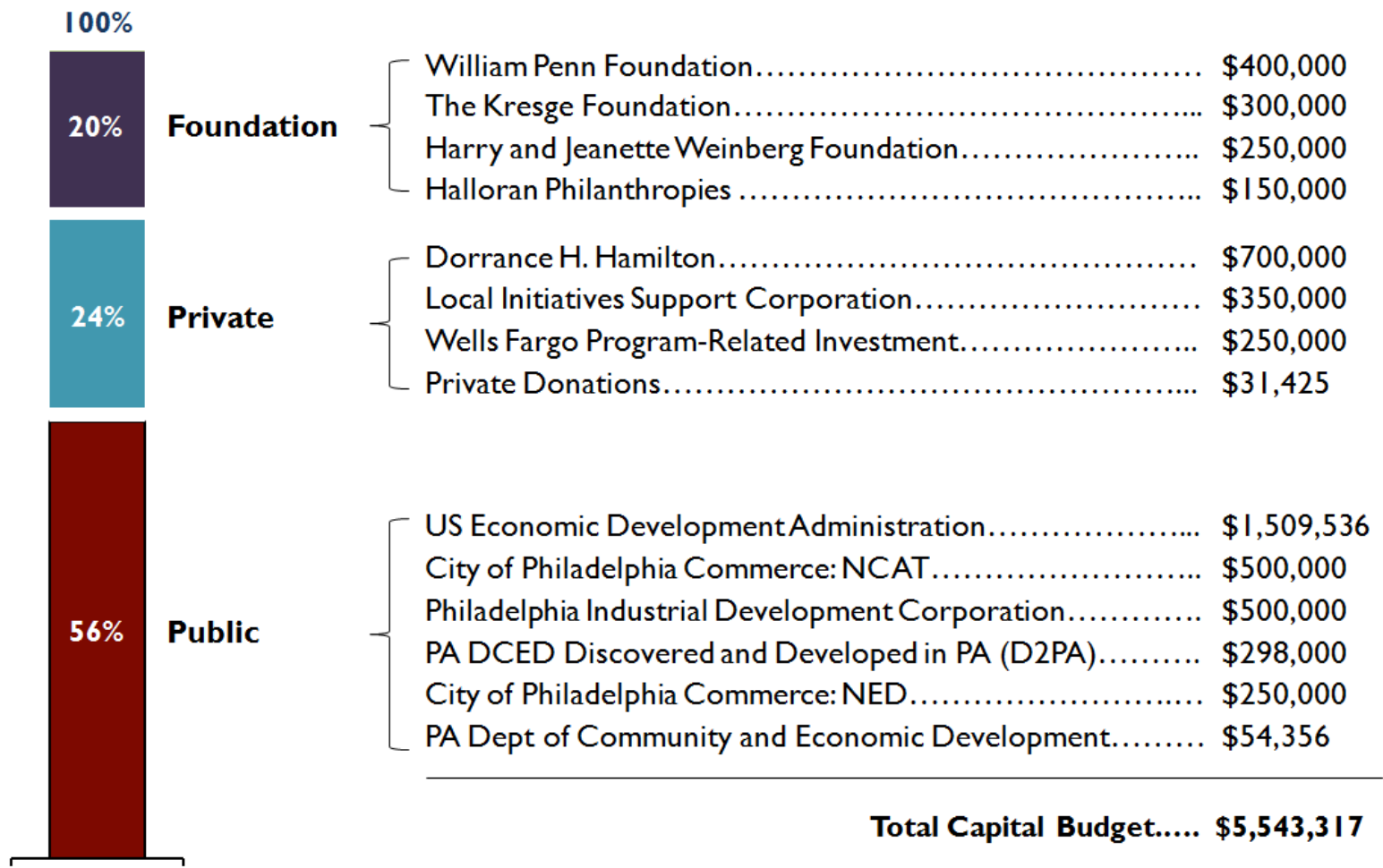
The CCE will achieve the following projected outcomes annually

- 13 full-time jobs and 32 part-time jobs created through CCE staffing.
- 10 new food businesses launched or accelerated.
- Between 36 and 63 jobs created by clients using kitchens.
- Estimated full-time-equivalent (FTE) job creation
 - 1-year: 54 to 81
 - 3-year: 126 to 207
- 50 individuals placed in workforce positions in the culinary industry.
- 100 high school students trained in restaurant and hospitality mgmt.
- 400 community residents served with health & nutrition programs.

The CCE will achieve the following projected outcomes annually

- 13 full-time jobs and 32 part-time jobs created through CCE staffing.
- 10 new food businesses launched or accelerated.
- Between 36 and 63 jobs created by clients using kitchens.
- Estimated full-time-equivalent (FTE) job creation
 - 1-year: 54 to 81
 - 3-year: 126 to 207
- 50 individuals placed in workforce positions in the culinary industry.
- 100 high school students trained in restaurant and hospitality mgmt.
- 400 community residents served with health & nutrition programs.

A diverse portfolio of public / private donors funded the CCE's \$5.5 million capital campaign



Major CCE Capital Funders Include the Following Organizations

THE KRESGE FOUNDATION



View of Retail Storefronts from 48th St.

BEFORE



View of Retail Storefronts from 48th St.

AFTER



View of Storefronts from 48th St. sidewalk

BEFORE



View of Storefronts from 48th St. sidewalk

AFTER



View of Main Entrance from S. Hanson St.

BEFORE



View of Main Entrance from S. Hanson St.

AFTER



View of Interior

BEFORE



View of Interior – Bruce Schimmel Lounge

AFTER



View of Interior – Traditional Kitchens

AFTER



View of Interior – Baking Kitchens

AFTER



View of Interior – eKitchen Learning Center

AFTER

