

Shape Your Waterfront

How to
promote
access,
resiliency,
and ecology
at the water's
edge

Roland Lewis 6.20.2017



Waterfront Edge
Design Guidelines



WATERFRONT
ALLIANCE

@ourwaterfront

Mission



**The Waterfront Alliance works to protect, transform,
and revitalize our harbor and waterfront.**

Constituency building





©Etienne Frossard





Camden Waterfront



But there is also...



And this...



And this...



And this...



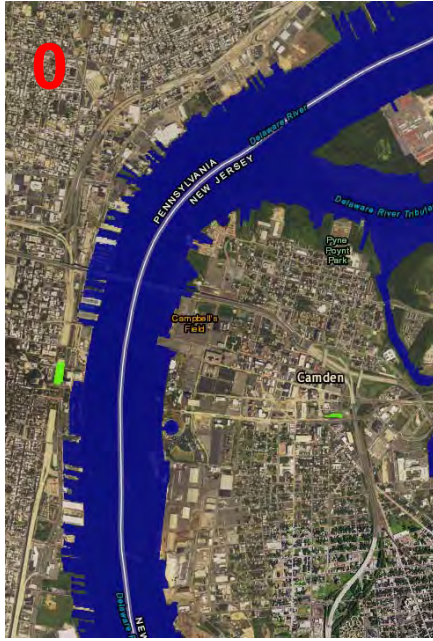
And this...



And this...



And this...



NOAA sea level rise viewer

How can we do better?

A REPORT FROM THE METROPOLITAN WATERFRONT ALLIANCE
ON THE FUTURE OF THE NEW YORK/NEW JERSEY WATERFRONT

GREEN HARBOR

- Aquaculture
- Green Harbor
- Harbor Education
- Harbor Recreation
- Mass Water Transit
- Working Waterfront



While the harbor is cleaner than it has been in six years, significant pollution persists. As new development reshapes the waterfront, we must not only protect the environmental but improve it. Challenges abound.

- PUBLIC AWARENESS IS LOW
- CLIMATE CHANGE IS NOT HEEDED
- URBAN DESIGN PRIORITY IS POLLUTION
- ENVIRONMENTAL INNOVATION IS NOT ALWAYS SUPPORTED BY PUBLIC POLICY

Solutions? Turn the page...

THE WHITE PAPERS 2008/2009

VISION 2020

**NEW YORK CITY
COMPREHENSIVE
WATERFRONT PLAN**



NYC PLANNING





Evidence-based



Physical (**beaches**) and biological (**algae**, rooted **vegetation**, **oyster reefs**) structures of the shore zone help to **dissipate energy** from waves and currents...(Coops et al. 1996, Strayer and Findlay 2010, Scyphers et al. 2011).

...**narrowing** and **tidying** of the shore zone, shortening and simplification of the shoreline...**decrease local biodiversity** and rates of many biogeochemical processes.

Principles



Enhance ecology,

Encourage maritime use

Use a science-based, evaluative process for restoration

Commit to equity and community input

Promote resiliency

Enhance public access, especially for boats

Credit system



-  1. Site Selection & Planning
-  2. Public Access & Interaction
-  3. Edge Resiliency
-  4. Ecology & Habitat
-  5. Materials & Resources
-  6. Operations & Maintenance
-  7. Innovation

SCORECARD			WEDG				
Residential/Commercial Project Type							
40 POSSIBLE POINTS							
CATEGORY 1: Site Selection & Planning (25 & P)							
Y	T	N	POSSIBLE POINTS	43	Y	T	N
			Credit 1.1	1			
			Credit 1.2	1			
			Credit 1.3	1			
			Credit 1.4	1			
			Credit 1.5	1			
			Credit 1.6	1			
			Credit 1.7	1			
			Credit 1.8	1			
			Credit 1.9	1			
			Credit 1.10	1			
			Credit 1.11	1			
			Credit 1.12	1			
			Credit 1.13	1			
			Credit 1.14	1			
			Credit 1.15	1			
			Credit 1.16	1			
			Credit 1.17	1			
			Credit 1.18	1			
			Credit 1.19	1			
			Credit 1.20	1			
			Credit 1.21	1			
			Credit 1.22	1			
			Credit 1.23	1			
			Credit 1.24	1			
			Credit 1.25	1			
			Credit 1.26	1			
			Credit 1.27	1			
			Credit 1.28	1			
			Credit 1.29	1			
			Credit 1.30	1			
			Credit 1.31	1			
			Credit 1.32	1			
			Credit 1.33	1			
			Credit 1.34	1			
			Credit 1.35	1			
			Credit 1.36	1			
			Credit 1.37	1			
			Credit 1.38	1			
			Credit 1.39	1			
			Credit 1.40	1			
			Credit 1.41	1			
			Credit 1.42	1			
			Credit 1.43	1			
			Credit 1.44	1			
			Credit 1.45	1			
			Credit 1.46	1			
			Credit 1.47	1			
			Credit 1.48	1			
			Credit 1.49	1			
			Credit 1.50	1			
			Credit 1.51	1			
			Credit 1.52	1			
			Credit 1.53	1			
			Credit 1.54	1			
			Credit 1.55	1			
			Credit 1.56	1			
			Credit 1.57	1			
			Credit 1.58	1			
			Credit 1.59	1			
			Credit 1.60	1			
			Credit 1.61	1			
			Credit 1.62	1			
			Credit 1.63	1			
			Credit 1.64	1			
			Credit 1.65	1			
			Credit 1.66	1			
			Credit 1.67	1			
			Credit 1.68	1			
			Credit 1.69	1			
			Credit 1.70	1			
			Credit 1.71	1			
			Credit 1.72	1			
			Credit 1.73	1			
			Credit 1.74	1			
			Credit 1.75	1			
			Credit 1.76	1			
			Credit 1.77	1			
			Credit 1.78	1			
			Credit 1.79	1			
			Credit 1.80	1			
			Credit 1.81	1			
			Credit 1.82	1			
			Credit 1.83	1			
			Credit 1.84	1			
			Credit 1.85	1			
			Credit 1.86	1			
			Credit 1.87	1			
			Credit 1.88	1			
			Credit 1.89	1			
			Credit 1.90	1			
			Credit 1.91	1			
			Credit 1.92	1			
			Credit 1.93	1			
			Credit 1.94	1			
			Credit 1.95	1			
			Credit 1.96	1			
			Credit 1.97	1			
			Credit 1.98	1			
			Credit 1.99	1			
			Credit 1.100	1			

and guidelines

ER-CREDIT 3.2

Shoreline

Configuration:

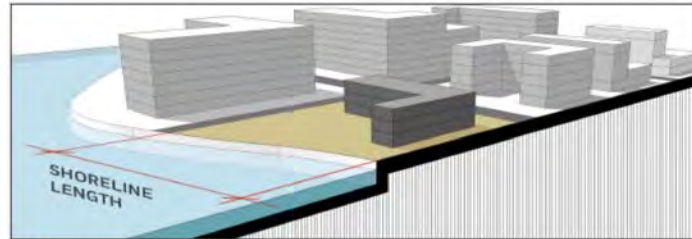
Reduce Slope

POSSIBLE 6 PTS

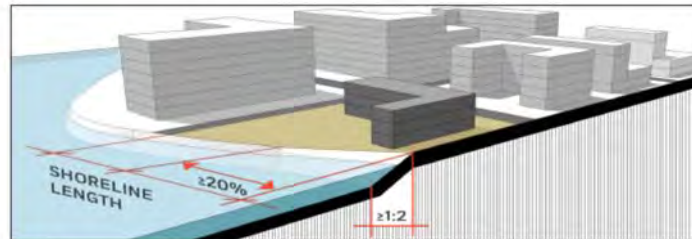


Gradually sloped shorelines – rather than a hardened or more vertical shoreline – can progressively dissipate wave energy, reducing reflection and amplification while also improving the aquatic habitat within the intertidal zone. Reconfigure at least 20% of the shoreline but not less than 50 feet to a maximum slope of 1:2. (Note: Changes to the shoreline configuration should be analyzed by the project team for hydrological impacts regarding, storm surge/flooding, wave regime, and stream velocity/currents.) Provide a grading plan to demonstrate compliance with this credit.

- a) Reconfigure the shoreline length to a maximum slope of 1:2 **2 PTS**
- b) Reconfigure the shoreline length to a maximum slope of 1:3 **4 PTS**
- c) Reconfigure the shoreline length to a maximum slope of 1:4 **6 PTS**



BEFORE



AFTER

for better engagement



and improved practice



Hunters Point South, Queens, NY

Most importantly...a communication tool



WEDG Task Force (partial list)

Government

- US ACOE
- USCG
- US HUD
- NYS DOS
- NYS DEC
- NYC DCP
- NYC DEP
- NYC DPR
- NYC SBS
- NYC EDC
- NYC Mayor's Office
(OLTPS/ORR)
- NJ DEP
- PA NY/NJ
- NYC DOT
- NYC DDC

Experts/Consultants

- AECOM
- AKRF
- Arcadis
- ARUP
- Biohabitats
- dlandstudio
- Ed Weinstein Architecture
- FXFOWLE
- Great Ecology
- HDR
- Langan Engineering
- Louis Berger Group
- OCC
- Parsons Brinkerhoff
- Ray Fusco Inc.
- SeArc
- SCAPE
- Starr Whitehouse
- Studio V

Stakeholders/Users

- NYC Water Trails Association
- Hudson River Park Trust
- New Yorkers for Parks
- Brooklyn Bridge Park
- Hudson River Foundation
- NY-NJ HEP
- NPCA
- The Nature Conservancy
- ASLA/AIA/APA
- ASCE/COPRI
- Cornell University
- Stevens Institute/CRUX
- Working Harbor Committee
- CON ED
- NYCHA
- WE ACT
- Trust for Public Land
- Align NY

Milestones to date...

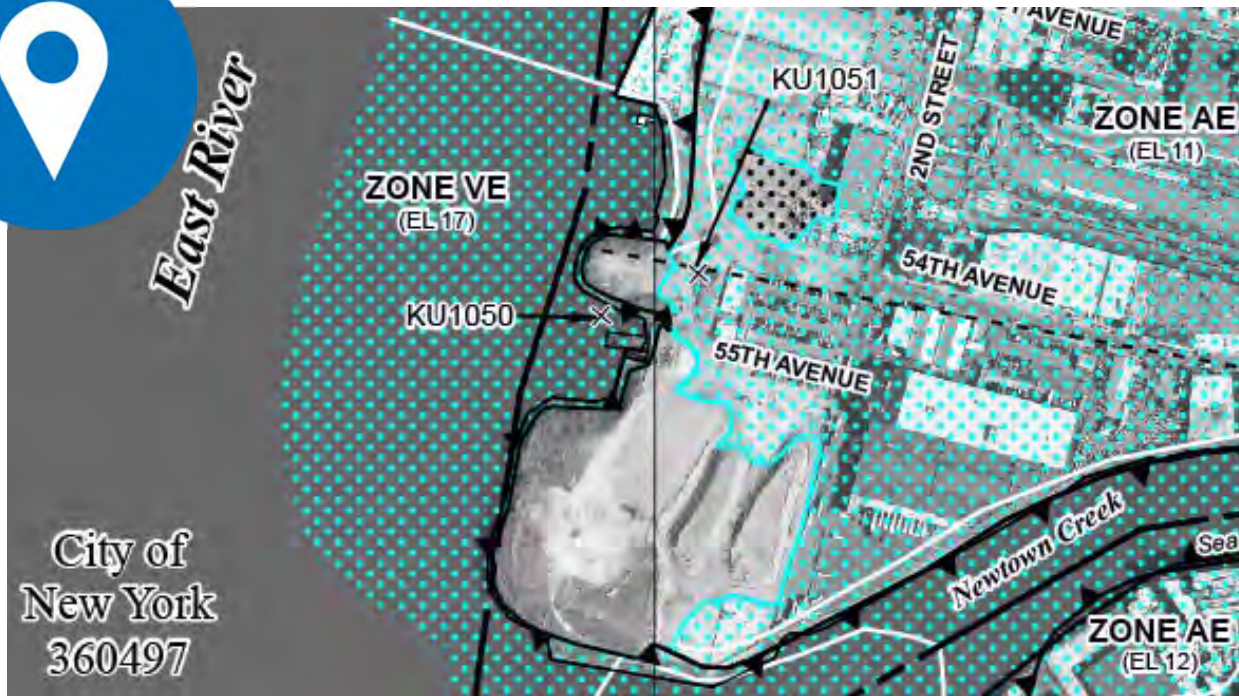


- Six certifications
- Three awards
- Over 2,000 downloads
- National presentations: **APA, ASLA, Restore America's Estuaries**



Components

Site Selection & Planning



Public Access & Interaction

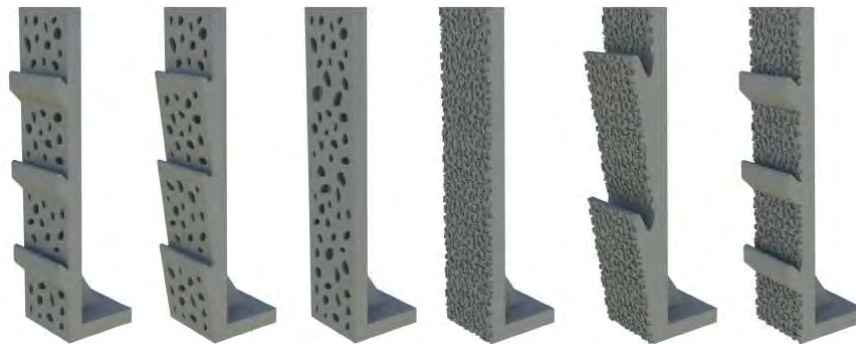


PA&I Credit 2

Engage local community and users



Edge Resiliency



Ecology & Habitat



Materials & Resources



Operations & Maintenance



Category 7: Innovation



Moving forward...

WEDG 2017



Community focus



Growth and new partnerships





Thanks!

rlewis@waterfrontalliance.org

Connect with us

🖥️ www.waterfrontalliance.org

✉️ kboicourt@waterfrontalliance.org

🐦 Follow: [@OurWaterfront](https://twitter.com/OurWaterfront)

📘 facebook.com/WaterfrontAlliance



Supported by:



THE NEW YORK
COMMUNITY TRUST

