

**Changes to Census Tract Boundaries:
1990 to 2000**

No.8
May 2003

The Delaware Valley Regional Planning Commission (DVRPC) is an interstate, inter-county, and intercity agency serving the Philadelphia-Camden-Trenton Metropolitan area. As the region's metropolitan planning organization (MPO), the commission provides technical assistance and services to its member state, county and local governments, the private sector and the public. The DVRPC region includes five Pennsylvania counties (Bucks, Chester, Delaware, Montgomery and Philadelphia) and four New Jersey counties (Burlington, Camden, Gloucester and Mercer). *Delaware Valley Data* is our periodic series of free reference guides, data bulletins and analytical reports. This data reference guide describes changes to census tract boundaries that were made by the United States Census Bureau between the 1990 and 2000 census.

Background

Census tracts are small, statistical subdivisions of a county delineated by local participants as part of the United States Census Bureau's Participant Statistical Areas Program. The primary purpose of census tracts is to provide a stable set of geographic units for the presentation of decennial census data. The 2000 census marks the first time that the entire United States is delineated into census tracts.

Census tracts are identified by a four-digit basic number and may have a two-digit numeric suffix; for example, 6059.02. The Federal Information Processing Standards (FIPS) code for each tract also includes a two-digit state prefix followed by a three-digit county code (for example, FIPS code "42017 1001.01" identifies a tract located in Bucks County (017), Pennsylvania (42)). The decimal point separating the four-digit basic tract number from the two-digit suffix is shown in printed reports and on DVRPC maps. In computer-readable files, the decimal point is implied.

Generally, between 1,500 and 8,000 people live in a census tract, with an optimum size of 4,000 people. The spatial size of census tracts varies significantly depending on the density of development. When first delineated, census tracts were designed to be homogeneous with respect to population characteristics, economic status, and living conditions. It was also intended that tract boundaries be maintained over several decades so that statistical comparisons could be made from one decennial census to the next. However, physical changes in street patterns caused by highway construction and new development have required occasional boundary revisions. Additionally, census tracts occasionally have been split (due to population growth) or combined (as a result of substantial population decline). Proposed boundaries are reviewed by local, state, or tribal governments, which may adjust them to reflect new visible features and better define the geographic area, or to account for shifts and changes in the population distribution within an area.

If a census tract is split, the two (or more) new tracts are usually assigned unique numbers; tract "42101 347", for example, may be split into two tracts identified as "42101 347.01" and "42101 347.02". Similarly, census tracts which have been created by combining several tracts into one should also be assigned a unique number, as should census tracts whose boundaries are significantly revised from one decennial census to the next. Assigning a unique number to newly-defined tracts prevents researchers from comparing tracts whose boundaries have been significantly revised from one decade to the next.

In numerous cases in the Delaware Valley, however, combinations of two or more 1990 census tracts were assigned one of the 1990 tract numbers (usually of the largest tract) as the new 2000 tract number. In some cases, small "slivers" of land that had been split from the original tract in a previous census (usually labelled with ".98" or ".99" suffixes) were added back on to adjacent larger tracts. In other cases, tracts with declining populations were combined with adjacent tracts. Table 1 lists tract combinations that were assigned a number identical to one of the original 1990 tract numbers by the United States Census Bureau. Historical analysis of population trends in any of these tracts should be done with caution, since in some cases there may be a 1990 tract with a number identical to that of a 2000 tract which in reality has very different geographic boundaries.

Census Tract Changes in the Delaware Valley

Numerous census tract boundaries in the Delaware Valley were revised between 1990 and 2000. The re-drawing of census tract boundaries (as opposed to combining or splitting tracts) usually occurs as the result of physical changes in visible features (including street patterns), political redistricting, or legal challenges. These changes, shown in purple on the attached county maps, can occur almost anywhere and are consequently scattered somewhat randomly across the region. The following discussion instead focuses on tracts that were split or consolidated due to population growth or decline.

Delaware, Chester and Philadelphia counties had relatively few tract changes. In Delaware County, the only census tract that was split is located in Upper Darby Township, while several tracts, concentrated mainly in and around the city of Chester, were consolidated. Chester County had few tract combinations and only four splits (in Uwchlan, West Whiteland, East Goshen and Pocopson Townships). Although Philadelphia County experienced very few splits among its many census tracts, some splits did occur in West and South Philadelphia and, most notably, in the far Northeast.

The majority of the tract splits in DVRPC's Pennsylvania counties occurred in Montgomery and Bucks counties. In Montgomery County, census tract splits were dispersed throughout the county, while in Bucks County, tract splits occurred primarily in the southern portion of the County, between the boundaries of Northeast Philadelphia and Trenton, New Jersey.

A greater number of census tract boundaries were revised across the Delaware River in DVRPC's four New Jersey counties (Mercer, Burlington, Camden and Gloucester) than in the region's Pennsylvania counties. In Mercer County, numerous tracts were split around the Trenton metropolitan area, as well as in East Windsor and West Windsor townships. Parts of Burlington County experienced significant growth since the 1990 census, resulting in census tract splits in Evesham and Mount Laurel townships. Several census tracts were split in Camden County, most notably in the County's faster-growing southeastern municipalities. Gloucester County had the fewest revisions to tract boundaries, with no consolidations and only one split (in Washington Township).

Appendix A lists census tract splits and combinations, while **Appendix B** identifies census tracts where boundaries have changed. The attached maps (one for each of the region's nine counties) illustrate 2000 census tract boundaries, highlighting tracts which were split, consolidated or otherwise revised.

While every effort has been made to review and clearly display all the changes, some revisions may be subtle and/or confusing. The reader is therefore advised to consult the United States Census Bureau's web site for further information if a detailed analysis is being undertaken that involves any of the census tracts listed in the appendices. Historical comparisons of data for any tracts that have been split or combined with other tracts since 1990 should be done with caution.

Table 1: Census Tract Combinations with Non-Unique Tract Numbers, 1990 to 2000

County	1990 Tract Numbers	2000 Tract Number	County	1990 Tract Numbers	2000 Tract Number
Burlington County, New Jersey	34005 7003.01 34005 7003.03	34005 7003.03	Delaware County, Pennsylvania	42045 4015.02 42045 4015.03	42045 4015.02
	34005 7006.03 34005 7006.04	34005 7006.03		42045 4049.02 42045 4050	42045 4050
	34005 7024 34005 7084	34005 7024		42045 4056 42045 4059 42045 4060	42045 4056
Camden County, New Jersey	34007 6027.01 34007 6027.99	34007 6027.01		42045 4055 42045 4057	42045 4057
Mercer County, New Jersey	34021 13 34021 23	34021 13		42045 4066 42045 4066.99	42045 4066
Bucks County, Pennsylvania	42017 1047.01 42017 1047.02	42017 1047.01		42045 4074.01 42045 4074.02	42045 4074.01
	42017 1057.01 42017 1057.02	42017 1057.02		42045 4082 42045 4083	42045 4082
	42017 1030.02 42017 1030.03	42017.03		Montgomery County, Pennsylvania	42091 2005.01 42091 2005.04
Chester County, Pennsylvania **	42029 3001.03 42029 3001.06 42029 3001.07 42029 3001.08 42029 3001.98	42029 3001.08 42029 3001.09		42091 2009.05 42091 2009.08	42091 2009.08

Source: Delaware Valley Regional Planning Commission, April 2003. Any historical comparisons of demographic trends in these census tracts should be undertaken with caution.

Notes: No census tracts were combined between 1990 and 2000 in Gloucester County, New Jersey.

** Parts of each of five separate tracts in Chester County were combined to form two new tracts, one of which retained the same number as one of the 1990 tracts despite having a different geography (42029 3001.08). In addition to this tract combination, one census tract in Chester County (42029 3036) was split into two separate tracts (42029 3036 and 42029 3109), one of which has the same number as the original 1990 tract (42029 3036).

Appendix A: Census Tract Splits and Combinations

Tract Splits		Tract Combinations	
1990 FIPS	2000 FIPS	1990 FIPS	2000 FIPS
Bucks County			
42017 1001.01	42017 1001.03 42017 1001.04 42017 1001.05	42017 1047.01 42017 1047.04	42017 1047.01
42017 1002.05	42017 1002.11 42017 1002.12	42017 1057.01 42017 1057.02	42017 1057.02
42017 1003.05	42017 1003.06 42017 1003.07	42017 1059.01 42017 1059.02	42017 1059
42017 1004.05	42017 1004.07 42017 1004.08	42017 1030.02 42017 1031.03	42017 1031.03
42017 1008.02	42017 1008.10 42017 1008.11		
42017 1008.06	42017 1008.08 42017 1008.09		
42017 1014.02	42017 1014.04 42017 1014.05		
42017 1021.01	42017 1021.03 42017 1021.04		
42017 1050.05	42017 1050.09 42017 1050.10 42017 1050.11		
42017 1058.02	42017 1058.07 42017 1058.08 42017 1058.09		
42017 1058.03	42017 1058.10 42017 1058.11 42017 1058.12		
Chester County			
42029 3022.01	42029 3022.03 42029 3022.04	42029 3001.03 42029 3001.06 42029 3001.07	42029 3001.08 42029 3001.09
42029 3028.01	42029 3028.04 42029 3028.05	42029 3001.08 42029 3001.98	
42029 3036	42029 3036 42029 3109		

1990 FIPS	Tract Splits		Tract Combinations	
	1990 FIPS	2000 FIPS	1990 FIPS	2000 FIPS
42029 3044.01	42029 3044.03 42029 3044.04		42029 3103 42029 3104.97 42029 3104.98	42029 3037 (part) 42029 3038.01 (part) 42029 30104

Delaware County				
1990 FIPS	Tract Splits		Tract Combinations	
1990 FIPS	1990 FIPS	2000 FIPS	1990 FIPS	2000 FIPS
42045 4011.02	42045 4011.03 42045 4011.04		42045 4015.02 42045 4015.03 42045 4049.02 42045 4050 42045 4056 42045 4059 42045 4060 42045 4055 42045 4057 42045 4058.01 42045 4058.02 42045 4066 42045 4066.99 42045 4074.01 42045 4074.02 42045 4082 42045 4083 42045 4101.01 42045 4101.02	42045 4015.02 42045 4050 42045 4056 42045 4057 42045 4058 42045 4066 42045 4074.01 42045 4082 42045 4101

Montgomery County				
1990 FIPS	Tract Splits		Tract Combinations	
1990 FIPS	1990 FIPS	2000 FIPS	1990 FIPS	2000 FIPS
42091 2006.01	42091 2006.03 42091 2006.04 42091 2006.05		42091 2005.01 42091 2005.04	42091 2005.01
42091 2007.06	42091 2007.07 42091 2007.08		42091 2009.05 42091 2009.08	42091 2009.08
42091 2010.02	42091 2010.05 42091 2010.06		42091 2076.98 42091 2077	42091 2076
42091 2032.06	42091 2032.07 42091 2032.08		42091 2089.01 42091 2089.04	42091 2089.01

1990 FIPS	Tract Splits		Tract Combinations	
	1990 FIPS	2000 FIPS	1990 FIPS	2000 FIPS
42091 2068		42091 2068.01 42091 2068.02		
42091 2070.02		42091 2070.03 42091 2070.04		
42091 2082.02		42091 2082.03 42091 2082.04		
42091 2083		42091 2083.01 42091 2083.02		
42091 2086.02		42091 2086.03 42091 2086.04		
42091 2087.01		42091 2087.03 42091 2087.04		
42091 2088.01		42091 2088.01 42091 2089.04		

Philadelphia County			
1990 FIPS	2000 FIPS	1990 FIPS	2000 FIPS
42101 37	42101 37.01 42101 37.02	42101 50 42101 50.99	42101 50
42101 39	42101 39.01 42101 39.02	42101 366 42101 366.99	42101 366
42101 40	42101 40.01 42101 40.02		
42101 41	42101 41.01 42101 41.02		
42101 42	42101 42.01 42101 42.02		
42101 83	42101 83.01 42101 83.02		
42101 169	42101 169.01 42101 169.02		
42101 176	42101 176.01 42101 176.02		
42101 263	42101 263.01 42101 263.02		

Tract Splits		Tract Combinations	
1990 FIPS	2000 FIPS	1990 FIPS	2000 FIPS
42101 347	42101 347.01 42101 347.02		
42101 348	42101 348.01 42101 348.02 42101 348.03		
42101 353	42101 353.01 42101 353.02		
42101 362	42101 362.01 42101 362.02 42101 362.03		
42101 363	42101 363.01 42101 363.02 42101 363.03		

Burlington County			
34005 7014	34005 7014.01 34005 7014.02	34005 7003.01 34005 7003.03	34005 7003.03
34005 7018	34005 7018.01 34005 7018.02	34005 7006.03 34005 7006.04	34005 7006.03
34005 7021.02	34005 7021.11 34005 7021.12	34005 7024 34005 7084	34005 7024
34005 7021.03	34005 7021.06 34005 7021.07 34005 7021.08		
34005 7021.05	34005 7021.09 34005 7021.10		
34005 7029.03	34005 7029.10 34005 7029.11 34005 7029.12		
34005 7029.04	34005 7029.07 34005 7029.08 34005 7029.09		
34005 7040.03	34005 7040.13 34005 7040.14		
34005 7040.10	34005 7040.11 34005 7040.12		

1990 FIPS	Tract Splits		Tract Combinations	
	1990 FIPS	2000 FIPS	1990 FIPS	2000 FIPS
Camden County				
34007 6011	34007 6011.01 34007 6011.02		34007 6027.01 34007 6027.99	34007 6027.01
34007 6035.02	34007 6035.06 34007 6035.07			
34007 6075	34007 6075.01 34007 6075.02 34007 6075.03 34007 6075.04 34007 6075.05			
34007 6077	34007 6077.01 34007 6077.02			
34007 6078	34007 6078.01 34007 6078.02			
34007 6082.98	34007 6082.07 34007 6082.08 34007 6082.09			
34007 6084	34007 6084.01 34007 6084.02 34007 6084.03 34007 6084.04			
34007 6085	34007 6085.01 34007 6085.02 34007 6085.03 34007 6085.04			
34007 6091.01	34007 6091.03 34007 6091.04			
34007 6092	34007 6092.01 34007 6092.02 34007 6092.03 34007 6092.04 34007 6092.05			
Gloucester County				
34015 5012.07	34015 5012.10 34015 5012.11			

Tract Splits		Tract Combinations	
1990 FIPS	2000 FIPS	1990 FIPS	2000 FIPS
Mercer County			
34021 14	34021 14.01 34021 14.02	34021 13 34021 23	34021 13
34021 26	34021 26.01 34021 26.02		
34021 27	34021 27.01 34021 27.02		
34021 29.01	34021 29.03 34021 29.04		
34021 32	34021 32.01 34021 32.02		
34021 33	34021 33.01 34021 33.02		
34021 37.01	34021 37.05 34021 37.06		
34021 37.02	34021 37.03 34021 37.04		
34021 42.02	34021 42.03 34021 42.04		
34021 43.05	34021 43.06 34021 43.07		
34021 44.01	34021 44.06 34021 44.07		

Appendix B: Census Tract Boundary Changes

PENNSYLVANIA BOUNDARY CHANGES

Bucks County	
1990	2000
42017 1001.01	42017 1001.02
42017 1007	42017 1003.02
42017 1008.06	42017 1008.07
42017 1014.02	42017 1014.01
42017 1030.02	42017 1030.01
42017 1057.03	42017 1058.01

Chester County	
1990	2000
42029 3001.01	42029 3001.08
42029 3001.07	42029 3001.06
42029 3014.02	42029 3013
42029 3027.02	42029 3027.03
42029 3027.03	42029 3027.04
42029 3032	42029 30105
42029 3032	42029 3031
42029 3035	42029 3033
42029 3041.01	42029 3039
42029 3079	42029 3082
42029 3082	42029 3079
42029 3105	42029 3033

Delaware County	
1990	2000
42045 4002	42045 4001
42045 4011.01	42045 4011.04
42045 4037.02	42045 4037.01
42045 4040.04	42045 4040.03
42045 4047	42045 4046
42045 4049.01	42045 4049
42045 4062.01	42045 4062.02
42045 4072.01	42045 4079.01
42045 4073	42045 4074.03
42045 4088	42045 4089
42045 4096.02	42045 4097.02
42045 4097.02	42045 4096.02
42045 4098.02	42045 4097.01
42045 4098.98	42045 4098.03
42045 4100	42045 4079.01

Philadelphia County	
1990	2000
42101 34	42101 35
42101 35	42101 34
42101 38.98	42101 38
42101 47.98	42101 47
42101 50	42101 51
42101 68	42101 58
42101 75	42101 34
	42101 69
42101 159	42101 181
42101 182	42101 183
42101 183	42101 184
42101 193	42101 289
42101 215	42101 216
42101 219	42101 216
42101 303	42101 304
42101 322	42101 297
42101 328	42101 349
42101 360	42101 364

Montgomery County	
1990	2000
42091 2005.01	42091 2005.05
42091 2005.02	42091 2005.01
42091 2010.02	42091 2010.03
42091 2016.03	42091 2016.06
42091 2033.04	42091 2037
42091 2036.02	42091 2037
42091 2040.02	42091 2040.08
42091 2041.02	42091 2041.01
42091 2044	42091 2043
42091 2047.02	42091 2047.01
42091 2048	42091 2049
42091 2055.02	42091 2055.03
42091 2058.05	42091 2058.08
42091 2058.06	42091 2058.05
42091 2062.02	42091 2062.01
42091 2088.01	42091 2089.06
	42091 2089.03
42091 2088.02	42091 2089.03
42091 2092.98	42091 2090
	42091 2092.02
42091 2103	42091 2104

NEW JERSEY BOUNDARY CHANGES

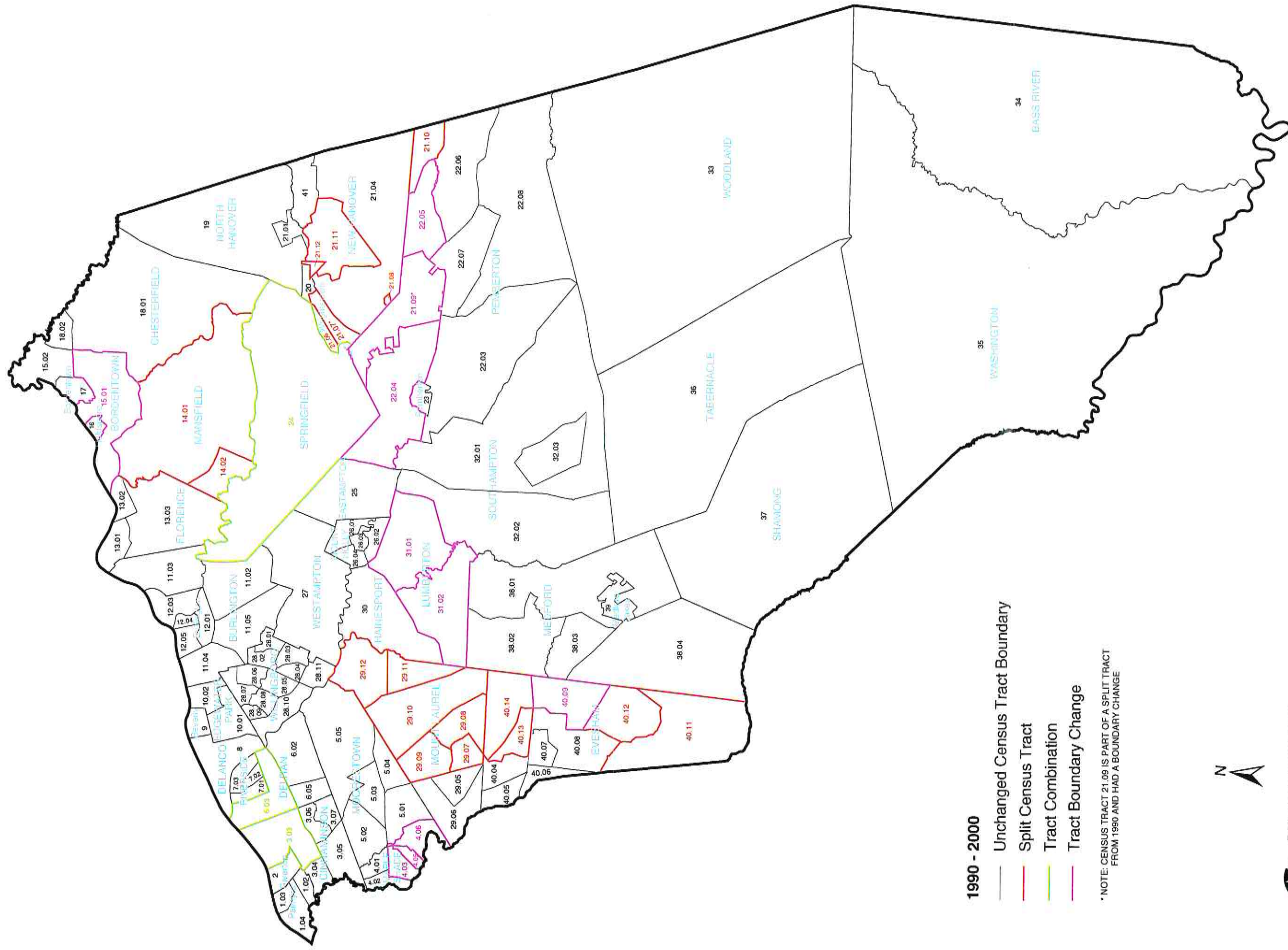
Burlington County	
1990	2000
34005 7004.05	34005 7004.03
	34005 7004.06
34005 7014	34005 7015.01
34005 7021.05	34005 7022.05
34005 7022.04	34005 7021.09
34005 7031.01	34005 7031.02
34005 7031.02	34005 7031.01
34005 7040.03	34005 7040.09

Gloucester County	
1990	2000
34015 5011.05	34015 5009
34015 5012.98	34015 5012.09
34015 5013.02	34015 5013.03
34015 5025	34015 5012.01

Camden County	
1990	2000
34007 6001	34007 6003
	34007 6006
34007 6006	34007 6005
34007 6014	34007 6002
34007 6039.01	34007 6039.02
34007 6050	34007 6049
34007 6051	34007 6049
34007 6069.01	34007 6069.02
34007 6083.01	34007 6082.07
34007 6101	34007 6029.01
34007 6102	34007 6050
	34007 6053

Mercer County	
1990	2000
34021 11	34021 12
34021 12	34021 11
34021 18	34021 19
34021 24	34021 8
34021 42.01	34021 42.04

2000 CENSUS TRACTS BURLINGTON COUNTY



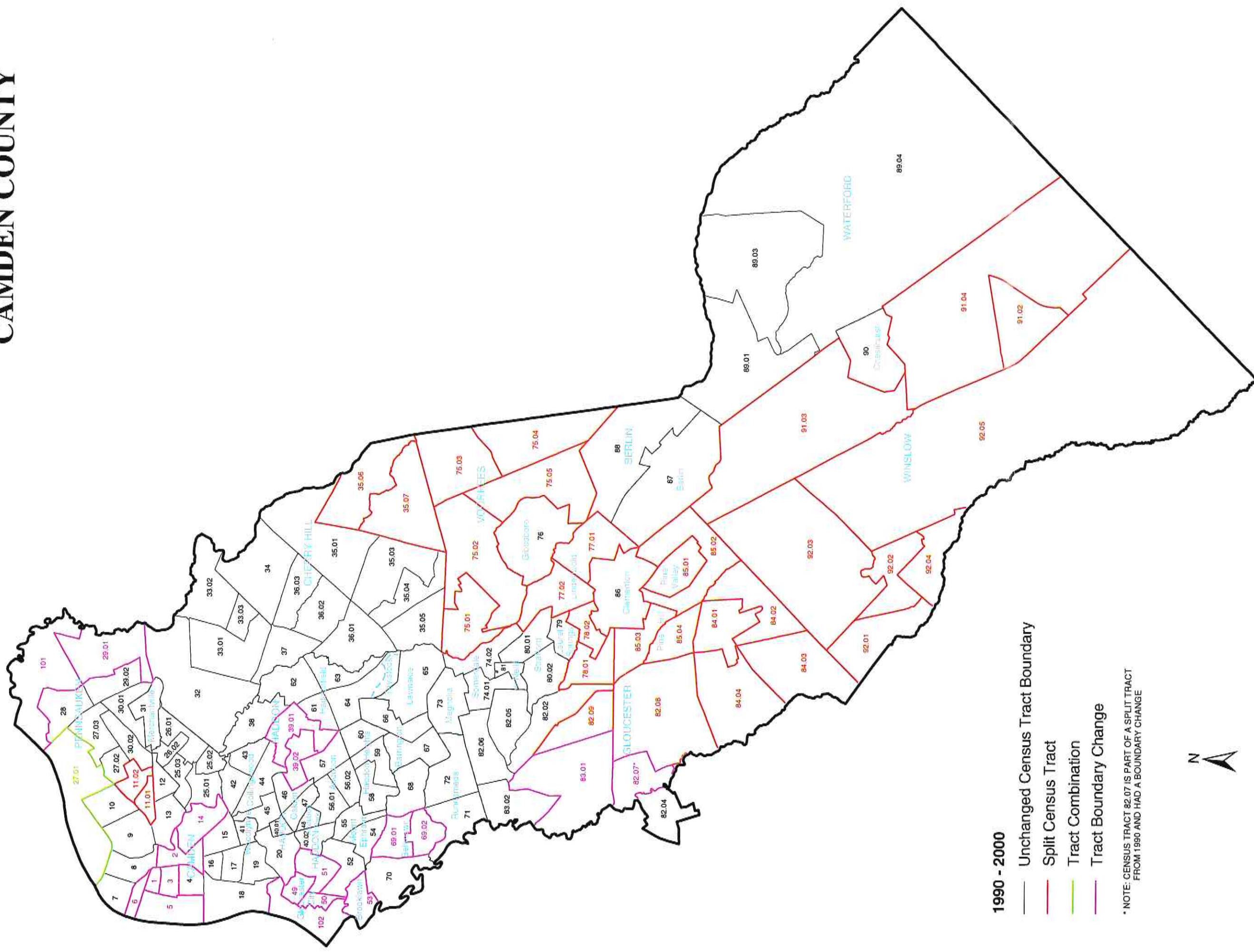
1990 - 2000

- Unchanged Census Tract Boundary
- Split Census Tract
- Tract Combination
- Tract Boundary Change

* NOTE: CENSUS TRACT 21.09 IS PART OF A SPLIT TRACT FROM 1990 AND HAD A BOUNDARY CHANGE



2000 CENSUS TRACTS CAMDEN COUNTY



1990 - 2000

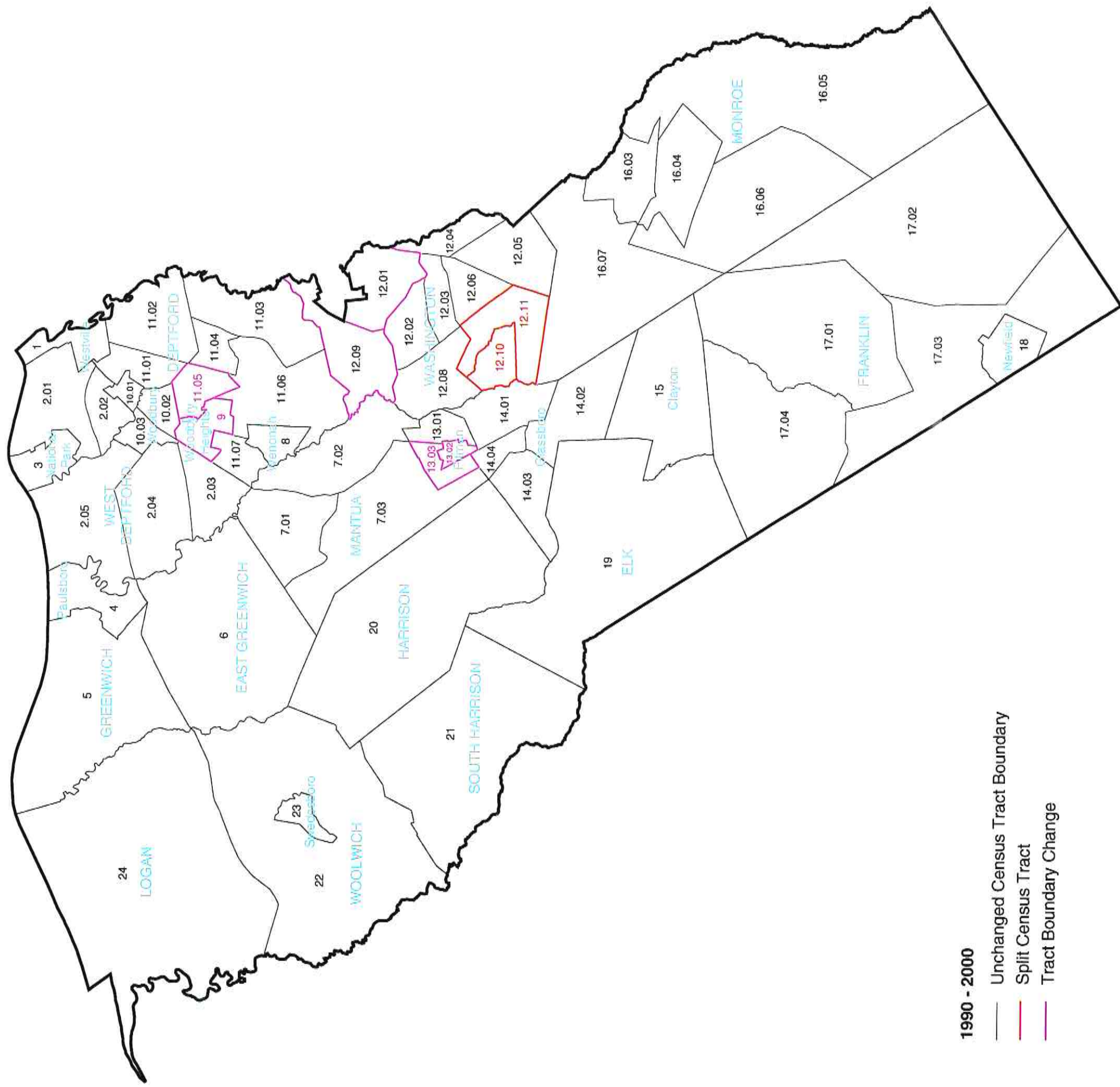
- Unchanged Census Tract Boundary
- Split Census Tract
- Tract Combination
- Tract Boundary Change

* NOTE: CENSUS TRACT 82.07 IS PART OF A SPLIT TRACT FROM 1990 AND HAD A BOUNDARY CHANGE



DELAWARE VALLEY
REGIONAL PLANNING COMMISSION
MAY 2003

2000 CENSUS TRACTS GLOUCESTER COUNTY



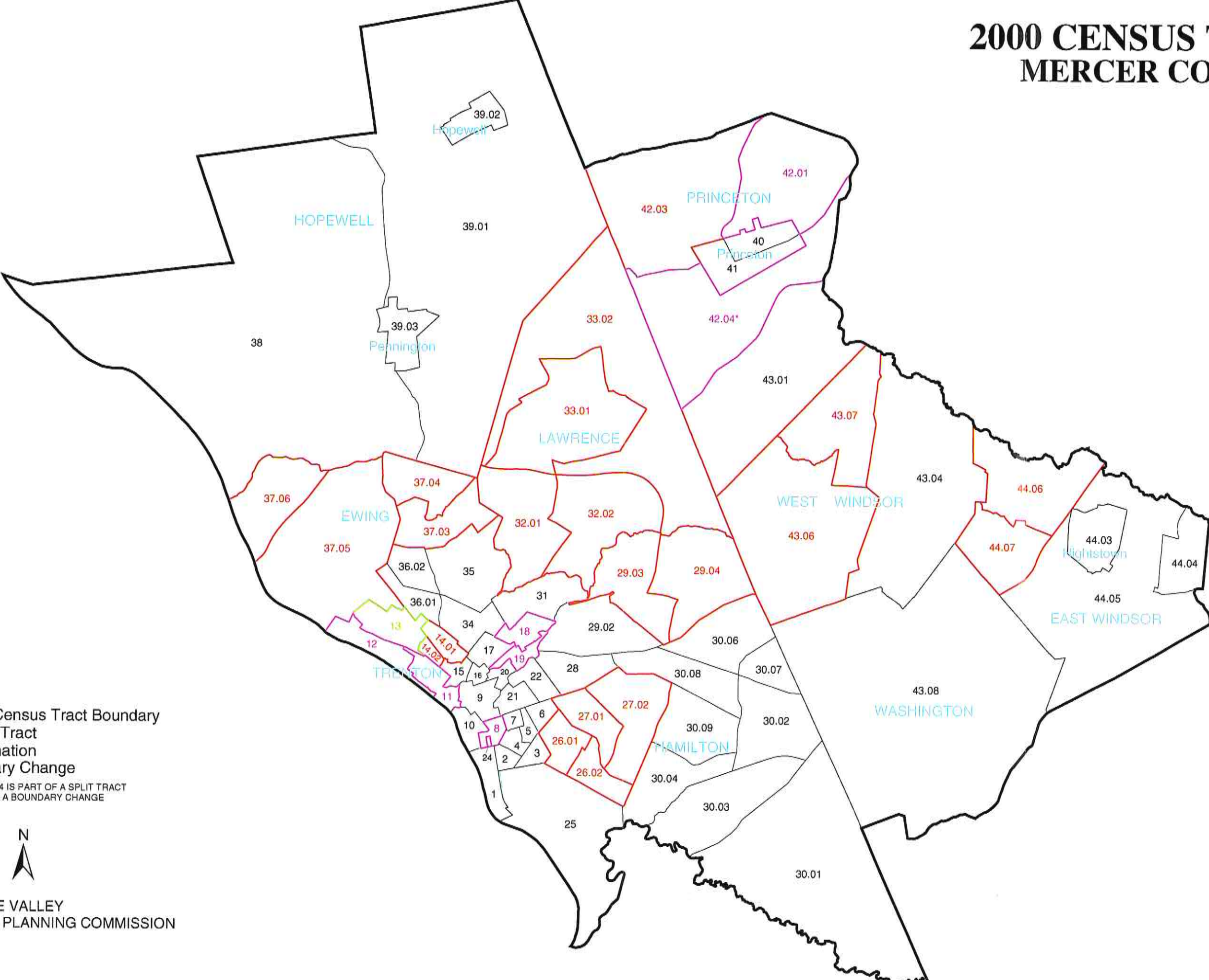
1990 - 2000

- Unchanged Census Tract Boundary
- Split Census Tract
- Tract Boundary Change



DELAWARE VALLEY
REGIONAL PLANNING COMMISSION
MAY 2003

2000 CENSUS TRACTS MERCER COUNTY

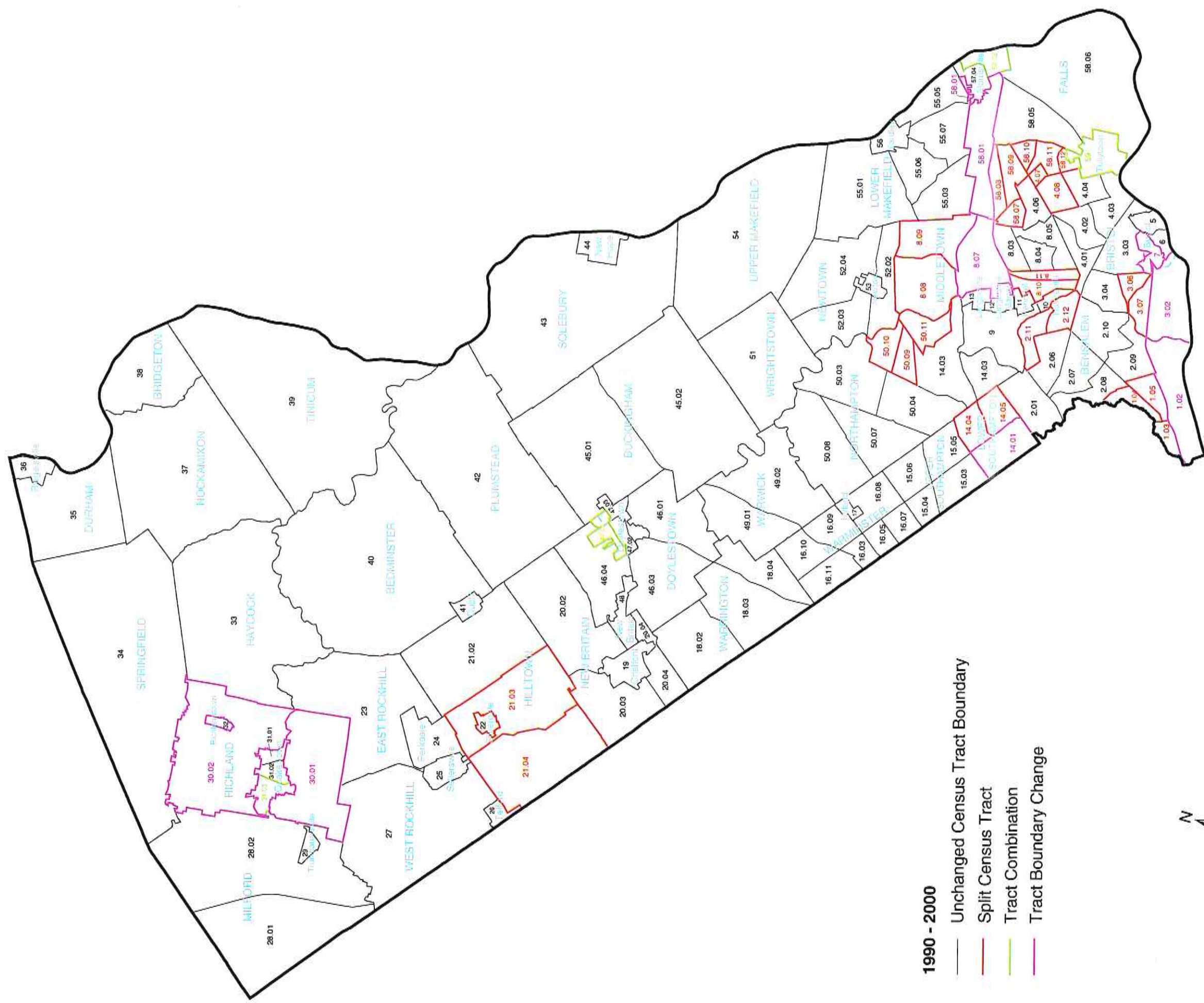


- 1990 - 2000**
- Unchanged Census Tract Boundary
 - Split Census Tract
 - Tract Combination
 - Tract Boundary Change

* NOTE: CENSUS TRACT 42.04 IS PART OF A SPLIT TRACT FROM 1990 AND HAD A BOUNDARY CHANGE



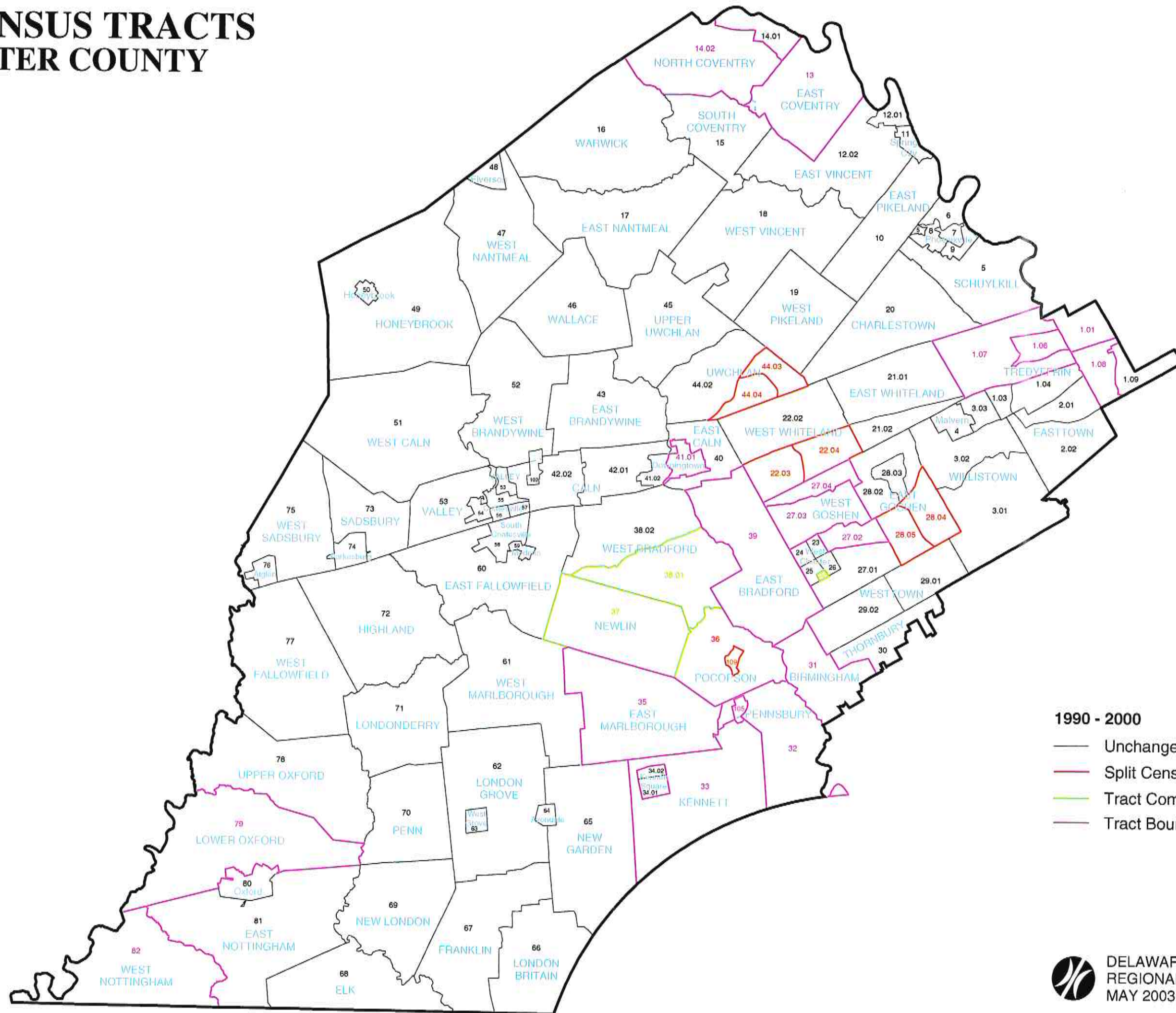
2000 CENSUS TRACTS BUCKS COUNTY



- 1990 - 2000**
- Unchanged Census Tract Boundary
 - Split Census Tract
 - Tract Combination
 - Tract Boundary Change



2000 CENSUS TRACTS CHESTER COUNTY



1990 - 2000

- Unchanged Census Tract Boundary
- Split Census Tract
- Tract Combination
- Tract Boundary Change

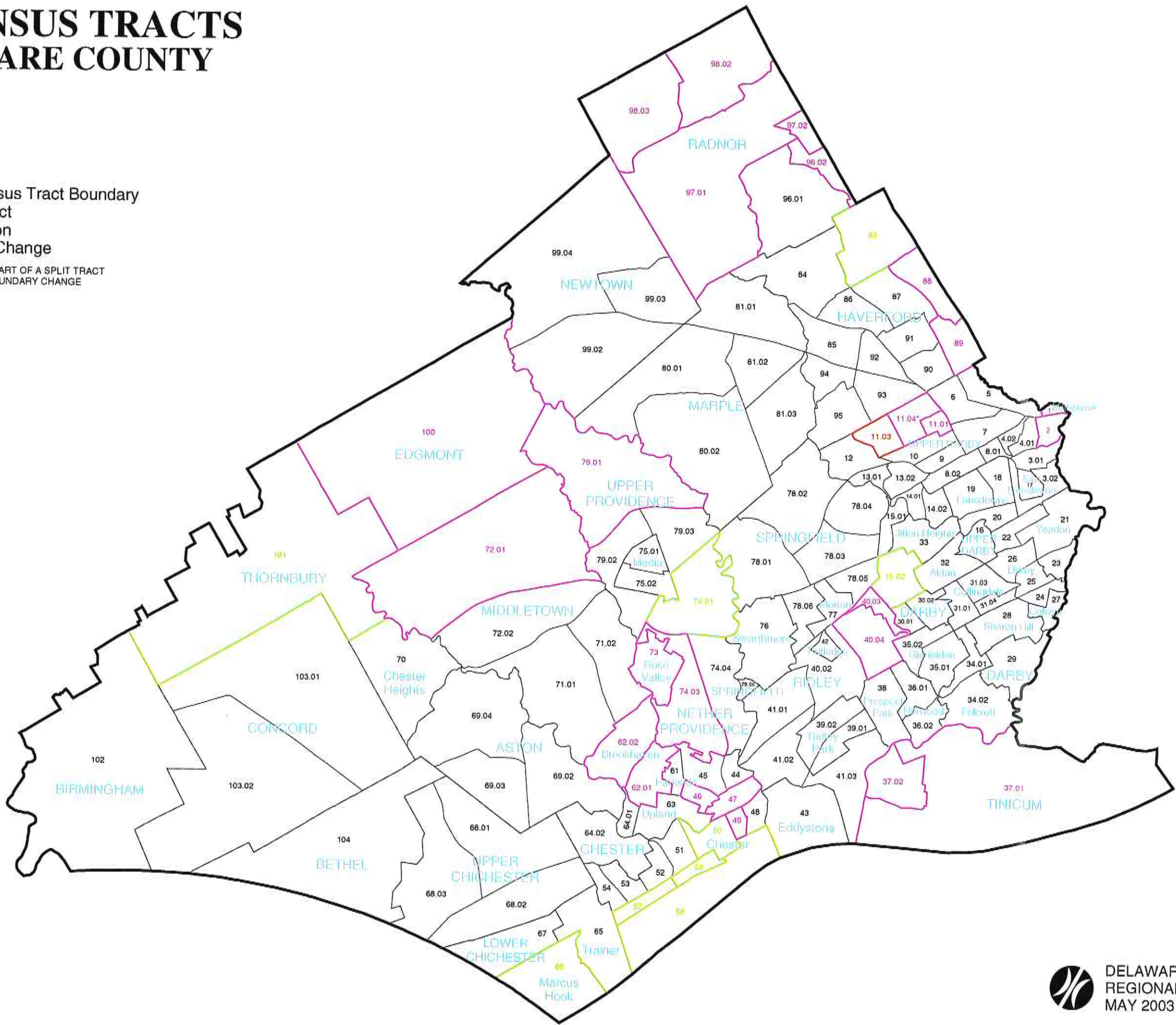


2000 CENSUS TRACTS DELAWARE COUNTY

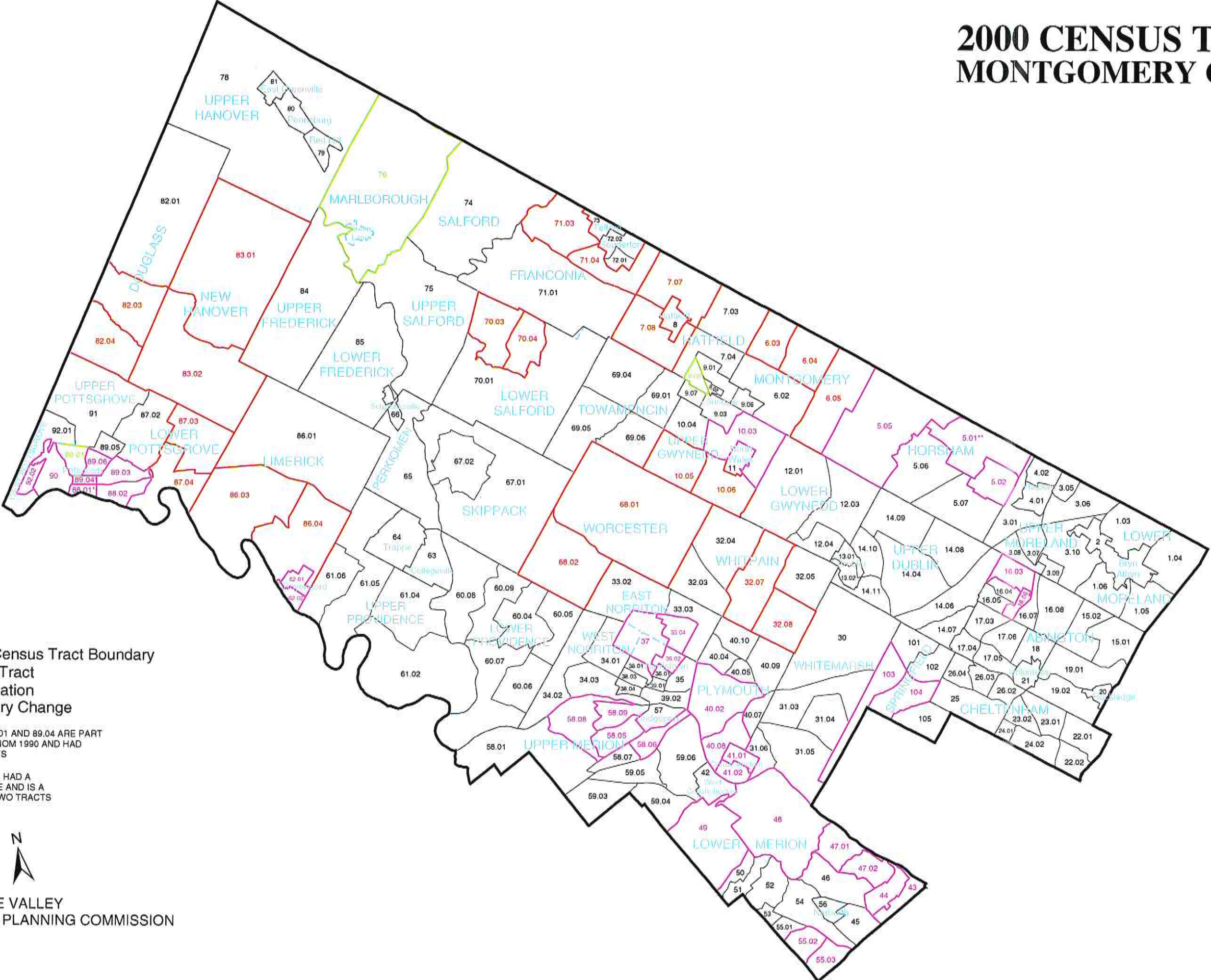
1990 - 2000

- Unchanged Census Tract Boundary
- Split Census Tract
- Tract Combination
- Tract Boundary Change

* NOTE: CENSUS TRACT 11.04 IS PART OF A SPLIT TRACT FROM 1990 AND HAD A BOUNDARY CHANGE



2000 CENSUS TRACTS MONTGOMERY COUNTY



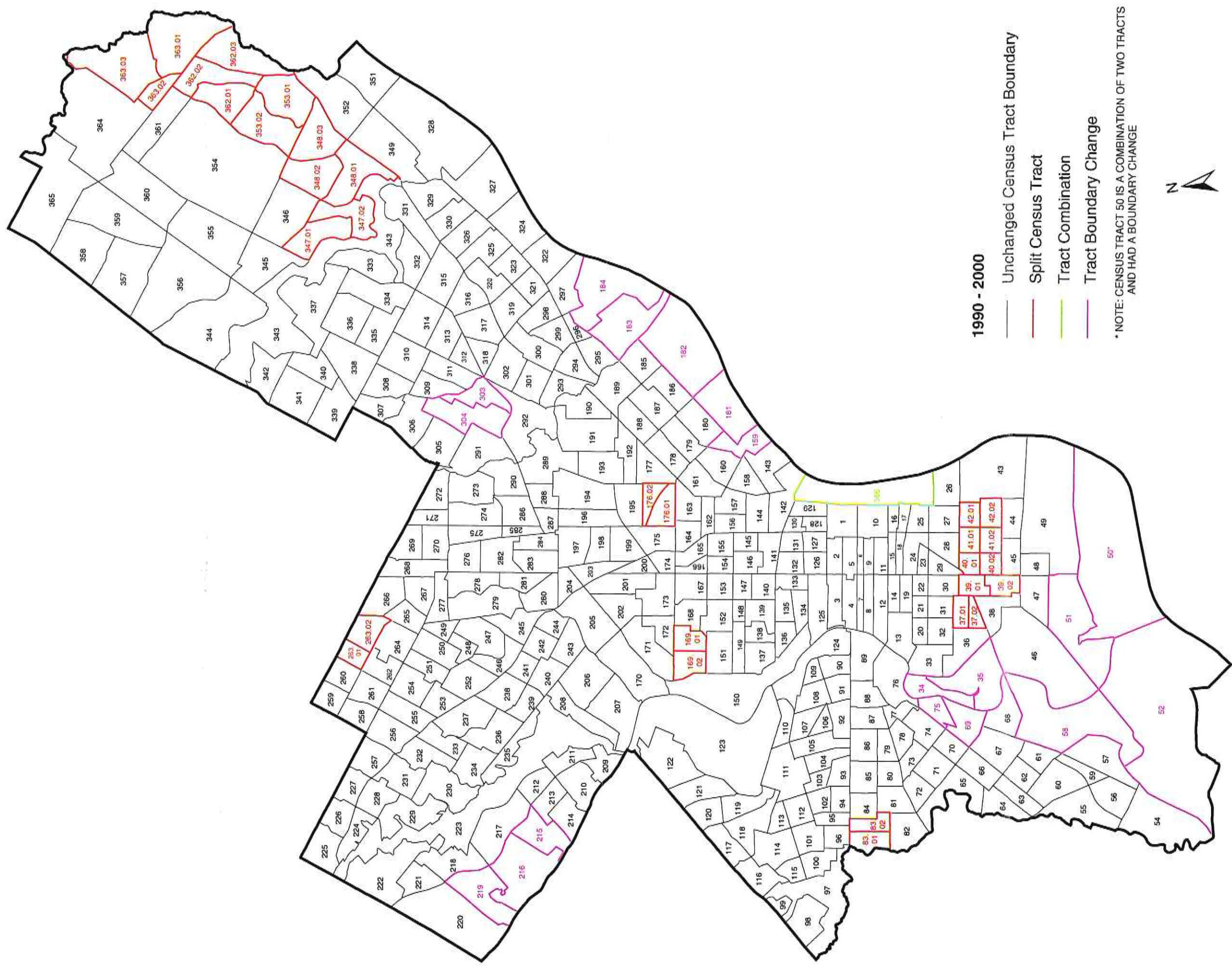
1990 - 2000
 — Unchanged Census Tract Boundary
 — Split Census Tract
 — Tract Combination
 — Tract Boundary Change

* NOTE: CENSUS TRACTS 88.01 AND 89.04 ARE PART OF SPLIT TRACTS FROM 1990 AND HAD BOUNDARY CHANGES

** NOTE: CENSUS TRACT 5.01 HAD A BOUNDARY CHANGE AND IS A COMBINATION OF TWO TRACTS



2000 CENSUS TRACTS PHILADELPHIA COUNTY



DELAWARE VALLEY
REGIONAL PLANNING COMMISSION
MAY 2003

Data reference guide #8 is the eighth in a series of guides designed to complement our traditional data releases by explaining specific data sources and methodologies. For more information on Data Reference Guides as well as Analytical Reports and traditional Data Bulletins, please visit the Delaware Valley Regional Planning Commission's website (www.dvrpc.org) or contact DVRPC at the telephone number below.

The Delaware Valley Regional Planning Commission was established in 1965 by interstate compact between Pennsylvania and New Jersey to plan for the orderly growth and development of the region, and to provide a variety of planning and technical assistance services responding to regional issues. DVRPC maintains a significant database for twenty-eight counties encompassing New Jersey, Delaware, Pennsylvania and Maryland. Included in the database are data profiles at the regional, county and municipal level and for other census geography as requested. DVRPC produces a diverse range of services, including demographic and economic data and projections; mapping and aerial photography; computer assisted mapping; geographic information systems; impact studies; and policy and program development.

Delaware Valley Regional Planning Commission
The Bourse Building - 8th Floor
111 South Independence Mall East
Philadelphia, Pennsylvania 19106-2515
215-592-1800
www.dvrpc.org

