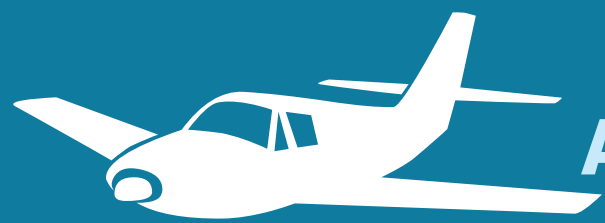


**N87
2020**

DELAWARE VALLEY
dvrpc
REGIONAL
PLANNING COMMISSION

MAY 2023

N87—TRENTON-ROBBINSVILLE AIRPORT



2020 AIRCRAFT OPERATIONS COUNTING PROGRAM



The Delaware Valley Regional Planning Commission (DVRPC) is the federally designated Metropolitan Planning Organization for a diverse nine-county region in two states: Bucks, Chester, Delaware, Montgomery, and Philadelphia in Pennsylvania; and Burlington, Camden, Gloucester, and Mercer in New Jersey. The DVRPC Regional Aviation System Plan Region includes three additional counties: Salem in New Jersey, New Castle in Delaware, and Cecil in Maryland.

DVRPC's vision for the Greater Philadelphia region is a prosperous, innovative, equitable, resilient, and sustainable region that increases mobility choices by investing in a safe and modern transportation system; that protects and preserves our natural resources while creating healthy communities; and that fosters greater opportunities for all.

DVRPC's mission is to achieve this vision by convening the widest array of partners to inform and facilitate data-driven decision making. We are engaged across the region and strive to be leaders and innovators, exploring new ideas and creating best practices.

Aircraft Operations Counting Program

The Delaware Valley Regional Planning Commission (DVRPC) has conducted aircraft operations counts at the non-towered airports in the 12-county, four-state Delaware Valley Regional Airport System Plan area (RASP) since 1986. Aircraft operations counts and annual estimates of activity are essential for planning and programming of airport improvements. Reliable operations data at airport facilities provides a basis for service provision and future activity forecasting. While towered airports generally have access to this information through air traffic controllers, the general aviation and reliever airports, that make up the majority of facilities in the region, rely primarily on estimates for their traffic data.

DVRPC's cyclical aircraft operations counting program focuses on the counting of non-towered National Plan of Integrated Airport Systems (NPIAS) airports and is made possible by funding through the Federal Aviation Administration (FAA). The regional NPIAS airports are counted in a three-year program. The resulting aviation operations data created from these annual counting cycles provides facility level details on based aircraft; estimated average daily, seasonal, and annual fixed-wing operations; and helicopter activity estimates.

The complete program methodology is documented in *Aircraft Operations Counting Program Methodology (TM19018)* and additional aviation data resources are available at www.dvrpc.org/aviation.

Acknowledgments:

This report is funded by the U.S. Department of Transportation, Federal Aviation Administration, Harrisburg Airports District Office (HARADO), under Award Number 3-42-0125-020-2019.

N87—Trenton-Robbinsville Airport

Robbinsville, Mercer County, New Jersey

Runway Orientation: 11/29
Runway Length: 4,275 ft.

Trenton-Robbinsville Airport is a privately-owned, public-use airport located in Robbinsville, New Jersey. The airport hosts a variety of businesses including Air-Mods and Repair, Air-Mods Academy, and KD Aviation. Collectively these businesses provide aircraft service and maintenance, painting, detailing, sales, rentals, and a flight school at the airport.

Operations during the 2020 cycle were significantly impacted by the COVID-19 pandemic.

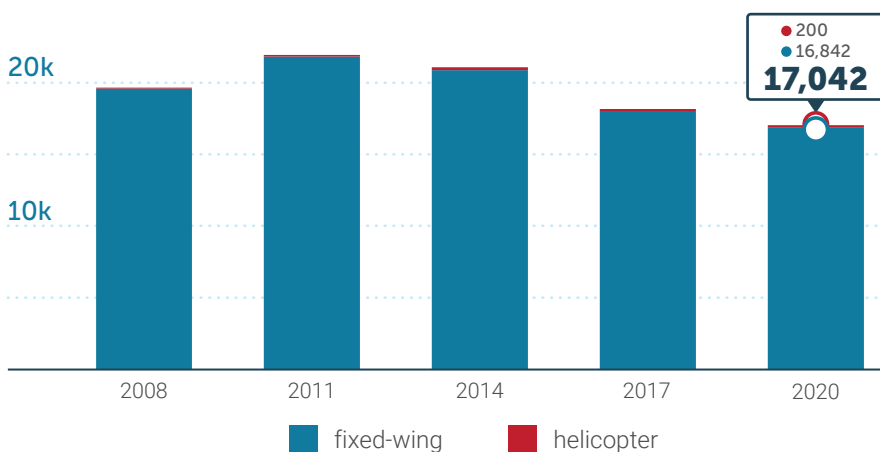


Source: Nearmap, 2022

2020 Aircraft Operations

Trenton-Robbinsville Airport had an estimated 17,042 total operations during the 2020 cycle, a 6.1 percent decrease from the previous cycle in 2017 as shown in Figure 1. Fixed-wing operations decreased by 1,116 or 6.2 percent. Helicopter operations remained unchanged.

FIGURE 1: HISTORIC AIRCRAFT OPERATIONS



17,042
2020 total operations

16,842
fixed-wing operations

200
helicopter operations

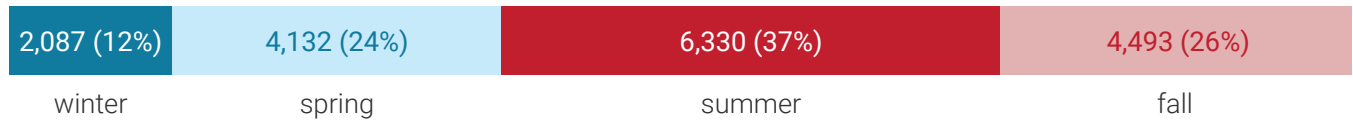
The operations estimates for the 2020 cycle continues a downward trend in activity experienced in previous count cycles.

Source: DVRPC, 2023

Seasonal Operations

Figure 2 illustrates the total seasonal operations estimated for each period during the 2020 count cycle at Trenton-Robbinsville Airport. Tables 1 and 2 show the breakdown for fixed-wing and helicopter operations by season with average daily operation estimates.

FIGURE 2: TOTAL ESTIMATED SEASONAL OPERATIONS



Source: DVRPC, 2023

TABLE 1: FIXED-WING OPERATIONS BY SEASON

SEASON	AVG. DAILY OPERATIONS	SEASONAL OPERATIONS	PERCENTAGE DAYS OBSERVED ¹
WINTER	22.4	2,037	11%
SPRING	44.9	4,082	100%
SUMMER	68.3	6,280	100%
FALL	48.3	4,443	98%

¹“Percentage days observed” is calculated based on the number of days observations were collected as a share of the total days in a given season.

Source: DVRPC, 2023

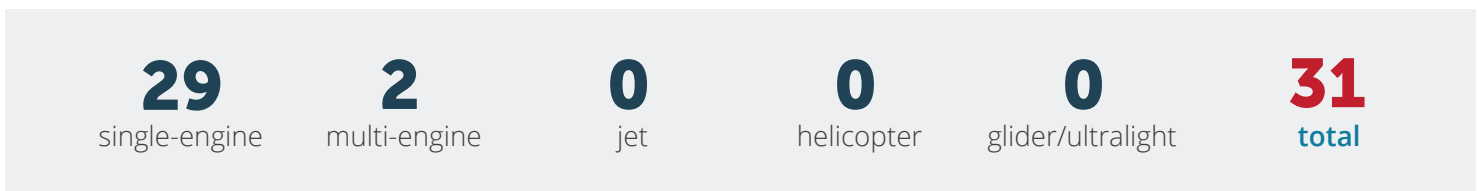
TABLE 2: HELICOPTER OPERATIONS BY SEASON

SEASON	AVG. DAILY OPERATIONS	SEASONAL OPERATIONS
WINTER	0.5	50
SPRING	0.5	50
SUMMER	0.5	50
FALL	0.5	50

Source: DVRPC, 2023

2020 Based Aircraft

Trenton-Robbinsville Airport had a reported 31 based aircraft during the 2020 count cycle. This is a decrease from the 33 based aircraft reported during the 2017 cycle.

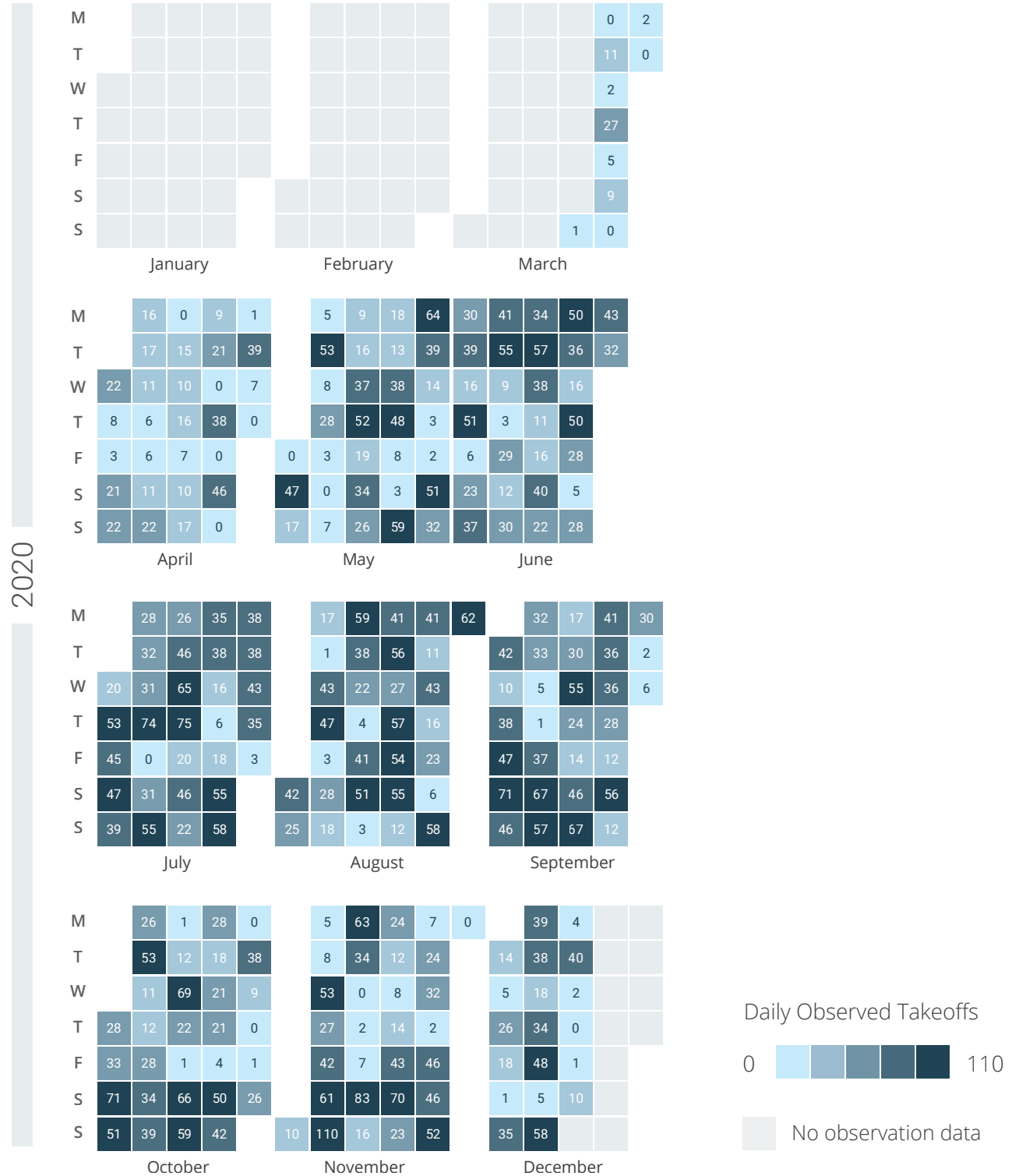


Source: FAA 5010 Master Record, 2020

Observed Daily Fixed-Wing Takeoffs

Fixed-wing operation estimates are based on takeoff events observed at Trenton-Robbinsville Airport over the course of the counting cycle. Figure 3 illustrates the daily total of observed takeoffs for each day in the counting cycle.

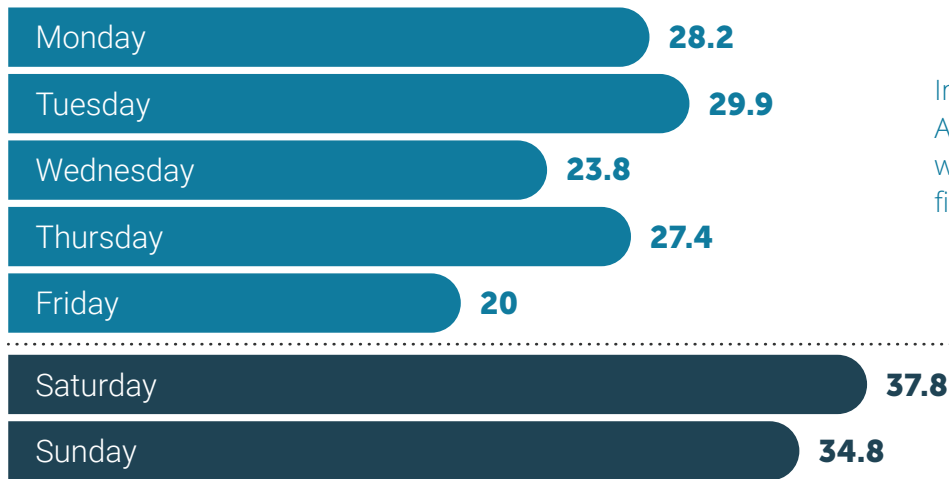
FIGURE 3: OBSERVED DAILY FIXED-WING TAKEOFFS



Fixed-Wing Takeoff Patterns

The observation data collected provides insights to the patterns of aircraft operations at Trenton-Robbinsville Airport. Utilizing the fixed-wing sample data, average daily operations by day of week can be calculated to better understand the distribution of activity throughout the week. The observed events also provide a clearer illustration of the temporal distribution of fixed-wing takeoffs throughout a typical day.

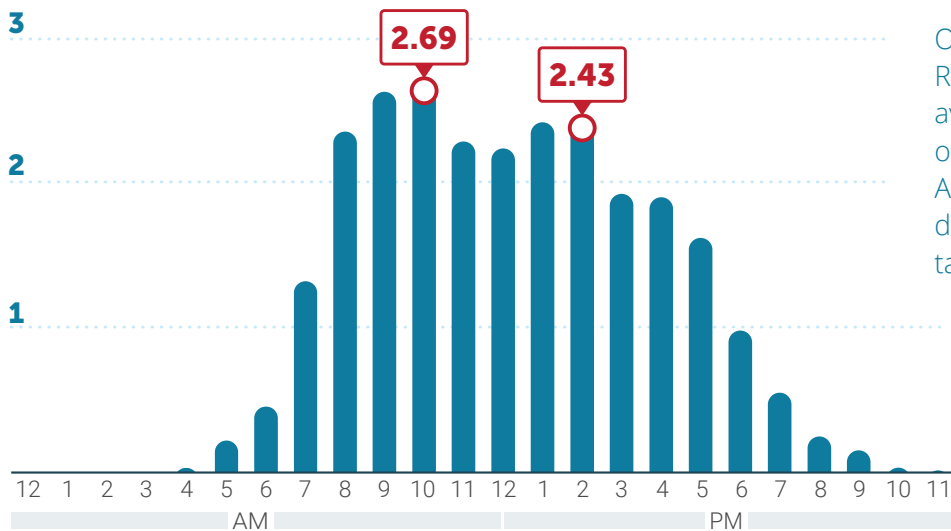
FIGURE 4: AVERAGE DAILY FIXED-WING TAKEOFFS BY DAY OF WEEK



In 2020 Trenton-Robbinsville Airport had an average of 25.9 weekday and 36.3 weekend daily fixed-wing takeoffs.

Source: DVRPC, 2023

FIGURE 5: AVERAGE FIXED-WING TAKEOFFS BY TIME OF DAY



On a typical day in 2020, Trenton-Robbinsville Airport had peak average hourly fixed-wing takeoffs of 2.69 between 10:00 and 11:00 AM. Activity throughout a typical day remained elevated above 1.5 takeoffs per hour until 6:00 PM.

Source: DVRPC, 2023

N87—Trenton-Robbinsville Airport 2020 Aircraft Operations Counting Program

PUBLICATION NUMBER 20040

PUBLISHED May 2023

GEOGRAPHIC AREA COVERED: Robbinsville,
Mercer County, New Jersey

ABSTRACT: This technical report presents aircraft operations estimates for N87—Trenton-Robbinsville Airport in Robbinsville, New Jersey. These aircraft operation estimates are a part of the cyclical regional aircraft counting program. This report is a part of the 2020 counting cycle. Acoustic counts of fixed-wing takeoffs were collected during the observation period from March 2020 through December 2020. The estimates based on these observations along with additional data collection are presented in this report. Results are used by multiple sources to monitor aircraft activity levels in the Delaware Valley and as a base for planning and forecasting documents.

STAFF CONTACT:

Michael Ruane
Associate Director, Planning Innovation
215.238.2888 | mruane@dvrpc.org



Title VI Compliance: DVRPC fully complies with Title VI of the Civil Rights Act of 1964, the Civil Rights Restoration Act of 1987, Executive Order 12898 on Environmental Justice, and related nondiscrimination mandates in all programs and activities. DVRPC's website, www.dvrpc.org, may be translated into multiple languages. Publications and other public documents can usually be made available in alternative languages and formats, if requested. DVRPC's public meetings are always held in ADA-accessible facilities, and held in transit-accessible locations whenever possible. Translation, interpretation, or other auxiliary services can be provided to individuals who submit a request at least seven days prior to a public meeting. Translation and interpretation services for DVRPC's projects, products,

and planning processes are available, generally free of charge, by calling (215) 592-1800. All requests will be accommodated to the greatest extent possible. Any person who believes they have been aggrieved by an unlawful discriminatory practice by DVRPC under Title VI has a right to file a formal complaint. Any such complaint must be in writing and filed with DVRPC's Title VI Compliance Manager and/or the appropriate state or federal agency within 180 days of the alleged discriminatory occurrence. For more information on DVRPC's Title VI program or to obtain a Title VI Complaint Form, please visit: www.dvrpc.org/GetInvolved/TitleVI, call (215) 592-1800, or email public_affairs@dvrpc.org.

DVRPC is funded through a variety of funding sources including federal grants from the U.S. Department of Transportation's Federal Highway Administration (FHWA) and Federal Transit Administration (FTA), the Pennsylvania and New Jersey departments of transportation, as well as by DVRPC's state and local member governments. The authors, however, are solely responsible for the findings and conclusions herein, which may not represent the official views or policies of the funding agencies.



190 N Independence Mall West
8th Floor
Philadelphia, PA 19106-1520
215.592.1800
www.dvrpc.org

Connect With Us!     

