

**NOW
INCLUDING
MAJOR
LAND USE
PROJECTS!**

**CENTRAL JERSEY
TRANSPORTATION
FORUM**

**PLANNED PROJECTS
STATUS REPORT**

SPRING 2009



The Delaware Valley Regional Planning Commission is dedicated to uniting the region's elected officials, planning professionals and the public with a common vision of making a great region even greater. Shaping the way we live, work and play, DVRPC builds consensus on improving transportation, promoting smart growth, protecting the environment, and enhancing the economy. We serve a diverse region of nine counties: Bucks, Chester, Delaware, Montgomery and Philadelphia in Pennsylvania; and Burlington, Camden, Gloucester and Mercer in New Jersey. DVRPC is the federally designated Metropolitan Planning Organization for the Greater Philadelphia Region — leading the way to a better future.

The symbol in our logo is adapted from the official DVRPC seal, and is designed as a stylized image of the Delaware Valley. The outer ring symbolizes the region as a whole. The diagonal line represents the Delaware River and the two adjoining crescents represent the Commonwealth of Pennsylvania and the State of New Jersey.

DVRPC is funded by a variety of funding sources including federal grants from the U.S. Department of Transportation's Federal Highway Administration (FHWA) and Federal Transit Administration (FTA), the Pennsylvania and New Jersey departments of transportation, as well as by DVRPC's state and local member governments. The authors, however, are solely responsible for the findings and conclusions herein, which may not represent the official views or policies of the funding agencies.

DVRPC fully complies with Title VI of the Civil Rights Act of 1964 and related statutes and regulations in all programs and activities. DVRPC's website may be translated into Spanish, Russian and Traditional Chinese online by visiting www.dvrpc.org. Publications and other public documents can be made available in alternative languages and formats, if requested. For more information, please call (215) 238-2871.

TABLE OF CONTENTS

I.	How do the Projects in Central Jersey Add up?	1
	Contents of Report	1
	Transportation and Land Use	2
	Transportation Project Summary	3
	FY 2009-2012 TIP for New Jersey	5
	American Reinvestment and Recovery Act of 2009 (ARRA)	7
	NJDOT Project Development Process	8
	Detailed Phase List for NJDOT Projects	10
	Transportation Funding Sources	11
II.	Transportation Projects in Central Jersey	13
	<i>TIP-Highway Projects</i>	13
	<i>NJ Turnpike Authority Projects</i>	45
	<i>Transit TIP Projects</i>	49
	TIP – Potential Projects (Study and Development)	57
	Projects Identified by Participants in the Route 1 Regional Growth Strategy (R1RGS) Effort	61
	Index of Projects by Database Number (DBNUM)	67
III.	Major Development Projects in the US 1 Corridor	69
	Overview of Projects	69
	Relevant Studies and Policy Documents	70
Tables		
	Table 1: Types of Projects	3
	Table 2: Projects Addressing the Forum's East-West Regional Access Goals	4
	Table 3: Pipeline 4 Projects	4
	Table 4: Projects Removed from the FY 2009-2012 TIP for New Jersey	5
	Table 5: Capital Projects Added in the FY 2009-2012 TIP for New Jersey	5
	Table 6: Study & Development Program Updates	6
	Table 7: "Tier 2" Projects in the Forum Area	7
	Table 8: Highway Projects Funded by the ARRA	7
	Table 9: Range of Phases and Abbreviations	10
	Table 10: Funding Sources and Abbreviations	11
	Table 11: TIP – Potential Projects (Study and Development)	57
	Table 12: R1RGS Municipal Transportation Project Status Updates	61
	Table 13: Proposed Road Projects in the Forum Area	62
	Table 14: Index of Projects	67
	Table 15: Summary of Major Development Projects	73
Figures		
	Figure 1: Planned Projects	65
	Figure 2: Development and Transportation Projects on US 1	71

How do the Projects in Central Jersey Add up?

Contents of Report

The *Planned Projects Status Report* has regularly provided information on programmed transportation projects in Central New Jersey for over seven years. It has covered projects that are listed in Transportation Improvement Programs (TIPs) for the Delaware Valley Regional Planning Commission (DVRPC) and North Jersey Transportation Planning Authority (NJTPA).

The *Planned Projects Status Report* continues to evolve to better assist the Central Jersey Transportation Forum (Forum) in reaching its adopted goals. Ideas on how to make this a more useful publication are always welcome. Some features that have been added over the last three years are:

- Timely features such as a summary of transportation projects in Central Jersey funded by the American Recovery and Reinvestment Act of 2009.
- Major land use projects in the vicinity of US 1. This includes projects that have been proposed, are being planned, are under construction, or were recently completed by public or private entities.
- Tables explaining additions and deletions since the previous edition.
- Analysis of what this full set of projects means.
- More focus on “real” projects - Full page descriptions are only included for projects that have progressed into the NJDOT Capital Program. Projects that are still in Study and Development are listed in a table, “TIP - Potential Projects (Study and Development).”
- Major transportation projects not in a TIP are invited for inclusion.

The municipalities included in the Central Jersey Transportation Forum are:

Hunterdon County

East Amwell Township

Mercer County

East Windsor Township

Hightstown Borough

Hopewell Borough

Hopewell Township

Lawrence Township

Pennington Borough

Princeton Borough

Princeton Township

Robbinsville Township

West Windsor Township

Middlesex County

Cranbury Township

Jamesburg Borough

Monroe Township

Plainsboro Township

South Brunswick Township

Somerset County

Franklin Township

Hillsborough Township

Millstone Borough

Montgomery Township

Rocky Hill Borough

Transportation and Land Use

The communities in the Central Jersey Transportation Forum region are diverse and growing. As population increases and other demographics change, land use decisions become more complex. Because multiple factors influence these decisions, linking land use and transportation projects can facilitate better decision making at both the local and regional level. The land use portion of the *Planned Projects Status Report* (Section III) is included to support discussions within and among Forum municipalities and to encourage a multi-disciplinary approach to development decisions.

Section III of this report contains information concerning development projects proposed, or recently completed by public or private entities in the vicinity of US 1, covering activity from June 2008 to March 2009. Projects are arranged by municipality and are listed in one of the following four categories:

1. **Planning** – The project has not yet completed a final review stage. The project may have had some review or may be just speculative at this time.
2. **Approved** – These projects have had a final review and construction may have started but construction was not verified.
3. **Under Construction** – Projects that are currently being built.
4. **Complete** – Construction is now complete and the project is ‘open.’

As noted, some of the projects with a status of “planning” have not yet been submitted for review, but are important to mention to assist with proactive planning.

Compared to the Spring 2008 version of this report, many of the development projects have remained in the same stage. Although most projects noted are in the planning stages, several have advanced closer to final approval and construction. There are also several communities within the Forum area that are exploring developments around transit stations along the Northeast Corridor. Because of the scope and breadth of these projects, they are largely still in planning stages. Additionally, 14 new developments that are expected to affect transportation along US 1 were added to the development project spreadsheet this year. This is in addition to countless other small scale projects that are in various stages of development.

Information was assembled from local newspapers and various websites. Full references or copies of the articles are available upon request. DVRPC staff also relied on development information gained through a survey of local communities administered by a consultant for the NJDOT Route 1 Regional Growth Strategy effort.

The draft spreadsheet, listing development projects likely to affect US 1, was provided to municipalities and counties for comment or additional updates. The summary included in this report covers activity from June 2008 to March 2009. This information will also be posted on the DVRPC web page for the Forum, www.dvrpc.org/LongRangePlan/CentralJerseyForum.

Transportation Project Summary

The projects described in this report are the responsibility of a wide range of agencies. These include the New Jersey Department of Transportation (NJDOT), New Jersey Transit, the New Jersey Turnpike Authority, and county and municipal transportation projects being completed with federal dollars.

This report is prepared for general information purposes only. To obtain more details about a specific project, please contact the project's sponsor, NJDOT, or the capital programming staff of DVRPC or NJTPA.¹ Information is also available at each MPO's website.² Being listed in a TIP is a required step for a project to be funded, but is not a guarantee of funding. This report covers projects from the TIPs in effect as of March 2009.

The FY 2009-2012 TIPs for DVRPC and NJTPA include 26 projects in the Central Jersey region in the Capital Program. Detailed information including project descriptions and programmed funding is provided in this report for each of these projects. These projects represent an investment of approximately \$550 million dollars of road and bridge funds over the TIP years. Transit projects are not included in this total because they cover a broader area than just the Forum. The New Jersey Turnpike widening project is also not included as it is the work of an independent authority.

Table 1 and **Table 2** illustrate how these projects distribute overall transportation investments and opportunities across Central New Jersey. Developing an overview of the types of investments underway in the region helps to set individual projects in a broader context. In **Table 1**, projects are sorted by their primary type of improvement. Naturally, there is more than one way to categorize projects. Bridges, for example, could also be considered roadway improvement projects. In this case bridges are a separate category because they are evaluated according to specific functional and structural criteria. As detailed below, bridge improvements account for about one-third of Central New Jersey's TIP projects, making them the most common project type in the region. Projects that focus on major roadway improvements are the third most common type, after projects to improve transit.

Table 1: Types of Projects

General Type	# of Projects
Bicyclist and Pedestrian Facilities	2
Bridges	12
Intersection/Safety	3
Roadway Improvement	8
Transit	9
Other - drainage, scenic byway, wetland preservation, etc.	1
Total	35

Source: FY 2009-2012 TIP for New Jersey

¹ DVRPC: Contact Elizabeth Schoonmaker, Manager, Office of Capital Programs (215-238-2938); NJTPA: Contact Martin Hofler, Director, Capital Programming/Project Development (973-639-8405); NJDOT: Contact Project Planning and Development (609-530-8076)

² DVRPC: www.dvrpc.org/TIP; NJTPA: www.njtpa.org/Project/TIP/Default.aspx

In 2004, the Forum adopted an updated action plan in which improving east-west access in the region is one of its two top priorities. **Table 2** highlights the current projects that address east-west access in Central New Jersey. Bridge projects are not included because the improvement of regional access is generally not their primary goal.

Table 2: Projects Addressing the Forum's East-West Regional Access Goals

Project Name	General Type
NJ 31, Pennington Circle Safety Improvements	Intersection/Safety
US 130 Pedestrian Bridge	Bicyclist and Pedestrian Facilities
Plainsboro Traffic Calming Project	Roadway Improvement

Note: All the transit projects contain components that improve east-west access

Source: FY 2009-2012 TIP for New Jersey

NJDOT has developed four different pipelines that a project can follow as it moves toward final design and construction. Pipeline 4 projects are of a nature that can advance from problem statements directly (or with modest Final Design) to a NJDOT maintenance contract for completion. They tend to advance faster than projects in the other pipelines and usually represent lower cost, productive means to pursue solutions where appropriate. NJDOT has expressed interest in hearing more about solid projects to consider for this pipeline. For more information on the pipeline process, see “NJDOT Project Development Process” (page 8) or contact NJDOT. **Table 3** lists Pipeline 4 projects for the Forum area. To obtain more details about a specific project, please contact the project's sponsor, NJDOT, or the capital programming staff of DVRPC or NJTPA.

Table 3: Pipeline 4 Projects

Project Name	DBNUM*	Notes
NJ 29, Scenic Byway Improvements, Signage	00362L1	
NJ 29, Washington Crossing Road, Operational Improvements (CR 546)	04341	Under Construction
NJ 32, Eastbound Park and Ride	05324	
NJ 32 / US 130, Friendship Road	05323	
NJ 33, Bentley Brook, Drainage Improvements	93247	
US 1, Franklin Corner Road/Bakers Basin Road, Interim Improvements	027A	
US 1, Franklin Corner Road/Bakers Basin Road, Pedestrian Improvements	04372	
US 1, Quakerbridge Road Area Interim Operational and Safety Improvements	01329	Construction Complete
US 1, Ridge Road, Drainage Improvements (CR 522)	98417	Withdrawn (Replaced by DBNUM 93253. See Table 6 and Table 11.)
US 130, Georges Road (CR 679)	05326	
US 130, South River/Cranbury Road (CR 535)	05325	
US 130/ NJ 133, East Windsor Pedestrian Improvements	00359	
US 130, Old Trenton Road	05322	

Source: FY 2009-2012 TIP for New Jersey

*NJDOT Database Number

FY 2009-2012 TIP for New Jersey

In addition to information about projects in the current TIP, this report also tracks change over time. Four projects in the Forum area were removed from the TIP since the Spring 2008 report. Seven new Capital Program TIP projects totaling \$325 million were added since the last report. For more information about projects removed and added to the TIP, see **Table 4** and **Table 5** below. Since the Spring 2008 edition of the Planned Projects Status Report issued in May 2008, the **FY 2009-2012 TIP for New Jersey** has been completed. Included below is a summary of Capital Program projects in the Forum area that have been dropped or added since the last TIP update, according to information available in mid-March. **Table 6** summarizes updates to projects in the Study and Development program for the Forum area.

Table 4: Projects Removed from the FY 2009-2012 TIP for New Jersey

Project Name	DBNUM*	Reason
CR 514, Amwell Road Bridge over the Neshanic River	L002	Contract Awarded 11/5/08
CR 606, Studdiford Drive Bridge over South Branch of Raritan River, Replacement	NS0411	Contract Awarded 6/3/08
I-95, Noise Barriers, Lawrence Township	94010A	Terminated by NJDOT Capital Program Screening Committee. (Resurfacing project in the area used noise reducing pavement.)
US 206, Arretton Road, Drainage Improvements	98423	Contract Awarded 6/5/08

Source: FY 2009-2012 TIP for New Jersey

*NJDOT Database Number

Table 5: Capital Projects Added in the FY 2009-2012 TIP for New Jersey

Project Name	DBNUM*	Cost (in millions)
CR 602, Camp Meeting Avenue Bridge over Trenton Line	99405	\$6.25
NJ 31, Pennington Circle Safety Improvements	159A	\$4.2
US 1, Bottleneck Relief	08417	\$295
US 1, Brunswick Circle to Texas Avenue	04316	\$4.1
US 1, Heathcote Brook Bridge	08357	\$4
US 206, Stony Brook Bridges	326	\$6.799
Hillsborough Road and Homestead Road Bridges	08375	\$4
Plainsboro Traffic Calming Project	09348	\$0.7

Source: FY 2009-2012 TIP for New Jersey

*NJDOT Database Number

Table 6: Study & Development Program Updates

Project Name	DBNUM*	Status Update
NJ 31, Bridge Over CSX Railroad	08355	Added to FY 2009-2010 SD Program
US 1, Middlesex County Operational Improvements	93146A	Added to FY 2009-2010 SD Program; Accelerated Concept Development requested by Commissioner Dilts
US 1 Business, Brunswick Circle to Texas Avenue	04316	Graduated from SD Program to Capital Projects in FY 2009-2012 Capital Program
US 1, South Brunswick, Drainage Improvements	93253	Added to FY 2009-2010 SD Program
US 206, Hillsborough-Montgomery Gateway	08351	Added to FY 2009-2010 SD Program
US 206, North of Quaker Road, Drainage Improvements	04319	Placed on Tier 2 SD Program list
US 206, Stony Brook Bridges	326	Graduated from SD Program to Capital Projects in FY 2009-2012 Capital Program
Hillsborough Road Bridge	00330	Withdrawn – Subsumed in DBNUM 08375 (Table 5)
Homestead Road Bridge	00331	Withdrawn – Subsumed in DBNUM 08375 (Table 5)

Source: FY 2009-2012 TIP for New Jersey; www.njtpa.org/project/NOTIS/Default.aspx

*NJDOT Database Number

“Tier 2” Projects

In an effort to address the reality that road, highway, bridge, and transit projects often take longer than four years to bring to fruition, NJDOT transitioned to a ten-year capital program beginning in fiscal year 2009. NJDOT has established a list of “Tier 2” projects in recognition of the fact that given current economic conditions, there are simply not enough resources to fund every project in the pipeline, even over a ten-year period. Projects selected for “Tier 2” status are those that cannot be funded based on current ten-year revenue estimates. However, if additional state or federal funds become available, these “Tier 2” projects could be funded within NJDOT’s Ten-Year Capital Plan.

In development of the FY 2009-2012 TIP, several projects were moved to the “Tier 2” list and are therefore no longer funded in the TIP. This does not mean that these projects will never be realized. However, it does suggest that creative partnerships and funding solutions will be required for “Tier 2” projects to be built in the near future. Some categories of projects will be affected more than others. For example, bridge projects are a high priority for transportation improvement funding at present and are less likely to be placed on the “Tier 2” list. Anyone who wishes to participate in the TIP development process may contact DVRPC, NJTPA, or NJDOT (see footnote on page 3). **Table 7** summarizes projects in the Forum area that have been placed on the “Tier 2” list.

Table 7: "Tier 2" Projects in the Forum Area

Project Name	DBNUM*	Cost (in millions)
US 1, Penns Neck Improvements	031	\$201.75
Vaughn Drive Connector	031B	\$38.684
US 206, North of Cherry Hill Road, Drainage Improvements	04318	\$2
US 206, North of Quaker Road, Drainage Improvements	04319	\$2.8
US 206, Old Somerville Road to Brown Avenue (15N)	780	\$96.791

Source: FY 2009-2012 TIP for New Jersey

*NJDOT Database Number

American Recovery and Reinvestment Act of 2009 (ARRA)

The American Recovery and Reinvestment Act of 2009 was signed into law on February 17, 2009. The legislation will provide approximately \$32 million in additional highway funds to the four counties in the Forum area, including \$10 million to resurface a large portion of US 1 in Mercer County. NJ Transit and DRPA/PATCO will also receive a combined \$75 million for transit projects. While the transit money is spread across the state, programs in the Forum area that will benefit from increased funding include the NJ Transit 5311 Program, which will receive approximately \$4.7 million in additional funds under the act. At this time, these funds can only be broken down to the county level. **Table 8** summarizes highway projects that will be funded by the American Recovery and Reinvestment Act for the four counties with municipalities in the Forum area.

Table 8: Highway Projects Funded by the ARRA

County	Project Title	Project Description*	Funds Requested (in millions)
Hunterdon	Countywide pavement rehabilitation program	Milling, delaminating and resurfacing. Minor base course repairs. Modify all storm drainage inlets to meet current stormwater requirements. Add raised pavement markers to center lane striping. Inspect and replace traffic signage as needed.	\$3.720
Mercer	Pedestrian push button replacements	Replace existing pedestrian push buttons with ADA compatible push buttons with user feedback at 130 different intersections.	\$0.4
Mercer	Pedestrian countdown replacements	Replace existing pedestrian indications with countdown pedestrian indications at 130 different intersections.	\$0.2
Mercer	US 1 Resurfacing	Resurface US 1 from D&R Canal to North of CR 533.	\$10
Mercer	Pavement	West Broad St. from Greenwood to Louellen	\$0.14
Mercer	Pavement	Pavement marking enhancements	\$0.2
Mercer	Pavement	Province Line Rd. from Quaker Bridge Rd. to Delaware-Raritan Canal	\$0.23
Mercer	Pavement	Quaker Bridge Rd. from Village Rd. to Hughes Dr.	\$0.528
Mercer	Pavement	Princeton Hightstown Rd. from Clarksville to Slayback	\$0.418
Mercer	Pavement	Clarksville Rd. from Everett Dr. to North Post Rd.	\$0.14

Table 8: Highway Projects Funded by the ARRA (continued)

County	Project Title	Project Description*	Funds Requested (in millions)
Middlesex	Guiderail installation / replacement (CR 522, 612, 614, and 615)	Install new guiderails at warranted locations. Replace and/or upgrade existing guiderail, approach guiderail, approach guide rail terminals, transitions and bridge rail on bridges and culverts.	\$2.744
Middlesex	Countywide pavement	Pavement resurfacing and milling	\$7.513804
Somerset	Countywide milling and resurfacing	23 County roads located throughout Somerset. Milling and resurfacing. Replace existing curbing and restripe roadways as needed.	\$5.649029

*Descriptions shortened for the purposes of this report.

Sources: www.dvrpc.org/transportation/stimulus.htm;
www.njtpa.org/Involved/Cal/calendar.aspx?eid=93

NJDOT Project Development Process

The Study and Development Program (S&D Program) is a highway project development process that takes a selected highway deficiency through, depending on which pipeline it was assigned to, the steps of problem documentation (Problem Statement), initial concept development (CD), feasibility assessment (FA) of alternative solutions, and Preliminary Design (PD) which includes environmental review and preliminary engineering. The objective of the S&D Program is to make candidate projects ready for consideration in the next Transportation Improvement Program (TIP) update cycle for final design (DES), right-of-way (ROW) acquisition and construction (CON). A generalized description of NJDOT's project development process is presented below.

Problem Statement

This is officially the first step in the process and requires that a written description of the problem be submitted to NJDOT's Bureau of Capital Program Development (BCPD). This written description can be prepared and submitted by any number of sources, such as: county governments, municipal officials, general public, MPOs, TMAs or business/civic groups such as the Central Jersey Transportation Forum. Problem statements can also be generated internally by various NJDOT units.

NJDOT has a formalized problem statement form that includes the following important information: project location and limits, nature of the problem (capacity, operational, safety), identification of individuals or groups who are sponsoring or supporting the project, potential environmental/historic issues, accident history, traffic volumes and any other specific issues related to this problem.

Tier I and II Screening and Pipeline Assignment

Prior to review by NJDOT's Capital Program Committee (CPC), the problem statement goes through a screening process to identify the level of effort that will be required to proceed to construction. This screening process performed by NJDOT includes: management system review, accident analysis, existing conditions inventory, preliminary environmental screening and coordination with

appropriate agencies. The goal of the screening is to identify which of the NJDOT's pipelines the project will enter.

NJDOT has developed four different pipelines that a project can follow as it moves toward final design and construction. Pipeline 1 is for complex projects that are likely to require full Environmental Impact Statements or Environmental Assessments. These will proceed through full Concept Development (CD) and Feasibility Assessment (FA) before they can move into Preliminary Design (PD) then onto DES. Pipeline 2 is for moderate projects which will move into the Scope Development stage, a combination of CD and FA, then onto PD followed by DES. Pipeline 3 is for simple projects that can move right into DES with any necessary PD work done at the same time. Pipeline 4 is for Operations projects that can go directly to maintenance and operations.

The problem statement is reviewed by the Capital Program Committee (CPC) and if approved, will be included in the Study and Development program and assigned a lead unit depending on which pipeline it will follow.

Concept Development (CD, LCD)

Concept Development is the phase of work involving traffic studies, needs analyses, corridor studies, and other work prior to project development. CD denotes NJDOT Concept Development; LCD denotes Concept Development by a local entity (MPO, county, municipality).

The goal of Concept Development is to deliver projects with a well-defined purpose and need and a recommended concept that has been environmentally screened and has received community support.

Feasibility Assessment (FA, LFA)

Feasibility Assessment is the phase of work that evaluates a range of viable alternatives that address the purpose and need identified in CD. The goal is to develop feasible project proposals that produce the best balance among transportation needs, environmental values, public concerns and costs.

FA denotes Feasibility by NJDOT; LFA denotes Local Feasibility by a local entity (MPO, county, municipality). Feasibility Assessment will culminate in a presentation to the CPC regarding the potential project. If deemed worthy, the project will be assigned to a PM and allowed to advance to PD. If the project is determined to be "fatally flawed," it will be recommended for termination, or recycled for reconsideration as part of Concept Development.

When CD and FA are accomplished as a combined task, as in Pipeline 2 projects, it is often referred to as Scope Development.

Preliminary Design (PD, LPD)

Preliminary design is the process of advancing preliminary engineering and obtaining formal community and environmental approval of the Initially Preferred Alternative. PD denotes Preliminary Design by NJDOT; LPD denotes Local Preliminary Design by a local entity (MPO, county, municipality).

During PD, the program manager who was liaison for the Feasibility Assessment phase will assume full control of the project. A number of activities will be simultaneously set in motion, based on the IPA: community involvement, environmental documentation, and design services. To obtain the formal community involvement buy-in, generally a public meeting will be arranged which may lead to minor adjustments to the project's scope. Ultimately, local officials will be asked to provide a resolution of support endorsing the project.

At the conclusion of this stage, the Bureau of Project Planning and Development (BPPD) makes a presentation to the CPC regarding the potential project. If deemed a worthy project, it will enter the draft project pool as a candidate for the Capital Program. If the project is determined to be "fatally flawed", it will be recommended for termination or recycled for reconsideration as part of Concept Development (CD). However, there may be some instances where it may be warranted to conduct additional scoping within the BPPD in order to develop a more feasible alternative to address the project need. DVRPC has requested, and NJDOT supports, a larger role for the MPO in the public involvement efforts during both the CD and FA stages.

Capital Program

Projects successfully completing Preliminary Design are moved into a project pool from which the capital program is developed. The major inputs in determining whether a project moves from the project pool onto the capital program include its consistency with the Department's Capital Investment Strategy, MPO priorities, other known competing interests, critical goals of the Department, current commitments and funding assumptions. The desired result of this process is a financially constrained Four-Year Plan that meets the most critical needs/goals as identified in the Capital Improvement Strategy. Projects making it onto the Capital Program will now have funding budgeted to complete the necessary phases (final design, right-of-way acquisition, construction) for implementation.

Detailed Phase List for NJDOT Projects

The pages titled "NJDOT Project Development Process" provide an overview of how projects move through NJDOT. They describes the main phases that take an idea through to completion. In the interest of brevity, only the main phases were described. A TIP includes some more detailed phases that further divide the basic ones. This more detailed range of phases and their abbreviations are defined in **Table 9**.

Table 9: Range of Phases and Abbreviations

Phase	Full Name
CAP	Capital Asset Construction
CD	Concept Development
CON	Construction
DES	Final Design/Engineering
EC	Final Design/Engineering and Construction
ERC	Final Design/Engineering, Right-of-Way Acquisition, and Construction

Table 9: Range of Phases and Abbreviations (continued)

Phase	Full Name
FA	Feasibility Assessment
FD	Final Design
FSD	Final Scope Development
LPD	Local Preliminary Design
PD	Preliminary Design
PLS	Planning Study
PRD	Project Development/Preliminary Engineering
ROW	Right-of-Way Acquisition
SWI	Statewide Investment
UTI	Utilities
*Note:	An "L" preceding any phase means Local Agency Lead; otherwise, State DOT is the lead agency

Source: FY 2009-2012 TIP for New Jersey

Transportation Funding Sources

Table 10 defines terms used in the TIP. These are federal funding sources unless otherwise noted. A broader range of funding sources covering transportation and land use projects is the 2009 *Municipal Resource Guide* (Publication 09061) available from DVRPC.

Table 10: Funding Sources and Abbreviations

Highway	
Abbreviation	Funding Source
BR BOND DISC	State Bridge Discretionary funding
BRIDGE	Federal Bridge Program
BRIDGE-OFF	Federal Bridge Program (bridges not on federal aid roads)
CMAQ	Congestion Mitigation and Air Quality Improvement Program
DEMO	Special Funding from Congressional Earmarks
DEP-BOND	Special bond funding from Department of Environmental Protection
FERRY	Federal Ferry Funds
FTA	Federal Transit Administration
HSIP	Highway Safety Improvement Program
I-MAINT	Interstate Maintenance
MIN GAR	Minimum Guarantee funds (TEA-21)
NBIG	National Boating Infrastructure Grant
NHS	National Highway System
PL	Metropolitan Planning Funds - FHWAPL-FTA Metropolitan Planning Funds - FTA
SPR	Planning and Research
SPR-FTA	FTA - Planning and Research
STATE	State transportation funds
STP	Surface Transportation Program
STP-STU	STP – Urban Allocation
STP-SY	STP – Hazard Elimination
STP-TE	STP - Transportation Enhancement Program
TBD	To be determined

Table 10: Funding Sources and Abbreviations (continued)

Transit	
Abbreviation	Funding Source
COPS	State Certificates of Participation
CMAQ	Congestion Mitigation and Air Quality Improvement Program
DRPA	Delaware River Port Authority funds
FED OTHER	Federal non-transportation funds
FREEDOM	FTA 5317 Formula Program - New Freedom
SEC 5307	FTA Urban Area Formula Program
SEC 5309	FTA Capital Assistance Program
SEC 5310	Elderly and Persons with Disabilities Program
SEC 5311	Rural
SEC 5340-G	FTA 5340 Formula Program - Growing States
STATE	State
OTHER	Other
TBD	To be determined

Source: FY 2009-2012 TIP for New Jersey

TIP-Highway Projects

TABLE OF CONTENTS

CR 602 Camp Meeting Avenue Bridge over Trenton Line	15
CR 602 Wertsville Road Bridge (E-166) over Back Brook	16
CR 602 Wertsville Road Bridge (E-174) over Tributary of Back Brook	17
CR 683 Schalks Station Road Bridge	18
I-95 Reed Road Wetland Mitigation Site	19
NJ 27 Six Mile Run Bridge (3E)	20
NJ 27 Renaissance 2000, Bennetts Lane to Somerset Street	21
NJ 29 Moores Station Canal Crossing (AKA Pleasant Valley Road)	22
NJ 31 Pennington Circle Safety Improvements	23
NJ 33 Conrail Bridge Removal	24
Princeton Township Roadway Improvements	25
US 1 Bottleneck Relief	26
US 1 Business, Brunswick Circle to Texas Avenue	28
US 1 Heathcote Brook Bridge	29
US 1 Millstone River, Bridge Replacement	30
US 1 Southbound, Quaker Bridge Mall Overpass	31
US 130 Pedestrian Bridge, Robbinsville Township	32
US 130 Southbound, North of Deans Road to Vicinity of Lawrence Brook, Resurfacing	33
US 206 Crusers Brook Bridge (41)	35
US 206 Bypass, Mountain View Road to Old Somerville Road (14A & 15A)	36
US 206 CSX Bridge Replacement	38
US 206 Stony Brook Bridges	39
US 1 Middlesex County Corridor Study	40
Hillsborough Road and Homestead Road Bridges	41
Plainsboro Traffic Calming Project	42
Van Dyke Road and Greenwood Avenue Bridges over Trenton Branch	43

Note: For projects that appear in the NJTPA TIP, the project descriptions were taken from the NJTPA Online Transportation Information System (NOTIS). All other project descriptions were taken from the DVRPC FY 2009-2012 TIP database.

CJTF - Project Status Report - Spring 2009
CR 602, Camp Meeting Avenue Bridge over Trenton Line

Route: CR 602

Section: Camp Meeting Avenue Bridge
over Trenton Line

DBNUM: 99405



County: Somerset

Municipalities: Montgomery Twp.

Sponsor: NJDOT

This project will address the proposed replacement of this structure which is in critical condition. The proposed replacement of this structure will be designed so as not to preclude improvements needed to reintroduce passenger service to the West Trenton Line as well as increasing the height of the bridge to allow the current tracks to be raised to address ongoing railroad operational issues as identified in the NJTPA Grade Crossing Assessment Study.

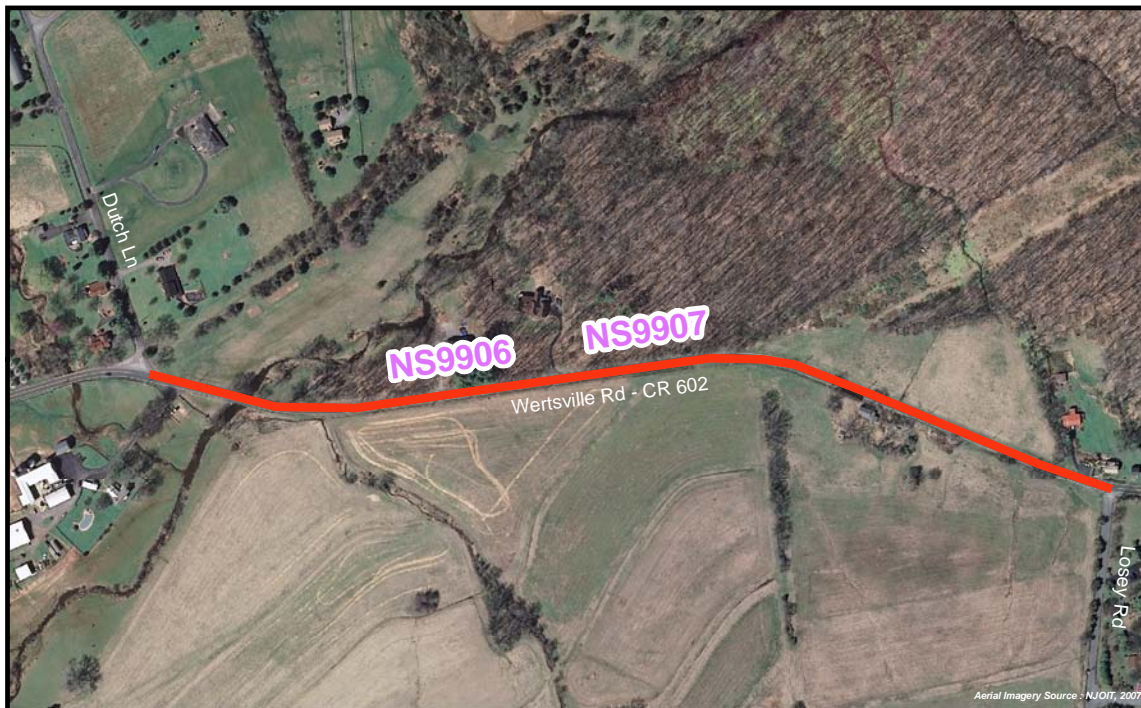
The project is programmed in the following TIP:

MPO	Plan	Phase	Year	Fund Source	Cost (in millions)
NJTPA	FY 2009-2012 TIP for New Jersey	DES	2011	BRIDGE	\$0.75
NJTPA	FY 2009-2012 TIP for New Jersey	ROW	2012	STATE	\$0.5
NJTPA	FY 2009-2012 TIP for New Jersey	CON	2013	BRIDGE	\$5
					Total: \$6.25

Note: see pages 8-11 for explanation of Phases; see page 11-12 for Fund Source definitions

CJTF - Project Status Report - Spring 2009
CR 602, Wertsville Road Bridge (E-166) over Back Brook

Route: CR 602 **Section:** Wertsville Road Bridge (E-166) over Back Brook **DBNUM:** NS9907



County: Hunterdon **Municipalities:** East Amwell Twp. **Sponsor:** Hunterdon

This project includes the replacement of the existing functionally obsolete Hunterdon County Bridge E166, which carries County Route 602 over the Back Brook. The existing structure, which carries two 10-foot, 10-inch lanes, will be replaced with a new structure carrying two 12-foot lanes and two six-foot shoulders. The project will also improve an existing culvert located to the west of Bridge E166, which carries County Route 602 over an unnamed Tributary to the Back Brook. This culvert will be replaced with a precast or rigid frame structure. The roadway approach work will be essentially on the same geometric alignment as the existing structure, while better defining the intersection of Dutch Lane, which falls between the bridge and the culvert.

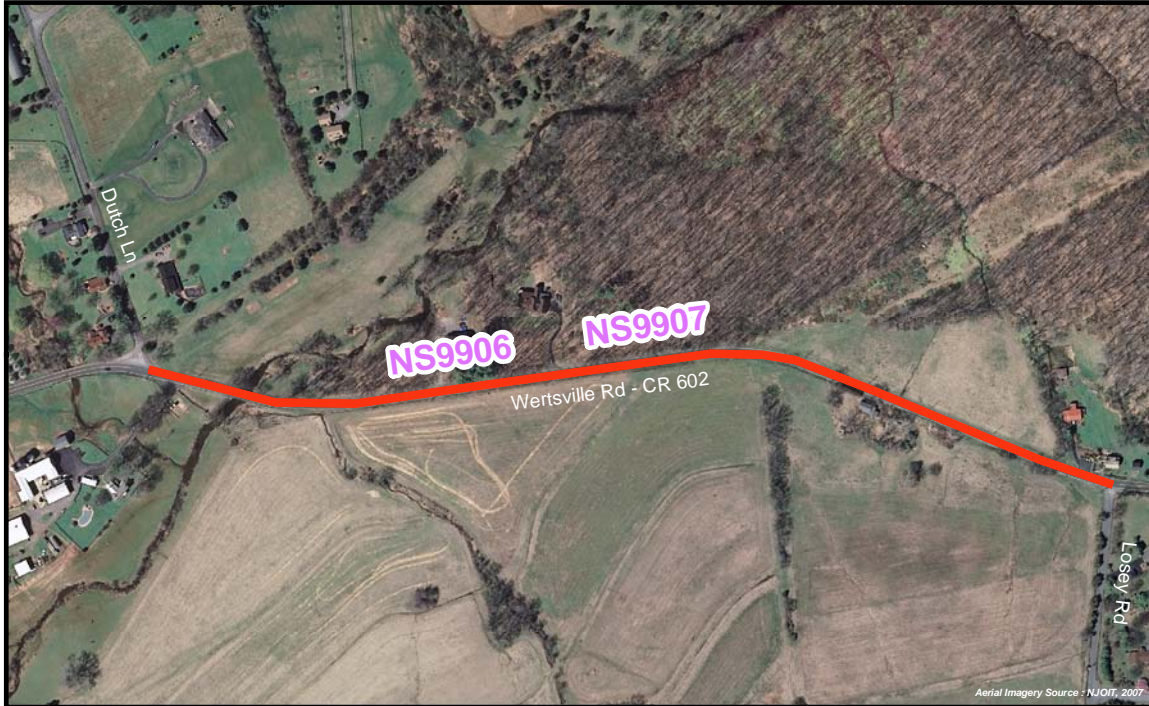
The project is programmed in the following TIP:

MPO	Plan	Phase	Year	Fund Source	Cost (in millions)
NJTPA	FY 2009-2012 TIP for New Jersey	CON	2009	STP-NJ	\$3.1
					Total: \$3.1

Note: see pages 8-11 for explanation of Phases; see page 11-12 for Fund Source definitions

CJTF - Project Status Report - Spring 2009
CR 602, Wertsville Road Bridge (E-174) over Tributary of Back Brook

Route: CR 602 **Section:** Wertsville Road Bridge (E-174) over Tributary of Back Brook **DBNUM:** NS9906



County: Hunterdon **Municipalities:** East Amwell Twp. **Sponsor:** Hunterdon

This project includes the replacement of the existing functionally obsolete Hunterdon County Bridge E174, which carries County Route 602 over a Tributary to the Back Brook. The existing structure, which carries two 12-foot lanes, will be replaced with a new structure carrying two 12-foot lanes and two six-foot shoulders. The project will also improve the substandard horizontal alignment of the roadway approaches.

This project is programmed in the following TIP:

MPO	Plan	Phase	Year	Fund Source	Cost (in millions)
NJTPA	FY 2009-2012 TIP for New Jersey	ROW	2009	STP-NJ	\$0.2
NJTPA	FY 2009-2012 TIP for New Jersey	CON	2010	STP-NJ	\$3.4
					Total: \$3.6

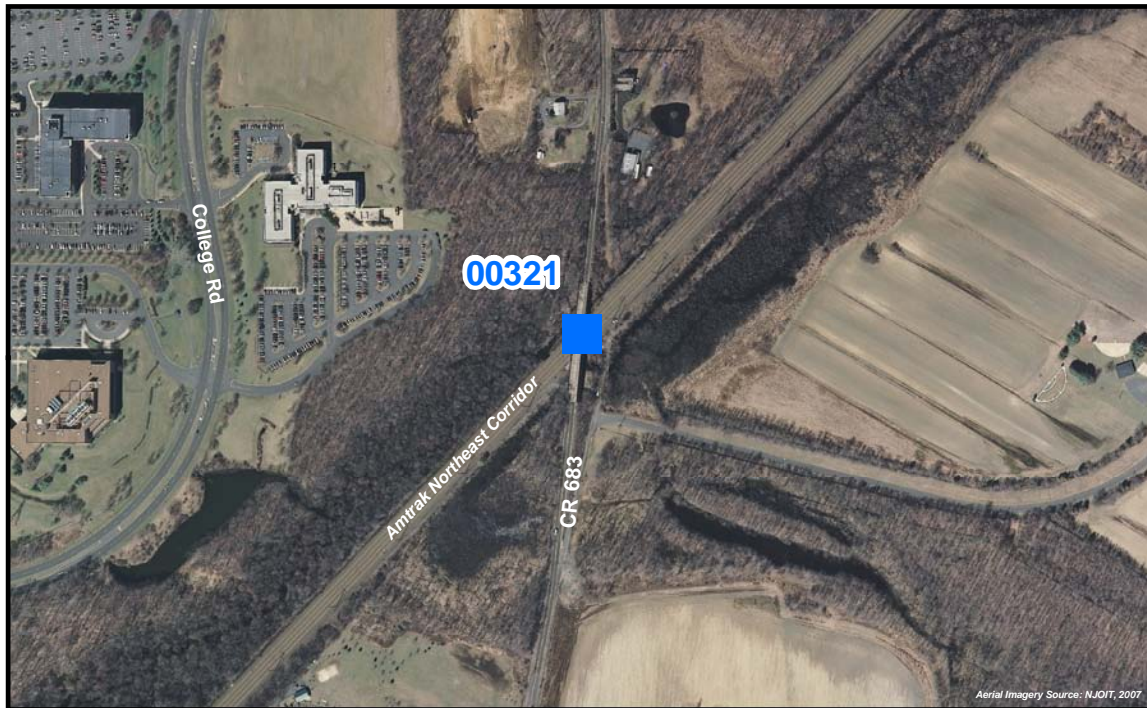
Note: see pages 8-11 for explanation of Phases; see page 11-12 for Fund Source definitions

CJTF - Project Status Report - Spring 2009
CR 683, Schalks Station Road Bridge

Route: CR 683

Section: Schalks Station Road Bridge

DBNUM: 00321



County: Middlesex

Municipalities: Plainsboro Twp.

Sponsor: NJDOT

This project will provide for the replacement of the bridge deck that will maintain the existing steel superstructure and provide bicycle/pedestrian accessibility. A shared bicycle/pedestrian sidewalk lane will be provided through cantilever addition on the through girders along both the east and west sides of Schalk's Crossing Road. Repairs will be made to the substructure. Prior to any bridge rehabilitation, the railroad catenary system will be modified. Roadway improvements would include milling and resurfacing the existing roadway approaches for tie-ins to the bridge.

This project is programmed in the following TIP:

MPO	Plan	Phase	Year	Fund Source	Cost (in millions)
NJTPA	FY 2009-2012 TIP for New Jersey	DES	2009	STP-NJ	\$0.8
NJTPA	FY 2009-2012 TIP for New Jersey	CON	2010	STP-NJ	\$4.53
					Total: \$5.33

Note: see pages 8-11 for explanation of Phases; see page 11-12 for Fund Source definitions

CJTF - Project Status Report - Spring 2009
I-95, Reed Road Wetland Mitigation Site

Route: I-95 **Section:** Reed Road Wetland Mitigation Site **DBNUM:** 9194A



County: Mercer **Municipalities:** Ewing Twp.
Hopewell Twp. **Sponsor:** NJDOT

This project will build the second of two wetland mitigation sites required for the mitigation of wetlands impacted by the I-95, Scotch Road project. The wetland mitigation site, encompassing approximately one acre in the townships of Ewing and Hopewell will be cleared, regraded, and planted with wetland and transition area seed mixes to create wetlands with adjoining buffer area. Approximately 100 feet of the stream bank of Ewing Creek will also be stabilized. This work has been approved by NJDEP under Stream Encroachment Permit No. 1102-00-0004.5.

This project is programmed in the following TIP:

MPO	Plan	Phase	Year	Fund Source	Cost (in millions)
DVRPC	FY 2009-2012 TIP for New Jersey	CON	2009	STATE	\$1.335
					Total: \$1.335

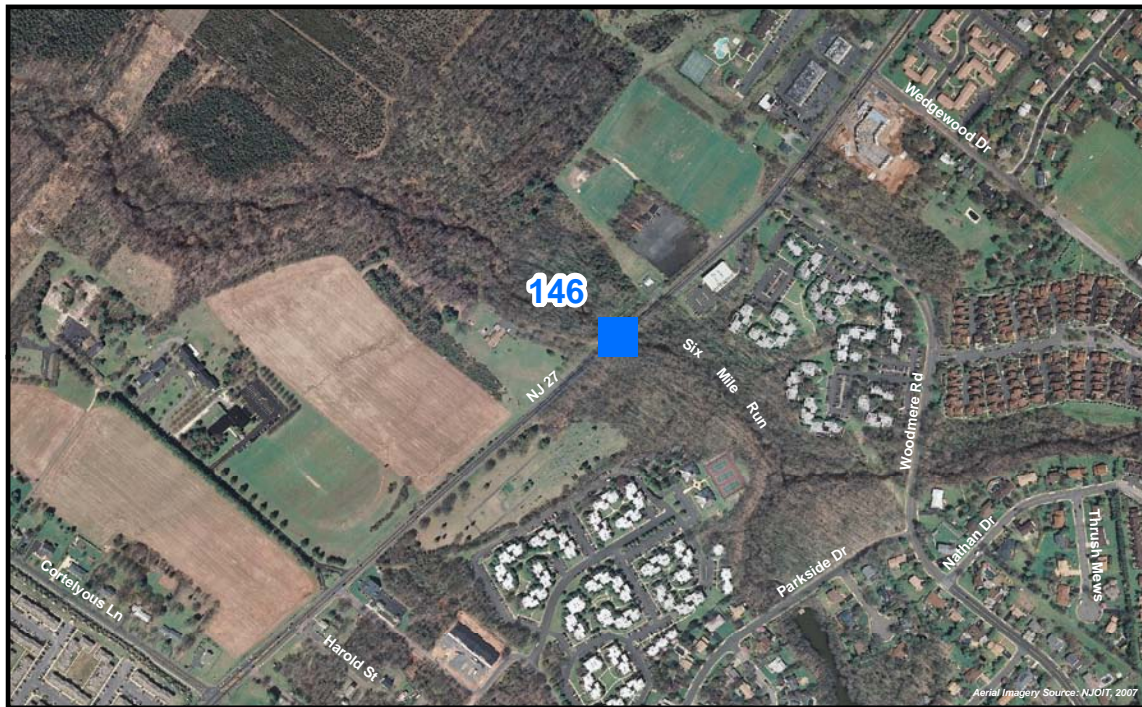
Note: see pages 8-11 for explanation of Phases; see page 11-12 for Fund Source definitions

CJTF - Project Status Report - Spring 2009
NJ 27 Six Mile Run Bridge (3E)

Route: NJ 27

Section: Six Mile Run Bridge (3E)

DBNUM: 146



County: Middlesex
Somerset

Municipalities: Franklin Twp.
North Brunswick Twp.

Sponsor: NJDOT

The existing structure will be replaced on the same alignment. The existing structure has two 11-foot travel lanes and shoulders of varying width. The new structure will have two 12-foot travel lanes and 10-foot shoulders, along with a sidewalk on the western side of the structure.

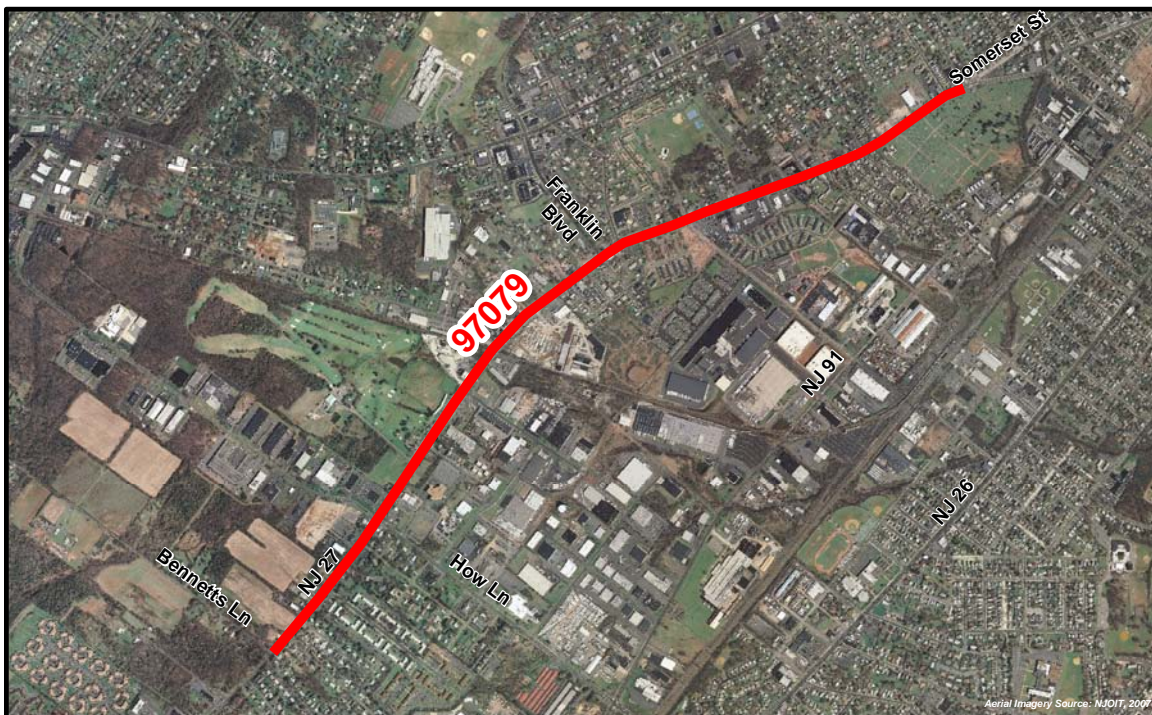
This project is programmed in the following TIP:

MPO	Plan	Phase	Year	Fund Source	Cost (in millions)
NJTPA	FY 2009-2012 TIP for New Jersey	CON	2009	BRIDGE	\$4.8
					Total: \$4.8

Note: see pages 8-11 for explanation of Phases; see page 11-12 for Fund Source definitions

CJTF - Project Status Report - Spring 2009
NJ 27, Renaissance 2000, Bennetts Lane to Somerset Street

Route: NJ 27 **Section:** Renaissance 2000, Bennetts Lane to Somerset Street **DBNUM:** 97079



County: Middlesex
Somerset **Municipalities:** New Brunswick City
North Brunswick Twp.
Franklin Twp. **Sponsor:** NJDOT

Three lanes of travel will be provided on Route 27 for the majority of the project limits, with a single travel lane in each direction and a center, two-way left-turn lane. Between Bennetts Lane and How Lane/Veronica Avenue, there will be one northbound lane and two southbound lanes. Additional lanes are provided at select intersections in response to traffic volume demand.

This project is programmed in the following TIP:

MPO	Plan	Phase	Year	Fund Source	Cost (in millions)
NJTPA	FY 2009-2012 TIP for New Jersey	ROW	2009	STP	\$1.7
NJTPA	FY 2009-2012 TIP for New Jersey	CON	2010	STATE	\$8.624
					Total: \$10.324

Note: see pages 8-11 for explanation of Phases; see page 11-12 for Fund Source definitions

CJTF - Project Status Report - Spring 2009
NJ 29, Moores Station Canal Crossing (AKA Pleasant Valley Road)

Route: NJ 29 **Section:** Moores Station Canal Crossing (AKA Pleasant Valley Road) **DBNUM:** 00362F



County: Mercer **Municipalities:** Hopewell Twp. **Sponsor:** NJDOT

This project will provide access to the D&R Canal towpath trail via a bicycle and pedestrian crossing and an opportunity to educate the public about the history of the canal. The project will provide for the construction of an A-frame swing bridge crossing of the D&R Canal and improvements to the existing parking area. Also included is a new boat or canoe dock and a new kiosk sign.

This project is programmed in the following TIP:

MPO	Plan	Phase	Year	Fund Source	Cost (in millions)
DVRPC	FY 2009-2012 TIP for New Jersey	CON	2009	OTHER	\$1.3
					Total: \$1.3

Note: see pages 8-11 for explanation of Phases; see page 11-12 for Fund Source definitions

CJTF - Project Status Report - Spring 2009
NJ 31, Pennington Circle Safety Improvements

Route: NJ 31

Section: Pennington Circle
Safety Improvements

DBNUM: 159A



County: Mercer

Municipalities: Hopewell Twp.

Sponsor: NJDOT

The project is a breakout of the Rt. 31 TDD project (DBNUM 159). The project will evaluate and begin to develop measures to improve safety at the Pennington Circle, which is the site of frequent vehicle crashes and is ranked 98th on the list of “High Crash Frequency and Severity” intersections. Limits of the project will also include appropriate lengths of CR 546 and CR 640, which intersect the circle. The intersection is a significant safety concern for Hopewell Township officials and residents. A Concept Development study will be undertaken for modifying the Pennington Circle, aimed at improving safety and operations and that are consistent with the community’s long term “vision”.

This project is programmed in the following TIP:

MPO	Plan	Phase	Year	Fund Source	Cost (in millions)
DVRPC	FY 2009-2012 TIP for New Jersey	DES	2011	HSIP	\$1
DVRPC	FY 2009-2012 TIP for New Jersey	ROW	2012	HSIP	\$1
DVRPC	FY 2009-2012 TIP for New Jersey	CON	2014	HSIP	\$2.2
					Total: \$4.2

Note: see pages 8-11 for explanation of Phases; see page 11-12 for Fund Source definitions

CJTF - Project Status Report - Spring 2009

NJ 33, Conrail Bridge Removal

Route: NJ 33

Section: Conrail Bridge Removal

DBNUM: 9101



County: Mercer

Municipalities: Robbinsville Twp.

Sponsor: NJDOT

The project will provide for the elimination of the existing railroad bridge on essentially the same horizontal alignment. An at-grade rail crossing is proposed. The improvements also include widening, reconstruction and safety improvements for the Route 33 and Route 130 intersection as well as upgrading the traffic signal, pedestrian movements and signing. A reverse loop ramp is proposed from Route 130 southbound to Route 33 eastbound to provide for left turn movements to CR 526. Approximately eight driveways will be adjusted through the New Jersey Highway Access Code due to safety concerns.

This project is programmed in the following TIP:

MPO	Plan	Phase	Year	Fund Source	Cost (in millions)
DVRPC	FY 2009-2012 TIP for New Jersey	CON	2009	STATE	\$10.075
					Total: \$10.075

Note: see pages 8-11 for explanation of Phases; see page 11-12 for Fund Source definitions

CJTF - Project Status Report - Spring 2009
Princeton Township Roadway Improvements

Route: N/A	Section: Princeton Township Roadway Improvements	DBNUM: HP01010
-------------------	---	-----------------------

County: Mercer	Municipalities: Princeton Twp.	Sponsor: Princeton Twp.
-----------------------	---------------------------------------	--------------------------------

This project will provide for roadway improvements in the vicinity of the municipal complex. Roadways to be improved include: Valley, Mount Lucas, Terhune, and Cherry Hill.

The following special Federal appropriations were allocated to this project. FY 2001/Section 378/45A \$498,900 (balance available \$498,900). (ID# NJ078).

The project is programmed in the following TIP:

MPO	Plan	Phase	Year	Fund Source	Cost (in millions)
DVRPC	FY 2009-2012 TIP for New Jersey	ERC	2009	DEMO	\$0.4989
					Total: \$0.4989

Note: see pages 8-11 for explanation of Phases; see page 11-12 for Fund Source definitions

CJTF - Project Status Report - Spring 2009
US 1, Bottleneck Relief*

Route: US 1

Section: Bottleneck Relief

DBNUM: 08417



County: Middlesex **Municipalities:** Plainsboro Twp. **Sponsor:** NJDOT
South Brunswick Twp.
North Brunswick Twp.

Widening of Route 1 to provide six lanes of through traffic within the project limits. The project will provide at-grade intersections at all major road crossings.

Structure Numbers: 1201152, 1201153, 1201154, 1201155, 1201156, 1201160, 1201159, 1201157.

This project is programmed in the following TIP:

MPO	Plan	Phase	Year	Fund Source	Cost (in millions)
NJTPA	FY 2009-2012 TIP for New Jersey	DES	2013	STATE	\$25
NJTPA	FY 2009-2012 TIP for New Jersey	ROW	2014	STATE	\$10
NJTPA	FY 2009-2012 TIP for New Jersey	ROW	2015	STATE	\$10
NJTPA	FY 2009-2012 TIP for New Jersey	CON	2016	STATE	\$137.5
NJTPA	FY 2009-2012 TIP for New Jersey	CON	2017	STATE	\$112.5

					Total: \$295
--	--	--	--	--	--------------

Note: see pages 8-11 for explanation of Phases; see page 11-12 for Fund Source definitions

**See note at the bottom of page 38 for an explanation of how this project relates to DBNUM 93146, the Middlesex County Corridor Study.*

DNBUM 08417 (above) is a Concept Development Study which will focus on implementing solutions to address operational and safety deficiencies along Route 1 in South Brunswick Township. The project will integrate information from the Middlesex County Corridor Study (DBNUM 93146) to develop the best strategies to meet current and future needs within the corridor. Some readers may recall that the level of funding shown here for DBNUM 08417 was listed under DBNUM 93146 in the last edition of the Planned Projects Status Report (Spring 2008). At the time, DBNUM 08417 had not been formally established, and thus NJDOT determined that the Middlesex County Corridor Study was the best place to attribute the funding.

NJDOT reports that DBNUM 08417 is now in the final stages of negotiation with a consultant and that the Concept Development Study effort should commence soon.

Source: Gary Leach, Project Engineer, NJDOT (3/23/09)

CJTF - Project Status Report - Spring 2009
US 1 Business, Brunswick Circle to Texas Avenue

Route: US 1

Section: Brunswick Circle to
Texas Avenue

DBNUM: 04316



County: Mercer

Municipalities: Lawrence Twp.

Sponsor: Local

This is a study initiated by the local community to redevelop this section of Route 1 Business into a pedestrian friendly urban streetscape that promotes business development. The township would like to enhance the visual aesthetics along this corridor as well as provide better vehicular and pedestrian circulation.

The project is programmed in the following TIP:

MPO	Plan	Phase	Year	Fund Source	Cost (in millions)
DVRPC	FY 2009-2012 TIP for New Jersey	CON	2011	STP-TE	\$4.1
					Total: \$4.1

Note: see pages 8-11 for explanation of Phases; see page 11-12 for Fund Source definitions

CJTF - Project Status Report - Spring 2009
US 1, Heathcote Brook Bridge

Route: US 1

Section: Heathcote Brook Bridge

DBNUM: 08357



County: Middlesex **Municipalities:** South Brunswick Twp. **Sponsor:** NJDOT

Emergency repair to the pavement was required in October 2007 due to settlement of the bridge substructure. Inspection and temporary repairs were done to stabilize the condition and restore pavement and deck elevations. The project will replace the culvert on an emergency basis due to uncertainty of the durability of the temporary repairs to withstand further scour from significant storm events.

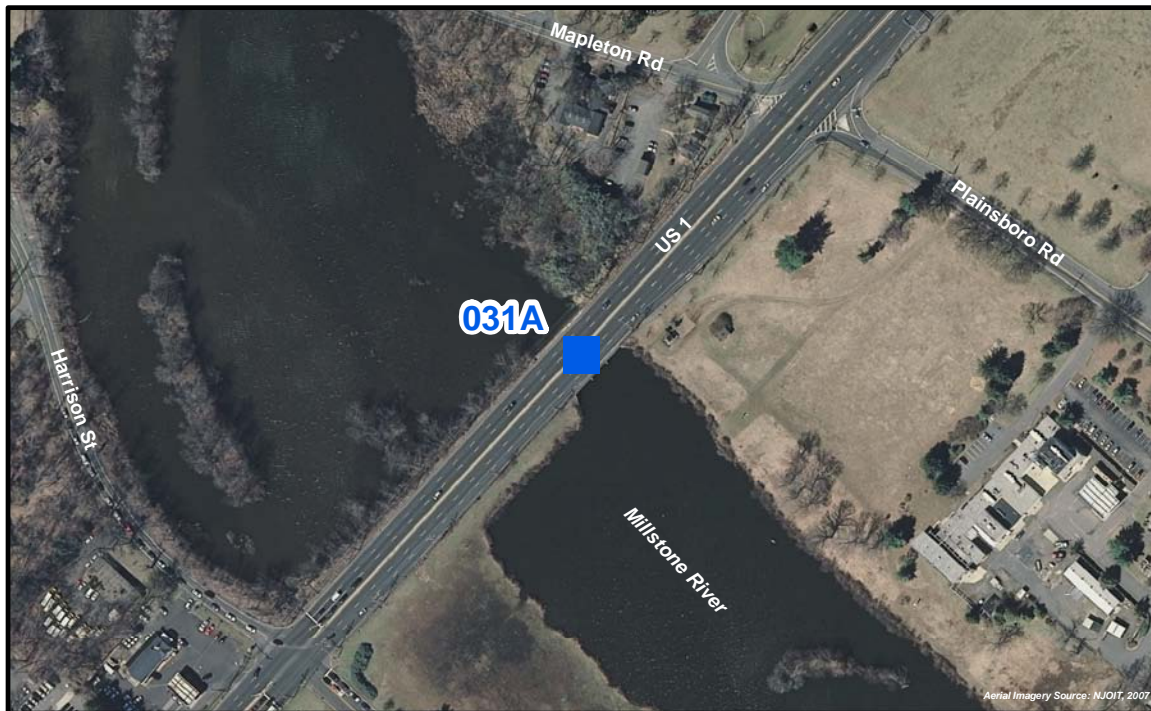
This project is programmed in the following TIP:

MPO	Plan	Phase	Year	Fund Source	Cost (in millions)
NJTPA	FY 2009-2012 TIP for New Jersey	CON	2009	STATE	\$4
					Total: \$4

Note: see pages 8-11 for explanation of Phases; see page 11-12 for Fund Source definitions

CJTF - Project Status Report - Spring 2009
US 1, Millstone River, Bridge Replacement

Route: US 1 **Section:** Millstone River, Bridge Replacement **DBNUM:** 031A



County: Mercer **Municipalities:** West Windsor Twp. **Sponsor:** NJDOT
Middlesex Plainsboro Twp.

This project is part of the Route 1, Penns Neck Improvements and will replace the bridge over the Millstone River as an independent project. The Millstone River bridge was constructed in 1928 and rehabilitated in 1959. The existing three-span bridge is 104 feet long and 76 feet wide. The structure is in poor condition. The bridge carries six travel lanes of Route 1 with no shoulders or sidewalks on either side. The existing bridge also carries gas, water, telephone and fiber optic utilities. The new structure will be two spans, 110 feet long and 126 feet wide and will accommodate six travel lanes with full shoulders/auxiliary lanes for bicycles and two sidewalks for pedestrians.

This project is programmed in the following TIP:

MPO	Plan	Phase	Year	Fund Source	Cost (in millions)
DVRPC	FY 2009-2012 TIP for New Jersey	CON	2009	STATE	\$8.953
NJTPA	FY 2009-2012 TIP for New Jersey	CON	2009	STATE	\$8.953
					Total: \$17.906

Note: see pages 8-11 for explanation of Phases; see page 11-12 for Fund Source definitions

CJTF - Project Status Report - Spring 2009
US 1, Southbound, Quaker Bridge Mall Overpass

Route: US 1

Section: Southbound, Quaker
Bridge Mall Overpass

DBNUM: 01330A1



County: Mercer

Municipalities: Lawrence Twp.

Sponsor: NJDOT

This project will provide improved traffic operations and safety conditions at the southbound ramp exiting Quaker Bridge Mall. The proposed improvement may provide for the addition of a 15-foot auxiliary lane extending from the loop ramp from the Quaker Bridge Mall overpass to Route 1 southbound for approximately 0.40 mile. The new auxiliary lane would then taper back to the existing three-lane roadway before reaching the exit ramps for the I-95/I-295 interchange. This concept is expected to be compatible with future mid-term and long-term projects in this area.

The project is programmed in the following TIP:

MPO	Plan	Phase	Year	Fund Source	Cost (in millions)
DVRPC	FY 2009-2012 TIP for New Jersey	CON	2011	OTHER	\$3.2
					Total: \$3.2

Note: see pages 8-11 for explanation of Phases; see page 11-12 for Fund Source definitions

CJTF - Project Status Report – Spring 2009
US 130 Pedestrian Bridge, Robbinsville Township

Route: US 130

Section: Pedestrian Bridge,
Robbinsville Township

DBNUM: 98535



County: Mercer **Municipalities:** Robbinsville Twp. **Sponsor:** Robbinsville Twp.

This project will provide for the construction of a pedestrian bridge across Route 130.

The following special Federal appropriations were allocated to this project. TEA-21/Q92 \$2,306,474 (balance available \$2,306,474).

The project is programmed in the following TIP:

MPO	Plan	Phase	Year	Fund Source	Cost (in millions)
DVRPC	FY 2009-2012 TIP for New Jersey	CON	2010	DEMO	\$2.306474
					Total: \$2.306474

Note: see pages 8-11 for explanation of Phases; see page 11-12 for Fund Source definitions

CJTF - Project Status Report - Spring 2009
US 130, Southbound, North of Deans Road to Vicinity of
Lawrence Brook, Resurfacing

Route: US 130

Section: Southbound, North of
Deans Road to Vicinity of
Lawrence Brook, Resurfacing

DBNUM: 07312



County: Middlesex

Municipalities: South Brunswick Twp.
North Brunswick Twp.

Sponsor: NJDOT

The scope of this project is to preserve the integrity of the roadway by maintaining the pavement structure, improving ride quality and restoring skid resistance. The Pavement Management System has identified this highway segment as deficient in both ride quality and surface distress. The existing southbound roadway within the project limits consists of two 12-foot concrete travel lanes except between mileposts 80.21 - 80.30 where a third asphalt lane exists. The outside shoulder consists of asphalt. The opposing traffic is separated by a grass median.

The suggested roadway treatments are for the concrete lanes, concrete pavement rehabilitation followed by micro-surfacing and then overlay with a two-inch hot mix asphalt; the asphalt lane will have an overlay of two-inches of hot mix asphalt; the outside shoulder will be milled to an average depth of one inch and then have an overlay of two inches of hot mix asphalt.

This project is programmed in the following TIP:

MPO	Plan	Phase	Year	Fund Source	Cost (in millions)
NJTPA	FY 2009-2012 TIP for New Jersey	CON	2009	NHS	\$2.285
					Total: \$2.285

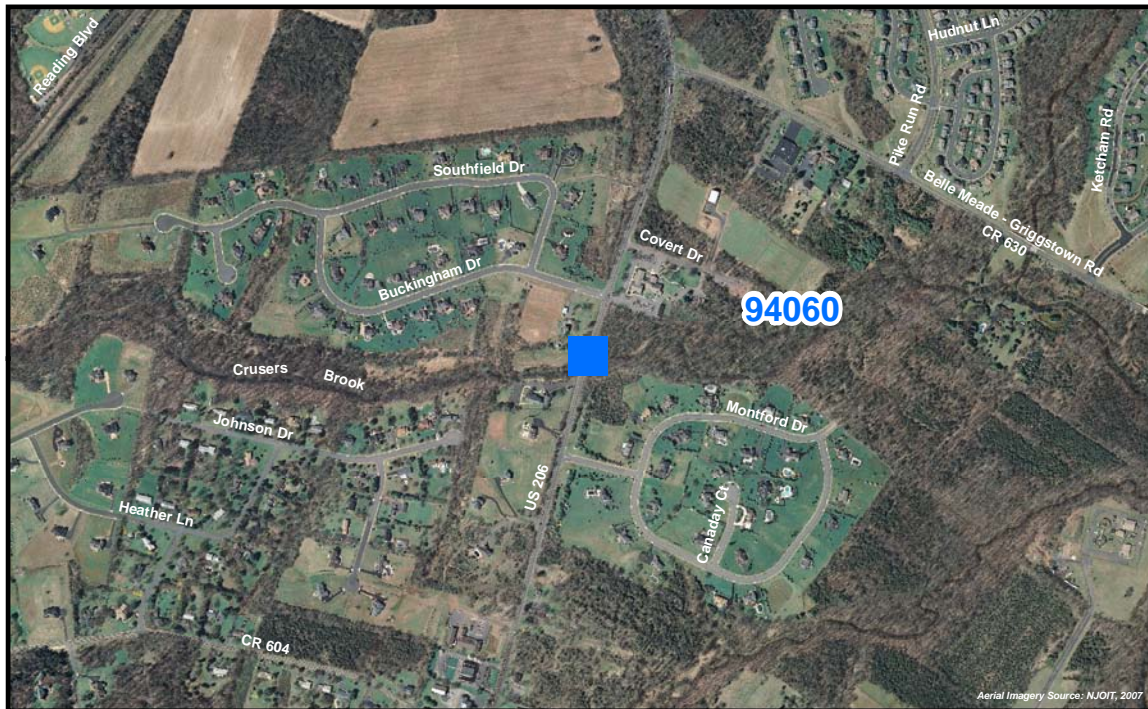
Note: see pages 8-11 for explanation of Phases; see page 11-12 for Fund Source definitions

CJTF - Project Status Report - Spring 2009
US 206, Crusers Brook Bridge (41)

Route: US 206

Section: Crusers Brook Bridge (41)

DBNUM: 94060



County: Somerset

Municipalities: Montgomery Twp.

Sponsor: NJDOT

This project will provide for the replacement of the existing structure which is in poor condition due to the condition of the superstructure and inadequate deck geometry. Also, the structure is potentially scour critical since the existing abutments are not founded on piles. The structure will be widened from 30 feet to 44 feet to include full ten-foot shoulders instead of the current three-foot shoulders. The piers and abutments will be founded on piles. The piers will be wide enough to accommodate a separate pedestrian walkway on the west side of the bridge.

This project is programmed in the following TIP:

MPO	Plan	Phase	Year	Fund Source	Cost (in millions)
NJTPA	FY 2009-2012 TIP for New Jersey	DES	2009	BRIDGE	\$1
NJTPA	FY 2009-2012 TIP for New Jersey	CON	2011	STATE	\$6.451
					Total: \$7.451

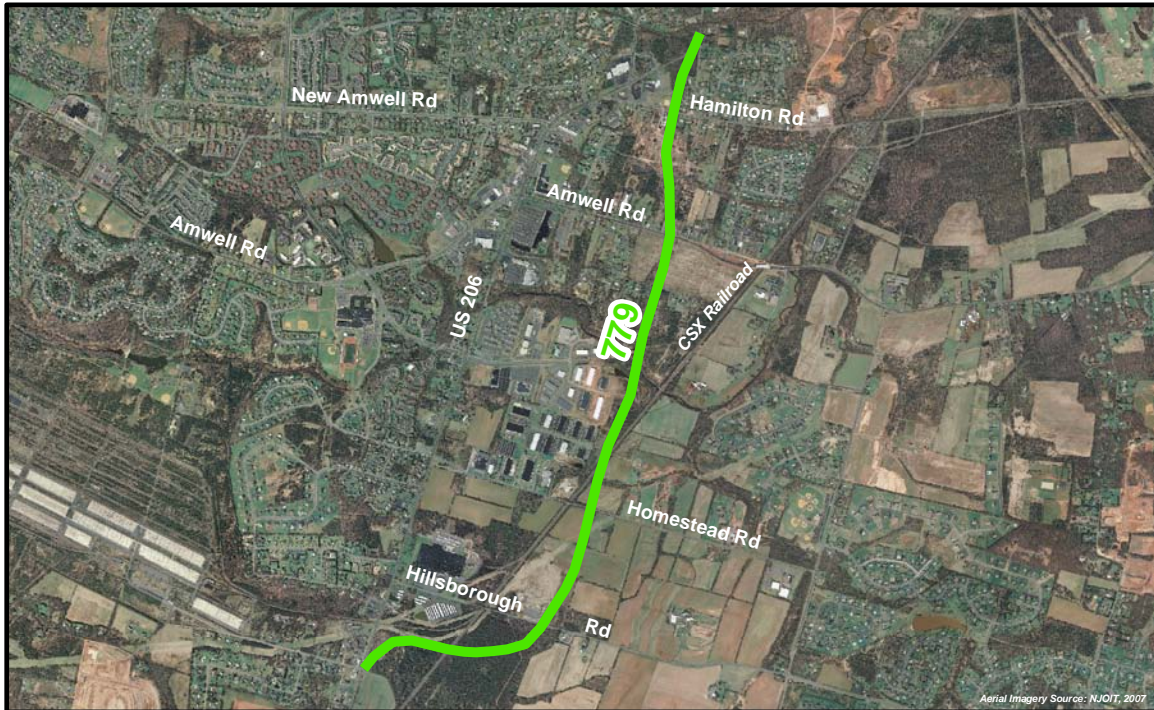
Note: see pages 8-11 for explanation of Phases; see page 11-12 for Fund Source definitions

CJTF - Project Status Report - Spring 2009
US 206 Bypass, Mountain View Road to
Old Somerville Road (14A & 15A)*

Route: US 206

Section: Mountain View Road to
Old Somerville Road (14A & 15A)

DBNUM: 779



County: Somerset

Municipalities: Hillsborough Twp.

Sponsor: NJDOT

This project will provide for the construction of a segment of Route 206 on new alignment, bypassing a segment of existing highway that has serious congestion and safety problems. The new segment of roadway will consist of four 12-foot travel lanes, two 10-foot outside shoulders, two five-foot inside shoulders, a concrete median barrier and two 15-foot outside borders between Amwell Road (CR 514) and Old Somerville Road. Between Amwell Road (CR 514) and Mountain View Road, the new segment of roadway will consist of two 12-foot travel lanes, two 10-foot outside shoulders, two three-foot inside shoulders, a 15-foot grass median and two 15-foot outside borders.

Advance utility work will be performed on the Texas Eastern pipeline, Buckeye pipeline and AT&T facilities.

This project is multi-funded under the provisions of Section 13 of P.L. 1995, c.108. Total construction funding needed is anticipated to be \$120.1 million.

The project is programmed in the following TIP:

MPO	Plan	Phase	Year	Fund Source	Cost (in millions)
NJTPA	FY 2009-2012 TIP for New Jersey	UTI	2009	STATE	\$5
NJTPA	FY 2009-2012 TIP for New Jersey	CON	2011	STATE	\$40
NJTPA	FY 2009-2012 TIP for New Jersey	CON	2012	STATE	\$40
NJTPA	FY 2009-2012 TIP for New Jersey	CON	2013	STATE	\$35.1
					Total: \$120.1

Note: see pages 8-11 for explanation of Phases; see page 11-12 for Fund Source definitions

**This project is funded in the current TIP as listed above. However, plans exist to split the project into two sections, as follows:*

A breakout of the Route 206 Bypass project between Hillsborough Road and Amwell Road (CR 514) is completing Final Design, and is in the Draft 2010 TIP for construction funding. The estimated total project cost for this portion of the project is \$80 million. A second portion of the project will consist of completing the remainder of the Route 206 Bypass between Amwell Road (CR 514) and Old Somerville Road and between the Mountain View Road and Hillsborough Road intersections. This project is also in Final Design, and construction is anticipated for spring of 2011. The estimated total project cost for this portion is \$175 million.

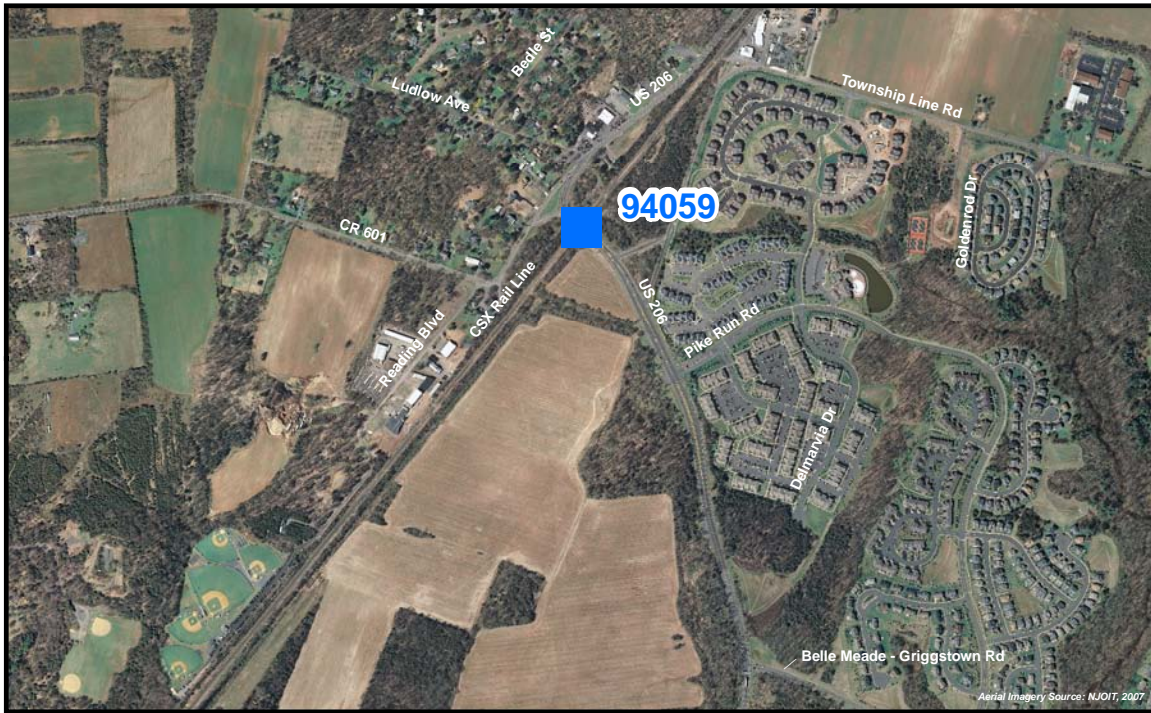
Source: Dana Hecht, Assistant to the Director, Division of Project Management, NJDOT (3/24/09)

CJTF - Project Status Report - Spring 2009 **US 206, CSX Bridge Replacement**

Route: US 206

Section: CSX Bridge Replacement

DBNUM: 94059



County: Somerset

Municipalities: Montgomery Twp.

Sponsor: NJDOT

This project provides for the replacement of the existing 85-foot, single-span bridge with a new 138-foot, single-span structure. The improvements will include a realignment of US 206 to the west with a roadway section that will provide for one 12-foot travel lane, 10-foot shoulder, and sidewalk in each direction. A new "T" intersection with traffic signal will be constructed for the relocated intersection of US 206 and CR 601. The improvements will upgrade US 206 and the adjacent roadways to improve their operational characteristics and safety throughout the project limits. The existing bridge will be open to traffic until the construction of the new structure is completed. This project will be bicycle/pedestrian compatible with shoulders and sidewalks provided on both sides of the roadway as well as crosswalks.

This project is programmed in the following TIP:

MPO	Plan	Phase	Year	Fund Source	Cost (in millions)
NJTPA	FY 2009-2012 TIP for New Jersey	CON	2010	STATE	\$18.65
					Total: \$18.65

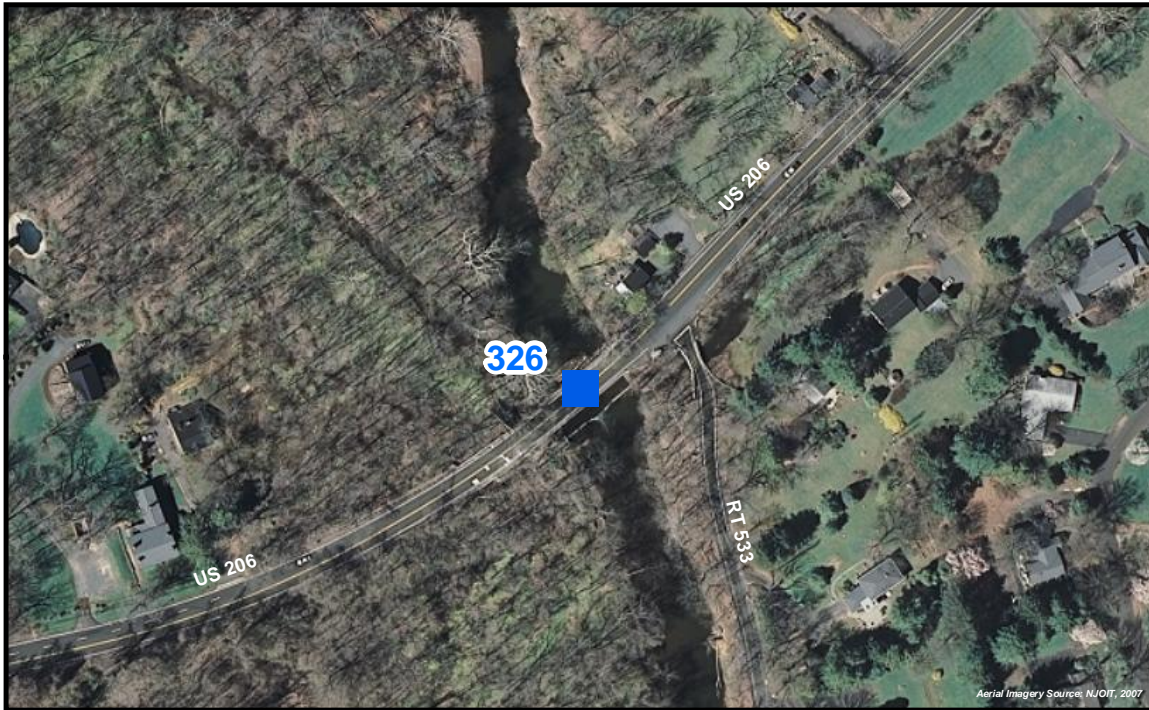
Note: see pages 8-11 for explanation of Phases; see page 11-12 for Fund Source definitions

CJTF - Project Status Report - Spring 2009
US 206, Stony Brook Bridges

Route: US 206

Section: Stony Brook Bridges

DBNUM: 326



County: Mercer

Municipalities: Princeton Twp.

Sponsor: NJDOT

This project will provide for the preservation of the 1792 stone arch structure carrying Route 206 over the Stony Brook as well as the rehabilitation of the adjacent flood plain structure. The preservation of the stone arch structure includes the removal of the existing spandrel walls and replacing them with a concrete core wall. The concrete core will be faced with the stone from the existing wall to replicate the existing appearance. The mortar will also be restored over the entire structure. The flood plain bridge superstructure will be replaced with prefabricated sections, and the substructure will be rehabilitated. It is proposed to replace the existing open balustrade with a vertical concrete wall with a one-inch relief.

This project is programmed in the following TIP:

MPO	Plan	Phase	Year	Fund Source	Cost (in millions)
DVRPC	FY 2009-2012 TIP for New Jersey	DES	2009	BRIDGE	\$1.15
DVRPC	FY 2009-2012 TIP for New Jersey	CON	2011	STATE	\$5.649
					Total: \$6.799

Note: see pages 8-11 for explanation of Phases; see page 11-12 for Fund Source definitions

CJTF - Project Status Report - Spring 2009
US 1, Middlesex County Corridor Study*

Route: US 1 **Section:** Middlesex County Corridor Study **DBNUM:** 93146

County: Middlesex **Municipalities:** North Brunswick Twp. **Sponsor:** NJDOT
South Brunswick Twp.

A Smart Growth Study is underway by Planning to identify a strategy for Route 1. The section of Route 1 through South Brunswick is only four lanes whereas the sections to the north and south of this section are six lanes. This causes a bottleneck effect and congestion.

The following special Federal appropriations were allocated to this project. FY06 SAFETEA-LU, \$2,500,000 (available 20% per year, ID# NJ266); \$3,500,000 (available 20% per year, ID# NJ251) and \$800,000 (available 20% per year, ID# NJ151).

The project is programmed in the following TIP:

MPO	Plan	Phase	Year	Fund Source	Cost (in millions)
NJTPA	FY 2009-2012 TIP for New Jersey	CD	2009		\$0
NJTPA	FY 2009-2012 TIP for New Jersey	CD	2009	HPP20	\$2
NJTPA	FY 2009-2012 TIP for New Jersey	CD	2010		\$0
NJTPA	FY 2009-2012 TIP for New Jersey	FA	2011	HPP20	\$4.476999
					Total: \$6.476999

Note: see pages 8-11 for explanation of Phases; see page 11-12 for Fund Source definitions

**Note: Although this project is not in a final construction or design phase, it has been included with a description due to expressed interest. The project is a Smart Growth Study being advanced by the planning unit at NJDOT.*

This project differs from DNBUM 08417 (see page 24) in that the Route 1 Bottleneck Relief project (DBNUM 08417) is a Concept Development Study which will focus on implementing solutions to address operational and safety deficiencies along Route 1 in South Brunswick Township. The project will integrate information from the Middlesex County Corridor Study to develop the best strategies to meet current and future needs within the corridor. Some readers may recall that the level of funding shown for DBNUM 08417 was listed under DBNUM 93146 in the Spring 2008 edition of the Planned Projects Status Report. At the time, DBNUM 08417 had not been formally established, and NJDOT determined that DBNUM 93146 was the best place to attribute the funding.

Source: Gary Leach, Project Engineer, NJDOT (3/23/09)

CJTF - Project Status Report - Spring 2009
Hillsborough Road and Homestead Road Bridges

Route: N/A

Section: Hillsborough Road and
Homestead Road Bridges

DBNUM: 08375



County: Somerset

Municipalities: Hillsborough Twp.

Sponsor: NJDOT

The overall condition of these structures is listed as critical. The bridges are structurally deficient. Hillsborough Road Bridge has a sufficiency rating of 28.3 and Homestead Road Bridge has a sufficiency rating of 31.6. The bridges have deteriorated to the point where they require replacement. The bridges will serve as detour routes for each other. For example, when Homestead Road Bridge is replaced, traffic will be diverted over Hillsborough Road Bridge. This project combines two earlier projects (DB numbers 00330, 00331).

This project is programmed in the following TIP:

MPO	Plan	Phase	Year	Fund Source	Cost (in millions)
NJTPA	FY 2009-2012 TIP for New Jersey	CON	2010	BRIDGE	\$4
					Total: \$4

Note: see pages 8-11 for explanation of Phases; see page 11-12 for Fund Source definitions

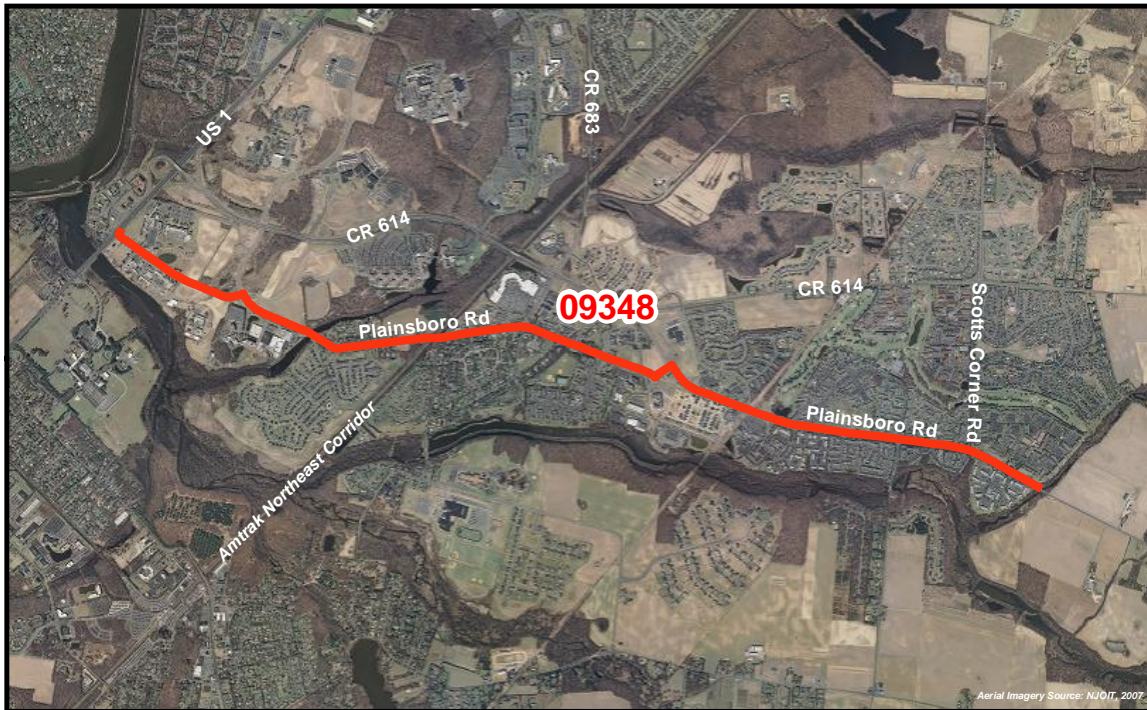
CJTF - Project Status Report - Spring 2009

Plainsboro Traffic Calming Project

Route: N/A

Section: Plainsboro Road

DBNUM: 09348



County: Middlesex

Municipalities: Plainsboro
Twp.

Sponsor: Plainsboro
Twp.

The project consists of the continuing implementation of the traffic calming improvements along Plainsboro Road. Included are improvements for pedestrian safety, vehicular access from adjacent neighborhoods, and alternative transportation usage.

The following special Federal appropriation was allocated to this project:
FY 2006 Appropriations Bill ID# NJ 281, \$700,000.

This project is programmed in the following TIP:

MPO	Plan	Phase	Year	Fund Source	Cost (in millions)
NJTPA	FY 2009-2012 TIP for New Jersey	ERC	2009	HPP20	\$0.7
					Total: \$0.7

Note: see pages 8-11 for explanation of Phases; see page 11-12 for Fund Source definitions

CJTF - Project Status Report - Spring 2009
Van Dyke Road and Greenwood Avenue Bridges over Trenton Branch

Route: N/A

Section: Van Dyke Road and
Greenwood Avenue
Bridges over Trenton Branch

DBNUM: 99315



County: Mercer

Municipalities: Hopewell Twp.

Sponsor: NJDOT

This bridge rehabilitation project will remove and replace the superstructure and maintain the existing cartway with minimum or no approach roadway improvements for both bridges. Repairs to the substructure will also be included. A temporary pedestrian structure will be provided at the Greenwood Avenue Bridge to provide pedestrian access during construction.

This project is programmed in the following TIP:

MPO	Plan	Phase	Year	Fund Source	Cost (in millions)
DVRPC	FY 2009-2012 TIP for New Jersey	CON	2009	STP-STU	\$4.816
					Total: \$4.816

Note: see pages 8-11 for explanation of Phases; see page 11-12 for Fund Source definitions

NJ Turnpike Authority Projects

TABLE OF CONTENTS

NJ Turnpike Widening	47
Turnpike Interchange 8A to Route 130 Connection	48

Note: New Jersey Turnpike project descriptions were given by the New Jersey Turnpike Authority.

CJTF - Project Status Report - Spring 2009 NJ Turnpike Widening

Routes: NJTPK

Section: Interchange 6 to
Interchange 9

DBNUM: TPK0501



This proposed widening program will provide for the construction of approximately 25 miles of roadway widening and improvements to the New Jersey Turnpike from the vicinity of Interchange 6 in Mansfield Township, Burlington County (where the mainline roadway consists of three lanes in each direction) to the existing ten-lane dual-dual portion of the Turnpike at Interchange 8A in South Brunswick Township, Middlesex County. The proposed widening program will also entail the addition of a third lane to each of the existing outer roadways of the Turnpike for a distance of approximately ten miles between Interchange 8A and Interchange 9 in East Brunswick, Middlesex County, and improvements to each of the interchanges within the project limits. When completed, the proposed widening will result in a 12-lane (six lanes in each direction) dual-dual roadway from Interchange 6 to Interchange 9, capable of accommodating projected traffic needs through the year 2032.

Final design was initiated in 2007 and is expected to take up to three years to complete. Construction is anticipated to begin in the summer of 2009 and be completed in 2013. (Source: NJ Turnpike Authority, 3/19/09)

CJTF - Project Status Report - Spring 2009
Turnpike Interchange 8A to Route 130 Connection

Routes: NJTPK	Section: Interchange 8A to Route 130 Connection	DBNUM: N/A
----------------------	---	-------------------

[No map at this time—project is under development.]

County: Middlesex	Municipalities: Various	Sponsor: NJTA
--------------------------	--------------------------------	----------------------

This project will address significant traffic congestion outside of Interchange 8A. The project limits include the section of Route 32 between Interchange 8A and the interconnection of Route 32 with Route 130. Middlesex County has requested that the NJTA undertake appropriate improvements on the basis that a majority of the traffic within the corridor is destined to or from the Turnpike. Design and/or construction dates are not yet known for this project. The project is included in the NJTA's ten-year Capital Investment Program.

(Source: NJ Turnpike Authority, 3/19/09)

Transit TIP Projects

TABLE OF CONTENTS

Monmouth-Ocean-Middlesex County Passenger Rail (Earmark)	51
Section 5310 Program	51
Section 5311 Program	52
Small / Special Services Program	52
South Brunswick Transit System (Earmark)	53
Study and Development	53
Transit Rail Initiatives	54

Transit projects advance differently than NJDOT projects; as a result, both capital and Study and Development-type transit initiatives are profiled here, in the Transit section of the report. Funding is listed only for those projects in capital program phases.

CJTF - Project Status Report - Spring 2009
Monmouth-Ocean-Middlesex County
Passenger Rail (Earmark)

New Jersey Transit Project

DBNUM: T560

Funding is provided for SAFETEA-LU earmarks for Monmouth-Ocean-Middlesex County Passenger Rail Section 5309 New Starts (Earmark).

This project is funded under the provisions of Section 13 of P.L. 1995, c.108.

County: Various

Municipalities: Various

Sponsor: NJ Transit

CJTF - Project Status Report - Spring 2009
Section 5310 Program

New Jersey Transit Project

DBNUM: T150

This program provides for the purchase of **small buses or van-type vehicles** for agencies that serve the elderly and persons with disabilities. Formerly known as the Section 16 Program.

This project is funded under the provisions of Section 13 of P.L. 1995, c.108. MATCH funds are provided from the State.

County: Various

Municipalities: Various

Sponsor: NJ Transit

CJTF - Project Status Report - Spring 2009
Section 5311 Program

New Jersey Transit Project

DBNUM: T151

This program provides funding for **rural public transportation programs**.
MATCH funds are provided from NJ TRANSIT and local funds.

This project is funded under the provisions of Section 13 of P.L. 1995, c.108.

County: Various

Municipalities: Various

Sponsor: NJ Transit

CJTF - Project Status Report - Spring 2009
Small / Special Services Program

New Jersey Transit Project

DBNUM: T120

Funding is provided for NJ TRANSIT efforts which initiate or promote transit solutions to reduce congestion, manage transportation demand and improve air quality. Included are State funds for the Vanpool Sponsorship Program, Transportation Management Association Program, and Federal funds for **East Windsor Community Shuttle operating support**. Funding is also provided for capital acquisition/operating expenses for the Community Shuttle Program, Bike/Transit facilitation, and other activities that improve air quality and help reduce congestion. This project is funded under the provisions of Section 13 of P.L. 1995, c.108.

Toll Credit will be used as the non-federal match. An explanation of toll credit can be found in the Introduction Section of the STIP.

County: Various

Municipalities: Various

Sponsor: NJ Transit

**CJTF - Project Status Report - Spring 2009
South Brunswick Transit System (Earmark)**

New Jersey Transit Project

DBNUM: T522

Funding is provided for SAFETEA-LU earmarks for the South Brunswick Transit System. Toll Credit will be used as the non-federal match. An explanation of toll credit can be found in the Introduction Section of the STIP.

This project is funded under the provisions of Section 13 of P.L. 1995, c.108.

County: Middlesex

Municipalities: South Brunswick
Twp.

Sponsor: NJ Transit

**CJTF - Project Status Report - Spring 2009
Study and Development***

New Jersey Transit Project

DBNUM: T88

This element provides for system and infrastructure planning studies to ready projects for design, as well as demand forecasting and other related planning work. One of the initiatives being studied is the feasibility of a possible **Bus Rapid Transit (BRT) system on the Route 1 corridor in Mercer County.**

This project is funded under the provisions of Section 13 of P.L. 1995, c.108.

County: Various

Municipalities: Various

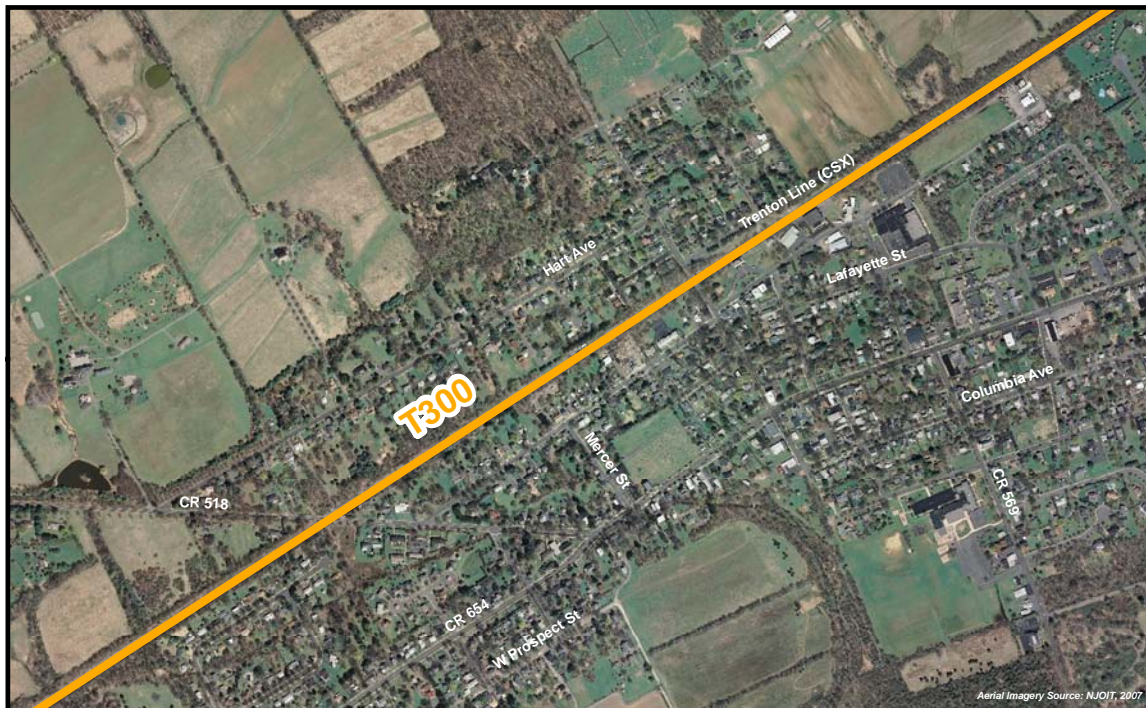
Sponsor: NJ Transit

**Note: This project includes the planning phase of project development for the Route 1 BRT project.*

CJTF - Project Status Report - Spring 2009 Transit Rail Initiatives*

New Jersey Transit Project

DBNUM: T300



County: Various

Municipalities: Various

Sponsor: NJ Transit

This program provides funding for transit expansion projects, including new fixed guideway, new station construction and rolling stock acquisition. Also included are FTA new starts projects authorized under New Jersey Urban Core or SAFETEA-LU.

Potential projects in this category include (in no rank order): HBLR Extension to 8th Street Bayonne; Northern Branch Rail; HBLR Extension to Secaucus; HBLR Secaucus-Meadowlands Connector; Passaic-Bergen rail service on the NYS&W east of Hawthorne using Diesel Multiple Unit (DMU) passenger equipment; Restoration of commuter rail service on the NYS&W west of Hawthorne; Restoration of commuter rail service to Lackawanna Cutoff; Port Morris Improvements; Rail Spur to the Meadowlands Sports Complex; West Shore--Hoboken to West Haverstraw; NERL Elizabeth Segment from NJ TRANSIT'S Northeast Corridor Midtown Elizabeth Station to Newark Liberty International Airport via the Elizabeth Waterfront; **Restoration of commuter rail service on the West Trenton line; River LINE LRT Capitol Extension; Second Phase of River LINE LRT/PATCO Extension; Route 1 BRT**, Second Phase of NERL (Newark Penn Station to Newark Liberty International Airport); **Commuter rail extension in Monmouth and Ocean Counties**; Extension of Cape May Seashore Line north to Hammonton (to Atlantic City Rail Line); Commuter Rail extension to Phillipsburg, improvements on the Atlantic City Rail Line, new

Portal Bridge, **new rail station improvements such as Atlantic City Line/River LINE connection, River Line Cramer Station**, Moynihan Station, Penn Station New York Platform extensions, Penn Station New York Central Concourse and Smart Card Technology Program along with other new system-wide, rail, bus, and light rail initiatives arising during the year. Funding is also provided to advance projects dependent on federal formula funds, federal earmarks, other non-federal (including private) funding, and/or state resources available beyond planned levels.

Toll Credit will be used as the non-federal match. An explanation of toll credit can be found in the Introduction Section of the STIP. In addition, expenditures are for costs of projects in specific years only.

This project is funded under the provisions of Section 13 of P.L. 1995, c.108.

County: Various

Municipalities: Various

Sponsor: NJ Transit

**Note: This project includes funding for engineering design and construction of the Route 1 BRT project.*

TIP - Potential Projects (Study and Development)

The Study and Development (S&D) process is how NJDOT currently performs the early phases of project development and assessment. See “NJDOT Project Development Process” (page 8) for more information. Following is the list of such projects as of March 2009.

Table 11: TIP – Potential Projects (Study and Development)

Project Name	Pipeline Status	DBNUM
CR 533, Mercer County Signal Project	FY 2009-2010 Study and Development Program, Local Preliminary Design	D0702
CR 546, Washington Crossing-Pennington Road Bridge over Conrail	FY 2009-2010 Study and Development Program, Local Preliminary Design	D9906
CR 546, Washington Crossing-Pennington Road over Woolsey's Brook	FY 2009-2010 Study and Development Program, Local Preliminary Design	D9907
CR 571, Princeton Hightstown Road Improvements	FY 2009-2010 Study and Development Program, Local Preliminary Design	D0701
I-295, Northbound Approach to US 1 Exits, ITS Improvements	FY 2009-2010 Study and Development Program, Feasibility Assessment	06358
I-295, Rising Sun Road to US 1, ITS Improvements	FY 2009-2010 Study and Development Program, Concept Development	06362
NJ 31, Bridge Over CSX Railroad	FY 2009-2010 Study and Development Program, Concept Development	08355
NJ 31, Ewingville/Upper Ferry Road to CR 518, TDD Project (3G)	FY 2009-2010 Study and Development Program, Feasibility Assessment	159
NJ 33, Washington Township Bypass	FY 2009-2010 Study and Development Program, Preliminary Design	99368A
Orchard Road Connector	FY 2009-2010 Study and Development Program, Local Concept Development	06381
US 1, Franklin Corner Road	FY 2009-2010 Study and Development Program, Concept Development	027
US 1, Mercer County Congestion Management & Concept Development Study	FY 2007-2008 Study and Development Program, Concept Development	01330
US 1, Middlesex County Operational Improvements	FY 2009-2010 Study and Development Program, Feasibility Assessment	93146A
US 1, Southbound, Nassau Park Boulevard to I-95, Safety Improvements	FY 2009-2010 Study and Development Program, Feasibility Assessment	01330A

Table 11: TIP – Potential Projects (Study and Development) (continued)

Project Name	Pipeline Status	DBNUM
US 1, South Brunswick, Drainage Improvements	FY 2009-2010 Study and Development Program, Feasibility Assessment	93253
US 206, Cherry Valley Road Intersection Improvements	FY 2009-2010 Study and Development Program, Concept Development	01320
US 206, Hillsborough-Montgomery Gateway	FY 2009-2010 Study and Development Program, Concept Development	08351
US 206, North of Quaker Road, Drainage Improvements	FY 2009 Tier 2 Study and Development Program	04319
Millstone Valley Scenic Byway	FY 2007-2008 Study and Development Program	04334
NJ 29, Washington Crossing State Park, Scenic Byway Improvements	FY 2007-2008 Study and Development Program	00362L
NJ 33, US 1 to US 130 Corridor Study	FY 2007-2008 Study and Development Program	04302D
US 1 Business, Brunswick Circle	FY 2007-2008 Study and Development Program	04316A
I-287, Middlesex/Somerset, Raritan River Crossing Needs Analysis	FY 2007, Concept Development	9169
NJ 29, Hopewell Township, Drainage Improvements	FY 2006-2010 Project Pool	05334
US 1, Bicycle/Pedestrian Improvements	FY 2005-2006 Study and Development Program	97025
US 206, Princeton, Stony Brook to Birch Avenue, Bicycle Improvements	FY2005-06 Study and Development Program	97027
Rocky Brook Bikeway	FY2002-2003 Study and Development Program	X185C
NJ 33/US 130, Washington Township Access Management Study	FY2000-01 Study and Development Program	99368
I-95, Vicinity of NJ 29 to US 1, Resurfacing	Pipeline 3, Construction Awarded	03324
I-295, I-195 to US 1, Rehabilitation	Pipeline 3, Under Construction	03325
US 1, Shipetaukin Creek, Bridge Deck Replacement	Pipeline 3, Under Construction	04384
CR 518, D&R Canal Bridge	Problem Statement	97096
I-95, Federal City Road	Problem Statement	9363
I-287, ITS Data Collection System	Problem Statement	9169D
I-287, Wayfinding Signage	Problem Statement	9169C
NJ 27, Cozzens Lane	Problem Statement	9298
NJ 27, Huron Road/Bennetts Lane	Problem Statement	9299
NJ 27, Pavement—South Brunswick to New Brunswick	Problem Statement	98462
NJ 31, Hopewell	Problem Statement	94084
NJ 31, Pennington Circle to US 202	Problem Statement	165

Table 11: TIP – Potential Projects (Study and Development) (continued)

Project Name	Pipeline Status	DBNUM
NJ 31, Stony Brook Bridge	Problem Statement	98360
NJ 33/US 130, Assunpink Creek	Problem Statement	00322
Raritan River Bicycle/Pedestrian Bridge	Problem Statement	9169E
Sidewalk Installation, Franklin/Piscataway	Problem Statement	9169G
Transit Service Enhancement, Somerset/Middlesex	Problem Statement	9169H
Transit Signal Priority, Somerset/Middlesex	Problem Statement	9169A
US 1, D&R Canal	Problem Statement	94054
US 130, I-195 to NJ 32, ITS Improvements	Problem Statement	06364
US 130, Cedar Brook, Drainage Improvements	Problem Statement	93237
US 130, Rocky Brook	Problem Statement	99394
US 206, Mansgrove Road to Cherry Valley Road	Problem Statement	06397
US 206, Mercer County, Independence Avenue to Mountain Avenue	Problem Statement	96051
US 206, Princeton Twp., Mountain Avenue to Cherry Valley Road	Problem Statement	96052
US 206/US 1 Business, Shabakunk Creek Bridge	Problem Statement	95109
High Point to Cape May Designated Bicycle Touring Route (Central)	Problem Statement	02358
I-195, Mercer/Monmouth/ Ocean, Richardson Road to CR 537	Problem Statement	97014
I-195, New Jersey Turnpike Interchange Improvements	Problem Statement	97014A
Lanning Boulevard, Mercer County	Problem Statement	02324
NJ 29, Ewing Township to Lambertville, Rehabilitation	Problem Statement	03333
NJ 33, Big Bear Brook, Drainage Improvements	Problem Statement	98410
NJ 133, Wyckoffs Mill Road	Problem Statement	99324
US 1, Lawrence Township, Noise Barriers	Problem Statement	98375
US 130, Corridor No. 2, Crosswicks Creek to US 1	Problem Statement	9161
Princeton-Hightstown Road, CR 571	Problem Statement (awaiting lead agency decision)	L086
US 130, Intersection Improvements at NJ 32	Problem Statement, Tier 2	05321
US 206, Ewing Street, Safety Improvements	Problem Statement, Tier 2	04356

Source: FY 2009-2012 TIP for New Jersey

**This list is for general, initial information only. It is based on DVRPC's review of the TIP databases and brief additional research. Please contact NJDOT, DVRPC, or NJTPA for more information. (See page 3.)*

Projects Identified by Participants in the Route 1 Regional Growth Strategy (R1RGS) Effort

The Route 1 Regional Growth Strategy (R1RGS) effort is a study underway by NJDOT in partnership with a diverse consultant group consisting of members from AECOM Transportation, PB Americas, URS Corporation, the Voorhees Transportation Center, PlanSmart NJ, Weiss Consulting, and Michael Gallis & Associates. The study has involved and will continue to incorporate extensive outreach activities. It examines demographics in the Route 1 area including housing, population, and employment, as well as considering travel, land use, and economic indicators. The ultimate goal of the R1RGS effort is to advance and implement a final set of recommendations to guide smart growth objectives in the Route 1 region.

In addition to a public forum for decision makers who wish to help shape growth, the R1RGS provides Forum members with a useful set of up-to-date information regarding transportation and development projects in the Route 1 area. The following information is summarized from documents provided by the R1RGS team and includes recent transportation projects completed, planned, or underway in Forum municipalities. Municipal and County officials contributed the information in the tables below to the consultant team for the R1RGS.

Table 12: R1RGS Municipal Transportation Project Status Updates

Municipality	Updates
Lawrence Township	<ul style="list-style-type: none"> Working with NJDOT and NJ Transit to make provisions that would accommodate the proposed Bus Rapid Transit system with the Quaker Bridge Mall expansion project.
Plainsboro Township	<ul style="list-style-type: none"> Intersection improvements related to development of the Princeton Healthcare System Medical Campus Campus Road extension provides a new road connecting Campus Road to Research Way/College Road East Plainsboro is making efforts to expand and enhance transit service to the community.
Princeton Borough	<ul style="list-style-type: none"> Launch of Free Bee Jitney providing downtown loop service connecting to the Princeton Dinky Station Plans to expand Princeton University's on-campus Jitney service.
Princeton Township	<ul style="list-style-type: none"> Loop road to eliminate left turns at US 206 and Cherry Valley Road.
South Brunswick Township	<ul style="list-style-type: none"> US 1 intersection improvements scheduled to begin in 2009 Final section of CR 522 will begin construction in 2009 The South Brunswick Township Smart Shuttle will begin service for commuters in 2009.
West Windsor Township	<ul style="list-style-type: none"> Alexander Road Bridge opened in December, 2008. Improvements included a roundabout to calm and improve the flow of traffic Mercer County Bridge over Big Bear Brook on CR 535 was replaced.

Source: Email from Robert Williams, Voorhees Transportation Center

Table 13 consists of road projects proposed by municipal officials and other stakeholders participating in the R1RGS effort. The consultant team intended this list merely as a catalogue of the ideas for road improvements that have been proposed in the Forum area over the years.

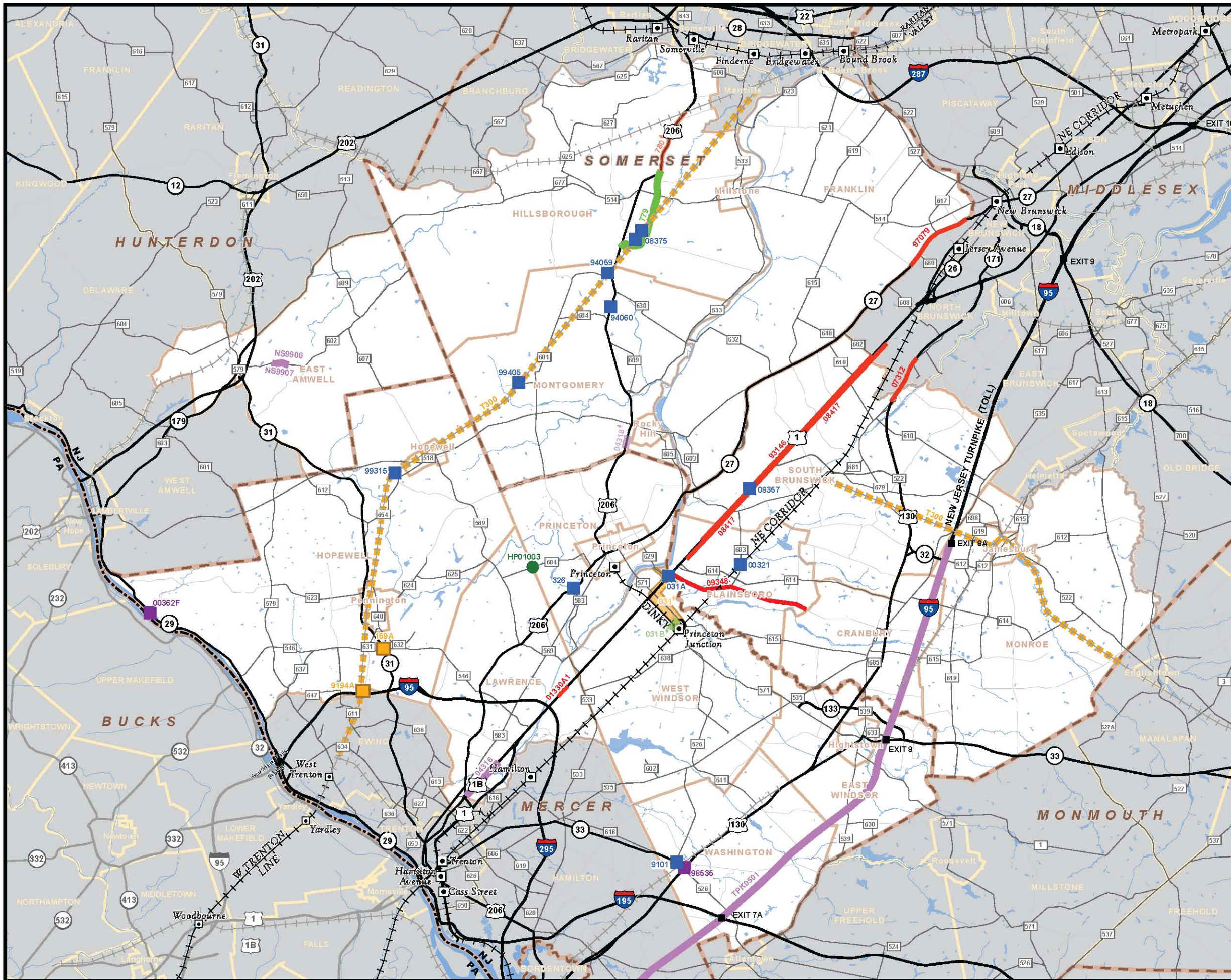
Table 13: Proposed Road Projects in the Forum Area

Township	Project	Status
Cranbury	Liberty Way	Proposed
Cranbury	Old Trenton Road extension - Main Street (CR535) to US 130	Not available
Cranbury	Northern connector road from North Main Street to Plainsboro Road	Not available
Cranbury	Southern connector road from Cranbury Neck Road to US 130/Hightstown Road)	Not available
Cranbury	New north-south collector road from South River Road to Station Road	Not available
Cranbury	Dey Road-Campus Drive connector road	Not available
Franklin, New Brunswick	NJ 27 corridor improvements	Not available
Franklin	South Middlebush Road bypass	Not available
Franklin	Davidson Avenue extension from current terminus to Amwell Road near Van Cleef Road	Not available
Franklin	Pierce Street extension from Elizabeth Avenue to Davidson Avenue	Not available
Franklin	Middlebush area circulation improvements	Not available
Franklin	Other intersection improvements in Franklin	Not available
Franklin	I-287 mobility improvements	Study complete
Jamesburg	Jamesburg bypass	Not available
Lawrence	Brunswick Pike boulevard	NJDOT Study and Development
Lawrence	US 206, Lawrence, traffic flow improvements - 14 intersections	Study complete
Lawrence	Reconstruct US 1 & Franklin Corner Road intersection	Study and Development
Lawrence, W. Windsor	Safety improvements along southbound US 1 between Nassau Park Blvd. and I-95. Add frontage road / connector road to residential area	Study and Development
Lawrence	New overpass of US 1	Not available
Lawrence, W. Windsor	Under- / Over-pass at Nassau Park Blvd.	Not available
Lawrence, W. Windsor	US 1 corridor improvements between Quaker Bridge Road and Alexander Rd	Not available
Monroe	Spotswood/Gravel Hill Road Extension from Jamesburg-Englishtown Road to Schoolhouse Road	Not available
Monroe	Schoolhouse Road Extension b/w 90 degree turn in Schoolhouse Rd & Spotswood-Englishtown Road opposite Rue Rd	Not available
Monroe	Federal Road Extension west to intersect	Not available

Table 13: Proposed Road Projects in the Forum Area (continued)

Township	Project	Status
	with Applegarth Road opposite Halsey-Reed Road	
Monroe	NJ 33 boulevard	Not available
Monroe, Cranbury	Exit 8A area circulation improvements	Not available
Monroe, Cranbury	Widen Turnpike between Exit 6 and Exit 8A	Not available
North Brunswick	US 1 service road providing access to shopping areas along SB US 1 b/w Cozzens Ln to Finnegan's Ln	Not available
North Brunswick	Extend Finnegan's Lane to US 130	Not available
North Brunswick	US 1 intersection improvements at Adams Lane and Cozzens Lane	Not available
Plainsboro	Scudders Mill - Plainsboro Road Connector	Not available
Plainsboro	US 1 NB service road b/w Scudders Mill Rd and College Rd East at Research Way	Not available
Plainsboro, S. Brunswick, N. Brunswick	US 1 corridor improvements between Sayre Drive and Finnegan's Lane	Not available
Princeton Twp.	Province Line Road Extension from Rosedale Road to Cherry Valley Road	Not available
Princeton Twp.	Bunn Drive extension from current terminus to proposed Princeton Bypass	Not available
Princeton Twp.	US 206, Princeton, corridor improvements	Study complete
Princeton Twp.	Princeton Bypass - Link between US 206/Hillsborough Bypass, NJ 27 and US 1 at NJ 92 (proposed new route – now canceled)	Not available
South Brunswick	NJ 27 boulevard in Kendall Park	Not available
South Brunswick	Northumberland Loop Road extension from US 1 to CR 522 just east of New Road	Not available
South Brunswick	CR 522 connection between US 1 and NJ Turnpike (Alternative to NJ 92)	Not available
South Brunswick, North Brunswick	Finnegan's Lane extension east-west from NJ 27 to US 130	Not available
South Brunswick	US 1 Bottleneck relief - Plainsboro to North Brunswick	Not available
Trenton, Ewing, Lawrence	Mercer Crossing area circulation improvements, e.g., Calhoun Street extension	Not available
West Windsor	Extend Canal Pointe Boulevard to Nassau Park	Not available
West Windsor	Meadow Road re-alignment and related improvements	Proposed
West Windsor	Penns Neck and Millstone River bridge improvements	Proposed
West Windsor	CR 571 corridor improvements - Princeton Junction	Not available

Source: Robert Williams, Voorhees Transportation Center



Central Jersey Transportation Forum

Figure 1: Planned Projects

PROJECTS*

- Bridge Replacement / Rehabilitation
- Intersection Improvement
- Pedestrian Bridge
- New Roadway
- Rail Initiative
- Roadway Improvement
- Study / Analysis
- Improvement Area

♦ Tier 2 Project - Not Currently Funded (symbolized with transparency)

RAIL

- Station

++++ Commuter +++ Freight

NATURAL FEATURES

~~~~~ River or Stream    Lake

### BOUNDARIES

- State
- CJTF Member Municipality
- County
- Other Municipality

\* For more information, see the Planned Projects Status Report for regular updates on land use projects in the vicinity of Route 1 and transportation projects funded by the federal government and other bodies. Also visit: [www.dvrpc.org](http://www.dvrpc.org) and [www.njtpa.org](http://www.njtpa.org)

**SOURCES:** DVRPC, NJDOT, NJDEP, PennDOT  
This map was developed using New Jersey Department of Environmental Protection Geographic Information System digital data, but this secondary product has not been verified by NJDEP and is not state-authorized.



0 1.25 2.5 5  
Miles

**dvrpc**  
DELAWARE VALLEY  
REGIONAL  
PLANNING COMMISSION





## Index of Projects by Database Number (DBNUM)

This is an index of the projects with full page descriptions in the Planned Project Status Report. These are projects far along in development.

**Table 14: Index of Projects**

| DBNUM   | Name                                                                              | Page |
|---------|-----------------------------------------------------------------------------------|------|
|         | <b>Highway TIP Projects</b>                                                       |      |
| 00321   | CR 683 Schalks Station Road Bridge                                                | 18   |
| 00362F  | NJ 29 Moores Station Canal Crossing                                               | 22   |
| 01330A1 | US 1 Southbound, Quaker Bridge Mall Overpass                                      | 31   |
| 031A    | US 1 Millstone River, Bridge Replacement                                          | 30   |
| 04316   | US 1 Business, Brunswick Circle to Texas Avenue                                   | 28   |
| 07312   | US 130 Southbound, North of Deans Road to Vicinity of Lawrence Brook, Resurfacing | 33   |
| 08357   | US 1 Heathcote Brook Bridge                                                       | 29   |
| 08375   | Hillsborough Road and Homestead Road Bridges                                      | 41   |
| 08417   | US 1 Bottleneck Relief                                                            | 26   |
| 09348   | Plainsboro Traffic Calming Project                                                | 42   |
| 146     | NJ 27 Six Mile Run Bridge (3E)                                                    | 20   |
| 159A    | NJ 31 Pennington Circle Safety Improvements                                       | 23   |
| 326     | US 206 Stony Brook Bridges                                                        | 39   |
| 779     | US 206 Bypass, Mountain View Road to Old Somerville Road (14A & 15A)              | 36   |
| 9101    | NJ 33 Conrail Bridge Removal                                                      | 24   |
| 9194A   | I-95 Reed Road Wetland Mitigation Site                                            | 19   |
| 93146   | US 1 Middlesex County Corridor Study                                              | 40   |
| 94059   | US 206 CSX Bridge Replacement                                                     | 38   |
| 94060   | US 206 Crusers Brook Bridge (41)                                                  | 35   |
| 97079   | NJ 27 Renaissance 2000, Bennetts Lane to Somerset Street                          | 21   |
| 98535   | US 130 Pedestrian Bridge, Robbinsville Township                                   | 32   |
| 99315   | Van Dyke Road and Greenwood Avenue Bridges over Trenton Branch                    | 43   |
| 99405   | CR 602 Camp Meeting Avenue Bridge over Trenton Line                               | 15   |
| HP01010 | Princeton Township Roadway Improvements                                           | 25   |
| NS9906  | CR 602 Wertsville Road Bridge (E-174) over Tributary of Back Brook                | 17   |
| NS9907  | CR 602 Wertsville Road Bridge (E-166) over Back Brook                             | 16   |
|         |                                                                                   |      |
|         | <b>New Jersey Turnpike Authority</b>                                              |      |
| TPK0501 | New Jersey Turnpike Widening                                                      | 47   |
|         | Turnpike Interchange 8A to US 130 Connection                                      | 48   |
|         |                                                                                   |      |
|         | <b>Transit TIP Projects</b>                                                       |      |
| T88     | Study and Development                                                             | 53   |
| T120    | Small / Special Services Program                                                  | 52   |
| T150    | Section 5310 Program                                                              | 51   |
| T151    | Section 5311 Program                                                              | 52   |
| T300    | Transit Rail Initiatives                                                          | 54   |
| T522    | South Brunswick Transit System (Earmark)                                          | 53   |
| T560    | Monmouth-Ocean-Middlesex County Passenger Rail (Earmark)                          | 51   |

Source: FY 2009-2012 TIP for New Jersey





# Major Development Projects in the US 1 Corridor

---

## Overview of Projects

The effects of land use decisions do not end at parcel lines. The type, size, and scale of development directly impact the local transportation network and contribute to problems or solutions that culminate on larger, regional routes such as US 1. The character of development can also influence the multi-modalism of a given area by providing opportunities to decrease dependence on personal vehicles. Similarly, land use choices impact the roadways, economic vitality, environmental resources, and residents of both the immediate neighborhood and the broader multi-municipal community. It is important that local communities work together to make informed decisions that will benefit the entire Forum region. Linking land use and transportation projects can help facilitate this interaction.

This section provides information about development projects proposed or recently completed by public or private entities in the vicinity of US 1. The projects are arranged by municipality in the descriptive text that follows. Some projects are occurring in communities outside of the Forum area, however, it is expected that these developments will impact Route 1 and therefore, they deserve mention.

An earlier version of this information was distributed in the Spring, 2008 Planned Projects Status Report. It covered the period from June 2007 to May 2008. The summary included here covers activity from June 2008 to March 2009. Information was gathered from local newspapers such as the *Princeton Packet* and the *Times of Trenton*, as well as various websites, including those for each Forum municipality. DVRPC staff also relied on development information gained through a survey of local communities administered by a consultant and completed for the NJDOT Route 1 Regional Growth Strategy effort.

Full references or copies of the articles are available upon request. This information will also be posted on the DVRPC web page for the Forum.

Information on land use projects in nine Forum communities as well as two nearby townships is compiled in the following spreadsheet. Forum communities with no major projects included at this time are listed below:

*Cranbury Township*  
*East Amwell Township*  
*East Windsor Township*  
*Hightstown Borough*  
*Hillsborough Township*  
*Hopewell Borough*

*Jamesburg Borough*  
*Millstone Borough*  
*Monroe Township*  
*Pennington Borough*  
*Robbinsville Township*  
*Rocky Hill Borough*

With few exceptions, the development projects listed in last year's report have remained at the same stage of development. **Skillman Village**, a mixed-use development in Montgomery Township, is still in the planning phase but moved forward considerably as the cleanup of this site was recently completed. The **UMCP Relocation** project, which entailed the construction of a medical campus on 160 acres in Plainsboro Township, has moved forward from the planning stage to construction, with completion expected in late 2011.

Fourteen new developments were added to the spreadsheet this year. Most notably are two new mixed use developments in Franklin Township, two new projects in West Windsor Township, and several approved projects in South Brunswick Township. **Elements at West Windsor**, one of the new projects featured in this year's report, is currently under construction and will include over 150 single family homes along CR 535.

If the developments shown in the accompanying spreadsheet go forward as planned (using lower estimates where a range was given), the Forum communities are likely to experience the transportation and land use impacts of over five million square feet of commercial space (including retail and office), one hotel, two new medical buildings and one new medical campus, and at least 5,000 residential housing units. Taken as a whole, the transportation and land use impacts of these development projects are significant and deserve attention.

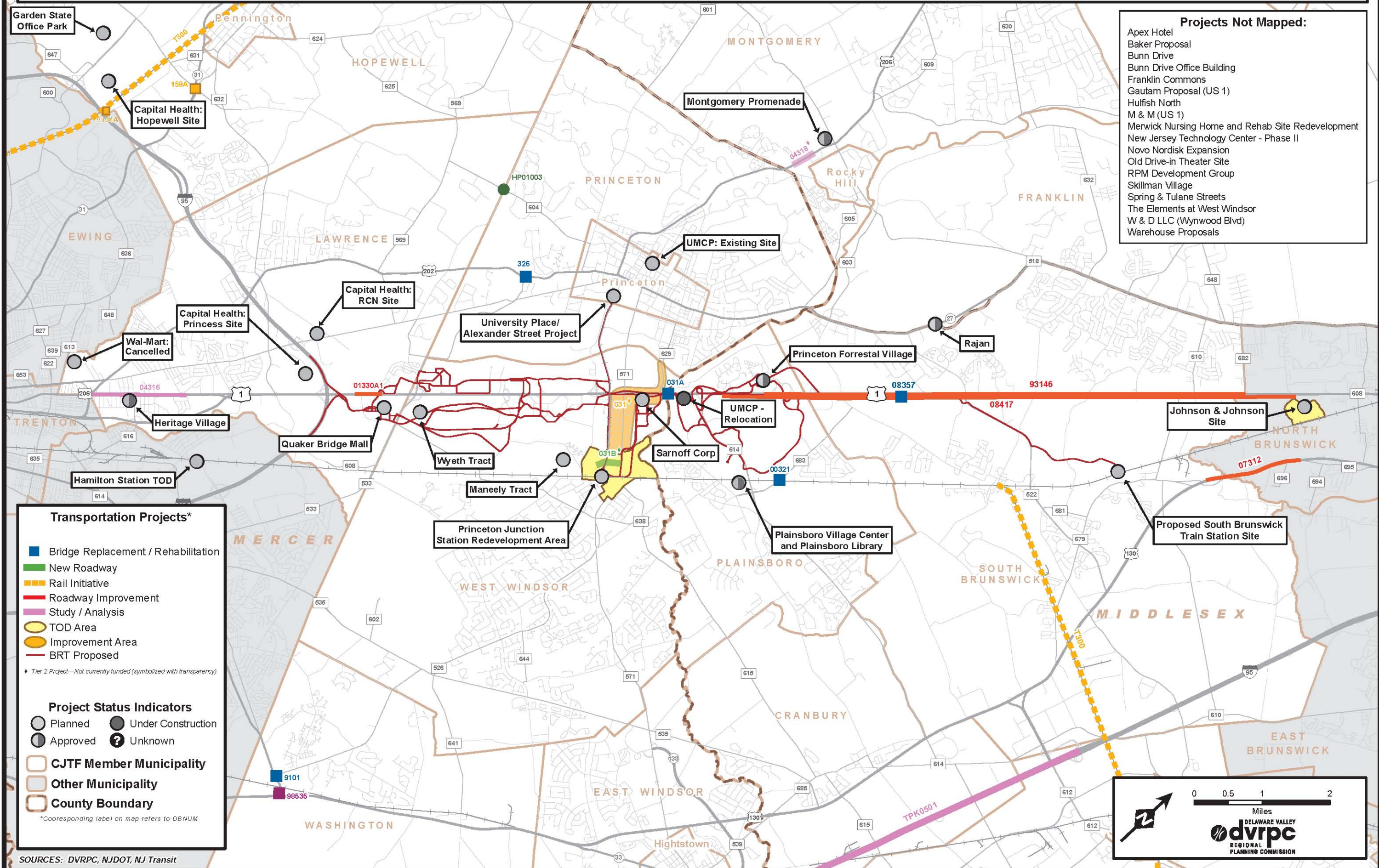
### **Relevant Studies and Policy Documents**

- NJDOT Route 1 Regional Growth Strategy  
(See [policy.rutgers.edu/vtc/rgs/](http://policy.rutgers.edu/vtc/rgs/))
- NJDOT Long-Range Plan  
(See [www.state.nj.us/transportation/works/njchoices/](http://www.state.nj.us/transportation/works/njchoices/))
- DVRPC Long-Range Plan (Publication # 09047C)
- NJTPA Long-Range Plan (See [www.njtpa.org/plan/LRP2035/default.aspx](http://www.njtpa.org/plan/LRP2035/default.aspx))
- Advancing Inter-Modal Freight Opportunities Within Central Somerset County (Contact the Somerset County Planning Division for copies; see [www.co.somerset.nj.us/planweb/pbmapspub.htm](http://www.co.somerset.nj.us/planweb/pbmapspub.htm))
- Mercer Crossings Transportation Study (DVRPC Publication #07039)
- New Jersey State Plan/Cross Acceptance  
(See [www.state.nj.us/dca/divisions/osg/plan/](http://www.state.nj.us/dca/divisions/osg/plan/);  
[www.state.nj.us/dca/divisions/osg/plan/ca.html](http://www.state.nj.us/dca/divisions/osg/plan/ca.html))
- NJDOT Exit 8A Study (See [www.tcnj.edu/~mluc/transportation/documents/Exit8A07.19.072ndPrinting.pdf](http://www.tcnj.edu/~mluc/transportation/documents/Exit8A07.19.072ndPrinting.pdf))
- CR 571 Corridor Study (DVRPC Publication #07037)
- NJDOT Route 206 Visioning Study (Contact NJDOT at [www.state.nj.us/transportation/](http://www.state.nj.us/transportation/) for more information)
- Princeton Campus Plan (See [www.princeton.edu/campusplan/](http://www.princeton.edu/campusplan/))



# CENTRAL JERSEY TRANSPORTATION FORUM

Figure 2: Development & Transportation Projects on US 1







Overview of Public and Private Development Projects on US 1

This list covers major land use projects that will affect transportation in the US 1 corridor as of March, 2009.

Table 15: Summary of Major Development Projects

| <u>Name</u>                                      | <u>Municipality</u> | <u>Type</u>                                   | <u>Land Use</u>                   | <u>Size</u>                                                                                                                                                   | <u>Status</u>                                      | <u>Year Complete</u>         |
|--------------------------------------------------|---------------------|-----------------------------------------------|-----------------------------------|---------------------------------------------------------------------------------------------------------------------------------------------------------------|----------------------------------------------------|------------------------------|
| Franklin Commons                                 | Franklin            | Mixed Use Development                         | Mixed Use                         | 66 apartments above retail stores                                                                                                                             | Approved                                           | Unknown                      |
| RPM Development Group                            | Franklin            | Mixed Use Development                         | Mixed Use                         | 437 residential units, 94,000 sq ft commercial<br>128 units of affordable housing                                                                             | Unknown                                            | Unknown                      |
| Hamilton Station Transit Oriented Development    | Hamilton            | Transit Oriented Development                  | Mixed Use                         | 300 residential units<br>125,000 sq ft retail, 200,000 sq ft office<br>200 room hotel                                                                         | Repealed<br>Pending Study                          | Unknown                      |
| Capital Health Systems Relocation: Hopewell Site | Hopewell            | Medical                                       | Community Service                 | 165 acres, 656,000 sq ft hospital<br>6-story medical office building                                                                                          | Planning                                           | Unknown                      |
| Garden State Office Park                         | Hopewell            | Office Development                            | Mixed (Commercial)                | 440 acre site: 1,000,000 sq ft office on 200 acres<br>60 acres of single family units on 6 acre lots<br>170 acres of preserved open space                     | Unknown                                            | Unknown                      |
| Capital Health Systems: Princess Rd Site         | Lawrence            | Medical                                       | Community Service                 | 32 acres                                                                                                                                                      | Planning                                           | Unknown                      |
| Capital Health Systems: RCN Site                 | Lawrence            | Medical                                       | Community Service                 | 134.5 acres                                                                                                                                                   | Planning                                           | Unknown                      |
| Heritage Village                                 | Lawrence            | Mixed Use Development                         | Mixed (Residential)               | 79,103 sq ft on 2.38 acres<br>68 apartments and 5 retail spaces (7,500 sq ft)                                                                                 | Approved                                           | Late 2008<br>(expected date) |
| Quaker Bridge Mall Expansion                     | Lawrence            | Retail Expansion                              | Commercial                        | Final site will be 1.75 million sq ft, a 59% increase<br>New expansion 650,000 sq ft, over 100 new units<br>Multi-deck parking with 72,000 new parking stalls | Planning                                           | 2011<br>(expected date)      |
| Wal-Mart                                         | Lawrence            | Retail                                        | Commercial                        | 143,233 sq ft on 23.5 acres<br>725 parking spaces                                                                                                             | Canceled                                           | Unknown                      |
| Skillman Village                                 | Montgomery          | Mixed Use Development                         | Mixed Use                         | Approx. 40 acres of a 250-acre site<br>Mix of office, retail, housing and civic uses                                                                          | Cleanup<br>Complete,<br>Development in<br>Planning | Unknown                      |
| Montgomery Promenade                             | Montgomery          | Mostly Retail; some<br>Residential and Office | Mixed (Commercial)                | 50 acres<br>325,000 sq ft                                                                                                                                     | Approved                                           | 2011<br>(expected)           |
| Johnson & Johnson site                           | North Brunswick     | Transit Oriented<br>Development               | Office<br>Mixed Use               | 550,000 sq ft retail and commercial on 212 acres<br>53 buildings for retail, office, civic, residential, transit<br>2,000 to 5,000 housing units              | Planning                                           | Unknown                      |
| New Jersey Technology Center - Phase II          | North Brunswick     | Research Facility                             | Office                            | Unknown                                                                                                                                                       | Unknown                                            | Unknown                      |
| Plainsboro Village Center                        | Plainsboro          | Mixed Use Development                         | Mixed Use<br>(Commercial & Civic) | 30 residential units<br>37,500 sq ft of office space<br>New Library                                                                                           | Approved                                           | 2008<br>(expected date)      |
| Princeton Forrestal                              | Plainsboro          | Mixed Use Development                         | Commercial                        | 45 acre site<br>882,000 sq ft of office, retail<br>294 room hotel                                                                                             | Approved                                           | Unknown                      |
| UMCP: Relocation                                 | Plainsboro          | Medical                                       | Community Service                 | 160 acres<br>360,000 sq ft medical facilities<br>270,000 sq ft office and research space<br>440 units age-restricted housing, 32-acre park                    | Under<br>Construction                              | late 2011                    |



**Table 15: Summary of Major Development Projects**

| <u>Name</u>                                         | <u>Municipality</u> | <u>Type</u>                       | <u>Land Use</u>                        | <u>Size</u>                                                                                                                                                                                                                                    | <u>Status</u>      | <u>Year Complete</u> |
|-----------------------------------------------------|---------------------|-----------------------------------|----------------------------------------|------------------------------------------------------------------------------------------------------------------------------------------------------------------------------------------------------------------------------------------------|--------------------|----------------------|
| Novo Nordisk Expansion                              | Plainsboro          | Research Facility                 | Commercial                             | Addition of 400 workers. No data on the physical expansion.                                                                                                                                                                                    | Planning           | Unknown              |
| UMCP: Existing Site                                 | Princeton Borough   | Mixed Use Development             | Mixed Use                              | 12 acres<br>Up to 280 residential units<br>Retail/Office capped at 6%                                                                                                                                                                          | Planning           | Unknown              |
| University Place / Alexander Street                 | Princeton Borough   | Mixed Use Development             | Mixed Use                              | Plan may include University Center for the Creative and Performing Arts,<br>Retail, DINKY & NJ Transit facilities                                                                                                                              | Planning           | Unknown              |
| Hulfish North                                       | Princeton Borough   | Single Family Housing             | Residential                            | 4.4 acres<br>100 housing units<br>Mostly multi-family homes; 20 townhouses and several apts.                                                                                                                                                   | Approved           | Unknown              |
| Merwick Nursing Home and Rehab Site Redevelopment   | Princeton Borough   | Single and Multi-Family Housing   | Residential                            | Up to 125 town homes and apartment units for Princeton University faculty and staff                                                                                                                                                            | Planning           | Unknown              |
| Spring & Tulane Streets                             | Princeton Borough   | Mixed Use Development             | Mixed (Retail & Residential)           | Ground-floor retail, 53 apartments, 10 affordable units                                                                                                                                                                                        | Planning           | Unknown              |
| Bunn Drive Office Building                          | Princeton Township  | Office Development                | Commercial                             | 35,000 sq ft                                                                                                                                                                                                                                   | Approved           | Unknown              |
| Bunn Drive                                          | Princeton Township  | Age Restricted Housing            | Residential                            | 20 acres<br>145 age restricted units, 12 affordable units                                                                                                                                                                                      | Planning           | Unknown              |
| Apex Hotel                                          | South Brunswick     | Hotel                             | Commercial                             | 25,300 sq ft<br>7,200 sq ft restaurant<br>116 units, 262 parking spaces                                                                                                                                                                        | Approved           | Unknown              |
| Warehouse Proposals                                 | South Brunswick     | Warehouses                        | Industrial                             | 7 separate proposals                                                                                                                                                                                                                           | Planning           | Unknown              |
| Gautam Proposal (US 1)                              | South Brunswick     | Commercial and Office Development | Commercial                             | 2 acres<br>19,000 sq ft day care center and office building                                                                                                                                                                                    | Approved           | Unknown              |
| Baker Proposal                                      | South Brunswick     | Age Restricted Housing            | Age Restricted Residential Communities | 26 acres<br>166 age restricted units and a clubhouse                                                                                                                                                                                           | Approved           | Unknown              |
| M & M (US 1)                                        | South Brunswick     | Age Restricted Housing            | Age Restricted Residential Communities | 34 acres<br>133 age restricted units and a clubhouse                                                                                                                                                                                           | Approved           | Unknown              |
| Rajan (NJ 27)                                       | South Brunswick     | Office and Retail Development     | Commercial                             | 1.5 acres<br>13,500 sq ft office and retail space                                                                                                                                                                                              | Approved           | Unknown              |
| W & D LLC (Wynwood Blvd)                            | South Brunswick     | Office Development                | Office Park                            | 1.87 acres<br>12,612 sq ft office building                                                                                                                                                                                                     | Approved           | Unknown              |
| Princeton Junction Train Station Redevelopment Area | West Windsor        | Transit Oriented Development      | Mixed Use                              | 703,000 sq ft office space; 58,200 sq ft retail and commercial<br>11,800 sq ft daycare center; 4,000 sq ft EMS facility<br>250-1000 housing units, incl. 142 affordable units<br>8,930 parking spaces - 7 parking structures plus surface lots | Planning           | Not applicable       |
| Wyeth Tract                                         | West Windsor        | Unknown                           | Unknown                                | 653 acres                                                                                                                                                                                                                                      | Planning           | On hold              |
| Sarnoff Corp.                                       | West Windsor        | Office Development                | Commercial                             | 332 acres; 18 buildings, 1.35 million sq ft office at build out                                                                                                                                                                                | Planning           | Unknown              |
| The Elements at West Windsor                        | West Windsor        | Single Family Housing             | Residential                            | 156 detached single family homes on CR 535                                                                                                                                                                                                     | Under Construction | Unknown              |
| Maneely Tract                                       | West Windsor        | Multiple Use                      | Mixed Use                              | 51 townhouses, 46 apartments<br>40,000 sq ft of office<br>60 units for "project freedom" development                                                                                                                                           | Planning           | Unknown              |

Sources: See page 69

## Central Jersey Transportation Forum Planned Projects Status Report

---

**Publication No.:** 09030

**Date Published:** March, 2009

**Keywords:** Central Jersey Transportation Forum, Transportation Improvement Programs, TIP, DVRPC, NJTPA, road improvements, transit, bridge, land use

**Geographic Area Covered:** Central New Jersey: 21 municipalities in the vicinity of Route 1 in Mercer, Middlesex, Somerset, and Hunterdon counties

**Abstract:**

The *Planned Projects Status Report* has provided information on transportation projects in central New Jersey for over six years. The report covers projects listed in Transportation Improvement Programs (TIPs) for the Delaware Valley Regional Planning Commission (DVRPC) and the North Jersey Transportation Planning Authority (NJTPA). It also covers other regionally important transportation projects regardless of funding. Starting in 2006, major land development projects in the vicinity of Route 1 have been included to help with coordination of transportation and land use planning. The current edition also includes highway and transit projects funded by the American Recovery and Reinvestment Act of 2009.

Full information and maps are provided for 26 projects in the NJDOT Capital Program. An overview map of these Forum-area projects is provided, as well as a map of major development projects. The front section of the report analyzes what the full set of projects means in terms of the Forum's goals.

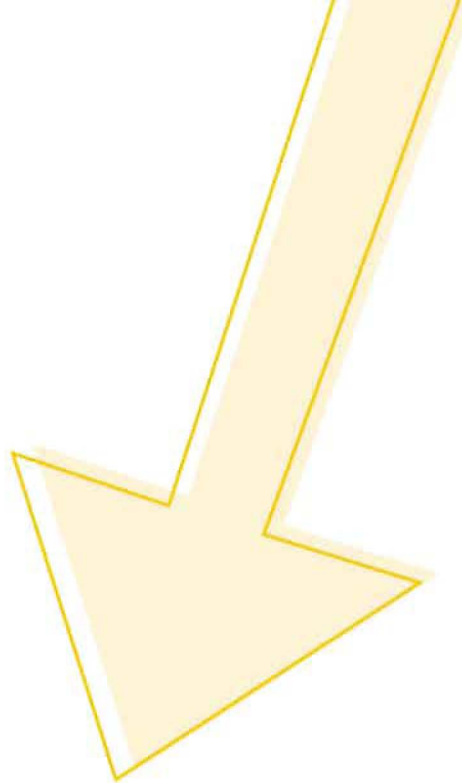
Bridge improvements are the most common project type in the area, accounting for about one-third of central New Jersey's TIP projects. Altogether, the TIP projects represent approval to invest approximately \$550 million dollars over fiscal years 2009-2012.

---

Delaware Valley Regional Planning Commission, 8<sup>th</sup> Floor  
190 North Independence Mall West  
Philadelphia, PA 19106-1520

Telephone: 215-592-1800  
Fax: 215-592-9125  
Internet: [www.dvrpc.org](http://www.dvrpc.org)

Staff contact: Zoe Neaderland, AICP  
Direct phone: 215-592-2839  
E-mail: [zneaderland@dvrpc.org](mailto:zneaderland@dvrpc.org)



DVRPC, 8TH FLOOR

190 NORTH INDEPENDENCE MALL WEST

PHILADELPHIA, PA 19106-1520

TELEPHONE > 215-592-1800

FAX > 215-592-9125

WEB> WWW.DVRPC.ORG