



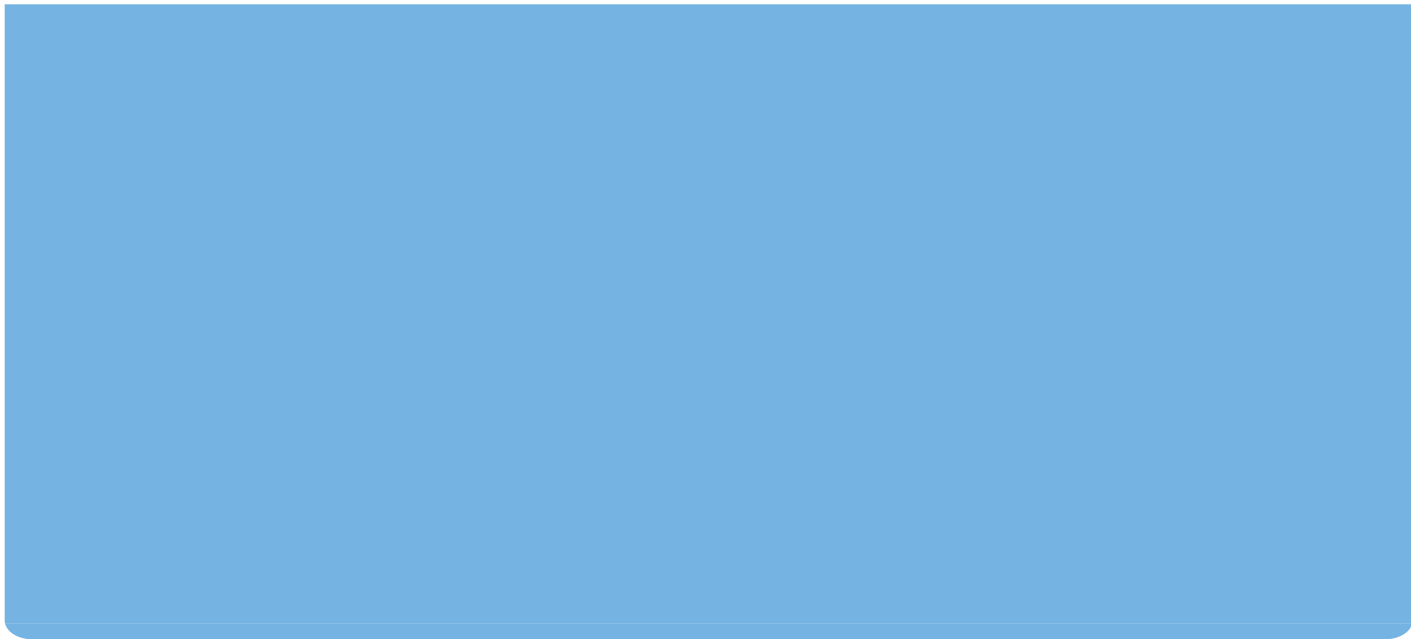
CENTRAL JERSEY TRANSPORTATION FORUM

PLANNED PROJECTS STATUS REPORT

WINTER 2005 Publication No: 05037



**Delaware Valley
Regional Planning
Commission**



CENTRAL JERSEY TRANSPORTATION FORUM

PLANNED PROJECTS STATUS REPORT

WINTER 2005 Publication No: 05037



Delaware Valley
Regional Planning
Commission

CENTRAL JERSEY TRANSPORTATION FORUM

PLANNED PROJECTS STATUS REPORT

Winter, 2005



Delaware Valley Regional Planning Commission

TABLE OF CONTENTS

	<i>Page</i>
I. Introduction	
II. Highway TIP Projects	
Alexander Road Bridge over Amtrak	7
CR 514 Amwell Road Bridge over Neshanic River	8
CR 514 Amwell Road Railroad Bridge	9
CR 518 Bedens Brook Bridge	10
CR 546 Washington Crossing-Pennington Road Bridge	11
CR 546 Washington Crossing-Pennington Road Bridge over Conrail . .	12
CR 602 Bridge over Back Brook	13
CR 602 Bridge over Tributary of Back Brook	14
CR 604/Provinceline Road Intersection Improvements	15
Elm Street Bridge	16
Hutchinson Trail, Washington Township	17
I-195 Rehabilitation, West of Richardson Road to Exit 8	18
I-287 Raritan River Crossing Needs Analysis	19
I-295 Rehabilitation, I-195 to Route 1	20
NJ 27 Six Mile Run Bridge	21
NJ 29 Baldpate Mountain Bicycle/Pedestrian Improvement	22
NJ 29 Guiderail	23
NJ 29 Rockfall Mitigation	24
NJ 29 Washington Crossing State Park, Scenic Byway	25
NJ 31 Ewingville/Upper Ferry Road to CR 518 TDD Project	26
NJ 33 Conrail Bridge Replacement	27
NJ 33 Washington Township Bypass	29
Opie/River Road Bridge	30
Schalks Station Road Bridges Rehabilitation	31
US 1 Bicycle/Pedestrian Improvements	32
US 1 Business, Brunswick Circle to Texas Avenue	33
US 1 Congestion Management & Concept Development Study	34
US 1/Franklin Corner Road Intersection Improvement	35
US 1/CR 571 Penns Neck Area EIS	36
US 1 Widening, South Brunswick	37
US 1 Nassau Park Blvd to I-95, Safety Improvements	38
US 130 Bridge Deck Replacements	39
US 130 Pedestrian Bridge, Washington Township	40
US 206/Arreton Road Drainage	41
US 206 Bypass	42
US 206/Cherry Valley Road Intersection Improvements	43
US 206/Crusers Brook Bridge	44
US 206 CSX Bridge Replacement	45

TABLE OF CONTENTS (Continued)

US 206 Princeton, Bicycle Improvements	46
US 206 Stony Brook Bridges	47
US 206 Wetland Preservation	48
US 206 Widening	49
US 206, North of Cherry Hill Road, Drainage Improvement	50
US 206, North of Quaker Road, Drainage Improvement	51
Van Dyke Road Bridge over Trenton Branch	52
Woodfern Road Bridges	53

New Jersey Turnpike Authority

New Jersey Turnpike Widening, Int. 6 - 8A	57
NJ 92	58

III. Transit TIP Projects

Transit Rail Initiatives	63
Section 5310 Program	65
Section 5311 Program	65

IV. Map and Index of Projects by DBNUM

INTRODUCTION

The Planned Projects Status Report provides information on programmed transportation projects in the Central Jersey area. It covers projects that are listed in approved Transportation Improvement Programs (TIPs) for the Delaware Valley Regional Planning Commission (DVRPC) and North Jersey Transportation Planning Authority (NJTPA). It includes projects under the authority of the New Jersey Department of Transportation (NJDOT), New Jersey Transit, New Jersey Turnpike Authority, and other agencies, as well as municipal transportation projects being completed with federal dollars. This report is updated twice a year. It provides both basic information such as maps of where projects are located and also updates funding and project status.

This report is prepared for general information purposes only. For more definitive information, please contact the project sponsor, NJDOT, or the capital programming staff of DVRPC or NJTPA. The following tables provide an overview of which projects are no longer listed in a current TIP and which have been added. Being added to a TIP is a required step for a project to be funded, but is not a guarantee of funding.

Projects Removed Since the Summer, 2004 Report

Name	DBNUM	Status
NJ 27 Renaissance 2000, Bennetts Lane to Somerset Street	97079	Public information meeting held in December 2004. An initial preferred alternative has been mailed out. This has been identified as a hyper-build project.
NJ Turnpike Widening (Interchanges 8A - 9)	TPK9804	The study was completed and will not be progressed to final design.
NJ 33 Bentley Brook	93247	Assigned to Pipeline 4 (Maintenance). Work expected to start in Spring 2005
US 130 Bridge Deck Replacements (FY '04)	01313	Construction started in Summer, 2004. Completion expected in Fall, 2005

Projects Added for the Winter, 2005 Report
(not including project changes)

Name	DBNUM	Page
CR 602 Bridge over Back Brook	NS9907	13
CR 602 Bridge over Tributary of Back Brook	NS9906	14
NJ Turnpike Widening (Interchanges 6 - 8A)	TPK0501	57
US 1 Business, Brunswick Circle to Texas Avenue	04316	33
US 1, Nassau Park Blvd to I-95, Safety Improvements	01330A	38
US 206, North of Cherry Hill Road, Drainage Improvement	04318	50
US 206, North of Quaker Road, Drainage Improvement	04319	51

Sources: DVRPC and NJTPA TIP database, NJDOT, NJTA, December 2004 - January 2005

There were fifty-one projects or studies formally programmed in the main body of an adopted TIP in the Central Jersey region based on data readily available in December, 2004. The two tables that follow are a first step in using the Planned Projects Status Report to think about overall regional transportation investments and opportunities in the Central Jersey transportation system.

Developing an overview of the types of investments being proposed in the region can be helpful in thinking beyond individual projects. In the following table the fifty-one projects are sorted by their primary type of improvement. There are many ways to categorize projects. For example, bridges can be considered road projects, but here they are a separate category because they are evaluated based on very specific functional and structural criteria. The greatest number of projects are focused road or bridge improvements, together accounting for 63% of the listings.

Types of Projects

General Type	Number of Projects
Bicyclist and Pedestrian Facilities	5
Bridges	19
Intersection/Safety	4
Other - drainage, rockfall mitigation, scenic byway, wetland preservation, etc.	7
Road	13
Transit	3
Total	51

In November of 2004, the Forum adopted an updated action plan that has as one of two highest priorities improving east-west access in the region. The table that follows shows an initial effort to highlight some projects that address regional east-west access. This is a first assessment that will be refined for subsequent updates of this report. Bridge projects were not included because their primary focus is safety. Bridges can become bottlenecks for east-west transportation and this may be considered in future refinements of this assessment.

Initial Assessment

Summary of Projects Addressing Regional East-West Access

Project	General Type
CR 604 Rosedale Road and Provinceline Road Intersection Improvements	Intersection/Safety
I-287 Raritan River Crossing Needs Analysis	Road
NJ 92	Road
Section 5310 Program	Transit
Section 5311 Program	Transit
US 1 Franklin Corner Road Intersection Improvement	Intersection/Safety
US 1/CR 571 Penns Neck Area EIS	Road
US 206 Cherry Valley Road Intersection Improvements	Intersection/Safety

NJDOT PROJECT DEVELOPMENT PROCESS

The first step in the project development process is **Problem Statement**. Problem Statement is a general description of the problem, submitted to NJDOT. This written description can be prepared and submitted by a number of sources, such as: MPOs, state agencies, county governments, TMAs, municipal officials, public, business/civic groups, or from studies like the Central Jersey Transportation Forum.

During the next step the details of the problem statement are identified through the **Concept Development** process. The purpose of Concept Development is to deliver projects to Scoping with a well-defined need and a recommended concept that has been environmentally screened and has community support. Concept Development includes traffic studies, needs analysis, and corridor studies. At the successful conclusion of Concept Development the project becomes a candidate for Scoping.

Feasibility Assessment is the first phase of Scope Development. Sufficient engineering is performed to determine if the concept can feasibly evolve into a project based on environmental, community, engineering and budget constraints. Scope Development will result in an Initially Preferred Alternative. If it can not be reasonably demonstrated that environmental approvals and community support are forthcoming, the project will neither become a project nor pass in **Final Scope Development**. Final Scope Development is the second phase of Scoping; it produces a recommended alternative which defines the project scope for final design. During this phase **Preliminary Engineering/Design** advances far enough to complete the environmental documents, and obtain community input and endorsement for any design exceptions.

The project will then be placed in the draft project pool as a candidate for the Capital Program, if deemed worthy. If a project is deemed “fatally flawed”, it will be recommended for termination or recycled for reconsideration as part of Concept Development. There may be some instances where additional scoping may be warranted to develop a more feasible alternative to address the project need. For most projects, completing the above steps is NJDOT’s responsibility. For a limited number of federal-aid projects, typically for county roads or local bridges, the county or the MPOs have the option to assume project management responsibilities.

Once a project has successfully completed Final Scope Development and made it to the Capital Program it will have funding budgeted to complete the necessary phases for implementation - **Engineering, Right-of-Way Acquisition** and **Construction**.

Project development and construction are funded through a number of funding sources. Some of the more significant sources are - **Federal-aid Bridge** funds for bridges on the federal-aid system or for bridges off the federal-aid system **State Bridge Discretionary** funding are used; **National Highway System** funds are used for improvements to the Interstate Highway System and other key highway links (e.g., US 1 and US 130). **Surface Transportation Program** supports the remaining roads on the federal-aid system.

Highway TIP Projects

CJTF - Project Status Report - Winter 2005

Alexander Road Bridge over Amtrak

Routes: **Section:** Alexander Road Bridge over Amtrak **DBNUM:** 99414



County: Mercer **Municipalities:** West Windsor Twp. **Sponsor:** NJDOT

This project will address the replacement of the Alexander Road bridge over Amtrak Northeast Corridor Line. The bridge is structurally deficient and has deteriorated to the point that it requires replacement. The new structure will be located to the south of the present structure and allow stage construction to minimize the duration and length of traffic detours. In addition to the bridge replacement will be roadway work to connect the structure to existing roadways as well as improvement to the North Post Road intersection immediately adjacent to the bridge. The project will be bicycle/pedestrian compatible.

Programmed in DVRPC's TIP for Final Design/Engineering and Right-of-Way Acquisition in Fiscal Year 2005 using State Bridge Discretionary funding. It is listed for Construction in 2006 with authorization to seek State Bridge Discretionary funding.

CJTF - Project Status Report - Winter 2005

CR 514 Amwell Road Bridge over Neshanic River

Routes: CR 514

Section: Amwell Road Bridge
over Neshanic River

DBNUM: L002



County: Somerset **Municipalities:** Hillsborough Twp. **Sponsor:** NJDOT

This project will replace the existing Amwell Road bridge over the Neshanic River. The bridge is 24 feet between abutments with one lane in each direction. The bridge and roadway approaches will be widened to provide two 12 foot lanes and 8 foot shoulders in each direction. The roadway approaches will also be aligned to provide adequate sight distance. The anticipated roadway improvements include improvements at the intersection. As part of the project the Amwell Road/Montgomery Road/Black Point Road intersection will be improved. The intersection improvements will consist of milling, resurfacing, new concrete curb construction and drainage.

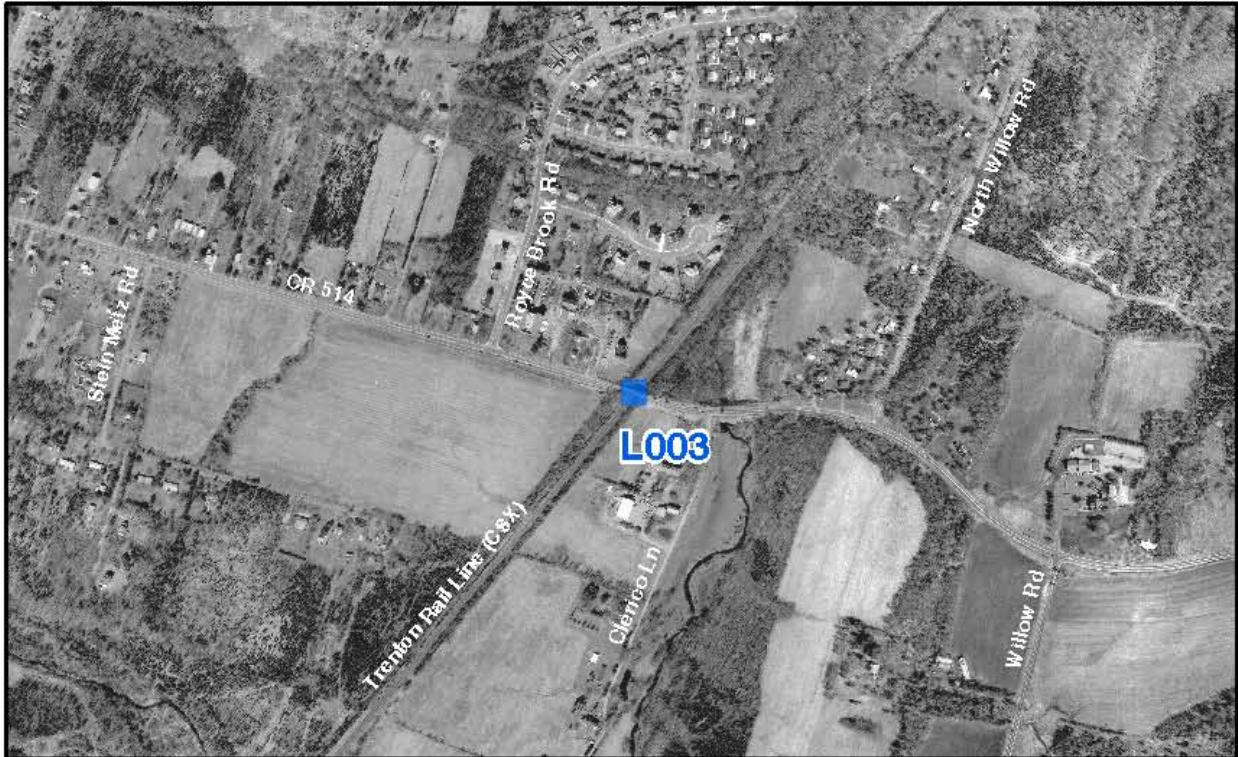
Programmed in NJTPA's TIP for Final Design/Engineering in Fiscal Year 2005 with authority to apply for Surface Transportation Program - Urban Allocation (NJTPA) funding. It is programmed for Construction in 2006.

CJTF - Project Status Report - Winter 2005

CR 514 Amwell Road Railroad Bridge

Routes: CR 514

Section: Amwell Road Railroad Bridge **DBNUM:** L003



County: Somerset **Municipalities:** Hillsborough Twp.

Sponsor: NJDOT

This project involves replacement of the existing Amwell Road bridge over Conrail Trenton Rail Line (now CSX Rail). The existing single span bridge is classified as structurally deficient and functionally obsolete. The replacement structure will be located to the south of the existing alignment to meet the future alignment of Amwell Road following construction of the proposed Route 206 Bypass. The bridge will be constructed on an improved vertical alignment, increasing the existing substandard sight distance over the rail line and will provide a 12-foot travel lane and 12-foot shoulder in each direction. This project will be bicycle/pedestrian compatible.

Programmed in NJTPA's TIP for Construction in Fiscal Year 2005 with authority to seek Surface Transportation Program - Urban Allocation (NJTPA) funding.

CJTF - Project Status Report - Winter 2005

CR 518 Bedens Brook Bridge

Route: CR 518 **Section:** Bedens Brook Bridge

DBNUM: L082



County: Somerset **Municipalities:** Montgomery Twp.

Sponsor: Somerset

This project will provide for the replacement of the existing structure on an improved alignment. The new structure will carry a roadway width of 36 feet with shoulders on both sides.

Programmed in NJTPA's TIP for Construction in Fiscal Year 2005 with authorization to seek State Transportation funding.

CJTF - Project Status Report - Winter 2005

CR 546 Washington Crossing-Pennington Rd Bridge

Routes: CR 546

Section: Washington Crossing-
Pennington Rd over
Woolsey's Brook

DBNUM: D9907



County: Mercer

Municipalities: Hopewell Twp.

Sponsor: NJDOT

This project provides for the replacement of the Washington Crossing-Pennington Road (CR 546) bridge structure over Woolsey's Brook. Improvement of the alignment of the Jacob Creek Road (CR 637) intersection is included.

Programmed in DVRPC's TIP for Preliminary Design by the municipality in Fiscal Year 2005.

During Fiscal Year 2004 there was an administrative TIP action to draw funds from the DVRPC Future Projects TIP item (DB D026) for this project and the CR 546 bridge over Conrail (DB D9906) to provide funds for scoping.

CJTF - Project Status Report - Winter 2005

CR 546 Washington Crossing-Pennington Road Bridge over Conrail

Route: CR 546 **Section:** Washington Crossing-Pennington
Road Bridge over Conrail

DBNUM: D9906



County: Mercer

Municipalities: Hopewell Twp.

Sponsor: Mercer County

This project will replace the Washington Crossing-Pennington Road bridge over Conrail. The overall condition of this structure is listed as critical. The existing structure will be replaced and the project includes improvement to the vertical geometry.

Programmed in DVRPC's TIP for Local Preliminary Design in Fiscal Year 2005.

During Fiscal Year 2004 there was an administrative TIP action to draw funds from the DVRPC Future Projects TIP item (DB D026) for this project and the other CR 546 bridge (DB D9907) to provide funds for scoping.

CJTF - Project Status Report - Winter 2005

CR 602 (Wertsville Road) Bridge over Back Brook

Routes: Wertsville Rd

Section: Dutch Lane -
Losey Road

DBNUM: NS9907



County: Hunterdon **Municipalities:** East Amwell **Sponsor:** Hunterdon

This project will investigate rehabilitation and replacement alternatives for this deteriorated structure.

Programmed in NJTPA's TIP for Local Preliminary Design in Fiscal Year 2005.

CJTF - Project Status Report - Winter 2005

CR 602 (Wertsville Road) Bridge over Tributary of Back Brook

Routes: Wertsville Rd

Section: Dutch Lane -
Losey Road

DBNUM: NS9906



County: Hunterdon **Municipalities:** East Amwell **Sponsor:** Hunterdon

This project will investigate rehabilitation and replacement alternatives for this deteriorated structure.

Programmed in NJTPA's TIP for Local Preliminary Design in Fiscal Year 2005.

CJTF - Project Status Report - Winter 2005

CR 604/Provinceline Road Intersection Improvements

Route: CR 604

Section: Rosedale Road (CR 604)
and Provinceline Road

DBNUM: HP01003



County: Mercer

Municipalities: Princeton Twp.

Sponsor: Princeton Twp.

This project will provide for proposed intersection improvements at CR 604 (Rosedale Road) and Provinceline Road. The Federal Fiscal Year 2001 DOT Appropriations Act provided funding for this project under Section 378. The funding was reduced by 0.22% under Section 1403 of the Fiscal Year 2001 Omnibus Consolidated Appropriations Act. This project has been allocated \$249,450.

Programmed in DVRPC's TIP for Engineering, Right-of-Way Acquisition and Construction in Fiscal Year 2005.

CJTF - Project Status Report - Winter 2005

Elm Street Bridge

Route:

Section: South Branch of
Raritan River

DBNUM: NS0207



County: Somerset **Municipalities:** Hillsborough Twp.
Branchburg Twp.

Sponsor: Somerset
County

This project will provide for the rehabilitation of this deteriorated structure.

Programmed in NJTPA's TIP for Construction in Fiscal Year 2006. This project is authorized to seek Surface Transportation Program - Urban Allocation (NJTPA) funds.

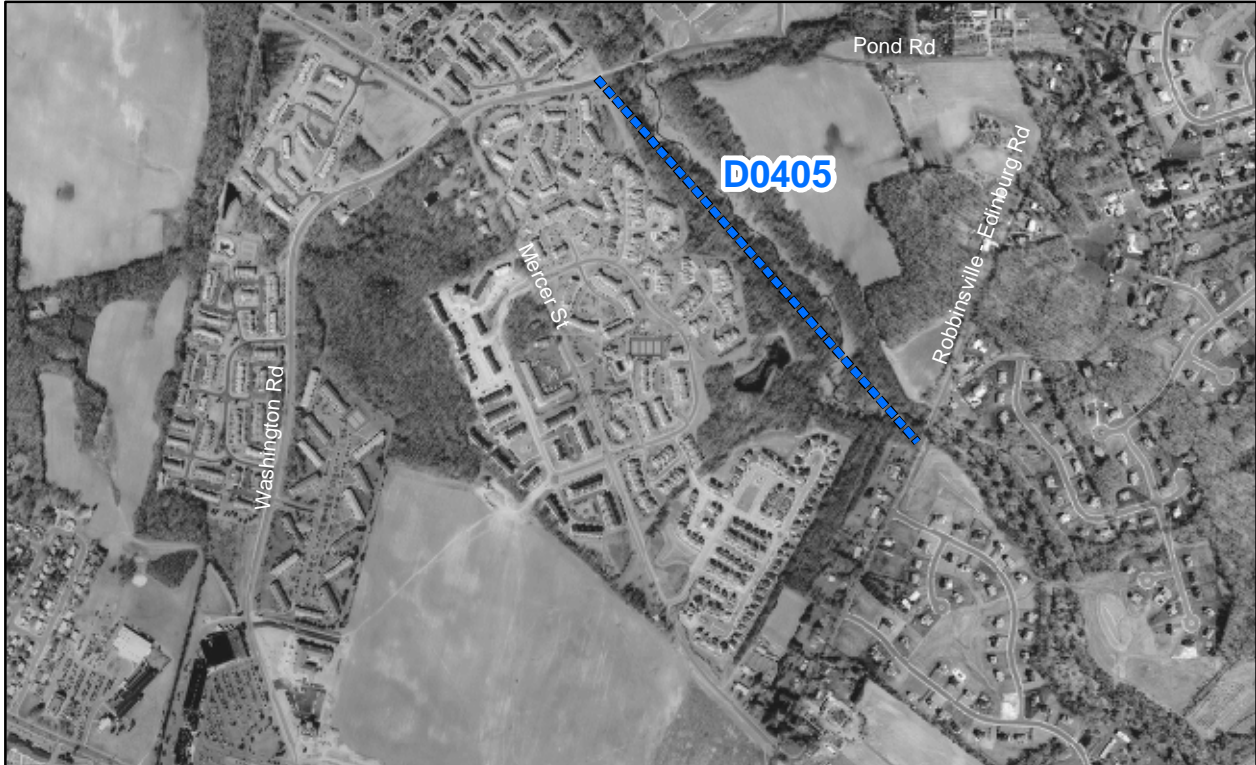
CJTF - Project Status Report - Winter 2005

Hutchinson Trail, Washington Twp.

Routes:

Section: Housing Development to
Schools

DBNUM: D0405



County: Mercer

Municipalities: Washington Twp.

Sponsor: NJDOT

This project will provide for the construction of a bikeway and pedestrian path that will link two housing developments to the local middle school and the future site of the high school. The trail is also a segment of the larger township bikeway plan which will eventually connect to the town center, other adjacent developments and a larger trail network. This project was selected as part of the DVRPC Competitive Congestion Management Air Quality Program.

Programmed in DVRPC's TIP for Construction in Fiscal Year 2005 with Congestion Mitigation and Air Quality Improvement Program funding.

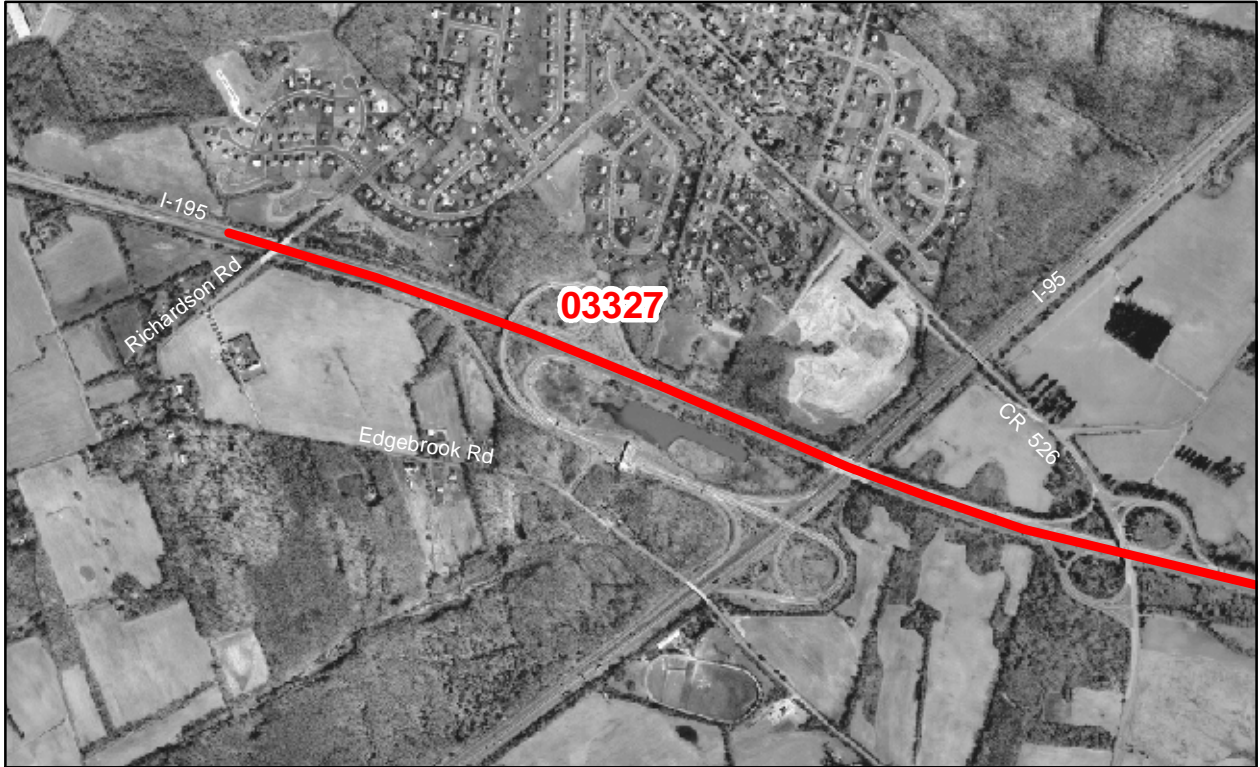
CJTF - Project Status Report - Winter 2005

I-195 Rehabilitation, West of Richardson Road to Exit 8

Route: I-195

Section: West of Richardson Road to Exit 8
From Milepost 5.30 to 9.25

DBNUM: 03327



County: Mercer

Municipalities: Hamilton Twp.
Washington Twp. Upper Freehold Twp.

Sponsor: NJDOT

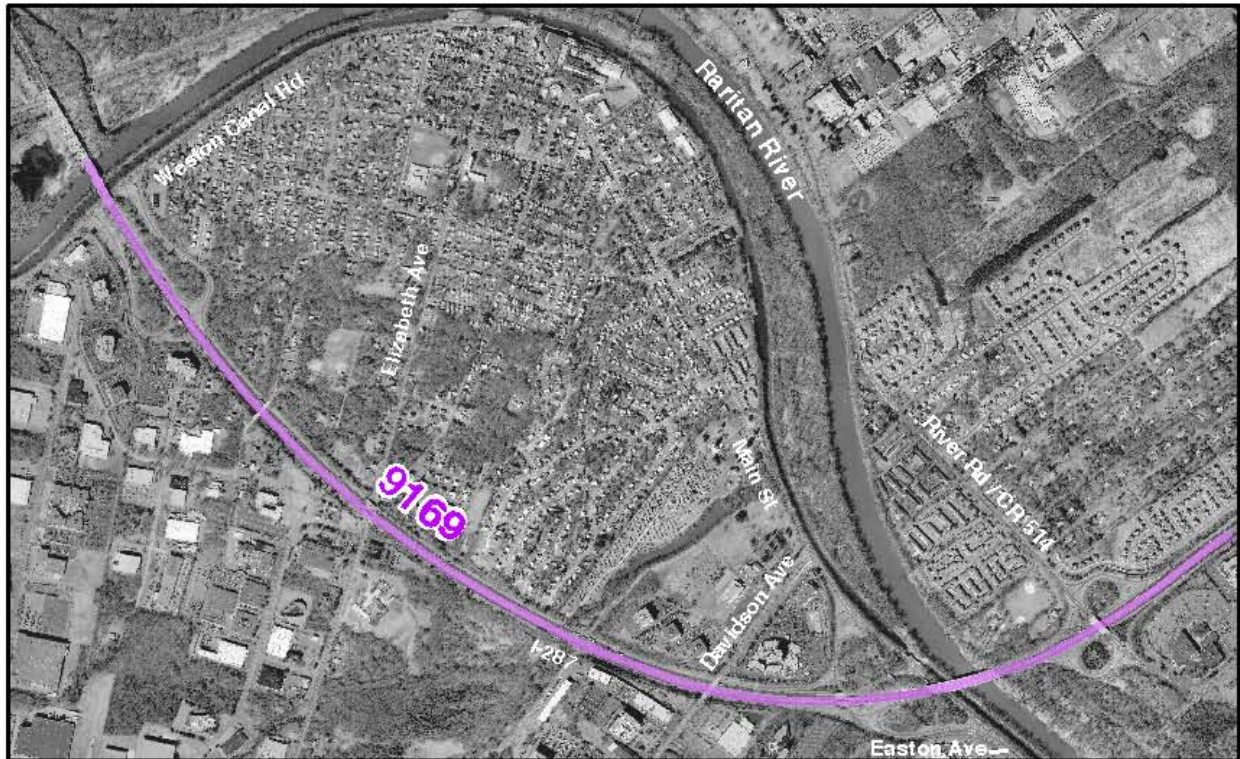
This project will rehabilitate I-195 westbound from west of Richardson Road to east of Exit 8.

Programmed in DVRPC's TIP for Construction in Fiscal Year 2005. It is authorized to seek Interstate Maintenance funds.

CJTF - Project Status Report - Winter 2005

I-287 Raritan River Crossing Needs Analysis

Routes: I-287 **Section:** I-287 Raritan River Crossing Needs Analysis **DBNUM:** 9169



County: Middlesex **Municipalities:** Piscataway Twp. **Sponsor:** NJDOT
Somerset Franklin Twp.

A study will be conducted of traffic congestion problems on I-287 in the vicinity of the Raritan River crossing between Piscataway Township (Middlesex County) and Franklin Township (Somerset County). The study area includes interchanges 9, 10, and 12 on the interstate and related traffic congestion problems on both sides of the river.

Programmed in NJTPA's TIP for Feasibility Assessment in Fiscal Years 2005 and 2006.

CJTF - Project Status Report - Winter 2005

I-295 Rehabilitation, I-195 to US 1

Route: I-295 **Section:** North of I-195 to US 1
From Milepost 60.70 to 67.80

DBNUM: 03325



County: Mercer

Municipalities: Hamilton Twp.
Lawrence Twp.

Sponsor: NJDOT

The project will rehabilitate I-295 from north of I-195 to US 1.

This is a multi-year funded project under the provisions of Section 13 of P.L. 1995, c. 108. Total construction funding is anticipated to be \$13,000,000.

Programmed in DVRPC's TIP for Construction in Fiscal Years 2005 and 2006. This project is authorized to seek Interstate Maintenance funding.

CJTF - Project Status Report - Winter 2005

NJ 27 Six Mile Run Bridge

Routes: NJ 27 **Section:** Route 27 Bridge over
Six Mile Run

DBNUM: 146



County: Middlesex,
Somerset

Municipalities: Franklin Twp.
North Brunswick Twp.

Sponsor: NJDOT

This project will replace the Route 27 bridge over Six Mile Run on the same alignment. The existing structure has two 11-foot travel lanes and shoulders of varying width. The new structure will have two 12-foot travel lanes and 10-foot shoulders along with a sidewalk on the western side of the structure.

Programmed in NJTPA's TIP for Final Design/Engineering in Fiscal Year 2005. In Fiscal Year 2006, it is programmed for Right-of-Way Acquisition. In Fiscal Year 2007, it is programmed for Construction. It is authorized to seek Federal Bridge Program funding for each phase.

CJTF - Project Status Report - Winter 2005

NJ 29, Baldpate Mountain Bicycle/Pedestrian Improvement

Routes: NJ 29 **Section:** Route 29 Baldpate Mountain

DBNUM: 00362F



County: Mercer

Municipalities: Hopewell Twp.

Sponsor: NJDOT

This project will provide access to the Delaware and Raritan (D&R) Canal towpath trail for bicyclists and pedestrians crossing the Canal. The proposal for this project includes construction of a bicycle/pedestrian bridge across the D&R Canal, improving the existing parking area, construction of a new boat or canoe dock, and a new kiosk sign.

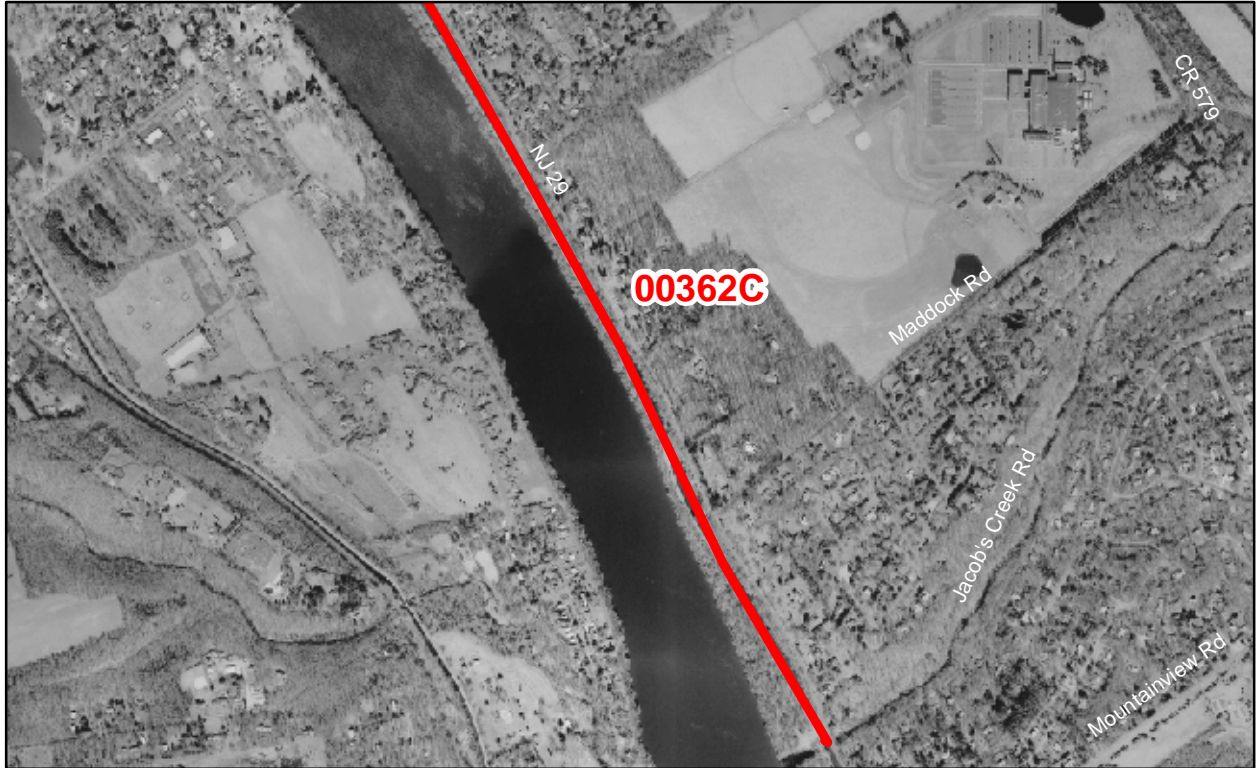
Programmed in DVRPC's TIP for Feasibility Assessment in Fiscal Year 2005 and for Preliminary Design in Fiscal Year 2006.

CJTF - Project Status Report - Winter 2005

NJ 29, Guiderail

Routes: NJ 29 **Section:** Trenton to Frenchtown

DBNUM: 00362C



County: Mercer

Municipalities: Various

Sponsor: NJDOT

The purpose of this study is to compare alternative guiderail treatments to replace existing guiderail and identify locations where new guiderail is warranted or can be removed along Route 29 to promote further enhancement of the corridor from Trenton to Frenchtown. Guiderail is proposed for replacement in order to enhance the aesthetic character of the site. Although efforts should be made to minimize right of way, utility and environmental impacts, these types of impacts may be justifiable if guiderail can be eliminated. This project is located in both DVRPC and NJTPA regions.

Programmed in DVRPC's TIP for Preliminary Design in Fiscal Year 2005.

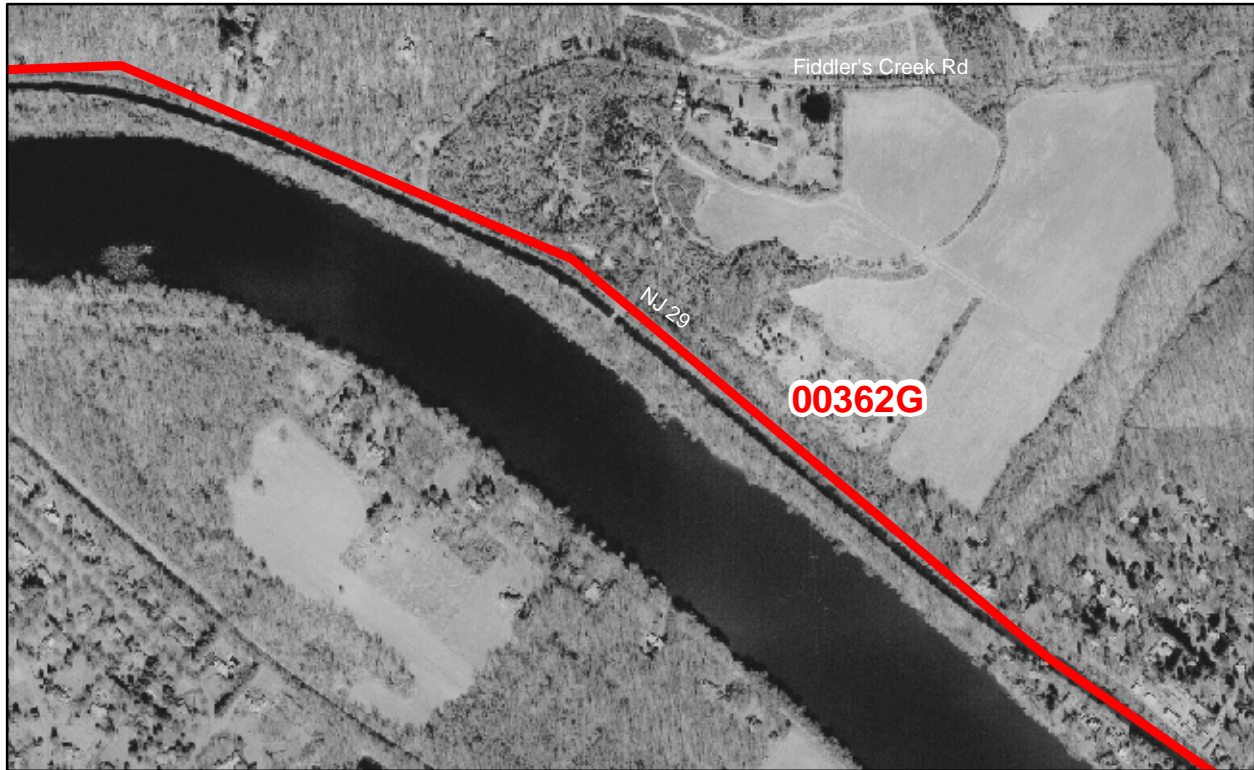
CJTF - Project Status Report - Winter 2005

NJ 29, Rockfall Mitigation

Routes: NJ 29

Section: Route 29 from
milepost 3.20 - 34.76

DBNUM: 00362G



County: Mercer

Municipalities: Various

Sponsor: NJDOT

A study will be conducted leading to recommended mitigation measures for falling rocks along the Route 29 Scenic Byway. This project is located in both the NJTPA and DVRPC regions.

Programmed in DVRPC's TIP for Feasibility Assessment in Fiscal Year 2005 and for Preliminary Design in Fiscal Year 2006.

CJTF - Project Status Report - Winter 2005

NJ 29, Washington Crossing State Park, Scenic Byway

Routes: NJ 29 **Section:** Vicinity of Washington Crossing
State Park

DBNUM: 00362L



County: Mercer

Municipalities: Hopewell Twp.

Sponsor: NJDOT

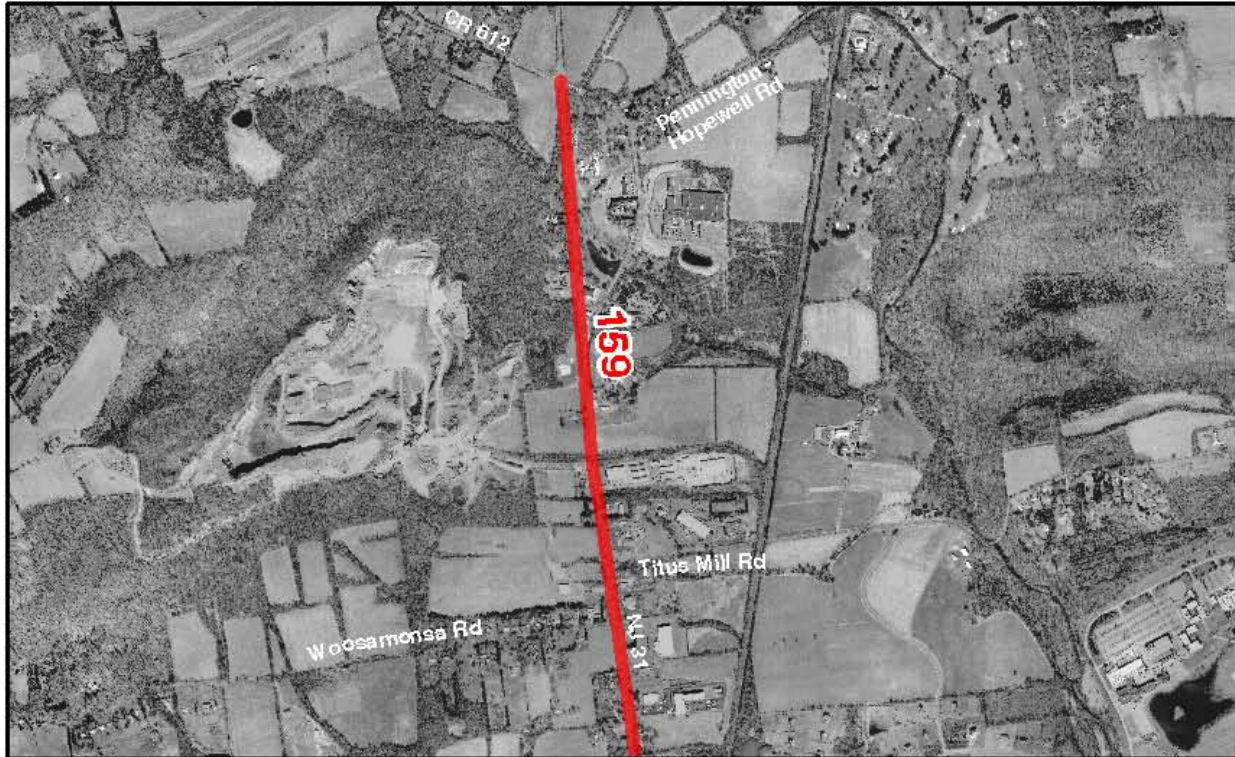
This project will provide scenic byway enhancements along Route 29 in the vicinity of Washington Crossing State Park with coordination of the Department of Environmental Protection.

Programmed in DVRPC's TIP for Feasibility Assessment in Fiscal Year 2005 and for Preliminary Design in Fiscal Year 2006.

CJTF - Project Status Report - Winter 2005

NJ 31, Ewingville/Upper Ferry Rd to CR 518 TDD Project

Routes: NJ 31 **Section:** Ewingville/Upper Ferry Rd **DBNUM:** 159
to CR 518 (Lambertville-Hopewell Rd)



County: Mercer **Municipalities:** Hopewell Twp. **Sponsor:** NJDOT
Pennington Borough, Ewing Twp.

This project is to determine the need for future improvements to the section of Route 31 from Ewingville/Upper Ferry Road to CR 518. The concept design study will include Context Sensitive Design. It is intended that concepts developed will have the concurrence of the local officials as well as the public. Bicycle/pedestrian issues within this area will also be included.

Programmed in DVRPC's TIP for Concept Development in Fiscal Year 2005 and Feasibility Assessment in Fiscal Year 2006.

CJTF - Project Status Report - Winter 2005

NJ 33 Conrail Bridge Replacement

Routes: NJ 33 **Section:** Route 33 Bridge over Conrail

DBNUM: 9101



County: Mercer

Municipalities: Washington Twp.

Sponsor: NJDOT

This project will provide for the replacement of the existing structure on a new alignment.

The proposed alternative would provide a 23-foot underclearance for the new structure. The proposed Route 33 highway section would consist of two 12-foot through lanes westbound, one 12-foot through lane eastbound, and 10-foot outside shoulders. Route 33 at the intersection of Route 130 will consist of one through lane eastbound, a shared through/right lane, and left turn lane, one through lane westbound and two left-turn lanes.

The Route 130 highway section would remain as is with improvements to the northbound alignment. The proposed intersection of Route 33 and Route 130 would have a single traffic signal and Sharon Road will be redesigned as a right in and right out only intersection with no signal required. The proposed intersection is designed as a typical at-grade intersection with a finger ramp providing the Route 130 southbound to Route 33 westbound movement. A reverse loop ramp from Route 130 southbound to Route 33 eastbound would provide for the left-turn movement from Route 130 southbound to the realigned CR 526. Route 130 northbound turning movements to Route 33 and CR 526 are provided in the Township's roadway design plan.

Pedestrians will be accommodated either by adding a sidewalk to the south side of the structure or by leaving the old structure in place as a pedestrian only bridge.

Programmed in DVRPC's TIP for Final Design/Engineering in Fiscal Year 2005 and for Right-of-Way Acquisition in Fiscal Year 2006. It is programmed for Construction in Fiscal Year 2007. All phases are approved to seek Federal Bridge Program funding.

CJTF - Project Status Report - Winter 2005

NJ 33 Washington Township Bypass

Routes: NJ 33 **Section:** Route 33 Washington Township Bypass

DBNUM: 99368A



County: Mercer

Municipalities: Washington Twp.
Hamilton Twp.

Sponsor: NJDOT

This project will provide for the realignment of Route 33 from Washington Boulevard to Route 130 in the vicinity of South Gold Drive in conjunction with the Washington Township Proposed Town Center project. Existing Route 33 will revert to a “main street” upon completion of the bypass.

Programmed in DVRPC’s TIP for Preliminary Design in Fiscal Year 2005.

CJTF - Project Status Report - Winter 2005

Opie/River Road Bridge

Route: **Section:** South Branch of Raritan River **DBNUM:** NS9902



County: Somerset **Municipalities:** Hillsborough Twp. **Sponsor:** Somerset
Branchburg Twp.

This project is comprised of the replacement of the existing structure with a new bridge. The existing structure is structurally deficient due to the poor condition of its substructure and low structural evaluation. It is also functionally obsolete as a result of poor deck geometry and has a 10-ton weight posting. The new structure will be wider than the existing bridge and will have improved roadway approaches.

Programmed in NJTPA's TIP for Construction in Fiscal Year 2005. This project is authorized to seek Surface Transportation Program - Urban Allocation (NJTPA) funds.

CJTF - Project Status Report - Winter 2005

Schalks Station Road Bridges Rehabilitation

Routes:	Section: Schalks Station Road over Amtrak and Devil Brook	DBNUM: 00321
----------------	---	---------------------



County: Middlesex	Municipalities: Plainsboro Twp.	Sponsor: NJDOT
--------------------------	--	-----------------------

This project will provide for the replacement of the bridge deck that will maintain the existing steel superstructure and provide bicycle/pedestrian accessibility. A shared bicycle/pedestrian sidewalk lane will be provided through cantilever addition to the through girders along the east side of Schalks Crossing Road. Repairs will be made to the substructure. The approach roadway substandard vertical curves will be improved with new highway lighting. In addition, the driveway access located southeast of the bridge will also be improved.

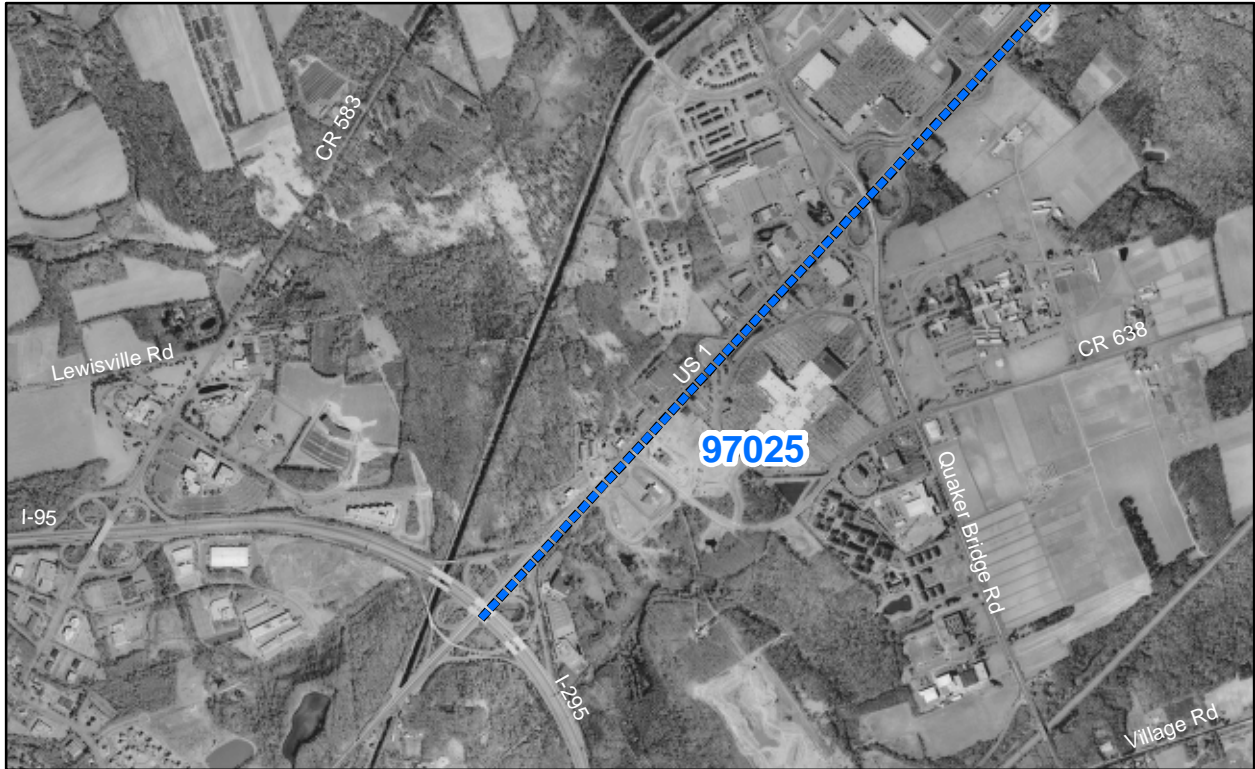
Programmed in NJTPA's TIP for Preliminary Design in Fiscal Year 2005.

CJTF - Project Status Report - Winter 2005

US 1 Bicycle/Pedestrian Improvements

Routes: US 1 **Section:** Lawrence and West Windsor Townships

DBNUM: 97025



County: Mercer **Municipalities:** Lawrence Twp. **Sponsor:** NJDOT
West Windsor Twp.

This project will provide for proposed bicycle/pedestrian improvements along this corridor in Mercer County as identified by the NJDOT Route One Bicycle/Pedestrian Corridor Plan.

Programmed in DVRPC's TIP for Concept Development in Fiscal Years 2005 and 2006.

CJTF - Project Status Report - Winter 2005

US 1 Business, Brunswick Circle to Texas Avenue

Routes: US 1 Business

Section: Brunswick Circle -
Texas Avenue

DBNUM: 04316



County: Mercer

Municipalities: Lawrence Twp.

Sponsor: Local

The New Jersey DOT is providing support for local planning assistance for context sensitive design and economic development. The next step is for Township consensus on a "vision plan."

Programmed in DVRPC's TIP for Concept Development in Fiscal Year 2005 and Feasibility Assessment in Fiscal Year 2006.

CJTF - Project Status Report - Winter 2005

US 1 Congestion Management and Concept Development Study

Routes: US 1 **Section:** Route 1 from I-95/I-295
to Alexander Road

DBNUM: 01330



County: Mercer **Municipalities:** Lawrence Twp.
West Windsor Twp.

Sponsor: NJDOT

Concept Development will encompass the area between the I-95/295 Interchange and Alexander Road. The study will evaluate the entire range of congestion management strategies, from trip reduction to highway operations to general-purpose capacity increases. This may include selected widening, collector-distributor lanes, interchange improvements, intersection improvements/signal removals, and possible grade separations. CMS for the Route 1 Corridor through Mercer County will also be addressed.

Programmed in DVRPC's current TIP for Concept Development in Fiscal Years 2005 and 2006.

CJTF - Project Status Report - Winter 2005

US 1/Franklin Corner Road

Routes: US 1 **Section:** Intersection of Route 1 and Franklin Corner Road

DBNUM: 027



County: Mercer

Municipalities: Lawrence Twp.

Sponsor: NJDOT

This project will provide for proposed intersection improvements at Franklin Corner Road which may include widening of Franklin Corner Road, widening of Route 1, revisions to the forward ramps, and signalization of those ramps at Franklin Corner Road.

Programmed in DVRPC's TIP for Concept Development in Fiscal Year 2005 and for Feasibility Assessment in Fiscal Year 2006.

CJTF - Project Status Report - Winter 2005

US 1/CR 571 Penns Neck Area EIS

Routes: US 1
CR 571

Section: Route 1 in the vicinity of Washington
Road to Harrison Street

DBNUM: 031



County: Mercer

Municipalities: West Windsor Twp.

Sponsor: NJDOT

An Environmental Impact Statement process was done to develop a solution or package of solutions to address recurring congestion in the Penns Neck area of Route 1 in the vicinity of Washington Road (County Route 571) and Harrison Street in West Windsor Township. The process is intended to gain community input on the nature of the problem to be addressed and the range of alternatives to be investigated, and will seek consensus on a final solution or package of solutions to be implemented. The process will provide a model for future EIS processes within the framework of Department's Context Sensitive Design initiative. The Final EIS was distributed in December, 2004.

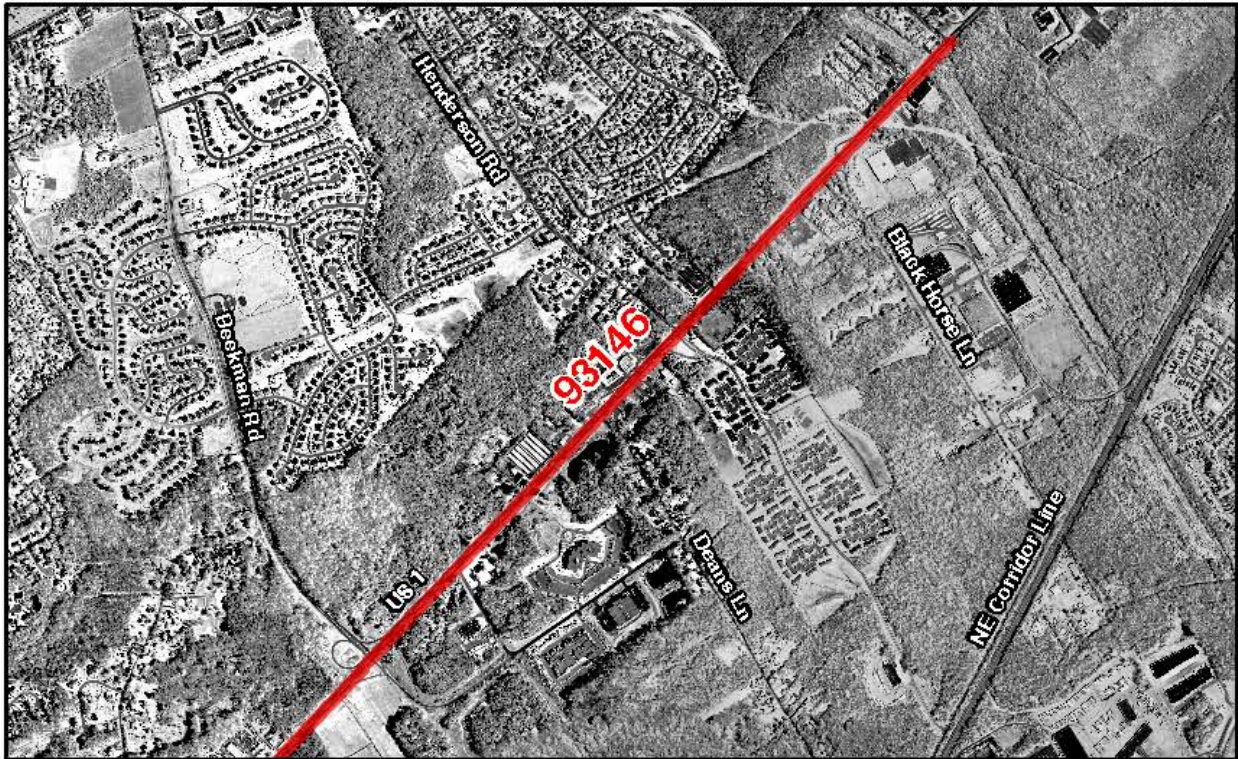
Programmed in DVRPC's TIP for Preliminary Design in Fiscal Year 2005.

CJTF - Project Status Report - Winter 2005

US 1 Widening

Routes: US 1 **Section:** Route 1 from Finnegans Lane
to Sayre Drive

DBNUM: 93146



County: Middlesex **Municipalities:** South Brunswick Twp.
Plainsboro Twp.
North Brunswick Twp.

Sponsor: NJDOT

This project is a planning study of the future capacity needs on Route 1 in South Brunswick.

Programmed in NJTPA's TIP for Feasibility Assessment in Fiscal Year 2005 and for Preliminary Design in Fiscal Year 2006.

CJTF - Project Status Report - Winter 2005

US 1, Southbound, Nassau Park Blvd to I-95, Safety Improvements

Routes: US 1 **Section:** Nassau Park Blvd
to I-95

DBNUM: 01330A



County: Mercer

Municipalities: Lawrence Twp.
West Windsor Twp.

Sponsor: NJDOT

This is a safety and operational project with primary focus to assess solution to queuing/safety problems at the exit ramp of Quaker Bridge Mall. The critical concerns along this stretch include the efficiency in the separation of “through” and local traffic; safety of weaving and merging operation along collector/distributor roadway; density of roadside driveway access and the associated vehicular conflicts and lack of acceptable deceleration/acceleration lanes on Route 1 southbound at Quaker Bridge Mall loop ramp. The potential roadway improvement may include elimination of driveways, shoulder widening, and maintaining a broader vision to assure the compatibility of any follow-up long-term improvements of the remaining segments.

Programmed in DVRPC’s TIP for Concept Development in Fiscal Year 2005 and Feasibility Assessment in Fiscal Year 2006..

CJTF - Project Status Report - Winter 2005 US 130 Bridge Deck Replacements (Phase B)

Routes: NJ 130

Section: Various

DBNUM: 01313A



County: Mercer
Burlington

Municipalities: East Windsor Twp.
Burlington Twp.

Sponsor: NJDOT

This project will provide for the rehabilitation or replacement of the following bridge decks: Route 130 over Rocky Creek and Route 130 southbound over Assiscunk Creek. This project had previously been listed for four bridges. It was broken into two projects and this is the second two bridges.

Programmed in DVRPC's TIP for Construction in Fiscal Year 2005 using Federal Bridge Program funding.

CJTF - Project Status Report - Winter 2005

US 130 Pedestrian Bridge

Routes: US 130

Section: Route 130 Pedestrian Bridge **DBNUM:** 98535
Washington Township



County: Mercer

Municipalities: Washington Twp.

Sponsor: Washington Twp.

This project will provide for the construction of a pedestrian bridge across Route 130. It is associated with the NJ 33 Conrail bridge replacement project (DB 9101)

Programmed in DVRPC's TIP for Construction in Fiscal Year 2006. The federal Transportation Equity Act for the 21st Century (TEA-21) provided funding for this project under Section 1601, High Priority Projects Program. The Act allocated \$2.25 million for this project. Fiscal Year 2000 and Fiscal Year 2001 RABAs have increased the total authorization amount to \$2,309,253.

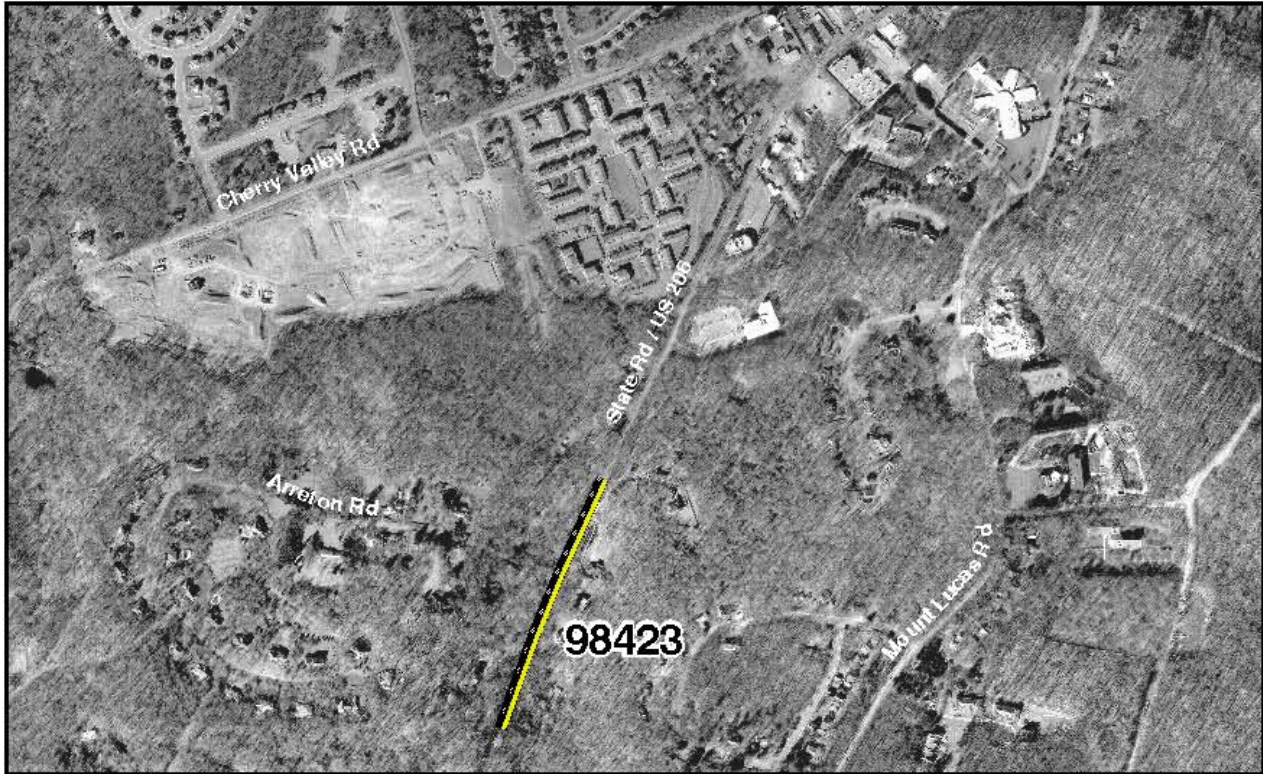
CJTF - Project Status Report - Winter 2005

US 206/Arreton Road, Drainage

Routes: US 206

Section: Route 206, vicinity of
Arreton Road

DBNUM: 98423



County: Mercer

Municipalities: Princeton Twp.

Sponsor: NJDOT

The existing 36-inch culvert at Arreton Road will be replaced with a 54-inch culvert as well as installing a Gabion lining to protect the eroded embankment on both sides of the roadway. A catch basin and connecting pipe to the existing culvert north of Arreton Road will be constructed at the bottom of the driveway to reduce ponding on Route 206. South of Arreton Road, the embankment protection will be composed of Gabion Baskets and Reno Mattresses, to limit the extent of tree clearing needed. North of Arreton Road, the lining will be composed entirely of Gabion Baskets.

Programmed in DVRPC's TIP for Right-of-Way Acquisition in Fiscal Year 2005 and Construction in Fiscal Year 2006 with authorization to seek National Highway System funding for both phases.

CJTF - Project Status Report - Winter 2005

US 206 Bypass

Routes: US 206 **Section:** From Belle Mead-Griggstown Road to Old Somerville Road **DBNUM:** 779



County: Somerset **Municipalities:** Hillsborough Twp.
Montgomery Twp.

Sponsor: NJDOT

This project will provide for construction of a segment of Route 206 on new alignment, bypassing a segment of highway which has serious congestion and safety problems. The segment will consist of four 12-foot travel lanes, two 12-foot outside shoulders, two 5-foot inside shoulders, a 20-foot grass median, and two 15-foot outside borders.

This is a multi-year funded project under the provisions of Section 1 of P.L. 1995 c. 108. Total design cost is \$11,625,000; total construction funding is anticipated to be \$81,200,000. Programmed in NJTPA's TIP for Final Design/Engineering in Fiscal Year 2005 with authorization to seek State transportation funding, Utilities in Fiscal Year 2007 (National Highway System funding), and Construction in Fiscal Years 2008 and 2009 with potential funding sources to be determined.

CJTF - Project Status Report - Winter 2005

US 206/Cherry Valley Road

Routes: US 206

Section: Intersection of Route 206
and Cherry Valley Road

DBNUM: 01320



County: Mercer

Municipalities: Princeton Twp.
Montgomery Twp.

Sponsor: NJDOT

This project will address proposed intersection improvements. It is reported that this intersection is heavily congested which is complicated by the configuration of the intersection.

Programmed in DVRPC's TIP for Concept Development in Fiscal Year 2006.

CJTF - Project Status Report - Winter 2005

US 206/Crusers Brook Bridge

Routes: US 206

Section: Route 206 Bridge over
Crusers Brook

DBNUM: 94060



County: Somerset **Municipalities:** Montgomery Twp.

Sponsor: NJDOT

This project will provide for the replacement of the existing structure which is in poor condition. This is due to the condition of the superstructure and the inadequate deck geometry. The structure is potentially scour critical, since the abutments are not founded on piles.

Programmed in NJTPA's TIP for Final Design/Engineering and Right of Way Acquisition in Fiscal Year 2005 and for Construction in Fiscal Year 2006. All phases are authorized to seek Federal Bridge Program funding.

CJTF - Project Status Report - Winter 2005

US 206 CSX Bridge Replacement

Route: US 206

Section: Route 206 Bridge over
CSX Rail Line

DBNUM: 94059



County: Somerset **Municipalities:** Montgomery Twp.

Sponsor: NJDOT

This project provides for the replacement of the existing 85-foot single-span bridge with a new 138-foot, single-span structure. The improvements will include a realignment of Route 206 to the west with a roadway section that will provide for one 12-foot travel lane, 10-foot shoulder and sidewalk in each direction. A new "T" intersection with a traffic signal for the relocated intersection of Route 206 and CR 601. The improvements would upgrade Route 206 and the adjacent roadways to improve their operational characteristics and safety throughout the project limits. The existing bridge will be open to traffic until the construction of the new structure is completed. This project will be bicycle/pedestrian compatible with shoulders and sidewalks provided on both sides of the roadway as well as crosswalks.

Programmed in NJTPA's TIP for Final Design/Engineering in Fiscal Year 2005 and Right-of-Way Acquisition in Fiscal Year 2006 with authorization to apply for State transportation funds. It is programmed for Construction in Fiscal Year 2007 with authorization to apply for National Highway System funding.

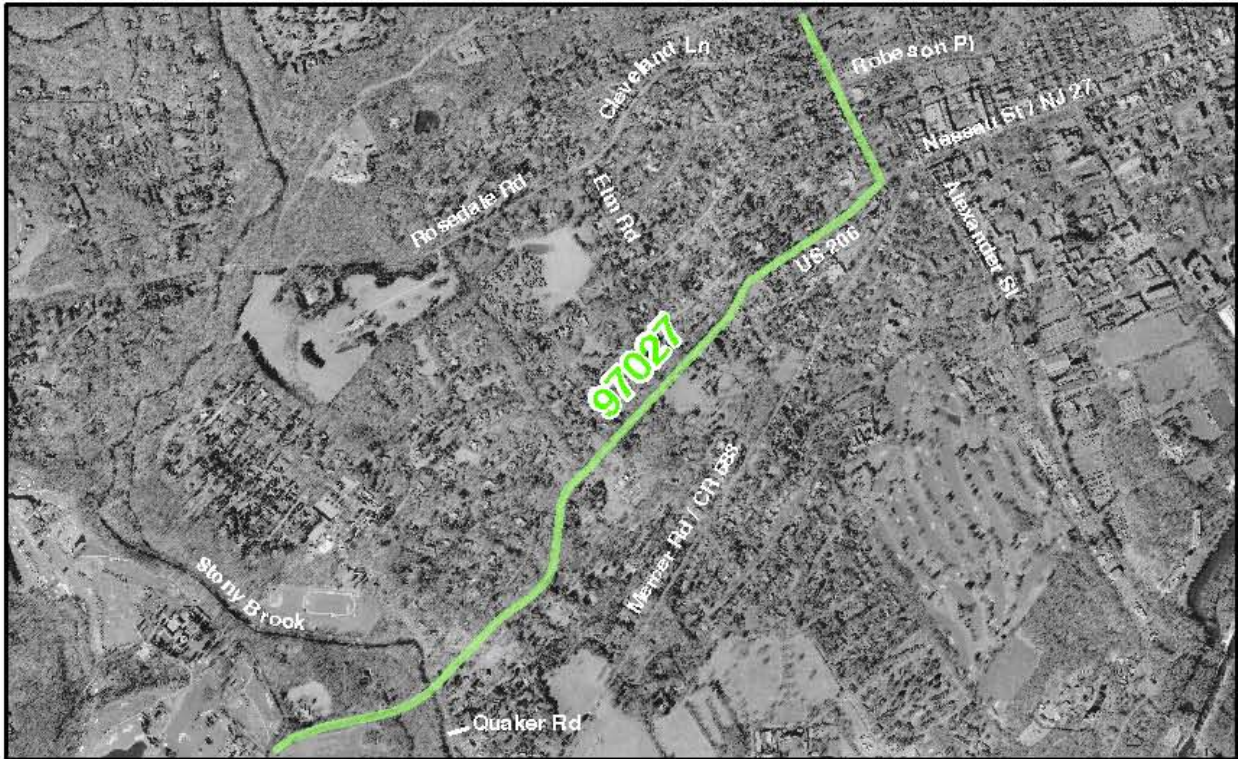
CJTF - Project Status Report - Winter 2005

US 206 Princeton Bicycle Improvements

Routes: US 206

Section: US 206 in Princeton
Stony Brook to Birch Ave.

DBNUM: 97027



County: Mercer

Municipalities: Princeton Twp.
Princeton Borough

Sponsor: NJDOT

The proposed project may provide bicycle improvements to correct and/or eliminate existing gaps in primarily compatible segments of Route 206. The project will extend from south of Stony Brook to Birch Avenue.

Programmed in DVRPC's TIP for Concept Development in Fiscal Year 2005 and for Feasibility Assessment in Fiscal Year 2006.

CJTF - Project Status Report - Winter 2005

US 206 Stony Brook Bridges

Routes: US 206

Section: Route 206 Bridge over
Stony Brook

DBNUM: 326



County: Mercer

Municipalities: Princeton Twp.

Sponsor: NJDOT

This project will provide for the proposed rehabilitation of the historic bridge (Route 206 over Stony Brook) and replacement of the adjacent structure (Route 206 over Flood Plain).

Programmed in DVRPC's TIP for Preliminary Design in Fiscal Year 2005.

CJTF - Project Status Report - Winter 2005

US 206 Wetland Preservation

Routes: US 206

Section: Various

DBNUM: 02348



County: Somerset

Municipalities: Various

Sponsor: NJDOT

The wetland preservation initiative will satisfy the 1:1 wetland mitigation requirement by the NJ Department of Environmental Protection for the wetland impacts associated with the Route 206 widening (sections 15J and 15N) and Route 206 Bypass (sections 14A and 15A) projects.

Programmed in NJTPA's TIP for Right-of-Way Acquisition in Fiscal Year 2008.

CJTF - Project Status Report - Winter 2005

US 206 Widening

Routes: US 206

Section: Route 206 from
Old Somerville Road to
Brown Avenue (Section 15N)

DBNUM: 780



County: Somerset **Municipalities:** Hillsborough Twp.

Sponsor: NJDOT

This project will provide for the widening of the US 206 between Old Somerville Road and Brown Avenue to increase the number of lanes from two lanes to four lanes and will include shoulder widening, median barrier construction, and associated intersection improvements. The project will also be bicycle/pedestrian compatible.

Programmed in NJTPA's TIP for Utilities in Fiscal Year 2007 with authorizations to apply for National Highway System funding. It is programmed for Construction in Fiscal Year 2008.

CJTF - Project Status Report - Winter 2005

US 206, North of Cherry Hill Road, Drainage Improvement

Routes: US 206 **Section:** North of Cherry Hill Rd

DBNUM: 04318



County: Mercer

Municipalities: Princeton Twp.

Sponsor: NJDOT

This area consists mostly of residential and commercial uses with large amounts of vehicular traffic. This section of Route 206 is generally curbed. The existing roadway drainage system discharges into Mountain Brook Branch 2 west of Route 206. A segment of culvert crossing under Route 206 has collapsed and is now being repaired by NJDOT Operations. During moderate and heavy storms, runoff bypassing Route 206 drainage systems floods Cliff Town Center stores and causes unsafe traveling conditions.

Programmed in DVRPC's TIP for Feasibility Assessment in Fiscal Year 2005. It is programmed for Preliminary Design in Fiscal Year 2006.

CJTF - Project Status Report - Winter 2005

US 206, North of Quaker Road, Drainage Improvement

Routes: US 206 **Section:** North of Quaker Rd

DBNUM: 04319



County: Mercer

Municipalities: Princeton Twp.

Sponsor: NJDOT

This section of Route 206 is curbed. Roadway runoff travels along the curb line into existing inlets near the low point. Two ponds northwest of Route 206 also discharge into the existing inlet on Route 206 southbound near the low point. The existing inlet on Route 206 northbound nearest the low point discharges into a pond which eventually flows into Stony Brook. The system currently does not have enough inlets to catch the runoff. During moderate and heavy storms, the low point gets inundated with stormwater, causing unsafe driving conditions.

Programmed in DVRPC's TIP for Feasibility Assessment in Fiscal Year 2005. It is programmed for Preliminary Design in Fiscal Year 2006.

CJTF - Project Status Report - Winter 2005

Van Dyke Road Bridge

Routes:

Section: Van Dyke Road Bridge
over Trenton Line

DBNUM: 99315



County: Mercer

Municipalities: Hopewell Twp.

Sponsor: NJDOT

This project will rehabilitate the existing Van Dyke Road bridge and Greenwood Avenue bridge over Trenton Branch of the CSX railroad. This project will replace the superstructure with minimum or no roadway improvements for both bridges. A temporary pedestrian structure will be provided at the Greenwood Avenue bridge to provide pedestrian access during construction.

Programmed in DVRPC's TIP for Preliminary Design in Fiscal Year 2005.

CJTF - Project Status Report - Winter 2005

Woodfern Road Bridges

Route: Section: Various

DBNUM: NS9901



County: Somerset Municipalities: Hillsborough Twp.
Branchburg Twp.

Sponsor: Somerset
County

This project concerns three bridges on Woodfern Road, north of Three Bridges Road and south of the railroad tracks. They cross the South Branch of the Raritan River and adjacent wet areas of the flood plain. The project includes the rehabilitation of county bridges 18B0511 and 18B0512, and the replacement of county bridge 18B0510. Bridges 18B0511 and 18B0512 are historically significant and eligible for listing on the National Register of Historic Places. All three bridges are structurally deficient due to the condition of their superstructures. The north roadway approach to these structures will also be improved as part of this project.

Programmed in NJTPA's TIP for Construction in Fiscal Year 2005. This project is authorized to seek Surface Transportation Program - Urban Allocation (NJTPA) funds.

NJ Turnpike Authority Projects

CJTF - Project Status Report - Winter 2005

NJ Turnpike Widening

Routes: NJTPK **Section:** Interchange 6 to
Interchange 8A

DBNUM: TPK0501



County: Mercer, Middlesex
Burlington

Municipalities: Various

Sponsor: NJTPK

Note: aerial map above only shows part of this project due to its length. See map of all projects at the end of the report to see full extent.

This project will provide preliminary engineering and environmental studies to assess the feasibility of widening the Turnpike between Interchanges 6 and 8A. The study will be initiated in the first quarter of 2005 and is expected to take 18 to 24 months to complete.

CJTF - Project Status Report - Winter 2005

NJ 92

Routes: NJ 92 **Section:** NJ Turnpike Exit 8A to US 1

DBNUM: TPK111



County: Middlesex

Municipalities: South Brunswick Twp.
Plainsboro Twp.
Monroe Twp.

Sponsor: NJTPK

Note: aerial map above only shows part of this project due to its length. See map of all projects at the end of the report to see full extent.

This project will provide a four lane limited access toll facility from NJ Turnpike Exit 8A in Monroe to US 1 in South Brunswick. The Draft Environment Impact Statement has been completed. A public hearing was held on May 20, 2004 and the public comment period expired on June 14, 2004. The U.S. Army Corps of Engineering is developing a final environmental impact statement, which will incorporate all comments received. A USACE permit decision is anticipated to be rendered in early 2005.

To alleviate operational problems at the intersection of Route 32 and County Route 535,

an interim construction contract for the construction of a new exit ramp from Turnpike Interchange 8A was awarded in February, 2004 and is expected to be completed in the summer of 2005. The work to be performed on this contract will be consistent with the proposed improvements and final configuration of the Route 92 project.

Programmed for Final Design/Engineering, Right-of-Way Acquisition and Construction using New Jersey Turnpike Authority funds.

Transit TIP Projects

CJTF - Project Status Report - Winter 2005

Transit Rail Initiatives

New Jersey Transit Project

DBNUM: T300



County: Various

Municipalities: Various

Sponsor: NJ Transit

Potential projects in this category include (in no rank order):

HBLR Extension to 8th Street Bayonne & to Tenaflly (on Northern Branch); Passaic-Bergen rail service on the NYS&W east of Hawthorne using Diesel Multiple Unit (DMU) passenger equipment; Restoration of commuter rail service on the NYS&W west of Hawthorne; Restoration of commuter rail service to Lackawanna Cutoff; Commuter Rail Spur to the Meadowlands Sports Complex; West Shore--Hoboken to West Haverstraw; Union County light rail project (third phase of NERL (second phase terminus to Elizabeth CBD); **Restoration of commuter rail service on the West Trenton line**; River Line LRT Capitol Extension; Second Phase of River Line LRT (Glassboro to Camden); Second Phase of NERL (Newark Penn Station to Newark Liberty

International Airport); **MOM Commuter rail extension**; Extension of Cape May Seashore Line north to Hammonton (to Atlantic City Rail Line); Commuter Rail extension to Phillipsburg. "Other Funding" is also provided to advance projects dependent on federal earmarks; other non-federal (including private) funding; and/or state resources available beyond planned levels.

Programmed in DVRPC and NJTPA TIPs for Planning Study in Fiscal Years 2005-2009.

CJTF - Project Status Report - Winter 2005

Section 5310 Program

New Jersey Transit Project

DBNUM: T150

This program provides for the purchase of small buses or van-type vehicles with lifts for private or non-profit agencies that serve the elderly and persons with disabilities. Formerly known as Section 16 Program.

Programmed in NJTPA's and DVRPC's TIPs for Capital Asset Construction in Fiscal Years 2005 - 2009. In Fiscal Years 2005 and 2006 Elderly and Persons with Disability Program funding will be used. In Fiscal Year 2007 this program is authorized to seek \$.775 million in Other funding for projects in the DVRPC area and \$2.570 million for projects in the NJTPA area.

County: Various

Municipalities: Various

Sponsor: NJ Transit

CJTF - Project Status Report - Winter 2005

Section 5311 Program

New Jersey Transit Project

DBNUM: T151

This program provides funding for rural public transportation program. Formerly known as Section 18 Program.

Programmed in NJTPA's and DVRPC's TIPs for Capital Asset Construction in Fiscal Years 2005 - 2009. In Fiscal Years 2005 and 2006 Rural Public Transportation funding and state matching funds will be used. In Fiscal Year 2007 this program is authorized to seek \$1.850 million in Other funding for projects in the DVRPC area and \$5.690 million in the NJTPA area.

County: Various

Municipalities: Various

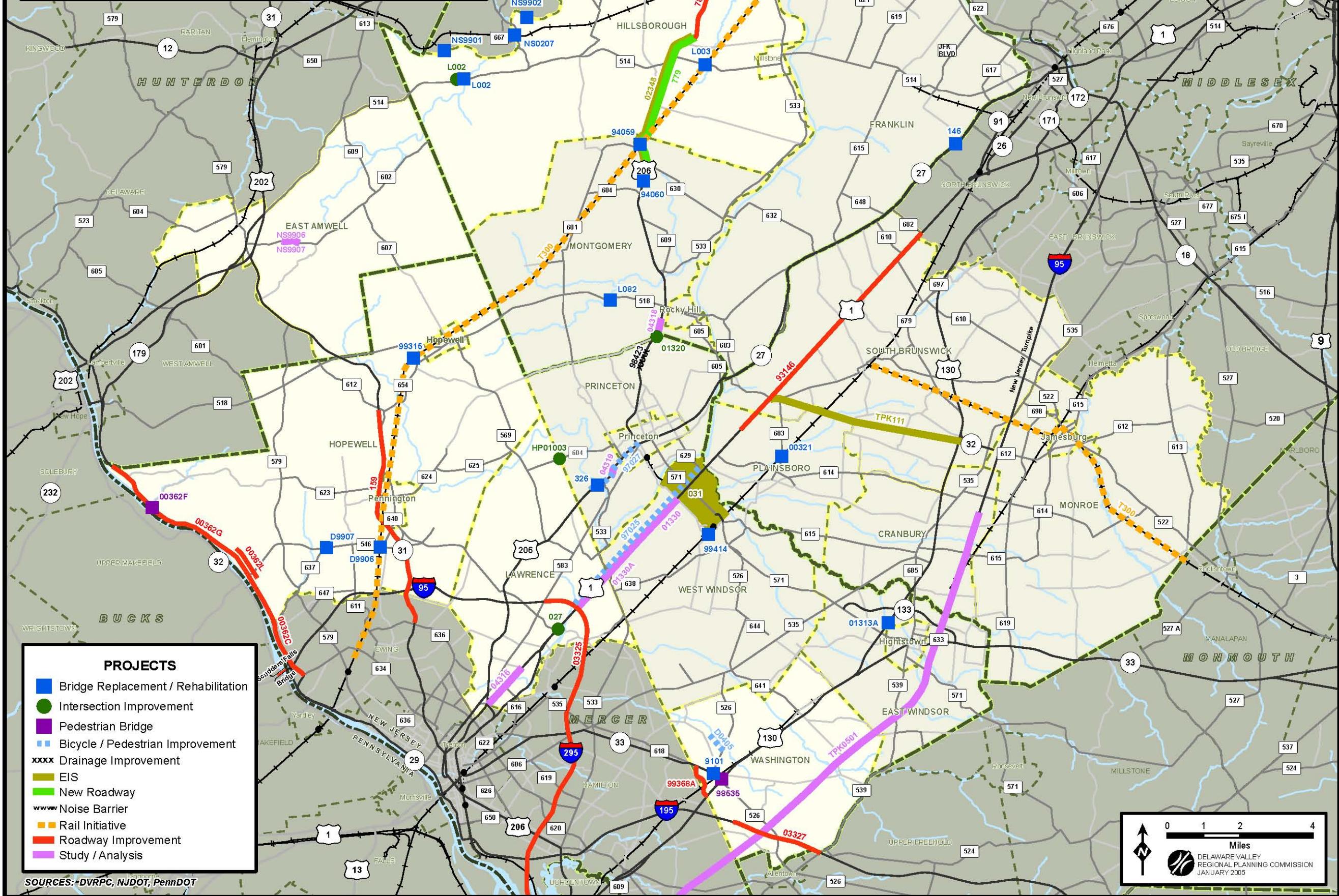
Sponsor: NJ Transit

Map & Index of Projects by DBNUM

Index of Projects by DBNUM

Name	Page	DBNUM Text
I-287 Raritan River Crossing Needs Analysis	19	9169
Alexander Road Bridge over Amtrak	7	99414
Schalks Station Road Bridges Rehabilitation	31	00321
NJ 29, Guiderail	23	00362C
NJ 29, Baldpate Mountain Bicycle/Pedestrian Improvement	22	00362F
NJ 29, Rockfall Mitigation	24	00362G
NJ 29, Washington Crossing State Park, Scenic Byway	25	00362L
US 130 Bridge Deck Replacements	39	01313A
US 206 Cherry Valley Road Intersection Improvements	43	01320
US 1 Congestion Management & Concept Development Study	34	01330
US 1, Nassau Park Blvd to I-95, Safety Improvements	37	01330A
US 206 Wetland Preservation	48	02348
US 1 Franklin Corner Road Intersection Improvement	35	027
US 1/CR 571 Penns Neck Area EIS	38	031
I-295 Rehabilitation from I-195 to US 1	20	03325
I-195 Rehabilitation Westbound	18	03327
US 1 Business, Brunswick Circle to Texas Avenue	33	04316
US 206, North of Cherry Hill Road, Drainage Improvement	50	04318
US 206, North of Quaker Road, Drainage Improvement	51	04319
NJ 27 Six Mile Run Bridge	21	146
NJ 31, Ewingville/Upper Ferry Road to CR 518 TDD Project	26	159
US 206 Stony Brook Bridges	47	326
US 206 Bypass	42	779
US 206 Widening Old Somerville Road - Brown Avenue	49	780
NJ 33 Conrail Bridge Replacement	27	9101
US 1 Widening	36	93146
US 206 CSX Bridge Replacement	45	94059
US 206 Crusers Brook Bridge	44	94060
US 1 Bicycle/Pedestrian Improvements	32	97025
US 206 Princeton, Bicycle Improvements	46	97027
US 206 Arretton Road Drainage	41	98423
US 130, Pedestrian Bridge Washington Township	40	98535
Van Dyke Road Bridge over Trenton Branch	52	99315
NJ 33 Washington Township Bypass	29	99368A
Hutchinson Trail, Washington Township	17	D0405
CR 546 Washington Crossing-Pennington Road Bridge over Conrail	12	D9906
CR 546 Washington Crossing-Pennington Road Bridge	11	D9907
CR 604/Provinceline Road Intersection Improvements	15	HP01003
CR 514 Amwell Road Bridge over Neshanic River	8	L002
CR 514 Amwell Road Railroad Bridge	9	L003
CR 518 Bedens Brook Bridge	10	L082
Elm Street Bridge	16	NS0207
Woodfern Road Bridges	53	NS9901
Opie/River Road Bridge	30	NS9902
CR 602 Bridge over Tributary of Back Brook	14	NS9906
CR 602 Bridge over Back Brook	13	NS9907
Section 5310 Program (not on map)	65	T150
Section 5311 Program (not on map)	66	T151
Transit Rail Initiatives (only West Trenton Line project on map)	63	T300
NJ 92	58	TPK111
New Jersey Turnpike Widening (Int. 6 - 8A)	57	TPK0501

CENTRAL JERSEY TRANSPORTATION FORUM PLANNED PROJECTS



SOURCES: DVRPC, NJDOT, PennDOT





**Delaware Valley
Regional Planning
Commission**

DVRPC

**THE BOURSE BUILDING, 8TH FLOOR
111 SOUTH INDEPENDENCE MALL EAST
PHILADELPHIA, PA 19106**

WWW.DVRPC.ORG

215.592.1800