

# PLANNING BEYOND THE PIPELINE



## *IDENTIFYING TRANSPORTATION NEEDS IN THE NEW JERSEY COUNTIES*



July 2000



**DELAWARE VALLEY  
REGIONAL PLANNING COMMISSION**



# **PLANNING BEYOND THE PIPELINE**

*IDENTIFYING TRANSPORTATION NEEDS IN THE NEW JERSEY COUNTIES*

July 2000



**DELAWARE VALLEY  
REGIONAL PLANNING COMMISSION**

---

Created in 1965, the Delaware Valley Regional Planning Commission (DVRPC) is an interstate, intercounty and intercity agency that provides continuing, comprehensive and coordinated planning to shape a vision for the future growth of the Delaware Valley region. The region includes Bucks, Chester, Delaware, and Montgomery counties, as well as the City of Philadelphia, in Pennsylvania; and Burlington, Camden, Gloucester and Mercer counties in New Jersey. DVRPC provides technical assistance and services; conducts high priority studies that respond to the requests and demands of member state and local governments; fosters cooperation among various constituents to forge a consensus on diverse regional issues; determines and meets the needs of the private sector; and practices public outreach efforts to promote two-way communication and public awareness of regional issues and the Commission.



Our logo is adapted from the official DVRPC seal, and is designed as a stylized image of the Delaware Valley. The outer ring symbolizes the region as a whole, while the diagonal bar signifies the Delaware River. The two adjoining crescents represent the Commonwealth of Pennsylvania and the State of New Jersey.

DVRPC is funded by a variety of funding sources including federal grants from the U.S. Department of Transportation's Federal Highway Administration (FHWA) and Federal Transit Administration (FTA), the Pennsylvania and New Jersey departments of transportation, as well as by DVRPC's state and local member governments. (A sentence regarding special sources of funding may be inserted here.) The authors, however, are solely responsible for its findings and conclusions, which may not represent the official views or policies of the funding agencies.

---

## CONTENTS

INTRODUCTION .....	1
NJDOT PROJECT DEVELOPMENT PROCESS .....	1
Problem Statement .....	1-2
Planning Work Program .....	2
Scoping Work Program .....	3
Capital Program .....	3-4
PROJECT METHODOLOGY .....	7-8
NEXT STEPS .....	8-9

## FIGURE

1. New Jersey DOT Project Development Pipeline .....	5
--	---

## TABLE

1. Projects Identified for Official Problem Statements .....	8-9
--	-----

## APPENDICES

A. Burlington County Inventory and Map Non-Pipeline Transportation Problems .....	A-1
B. Camden County Inventory and Map Non-Pipeline Transportation Problems .....	B-1
C. Gloucester County Inventory and Map Non-Pipeline Transportation Problems .....	C-1
D. Mercer County Inventory and Map Non-Pipeline Transportation Problems .....	D-1
E. NJDOT Official Problem Statement Form .....	E-1



## INTRODUCTION

The purpose of this on-going project is to identify the transportation needs of the four county New Jersey portion of the region which are not yet being addressed in the New Jersey Project Development Process. These needs are to be considered without regard to constraints such as financial limitations or political support. Such constraints will be addressed later in the project development pipeline. The product of this effort is an inventory of short-term and long-term needs and improvement concepts for various modes.

DVRPC's adopted long range transportation plan is used as the starting point for developing an inventory of these needs. The Plan identifies a series of projects, programs and studies to address existing and anticipated transportation needs. However, the list of projects in the Plan has been constrained to the limits of anticipated financial resources based on a financial environment similar to that which existed in the early 1990's. Various other sources are used to identify needs for the inventory without regard for financial limitations. Sources such as the NJ Subcommittee of the RTC and other stakeholders play a major role in the ongoing development of the inventory. The DVRPC Work Program, which contains needs and recommendations from corridor and area studies, is reviewed for potential problem areas that can be included into the inventory. The Volume/Capacity ratio contained in the New Jersey Congestion Management System is used to identify potential problem areas. The list of transportation needs identified in the Intermodal Management System have been incorporated in the inventory. The NJDOT Pavement and Bridge Management systems were also analyzed to identify potential problem areas.

As part of this updating process the NJ counties/cities were asked to identify which of the needs were a high priority. These needs then had a problem statement developed for them using NJDOT's Problem statement form. The "Problem Statement" is the project initiation stage for the New Jersey Department of Transportation's (NJDOT) Project Development Process. The NJDOT' project development process is explained in more detail in the next section.

## NEW JERSEY DOT PROJECT DEVELOPMENT PROCESS

A generalized description of NJ DOT's project development process is presented below and displayed on figure 1:

**Problem Statement:** This is officially the first step in the process and requires that a written description of the problem be submitted to NJDOT's Bureau of Capital Program Development (BCPD). This written description can be prepared and submitted by any number of sources, such as: county governments, municipal officials, general public, MPO's, TMA's or business/civic groups. Problem statements can also be generated

internally by various NJDOT units.

Traditionally, problem statements have been submitted in varying amounts of detail from very sketchy to very detailed. NJDOT is in the process of preparing a formalized problem statement submittal process and soon will have information packets available. This should help to standardize the type of descriptive information submitted about a specific problem. The problem statement should include the following important information: project location and limits, nature of the problem (capacity, operational, safety), identification of individuals or groups who are sponsoring or supporting the project, potential environmental/historic issues, accident history, traffic volumes and any other specific issues related to this problem.

The problem statement is reviewed by the Capital Program Development Committee (CPDC) and if approved it is included in the planning work program or the scoping work program and assigned to a lead unit.

Some problems, whose need and scope are clearly defined and which by definition are exempt from certain environmental reviews, may be assigned directly to the scoping work program. Otherwise, problem statements are generally assigned first to the planning work program and will move from there to the scoping work program, as described below. DVRPC has requested that all problem statements pertaining to the four county region be provided to DVRPC for review and prioritization prior to presentation and assignment by the CPDC.

**Planning Work Program:** During this phase, the details of the problem statement are identified and further refined through the Concept Development Process. The purpose of Concept Development is to deliver projects to Scoping with a well defined need and a recommended concept that has been environmentally screened and has received community buy-in. The Concept Development Process includes the following major elements:

Evaluate project need - determine the study scope and study area are determined; collect traffic and accident data for a needs assessment; identify transit, bicycle and pedestrian issues; involve the public to discuss problems and potential solutions.

Analyze physical deficiencies - define geometric, pavement, structural (bridge), drainage, bicycle/pedestrian and transit deficiencies through field views, management systems and other appropriate data sources.

Conduct environmental screening - identify environmental sensitivities within the study area through coordination with NJ DEP, other appropriate agencies and field views.

Include early and intensive public involvement - meet with staff, local officials and the community to get their input on transportation problems, causes and magnitude of the problems, potential solutions and issues; establish a core group of internal NJDOT units to gain input into the process.

Fulfill CMS requirements - consult with the appropriate MPO to determine if these requirements are applicable for the potential project under study; coordinate with the



MPO to satisfy these requirements.

Define complimentary strategies - assess the ability of the CMS strategies to alleviate the problem. If it is determined that any particular strategies can eliminate the problem then they should be advanced for further study and implementation. If they don't eliminate the need for a capacity improvement, they should be considered for implementation as complimentary strategies as part of the project in an effort to prolong the service life of the improvement.

Conduct alternatives analysis for potential concepts - if a capacity improvement is warranted, develop and evaluate alternative schemes in terms of traffic, design, preliminary cost, community buy-in, and environmental constraints.

At the successful conclusion of this process, the potential project becomes a candidate for the Scoping Work Program.

**Scoping Work Program:** The scoping process contains two separate stages: Feasibility Assessment (FA) and Final Scope Development (FSD). During the FA stage, the Bureau of Project Scope Development (BPSD) performs sufficient engineering analysis to determine whether the concept submitted with the problem statement can be feasibly evolved into a project in light of any environmental constraints and community issues. If it can not be reasonably demonstrated that environmental approvals and community support are forthcoming, the project will neither become a project nor pass into FSD stage. As the first part of this stage, a project screening takes place in which the problem statement is reviewed for completeness, a scoping team is assembled and scoping meetings are initiated. The other part of this stage includes the development of project schemes. This entails lining up environmental support, initiating community involvement, obtaining right-of-way input, resolving major utility issues, reviewing access code implications and determining the initially preferred alternative.

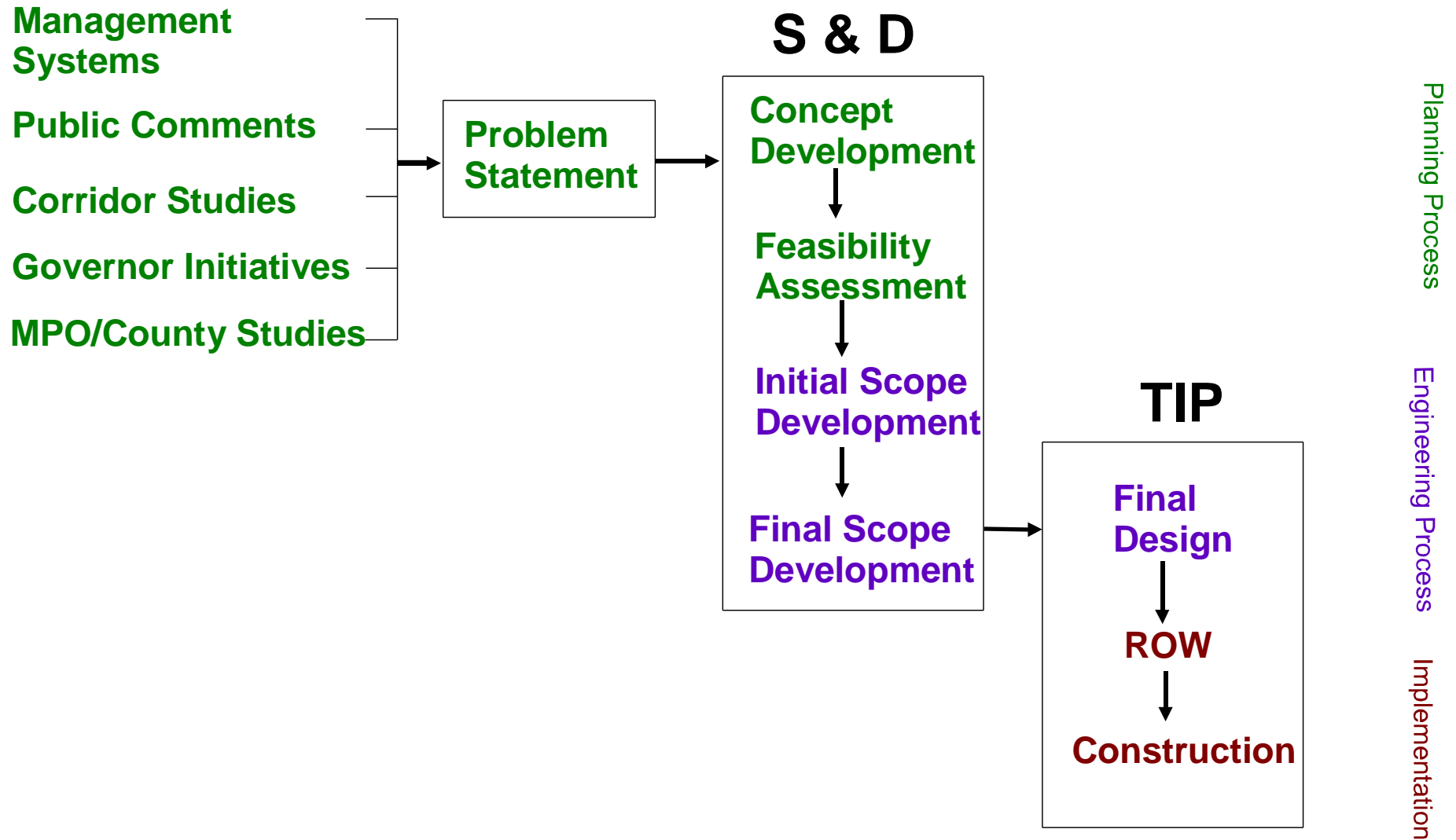
The second stage, FSD, produces a recommended alternative which defines the project scope for final design. FSD includes advancing preliminary engineering far enough to complete the environmental documents, obtaining formal community input and receiving approval for any design exceptions.

At the conclusion of this stage, the BPSD makes a presentation to the CPDC regarding the potential project. If deemed a worthy project, it will enter the draft project pool as a candidate for the Capital Program. If the project is determined to be "fatally flawed", it will be recommended for termination or recycled for reconsideration as part of Concept Development (CD). However, there may be some instances where it may be warranted to conduct additional scoping within the BPSD in order to develop a more feasible alternative to address the project need. DVRPC has requested and NJDOT supports a larger role for the MPO in the public involvement efforts during both the CD and FA stages.

**Capital Program:** Projects successfully completing final scope development are moved into a project pool from which the capital program is developed. The major inputs in determining whether a project moves from the project pool onto the capital program include

its consistency with the Department's Capital Investment Strategy, MPO priorities, other known competing interests, critical goals of the Department, current commitments and funding assumptions. The desired result of this process is a financially constrained 3-Year Plan that meets the most critical needs/goals as identified in the Capital Improvement Strategy. Projects making it onto the Capital Program will now have funding budgeted to complete the necessary phases (final design, right-of-way acquisition, construction) for implementation.

# Project Development Pipeline





## **PROJECT METHODOLOGY**

The methodology utilized takes advantage of data in the state's management systems. The methodology relies heavily on management system data. The management systems that were the focus on in this phase of the project were the Bridge Management System, the Congestion Management System, the Pavement Management System and the Intermodal Management System. Other management systems that will be looked at and used in the future, include the Incident Management System and the Safety Management System.

The various management systems were used where possible in conjunction with one another through a GIS environment. Creating thematic maps, based on the data in the management systems, is a much more efficient way to identify the problem areas in our region. To achieve this the databases must be able to be link together by a common element. This common element, the Standard Route Identifier (SRI), is beginning to be utilized by the department's various units. The most notable application is the NJDOT Straight Line Diagram program. The SRI is a ten digit number that identifies the County, Municipality, Route Number, Suffix and Direction for a particular Roadway segment. We are working with NJDOT to have the SRI incorporated in all of the management systems.

### **Expanded New Jersey Congestion Management System (CMS)**

The volume/capacity ratios contained in the NJCMS were utilized as an indicator of congestion in an effort to identify the most heavily congested segments of roads in DVRPC's New Jersey Counties. The network of roads considered in this exercise will be those contained in NJ DOT's Congestion Management System. However, the data was enhanced by using the DVRPC regional model. The combination of both of these sources gives the network a better coverage of roads in the NJ Counties and projection of future congestion levels. All of the links in the network will be ranked from worst to best using the volume to capacity ratio ( $v/c$ ) weighted by volume as the method to identify which links in the network experience the worst congestion.

### **Expanded NJ DOT Pavement Management System (PMS)**

The NJPMS collects pavement data on the federal aid roadway system for New Jersey. The data that is collected on the network contains various characteristics for each roadway segment, including geometry and condition ratings. NJDOT and its consultants update the data in the PMS on a 2-3 year cycle. The condition ratings that are collected are a useful tool to help identify where there are problem segments on county roads. The Final Pavement Rating (FPR), which takes into account various other condition ratings for the segment, has been chosen as a good indicator of the overall condition of the segment. Using the FPR, the segments can be sorted showing which segments are in need of the most work.

## **NJDOT Bridge Management System (BMS)**

NJDOT collects bridge data on all the bridges over 20 feet in New Jersey. Structures under the twenty-foot span are considered a culvert and are not in the NJBMS. Data contained in the BMS range from geometric characteristics to roadway characteristics to various condition ratings for each bridge. Similar to the NJPMS, the NJBMS has a rating, the sufficiency rating, that is an indicator of the overall condition of the bridge. This rating is a combination of many other rating indices for the bridge. The bridges will be ranked based on this rating from worst to best. The bridges with the lowest ratings will be added to the inventory.

## **DVRPC Intermodal Management System (IMS)**

The Intermodal Management System is a systematic process for identifying and evaluating improvements which will expedite the transfer of people and goods between modes of travel. The report that DVRPC completed identified an inventory of potential improvement strategies for a set of intermodal passenger stations and freight terminals in South Jersey.

## **NEXT STEPS**

The inventory has been reviewed by the four NJ counties and a list of high priority problems were identified by each county. These high priority problems will have formal problem statements written for them and to be submitted to NJDOT for entry into the Study and Development Program.

The Planning Beyond The Pipeline Inventory should be viewed as a continually evolving document in which needs drop off as they are moved into the project development process and other needs are added as they are identified. To ensure that the inventory continues to evolve in a direction that can be useful for everyone, quarterly meetings will be held to discuss any new problems or ideas. This inventory should become a valuable tool to the counties and NJDOT as they continue to address the region's transportation needs and feed the project pipeline.

The following projects had problem statements developed for them and were sent to NJDOT for consideration to be incorporated into the Study and Development Program:

ID#	Location
B020	NJ 73 - Evesham Rd (CR 544) /Marlton Bypass
B022	NJ 73 - North Broad St

B023	Fork Landing Rd - Bridge over North Branch of the Pennsauken Creek
C005	CR 534 Improvements - NJ 42 to CR 759
C007	CR 561 Traffic Flow Improvements - NJ 154 to CR 673
C013	CR 706 Corridor Improvements - CR 536 Spur to CR 689
C021	I-676 S. of Main Branch Newton Creek to S. of North Branch Newton Creek
G007	NJ 47 - NJ 55 to 5 Points (NJ 41, CR 630, CR 603
G033	Five Points Intersection (NJ 47,NJ41, CR 630, CR 603)
G034	Intersection of NJ 77 and CR 538
G035	Intersection of NJ 45 and CR 538
G036	Intersection of NJ 42 and CR 655
G037	NJ 42 from A.C. Expressway to CR 655
M009	CR 571 - Wallace Cranbury Rd to Clarksville Rd
M013	Alexander Rd - Bridge over Amtrak
M014	Lanning Blvd - Linkage road
M017	Robbinsville Area Improvements
M022	NJ 33 - CR 526 to CR 618 - <i>Relieve congestion</i>



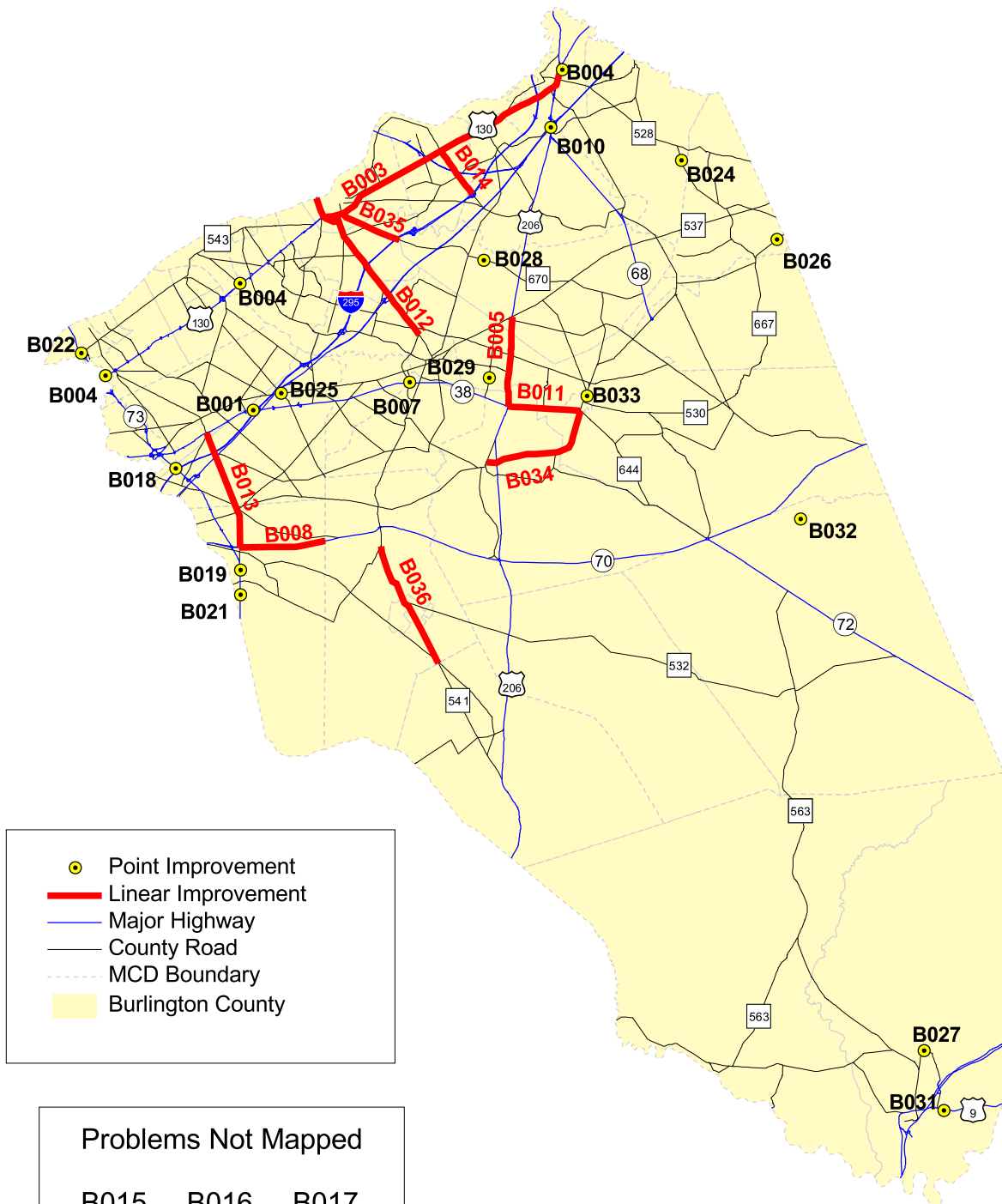


# **APPENDIX A**

## **BURLINGTON COUNTY**



# Inventory of Non-Pipeline Transportation Problems: Burlington County





**INVENTORY OF  
NON-PIPELINE TRANSPORTATION PROBLEMS  
BURLINGTON COUNTY**

<b>ID #</b>	<b>Location</b>	<b>Problems</b>	<b>Source</b>	<b>Improvement Concept</b>	<b>Mgmt Sys</b>	<b>SDRP Center or Distressed</b>	<b>Stakeholders</b>	<b>Status</b>
B001	I-295 Park and Ride Lot at NJ 38 Mount Laurel	Cong, Mobl, AQ (D)	DVRPC LRP	Construct park and ride lots	CMS		Lead: NJ DOT Assist: County, municipalities, NJTransit	
B003	US 130 Improvements Wood St to US 206 Burlington City, Burlington Twp, Florence, Bordentown	Cong, Mobl, Safe (E)	DVRPC LRP	Widen to 6 lanes, construct median and jughandles	PMS	Burlington City-D	Lead: NJ DOT Assist: County, municipalities, NJTransit	
B004	US 130 Park and Ride Lot Prog. at US 206 at NJ TPK at Creek Road (CR 636) at NJ 73	Cong, Mobl, AQ (D)	DVRPC LRP	Construct park and ride lots	CMS		Lead: NJ DOT Assist: County, municipalities, NJ TPK, NJTransit	
B005	US 206 CR 537 to CR 530 Springfield, Eastampton, Southampton, Pemberton	Cong (C)	County	Widen to 4 lanes			Lead: NJ DOT Assist: County, municipalities	S&D 9212
B007	NJ 38 Park and Ride Lot at CR 541 Lumberton, Hainesport	Cong, Mobl, AQ (D)	DVRPC LRP	Construct a park and ride lot	CMS PMS		Lead: NJ DOT, Assist: County, municipality, NJTransit	

**INVENTORY OF  
NON-PIPELINE TRANSPORTATION PROBLEMS  
BURLINGTON COUNTY**

<b>ID #</b>	<b>Location</b>	<b>Problems</b>	<b>Source</b>	<b>Improvement Concept</b>	<b>Mgmt Sys</b>	<b>SDRP Center or Distressed</b>	<b>Stakeholders</b>	<b>Status</b>
B008	NJ 70 Corridor Improvements East of Marlton to Medford Evesham, Medford	Cong, Mobil, Safe, AQ (C)	County DVRPC LRP NJ OSP	Widen	PMS		Lead: NJ DOT Assist: County, municipalities	S&D 9049
B010	NJ Turnpike Park and Ride Lot at US 206 Bordentown Twp	Cong, Mobil, AQ (D)	DVRPC LRP	Construct park and ride lots	CMS		Lead: NJ TPK Assist: NJ DOT, County, municipalities	
B011	CR 530 US 206 to CR 616 (Hanover St) Southampton, Pemberton	Cong, Safe (D)	County TEA-21	Improve turning movements and drainage, add shoulders		Pemberton - D	Lead: County Assist: municipalities	Cap Plan D9912
B012	CR 541 US 130 to Mt Holly Bypass Burlington City, Burlington Twp, Westampton	Cong, Safe (D)	County	Widen where necessary, reconfigure Interchange	CMS	Burlington City-D	Lead: County Assist: NJ DOT, municipalities	
B013	CR 607 NJ 38 to NJ 70 Mount Laurel, Evesham	Cong, Safe (D)	County	Provide shoulders and center left turn lanes			Lead: County Assist: municipalities	
B014	CR 656 US 130 to I-295 Florence	Cong, Mobil (E)	County	Widen, improve turning movements as required by new turnpike interchange			Lead: County Assist: NJ DOT, NJ Tpk, municipalities	

**INVENTORY OF  
NON-PIPELINE TRANSPORTATION PROBLEMS  
BURLINGTON COUNTY**

<b>ID #</b>	<b>Location</b>	<b>Problems</b>	<b>Source</b>	<b>Improvement Concept</b>	<b>Mgmt Sys</b>	<b>SDRP Center or Distressed</b>	<b>Stakeholders</b>	<b>Status</b>
B015	Burlington City Traffic Signal System Burlington City	Cong, AQ (C)	DVRPC LRP	Install closed loop system along US 130	PMS	Burlington City-D	Lead: County Assist: NJ DOT, municipality	Cap Plan D9911
B016	Pedestrian Linkages Beverly City	Mobl, Safe, AQ (D)	NJ OSP	Provide a system of pedestrian linkages throughout the City of Beverly		Beverly City-D	Lead: County Assist: NJ DOT, municipality	
<b>B017</b>	Feeder Bus Service Countywide	Mobl, Cong, AQ (E)	NJ OSP	Provide feeder bus service to the proposed light rail line from Camden to Trenton			Lead: NJ Transit Assist: County, municipalities	
B018	NJ 73 at I-295 Maple Shade	Cong, Mobl, Safe (E)	NJ 73 Task Force	Replace I-295 southbound off ramp	CMS PMS	Maple Shade	Lead: NJ DOT Assist: County, municipalities	
B019	NJ 73 at Brick Rd Evesham	Cong, Mobl (E)	NJ 73 Task Force	Widen Brick Rd and intersection improvements	CMS PMS		Lead: NJ DOT Assist: County, municipalities	
B021	NJ 73 at Ardsley Dr Evesham	Safe, Cong, Mobl (C)	NJ 73 Task Force	Intersection Improvement	CMS		Lead: NJ DOT Assist: County, municipalities	
B024	CR 528 (Chesterfield Jacobstown Rd) Bridge over Branch of Blacks Creek Chesterfield	Safe, Mobl (D)	LSC	Bridge improvement			Lead: County Assist: municipality	

**INVENTORY OF  
NON-PIPELINE TRANSPORTATION PROBLEMS  
BURLINGTON COUNTY**

<b>ID #</b>	<b>Location</b>	<b>Problems</b>	<b>Source</b>	<b>Improvement Concept</b>	<b>Mgmt Sys</b>	<b>SDRP Center or Distressed</b>	<b>Stakeholders</b>	<b>Status</b>
B025	CR 537 (Marne Highway) at CR 686 (Hartford Rd) Mount Laurel	Cong, Mobl, Safe (C)	LSC	Intersection improvements			Lead: County Assist: municipality	
B026	CR 616 (Cookstown New Egypt Rd) County Bridge # 0363005 North Hanover	Safe, Mobl (D)	LSC	Bridge improvement			Lead: County Assist: municipality	D95097
B027	CR 654 (Stage Rd) Bridges over East and West Branch of Bass River Bass River Twp	Safe, Mobl (D)	LSC	Bridge improvement			Lead: County Assist: municipality	
B028	CR (670) Jacksonville Jobstown Rd Bridge over Branch of Assiscunk Creek Springfield	Safe, Mobl (D)	LSC	Bridge improvement			Lead: County Assist: municipality	
B029	CR 684 (Smithville Rd) Bridge over North Branch Rancocas Creek Easthampton	Safe, Mobl (D)	LSC	Bridge improvement				D9903
B031	US 9 Bridge ½ Mile East of CR 563 Bass River Twp	Safe, Mobl	NJBMS	Bridge Replacement	NJBMS		Lead: State Assist : County	



**INVENTORY OF  
NON-PIPELINE TRANSPORTATION PROBLEMS  
BURLINGTON COUNTY**

<b>ID #</b>	<b>Location</b>	<b>Problems</b>	<b>Source</b>	<b>Improvement Concept</b>	<b>Mgmt Sys</b>	<b>SDRP Center or Distressed</b>	<b>Stakeholders</b>	<b>Status</b>
B032	Upton-Mount Misery Rd Bridge 1 Mile South of NJ 70 Pemberton Twp	Safe, Mobl	NJBMS	Bridge Replacement	NJBMS		Lead: County Assist: Municipality	
B033	Hanover St (CR 616) .2 Miles North of CR 530	Safe, Mobl	NJBMS	Bridge Replacement	NJBMS		Lead: County Assist: Municipality	
B034	Pemberton Road NJ 38 to US 206	Poor Pavement Condition	NJPMS	Resurface	NJPMS		Lead: County Assist: Municipality	
B035	Jacksonville Road US 130 to Springfield Twp	Poor Pavement Condition	NJPMS	Resurface	NJPMS		Lead: County Assist: Municipality	
B036	Stokes Road Medford Twp Line to Trimble St	Poor Pavement Condition	NJPMS	Resurface	NJPMS		Lead: County Assist: Municipality	
B037	Bus Station Burlington City		NJIMS	Focus bus shelters, seating, lighting, and schedules on Broad St at High St	NJIMS		Lead: NJ Transit Assist: County, municipalities	
B038	Bus Station Mount Holly		NJIMS	Install bus signs, shelter, seating, and schedules Washington St at High St	NJIMS		Lead: NJ Transit Assist: County, municipalities	

## KEY

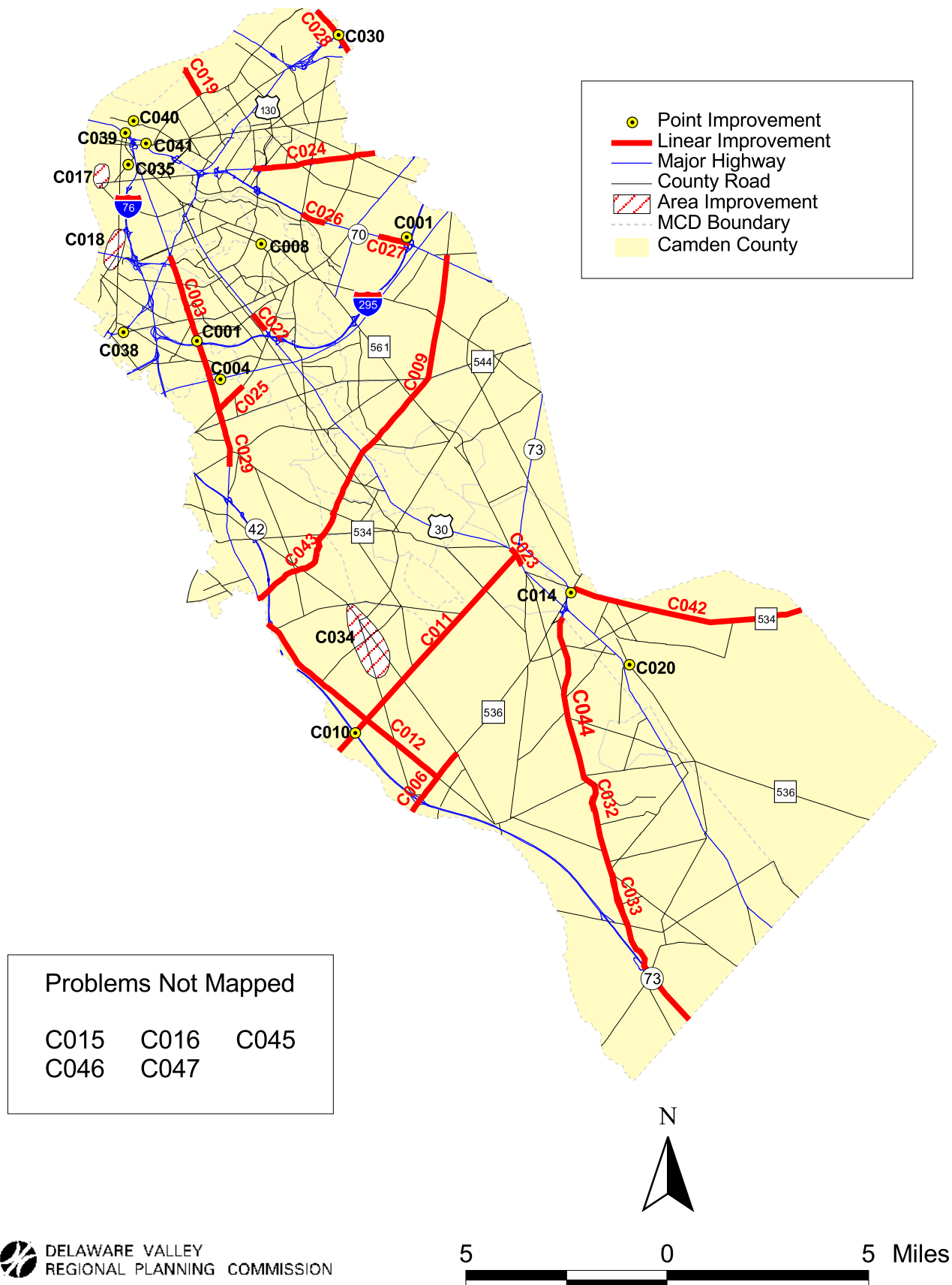
<b>ID #</b>	Internal numbering system relating only to this inventory. If <b>ID#</b> is bold, the project has been identified as high priority and will have a problem statement prepared for it.
<b>Location:</b>	Facilities/Area considered in need of improvement.
<b>Problems:</b>	Cong = Congestion, Mobl = Mobility, AQ = Air Quality, ED = Economic Development, Safe = Safety, <b>(C)</b> = current, <b>(D)</b> = developing, <b>(E)</b> = expected
<b>Source:</b>	Organization which submitted this need for the inventory or the document it was derived from; County = Burlington County, DVRPC LRP = DVRPC Long Range Plan, DVRPC WPS = DVRPC Work Program Study, NJ OSP = New Jersey Office of State Planning, RT 73 Task Force = Cross County Connection TMA Task Force for NJ 73, LSC = Local Scoping Candidate project, TEA-21 = Transportation Equity Act for the 21st Century NJBMS = NJDOT Bridge Management System
<b>Improvement Concept:</b>	Potential improvement identified to address the suggested transportation need.
<b>Management Systems:</b>	<p>CMS = If the facilities in the project location have been identified as congested in DVRPC's Congestion Management System Study and the improvement concept is consistent with the strategies identified as practical for that CMS Subcorridor, then CMS appears in this column.</p> <p>PMS = If the facilities identified in the project location are listed in whole or in part in NJ DOT's Pavement Management Priority list 1996-1997, then PMS appears in this column.</p> <p>IMS = Those project locations which have been identified by the DVRPC Goods Movement Task Force to be included in the regional Intermodal Management System.</p>
<b>SDRP Center or Distressed Municipality</b>	Those project locations which fall within a designated center as identified by the New Jersey State Development and Redevelopment Plan, also those project locations which are within the boundaries of a distressed municipality as listed on the Distressed Municipality List - 1993
<b>Stakeholders:</b>	<p>Lead: That organization which has primary responsibility for the initiation or advancement of improvements to the facilities listed. Typically the owner/operator of the facility. Being designated as the lead agency does not imply a requirement for funding.</p> <p>Assist: Other organizations that have an interest or responsibility in the improvement. This could include participation in funding the improvement.</p>

# **APPENDIX B**

## **CAMDEN COUNTY**



# Inventory of Non-Pipeline Transportation Problems Camden County





**INVENTORY OF  
NON-PIPELINE TRANSPORTATION PROBLEMS  
CAMDEN COUNTY**

<b>ID #</b>	<b>Location</b>	<b>Problems</b>	<b>Source</b>	<b>Improvement Concept</b>	<b>Mgmt Sys</b>	<b>SDRP Center or Distressed</b>	<b>Stakeholders</b>	<b>Status</b>
C001	I-295 Park and Ride Lots at NJ 70 at NJ 168 Bellmawr, Haddon Heights, Mt. Ephraim, Cherry Hill,	Cong, Mobl, AQ (E)	DVRPC LRP	Construct park and ride lots	CMS PMS	Bellmawr - D	Lead: NJ DOT Assist: County, municipalities, NJTransit	
C003	NJ 168 Traffic Flow Improvements CR 544 to US 130	Cong, Safe, AQ (C)	County DVRPC LRP	Provide left turn lanes and interconnect signals	CMS PMS	Audobon Park - D Bellmawr - D	Lead: NJ DOT Assist: County, municipalities	Cap Plan x227
C004	New Jersey Turnpike at Interchange #3 Runnemede, Bellmawr	Cong, Mobl, AQ (D)	DVRPC LRP	Relocate interchange and construct a park and ride lot	CMS	Bellmawr - D	Lead: NJ TPK Assist: NJ DOT, County, municipality	
C006	CR 536 Spur Corridor Improvements CR 706 to Gloucester Co line Winslow Twp	Cong, Mobl, Safe, ED (D)	County DVRPC LRP DVRPC WPS	Widen to 4 lanes, intersection improvements	CMS	Sicklerville	Lead: Counties Assist: NJ DOT, SJTA municipalities, NJTransit	
C008	CR 641 (Park Ave) Bridge Haddon Twp	Safe (C)	County	Bridge replacement			Lead: County Assist: municipality	
C009	CR 673 Improvements NJ 168 to CR 674	Cong, Mobl, Safe, ED (D)	DVRPC WPS	Widening and intersection improvements	CMS		Lead: Counties Assist: NJ DOT municipalities	

**INVENTORY OF  
NON-PIPELINE TRANSPORTATION PROBLEMS  
CAMDEN COUNTY**

<b>ID #</b>	<b>Location</b>	<b>Problems</b>	<b>Source</b>	<b>Improvement Concept</b>	<b>Mgmt Sys</b>	<b>SDRP Center or Distressed</b>	<b>Stakeholders</b>	<b>Status</b>
C010	CR 689 at Atlantic City Expressway Gloucester Twp, Winslow	Mobl, ED, Cong (D)	County DVRPC LRP DVRPC WPS	Construct a new interchange	CMS		Lead: SJTA Assist: County, municipality	
C011	CR 689 Improvements US 30 to Gloucester Co line	Cong, Mobl, Safe, ED (D)	County DVRPC LRP DVRPC WPS	Widening and intersection improvements	CMS	Berlin Boro Berlin Twp	Lead: Counties Assist: NJ DOT municipalities	
C012	CR 705 Corridor Improvements CR 536 Spur to NJ 168 Winslow, Gloucester Twp	Cong, Mobl, Safe, ED (D)	DVRPC WPS	Widening and intersection improvements	CMS	Sicklerville	Lead: Counties Assist: NJ DOT municipalities	
C014	Atco Train Station Improvements Waterford	Mobl, Safe  (E)	County DVRPC WPS	Parking expansion and access improvements	IMS		Lead: NJ Transit Assist: NJ DOT, County, municipalities	
C015	Camden Gloucester Rail Improvement	Cong, Mobl, AQ, ED (E)	County DVRPC LRP NJ OSP	Construct light rail line from Camden City into Gloucester Co.			Lead: NJ Transit Assist: NJ DOT, Counties, municipalities	
C016	Atlantic City Rail Line Pennsauken Twp.	Cong, Mobl, AQ (E)	DVRPC RCC	Construct station with parking			Lead: NJ Transit Assist: County, NJ DOT, municipality	



July 2000

**INVENTORY OF  
NON-PIPELINE TRANSPORTATION PROBLEMS  
CAMDEN COUNTY**

ID #	Location	Problems	Source	Improvement Concept	Mgmt Sys	SDRP Center or Distressed	Stakeholders	Status
C017	Beckett Street Terminal Camden	Mobl, ED, Safe (C)	GMTF	Directional signing on I-676 and trailblazers along Atlantic Ave/2nd St	IMS	Camden -D	Lead: SJPC Assist: NJ DOT, municipality	
C017 (con't)	Beckett Street Terminal Camden			Reconstruct Atlantic Ave through I-676 interchange and restripe	IMS		Lead: SJPC Assist: NJ DOT, municipality	
				Reconstruct rail grade crossing on Atlantic Ave between Broadway and 2nd St	IMS		Lead: SJPC Assist: NJ DOT, municipality	
				Reconstruct 2nd St between Kaighn Ave and Atlantic Ave	IMS		Lead: SJPC Assist: NJ DOT, municipality	
				Reconstruct Front St from Clinton St to Beckett St	IMS		Lead: SJPC Assist: NJ DOT, municipality	
				Widen terminal entrance, relocate security gate and power lines	IMS		Lead: SJPC Assist: NJ DOT, municipality	
				Repair main rail leading into terminal			Lead: SJPC Assist: NJ DOT, municipality	

July 2000

**INVENTORY OF  
NON-PIPELINE TRANSPORTATION PROBLEMS  
CAMDEN COUNTY**

ID #	Location	Problems	Source	Improvement Concept	Mgmt Sys	SDRP Center or Distressed	Stakeholders	Status
C017 (con't)	Beckett Street Terminal Camden			Install rail into J Building			Lead: SJPC Assist: NJ DOT, municipality	
				Install turn-off from rail for Berth 4 going east-west			Lead: SJPC Assist: NJ DOT, municipality	
				Construct barges for the transport of scrap metal			Lead: SJPC Assist: NJ DOT, municipality	

**INVENTORY OF  
NON-PIPELINE TRANSPORTATION PROBLEMS  
CAMDEN COUNTY**

<b>ID #</b>	<b>Location</b>	<b>Problems</b>	<b>Source</b>	<b>Improvement Concept</b>	<b>Mgmt Sys</b>	<b>SDRP Center or Distressed</b>	<b>Stakeholders</b>	<b>Status</b>
C018	Broadway Terminal, Gloucester City Marine and Trans Ocean Maritime Camden, Gloucester City	Mobl, ED, Safe (C)	GMTF	Local street trailblazer signage along King St, Broadway and Morgan Blvd between the terminals and I- 676	IMS	Camden - D Gloucester City-D	Lead: SJPC Assist: NJ DOT, municipality	
				Reconstruct rail grade crossing on Morgan Blvd	IMS		Lead: SJPC Assist: NJ DOT, private operator, municipality	
				Repair rail at main ingress at south end			Lead: SJPC Assist: NJ DOT, private operator, municipality	
				Construct a loop rail track at the Bulson St yard			Lead: SJPC Assist: NJ DOT, private operator, municipality	
C019	Petty's Island Maritime Complex Camden, Pennsauken	Mobl, ED, Safe (C)	County GMTF	Conduct access study between the facility and the surrounding regional highway network.	IMS	Camden - D	Lead: County Assist: municipality, private operator	
C020	CR 716 (Old White Horse Pike) at Burnt Mill Rd Waterford	Mobl, ED, Safe (E)	County	Extension of Burnt Mill Road from CR 716 to US 30 and construction of a new bridge			Lead: NJ DOT Assist: County municipality	
C022	US 30 CR 656 to Grove St Haddon Heights	Cong (C)	NJ CMS	Relieve congestion	CMS		Lead: NJ DOT Assist: County municipality	

July 2000

**INVENTORY OF  
NON-PIPELINE TRANSPORTATION PROBLEMS  
CAMDEN COUNTY**

<b>ID #</b>	<b>Location</b>	<b>Problems</b>	<b>Source</b>	<b>Improvement Concept</b>	<b>Mgmt Sys</b>	<b>SDRP Center or Distressed</b>	<b>Stakeholders</b>	<b>Status</b>
C023	US 30 CR 751 to Eastugh Ave Berlin Boro	Cong (C)	NJ CMS	Relieve congestion	CMS	Berlin Boro	Lead: NJ DOT Assist: County municipality	
C024	NJ 38 CR 616/CR 627 to Burlington County Line Cherry Hill	Cong (C)	NJ CMS	Relieve congestion	CMS		Lead: NJ DOT Assist: County municipality	
C025	NJ 41 NJ 168 to Barrington Line Runnemede	Cong (C)	NJ CMS	Relieve congestion	CMS		Lead: NJ DOT Assist: County municipality	
C026	NJ 70 CR 644 to CR 627 Cherry Hill	Cong (C)	NJ CMS	Relieve congestion	CMS		Lead: NJ DOT Assist: County municipality	S&D 252A
C027	NJ 70 I-295 to West Gate Dr Cherry Hill	Cong (C)	NJ CMS	Relieve congestion	CMS		Lead: NJ DOT Assist: County municipality	S&D 252A
C028	NJ 73 CR 543 to Fork Landing Rd Pennsauken	Cong (C)	NJ CMS	Relieve congestion	CMS		Lead: NJ DOT Assist: County municipality	

**INVENTORY OF  
NON-PIPELINE TRANSPORTATION PROBLEMS  
CAMDEN COUNTY**

<b>ID #</b>	<b>Location</b>	<b>Problems</b>	<b>Source</b>	<b>Improvement Concept</b>	<b>Mgmt Sys</b>	<b>SDRP Center or Distressed</b>	<b>Stakeholders</b>	<b>Status</b>
C029	NJ 168 I-295 to Hilltop Ave Bellmawr, Runnemede, Gloucester	Cong  (C)	NJ CMS	Relieve congestion	CMS	Bellmawr - D	Lead: NJ DOT Assist: County municipality	
C030	NJ 73 at US 130/NJ 90 Pennsauken	Mobl, Cong, ED (C)	RT 73 Task Force	Improve access to and from EXPO Center	CMS		Lead: NJ DOT Assist: County municipality	
C032	NJ 73 CR 536 to Davis Ave Winslow	Safe, Mobl, (C)	RT 73 Task Force	Address "S" curve			Lead: NJ DOT Assist: County municipality	
C033	NJ 73 CR 561 to CR 723 Winslow	Safe (C)	RT 73 Task Force	Inadequate lighting			Lead: NJ DOT Assist: County municipality	
C034	Erial Area Improvements CR 687, CR 703, CR 704, CR 706 Gloucester Twp	Cong, Mobl, (D)	LSC	Intersection and traffic flow improvements			Lead: County Assist: municipality	
C035	CR 604 (Newton Av) at 7th St, Pine St, Line St Camden	Safe (D)	LSC	Intersection and traffic flow improvements		Camden - D	Lead: County Assist: municipality	
C038	Brooklawn Circle	Congestion (C)	County	Improve traffic flow at the intersection of Creek Road and NJ 47		Camden	Lead: NJDOT	

July 2000

**INVENTORY OF  
NON-PIPELINE TRANSPORTATION PROBLEMS  
CAMDEN COUNTY**

<b>ID #</b>	<b>Location</b>	<b>Problems</b>	<b>Source</b>	<b>Improvement Concept</b>	<b>Mgmt Sys</b>	<b>SDRP Center or Distressed</b>	<b>Stakeholders</b>	<b>Status</b>
C039	Broadway (CR 551) Bridge 1/4 Mile North of I-676 Camden City	Safety, Mobil	NJBMS	Replace Bridge	NJBMS		Lead: County Assist: Municipalities	
C040	State Street Bridge 1 Mile East of Ben Franklin Bridge Camden City	Safety, Mobil	NJBMS	Replace Bridge	NJBMS		Lead: County Assist: Municipalities	
C041	Federal Street Bridge 1.5 Miles of Ben Franklin Bridge Camden City	Safety, Mobil	NJBMS	Replace Bridge	NJBMS		Lead: County Assist: Municipalities	
C042	Jackson Road (CO 534) Waterford Twp to Camden County Line Waterford Twp	Poor Pavement	NJPMS	Resurface Segment	NJPMS		Lead: County Assist: Municipalities	
C043	Laurel Road (CO 637) CO 706 to Lindenwold Boro	Poor Pavement	NJPMS	Resurface Segment	NJPMS		Lead: County Assist: Municipalities	
CO44	Cedarbrook Road Atlantic County Line to 3.7 Miles Past Atlantic County Line	Poor Pavement	NJPMS	Resurface Segment	NJPMS		Lead: County Assist: Municipalities	
C045	Ferry Avenue Station		NJIMS	Install Trailblazers on connector routes.	NJIMS		Lead: NJ Transit Assist: NJ DOT, Counties, municipalities	

July 2000

**INVENTORY OF  
NON-PIPELINE TRANSPORTATION PROBLEMS  
CAMDEN COUNTY**

<b>ID #</b>	<b>Location</b>	<b>Problems</b>	<b>Source</b>	<b>Improvement Concept</b>	<b>Mgmt Sys</b>	<b>SDRP Center or Distressed</b>	<b>Stakeholders</b>	<b>Status</b>
C046	Haddonfield Station		NJIMS	Install Trailblazers on connector routes.	NJIMS		Lead: NJ Transit Assist: NJ DOT, Counties, municipalities	
C047	Westmont Station		NJIMS	Install Trailblazers on connector routes.	NJIMS		Lead: NJ Transit Assist: NJ DOT, Counties, municipalities	

## KEY

<b>ID #</b>	Internal numbering system relating only to this inventory. If <b>ID#</b> is bold, the project has been identified as high priority and will have a problem statement prepared for it.
<b>Location:</b>	Facilities/Area considered in need of improvement.
<b>Problems:</b>	Cong = Congestion, Mobl = Mobility, AQ = Air Quality, ED = Economic Development, Safe = Safety, <b>(C)</b> = current, <b>(D)</b> = developing, <b>(E)</b> = expected
<b>Source:</b>	Organization which submitted this need for the inventory or the document it was derived from; County = Camden County, DVRPC LRP = DVRPC Long Range Plan, DVRPC WPS = DVRPC Work Program Study, GMTF = DVRPC Goods Movement Task Force, DVRPC RCC = DVRPC Regional Citizens Committee, NJ OSP = New Jersey Office of State Planning, NJ CMS = New Jersey Congestion Management System, RT 73 Task Force = Cross County Connection TMA Task Force for NJ 73, LSC = Local Scoping Candidate project, TEA-21 = Transportation Equity Act for the 21st Century
<b>Improvement Concept:</b>	Potential improvement identified to address the suggested transportation need.
<b>Management Systems:</b>	<p>CMS = If the facilities in the project location have been identified as congested in DVRPC's Congestion Management System Study and the improvement concept is consistent with the strategies identified as practical for that CMS Subcorridor, then CMS appears in this column.</p> <p>PMS = If the facilities identified in the project location are listed in whole or in part in NJ DOT's Pavement Management Priority list 1996-1997, then PMS appears in this column.</p> <p>IMS = Those project locations which have been identified by the DVRPC Goods Movement Task Force to be included in the regional Intermodal Management System.</p>
<b>SDRP Center or Distressed Municipality</b>	Those project locations which fall within a designated center as identified by the New Jersey State Development and Redevelopment Plan, also those project locations which are within the boundaries of a distressed municipality as listed on the Distressed Municipality List - 1993
<b>Stakeholders:</b>	<p>Lead: That organization which has primary responsibility for the initiation or advancement of improvements to the facilities listed. Typically the owner/operator of the facility. Being designated as the lead agency does not imply a requirement for funding.</p> <p>Assist: Other organizations that have an interest or responsibility in the improvement. This could include participation in funding the improvement.</p>

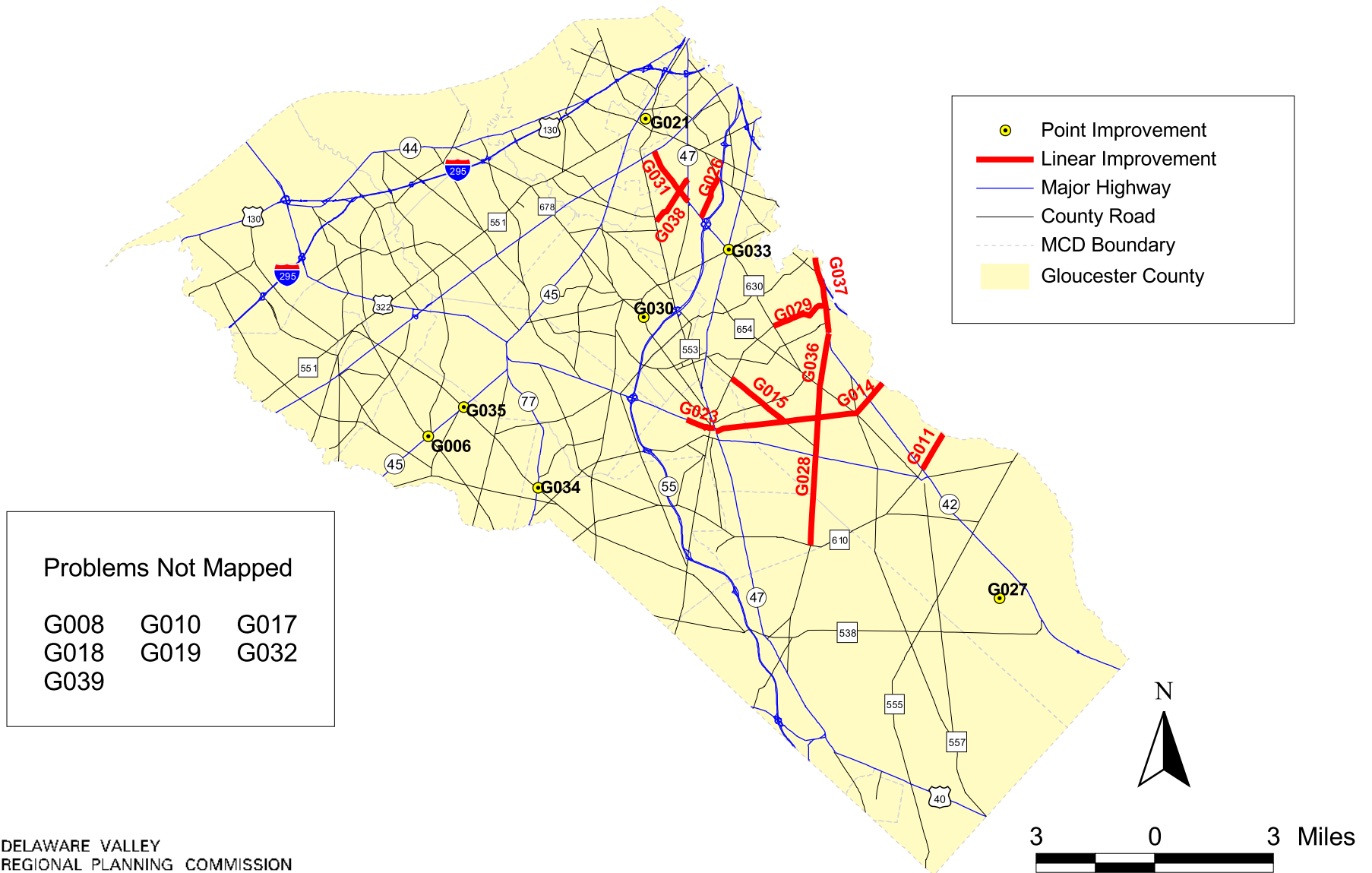


**APPENDIX C**

**GLOUCESTER COUNTY**



# Inventory of Non-Pipeline Transportation Problems: Gloucester County





<b>INVENTORY OF NON-PIPELINE TRANSPORTATION PROBLEMS GLOUCESTER COUNTY</b>								
ID #	Location	Problems	Source	Improvement Concept	Mgmt Sys	SDRP Center or Distressed	Stakeholders	Status
G006	NJ 45 At CR 694 South Harrison	Safe, Cong (E)	County	Signal and intersection improvements	PMS		Lead: NJ DOT Assist: County, municipalities	
G008	NJ 55 Corridor Park and Ride Program	Mobl, Cong (D)	County	Construct Transit park and ride lots	CMS	Deptford Glassboro - D Elk - D	Lead: NJ Transit Assist: County, municipalities	
G010	NJ Turnpike Between Interchange #2 and Interchange #3	Cong, Mobl, AQ (D)	County	Construct a new interchange	CMS		Lead: NJ TPK Assist: NJ DOT, County, municipality,	
G011	CR 536 Spur Corridor Improvements NJ 42 to Camden Co line Monroe Twp	Cong, Mobl, Safe, ED (D)	County DVRPC LRP DVRPC WPS	Roadway widening and intersection improvements	CMS	Williamstown	Lead: Counties Assist: NJ DOT, municipalities, NJTransit	
G014	CR 689 Improvements NJ 47 to Camden Co line	Cong, Mobl, Safe, ED (D)	County DVRPC LRP DVRPC WPS	Widening and intersection improvements	CMS	Glassboro - D	Lead: Counties Assist: NJ DOT municipalities	
G015	CR 658 CR 689 to CR 651 Washington	Cong, Mobl, Safe, ED (D)	DVRPC WPS	Widening and intersection improvements			Lead: Counties Assist: NJ DOT municipalities	
G016	Camden Gloucester Rail Improvement	Cong, Mobl, AQ, ED (E)	County DVRPC LRP NJ OSP	Construct light rail line from Camden City into Gloucester Co.			Lead: NJ Transit Assist: Counties, NJ DOT, municipalities	

**INVENTORY OF  
NON-PIPELINE TRANSPORTATION PROBLEMS  
GLOUCESTER COUNTY**

<b>ID #</b>	<b>Location</b>	<b>Problems</b>	<b>Source</b>	<b>Improvement Concept</b>	<b>Mgmt Sys</b>	<b>SDRP Center or Distressed</b>	<b>Stakeholders</b>	<b>Status</b>
G017	Bicycle Facilities Deptford Twp area	Mobl, Safe, AQ (D)	NJ OSP	Construct on and off road bicycle facilities		Deptford	Lead: Municipality Assist: County, NJ DOT	
G018	Bridge over Raccoon Creek Woolwich Township	Mobl, ED, Cong (E)	NJ OSP	Construct a new bridge over the Raccoon Creek in the proposed Center Square/ Swedesboro regional center			Lead: NJ DOT Assist: County municipality	Cap Plan L155
G019	Center Square/Swedesboro TMA Logan, Swedesboro, Woolwich	Cong, Mobl, AQ, ED, Safe	NJ OSP	Create a Transportation Management Association for the proposed Center Square/Swedesboro regional center		Swedesboro - D	Lead: County Assist: NJ DOT municipality	
G021	Woodbury Park and Ride / Transportation Center Woodbury	Mobl, Cong (D)	County	Construct transit center / park and ride		Woodbury - D	Lead: NJ Transit Assist: County, municipality	
G022	Ferry Service Facility at Red Bank National Park	Mobl, Cong (D)	County	Provide ferry service from Red Bank/ National Park to Kvaerner Shipyard and SEPTA		National Park - D	Lead: NJ DOT Assist: County, municipality	
G023	US 322 NJ 47 (north) to Conrail Tracks Glassboro	Cong (C)	NJ CMS	Relieve congestion	CMS	Glassboro - D	Lead: NJ DOT Assist: County municipality	S&D 98534

**INVENTORY OF  
NON-PIPELINE TRANSPORTATION PROBLEMS  
GLOUCESTER COUNTY**

<b>ID #</b>	<b>Location</b>	<b>Problems</b>	<b>Source</b>	<b>Improvement Concept</b>	<b>Mgmt Sys</b>	<b>SDRP Center or Distressed</b>	<b>Stakeholders</b>	<b>Status</b>
G026	CR 647 (Fox Run Rd) NJ 47 to CR 534 Deptford	Safe (C)	LSC	Reconstruction			Lead: County Assist: municipality	
G027	Whitehall Rd Bridge at Victory Lake Dam Monroe	Safe, Mobl (D)	LSC	Bridge improvement			Lead: County Assist: municipality	
G028	CR 655 (Fries Mill Rd) NJ 42 to CR 610 Washington, Monroe, Clayton	Cong, Mobl (D)	LSC	Traffic flow improvements		Clayton - D	Lead: County Assist: NJ DOT municipality	
G029	CR 651 (Greentree Rd) NJ 42 to CR 630 Washington	Cong, Mobl (C)	LSC	Traffic flow improvements	CMS		Lead: County Assist: municipality	
G030	CR 553 Alt. (Main St) Bridge over Chestnut Branch Mantua	Safe, Mobl (C)	LSC	Bridge improvement			Lead: County Assist: municipality	
G031	CR 663 (Egg Harbor Rd) NJ Turnpike to NJ 47 Deptford	Safe, Mobl (C)	LSC	Traffic flow improvements	CMS	Deptford	Lead: County Assist: municipality	
G032	Bicycle Trails West Deptford	Mobl (D)	TEA-21	Construct bicycle trails and riverside improvements			Lead: Assist:	

**INVENTORY OF  
NON-PIPELINE TRANSPORTATION PROBLEMS  
GLOUCESTER COUNTY**

<b>ID #</b>	<b>Location</b>	<b>Problems</b>	<b>Source</b>	<b>Improvement Concept</b>	<b>Mgmt Sys</b>	<b>SDRP Center or Distressed</b>	<b>Stakeholders</b>	<b>Status</b>
G033	Locke Ave (CR 671) Bridge Swedesboro Boro	Safety and Mobility	NJBMS	Replace Bridge	NJBMS		Lead: County Assist: municipality	
G034	Wilson Road Bridge .4 Mile North of A.C. Expressway Washington Twp	Safety and Mobility	NJBMS	Replace Bridge	NJBMS		Lead: County Assist: municipality	
G035	Tomlin Station Road Bridge .8 Mile N of US 130 and .7 Mile E of NJ 44 Greenwick Twp	Safety and Mobility	NJBMS	Replace Bridge	NJBMS		Lead: County Assist: municipality	
G036	Almonesson Rd CO 621 to NJ 47	Poor Pavement	NJPMS	Resurface	NJPMS		Lead: County Assist: municipality	
G037	Glassboro Rd Co 624 to Monongahela Creek	Poor Pavement	NJPMS	Resurface	NJPMS		Lead: County Assist: municipality	
G038	Cattell Road NJ 47 to CO 553	Poor Pavement	NJPMS	Resurface	NJPMS		Lead: County Assist: municipality	
G039	Glassboro Bus Station		NJIMS	Install bus sign, shelter, seating, lighting, and schedules at bus stop on Main Street	NJIMS		Lead: NJ Transit Assist: County, municipality	



## KEY

<b>ID #</b>	Internal numbering system relating only to this inventory. If <b>ID#</b> is bold, the project has been identified as high priority and will have a problem statement prepared for it.
<b>Location:</b>	Facilities/Area considered in need of improvement.
<b>Problems:</b>	Cong = Congestion, Mobil = Mobility, AQ = Air Quality, ED = Economic Development, Safe = Safety, <b>(C)</b> = current, <b>(D)</b> = developing, <b>(E)</b> = expected
<b>Source:</b>	Organization which submitted this need for the inventory or the document it was derived from; County = Gloucester County, DVRPC LRP = DVRPC Long Range Plan, DVRPC WPS = DVRPC Work Program Study, NJ OSP = NJ Office of State Planning, NJ CMS = New Jersey Congestion Management System, LSC = Local Scoping Candidate project, TEA-21 = Transportation Equity Act for the 21st Century
<b>Improvement Concept:</b>	Potential improvement identified to address the suggested transportation need.
<b>Management Systems:</b>	<p>CMS = If the facilities in the project location have been identified as congested in DVRPC's Congestion Management System Study and the improvement concept is consistent with the strategies identified as practical for that CMS Subcorridor, then CMS appears in this column.</p> <p>PMS = If the facilities identified in the project location are listed in whole or in part in NJ DOT's Pavement Management Priority list 1996-1997, then PMS appears in this column.</p> <p>IMS = Those project locations which have been identified by the DVRPC Goods Movement Task Force to be included in the regional Intermodal Management System.</p>
<b>SDRP Center or Distressed Municipality</b>	Those project locations which fall within a designated center as identified by the New Jersey State Development and Redevelopment Plan, also those project locations which are within the boundaries of a distressed municipality as listed on the Distressed Municipality List - 1993
<b>Stakeholders:</b>	<p>Lead: That organization which has primary responsibility for the initiation or advancement of improvements to the facilities listed. Typically the owner/operator of the facility. Being designated as the lead agency does not imply a requirement for funding.</p> <p>Assist: Other organizations that have an interest or responsibility in the improvement. This could include participation in funding the improvement.</p>

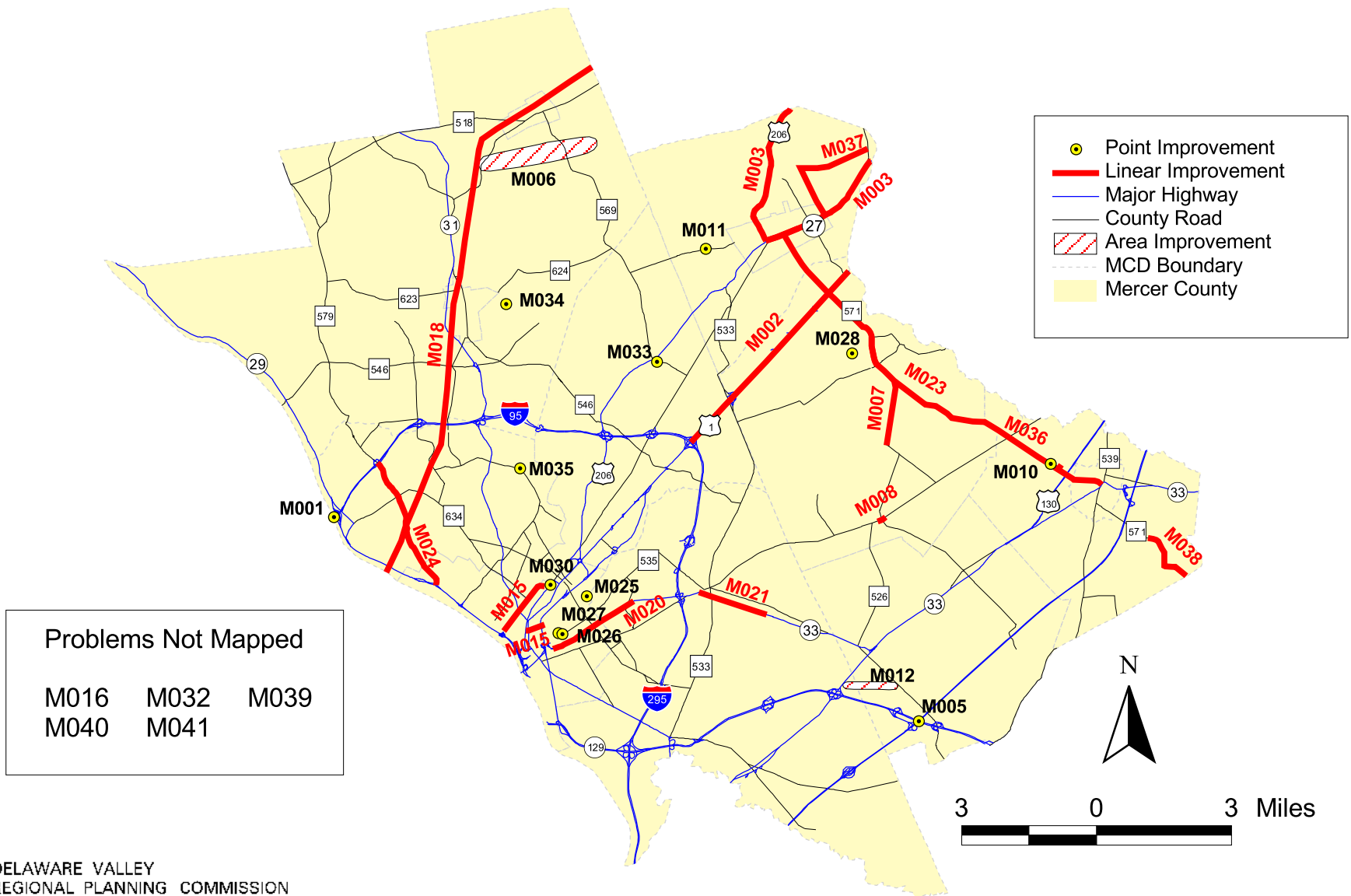


**APPENDIX D**

**MERCER COUNTY**



# Inventory of Non-Pipeline Transportation Problems: Mercer County





**INVENTORY OF  
NON-PIPELINE TRANSPORTATION PROBLEMS  
MERCER COUNTY**

ID #	Location	Problems	Source	Improvement Concept	Mgmt Sys	SDRP Center or Distressed	Stakeholders	Status
M001	I-95 Scudders Falls Bridge Ewing	Cong (C)	County	Reconfigure Bridge to accommodate I-95	CMS		Lead: NJ DOT Assist: County, municipalities	
M002	US 1 I-295 to County Line Lawrence, West Windsor	Mobl, Safe (C)	TMA	Signage improvements		Province Line Rd Rt 1 West Windsor	Lead: NJ DOT Assist: County, municipalities	
M003	US 206/NJ 27 Corridors Princeton Area	Cong, Mobl, Safe, AQ, ED (C)	TMA	Areawide traffic improvements	PMS	Princeton	Lead: NJ DOT Assist: County, municipalities	
M005	NJ Turnpike Park and Ride Lot at I-195 Washington	Cong, Mobl, AQ (D)	DVRPC LRP	Construct park and ride lots	CMS		Lead: NJ TPK Assist: NJ DOT, County, municipalities	
M006	CR 518 Hopewell	Mobl, Cong, AQ (D)	NJ OSP	Construct a bypass south of the borough		Hopewell	Lead: County Assist: NJ DOT, Municipalities	
M007	CR 526 West Windsor	Mobl, Safe (D)	TMA	Construct bike route along roadway			Lead: County Assist: Municipality	
M008	CR 535 - Old Trenton Rd Village of Edinburg West Windsor	Cong (D)	County	Widen, improve turning movements		Edinburg	Lead: County Assist: NJ DOT, Municipality	
M010	CR 571/One Mile Road East Windsor	Safe, Mobl (C)	TMA	Pedestrian improvements/sidewalks			Lead: County Assist: NJ DOT, Municipality	

**INVENTORY OF  
NON-PIPELINE TRANSPORTATION PROBLEMS  
MERCER COUNTY**

<b>ID #</b>	<b>Location</b>	<b>Problems</b>	<b>Source</b>	<b>Improvement Concept</b>	<b>Mgmt Sys</b>	<b>SDRP Center or Distressed</b>	<b>Stakeholders</b>	<b>Status</b>
M011	CR 604 - Rosedale Rd Bridge over Stony Brook Princeton Twp	Mobl, Safe (D)	County	Relpace 2 lane bridge	CMS		Lead: County Assist: NJ DOT, Municipality	
M012	CR 619 (Kuser Road) Extension US 130 to CR 526 Hamilton, Washington	Cong, Mobil (E)	DVRPC LRP	Construct new roadway			Lead: County Assist: NJ DOT, municipalities	
M015	Calhoun St, N. Willow St, Perry St, Carroll St City of Trenton	Mobl, Safe (C)	TMA	Pedestrian improvements		Trenton - D	Lead: City of Trenton Assist: County	
M016	Pedestrian/bicycle Trail Washington	Mobl, Safe (E)	NJ OSP	Construct a pedestrian/bicycle facility along the Camden Amboy Branch rail line		Robbinsville	Lead: Municipality Assist: County, NJ DOT	
M018	West Trenton Rail Line Ewing, Hopewell, Pennington	Mobl, Cong, AQ (D)	DVRPC RCC NJ OSP	Reactivate New York-bound passenger rail service		Hopewell Pennington	Lead: NJ Transit Assist: NJ DOT Counties, Municipalities	
M019	NJ 27 US 206 to Pine St Princeton	Cong (C)	NJ CMS	Relieve congestion	CMS	Princeton	Lead: NJ DOT Assist: County, Municipality	
M020	NJ 33 CR 614 to S. Clinton Ave Trenton	Cong (C)	NJ CMS	Relieve congestion	CMS	Trenton - D	Lead: NJ DOT Assist: County, Municipality	



**INVENTORY OF  
NON-PIPELINE TRANSPORTATION PROBLEMS  
MERCER COUNTY**

<b>ID #</b>	<b>Location</b>	<b>Problems</b>	<b>Source</b>	<b>Improvement Concept</b>	<b>Mgmt Sys</b>	<b>SDRP Center or Distressed</b>	<b>Stakeholders</b>	<b>Status</b>
M021	NJ 33 CR 535 to White Horse Hamilton Square Rd Hamilton	Cong  (C)	NJ CMS	Relieve congestion			Lead: NJ DOT Assist: County, Municipality	
M023	CR 571 NJ 27 to NJ 33 Princeton Boro, Princeton Twp, West Windsor, East Windsor	Cong  (C)	NJ CMS	Relieve congestion	CMS	Princeton	Lead: County Assist: NJ DOT, Municipality	
M024	CR 579 I-95 to NJ 29 Trenton, Ewing	Cong  (C)	NJ CMS	Relieve congestion		Trenton - D	Lead: County Assist: NJ DOT, Municipality	
M025	Nottingham Way Mulberry St to Clinton Ave Trenton	Cong, Mobl, Safe (C)	LSC	Traffic flow and intersection improvements	CMS	Trenton - D	Lead: County Assist: Municipality	
M026	CR 635 (East State St) Bridge over Amtrak Trenton	Safe, Mobl (D)	LSC	Bridge improvements		Trenton - D	Lead: County Assist: Amtrak Municipality	
M027	Wall St Bridge over Assunpink Ck Trenton	Safe, Mobl (D)	LSC	Bridge improvements		Trenton - D	Lead: County Assist: Municipality	

**INVENTORY OF  
NON-PIPELINE TRANSPORTATION PROBLEMS  
MERCER COUNTY**

<b>ID #</b>	<b>Location</b>	<b>Problems</b>	<b>Source</b>	<b>Improvement Concept</b>	<b>Mgmt Sys</b>	<b>SDRP Center or Distressed</b>	<b>Stakeholders</b>	<b>Status</b>
M028	Alexander Rd, North Post Rd and Princeton Junction West Windsor	Mobl, Cong (C)	LSC	Traffic flow and intersection improvements	CMS		Lead: County Assist: NJ Transit Municipality	
M030	CR 583 (Princeton Ave) at CR 653 (Calhoun St) Trenton	Cong, Mobl, Safe (C)	LSC	Intersection improvements		Trenton - D	Lead: County Assist: Municipality	
M032	Bear Brook Pathway System East Windsor	Mobl (D)	TEA-21	Construct pathway system			Lead: Assist:	S&D 98536
M033	Fackler Road (CO 569) Bridge Lawrence Twp	Safe, Mobl	NJBMS	Replace Bridge	NJBMS		Lead: County Assist: Municipality	
M034	Old Mill Road Bridge Hopewell Twp	Safe, Mobl	NJBMS	Replace Bridge	NJBMS		Lead: County Assist: Municipality	
M035	Ewingville Road Bridge Ewing Twp	Safe, Mobl	NJBMS	Replace Bridge	NJBMS		Lead: County Assist: Municipality	
M036	Hightstown Road (CO 571) Stockton St to Stockton St	Poor Pavement	NJPMS	Resurface	NJPMS		Lead: County Assist: Municipality	
M037	Snowden Ln Nassau St to Herrontown Rd	Poor Pavement	NJPMS	Resurface	NJPMS		Lead: County Assist: Municipality	

July 2000

<b>INVENTORY OF NON-PIPELINE TRANSPORTATION PROBLEMS MERCER COUNTY</b>								
<b>ID #</b>	<b>Location</b>	<b>Problems</b>	<b>Source</b>	<b>Improvement Concept</b>	<b>Mgmt Sys</b>	<b>SDRP Center or Distressed</b>	<b>Stakeholders</b>	<b>Status</b>
M038	Etra Road Monmouth County Line to Etra Lake	Poor Pavement	NJPMS	Resurface	NJPMS		Lead: County Assist: Municipality	
M039	Princeton Station		NJIMS	Add Pedestrian Trailblazers	NJIMS		Assist: NJ Transit Municipality	
M040	West Trenton Station		NJIMS	Provide Bike Lane along Grant Ave	NJIMS		Assist: NJ Transit Municipality	
M041	Quakerbridge Mall		NJIMS	Create a formal park-and-ride lot with amenities & trailblazer signs to integrate fixed route bus and shuttle bus services, and private vehicle needs.	NJIMS		Assist: NJ Transit Municipality	

## KEY

<b>ID #</b>	Internal numbering system relating only to this inventory. If <b>ID#</b> is bold, the project has been identified as high priority and will have a problem statement prepared for it.
<b>Location:</b>	Facilities/Area considered in need of improvement.
<b>Problems:</b>	Cong = Congestion, Mobl = Mobility, AQ = Air Quality, ED = Economic Development, Safe = Safety, <b>(C)</b> = current, <b>(D)</b> = developing, <b>(E)</b> = expected
<b>Source:</b>	Organization which submitted this need for the inventory or the document it was derived from; County = Mercer County, LRP = DVRPC Long Range Plan, DVRPC RCC = DVRPC Regional Citizens Commottee, NJ OSP = NJ Office of State Planning, TMA = Greater Mercer TMA, NJ CMS = New Jersey Congestion Management System, LSC = Local Scoping Candidate project, TEA-21 = Transportation Equity Act for the 21st Century
<b>Improvement Concept:</b>	Potential improvement identified to address the suggested transportation need.
<b>Management Systems:</b>	<p>CMS = If the facilities in the project location have been identified as congested in DVRPC's Congestion Management System Study and the improvement concept is consistent with the strategies identified as practical for that CMS Subcorridor, then CMS appears in this column.</p> <p>PMS = If the facilities identified in the project location are listed in whole or in part in NJ DOT's Pavement Management Priority list 1996-1997, then PMS appears in this column.</p> <p>IMS = Those project locations which have been identified by the DVRPC Goods Movement Task Force to be included in the regional Intermodal Management System.</p>
<b>SDRP Center or Distressed Municipality</b>	Those project locations which fall within a designated center as identified by the New Jersey State Development and Redevelopment Plan, also those project locations which are within the boundaries of a distressed municipality as listed on the Distressed Municipality List - 1993
<b>Stakeholders:</b>	<p>Lead: That organization which has primary responsibility for the initiation or advancement of improvements to the facilities listed. Typically the owner/operator of the facility. Being designated as the lead agency does not imply a requirement for funding.</p> <p>Assist: Other organizations that have an interest or responsibility in the improvement. This could include participation in funding the improvement.</p>

# **APPENDIX E**



# New Jersey Department of Transportation

## Transportation Problem Statement

*The following information is to be completed by the Bureau of Capital Program Development:*

DB Number \_\_\_\_\_

Legislative District \_\_\_\_\_

Congressional District \_\_\_\_\_

CIS Text and CIS No. \_\_\_\_\_

Program Category \_\_\_\_\_

Information contained on this form has been verified by \_\_\_\_\_

**LOCATION** (To be completed by initiator)

Route (if applicable):

Mileposts (if applicable):

Structure number (if applicable):

Limits:

County(s):

Municipality(s):

**DESCRIPTION OF PROBLEM** (to be completed by initiator)

**NOTE: Please attach related correspondence, map of the area, and other appropriate support material.**

Check those items that best describe the problem:

**Existing Highway**

- \_\_\_\_\_ Capacity problem
- \_\_\_\_\_ Operational problem
- \_\_\_\_\_ Physical condition problem
- \_\_\_\_\_ Safety problem
- \_\_\_\_\_ Other (specify)

**Existing Bridge**

- \_\_\_\_\_ Capacity problem
- \_\_\_\_\_ Physical condition problem
- \_\_\_\_\_ Safety problem

**Corridor/area Capacity Problem**

- \_\_\_\_\_ Need for corridor study
- \_\_\_\_\_ Possible highway on new alignment
- \_\_\_\_\_ Possible new transit line
- \_\_\_\_\_ Need for park and ride development

**DESCRIBE THE PROBLEM:**

**If this problem is actively supported by an outside group, please identify:**

**Other comments (if any) by initiator:**

**Initiator** (Please print or type):



Division: \_\_\_\_\_

Date of Initiation: \_\_\_\_\_

Signature \_\_\_\_\_

Concurrence by Division Director (Signature) \_\_\_\_\_

Date of Concurrence \_\_\_\_\_

***The following information is to be completed by the Bureau of Capital Program Development:***

Date Received by Capital Program Development \_\_\_\_\_

Date presented to Capital Program Committee \_\_\_\_\_

D i s p o s i t i o n

Initiator notified of disposition \_\_\_\_\_

Lead Unit notified of disposition (if applicable)

## **Attachment 1**

### Information required on Transportation Problem Statements

- C Concise statement of need
- C Proposed concept and/or scope of work of a capital improvement project to address the identified need where appropriate
- C Statement of the extent to which the proposed capital improvement project or removal of the identified deficiency would advance the Department's objectives as identified in the Capital Investment Strategy.
- C Current traffic counts and accident rates, with respect to the following program categories: Bridge Rehabilitation and Replacement, Highway Rehabilitation and Reconstruction, Safety Intersection Improvements.
- C Identification of individuals or groups who may be sponsoring or supporting the proposed project.
- C Summary of identified environmental issues within the probable footprint of the proposed project, especially including the identification of any historic or potentially historic properties, historic or potentially historic structures, historic districts, and wetlands.
- C To assure proper quality control, all Transportation Problem Statements are required to be signed by a division director.

NOTE: In the case of a Transportation Problem Statement originating from outside the Department, the Bureau of Capital Program Development may request the Department unit which transmitted the problem statement, and/or any other appropriate unit within the Department, to complete the necessary information.

The Bureau of Capital Program Development may return a Transportation Problem Statement to the initiator with a request to complete missing or inadequate items of information.

The Bureau of Capital Program Development may request the Division of Design Services to undertake an environmental screening to identify pertinent environmental issues involving Transportation Problem Statements, as appropriate.

---

## **Title of Report**

PLANNING BEYOND THE PIPELINE  
IDENTIFYING THE TRANSPORTATION NEEDS  
IN THE NEW JERSEY COUNTIES

**Publication No.:** 00024

**Date Published:** September 2000

**Geographic Area Covered:** Burlington County, Camden County, Gloucester County, and Mercer County

### **Key Words:**

Congestion Management System, Pavement Management System, Bridge Management System, Long Range Plan, Problem Statement, V/C Ratio, Inventory, Condition Ratings, Sufficiency Rating

## **ABSTRACT**

This report describes the methodology used to identify transportation needs of the four county New Jersey portion of the region which are not yet being addressed in the New Jersey Project Development Process. The methodology used data from a wide variety of sources, including the Long Range Plan, the DVRPC Work Program, NJDOT's Congestion Management System, Pavement Management System and Bridge Management System. The management systems will be used as a base from which problem areas will be identified from. The other sources will then be used to supplement the inventory by adding other problem areas that were not identified by the management systems. The report contains a set of tables that list the identified problem areas for each county.

---

Delaware Valley Regional Planning Commission  
8<sup>th</sup> Floor — The Bourse Building  
111 South Independence Mall East  
Philadelphia, PA 19106-2582

Phone: 215-592-1800  
Fax: 215-592-9125  
Internet: [www.dvrpc.org](http://www.dvrpc.org)

Staff contact: John Coscia Jr

Direct phone: (215) 238-2859

E-mail: [jcosciajr@dvrpc.org](mailto:jcosciajr@dvrpc.org)

