

Welcome!

- We'll start as close to 2 PM as possible.
- Everyone is joining as an “attendee” in Zoom’s webinar format.
- As we go, please type your questions into the Q&A tool
- Type in the chat box when we ask poll/survey questions
- Please note that this session is being recorded so that we can post a version of the presentation on the project webpage



Downingtown Area Transportation Study



Fall 2020- Public Meetings
October 13 & 21, 2020
Virtual Meeting

Agenda

- Introduction (Alison Hastings, DVRPC)
- Welcome from Chester County (Commissioner Josh Maxwell)
- Overview of 2-year mobility study (Sarah Moran, DVRPC)
- End of Year One – Existing Conditions (Camden Palvino, DVRPC)
- Remaining Question & Answers
- Thanks & Next Steps (Sarah Moran, DVRPC)

Introduction & Ground Rules

- Purposes of this meeting:
 - Get feedback from community members early in the planning process
- Please enter questions in the Q&A tool as we move through the presentations; we'll pause at various parts to answer questions
- Use the chat box for comments or to respond to different questions we may ask
- Organizers will not address off-topic questions and comments and may combine similar questions
- Organizers reserve the right to ignore and strike from the materials offensive or inappropriate questions and comments
- Organizers may remove an attendee if being disruptive, antagonistic, or threatening

Poll #1

Welcome - Chester County
Commissioner Josh Maxwell

Study Purpose

- Quantify traffic impact of transportation projects and developments in the Downtown area.
- Develop strategies to manage congestion and increase mobility at study intersections and throughout the project study area.
- Provide a platform for the public to have a role in shaping these strategies and the future transportation outlook in the study area.



Project Overview

US 322, West Bradford Township

The DVRPC

- Metropolitan Planning Organization (MPO)
- 9 counties
- 2 states
- 5.7 million people
- 7th largest metro area population in the nation
- 350+ municipalities
- TIP, LRP, and Work Program activities



Project Team

Chester County Planning Commission (CCPC)

- Brian Styche, Environment and Infrastructure Director
- Brian Donovan, Transportation Planner

Delaware Valley Regional Planning Commission (DVRPC)

- Sarah Moran, Manager, Mobility Analysis and Design
- Camden Palvino, Transportation Engineer
- Aaron Faint, Senior Transportation Planner
- Sean Lawrence, Senior GIS Analyst
- Reuben MacMartin, Transportation Planner
- Kelsey McElduff, Transportation Engineer

Stakeholders

- Downingtown Borough
- East Brandywine Township
- Caln Township
- West Bradford Township
- East Bradford Township
- West Whiteland Township
- Uwchlan Township
- East Caln Township
- PennDOT 6-0 and US 30 ITS Project Consultants
- PennDOT Central Office
- SEPTA, Strategic Planning and Service Planning
- TMAcc
- Krapf Bus

Study Goal and Objectives

Goal

This study is intended to provide analysis to support further study, capital project development, and funding.

Objectives

- Identify and quantify areas of existing and future transportation bottlenecks within the Downtown area of southwest Chester County;
- Quantify the impact of new development on traffic circulation and mobility;
- Develop the analytical basis for improvements needed to establish a modern transportation system.

Poll #2

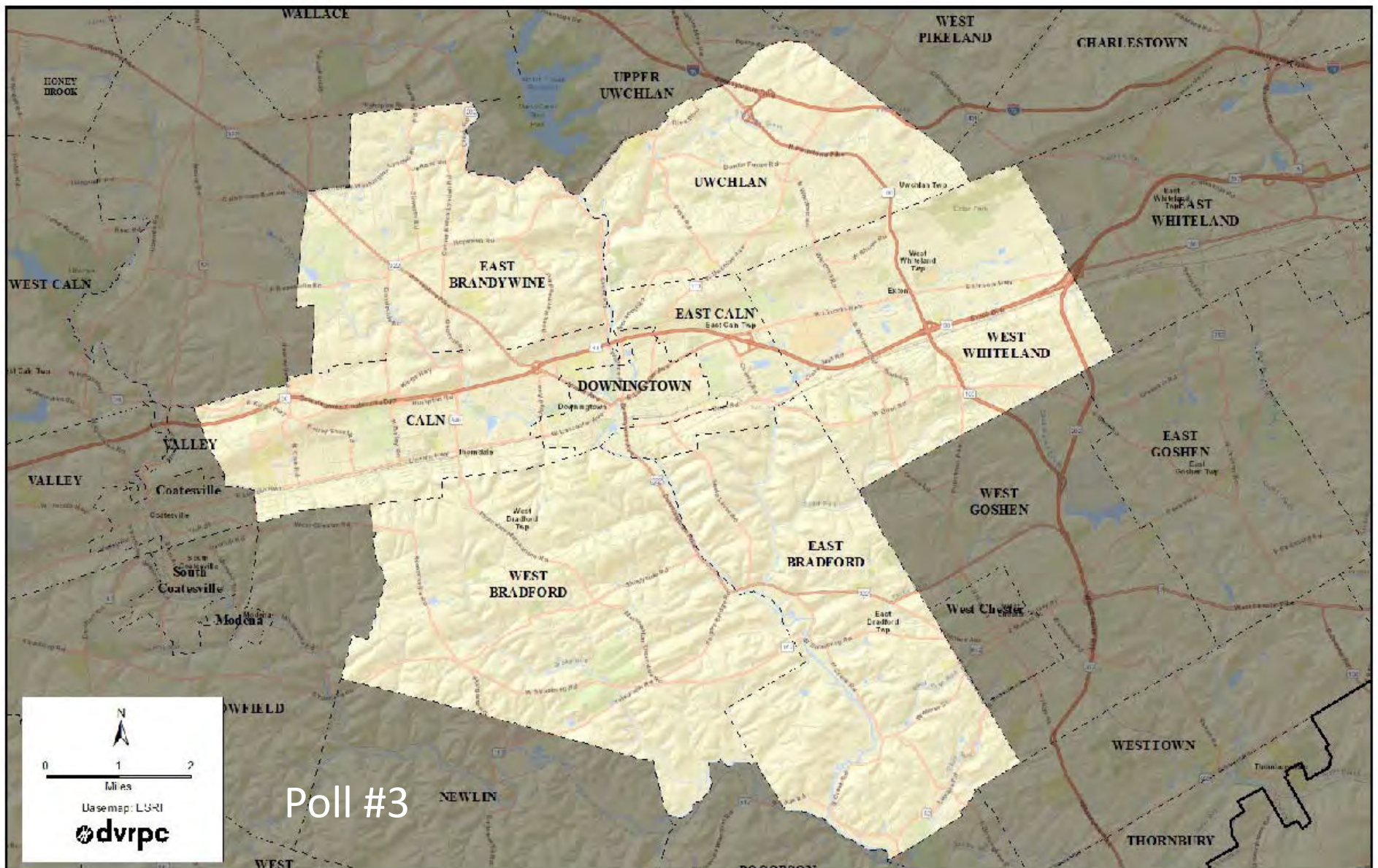
Purpose of Meeting

- Introduce goals and area of study
- Summarize year 1 work
- Receive public feedback on priorities for mobility in and around the study area

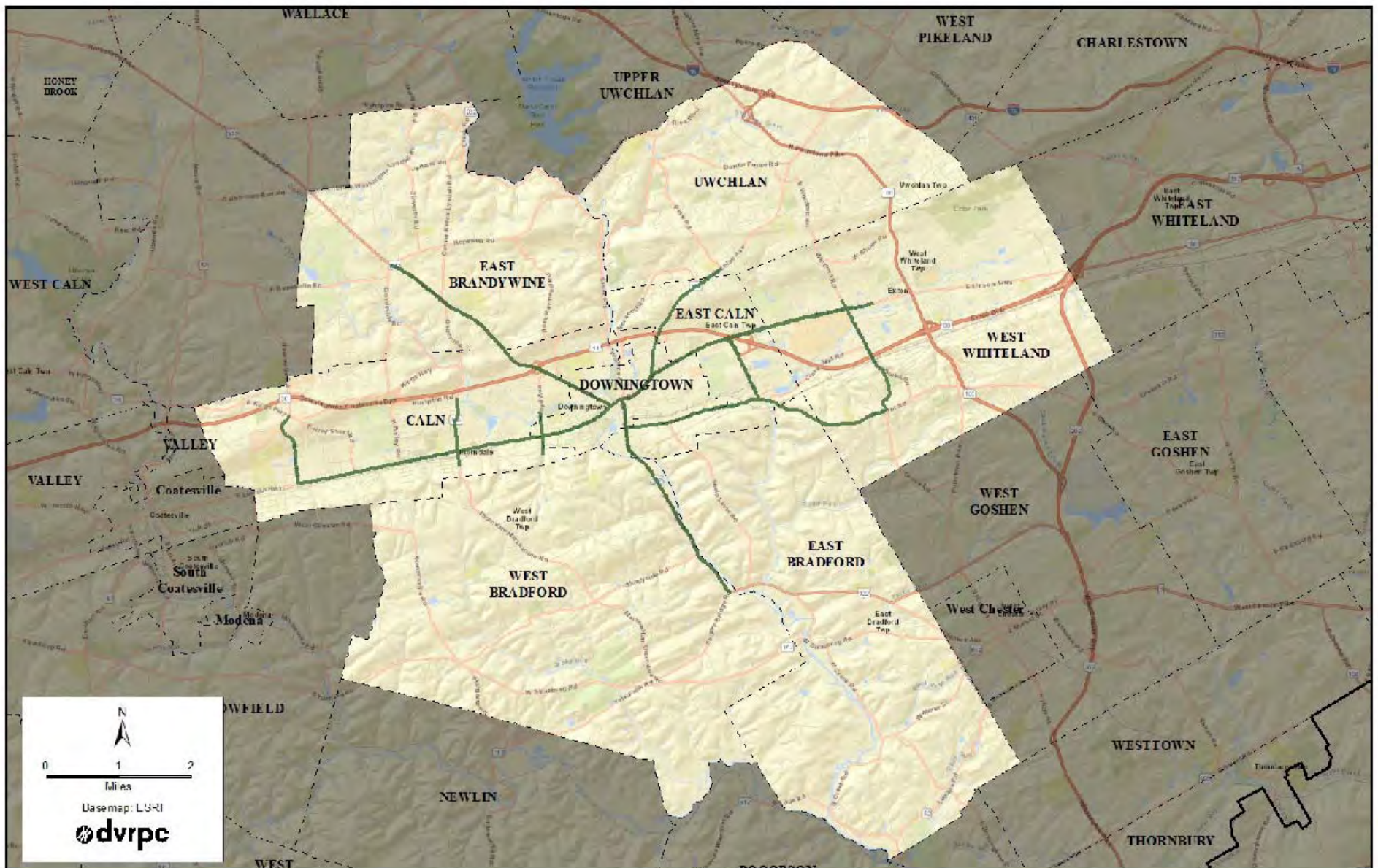


Study Area and Existing Conditions

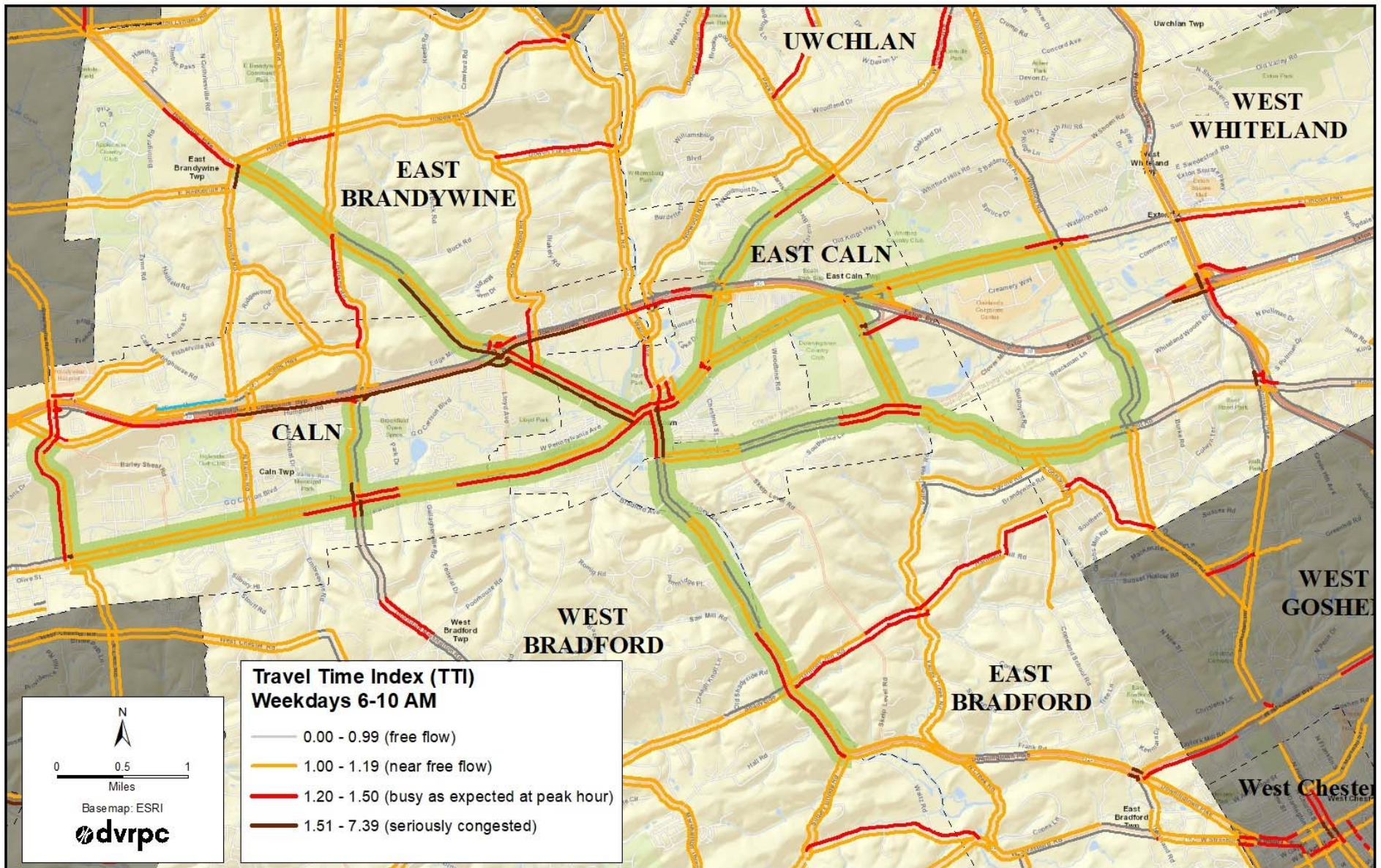
Kerr Park, Downingtown Borough



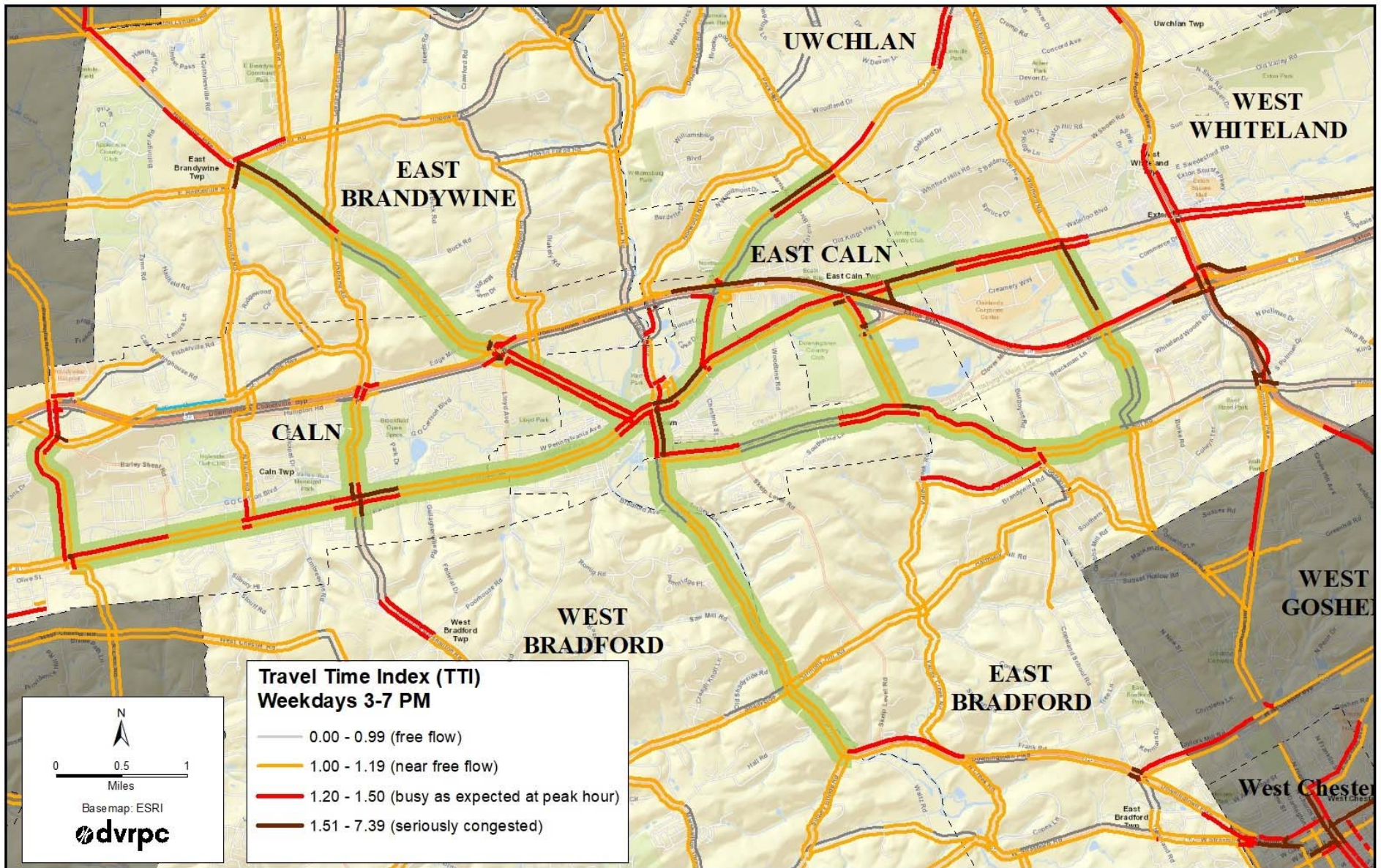
Study Area



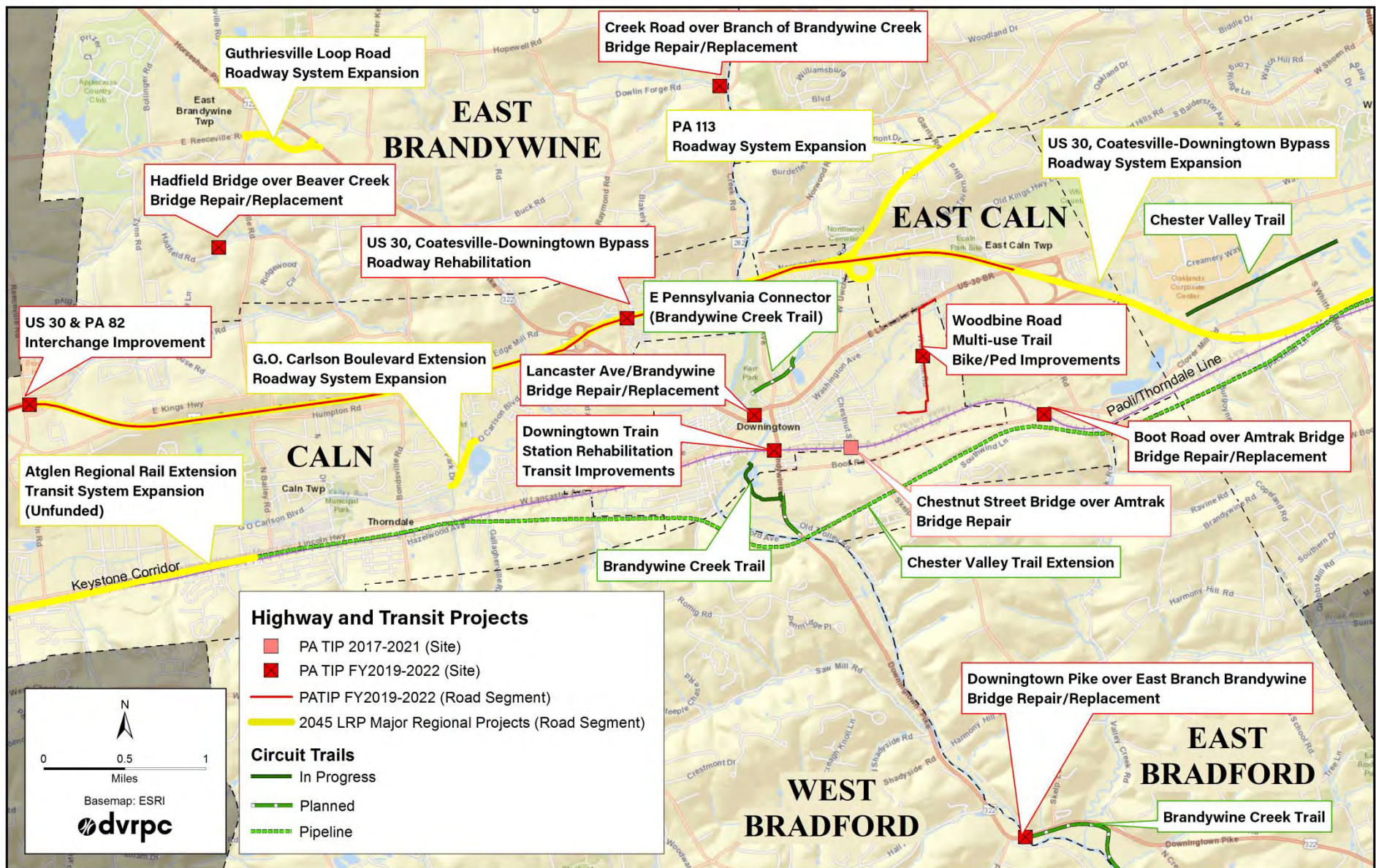
Study Area and Network



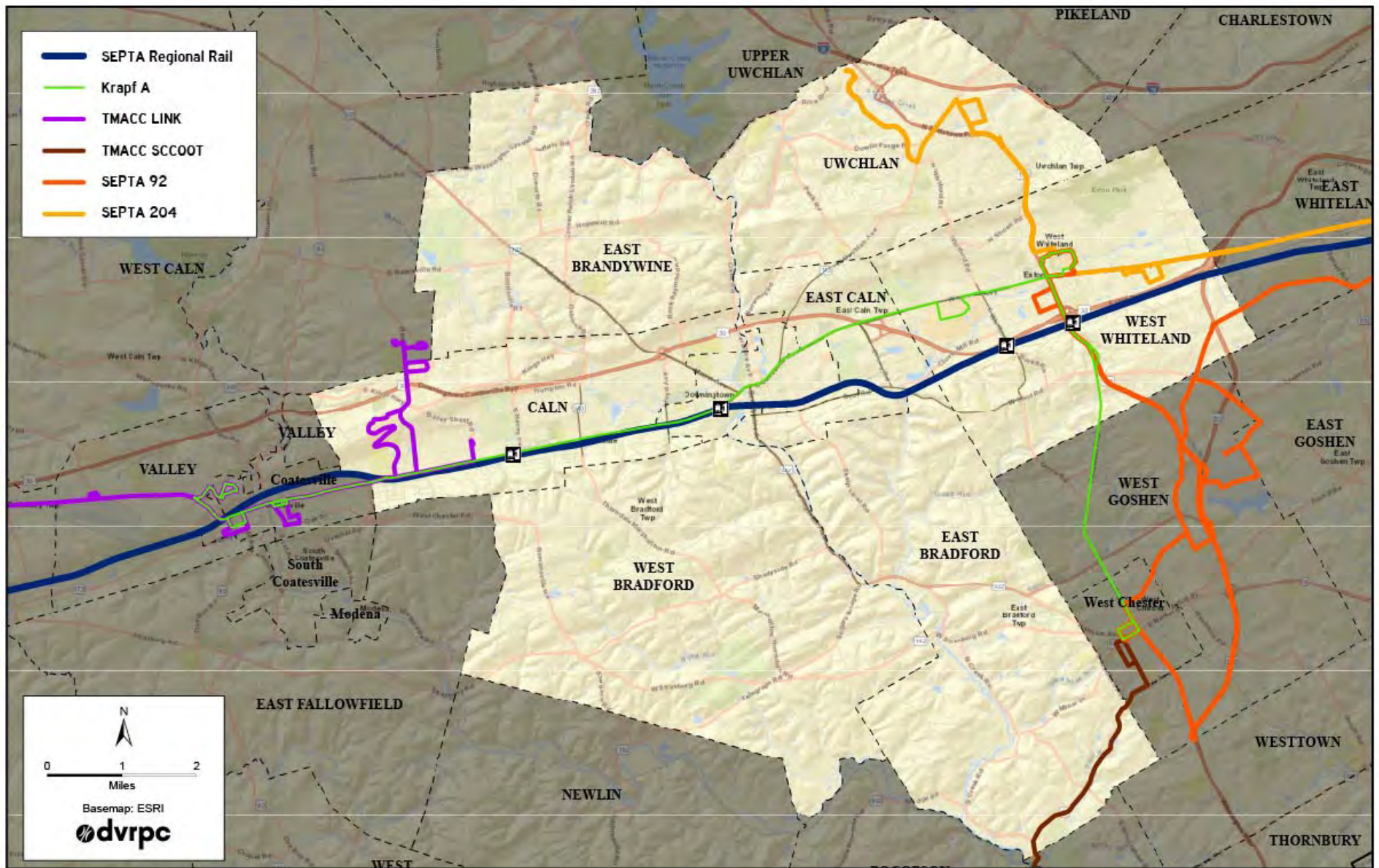
AM Travel Time Index



PM Travel Time Index

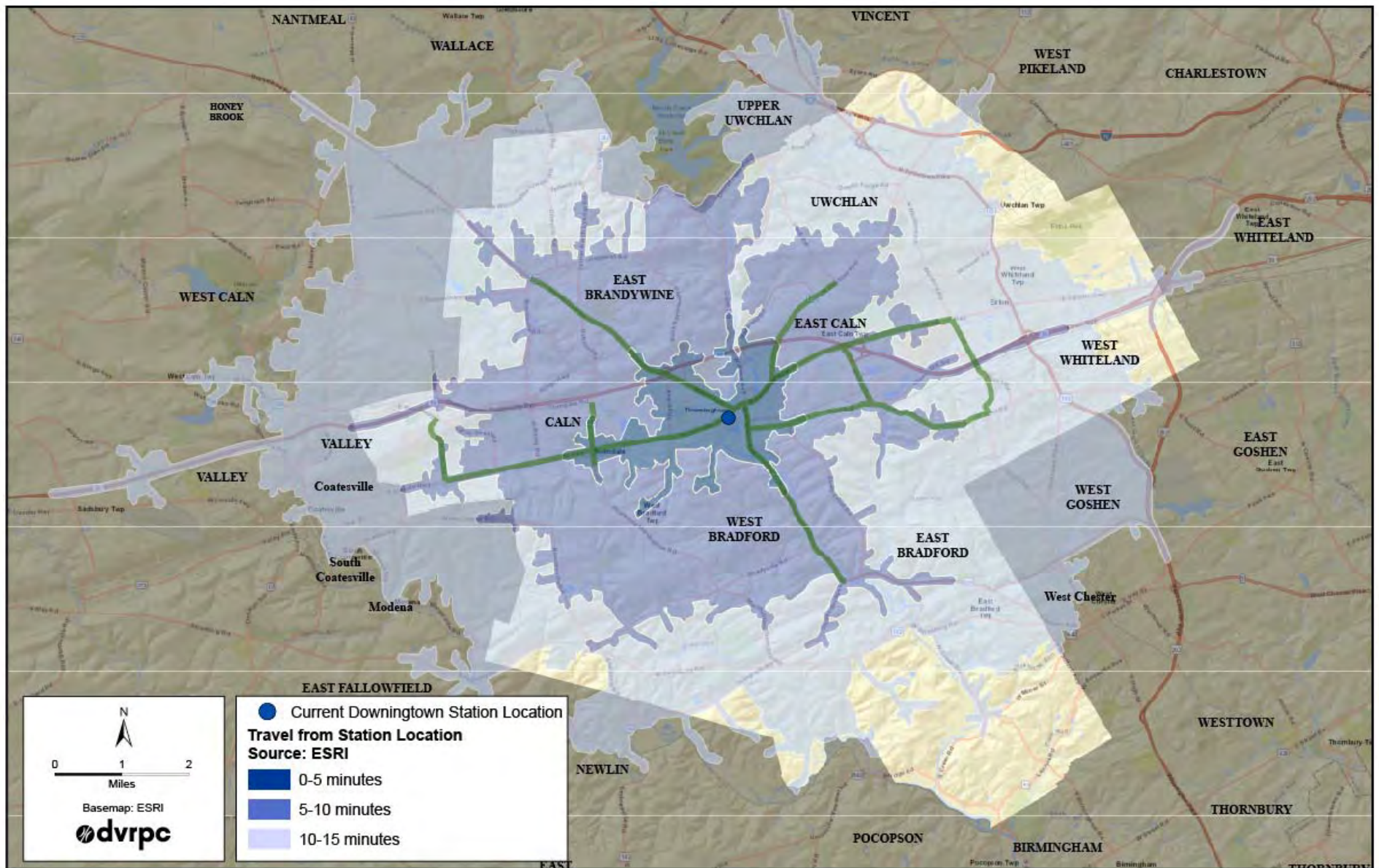


Planned Transportation Projects

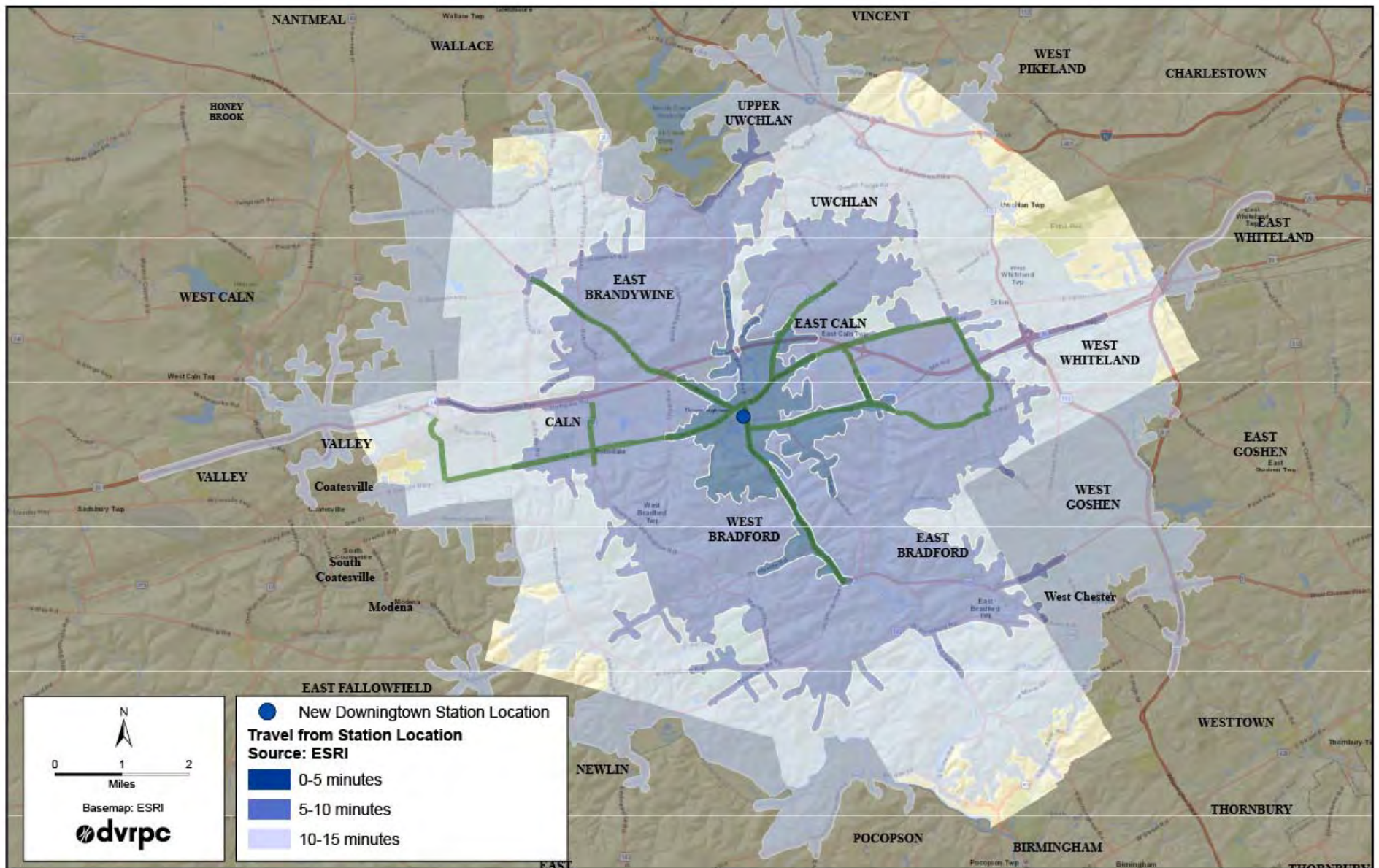




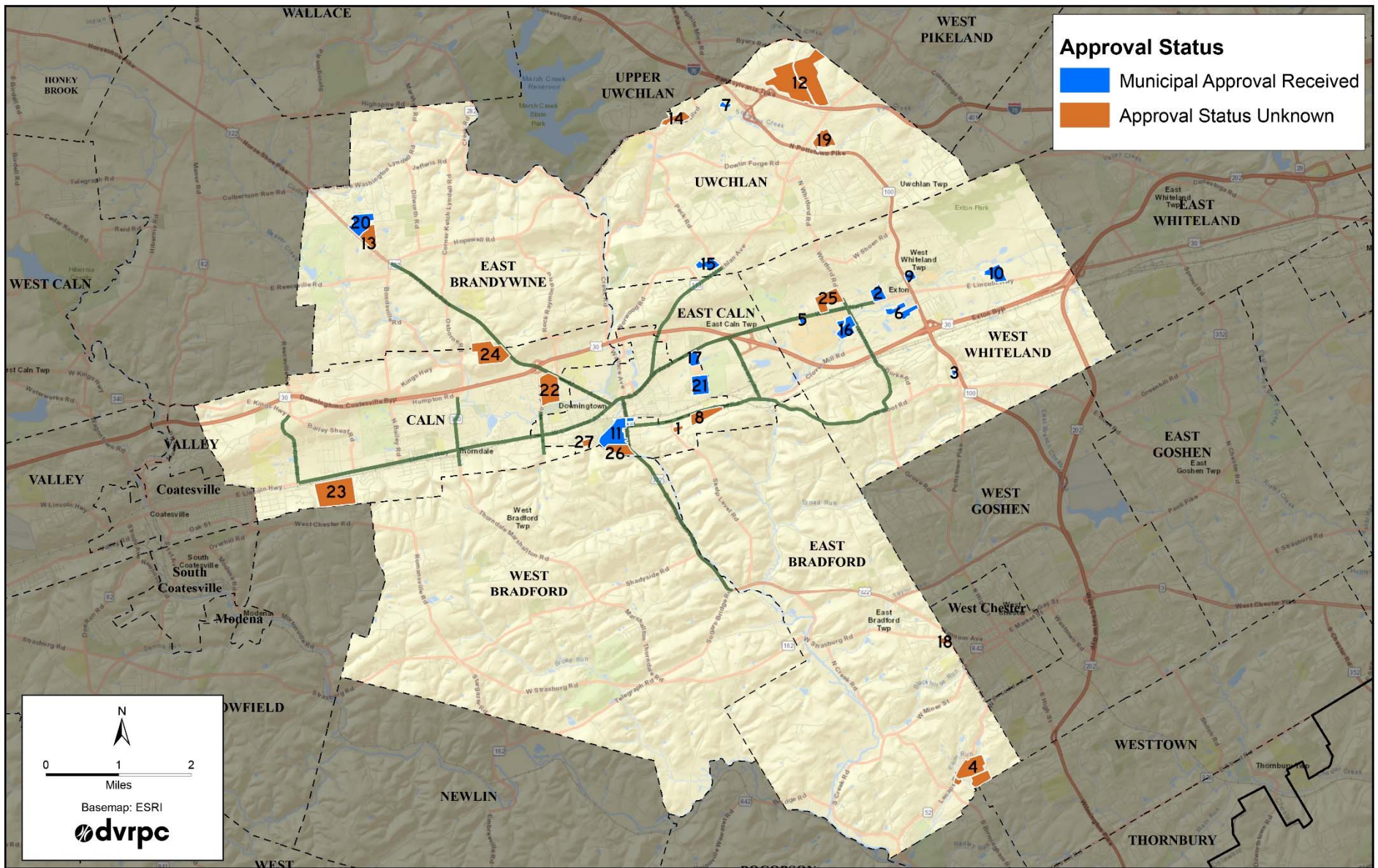
dvrpc *Transit*



AM Travel to/from Downtown Station



AM Travel to/from New Station Location



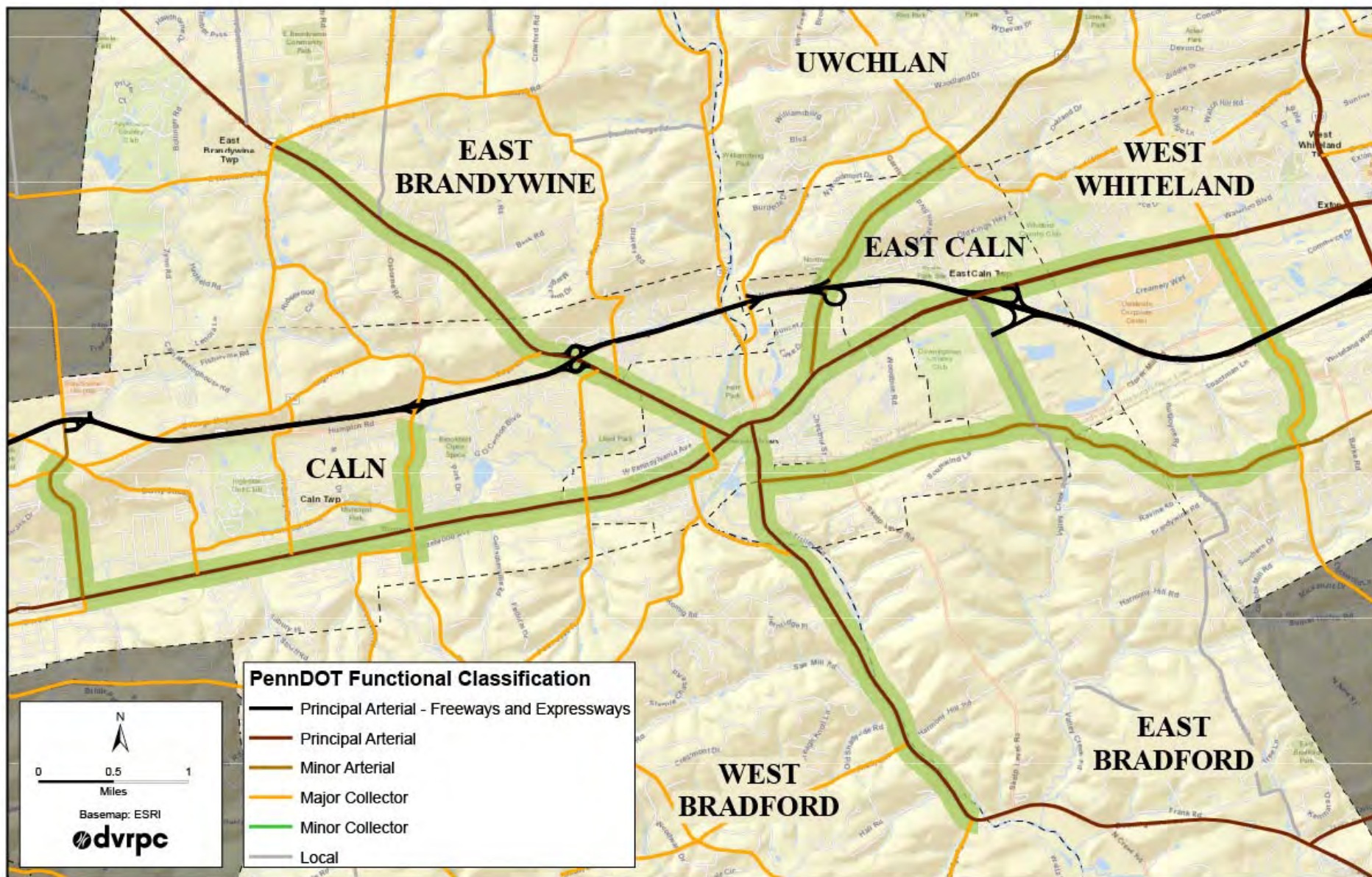
*Land Developments January 2016–May 2019
(at least 50 units and/or 50,000 SQ FT)*

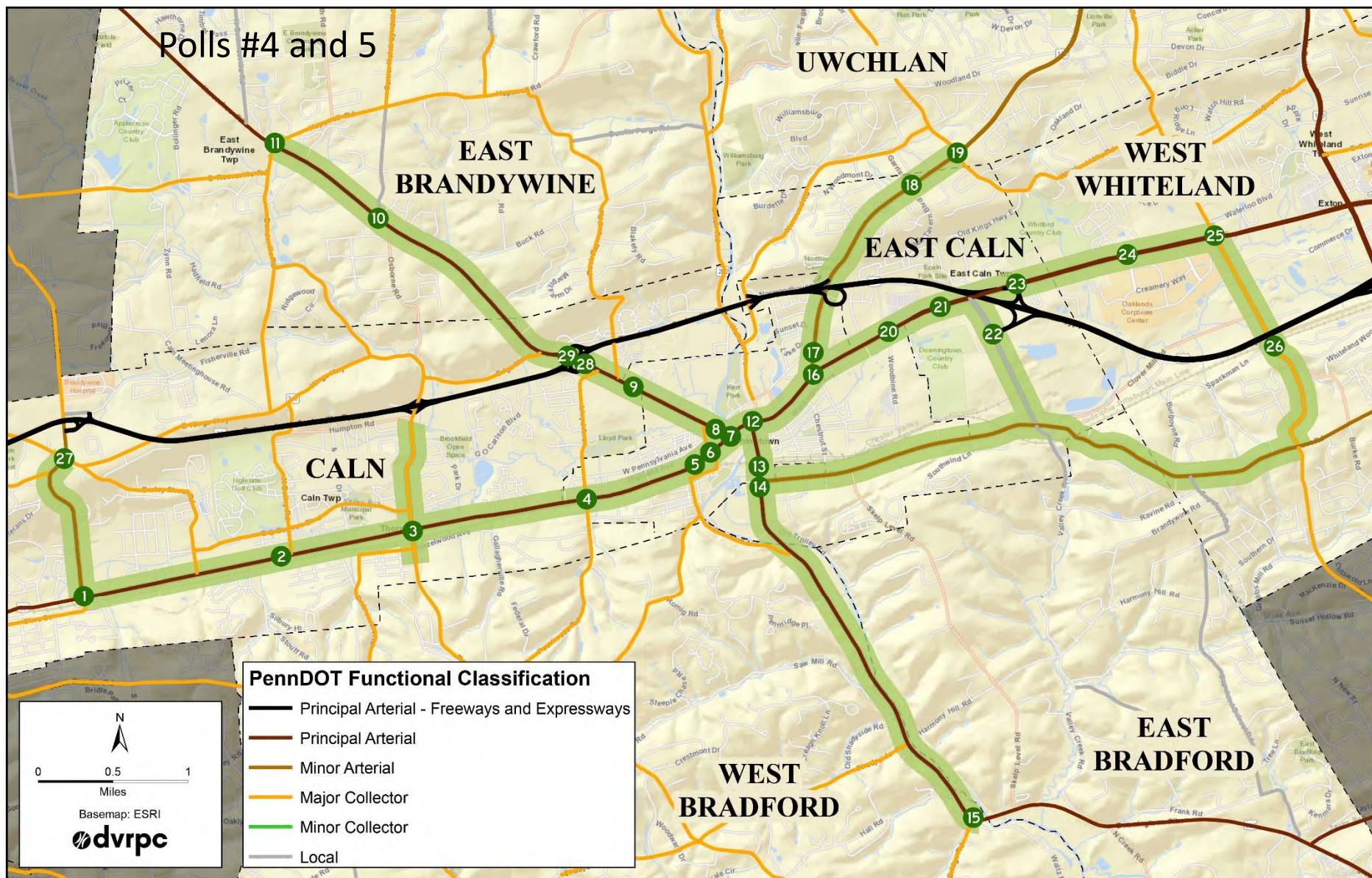
Highlight of Area Projects

- **27** known large land development projects
- **6** bridges identified for repair
- **2** planned transit projects
 - Downingtown Train Station relocation
 - Extension of SEPTA Paoli-Thorndale line to Coatesville
- **1** roadway rehabilitation project
 - US 30 Bypass ITS Project



Study Area





Roadway Functional Class & Intersections

Wrap Up and Q&A

Boot Road, East Caln Township

Traffic Modeling Scenarios

Scenario (Model Year)	Model Component	Fall 2019 traffic counts	Development traffic growth/decline	Programmed transportation projects	Downingtown station move and Coatesville extension	Recommended improvements at study intersections
Existing (2019)	●					
No Build (2035)		●	●			
Build (2035)		●	●	●		
Build + Improvements (2035)		●	●	●		●

Next Steps

- Develop traffic models for four scenarios
- Qualitative recommendations throughout study area
- Present model results and recommendations in second set of public meetings in **Spring 2021**

Poll #6

Thank you.

Camden Palvino
Transportation Engineer
cpalvino@dvrpc.org | 585.420.8933

