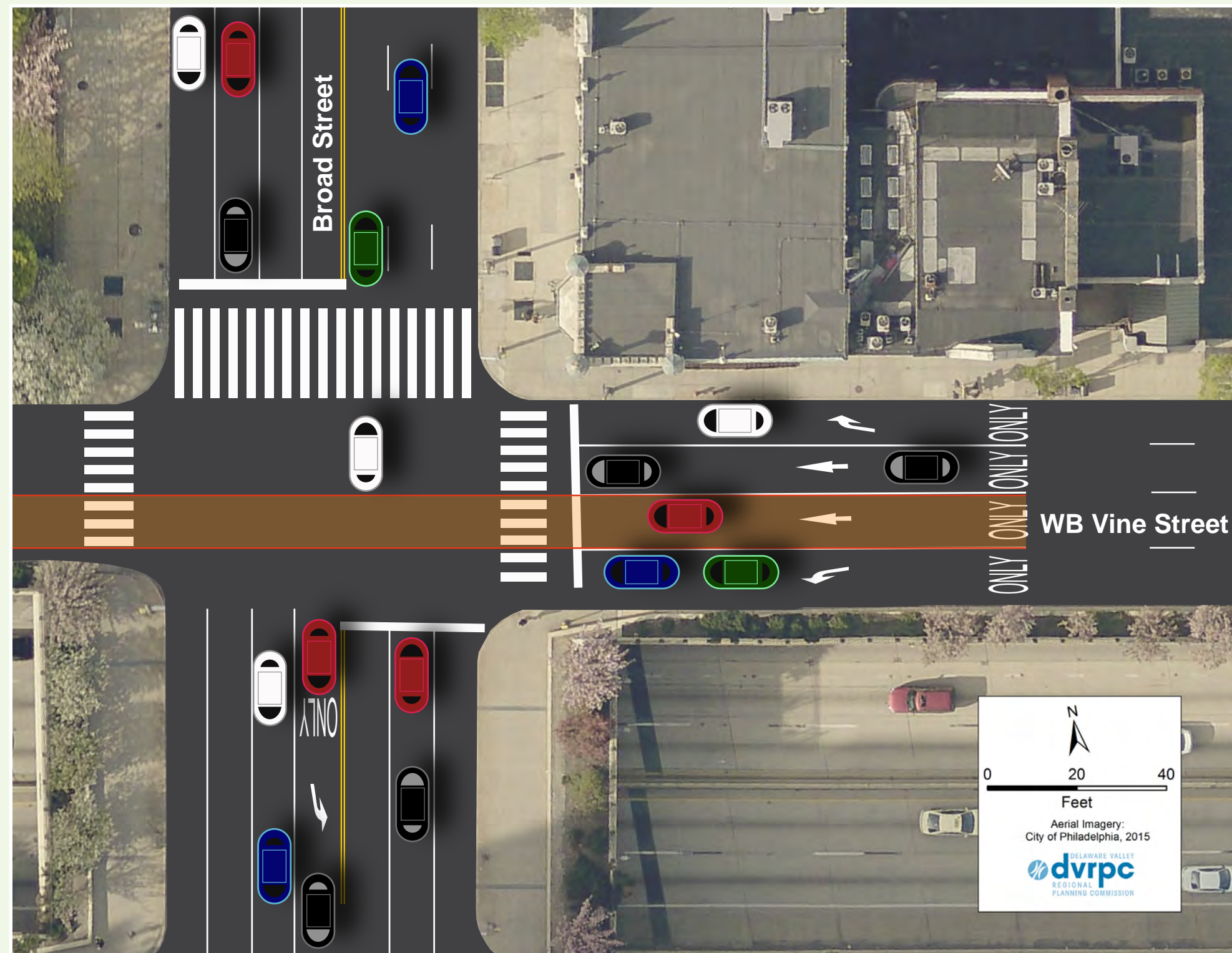


## Turning Movements 轉向交通

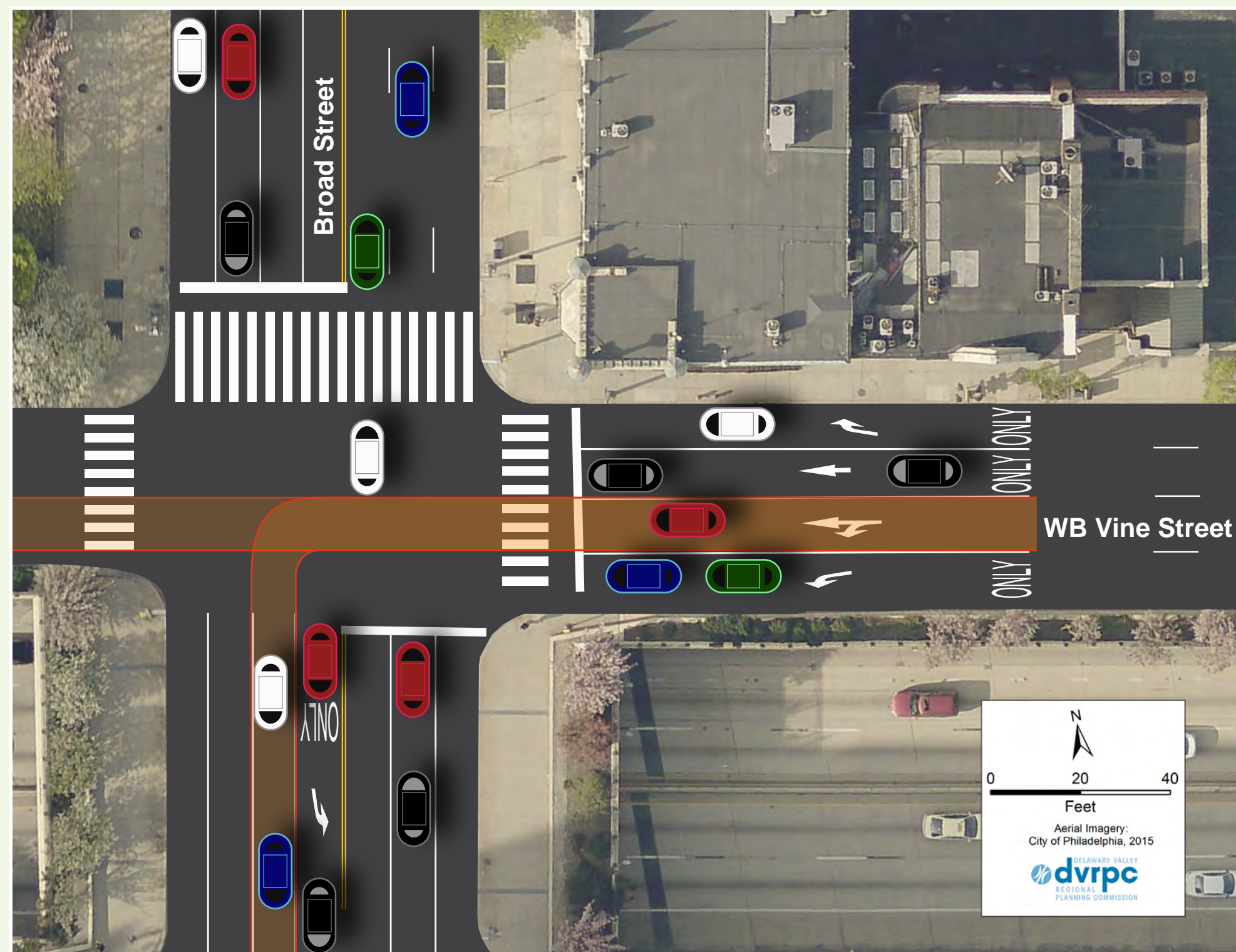
At the intersections of Vine Street and Broad Street and Vine Street and 8th Street, too many vehicles line up and wait to turn, adding to air pollution and sometimes blocking crosswalks. By adding another turning lane at each of these intersections, vehicle delay is reduced and crosswalks are kept clear.

在Vine街與Broad街以及Vine街與第8街的交叉路口，排隊等待轉彎的車輛過多，使空氣污染加劇，有時還會造成人行橫道堵塞。在這些交叉路口各增加一個轉彎車道，可以減少車輛延誤，確保人行橫道通暢。

### Existing Conditions at Vine St and Broad St Vine街和Broad街的目前情況

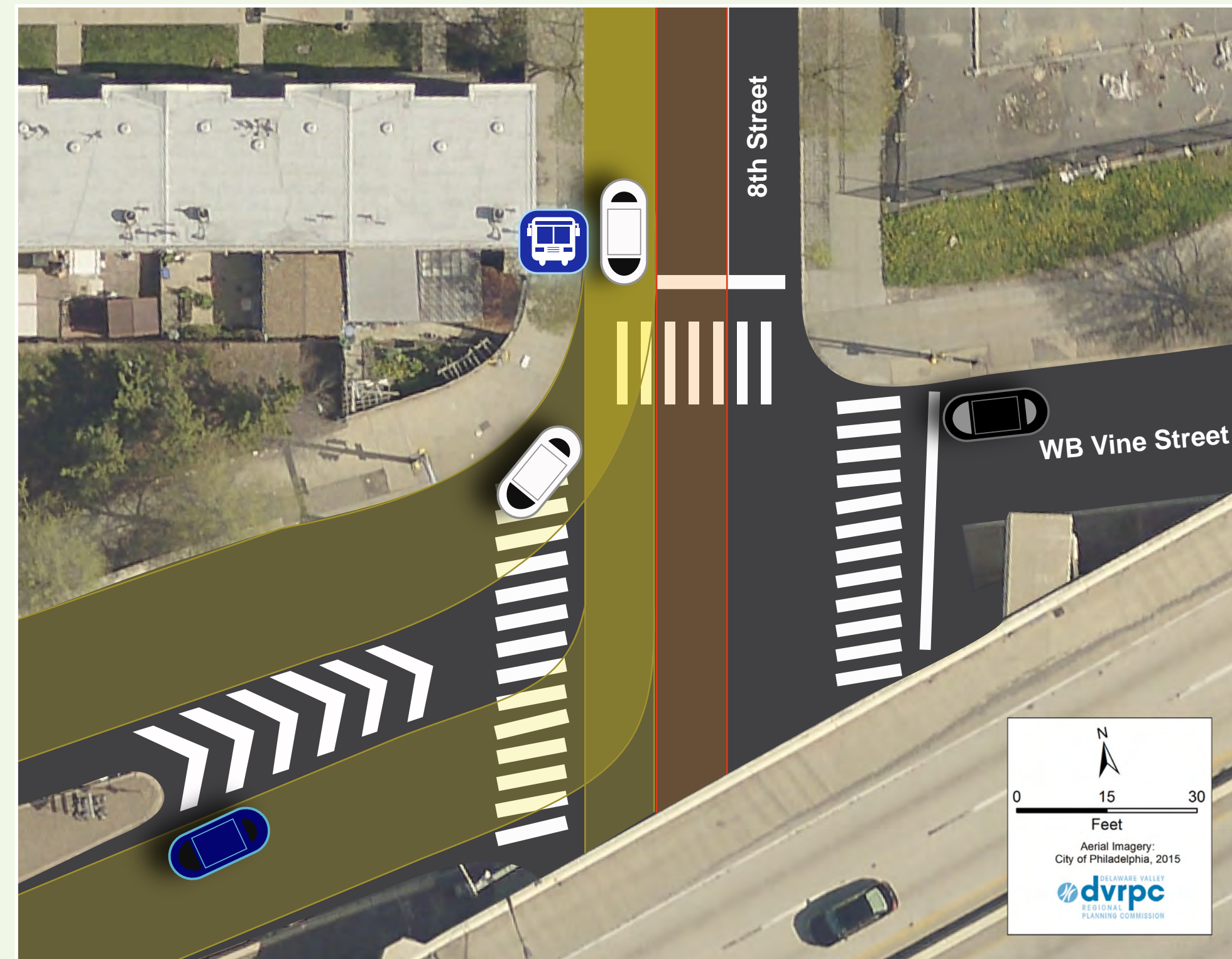


### Proposed Improvement at Vine St and Broad St Vine街和Broad街的擬定優化

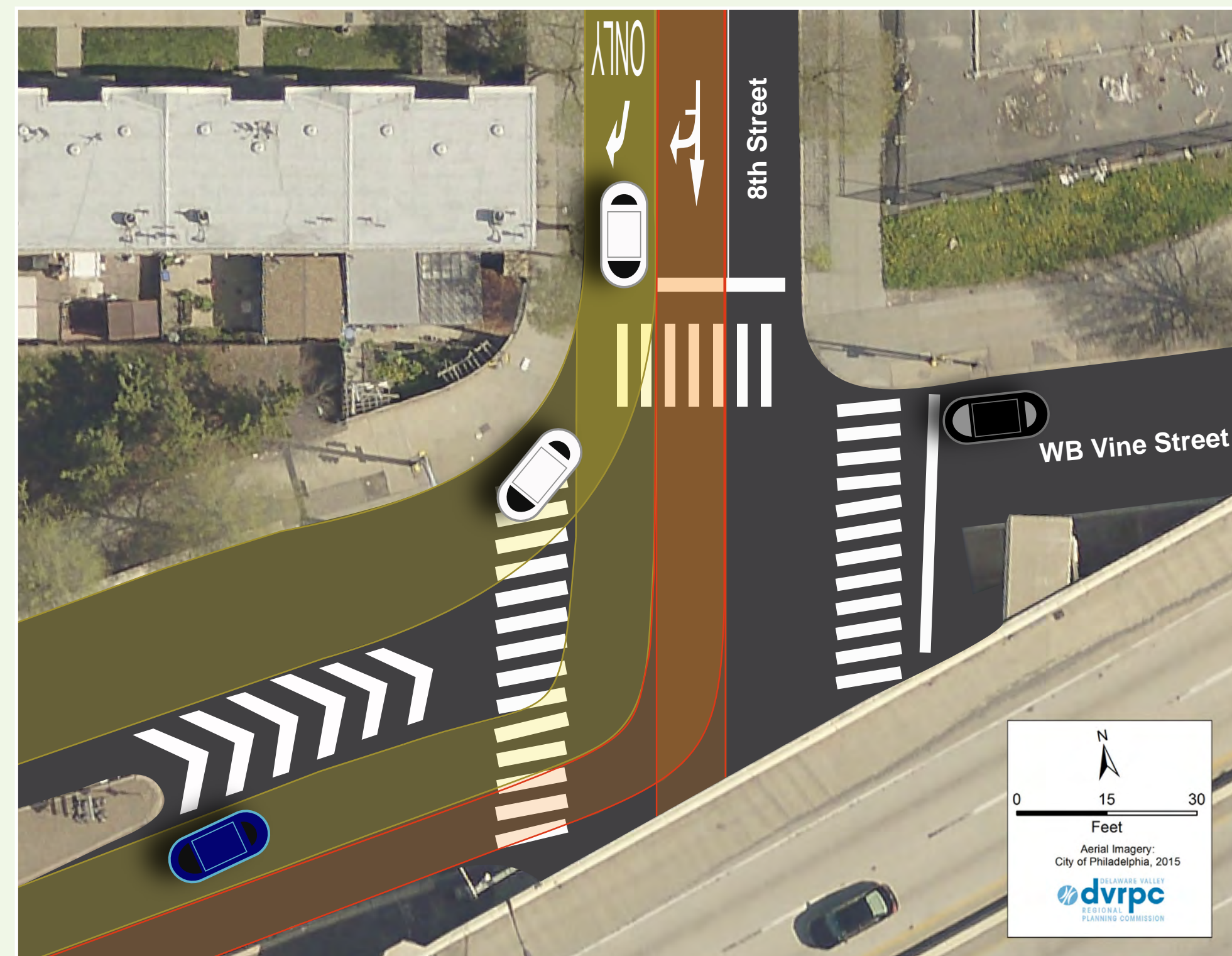


Do you like this proposed improvement?  
你喜歡這個提議的改進嗎？

### Existing Conditions at Vine St and 8th St Vine街和第8街的目前情況



### Proposed Improvement at Vine St and 8th St Vine街和第8街的擬定優化

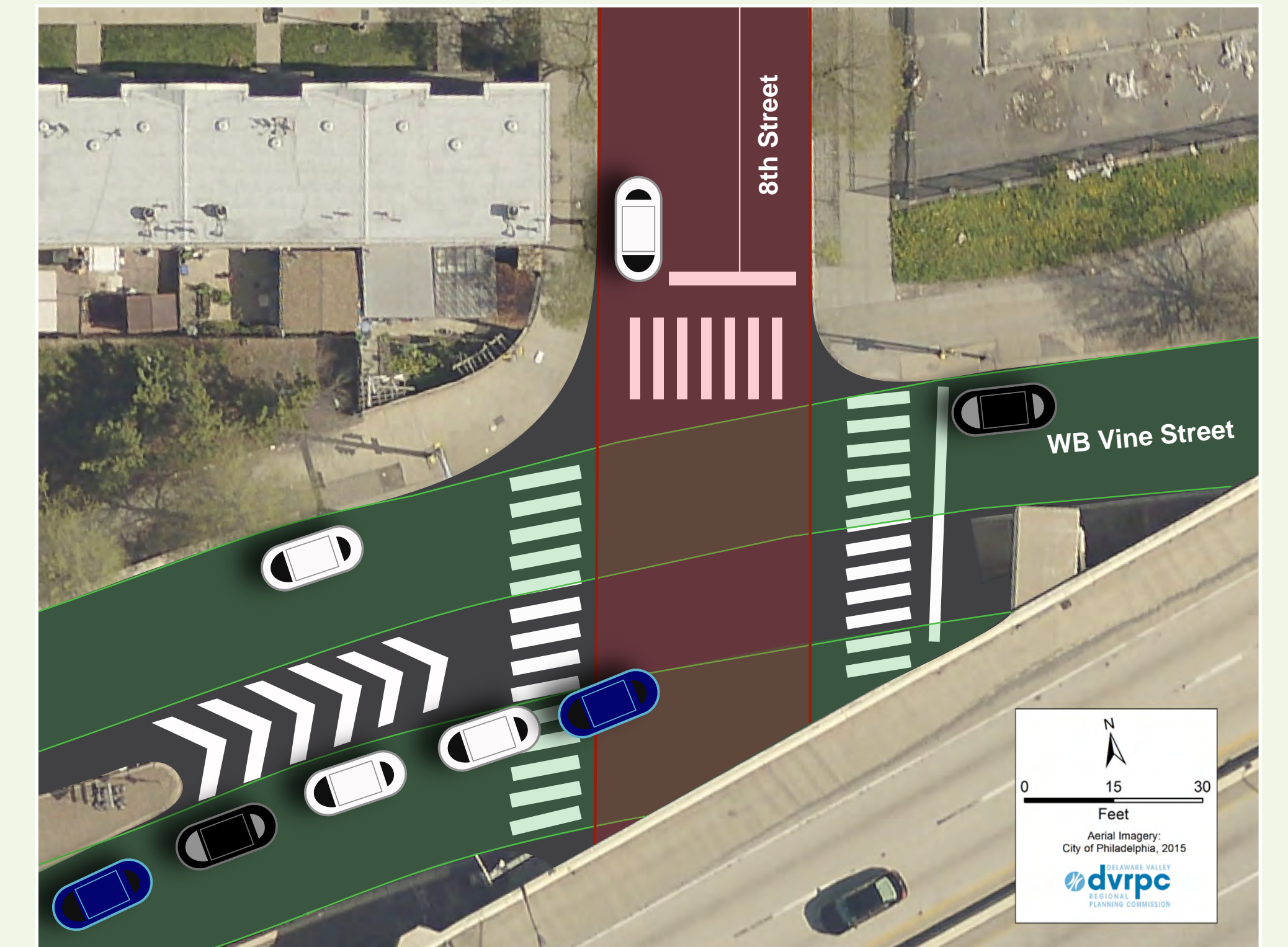


Do you like this proposed improvement?  
你喜歡這個提議的改進嗎？

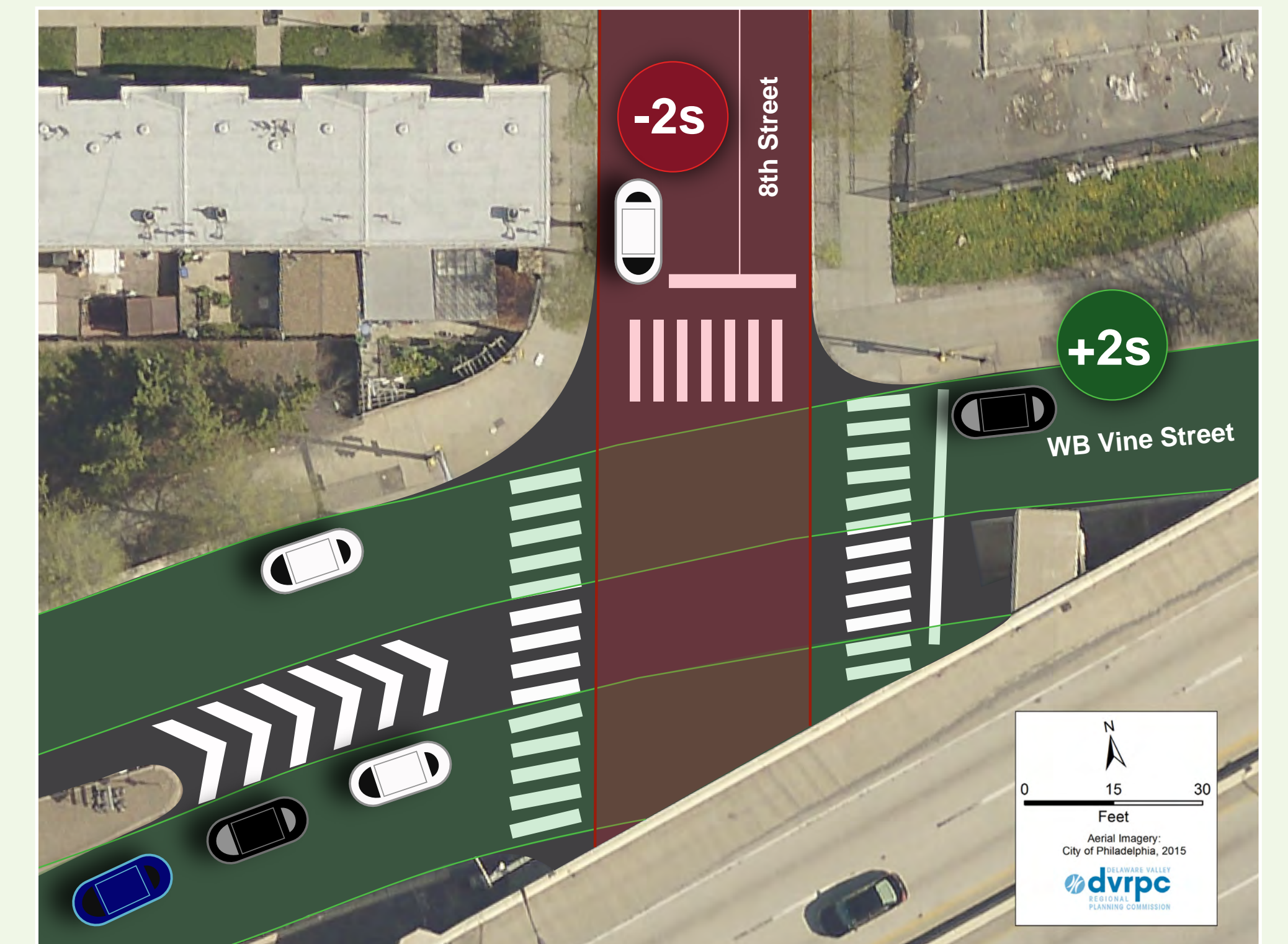
## Signal Timing 信號定時

Adding 2 seconds of green time for westbound traffic alleviates congestion, while maintaining a comfortable pedestrian crossing speed of 3.5 feet per second. 西行方向車道綠燈時間延長2秒，可減少交通堵塞，並使行人穿行速度保持在較為舒適的3.5英尺/秒。

### Existing Conditions at Vine St and 8th St Vine街和第8街的目前情況



### Proposed Improvement at Vine St and 8th St Vine街和第8街的擬定優化



Do you like this proposed improvement?  
你喜歡這個提議的改進嗎？

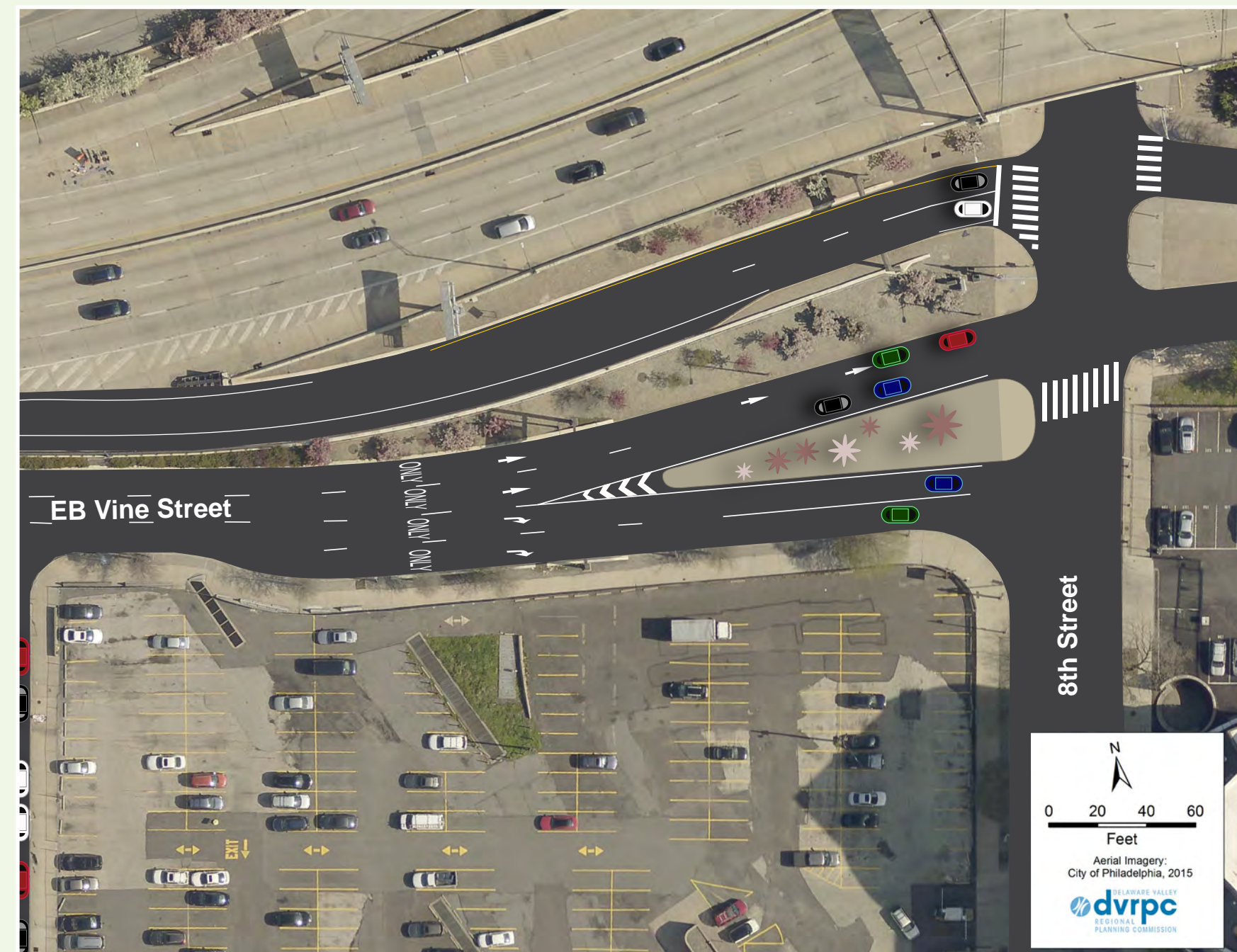


## Road Diet 道路精簡

Removing a travel lane from a 3- or 4-lane road can encourage drivers to slow down, while creating new space for pedestrians, cyclists, and transit.

從3車道或4車道道路中移除一個車道，可以鼓勵司機放慢車速，同時為行人、騎行者和公共交通帶來新的空間。

Existing Conditions at Vine St and 8th St  
Vine街和第8街的目前情況



Proposed Improvement at Vine St and 8th St  
Vine街和第8街的擬定優化



Proposed Improvement at Vine St and 8th St  
Vine街和第8街的擬定優化



Do you like this proposed improvement?  
你喜歡這個提議的改進嗎？

## Signalized “T” Intersection 帶信號燈的「T」形路口

The existing ramp at 9th Street and Vine Street Westbound causes congestion and encourages weaving on Vine Street. Redesigning the intersection and adding a traffic signal improves traffic flow and enables a road diet between 9th Street and 12th Street.

第9街和Vine街（西行方向）的現有斜坡導致堵塞，使Vine街車輛穿梭較多。重新設計交叉路口，增加一個交通信號燈，這麼做可以優化車流，使第9街與第12街之間實現道路精簡。

Existing Conditions at Vine St and 9th St  
Vine街和第9街的目前情況



Proposed Improvement at Vine St and 9th St  
Vine街和第9街的擬定優化



Proposed Improvement at Vine St and 9th St  
Vine街和第9街的擬定優化



Do you like this proposed improvement?  
你喜歡這個提議的改進嗎？



Existing Lane Configuration on Vine St between Broad St and 8th St

位於Broad街與第8街之間的Vine街上目前的車道設置



## Road Diet: Short-Term 道路精簡：短期

In the short-term, the removal of one travel lane between Broad Street and 11th Street would result in a consistent 2- travel lane cross section in the eastbound direction from Broad Street to 9th Street. 短期內，移除Broad街與第11街之間的一個車道會在Broad街至第9街東行方向上形成一個統一的2車道結構。

Proposed Road Diet on Vine St Eastbound between Broad St and 11th St  
位於Broad街與第11街之間Vine街（東行方向）的擬定道路精簡



## Road Diet: Long-Term 道路精簡：長遠

A road diet in the westbound direction is possible with the implementation of a signalized, “T” intersection at 9th Street. As a result, a proposed road diet between 9th and 12th Streets in the westbound direction is a long-term improvement. 在第9街設定一個有信號燈的「T」形路口，可能在西行方向上精簡道路。因此，在第9街與第12街之間西行方向的擬定道路精簡是一種長遠的改善方案。

Do you like these proposed improvements?  
你喜歡這個提議的改進嗎？

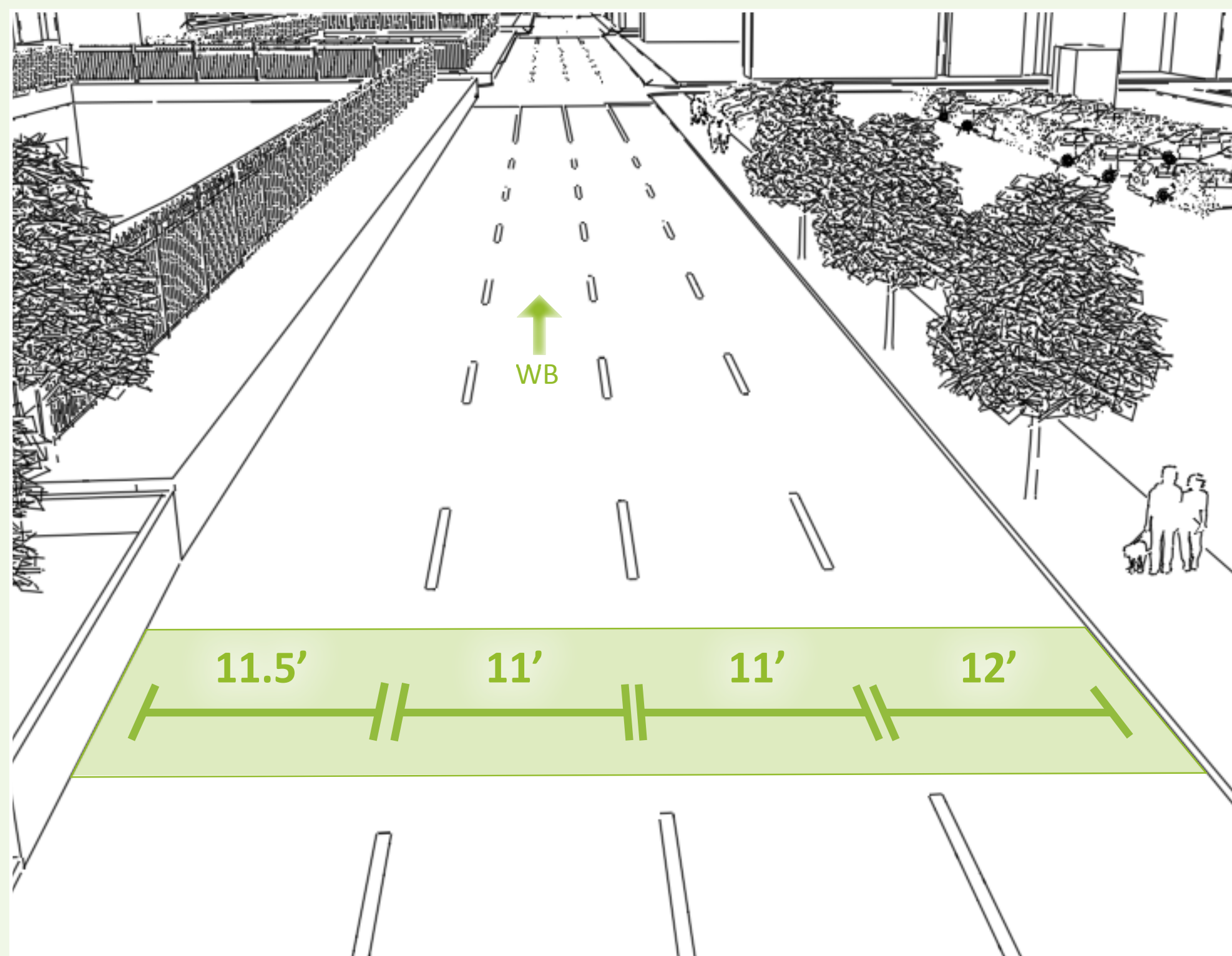


## Lane Narrowing 車道變窄

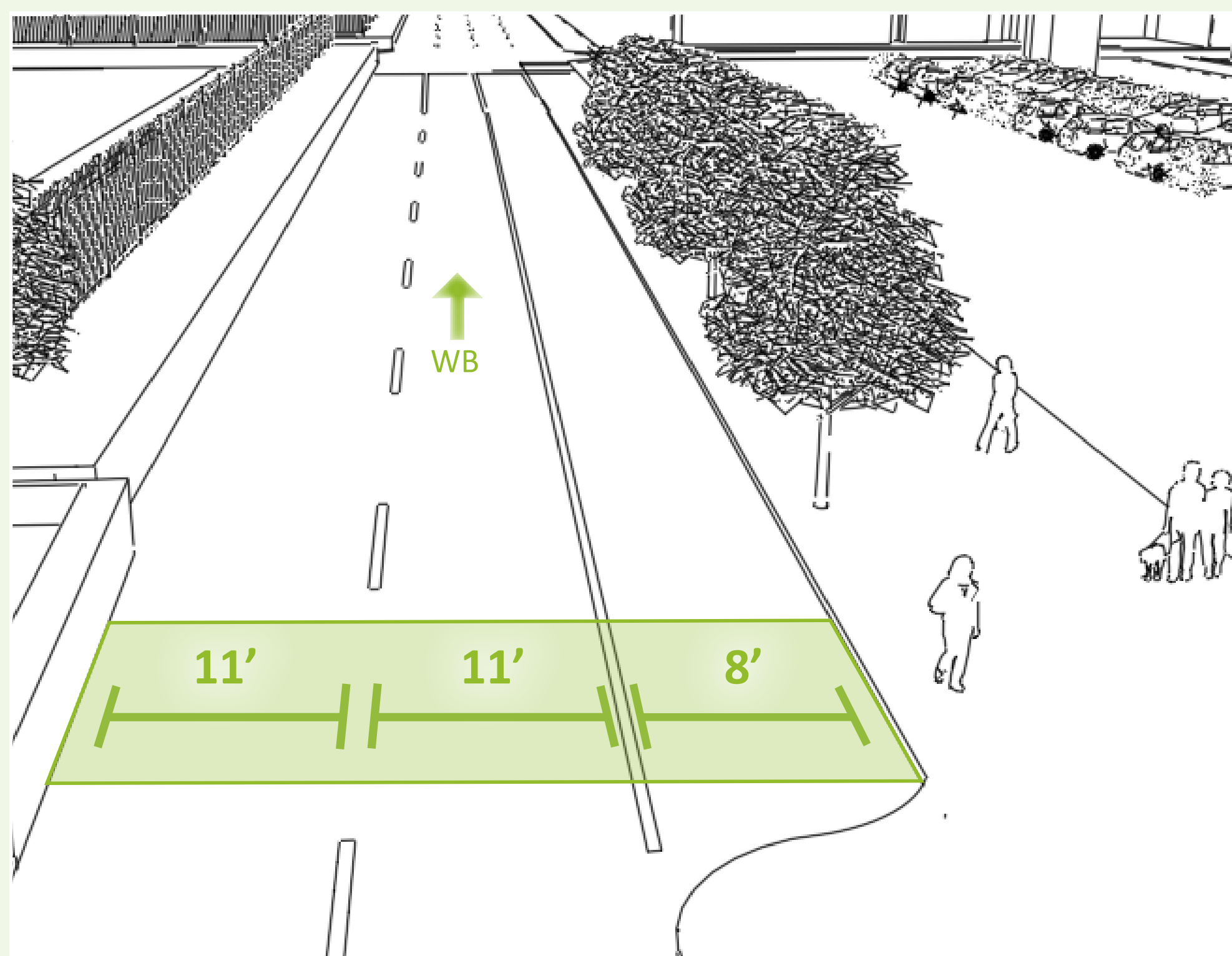
Narrower travel lanes result in a visual profile that discourages speeding. The “reclaimed” space from narrowing the travel lanes can be allocated to other improvements, such as curb extensions or landscaping enhancements.

較窄的車道可以在視覺上阻礙超速行駛。因車道變窄而「回收」的空間可分配用於其他優化，如路緣擴充區或景觀強化設施。

### Existing Conditions at Vine St and 10th St Vine街和第10街的目前情況



### Proposed Improvement at Vine St and 10th St Vine街和第10街的擬定優化



Do you like this proposed improvement?  
你喜歡這個提議的改進嗎？

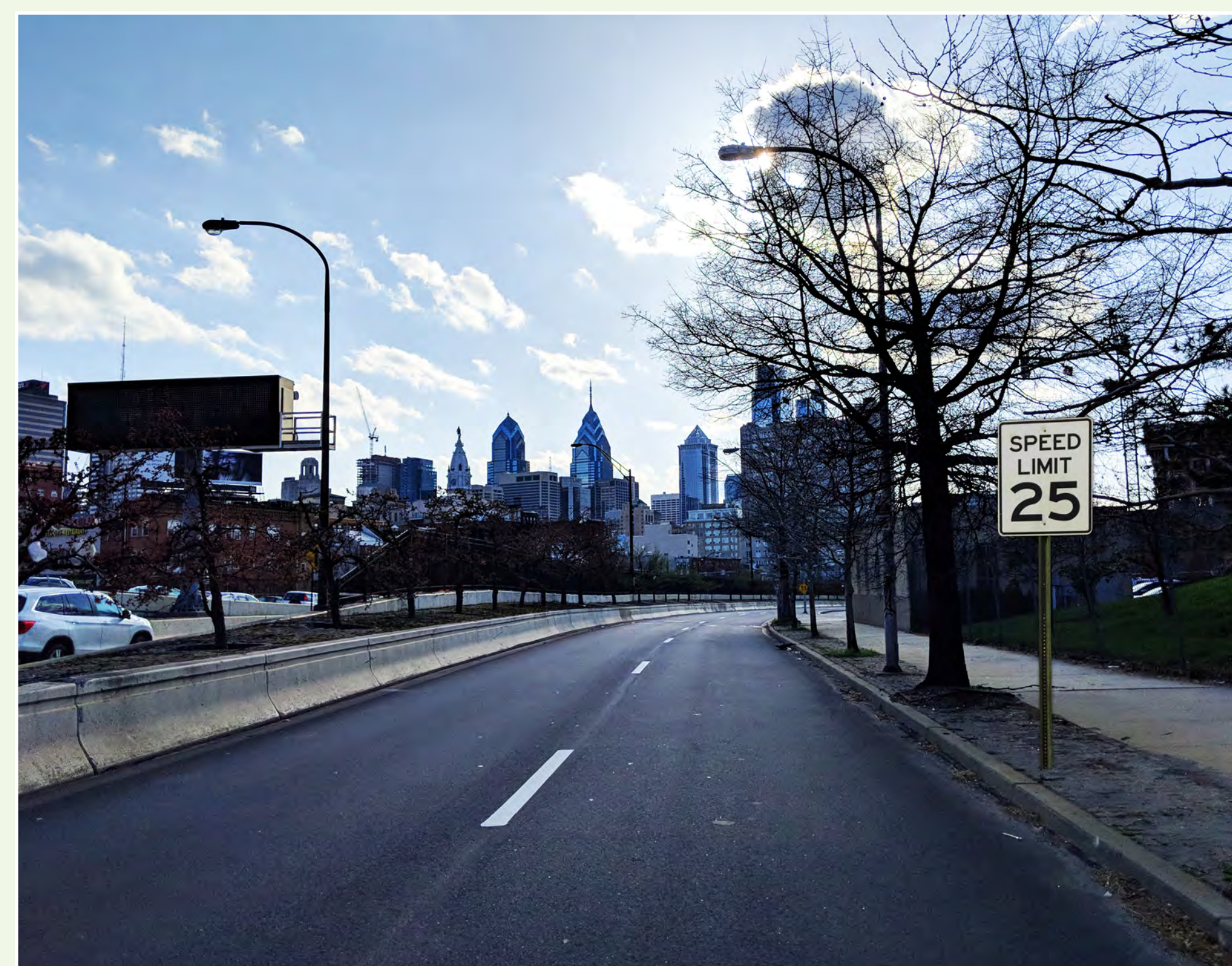
## Speed Limit Signs 限速標誌

At key entry points to the corridor, well-placed speed limit signs will remind drivers to slow down to 25 miles per hour. 在廊道的關鍵入口點設定恰當的限速標誌可提醒司機將車速降至25英里/小時。

### Proposed Sign at Vine St Eastbound and 13th St Vine街（東行方向）和第13街的擬建標誌



### Proposed Sign at Vine St Westbound and 9th St Vine街（西行方向）和第9街的擬建標誌



Do you like this proposed improvement?  
你喜歡這個提議的改進嗎？

## Bicycle Lane Maintenance

### 自行車車道保養

The bicycle lanes on 10th Street and 13th Street are difficult to see, and motor vehicles often drive in the bicycle lanes. Improved pavement markings and protected or buffered bicycle lanes would make these existing facilities safer. 第10街和第13街的自行車車道很不醒目，機動車經常開到自行車車道上。優化路面標誌，保護或緩衝自行車車道，這將提升這些現有設施的安全性。

### Existing Conditions at 13th St Bridge over I-676 第13街橋樑（穿過I-676）的目前情況



### Proposed Improvement at 13th St Bridge over I-676 第13街橋樑（穿過I-676）的擬定優化



Do you like this proposed improvement?  
你喜歡這個提議的改進嗎？



## Which of these do you like the most?

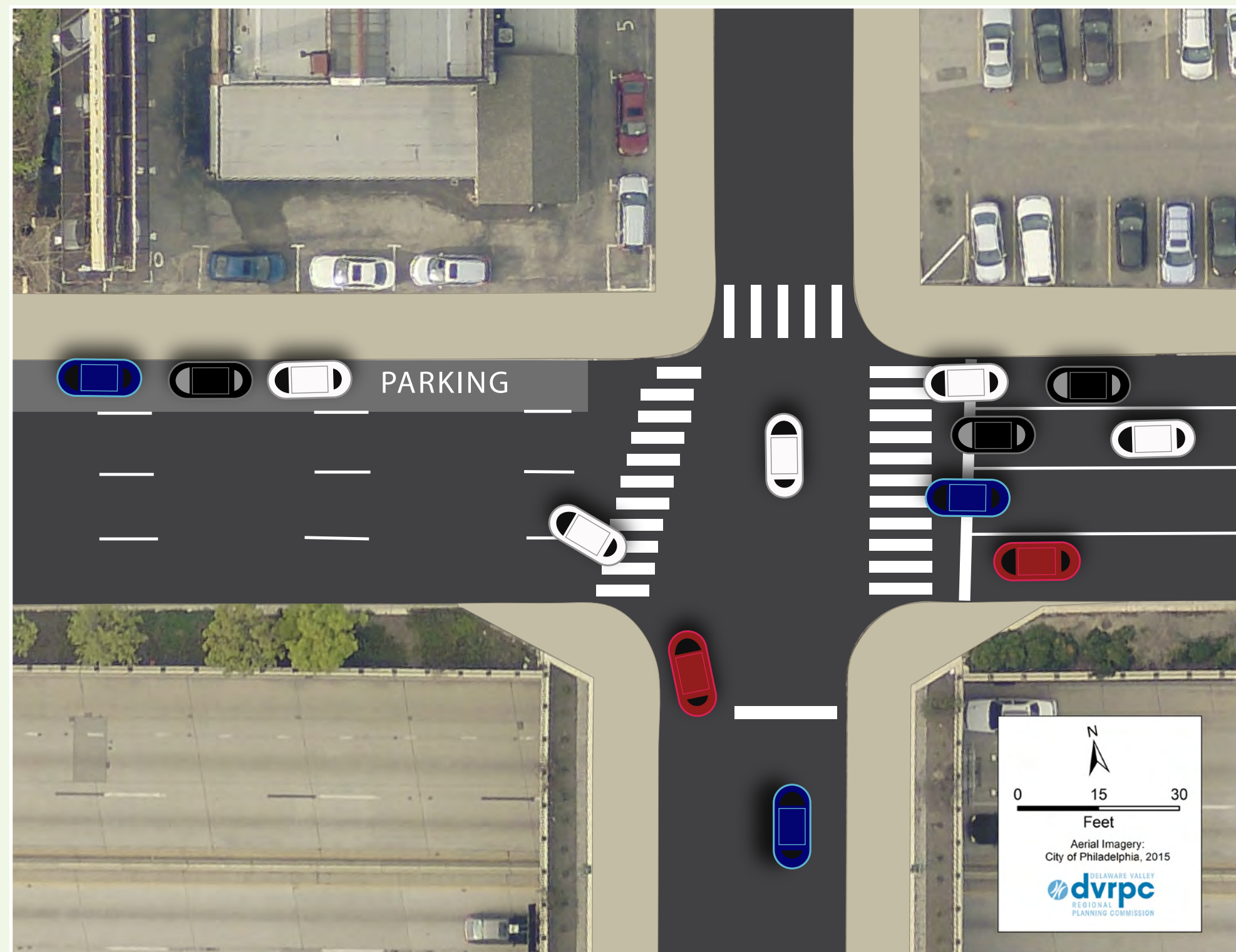
When a travel lane is removed, the roadway and sidewalk can be redesigned to better accommodate other users. Wider sidewalks, pocket parks, bicycle lanes, or a combination of these can be placed in the area previously used by motor vehicles.

在這些內容中，您最喜歡哪一項？

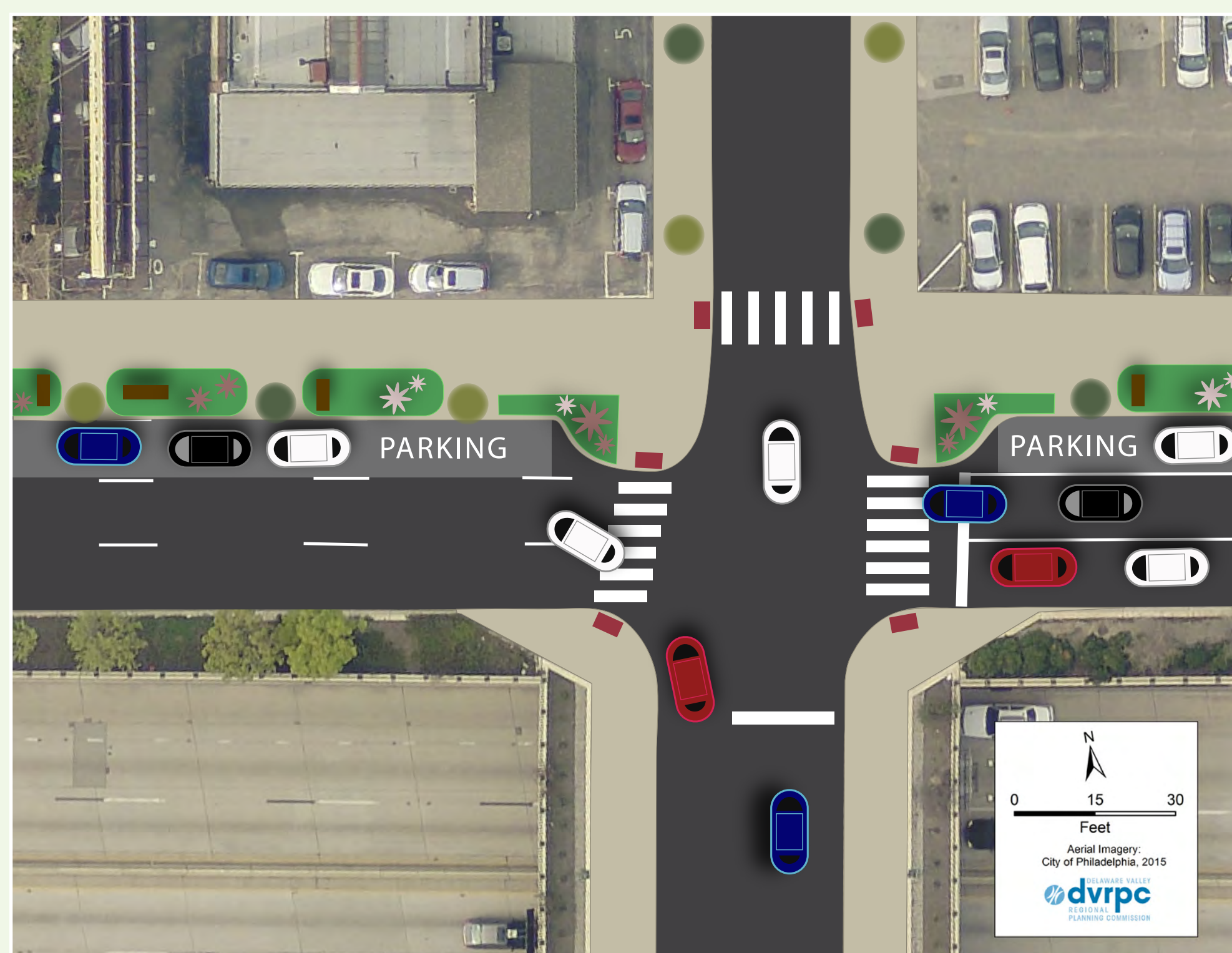
移除一個車道時，可重新設計道路和人行道，從而更好地為其他使用者提供便利。可在之前機動車使用的區域設定寬人行道、小型公園、自行車車道或者以上組合。

## Pocket Parks 小型公園

Existing Conditions on Vine St Westbound  
Vine街（西行方向）的目前情況



Proposed Pocket Parks on Vine St Westbound  
Vine街（西行方向）的擬建小型公園



## Wider Sidewalks 寬人行道

Existing Conditions on Vine St Eastbound  
Vine街（東行方向）的目前情況



Proposed Wider Sidewalk on Vine St Eastbound  
Vine街（東行方向）擬建的寬人行道



## New Eastbound Bicycle Lane 新建自行車車道（東行方向）

Proposed Bicycle Lane on Vine St Eastbound  
Vine街（東行方向）的擬建自行車車道





## Curb Extensions 路緣擴充區

Curb extensions reduce crossing distances by extending sidewalk space at a crosswalk. They provide a safe place for pedestrians to wait, while enhancing the visibility of pedestrian crossings for drivers.

路緣擴充區可以擴展人行橫道的空間，減少過馬路距離。它們為行人提供一個安全的等候區域，同時提升司機對過馬路行人的視野。

### Existing Conditions at Vine St and 11th St Vine街和第11街的目前情況



### Proposed Curb Extension at Vine St and 11th St Vine街和第11街的擬建路緣擴充區



Do you like this proposed improvement?  
你喜歡這個提議的改進嗎？

## ADA-Compliant Ramps 符合ADA要求的斜坡

All curb ramps in the study area should be compliant with the Americans with Disabilities Act (ADA). ADA requirements include a gentle slope from the street to the sidewalk and detectable warning surfaces for the visually impaired.

調查區域內所有路緣斜坡都應符合《美國殘障人士法案》(ADA)的要求。ADA要求包括從街道到人行道設定較平緩的斜坡，以及為視力受損者提供可察覺的警示性平面。

### Existing Conditions at Vine St and 11th St Vine街和第11街的目前情況



### Proposed ADA Ramps at Vine St and 11th St Vine街和第11街符合ADA要求的擬建斜坡



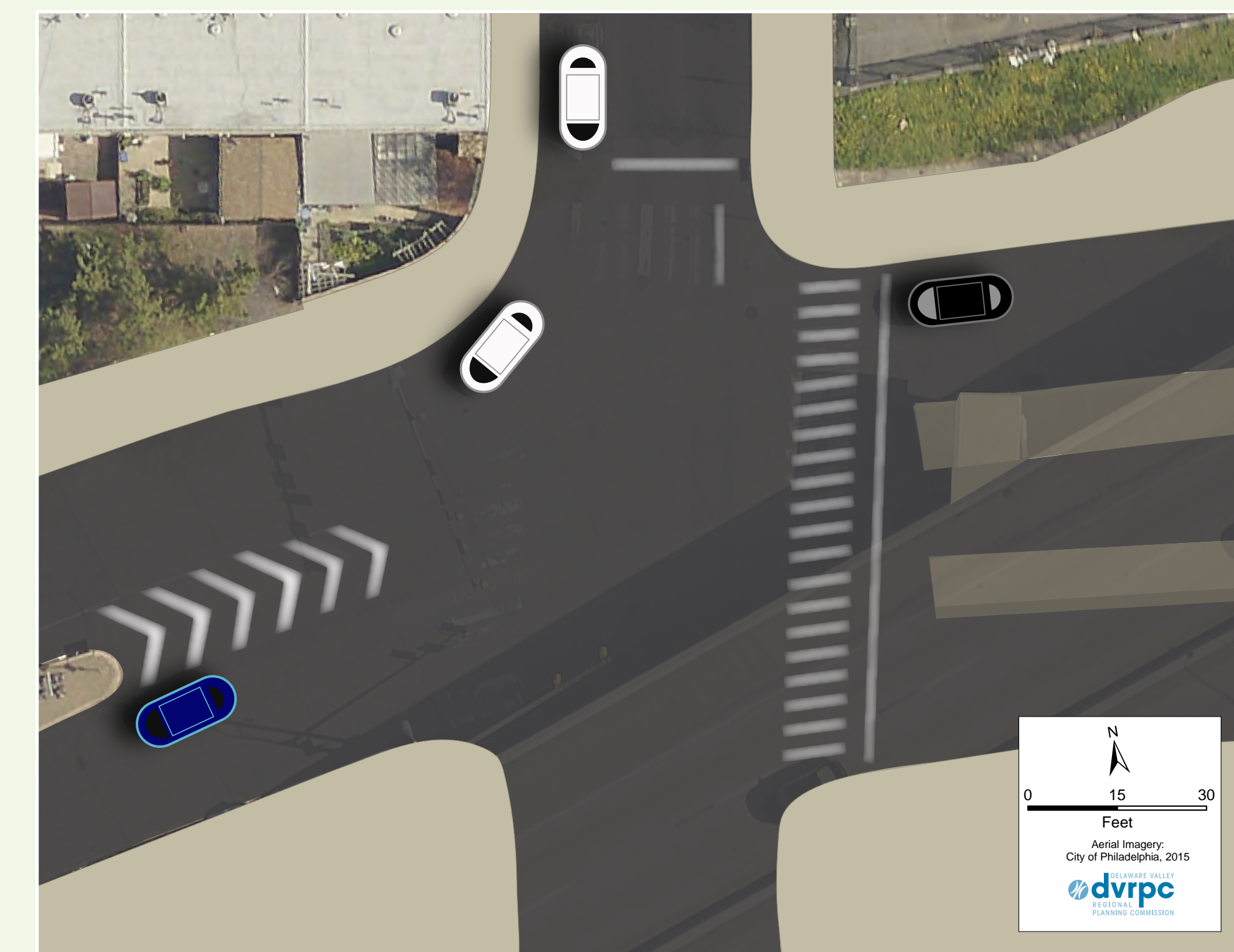
Do you like this proposed improvement?  
你喜歡這個提議的改進嗎？

## Crosswalks and Pedestrian Islands 人行橫道和安全島

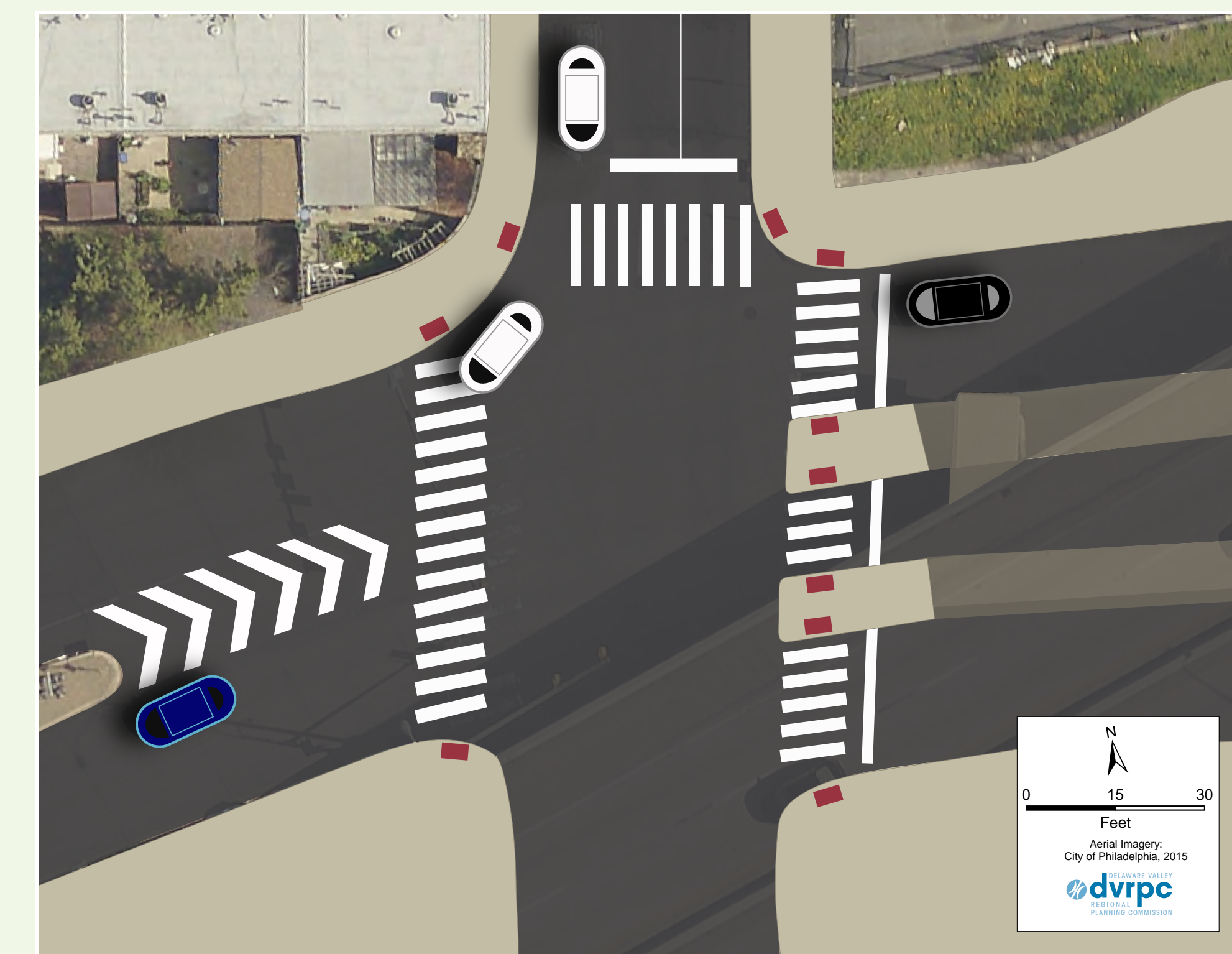
Crosswalks that have faded over time should be repainted and well-maintained. At the longest crossing, pedestrian islands would provide protection and a safe waiting space while crossing the street.

隨時間褪色的人行橫道需要重新粉刷並保持良好維護。在最長的十字路口，安全島可以在過馬路時提供保護和安全的等候區。

### Existing Conditions at Vine St and 8th St Vine街和第8街的目前情況



### Proposed Improvement at Vine St and 8th St Vine街和第8街的擬定優化



Do you like this proposed improvement?  
你喜歡這個提議的改進嗎？



## Rail Park Entrance

### 鐵路公園入口

The small parking lot west of the planned Rail Park site could be transformed into an open space and highly visible entrance to the planned Rail Park. The result would be a stronger connection between Vine Street, Pearl Street, and the planned Rail Park.

可將規劃鐵路公園場址西部的小型停車場改造成規劃鐵路公園的一個開放空間和醒目入口。如此，Vine街、Pearl街和規劃鐵路公園之間可以形成更緊密的聯絡。

## Existing Conditions at Rail Park Terminus 鐵路公園終點站的目前情況



## Proposed Rail Park Entrance 擬建鐵路公園入口



Do you like this proposed improvement?  
你喜歡這個提議的改進嗎？

## Lighting 照明

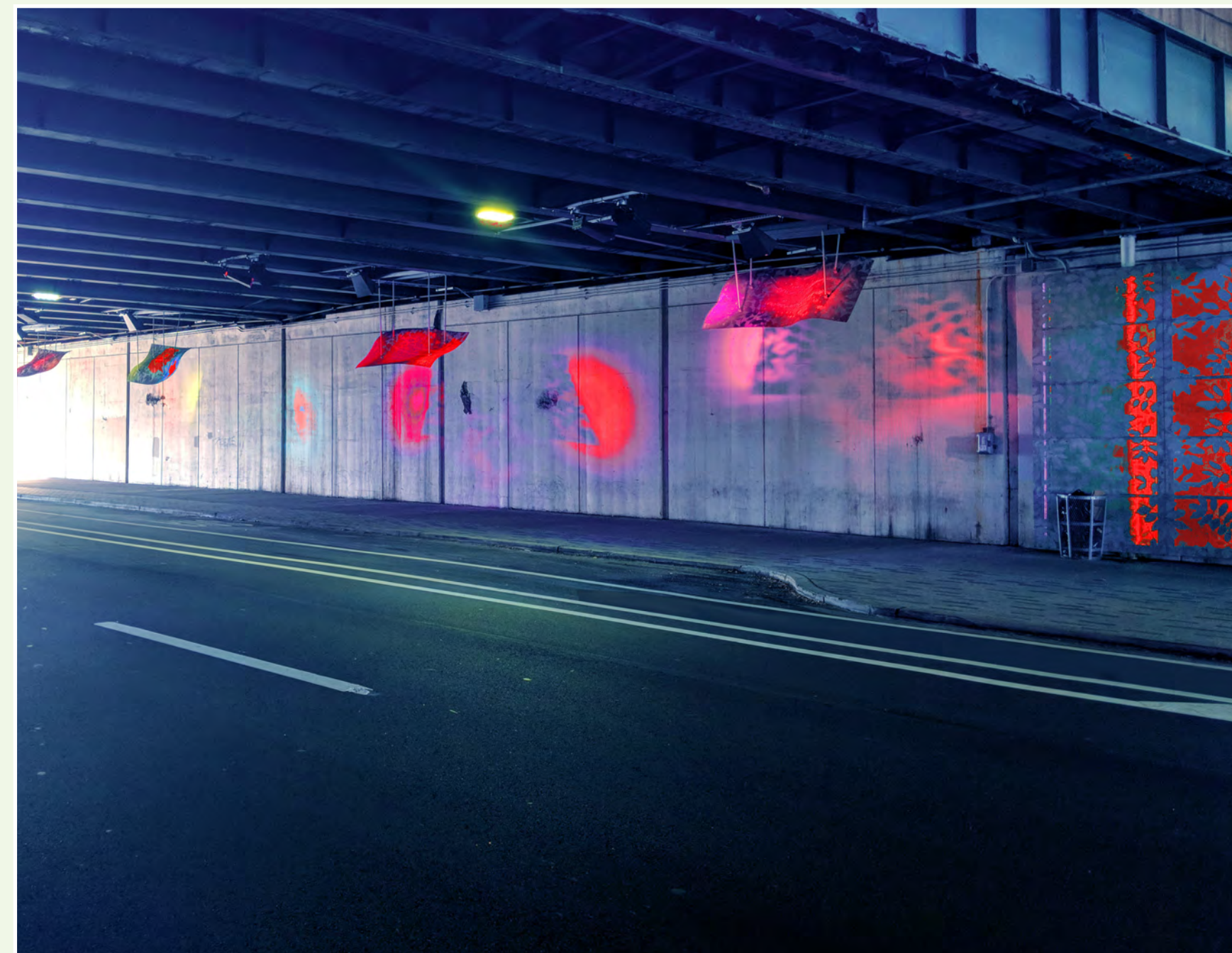
Pedestrian-scale lighting would improve safety and create a sense of place throughout the corridor. Lighting is also needed under the expressway bridge at 8th Street.

行人規格的照明設施可提升安全性，在整個廊道形成一種空間感。第8街快速幹道橋樑下也需要安裝照明設施。

## Proposed Lighting along Vine St Eastbound Vine街（東行方向）的擬建照明設施



## Proposed Lighting under Expressway Bridge at 8th St 第8街快速幹道橋樑下的擬建照明設施



Do you like this proposed improvement?  
你喜歡這個提議的改進嗎？

## Wall Removal 牆體移除

The brick wall lining parts of Vine Street eastbound was built to mitigate expressway noise, but today it acts as a barrier between communities and contributes to an unattractive pedestrian space. Replacing the wall with landscaping would preserve this buffer while beautifying the corridor.

Vine街（東行方向）磚牆牆襯部分的修建目的是消除快速幹道的噪音，但目前，它的作用是充當社區之間的屏障，形成一個無吸引力的行人空間。用景觀替代牆體可以在保留這種緩衝功能的同時美化廊道。

## Existing Conditions on Vine St Eastbound Vine街（東行方向）的目前情況



## Proposed Wall Removal on Vine St Eastbound Vine街（東行方向）的擬定牆體移除



Do you like this proposed improvement?  
你喜歡這個提議的改進嗎？

## Partial Expressway Capping

### 快速幹道部分封頂

A partial capping of the expressway on key pedestrian corridors would create new space for other uses while improving the visual impact and mitigating air and noise pollution.

對關鍵行人廊道上的快速幹道進行部分封頂，將為其他用途建立新空間，同時提升視覺衝擊力，消除空氣和噪音污染。

## Existing Conditions at Vine St and 11th St Vine街和第11街的目前情況



## Proposed Partial Capping at Vine St and 11th St Vine街和第11街的擬建部分封頂



Do you like this proposed improvement?  
你喜歡這個提議的改進嗎？