




DVRPC PPTF Meeting

July 20, 2021



“Start where you are. Use
what you have. Do what you
can.”

—Arthur Ashe

Presentation Purpose and Desired Outcomes

Presentation Purposes:

- Familiarize PPTF members with UPWP process
- Provide a structured yet flexible opportunity for discussion on new project ideas
- Give chance for PPTF members to interact in smaller groups to get to know one another better

Desired Outcomes:

- Strengthened relationships among PPTF members
- Project ideas we can shop around to staff and partners to incorporate into our work



What is the Unified Planning Work Program (UPWP)?



Federal requirement for MPOs that guides the expenditure of federal Planning funds



Addresses the planning priorities within the MPO region

Annual or biannual statement of work



Lists each project's tasks, products, who will perform the work, timeframe, budget and source of \$



UPWP Requirements - Fast Act Planning Factors

1

Economic Vitality

2

Safety

3

Security

4

Accessibility and
Mobility of People and
Freight

5

Environmental and
Energy Sustainability

6

Enhanced Integration
and System
Connectivity

UPWP Requirements - Fast Act Planning Factors

7

**Efficient System
Management and
Operation**

8

**Preservation of
Existing System**

9

**Enhance Travel and
Tourism**

10

**Improve the Resilience and
Reliability of the System and
Reduce/Mitigate Stormwater
Impacts on Surface Transportation**

Must Follow Annual Fed and State Guidance

1

Promote Coordination
across boundaries

2

Foster Performance
based Multimodal
planning approach

3

Develop “Ladders of
Opportunity”

4

Improve Traffic
Operations thru ITS

5

Pursue Congestion
Relief thru TDM

6

Enhance Project
Development/Delivery

Must Follow Annual Fed and State Guidance - continued

7

Improve Primary
Freight Corridors

8

Explore Risk
Management Strategies
for Resilience

9

Support Land
Use/Transportation
Linkages

10

Enhance Opportunities
for Public
Participation

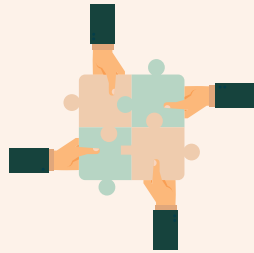
11

Leverage Additional
Funding Sources

12

Promote
Partnerships

UPWP Product Requirements



LRP, TIP, Travel Demand
Model, Performance
Measures Targeting and
Monitoring



CMP, Public Participation
Process, Air Quality
Program, UPWP

Funding



Federal Funds

- Distributed thru PA/NJ DOTS
- Requires Local/State Source Match



Member Gov't Contributions

- Covers items not eligible for fed \$
- Provides match for other Fed \$



Other

- Specific Contracts
- Grants
- Subcontracts to Member Govts: SRHPP, TSP, TCDI, NJ LCD, WPF

Annual Schedule -> repeat!



Outcomes from June 2020 Staff Meetings focused on responding to pandemic and systemic racism in our work - @ 12 new projects

1

Affordable Housing

2

Racial Minority
Mobility Choices Study

3

SEPTA Regional Rail Fare
Equity and Restructure
Analysis

4

Trenton - Air Quality
and Vision Zero Plan

5

Heat Vulnerability
Analysis and Outreach
-Montco

6

Equity in
Transportation Study
with Temple and ULI

Outcomes from June 2020 Staff Meetings focused on responding to pandemic and systemic racism in our work - @ 12 new projects

7

Lending Patterns Analysis

8

Future Supply Chain Logistics Study

9

Diversifying Downtowns for Economic Resilience

10

Online NJT Passenger Surveys => Corridor Employer Outreach

11

Transit Station License Plate survey=> RideScore Update

12

Equity criteria in TIP/Competitive Programs



Thanks for Joining Today!

CREDITS: This presentation template was created by Slidesgo, including icons by Flaticon, infographics & images by Freepik and illustrations by Storyset

A large white puzzle piece graphic is positioned on the left side of the page, partially overlapping the word "connections". The puzzle piece is shaped like a large letter 'C' and has several interlocking tabs and sockets along its inner edge.

connections

2050

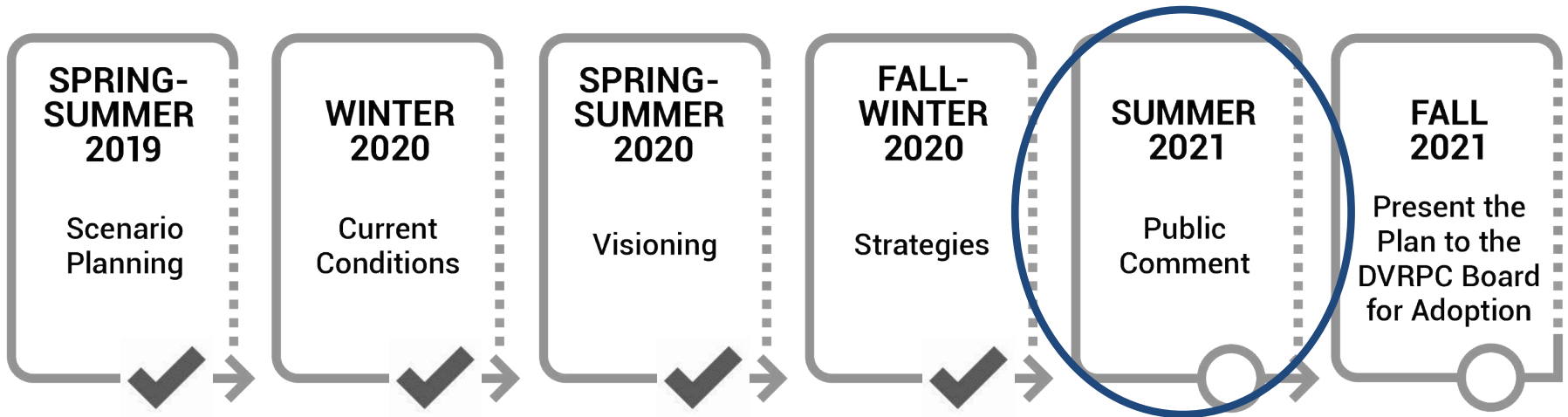
DRAFT

PLAN for GREATER PHILADELPHIA

PPTFd | July 2021



2050 Plan Development





VISION for 2050

The Connections 2050 vision is: An **EQUITABLE, RESILIENT**, and **SUSTAINABLE** Greater Philadelphia region that:

Preserves and protects the natural **ENVIRONMENT**.

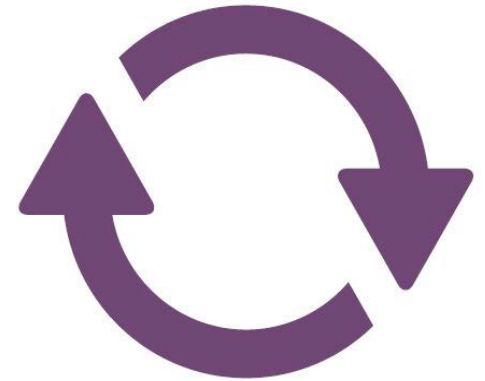
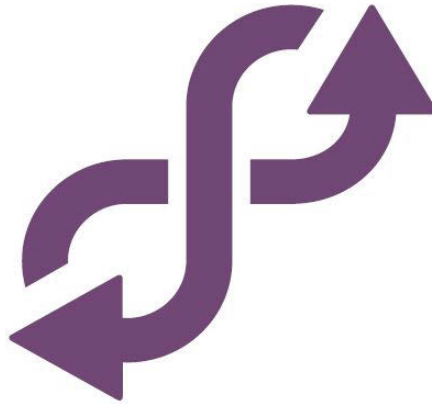
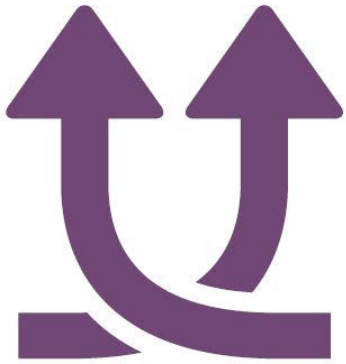
Develops inclusive, healthy, and walkable **COMMUNITIES**.

Grows an innovative **ECONOMY** with broadly shared prosperity.

Maintains a safe, multimodal **TRANSPORTATION NETWORK** that serves everyone and expands access to opportunity.



Overarching Plan Principles



EQUITY

SUSTAINABILITY

RESILIENCY



Preserve and Protect the Natural Environment



Protect Open Space



Net Zero Carbon



Clean Air & Water



Local Food Production



Design with Nature



Develop Inclusive, Healthy, and Walkable Communities



Affordable Housing



Integrated Communities



Schools & Amenities



Vibrant Centers



Historic Preservation



Maintain a Safe, Multimodal Transportation Network that Serves Everyone and Expands Access to Opportunity



Modernize Infrastructure



Vision Zero



Integrated Modes



Mobility & Reliability



(Cyber)Security



Build an Innovative Economy with Broadly Shared Prosperity



Workforce Skills



Green Economy



Small Business



Global Connections



Reduce Poverty



Key Strategies

EQUITY RESILIENCY SUSTAINABILITY

<p>Strategies →</p> <p>ENVIRONMENT</p> <p>Goals →</p>	<p>1 Preserve Open Space and Focus Growth in Centers</p>	<p>2 Reduce Greenhouse Gas Emissions and Improve Air Quality</p>	<p>3 Expand Nature in the Built Environment, Improve Water Quality, and Adapt to Climate Change</p>
<p>Strategies →</p> <p>COMMUNITIES</p> <p>Goals →</p>	<p>4 Uplift Every Voice to Build Inclusive Communities that Develop Without Displacement</p>	<p>5 Design New and Celebrate Historic High-Quality, Walkable, Neighborhoods</p>	<p>6 Increase the Supply and Variety of Affordable Housing Options and Support an Aging Population</p>
<p>Strategies →</p> <p>TRANSPORTATION</p> <p>Goals →</p>	<p>7 Maintain Existing Infrastructure and Facilitate the Equitable Deployment of New Transportation Modes and Technologies</p>	<p>8 Safely Accommodate Transit, Walking, and Biking, and Transportation Network Users of All Abilities</p>	<p>9 Promote Equitable Access to Opportunity</p>
<p>Strategies →</p> <p>ECONOMY</p> <p>Goals →</p>	<p>10 Bolster Connections to the Global Economy and Access to Communications Technologies</p>	<p>11 Expand Key Economic Sectors</p>	<p>12 Support Small Businesses, Entrepreneurship, and Lifelong Learning</p>
<p>Strategies →</p> <p>REGIONAL PLANNING</p> <p>Goals →</p>	<p>13 Be Prepared to Adapt to a Range of Plausible Futures</p> <p>ALL GOALS</p>	<p>14 Decision-making that Supports the Regional Vision</p> <p>ALL GOALS</p>	<p>15 Take Individual & Municipal Actions</p> <p>ALL GOALS</p>



Thank You!

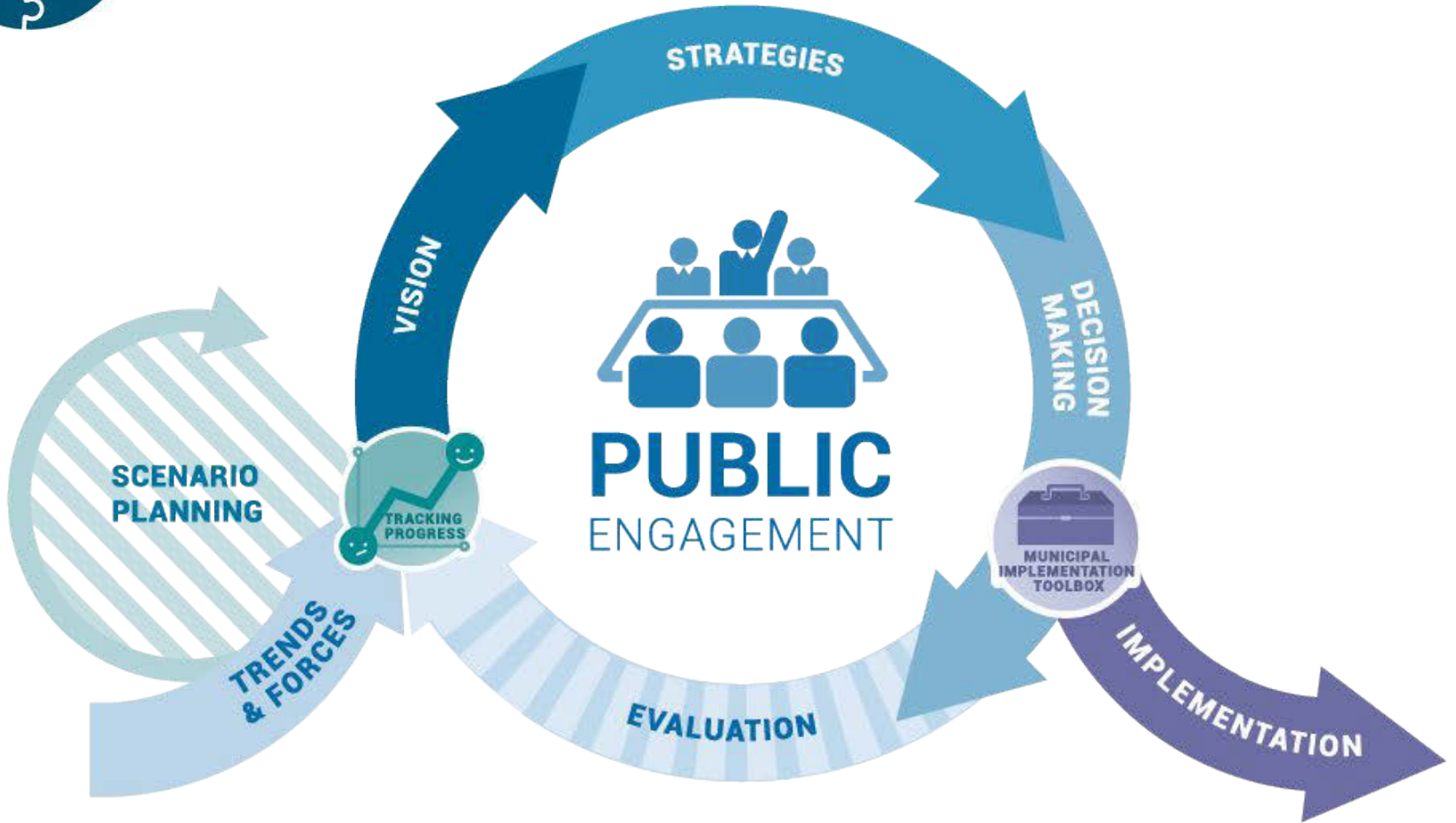
Brett Fusco

bfusco@dvrpc.org



CONNECT WITH US
www.dvrpc.org







Key Strategies

	 EQUITY	 RESILIENCY	 SUSTAINABILITY	
STRATEGIES	ENVIRONMENT	1 Preserve Open Space and Focus Growth in Centers 	2 Reduce Greenhouse Gas Emissions and Improve Air Quality 	3 Expand Nature in the Built Environment, Improve Water Quality, and Adapt to Climate Change
	COMMUNITIES	4 Uplift Every Voice to Build Inclusive Communities that Develop Without Displacement 	5 Design New and Celebrate Historic High-Quality, Walkable, Neighborhoods 	6 Increase the Supply and Variety of Affordable Housing Options and Support an Aging Population
	TRANSPORTATION	7 Maintain Existing Infrastructure and Facilitate the Equitable Deployment of New Transportation Modes and Technologies 	8 Safely Accommodate Transit, Walking, and Biking, and Transportation Network Users of All Abilities 	9 Promote Equitable Access to Opportunity
	ECONOMY	10 Bolster Connections to the Global Economy and Access to Communications Technologies 	11 Expand Key Economic Sectors 	12 Support Small Businesses, Entrepreneurship, and Lifelong Learning
	REGIONAL PLANNING	13 Be Prepared to Adapt to a Range of Plausible Futures ALL GOALS	14 Decision-making that Supports the Regional Vision ALL GOALS	15 Take Individual & Municipal Actions ALL GOALS



EQUITY
 RESILIENCY
 SUSTAINABILITY

<p>Strategies →</p> <p>ENVIRONMENT</p> <p>Goals →</p>	<p>1 Preserve Open Space and Focus Growth in Centers</p>	<p>2 Reduce Greenhouse Gas Emissions and Improve Air Quality</p>	<p>3 Expand Nature in the Built Environment, Improve Water Quality, and Adapt to Climate Change</p>
<p>Strategies →</p> <p>COMMUNITIES</p> <p>Goals →</p>	<p>4 Uplift Every Voice to Build Inclusive Communities that Develop Without Displacement</p>	<p>5 Design New and Celebrate Historic High-Quality, Walkable, Neighborhoods</p>	<p>6 Increase the Supply and Variety of Affordable Housing Options and Support an Aging Population</p>
<p>Strategies →</p> <p>TRANSPORTATION</p> <p>Goals →</p>	<p>7 Maintain Existing Infrastructure and Facilitate the Equitable Deployment of New Transportation Modes and Technologies</p>	<p>8 Safely Accommodate Transit, Walking, and Biking, and Transportation Network Users of All Abilities</p>	<p>9 Promote Equitable Access to Opportunity</p>
<p>Strategies →</p> <p>ECONOMY</p> <p>Goals →</p>	<p>10 Bolster Connections to the Global Economy and Access to Communications Technologies</p>	<p>11 Expand Key Economic Sectors</p>	<p>12 Support Small Businesses, Entrepreneurship, and Lifelong Learning</p>
<p>Strategies →</p> <p>REGIONAL PLANNING</p> <p>Goals →</p>	<p>13 Be Prepared to Adapt to a Range of Plausible Futures</p> <p>ALL GOALS</p>	<p>14 Decision-making that Supports the Regional Vision</p> <p>ALL GOALS</p>	<p>15 Take Individual & Municipal Actions</p> <p>ALL GOALS</p>



VISION for 2050

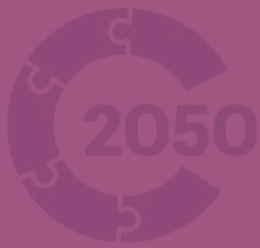
The *Connections 2050* vision is: An **EQUITABLE, RESILIENT,** and **SUSTAINABLE** Greater Philadelphia region that:

Preserves and protects the natural **ENVIRONMENT.**

Develops inclusive, healthy, and walkable **COMMUNITIES.**

Grows an innovative **ECONOMY** with broadly shared prosperity.

Maintains a safe, multimodal **TRANSPORTATION NETWORK** that serves everyone and expands access to opportunity.



VISIONING – What We Heard

“Seamless automated private and public transport to provide access from anywhere to anywhere, to both reduce GHG emissions and to improve access to jobs and work for people in underserved neighborhoods.”

“Legalization of multi-family housing in all areas of the region.”

“An economy that has a goal of making society better, not individuals wealthier.”

“A welcoming community where people from a variety of backgrounds and with a variety of belief systems can live in harmony with mutual respect in an environmentally and economically sustainable way.”

“Black women have [the] same quality access to jobs, housing, healthcare, and education as white men.”

“greater investment in transit and open space.”

All quotes on this page come directly from participants in the Plan's visioning outreach.

