



DELAWARE VALLEY REGIONAL PLANNING COMMISSION

7TH ANNUAL

Celebration

OF REGIONAL

EXCELLENCE

Thursday, May 15, 2008

The Four Seasons Hotel

Philadelphia, PA



**TO THE DELAWARE VALLEY
REGIONAL PLANNING
COMMISSION'S**

Thursday Evening, May 15, 2008

Ballroom of the Four Seasons Hotel

One Logan Square

Philadelphia, PA

FROM THE EXECUTIVE DIRECTOR



BARRY J. SEYMOUR
EXECUTIVE DIRECTOR

On behalf of the Board and staff of the Delaware Valley Regional Planning Commission (DVRPC), I am proud to host our 7th Annual Celebration of Regional Excellence. It is because of your generosity and participation that this event is possible.

We gather each year to renew friendships, to network with our business and government partners, and to recognize the individuals and organizations that have contributed to moving this region toward a vibrant and progressive future. This year we have selected five outstanding honorees: PhillyCarShare; Pennsylvania's Treevitalize Program; Woolwich Township in Gloucester County, NJ; Select Greater Philadelphia; and Governor Ed Rendell.

I am also excited to share a new DVRPC program with you ... *Classic Towns of Greater Philadelphia*, a multi-faceted, multi-media marketing program to promote older suburbs and urban neighborhoods in the region. We will debut a flash video this evening and introduce the first eleven communities to be selected for the program.

We look forward to joining with each of you – our municipal and county leaders, state and federal officials, representatives of the private sector and civic organizations, as well as our other invited guests – in rewarding these outstanding contributions to the region and celebrating our collective achievements.

I am pleased that you are joining with us in marking yet another successful year for DVRPC and the Delaware Valley.

Thank you for your contributions and for your participation this evening.

Sincerely,

A handwritten signature in blue ink, appearing to read 'By Barry J. Seymour'.

Barry J. Seymour
Executive Director

7TH ANNUAL

Celebration

OF REGIONAL
EXCELLENCE

DVRPC

WHO WE ARE . . .

Serving the Greater Philadelphia, Chester, Camden, Trenton area for more than 40 years, DVRPC is the federally designated metropolitan planning organization (MPO) for the Delaware Valley. Working to foster regional cooperation in the nine-county, bi-state area, the Commission has thrived through innovation, responsible leadership, and common goals that are shared by the region's citizens, business leaders and elected representatives.

DVRPC was created in 1965 through a compact signed by the Commonwealth of Pennsylvania and the State of New Jersey. Partnering with federal, state, county and local governments, fostering cooperation, sharing our professional and objective expertise with the private and public sectors, meeting the needs of the public – these are the traits that have guided the Commission throughout our history.



Our mission is to satisfy the broadest constituency possible by fostering cooperation among member governments, private sector organizations and the general public. To do so, we work closely with a variety of groups, including the Pennsylvania and New Jersey departments of transportation, community affairs and environmental protection agencies in these two states, the federal government, and regional transportation providers.

DVRPC's executive leadership has led the agency in a dynamic new direction, enabling the Commission to undertake new tasks and provide a fresh approach to our way of doing business. And, while change will always be a part of our lives, one constant remains – that is our enduring commitment to providing this region with a vision that captures the imaginations and wishes of the citizens of this region.



THE
Evenings
Program

5:30 P.M. RECEPTION *Foyer and Courtyard Terrace*

7:00 P.M. AWARDS CEREMONY *Grand Ballroom*

WELCOME

Barry J. Seymour
Executive Director
Delaware Valley Regional Planning Commission

PRESENTATION OF AWARDS

AWARDEE **Regional Transportation Program of the Year:
PhillyCarShare**

PRESENTING ***The Honorable Joseph M. Hoeffel***
Montgomery County Commissioner

ACCEPTING ***Tanya Seaman***
Executive Director
PhillyCarShare

AWARDEE **Regional Environmental Program of the Year:
Pennsylvania's TreeVitalize Program**

PRESENTING ***The Honorable Carol Aichele***
Chairman
Chester County Commissioners and DVRPC Vice Chair

ACCEPTING ***Dr. James Grace***
Deputy Secretary for Parks and Forestry
Pennsylvania Department of Conservation and Natural Resources

Cindy Adams Dunn
Deputy Secretary for Conservation and Engineering Services
Pennsylvania Department of Conservation and Natural Resources

A W A R D E E **Regional Economic Development Program of the Year:
Select Greater Philadelphia**

P R E S E N T I N G **Jerald R. Cureton, Esq.**
Burlington County Representative and Board Chair

A C C E P T I N G **Thomas G. Morr**
President and CEO
Select Greater Philadelphia

A W A R D E E **Regional Land Use Project of the Year:
Woolwich Township, Gloucester County**

P R E S E N T I N G **Charles E. Romick**
Planning Director
Gloucester County Planning Department and DVRPC Treasurer

A C C E P T I N G **The Honorable Giuseppe “Joe” Chila**
Mayor of Woolwich Township
and Freeholder
Gloucester County Board of Chosen Freeholders

A W A R D E E **Regional Leader of the Year:
The Honorable Ed Rendell, Governor of Pennsylvania**

P R E S E N T I N G **Joanne R. Denworth**
Senior Policy Manager
Pennsylvania Governor’s Policy Office

A C C E P T I N G **The Honorable Allen D. Biehler**
Secretary of Transportation
Pennsylvania Department of Transportation

**INTRODUCTION OF CLASSIC TOWNS
OF GREATER PHILADELPHIA**

**INTRODUCTION OF MATTHEW RUFO,
FIRST RECIPIENT OF JOHN J. COSCIA SCHOLARSHIP
FROM THE UNIVERSITY OF PENNSYLVANIA**

7:45 P.M. DINNER *Grand Ballroom*





2008 Awardees





PRESENTING:

**THE HONORABLE
JOSEPH M. HOEFFEL**
MONTGOMERY COUNTY
COMMISSIONER

ACCEPTING:

TANYA SEAMAN
EXECUTIVE DIRECTOR
PHILLYCARSHARE



REGIONAL TRANSPORTATION
PROGRAM OF THE YEAR

PhillyCarShare, Philadelphia's premier nonprofit car sharing organization, is proud to be an integral part of Philadelphia, offering an affordable and convenient alternative to car ownership; attracting people to live and invest in the City; and creating viable neighborhoods. PhillyCarShare's mission is to maximize the economic, environmental, and social benefits of reduced automobile dependence in the Philadelphia region through community-based car sharing.

PhillyCarShare members report some impressive impacts. As of 2007, PhillyCarShare members reported owning 13,000 fewer cars and driving 42% fewer miles, and members who formerly owned vehicles reported choosing to walk more (40%), ride public transit more (34%), bike more (18%) and take taxis more (13%). Members logged 4 million miles in PhillyCarShare's hybrid vehicles that pollute 90% less than conventional models, and boosted the local economy by \$90 million in 2007, by foregoing car ownership and spending the money locally rather than pouring it into the global auto industry. Plus 72% of members reported choosing where

they live based on PhillyCarShare pod locations, attesting to the impact of PhillyCarShare on neighborhood livability and quality of life.

PhillyCarShare invests heavily in the Philadelphia community, with a Community Improvement Program that helps civic-minded PhillyCarShare members and staff to contribute in their local communities – for block clean-ups, tree plantings, computer training for the elderly, a winter coat drive for the homeless; and with our numerous initiatives and partnerships that promote local businesses, artists and musicians. And in May 2008, PhillyCarShare is introducing Walk Ride Share Philadelphia (walkridesshare.org), a citywide initiative that challenges Philadelphians to give up their cars for a month, in return for a free SEPTA pass, free PhillyCarShare driving, free walking shoes, and a bicycle tune-up. PhillyCarShare makes it easy to live and work in the region without owning a car, thereby greatly reducing the region's carbon footprint and reducing congestion in the city.

17TH ANNUAL
Celebration
OF REGIONAL
EXCELLENCE



PRESENTING:

**THE HONORABLE
CAROL AICHELE**

*CHAIRMAN
CHESTER COUNTY
COMMISSIONERS AND
DVRPC VICE CHAIR*

ACCEPTING:

DR. JAMES GRACE

*DEPUTY SECRETARY FOR
PARKS AND FORESTRY
PENNSYLVANIA DEPARTMENT
OF CONSERVATION AND
NATURAL RESOURCES*

AND

CINDY ADAMS DUNN

*DEPUTY SECRETARY FOR
CONSERVATION AND
ENGINEERING SERVICES
PENNSYLVANIA
DEPARTMENT OF
CONSERVATION AND
NATURAL RESOURCES*

REGIONAL ENVIRONMENTAL
PROGRAM OF THE YEAR



*Pennsylvania's
TreeVitalize Program*

The TreeVitalize Program was launched by the Pennsylvania Department of Conservation and Natural Resources (DCNR) in 2004 to restore lost tree cover in Southeastern Pennsylvania. The program represents an unprecedented collaboration among non-profit organizations, local government, and state and federal agencies, including the Pennsylvania Horticultural Society, Fairmount Park Commission, Morris Arboretum, PA Department of Environmental Protection, and many others throughout Philadelphia and the surrounding counties.

During its initial four-year period, TreeVitalize yielded impressive results:

- 20,100 neighborhood trees planted
- 300 acres of riparian buffer restored (another 50,000 trees)
- Over 3,000 Tree Tenders trained, and 11,000 volunteers engaged.

As recognition for those achievements and the partnerships that made them possible, the TreeVitalize program won the 2007 National Award of Excellence from the Home Depot Foundation and U.S. Conference of Mayors, and a Philadelphia Sustainability Award from the Pennsylvania Environmental Council in 2008.

TreeVitalize has now embarked on its next four-year phase, which includes expansion to other urbanized areas of Pennsylvania, beginning with Pittsburgh earlier this year.

17TH ANNUAL

Celebration
OF REGIONAL
EXCELLENCE



PRESENTING:

JERALD R. CURETON, ESQ.
BURLINGTON COUNTY
REPRESENTATIVE AND
BOARD CHAIR

ACCEPTING:

THOMAS G. MORR
PRESIDENT AND CEO
SELECT GREATER
PHILADELPHIA



REGIONAL ECONOMIC
DEVELOPMENT PROGRAM OF THE YEAR

*Select Greater
Philadelphia*

Select Greater Philadelphia (Select) is dedicated to building the economy of the Greater Philadelphia region by enhancing the area's profile and image in order to attract and retain businesses. Select markets nationally and globally on behalf of Greater Philadelphia to position the region as a profitable business location. Select is a private non-profit organization that serves as the central point of contact for companies considering expansion or location in Greater Philadelphia. It works cooperatively with the 11-county economic development organizations in northern Delaware (New Castle County), southern New Jersey (Burlington, Camden, Gloucester, Mercer and Salem counties) and southeastern Pennsylvania (Bucks, Chester, Delaware, Montgomery and Philadelphia counties).

Select conducts a full service economic development program on behalf of the region, and proactively recruits companies. The organization provides accurate and up-to-date information about the region, connects companies to service providers, operates a comprehensive marketing campaign, organizes domestic and international marketing

missions, facilitates site and incentive analysis, acts as a liaison between company representatives and economic developers in this tri-state area and much more.

With the help of more than 100 local corporations, foundations and individuals, Select has made a positive impact on Greater Philadelphia. To date, it has influenced 35 companies in their decision to locate in the area, bringing almost 2,400 new jobs and a total potential economic impact of approximately \$500 million to the region, increased the number of prospects considering the region as a business destination, built relationships with corporate relocation and site consultants, raised the profile of business opportunities in Greater Philadelphia, improved collaboration among the 11-county economic developers and created an informative website, www.selectgreaterphiladelphia.com.

Select is the economic development arm of the CEO Council for Growth and an affiliate of the Greater Philadelphia Chamber of Commerce.



PRESENTING:

CHARLES E. ROMICK
PLANNING DIRECTOR
GLOUCESTER COUNTY
PLANNING DEPARTMENT
AND DVRPC TREASURER

ACCEPTING:

**THE HONORABLE
GIUSEPPE "JOE" CHILA**
MAYOR
WOOLWICH TOWNSHIP
AND FREEHOLDER
GLOUCESTER COUNTY BOARD
OF CHOSEN FREEHOLDERS

REGIONAL LAND USE PROJECT
OF THE YEAR



*Woolwich Township,
Gloucester County*

Woolwich Township, Gloucester County, is famous for its designation as the "fastest growing municipality" in New Jersey. That title made it clear to the Governing Body of Woolwich Township that something needed to be done to stabilize enormous development pressures. The Township, therefore, began a quest to implement a "Smart Growth Plan" and to seek state approval of that petition.

Now endorsed by the New Jersey State Planning Commission as an excellent example of innovative ways to curb sprawl by channeling new development into discreet growth boundaries, the plan in its entirety is an example of "Smart Growth" principles as encouraged by the State.

One of five New Jersey municipalities chosen as demonstration projects statewide to participate in the Transfer of Development Rights (TDR) process, Woolwich is the first municipality to receive approval from the State Planning Commission for TDR. The TDR process allows property owners in designated preservation areas (sending zones) to sell the development value of their land to interested buyers, who can

then transfer that development potential to designated growth areas (receiving zones). Sending zone property owners receive the development value of their property, which can then continue to be farmed or maintained as open space.

The Woolwich Township designated sending zone contains over 4,000 acres of productive farmland on over 115 tax parcels. The two proposed receiving zones are comprised of 1390 acres located on the US Rt 322 corridor and a smaller 125 acre parcel located in the southern portion of the township. A vibrant commercial main street will be located on the Route 322 corridor, where a total of 3.6 million square feet of commercial space will be located.

All aspects of smart growth initiatives are built into the plan, including the protection of environmentally sensitive areas, storm water management principles, pedestrian and bicycle friendly networks, the preservation of land, the provision of diverse housing styles, the creation of public spaces, the maintenance of rural character in designated portions of the township and a fiscally bright future for the Township of Woolwich.

17TH ANNUAL

Celebration

OF REGIONAL
EXCELLENCE



PRESENTING:

JOANNE R. DENWORTH
SENIOR POLICY MANAGER
PENNSYLVANIA GOVERNOR'S
POLICY OFFICE

ACCEPTING:

**THE HONORABLE
ALLEN D. BIEHLER**
SECRETARY OF
TRANSPORTATION
PENNSYLVANIA
DEPARTMENT OF
TRANSPORTATION



REGIONAL LEADER
OF THE YEAR

*The Honorable Ed Rendell
Governor of Pennsylvania*

Edward G. Rendell, Pennsylvania's 45th Governor, began a second term of office on January 16, 2007. As Governor, Rendell serves as chief executive of the nation's 6th-most-populous state and oversees a \$27.5 billion budget. Governor Rendell's strategic investments have energized Pennsylvania's economy, revitalized communities, improved education, protected the environment and expanded access to health care to all children and affordable prescription drugs for older adults.

Governor Rendell's economic stimulus plan is investing more than \$2.8 billion to create new jobs and revitalize communities. Today, there are more jobs in Pennsylvania than ever before, with a net gain of more than 168,000 jobs since 2003. Pennsylvania now ranks 15th in the nation for job growth, up from 41st at the beginning of Governor Rendell's first term. And, Pennsylvania's unemployment rate has fallen over a full point and continues to be better than, or on par with, the national average.

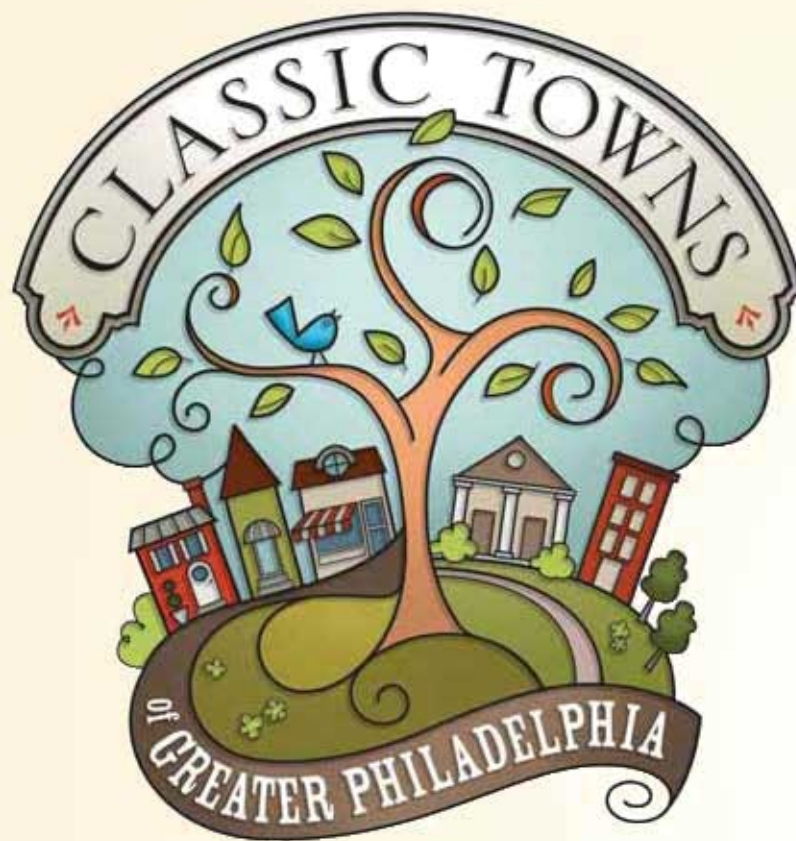
Governor Rendell is also making Pennsylvania a leader in pursuing energy independence – creating jobs in the emerging alternative energy economy while developing effective strategies to reduce dependence on foreign oil and save families money.

In addition, Governor Rendell won passage of the landmark Growing Greener 2 environmental investment package. The \$625 million initiative is cleaning up rivers and streams, improving parks, returning abandoned industrial sites to productive use, protecting open space and preserving farmland.

From 1992 through 1999, Governor Rendell served as the 121st Mayor of the City of Philadelphia. Before serving as Mayor, Rendell was elected district attorney of the City of Philadelphia for two terms from 1978 through 1985.

The Governor, who served as general chair of the Democratic National Committee during the 2000 Presidential election, has always been active in the community through a variety of memberships on boards, and also teaches government and politics courses at the University of Pennsylvania. An Army veteran, the Governor is a graduate of the University of Pennsylvania (B.A. 1965) and Villanova Law School (J.D. 1968).

17TH ANNUAL
Celebration
OF REGIONAL
EXCELLENCE



PROUD TO BE SELECTED

Town Sweet Town

A number of communities in and around Philadelphia
have succeeded in preserving their sense of history,
neighborliness, and main-street charm.

Each has its own special character.

Yet all offer easy access to the city and a quality of livability
uncommon in this age of suburban sprawl.

People are drawn to them to connect with other people,
to relish the moment, to live life uniquely.

The Delaware Valley Regional Planning Commission (DVRPC) has developed a multi-faceted, multi-media marketing program to promote Greater Philadelphia's older suburbs and urban neighborhoods. This initiative, Classic Towns of Greater Philadelphia, is among the first regional marketing efforts of its kind in the country.

It is committed to the growth, revitalization and support of the region's older communities and neighborhoods. The cornerstone of the Classic Towns Program is a marketing strategy designed to benefit the Greater Philadelphia region's older communities and neighborhoods. By identifying needs, developing effective messages, and creating strategies for targeted distribution, the Classic Towns initiative will help communities to brand themselves as attractive places to live, work, shop and play!

**WE ARE PLEASED
TO ANNOUNCE OUR
2008 CLASSIC
TOWNS OF GREATER
PHILADELPHIA**

**BOROUGH OF AMBLER
BOROUGH OF BRISTOL
BOROUGH OF COLLINGSWOOD
BOROUGH OF DOYLESTOWN
BOROUGH OF HADDON HEIGHTS
BOROUGH OF LANSDOWNE
BOROUGH OF MEDIA
BOROUGH OF RIVERTON
BOROUGH OF WEST CHESTER
CITY OF PHILADELPHIA, MANAYUNK
CITY OF PHILADELPHIA, OVERBROOK FARMS**



2008

Levels OF
Sponsorship

PLATINUM

DELAWARE RIVER PORT AUTHORITY

GOLD

BALLARD SPAHR

PENNONI ASSOCIATES, INC.

URBAN ENGINEERS, INC.

SILVER

ADVANCED AUDIO VISUAL

AMERICAN COLLEGE OF PHYSICIANS

BAE SYSTEMS ADR

BOARDMAN HAMILTON COMPANY

CSX

DMJM HARRIS

JEFFERSON UNIVERSITY HOSPITALS

MCCORMICK TAYLOR

MICHAEL BAKER JR., INC.

NORTHMARQ ADVISORS

PB AMERICAS, INC.

PENNSYLVANIA HOUSING FINANCE AGENCY

SAUL EWING, LLP

STANTEC CONSULTING SERVICES, INC.

URS CORPORATION

WALLACE, ROBERTS & TODD

PEWTER

BEN FRANKLIN TECHNOLOGY PARTNERS OF
SOUTHEASTERN PENNSYLVANIA

COMMUTER CHECK SERVICES CORPORATION

DELTA AIRPORT CONSULTANTS, INC.

DEWBERRY

HDR ENGINEERING

HNTB CORPORATION

MCPAHON ASSOCIATES, INC.

PHILADELPHIA REGIONAL PORT AUTHORITY

PORT AUTHORITY TRANSIT CORPORATION (PATCO)

RAYMOND & COLEMAN, LLP

SMS RAIL SERVICES

SOUTHEASTERN PENNSYLVANIA

TRANSPORTATION AUTHORITY (SEPTA)

STUDLEY COMMERCIAL REAL ESTATE ADVISORS

TRAFFIC CLUB OF PHILADELPHIA



Friends at the DVRPC, your leadership and hard work for our region is greatly appreciated. Congratulations to this year's well deserving Celebration of Regional Excellence honorees.

Governor Ed Rendell, Chairman

Jeff Nash, Vice Chairman

John J. Matheussen, CEO, DRPA & President of PATCO



(856) 968-2000 or visit **www.drpa.org**

- ▶ Benjamin Franklin Bridge
- ▶ Walt Whitman Bridge
- ▶ Commodore Barry Bridge
- ▶ Betsy Ross Bridge
- ▶ PATCO
- ▶ RiverLink Ferry System
- ▶ Philadelphia Cruise Terminal

Ballard Spahr

Ballard Spahr
Congratulates the
DVRPC's honorees during their
2008 Celebration of
Regional Excellence

Ballard Spahr Andrews & Ingersoll, LLP
1735 Market Street • 51st Floor
Philadelphia, PA 19103-7599
215.665.8500

Baltimore Bethesda Denver Las Vegas Los Angeles Philadelphia
Phoenix Salt Lake City Voorhees, NJ Washington, DC Wilmington, DE

www.ballardspahr.com

Congratulations to the 2008 Regional Excellence Honorees



**PROVIDING ENGINEERING
SERVICES SINCE 1966**



PENNONI ASSOCIATES INC.
CONSULTING ENGINEERS

**CIVIL/MUNICIPAL
SITE DESIGN
TRANSPORTATION
BRIDGE & HIGHWAY DESIGN
UNDERWATER INSPECTION
LANDSCAPE ARCHITECTURE
WATER & WASTEWATER
INSPECTION & TESTING
ENVIRONMENTAL
LAND SURVEYING
MEP ENGINEERING
GEOTECHNICAL
STRUCTURAL**



3001 Market Street, Philadelphia, PA 19104 | Tel: 215-222-3000 | Fax: 215-222-0384

www.pennoni.com



*Congratulations to the
Recipients of the*
**Delaware Valley Regional
Planning Commission's**

"7th Annual Celebration of Regional Excellence"



- Transportation
- Facilities and Buildings
- Construction Services
- Environmental Services
- Planning / GIS
- Program Management

530 Walnut Street, 14th Floor
Philadelphia, PA 19106
voice: 215.922.8080
fax: 215.922.8082

Additional Locations:
*Pennsylvania, *New Jersey, *Delaware
*New York, Connecticut, *Maryland

*For employment opportunities
please visit our website
www.urbanengineers.com*



Founded 1960 | Employee Owned | *ISO 9001:2000 Certified

ADVANCED AV



Advanced AV is pleased to support the DVRPC.

Advanced AV is an industry-certified integrator of professional AV systems. Since 1991, we've set the standard for engineering-led AV systems integration and have remained on the cutting-edge of emerging technologies such as rich media, digital signage, and streaming video. Hundreds of satisfied clients use our value-added solutions in their boardrooms, conference centers, classrooms, auditoriums, and scores of other applications.

When you need a provider for your mission-critical AV project or require service and support, look no further than Advanced AV. We turn your concepts and ideas into exciting reality.

Plasma & LCD Displays
Projectors
Digital Signage
Videoconferencing
Integrated AV Systems
Streaming Video

System Design
Installation
Service



Ask about Advanced Advantage,
the industry's leading service package.

877.696.7700 • AdvancedAV.com

ACP

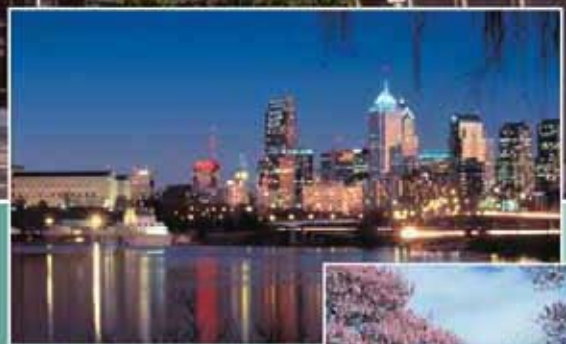
AMERICAN COLLEGE OF PHYSICIANS
INTERNAL MEDICINE | Doctors for Adults



The American College of Physicians

Congratulates

*all honorees of DVRPC's 7th Annual
Celebration of Regional Excellence Dinner.
Thank you all for making Philadelphia a great city
that we're proud to call home!*





BAE SYSTEMS is putting DVRPC on the map with the products and solutions to solve your geospatial needs.

BAE SYSTEMS is a solution-driven company, dedicated to adapting the evolving world of geospatial technologies to your specific needs. We have provided states, counties, municipalities, regional consortiums, PAMAP, PennDOT, NJDOT, NJOIT, PA Turnpike Commission, DVRPC and other Pennsylvania and New Jersey customers with geospatial services ranging from planimetric & topographic mapping, digital orthophotography, LiDAR processing and Geospatial Systems Engineering & GIS design to E-911 & infrastructure mapping.

We can help you put the pieces in place to solve your geospatial needs.

Digital Photogrammetric Mapping and Production Services

BAE SYSTEMS has experience with all facets of digital photogrammetric mapping and production including:

- Digital Imagery & LiDAR processing
- Analytical triangulation
- Digital elevation/terrain models
- Planimetric and topographic mapping
- Digital orthophotography
- GIS database design and implementation

Mapping Program Management Services

Many different agencies, states, counties, municipalities, and local governments have relied on BAE SYSTEMS to provide professional program management services. Our expertise in this industry gives a unique vision for your mapping project. We are in the business of providing the critical geospatial solutions you are looking for.

GIS Services

Your Geographic Information System is a critical component of your information management strategy. BAE SYSTEMS has experience with designing, building and implementing GIS data models that are tailored to meet your specific business processes and application requirements. Our capabilities include GIS systems integration, data interoperability capabilities and both server and web-based applications.

With the challenging conditions surrounding our world, customers are demanding solutions that provide reliable access to accurate geospatial data. BAE SYSTEMS supports these requirements with comprehensive, end-to-end solutions.

For more information contact:

Andrew Pickford
Regional Manager
856-793-4316 - office
215-499-0983 - cell
andrew.pickford@baesystems.com

BAE SYSTEMS

Experience / Confidence / Stability / Service

Boardman Hamilton Company

We're in the neighborhood!



For 55 years, Boardman-Hamilton Company has provided insurance protection and advice to businesses of all sizes throughout the Delaware Valley. As one of the oldest privately-owned insurance brokerage firms in the Philadelphia area, we have grown along with our clients who include architects, engineers, contractors, schools, restaurants, condominium associations, non-profit organizations, day care centers, manufactures and almost every other type of business activity. The professional staff and support personnel at Boardman-Hamilton are dedicated to treating you as a valued customer and stand ready to serve your insurance needs.

Business / Auto / Home / Life

8459 RIDGE AVENUE
PHILADELPHIA, PA 19128
PHONE: 215.487.3600
FAX: 215.487.0424

CALL US FOR A COMPETITIVE QUOTE OR VISIT
OUR WEBSITE, WWW.BOARDMAN-HAMILTON.COM



Insurance Brokers

CSX

TRANSPORTATION

www.csx.com



Transit/Rail



Highways/
Bridges



Planning



Energy and
Power



Marine



Program
Management



Design and
Construct

DMJM Harris is proud to be
a Silver Sponsor for the


Delaware Valley Regional Planning Commission's 7th Annual Celebration of Regional Excellence

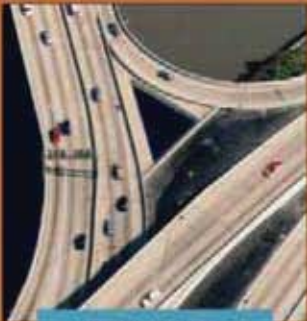
260 South Broad Street, Suite 1500
Philadelphia, PA 19102
215.735.0832



We are pleased to support the *Delaware Valley
Regional Planning Commission* on the occasion
of its 7th Annual Celebration of Regional Excellence Dinner.



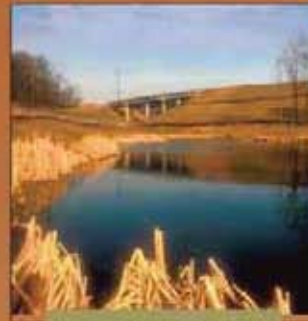
 McCormick Taylor
congratulates the DVRPC's honorees
during their 2008 Celebration of
Regional Excellence.



Engineering



Planning



Environmental



Communications &
Management

■ OUR PLANNING SERVICES INCLUDE

- Community & Regional Comprehensive Planning
- Corridor Level Transportation/Land Use Planning
- Transit-Oriented Development Planning
- Landscape Architecture/Urban Design
- Visioning & Community Consensus Building
- Park & Recreation Planning & Design
- Hazard Mitigation Planning

McCormick
Engineers & Planners
Since 1946 **Taylor**

Two Commerce Square
2001 Market Street, 10th Floor
Philadelphia, PA 19103
Phone: 215-592-4200
Fax: 215-592-0682

11 offices in PA, NJ, MD, DE, VA & OH

www.mccormicktaylor.com

■ committed to achieving
excellence ...



Michael Baker Jr., Inc. is proud to be a Silver Sponsor for The Delaware Valley Regional Planning Commission's 7th Annual Celebration of Regional Excellence Dinner.

Baker commends the DVRPC for their ongoing efforts in providing comprehensive, coordinated planning for growth and development of the region. Baker is dedicated in helping DVRPC meet its goals by providing complete life cycle services for civil and transportation infrastructure projects.

Congratulations to

DVRPC's 2008 Regional
Excellence Honorees

Baker

Philadelphia, PA
215-568-0539

Horsham, PA
215-444-0888

Princeton, NJ
609-734-7900

www.mbakercorp.com

[nimblity]

The ability to quickly offer customized commercial real estate solutions that precisely match the unique needs of our customers. Defined by a high level of personalized service. Not oversized, overpriced or slow to react to change.



Property Management • Brokerage • Construction • Capital Markets • Corporate Solutions • Healthcare

The new NorthMarq combines NorthMarq Capital with the former Brokerage, Property Management, Construction, Corporate Solutions and Healthcare businesses of United Properties.

northmarq.com

uproperties.com

Congratulations!

PB congratulates
all the honorees
of the
Delaware Valley
Regional Planning
Commission's
7th Annual Celebration
of Regional Excellence.



For career opportunities in program management, infrastructure planning, design and construction phase services please visit www.pbworld.com

PB PARSONS
BRINCKERHOFF



HOUSING MATTERS.
People are in the balance.



www.phfa.org

Edward G. Rendell, Governor • Brian A. Hudson, Sr., Executive Director

The law firm of

Saul Ewing LLP is

Proud to Salute

the Delaware Valley

Regional Planning

Commission

and the extraordinary

service it renders

to our Region.

Timothy J. Carson

Partner

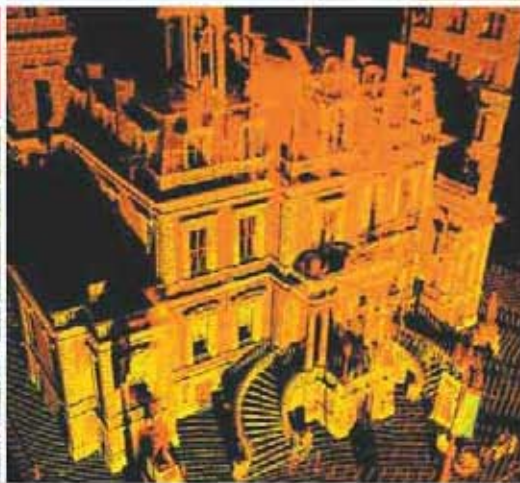
Centre Square West

1500 Market Street, 38th Fl.

Philadelphia, PA 19102

215.972.7777 | www.saul.com

**SAUL
EWING** LLP



One Team. Infinite Solutions.

Stantec provides professional design and consulting services in planning, engineering, architecture, surveying, landscape architecture, transportation, and project management.

At Stantec we are passionate about the design quality of the built environment, and create designs that are timeless, intelligent, and sustainable. We offer a multidisciplinary team of experienced professionals to provide creative and integrated solutions for our clients.

Congratulations to this year's winners!

PhillyCarShare, Woolwich Township,
Pennsylvania's TreeVitalize Program,
Select Greater Philadelphia and Governor Ed Rendell.

In the Delaware Valley, call (215) 545-7525.



stantec.com

Stantec

planning | surveying | engineering | visualization

URS

Congratulations

to all of the

2008

Delaware Valley Regional Planning Commission

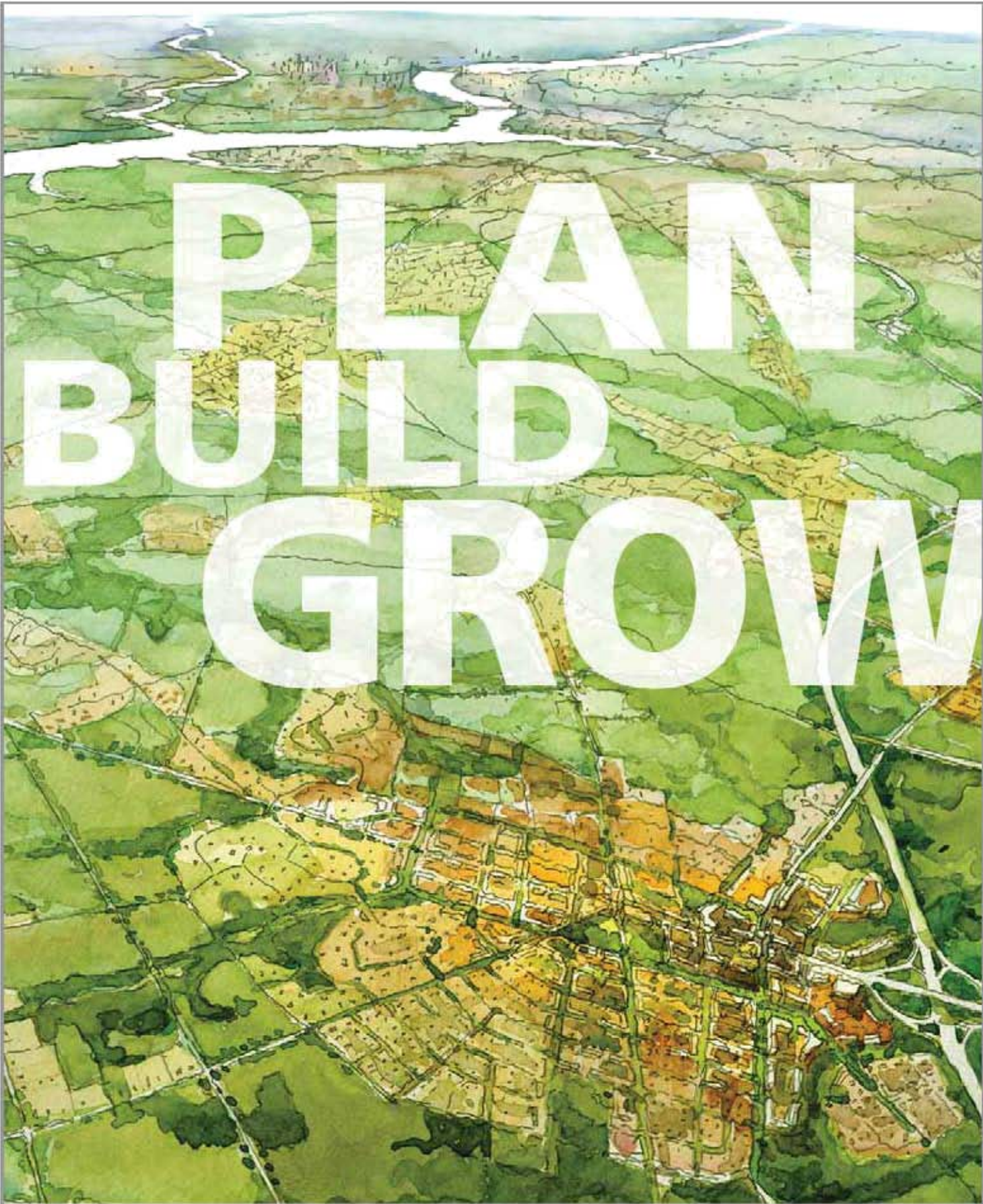
Awards Honorees!

335 Commerce Drive, Suite 300
Fort Washington, PA 19034
215.390.2100



***A full-service engineering and environmental firm,
meeting clients' needs for over 100 years.***

www.urscorp.com



Wallace Roberts & Todd
Planning & Design

wrtdesign.com

BEN FRANKLIN TECHNOLOGY PARTNERS OF SOUTHEASTERN PENNSYLVANIA

Southeastern PA's Economic Development Organization focusing on our Technology Economy

Provides entrepreneurs and established businesses the Capital, Knowledge and Networks they need to compete in the global marketplace

- Provided more than \$130 million to over 1,600 regional enterprises since 1982
- Funded more than 195 companies to solve product development and commercialization challenges by working with members in our partner network over the past 5 years
- Catalyzed and partnered across the region and statewide to strengthen our innovation infrastructure:
 - The Nanotechnology Institute™ (NTI)
 - The Mid-Atlantic Nanotechnology Alliance (MANA™)
 - The Minority Angel Investor Network
 - Emerald Stage2 Venture Fund



Ben Franklin
Technology Partners
Southeastern Pennsylvania
25TH ANNIVERSARY

www.sep.benfranklin.org



The Best Way
to Work and Back.™



Congratulations to the
2008 honorees and their
regional contributions
to the Delaware Valley.

Commuter Check Benefit Solutions
is proud partner of the DVRPC
TransitChek Program.



www.commutercheck.com

Commuter Check is the leading solution for Section 132(f)
Commuter Benefits. Powered by Accor Services USA,
the leading provider of commuter benefits nationwide.



aviation enthusiasts for as long as we can remember . . .

At Delta Airport Consultants, Inc., we are committed to serving the aviation community in the Delaware Valley Region. We offer solutions for your needs in:

- Engineering • Construction Administration • Planning • Environmental Assessments •

3540 North Progress Avenue, Suite 102
Harrisburg, Pennsylvania 17110
(717) 652-8700
www.deltaairport.com



**DELTA AIRPORT
CONSULTANTS, INC.**

Congratulations!

Governor Ed Rendell

PhillyCarShare

Woolwich Township, Gloucester County

Pennsylvania's Tree Vitalize Program

Select Greater Philadelphia



Dewberry[®]

www.dewberry.com

- Transportation
- Land Development
- Survey
- Traffic Engineering
- Environmental Services
- Municipal Infrastructure

Bloomfield, NJ
973 338 9100

Parsippany, NJ
973 739 9400

Mount Laurel, NJ
856 802 0843

Trenton, NJ
609 278 4270

Carlisle, PA
717 240 0344

INTELLIGENT transportation solutions

Transportation

Design & Construction
Management

Environmental Planning

Security/Vulnerability
Assessments

Geotechnical



ONE COMPANY | *Many Solutions™*

1016 W. 9th Avenue, Suite 110
King of Prussia, PA 19406

484.612.1100
www.hdrinc.com

HNTB

HNTB Corporation
The HNTB Companies
Engineers Architects Planners

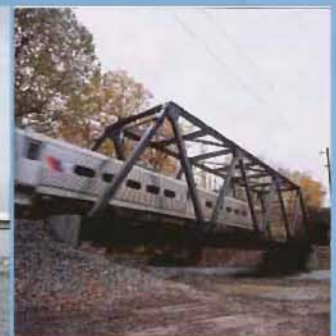
Wayne Plaza I, Suite 400
145 Route 46 West
Wayne, NJ 07470-6830

Tel: (973)237-1650
Fax: (973)237-9185

44 Euclid Street
Woodbury, NJ 08096

Tel: (856)853-8522
Fax: (856)853-8552

www.hntb.com



Services Areas

- Aviation
- Bridge and Tunnels
- Highways / Roadways
- Construction and Program Management
- Environmental
- Rail / Transit
- Urban Design and Planning



MCMMAHON

TRANSPORTATION ENGINEERS & PLANNERS

www.mcmtrans.com

Proud to sponsor the
DVRPC 7th Annual Celebration
of Regional Excellence!

A full service transportation engineering firm specializing in:

Traffic Engineering

Water Resources

Transportation Planning

Highway Safety

Highways

Data Collection

Transit

Land Surveying

ITS/Signals

GIS

Structures

Fort Washington, PA
215.283.9444

Exton, PA
610.594.9995

Camp Hill, PA
717.975.0295

Yardville, NJ
609.585.5745

Bowie, MD
301.464.3955

*The Philadelphia Regional Port Authority is pleased to participate
in the Delaware Valley Regional Planning Commission's
7th Annual Celebration of Regional Excellence*

*We salute DVRPC and its 2008 Honorees
for all their efforts and contributions*

In making our regional transportation system cleaner and more efficient



Philadelphia Regional Port Authority
Managing Pennsylvania's International Seaport Since 1990
Deeper water and more capacity are on the way!
To learn more, visit us at www.philaport.com



TAKE THE TRAIN.
It's the **quick** and **easy**
way to go to
work, shopping,
dining, FUN!



(856) 772-6900

www.ridepatco.org

(215) 922-4600

Raymond & Coleman, LLP

is Pleased to Support The Delaware Valley Regional Planning Commission

RAYMOND & COLEMAN, LLP

THOMAS J. COLEMAN, III, ESQUIRE
AND STEPHEN G. RAYMOND, ESQUIRE
NEW JERSEY COUNSEL

RAYMOND & COLEMAN, LLP IS A FULL SERVICE LAW FIRM THAT OFFERS ITS CLIENTS CREATIVE SOLUTIONS TO TODAY'S COMPLEX LEGAL ISSUES WHEN RESULTS MATTER. WE OFFER COST EFFECTIVE PROFESSIONAL EXPERIENCE.

SPECIALIZING IN CORPORATE, REAL ESTATE, PERSONAL INJURY, CRIMINAL DEFENSE, ESTATE PLANNING AND COMMERCIAL/GENERAL LITIGATION MATTERS.

RAYMOND & COLEMAN, LLP / 325 NEW ALBANY ROAD / MOORESTOWN, NEW JERSEY 08057
TEL: (856) 222-0100 / FAX: (856) 222-0411 / EMAIL: TOMCOLEMAN@RCLAWNJ.COM



PROUDLY SERVING INDUSTRY

*IN THE DELAWARE VALLEY
SINCE 1994*

www.smslines.com

CONGRATULATIONS TO THE 2008 HONOREES!



We are honored to be the
**Delaware Valley Regional
Planning Commission's**
new real estate advisor.

We wish **Barry Seymour** and
Don Shanis years of continued
excellence at DVRPC.

Timothy B. Monahan, Corporate Managing Director
Kenneth D. Clyman, Corporate Managing Director
Patrick W. McGrath, Assistant Director

PHILADELPHIA
215.563.4000 | www.studley.com

Studley
Commercial Real Estate Advisors



THE TRAFFIC CLUB OF PHILADELPHIA

*Salutes DVRPC, Award Winners, and Attendees
at the 7th Annual Celebration of Regional Excellence!*

The Traffic Club of Philadelphia - Promoting Transportation and Logistics in the Delaware Valley Since 1908!

The Traffic Club welcomes persons of all backgrounds who share a common interest in transportation.
For information, upcoming events, and membership applications, visit: www.tcp Philadelphia.org

**BOARD MEMBERS
AND ALTERNATES**

OFFICERS

Chairman
Jerald R. Cureton

Vice Chairman
Carol Aichele

Secretary
James Ritzman

Treasurer
Charles E. Romick

**PENNSYLVANIA GOVERNOR'S
APPOINTEE***

David G. Mandelbaum
Ballard Spahr Andrews & Ingersoll, LLP

**PENNSYLVANIA DEPARTMENT
OF TRANSPORTATION***

Allen D. Biehler
Secretary of Transportation

James Ritzman
Deputy Secretary for Planning

Robert C. Hannigan
Metropolitan Manager

**PENNSYLVANIA GOVERNOR'S
POLICY OFFICE***

Joanne R. Denworth
Senior Policy Manager,
Governor's Southeastern
Regional Office

Kenneth Klothen
Deputy Secretary of
Community Affairs and Development

CITY OF CHESTER

Wendell N. Butler
Mayor

William Payne
Director
Division of Planning

CITY OF PHILADELPHIA*

Michael Nutter
Mayor

Rina Cutler
Deputy Mayor
Office of Transportation

BUCKS COUNTY

Charles H. Martin
Bucks County Commissioner

Lynn Bush
Executive Director
Bucks County Planning Commission

CHESTER COUNTY*

Carol Aichele
Chairman
Chester County Commissioners

Ronald T. Bailey
Executive Director
Chester County Planning Commission

DELAWARE COUNTY

Andy Lewis
Council Member
Delaware County Council

John E. Pickett
Director
Delaware County Planning Department

MONTGOMERY COUNTY

Joseph M. Hoeffel
Montgomery County Commissioner

James W. Maza
Deputy Chief Operating Officer

Kenneth Hughes
Director
Montgomery County Planning
Commission

**NEW JERSEY GOVERNOR'S
APPOINTEE***

James A. Carey, Jr.
Director
New Jersey Governor's Authorities Unit

Sonia Frontera
Assistant Counsel
New Jersey Governor's Authorities Unit

**NEW JERSEY DEPARTMENT
OF TRANSPORTATION***

Kris Kolluri
Commissioner

David A. Kuhn
Executive Director
Capital Investment Strategies

Thomas Wospil
Director
Capital Investment Planning

**NEW JERSEY DEPARTMENT
OF COMMUNITY AFFAIRS***

Joseph V. Doria, Jr.
Commissioner

Joyce Paul
Executive Assistant
to the Assistant Commissioner

CITY OF CAMDEN*

Gwendolyn A. Faison
Mayor

Edward Williams
Assistant Director of
Development & Planning

CITY OF TRENTON

Douglas H. Palmer
Mayor

Andrew Carten
Director
Division of Planning

BURLINGTON COUNTY*

Jerald R. Cureton, Esq.
Cureton, Clark

Carol Ann Thomas
Principal Transportation Planner

CAMDEN COUNTY

Louis Cappelli, Jr., Esq.
Camden County Freeholder

Edward Fox
Director of Smart Growth
Camden County Improvement Authority

GLOUCESTER COUNTY

Charles E. Romick
Planning Director
Gloucester County Planning Department

Giuseppe (Joe) Chila
Gloucester County Freeholder

Joseph A. Brigandi, Jr.
Gloucester County Freeholder

MERCER COUNTY

Brian M. Hughes
County Executive

Donna Lewis
Director
Mercer County Planning Division

Matthew Lawson
Principal Planner
Mercer County Planning Division

**PARTICIPATORY
NON-VOTING MEMBERS
AND ALTERNATES**

**U.S. DEPARTMENT OF
TRANSPORTATION FEDERAL
HIGHWAY ADMINISTRATION**

PENNSYLVANIA DIVISION

James A. Cheatham
Division Administrator

Matt Smoker
Planning Program Manager

NEW JERSEY DIVISION

Dennis L. Merida
Division Administrator

Lawrence Cullari, AICP
Director of Planning and Research

**U.S. DEPARTMENT OF
HOUSING AND URBAN
DEVELOPMENT, REGION III**

John G. Bravacos
Regional Director

Elvis Solivan
Special Assistant
to the Regional Director

**SOUTHEASTERN
PENNSYLVANIA
TRANSPORTATION AUTHORITY**

Joseph M. Casey
General Manager

David Fogel
Director of Long-Range Planning

**NEW JERSEY TRANSIT
CORPORATION**

Pippa Woods
Capital Planning

Richard Roberts
Chief Planner

**DELAWARE RIVER
PORT AUTHORITY**

John J. Matheussen
Chief Executive Officer

Linda Hayes
Manager
Capital Grants Government Relations

**PORT AUTHORITY TRANSIT
CORPORATION**

Robert A. Box
General Manager

Cheryl Spicer
Assistant General Manager

**FEDERAL TRANSIT
ADMINISTRATION, REGION III**

Letitia A. Thompson
Administrator

Michele A. Destra
Director
Office of Planning & Program
Development

Keith Lynch
Community Planner

**U.S. ENVIRONMENTAL
PROTECTION AGENCY,
REGION III**

Donald Welsh
Regional Administrator

Megan Dougherty
Pennsylvania State Liaison Officer

**U.S. ENVIRONMENTAL
PROTECTION AGENCY,
REGION II**

Alan J. Steinberg
Regional Administrator

Michael Moltzen
Mobile Source Team Leader

**PENNSYLVANIA DEPARTMENT
OF ENVIRONMENTAL
PROTECTION**

Joseph A. Feola
Regional Director
Southeast Regional Office

John Kennedy
Assistant Director

**NEW JERSEY DEPARTMENT
OF ENVIRONMENTAL
PROTECTION**

Lisa Jackson
Commissioner

William Purdie
Director
Office of Policy, Planning & Science

**NEW JERSEY OFFICE
OF SMART GROWTH**

Benjamin Spinelli
Executive Director

James Requa
Department of Community Affairs,
Office of Smart Growth

**PENNSYLVANIA DEPARTMENT
OF COMMUNITY AND
ECONOMIC DEVELOPMENT**

Toni Crawford-Major
Director

**REGIONAL CITIZENS
COMMITTEE**

Warren Strumpfer
Chairman



SUSTAINABLE
FORESTRY
INITIATIVE
CERTIFIED
SOURCING

FIBER USED IN THIS PRODUCT LINE
MEETS THE SOURCING REQUIREMENTS
OF THE SFI PROGRAM

WWW.SFIPROGRAM.ORG

CHAIN OF CUSTODY #BV-SFICOC-200908-R



**Delaware Valley
Regional Planning
Commission**

190 North Independence Mall West

Philadelphia, PA 19106

Phone 215.592.1800

Fax 215.592.9125

www.dvrpc.org