

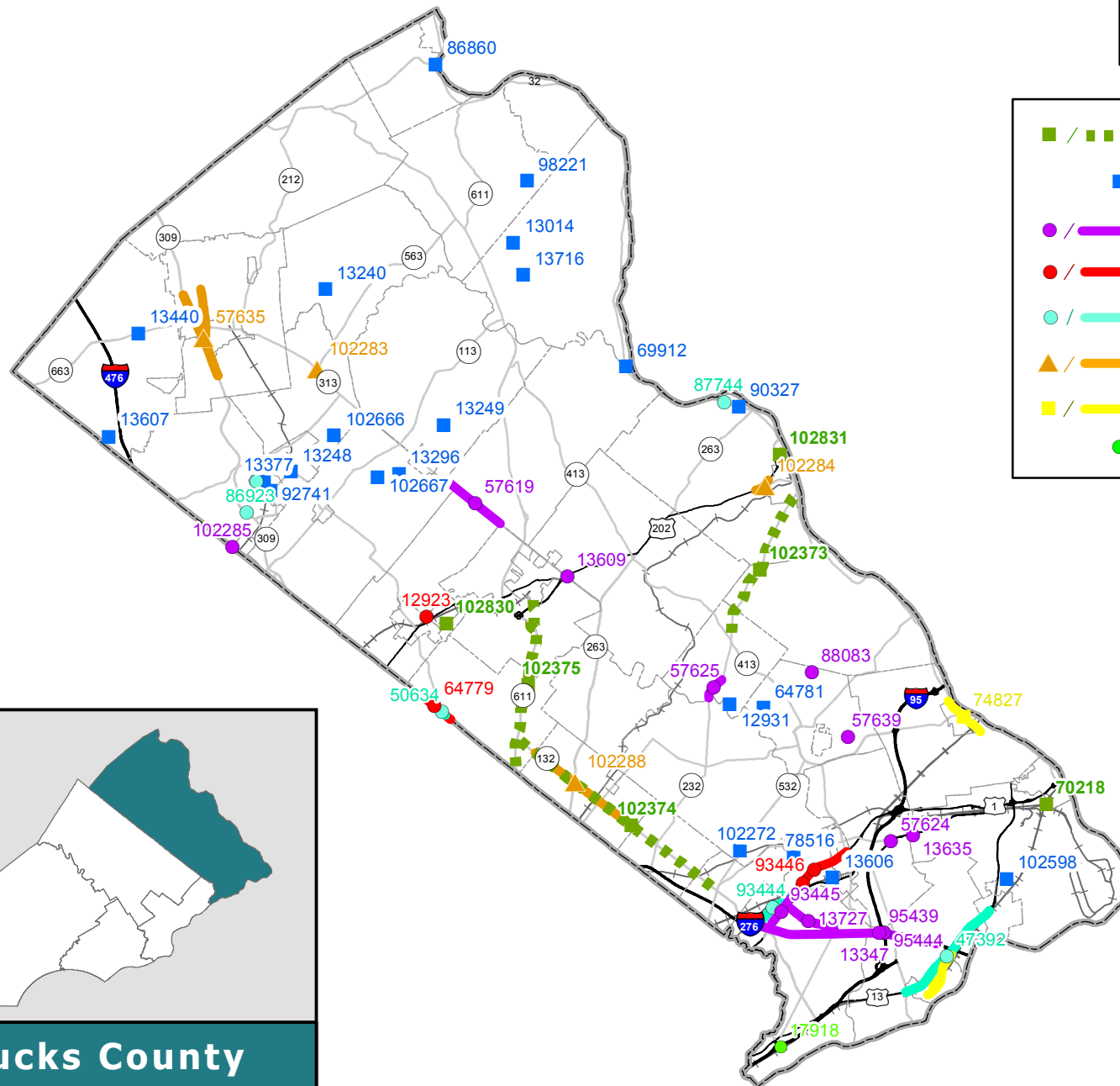
DVRPC FY 2015-2018 TIP for PA Correspondence Index

Projects below and those listed in the TIP document are ordered by MPMS ID

MPMS#	Project		
Bucks	Highway Project	Bucks	Highway Project
12923	Bristol Road Extension	102288	SR 132 Traffic Signal Communication System (ARLE 4)
12931	Worthington Mill Rd Br (Bridge)	102666	Branch Road over E. Branch Perkiomen Creek (CB#243)
12965	Lawn Avenue	102667	Quarry Road over Morris Run (CB# 244)
13014	Clay Ridge Road Bridge Over Beaver Creek (CB #30)	102830	Neshaminy Greenway Trail to Lenape Lane (TAP)
13240	Old Bethlehem Road Bridge Over Kimples Creek	102831	Solebury Route 202 Gateway Trail (TAP)
13248	Walnut Street Bridge Over Perkiomen Creek (CB #13)		
13249	Stone Bridge Road (Bridge)		
13296	Rickert Road Bridge Over Morris Run Creek (CB #21)		
13347	I-95, PA Turnpike Interchange (TPK)- STAGE 1		
13377	Main St over SEPTA (Bridge)		
13440	Allentown Road and PA 663 Bridges (2) Over Licking Creek		
13549	US 1 (Bridges) Design (Section 03S)		
13606	Hulmeville Avenue Bridge Over Conrail		
13607	Upper Ridge Road Bridge Over Unami Creek		
13609	PA 313/US 202, East State Street to Mechanics Road Intersection Improvements		
13635	Oxford Valley Road/Lincoln Highway Intersection Improvements		
13716	Headquarters Road Bridge Over Tinicum Creek		
13727	Bristol Road Intersection Improvements		
17918	I-95, Transit Improvements/FLEX (Cornwells Heights)		
47392	Route 13/Bristol Pike, PA 413 to Levittown Parkway Restoration		
50634	County Line Road Restoration (M04)(3R)		
57619	Route 313 Corridor Improvements		
57624	Woodbourne Road/Lincoln Highway Intersection Improvements		
57625	Route 232, Swamp Road Safety Improvements		
57635	Quakertown Joint Closed Loop Signal System		
57639	Newtown-Yardley Road Intersection Improvements		
64779	County Line Road Widening		
64781	Swamp Road/Pennswood Road Bridge Over Branch c Neshaminy Creek		
69912	River Road Bridge Over Tohickon Creek		
70218	Delaware Canal Pedestrian Tunnel		
74827	Delaware Canal Enhancement		
78516	Bridge Replacement Brownsville Road		
86860	PA 611 Bridge Over Cooks Creek		
86923	PA 309, Sellersville Bypass, Resurfacing (PM1)		
87744	Wall and Pavement Repair, SR 0032 - LG1(River Road)		
88083	Stoopville Road Improvements - Phase 2		
90327	River Rd o/ Trib Delaware (Bridge)		
92741	Main St o/Br Perkiomen Cr (Bridge)		
93444	Route 1 Improvement-South (Section RC1)		
93445	Route 1 Improvement-North (Section RC2)		
93446	Route 1 Improvement Frontage Corridor (Section RC3)		
95439	I-95, PA Turnpike Interchange (TPK)- Section D10		
95444	I-95, PA Turnpike Interchange (TPK)- Section D20		
96217	Central Bucks Congestion Mitigation		
97991	Doylestown Township Signals Upgrade (ARLE 3)		
98221	Stock's Grove Road over Beaver Creek		
102272	Holland Road at Buck Road and Route 532		
102283	SR 313/SR 563 New Traffic Signal (ARLE 4)		
102284	SR 202 (Lower York Road) Traffic Signal Interconnect System (ARLE 4)		
102285	County Line Road Intersection Improvements (ARLE 4)		

FY 2015 - 2018 Transportation Improvement Program

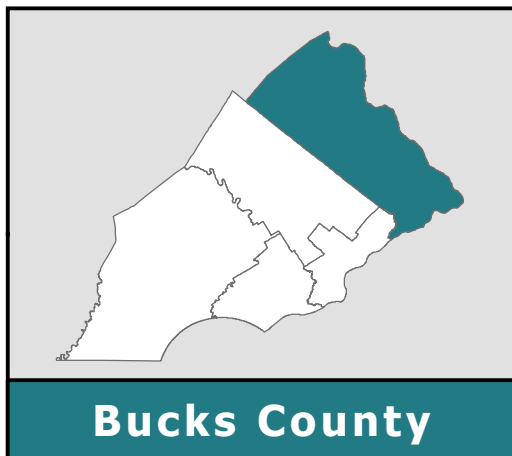
Highway Program



- / ■ ■ ■ ■ Bicycle/Pedestrian Improvement
- Bridge Repair/Replacement
- / ■ ■ ■ ■ Intersection/Interchange Improvement
- / ■ ■ ■ ■ Roadway New Capacity
- / ■ ■ ■ ■ Roadway Rehabilitation
- ▲ / ■ ■ ■ ■ Signal/ITS Improvement
- / ■ ■ ■ ■ Streetscape
- Other

projects not mapped

96217
97991



July 2014

