

DVRPC Information Resource Exchange Group Meeting

# GIS Applications for Public Safety in Philadelphia

Kevin Thomas, Director of Research & Analysis, Philadelphia Police Department

U.S. Grant Ervin, Public Safety GIS Program Manager, DM Office of Public Safety

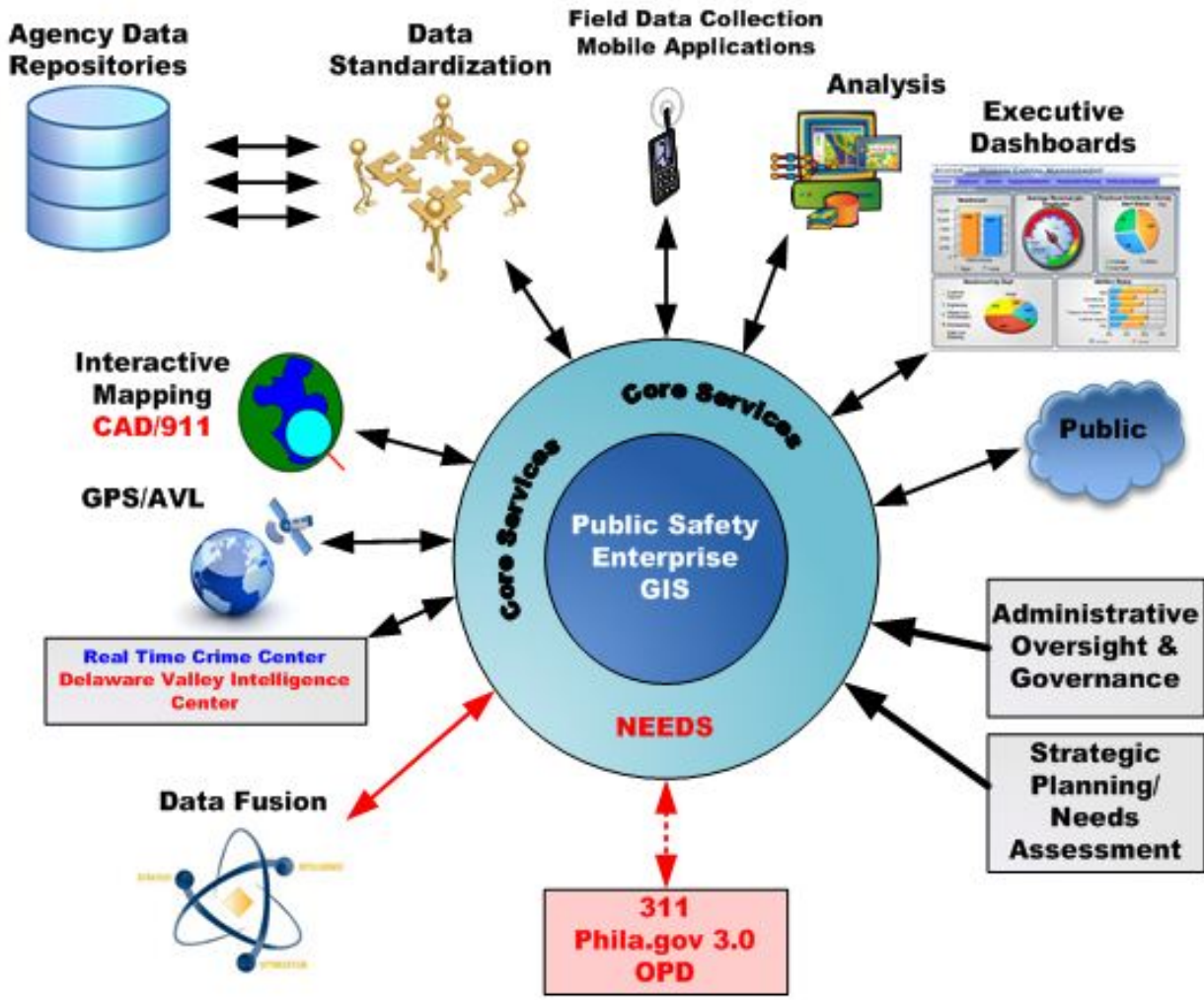


# Philadelphia Public Safety GIS Enterprise Group

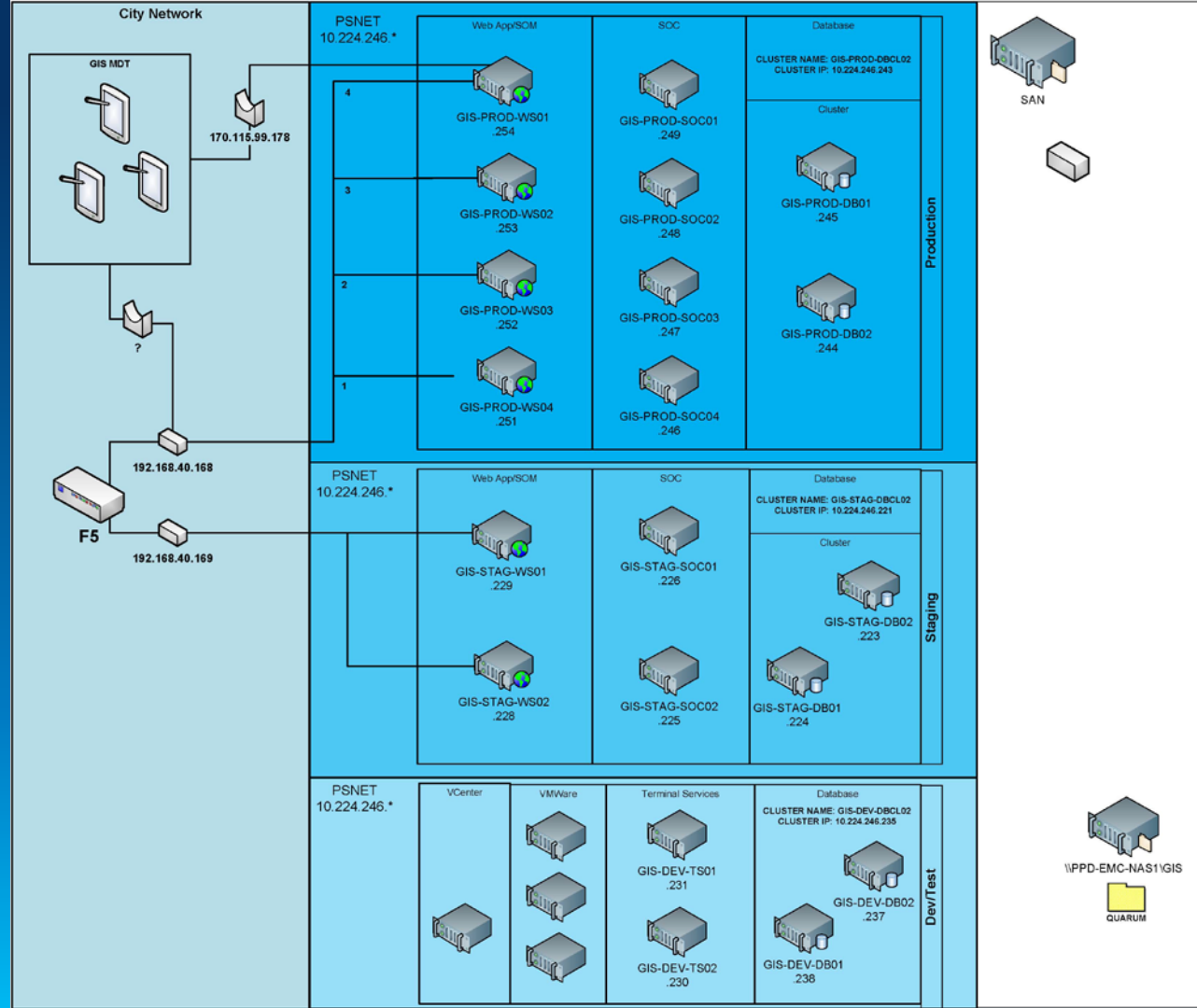
- Building the Enterprise was undertaken at the end of 2009 based on the need to upgrade/create geospatial functionality within and across the city's big 3 public safety agencies (Police, Fire and Emergency Management)
- Enterprise is shared across all Public Safety agencies.
- Serves as the GIS Environment for the Delaware Valley Intelligence Center, a regional fusion center.

# ArcGIS Server used as a platform

- Ensure everything flows thru the GIS environment. Like the “Force”.
- Leverage ArcSDE and Microsoft SQL Server Spatial for Data.
- Integration of video, sensors, public/private feeds, etc...



- 24 Physical Servers
- 20 TB of storage
- ArcGIS Version 10.0, 10.1 and 10.2 environments.
- Performance tuned using Apache JMeter



# Police

- Crime Mapping & Analysis Application
- Crime Briefings (COMPSTAT)
- GPS/AVL
- SMART Policing: District Analyst Coordinators

### CompStat

Layer Visibility

- Current Compstat 2 Weeks
  - Shooting Incidents
  - Shooting Victims
  - Homicides
  - Rapes
  - Robberies
  - Agg Assaults
  - Burglaries
  - Stol/Recov Autos
  - Theft from Vehicles
  - Narcotics
  - Theft
  - Curfews
  - Truancies
- Previous Compstat 2 Weeks

#### Homicides

Layer Visibility

- Homicides

### Activity

Layer Visibility

- Activity
  - DISTRICT ACTIVITY (Current 2 Co
  - DISTRICT ACTIVITY (Previous 2 C
  - 8 to 4
  - Nets
  - Bikes
  - Burglary Detail
  - Mobile Field Force
  - Tactical
  - Highway
  - Narcotics Strike Force
  - Northwest Patrol
  - East Division Safety Grid
  - South Div Tac Team
  - Crime Plan OT Sat/Sun
  - City Wide Vice
  - UCD
  - 15th District Footbeats
  - Summer Foot Beats
  - Crime Plan Foot Beats

### PrisonRelease/Warrants

Layer Visibility

- Pris Rel Current 2 Wks Compstat
  - Homicide Releases
  - Latest Arrest
  - In Arrest History
  - Rape Releases
  - Robbery Releases
  - Agg Assault Releases
  - Burglary Releases
  - Theft Fr Auto Releases
  - Theft Releases
  - Stolen Auto Releases
  - Narcotics Releases
  - VUFA Releases
  - Other Releases
- Pris Rel 28 Day Compstat Period
- Warrants Current 2 Wks Compstat
  - Active Arrest Warrants

### Shooting Victims

Layer Visibility

- Shooting Victims

### Gun Related Layers

Layer Visibility

- Gun Crimes
- Firearms Seized
- Active Arrest Warrants
- Gun Crime Prison Releases

### Compstat Period Traffic Crashes

Layer Visibility

- Current 2 Weeks
  - Fatal Crashes
  - Vehicle Crashes
  - Impounded Vehicles
  - DUI
  - Vehicle Crashes w/Pedestrian
  - Vehicle Crashes w/Bicycle
  - Vehicle Crashes w/Motorcycle
  - Police Vehicle Crashes



Incidents by ...

Date range:

01/01/2013 to 07/01/2013

Hours:

00 to 23

Day(s):

All M T W Th F Sa Su

Include in query:

Incidents  Arrests  Both

By Crime Type  By Ucr List

Nature Code = DRUGS

Selection area:

Current View Area

Hide points

Clear map on every query ?

Run Query

Incidents Found: 3825

Map Layers Regional Base Basic Street Map

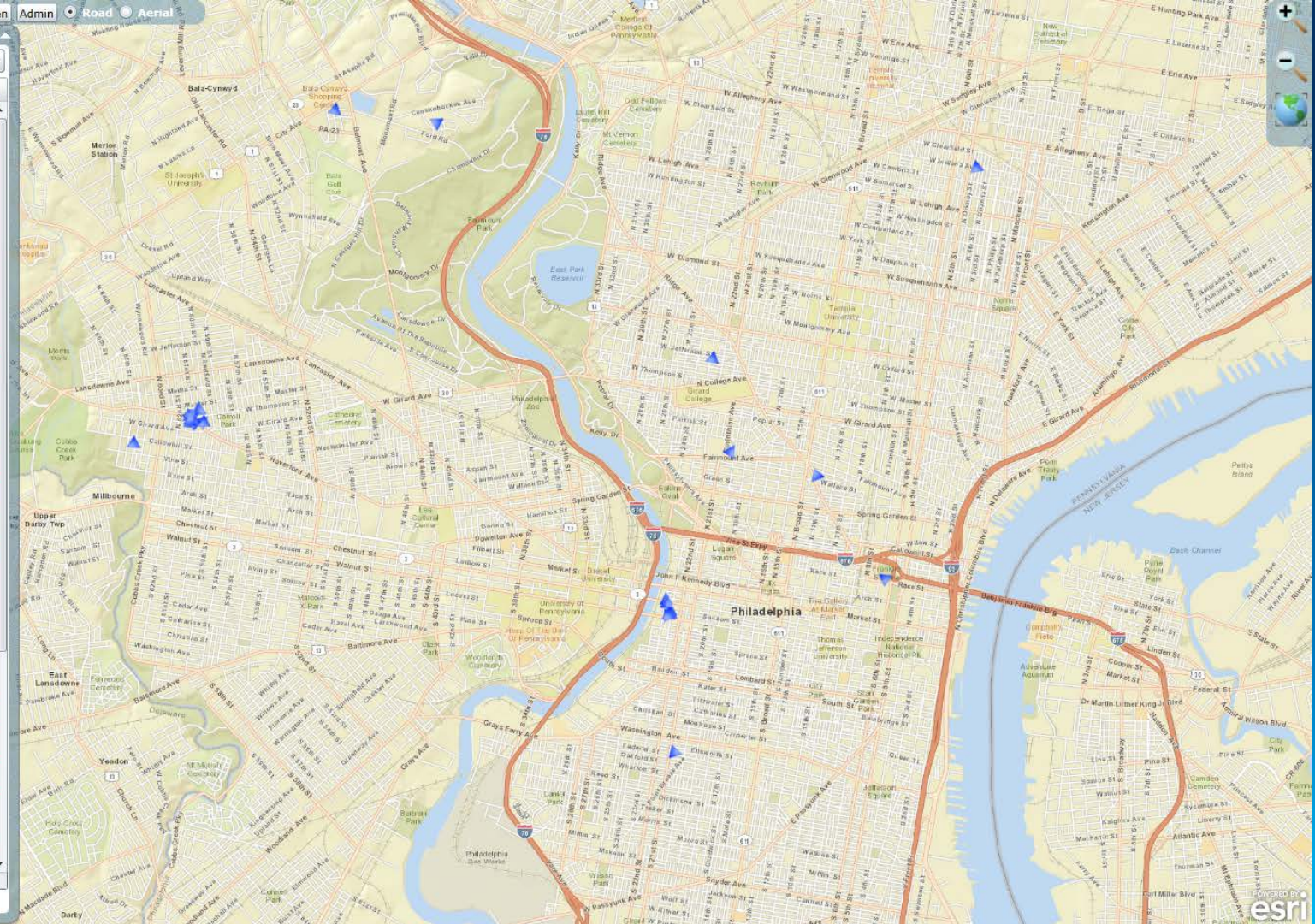




Live Vehicles

Vehicle ID:  Type: All

Vehicle Id	Speed	Last Updated
+ GEO01	0	> 1 year
+ GIS07	31	5 days ~ 10 days
+ HL_LYNN	0	> 1 year
+ MDL1915	0	1 day ~ 5 days
+ MDT_GPS_194	0	> 1 year
+ MDT_GPS_TE1	0	> 1 year
+ MDT_GPS_TE1	0	> 1 year
+ MDT_1900	0	1 day ~ 5 days
+ MDT_1901	0	3 hours ~ 1 day
+ mdt_1902	0	3 hours ~ 1 day
+ MDT_1903	0	< 30 sec.
+ MDT_1913	0	> 1 year
+ MDT_1914	0	3 hours ~ 1 day
+ MDT_1922	0	< 30 sec.
+ MDT_1927	0	1 month ~ 3 months
+ MDT_1932	0	> 1 year
+ MDT_1933	0	1 day ~ 5 days
+ MDT_1935	0	> 1 year
+ MDT_198	0	> 1 year
+ MDT_19C	0	< 30 sec.
+ MDT_190C	0	> 1 year
+ MDT_GPS48a	0	3 hours ~ 1 day
+ MDT1901	0	> 1 year
+ MDT1903	0	1 month ~ 3 months
+ MDT1911	0	< 30 sec.



[Live Vehicles](#)
[Vehicle History](#)
[Address Search](#)
[Full Screen](#)
[Admin](#)
[Road](#)
[Aerial](#)

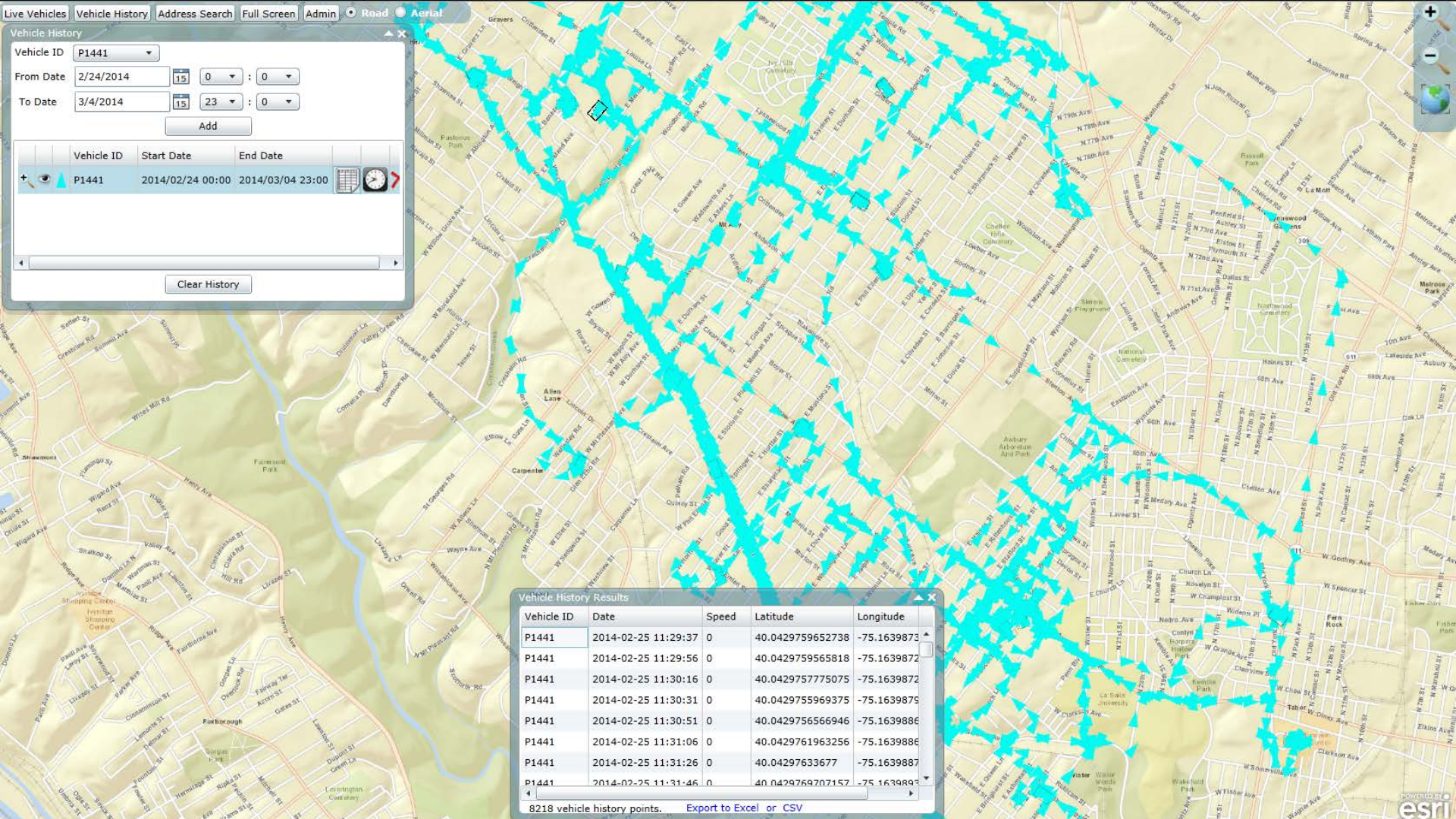
**Vehicle History**

Vehicle ID:

From Date:   :  :

To Date:   :  :

Vehicle ID	Start Date	End Date
P1441	2014/02/24 00:00	2014/03/04 23:00



**Vehicle History Results**

Vehicle ID	Date	Speed	Latitude	Longitude
P1441	2014-02-25 11:29:37	0	40.0429759652738	-75.1639873
P1441	2014-02-25 11:29:56	0	40.0429759565818	-75.1639872
P1441	2014-02-25 11:30:16	0	40.042975775075	-75.1639872
P1441	2014-02-25 11:30:31	0	40.0429755969375	-75.1639875
P1441	2014-02-25 11:30:51	0	40.0429756566946	-75.1639886
P1441	2014-02-25 11:31:06	0	40.0429761963256	-75.1639886
P1441	2014-02-25 11:31:26	0	40.04297633677	-75.1639887
P1441	2014-02-25 11:31:46	0	40.0429769707157	-75.1639887

8218 vehicle history points. [Export to Excel](#) or [CSV](#)

# SMART Policing



Philadelphia Police Department

**14th**

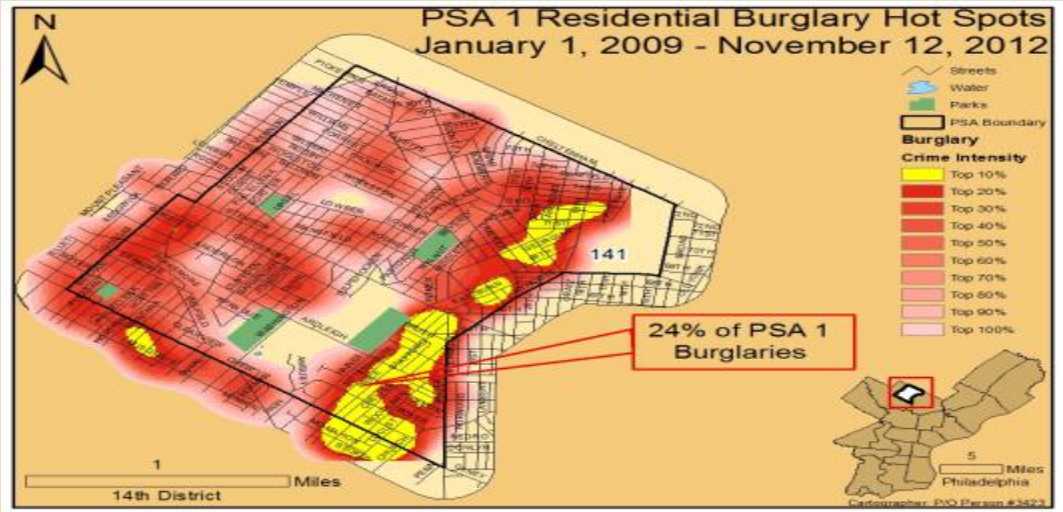
Eric Person



**Philadelphia Police Department**

# Executive Summary

- Residential burglaries in the lower part of Police Service Area 1
  - There were 279 residential burglaries during the analysis period
- 10% of them were committed by repeat burglary offenders
- Likely entry point in the rear of the property, by force
- Many homes in the focus area have the same layout
  - Rear driveways and breezeways
- The items craved were overwhelmingly electronics because they are easier to sell for quick cash



Philadelphia Police Department

# Problem Statement

- Residential burglaries in Police Service Area (PSA) 1
  - Burglaries were concentrated in the area of Stenton Ave to Chew Ave, Haines St to Wister St
  - Burglaries mostly committed using forced entry
  - Burglaries concentrated on weekdays
  - Burglaries concentrated during the day
  - Academic literature and past experience would suggest that repeat offenders may be responsible



Philadelphia Police Department

# Hypotheses

- Residential burglaries occur during the daytime when people are away at work.
- Burglaries happen when people forget to secure their property correctly.
- Residential burglaries are committed by a group of focused individuals looking to flip items for quick cash.



Philadelphia Police Department

# Major Analysis

- Environmental survey
  - Looked at the property landscape in the focus area
    - Most had rear driveways and breezeways
    - Some had brush obscuring front and rear of properties
      - Front of the houses
      - Rear of the houses

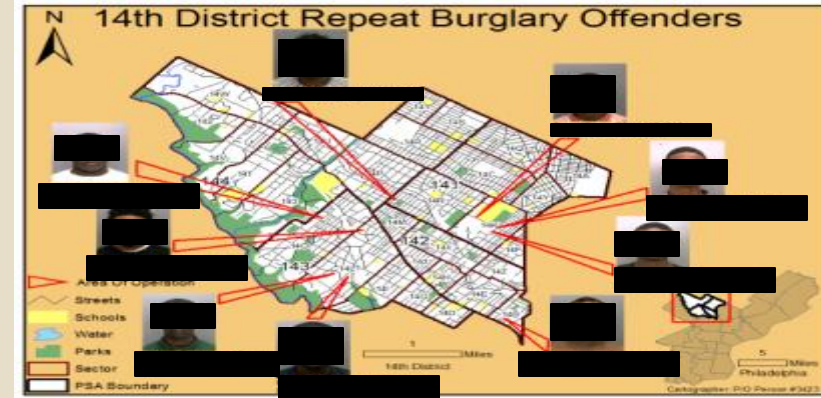


Philadelphia Police Department



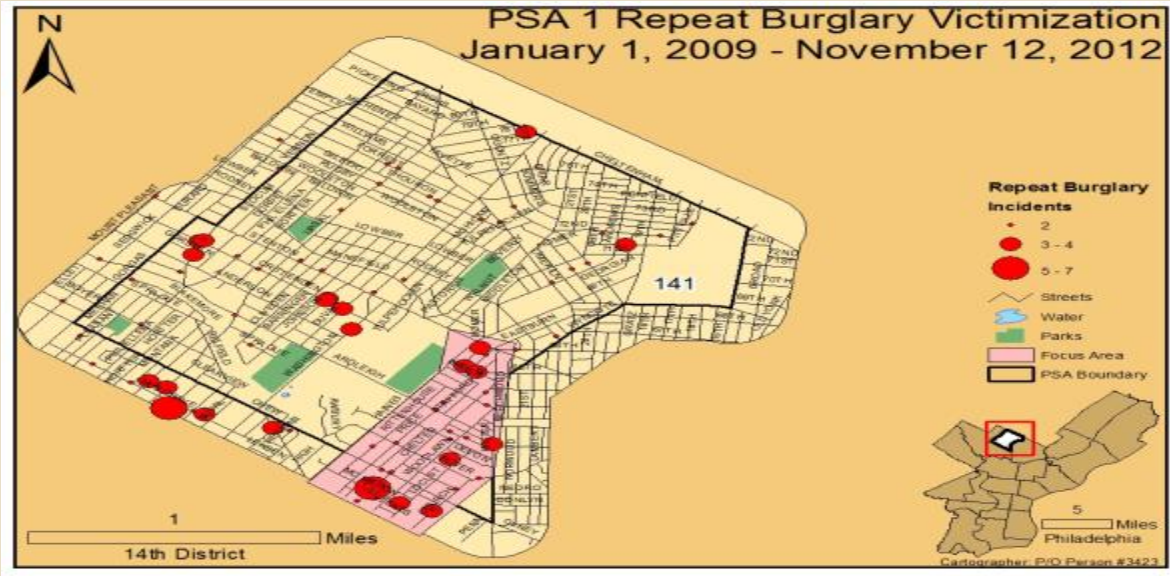
# Major Analysis Continued

- Entry method
  - Determined that most were forcible entry
  - Most occurred in the rear of property
- Prolific offenders
  - Looked at the repeat burglary offenders in the focus area to try and make a connection
  - Determined that 10 % of the PSA's burglaries were done by repeat offenders



Philadelphia Police Department

# Secondary Analysis



- Hot spot maps
  - Focus area experienced an increased number of incidents

## Repeat victimization

- Shown that many of the burglaries in the focus area were repeated offenses

## Analyzed the burglary proceeds

- Electronics were the most craved items



Philadelphia Police Department

# Recommendations

- Home security surveys
  - To evaluate the property for weak points
- Prevention strategies
  - Cocoon neighborhood watch
    - Notifies nearby homeowners when a burglary occurs and flyers are given to homes in the focus area
- Operation ID
  - Help track stolen goods
- Increase patrol
  - During high crime time
    - To deter crime and gather intelligence
    - Burglary bulletins given to patrol officers



# Recommendation Implementation

- Prevention strategies
  - Crime prevention officer, burglary teams, and crime scene officers give homeowners and nearby residents tips
  - Officers also conduct home surveys upon request
  - All burglary scenes are being processed for fingerprints
- Operation ID
  - Electronics are being tagged upon owners request
- Increase patrol
  - Burglary teams added to the high crime areas
  - Repeat offenders targeted and tracked
- Results
  - 39 % reduction in district burglaries from 2012 to 2013



Philadelphia Police Department

**19th**

Andrew Jenkins



**Philadelphia Police Department**

# Problem Statement

- Historically known to be a problem location.
- Ranging from narcotics sales and bar fights to robberies.
- Double homicide occurred inside where the offender and victim got into a dispute over narcotics sales inside the bar.



Philadelphia Police Department

# Hypotheses



Corral Bar: 5231 Market St.

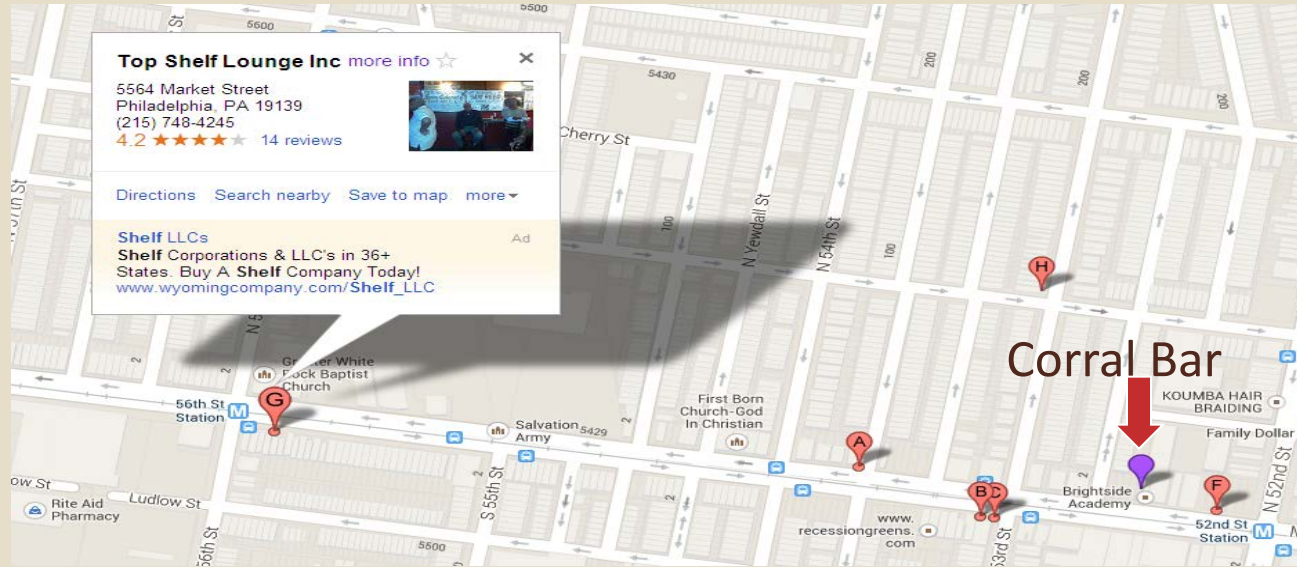
- Corral bar had become a safe haven for narcotics sales and other criminal activity.
- This criminal activity is contributing to violence in the bar and in the area outside of the bar.
- Corral bar is more problematic than other bars in the area.



Philadelphia Police Department

# Major Analysis

- Compared the Corral bar to the Top Shelf Lounge.
- Both bars are located on the Market Street Corridor.
  - Less than a half a mile apart.



Philadelphia Police Department



# Major Analysis

The screenshot displays a software interface for data analysis. On the left, a map shows a street grid with a search box containing '5564 MARKET ST, 19139' and a score of 98.6. On the right, a table titled 'Incidents by Date Range' lists 17 incidents. The table has columns for 'DC', 'PHILA\_C', 'UCR', 'LOC', and 'SEC'. All incidents are located at '5564 MARKET ST'.

DC	PHILA_C	UCR	LOC	SEC
2012-18-020992	2701	2701	5564 MARKET ST	2
2012-18-020929	2701	2701	5564 MARKET ST	2
2012-18-010745	2701	2701	5564 MARKET ST	2
2012-18-020690	2701	2701	5564 MARKET ST	2
2012-18-020681	2701	2701	5564 MARKET ST	2
2012-18-052585	2701	2701	5564 MARKET ST	2
2012-18-020581	2701	2701	5564 MARKET ST	2
2012-18-020681	2701	2701	5564 MARKET ST	2
2012-18-020584	2701	2701	5564 MARKET ST	2
2012-18-020582	2701	2701	5564 MARKET ST	2
2012-18-022851	3301	3301	5564 MARKET ST	2
2012-18-020580	2701	2701	5564 MARKET ST	2
2012-18-020585	2701	2701	5564 MARKET ST	2
2012-18-020581	2701	2701	5564 MARKET ST	2
2012-18-020583	2701	2701	5564 MARKET ST	2
2009-18-057180	2701	2701	5564 MARKET ST	M
2012-18-020584	2701	2701	5564 MARKET ST	2
2012-18-020588	2701	2701	5564 MARKET ST	2

- Pulled PPD data from area in and around both the Corral Bar and Top shelf Lounge.
- Data was checked and reports were read to ensure accuracy.
- Comparison was made between the two establishments.

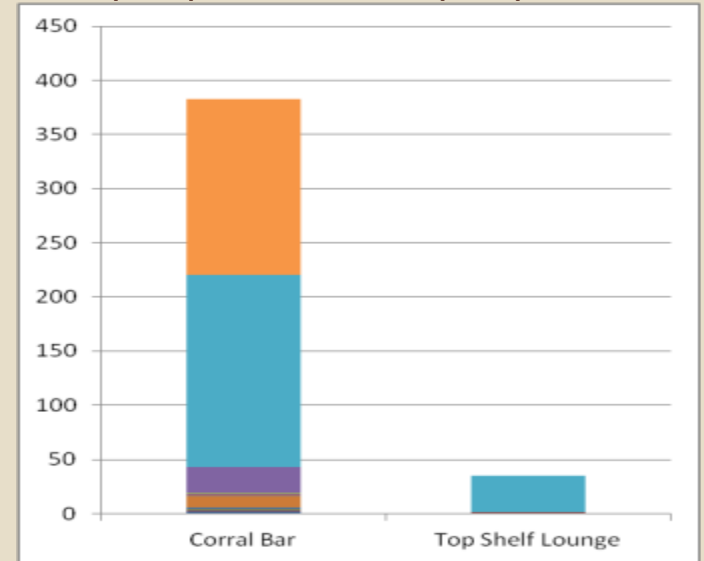


Philadelphia Police Department

# Major Analysis

	Corral Bar	Top Shelf Lounge
Homicide	2	0
Aggravated Assault	1	1
Theft	1	0
Assault	1	0
VUFA	1	0
Narcotics Violations	10	0
Gambling Violations - Gambling Device	1	0
DUI	1	0
Public Drunkenness	1	0
City Ordinance Violations	24	0
Investigation of Persons - Investigation of Person	177	34
Minor Disturbances - Disorderly Crowd Dispersed	163	0
All Calls	449	37

Number of Incidents from 01/01/2009 to 05/18/2012



Philadelphia Police Department

## Actions Taken

- Patrols increased for time being & analysis started
- Partnership with DA Nuisance task force & Councilwoman
- Analysis presented at court
- Bar closed and liquor license was sold and may not be transferred to any property within the 16<sup>th</sup>, 18<sup>th</sup>, or 19<sup>th</sup> police districts



Philadelphia Police Department

25<sup>th</sup>

Kelly Robbins



Philadelphia Police Department

# Executive Summary



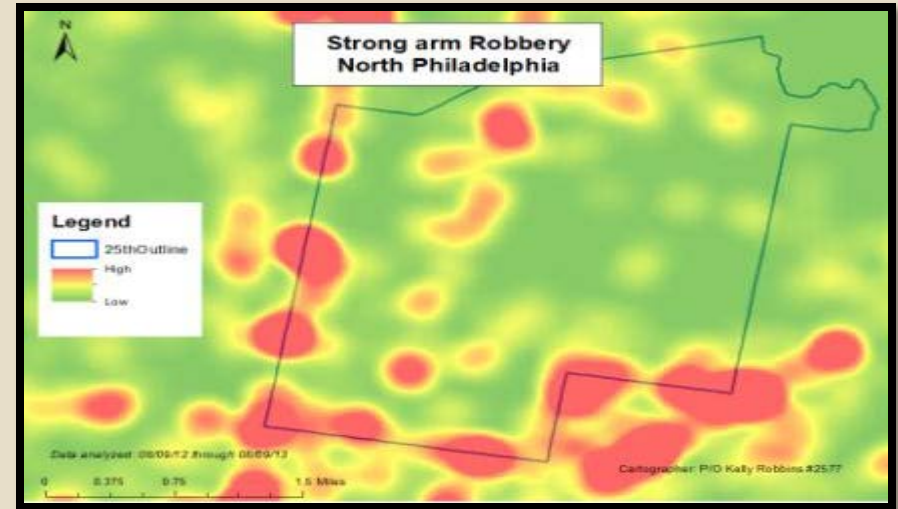
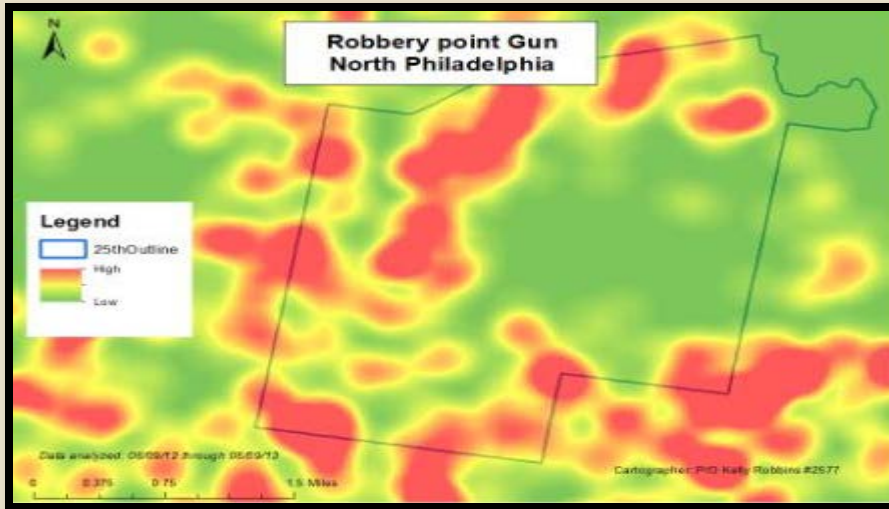
- A rash of robberies drew attention to the long term problem of robberies in the 25<sup>th</sup> district.
  - While only 39% of all robberies were committed without a weapon, these strong arm robberies presented with more concentrated hotspots
    - Highly concentrated hot spots suggest a focused problem



Philadelphia Police Department

# Problem Statement

- After a rash of robberies in the 25<sup>th</sup> district, attention was focused on this crime type for the period of 08-09-12 through 08-09-13; Armed robbery and strong arm robbery were compared
  - The 25<sup>th</sup> recorded 587 robberies; About 46% (n=272) were robberies point of gun. About 39% (n=231) were strong arm robberies



Philadelphia Police Department

# Hypotheses

- There will be significant differences when comparing armed robbery to strong arm robbery
- Armed robberies will occur at specific times and in concentrated areas, making them ideal for targeted treatments
- Strong arm robberies are being committed by school aged offenders
- Offenders will use Septa transportation to help them flee



**Philadelphia Police Department**

# Major Analysis

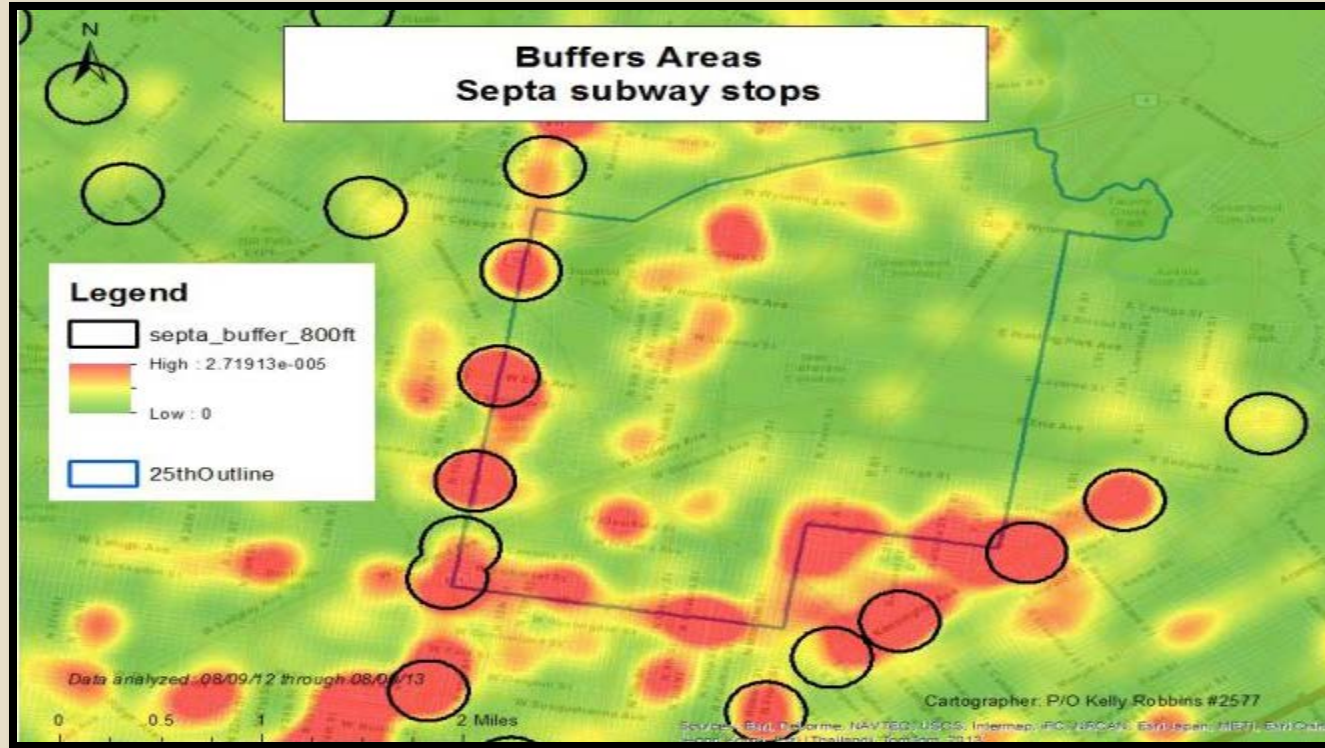
- Strong arm robberies are concentrated near Septa rail stations
- Strong arm robberies occurred Tues, Thurs and Fri at 11pm, 5pm, and 9pm
- The average victim was 35 years old, Black/Hispanic, and female
- The average offender was 27 years old, Black/Hispanic, and male
- Almost two-thirds of offenders appear to have acted alone
- Almost all were committed at street-level (not on a subway, bus, train or trolley)
  - 77% were committed on the highway (outside)
- In 41% of the cases there was one or more witnesses
- In 70% of robberies, the doer fled on foot and did not appear to use Septa during escape
- Either a phone or US Currency was taken in roughly 60% of robberies



Philadelphia Police Department

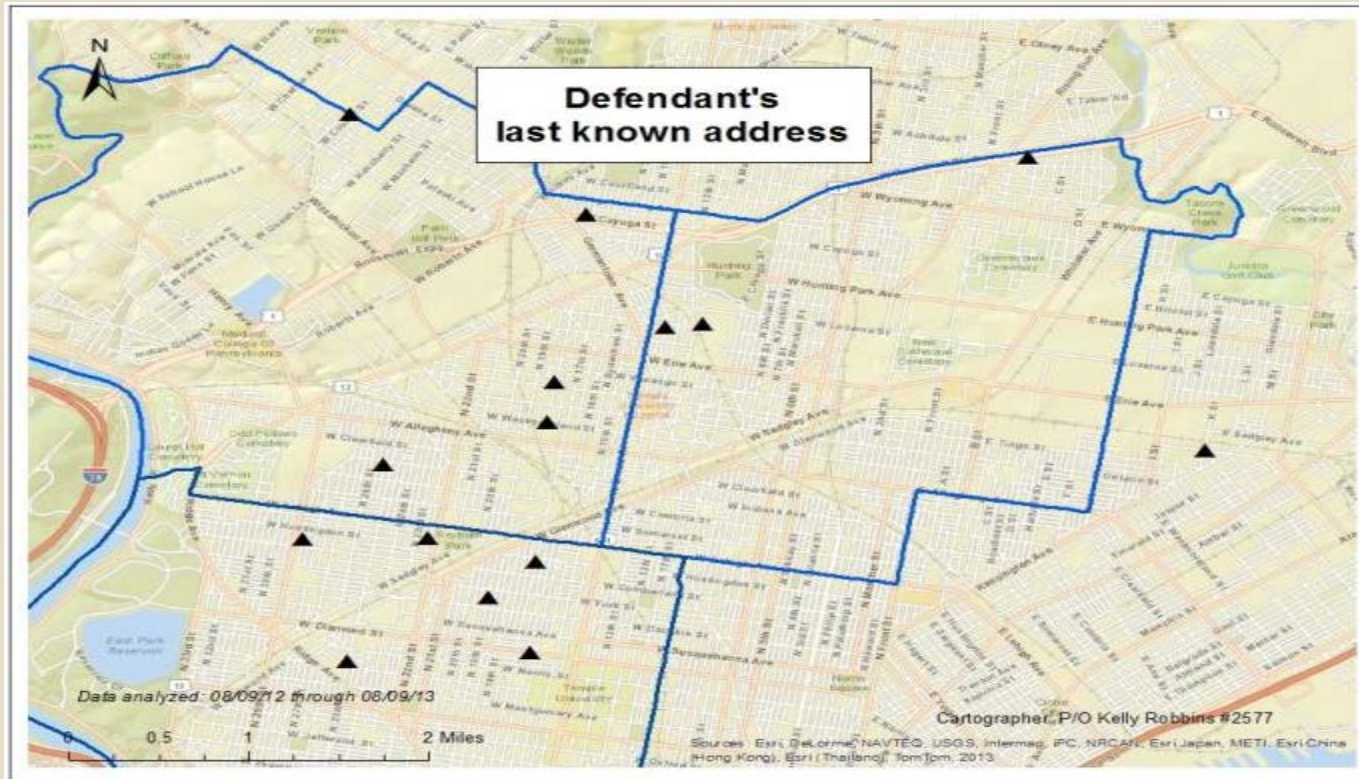


# Major Analysis



Philadelphia Police Department

# Major Analysis



# Philadelphia Police Department

# Secondary Analysis

- At least 30% of victims are either coming from or waiting for Septa services just prior to the robbery
  - This number may actually be much higher, but it is not often included in the investigation
- Of the offenders arrested for the Broad Street robberies (n=27), 63% had prior arrest records, averaging 5 arrests per offender
- Of the offenders with prior arrest records:
  - 63% had prior drug arrests
  - 37% had prior crack cocaine (Possession or PWID) arrests
  - 63% had prior theft or robbery charges
  - Arrested in an average of 3.7 different districts over an average period of 5.1 years
    - This may illustrate that offenders committing robberies in the 25<sup>th</sup> are nomadic rather than establishing a specific hunting ground



Philadelphia Police Department

# Recommendations

- Partnership with Septa Police
  - Awareness campaign
    - Public and permanent ads reminding waiting Septa users to be aware of their surroundings
- Role Call reminders for RTCC utilization
  - CCTV cameras in these areas provide the ability to received quick information on correct flash and direction of offenders
- Holiday Grid Established
  - Months of November and December 2012
  - Foot beats focused on robberies near Septa and businesses
- VUFA Grid Established
  - Established a high police presence to deter violent crime
  - Analysis forthcoming



Philadelphia Police Department

# Fire

- Hydrant Inspection Application with Philadelphia Water Department
- Battalion Chief Mobile Application
- Internal Fire Map Application

# Hydrant Inspection Application

- Update Fire Hydrant information for the Philadelphia Water Department.
- Formerly a paper based survey system to inspect 27,000 hydrants.
- GPS enabled JavaScript based application

## Benefits

- Hydrant inspections rose from an average in the mid 60's to 95 percent.
- Hydrant corrections rose from a month to a week or less.
- Cost savings of \$17,000 annually just to print inspection cards
- Updated hydrant information is available in the field.

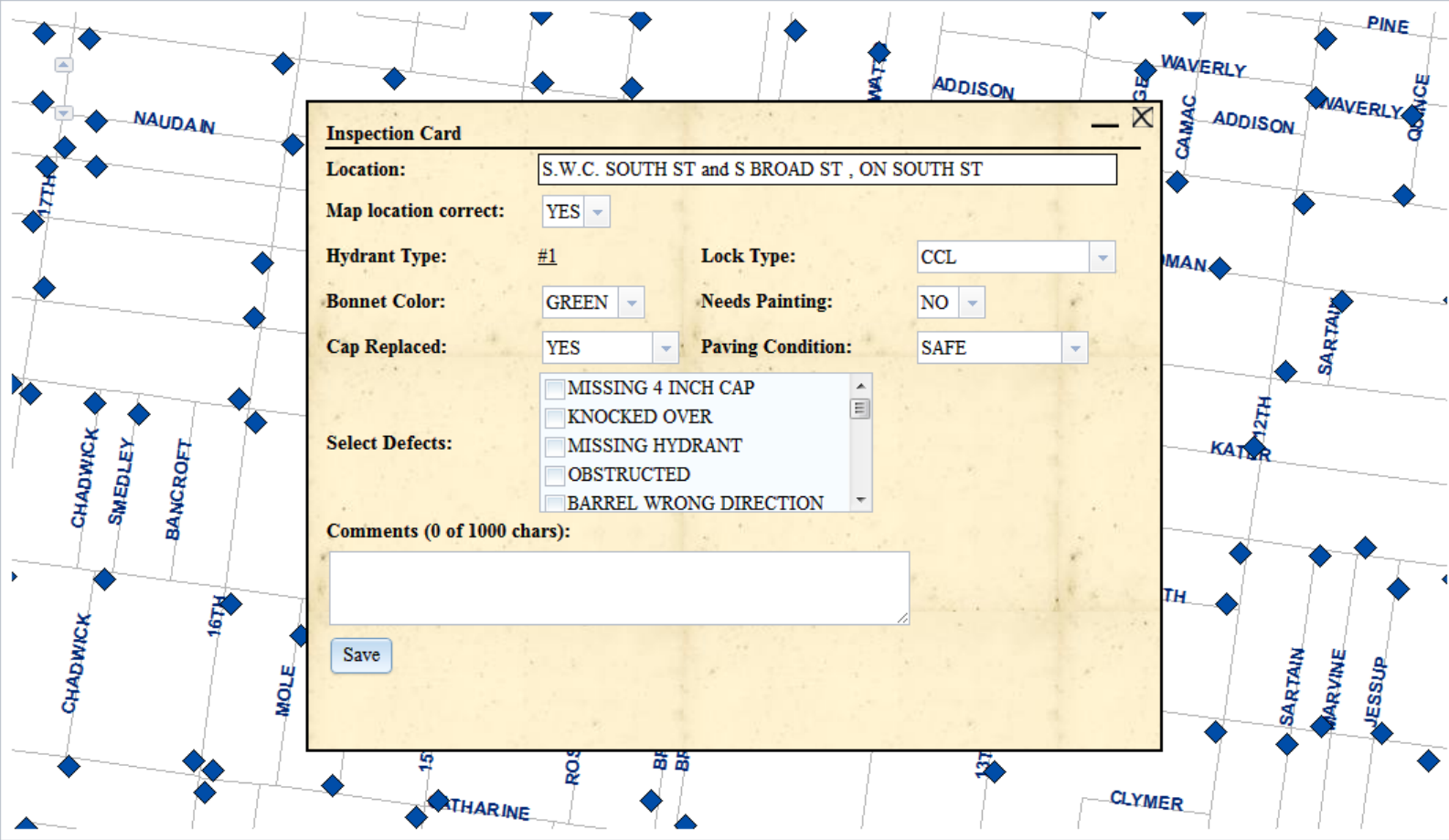
Set Location

Logged in as: station01

Find a location:

Find

Hydrant Actions



### Inspection Card

Location:

Map location correct:

Hydrant Type:  Lock Type:

Bonnet Color:  Needs Painting:

Cap Replaced:  Paving Condition:

Select Defects:

- MISSING 4 INCH CAP
- KNOCKED OVER
- MISSING HYDRANT
- OBSTRUCTED
- BARREL WRONG DIRECTION

Comments (0 of 1000 chars):

Save

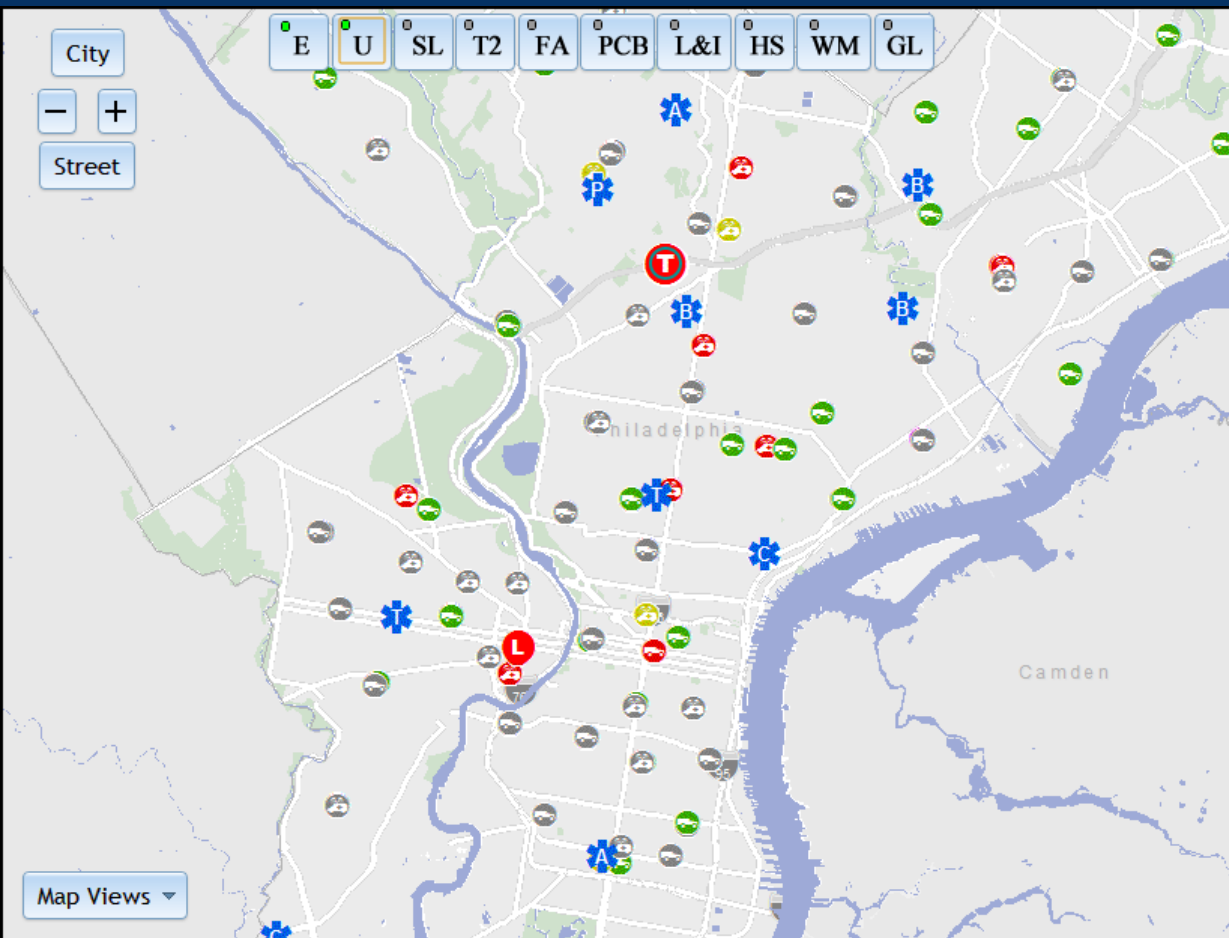
# Event Viewer Application

- Provides access to information that was typically sent over the radio
- Current vehicle locations, gas and water infrastructure, Tier 2 facilities, L&I violations, fixed assets, sensitive locations, and calls for service.
- JavaScript based application with access to Pictometry.

## Benefits

- Ability to identify current gas and water infrastructure on scene, real time.
- Correctly identify building footprints, determine collapse zones etc..
- Better resource deployment and more effective communication.





Fire    Medical    Other

LOCATION	TYPE	STATUS
3421 WOODLAND WALK	ALARM	Arrived
2016 DENNIE ST	DWG	Arrived
02 PIA	PIA/L	Enroute

**DWELLING FIRE**

Event ID: 133230781 ([Zoom to](#))  
 Date: 11/19/13 22:09  
 Location: 2016 DENNIE ST  
 Status: Arrived  
 Priority: 11  
 Units: L8(Dispatched) B2(Enroute) SQ72(Enroute)  
 L18(Enroute) E59(On Scene)

# Delaware Valley Intelligence Center (DVIC)

- Department of Homeland Security regional fusion center for the Delaware Valley covering 13 counties from 4 states.
- Currently building (waiting for grant extension) a Situational Awareness Portal for Transit Security Desk at the DVIC.







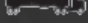

## Emergency Management

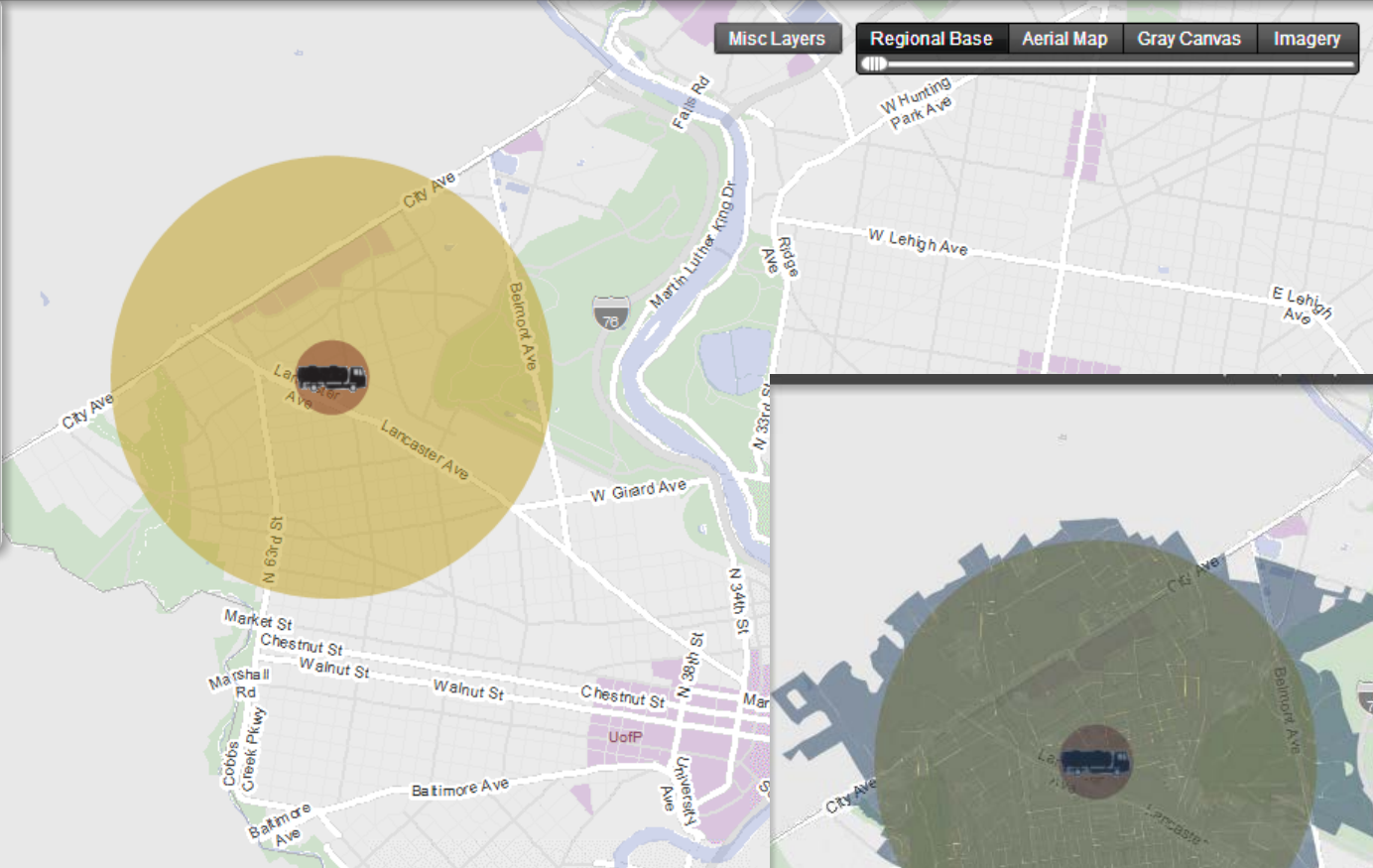
- Regional Incident Center Application



## Bomb Threat

Select threat type and click on map

-  Pipe Bomb
-  Suicide Vest
-  Briefcase / Suitcase Bomb
-  Sedan
-  SUV / Van
-  Small Delivery Truck
-  Semi-Trailer
-  Container / Water Truck



Misc Layers

Regional Base Aerial Map Gray Canvas Imagery

3 km

2 mi

Latitude:39.991390 Longitude:75.226829

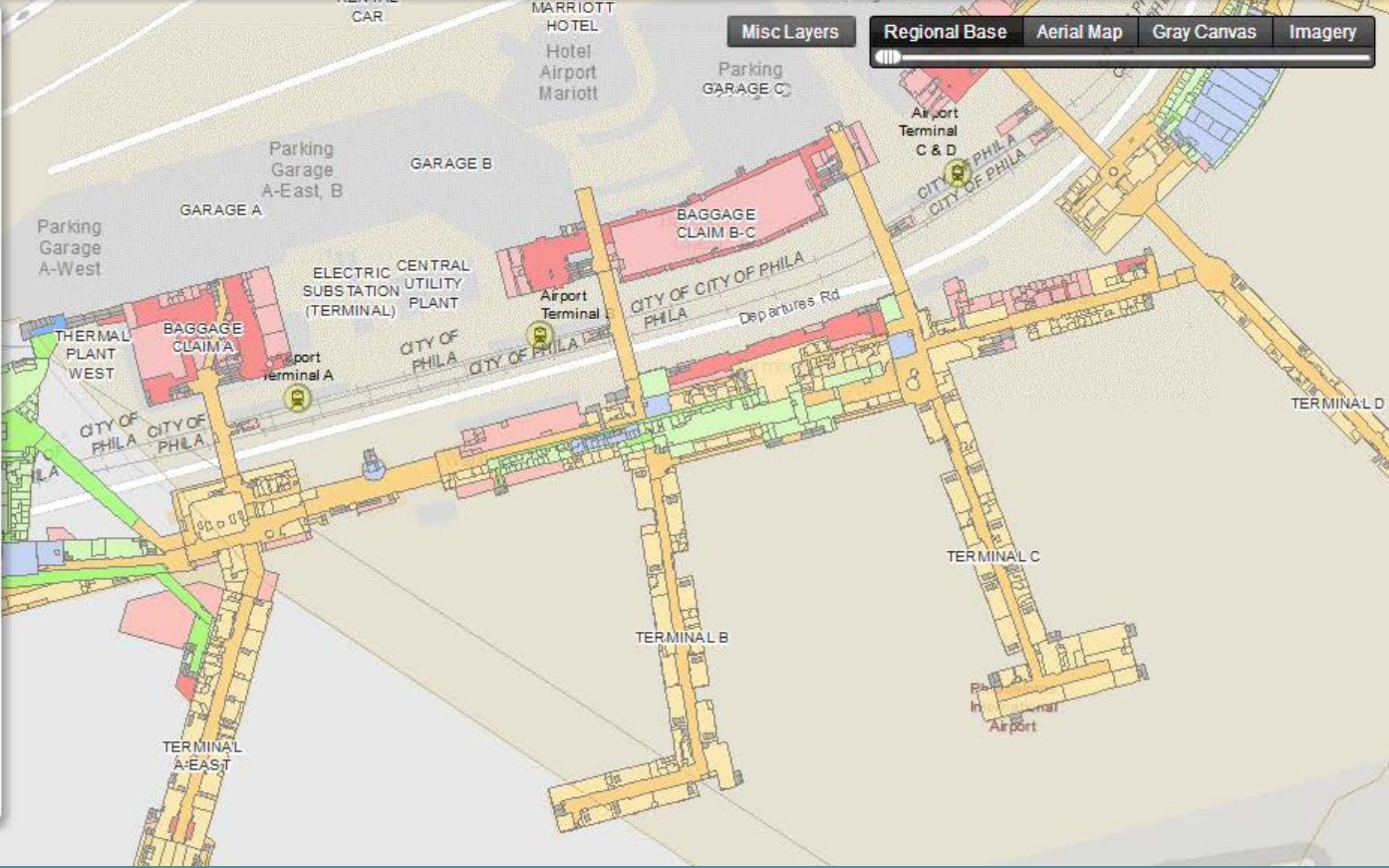


Navigation icons: Home, Location, PHL, Red Pin, Green Pin, Yellow Pin, Tools, Layers, Regional Base, Aerial Map, Gray Canvas, Imagery, Help (?)

**Philadelphia Infrastructure**

Layer Visibility

- LNG Storage Locations
- Natural Gas Distribution
- ▼  Airport
  - ▼  PHL Facilities
    - Airport Access Gates
    - Airport VBIED Post
    - Airport Property (PHL)
    - Aircraft Parking
    - Runway Markings
    - Runways
    - Taxiways
    - Airport Terminal Floor 4 (PHL)
    - Airport Terminal Floor 3 (PHL)
    - Airport Terminal Floor 2 (PHL)
    - Airport Terminal Floor 1 (PHL)
    - Airport Labels
    - Airport Facilities
  - ▼  Concourse (Center City)
    - Concourse Access Points



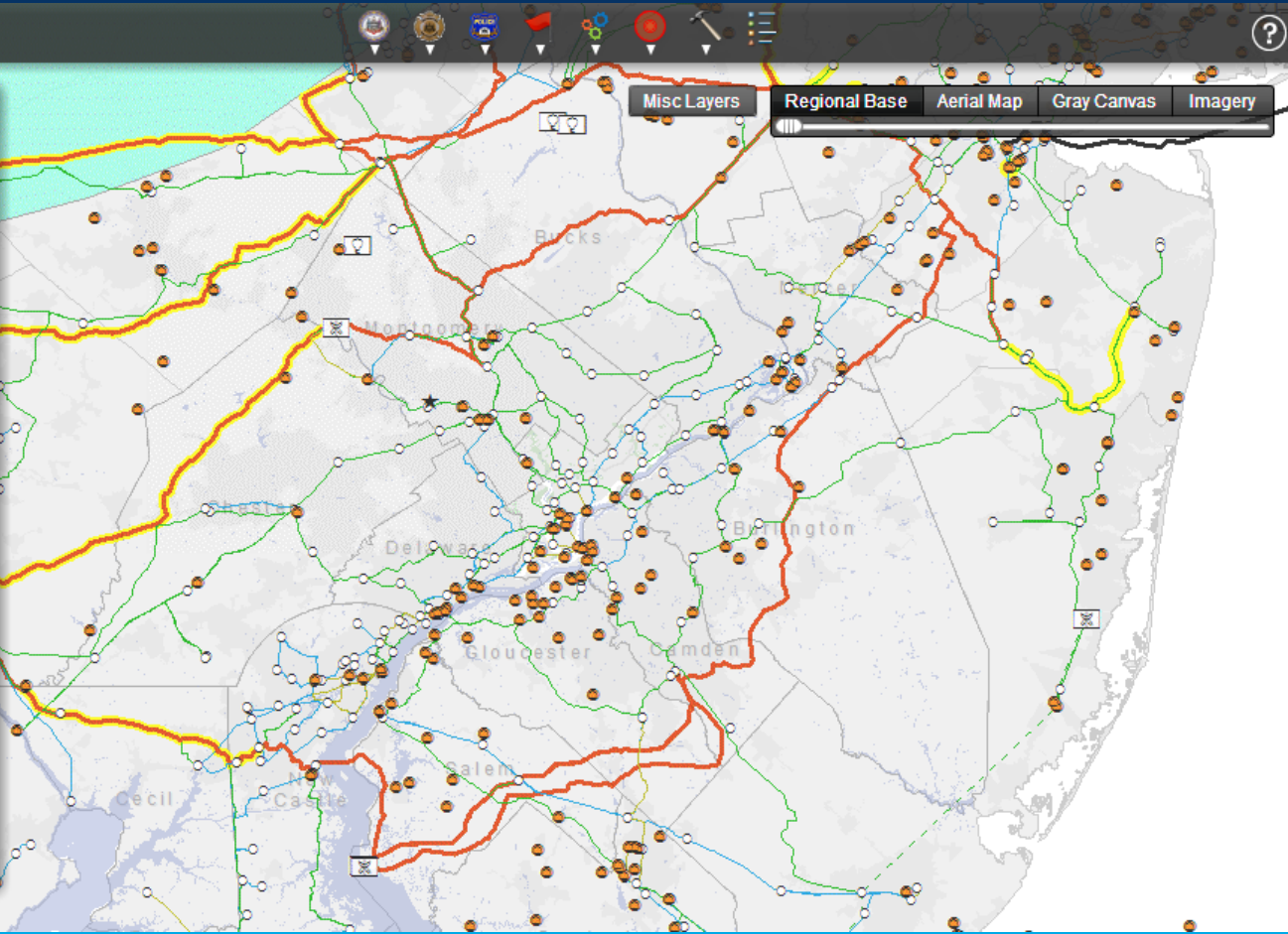
500 ft

Latitude: 39.877384 Longitude: -75.248248

**HSIP Gold 2012: Infrastructure Data**

Layer Visibility

- Zip Code Boundary
- 10 Healthcare and Public Health
  - 10.1 Direct Patient Healthcare
    - 10.1.1 Hospital
      - Hospitals
      - Veterans Health Administration
      - Veterinary Services
      - Hospital Boundaries
    - 10.1.2 Ambulatory Healthcare Facility
      - Urgent Care Facilities
      - 10.1.3 Extended Care Facility
        - Nursing Homes
    - 10.2 Public Health Agency
      - Public Health Departments
    - 10.5 Fatality/Mortuary Facility
      - 10.5.2 Funeral Home or Crematorium
        - Funeral Homes and Funeral Serv
      - 10.5.3 Cemetery



# Future Direction

- Regional integration for Public Safety
- Dashboards
- Data Management
- Enhanced spatial analytics
- Increase relationships with Private companies
- Mobile
- Training for staff
- Mentoring staff

# Questions?

Kevin Thomas [kevin.thomas@phila.gov](mailto:kevin.thomas@phila.gov)  
Director of Research & Analysis  
Philadelphia Police Department

U.S. Grant Ervin [grant.ervin@phila.gov](mailto:grant.ervin@phila.gov)  
Public Safety GIS Program Manager  
Deputy Mayor's Office of Public Safety