

Infrastructure in Cheltenham Township, PA

Challenges

- Waste Water System
- Act 537 Sewage Facilities Plan
- School District of Cheltenham Township Facilities

PA Act 537 Waste Water - Sanitary Sewer Plan Area

Plan Area: southeastern Berks and the lower PA Department of Environmental Protection and parts of plan area (highlighted).

Waste Water - Sanitary Sewer System

Other Jurisdictions in 537 Plan Area

- Franklin Township (Delaware Water & Light) provides waste-water treatment, collection, conveyed to "treatment" construction, with sewage that flows to and through Cheltenham.
- The other jurisdictions need to sign with the 537 plan, with a water commitment, need to pay parts of costs.

Waste Water - Sanitary Sewer System

Issues

- Transition to have same policies, agreements to water, facilities and to Department of Environmental Protection (PA Dept. of Env. Protection).
- DEP applied restrictions into 537 plan area.
- Lack of funding for investment of treatment, growth for 20 years.
- Multiple water treatment plants, separate financial resources, Cheltenham is a small town with small plan area.

School District of Cheltenham Township Facilities

Issues

- Older buildings
- Lack of planning
- Lack of maintenance and repairs, periodic upgrades
- Limited funding, need high level
- Limited ability to meet future needs



Building Projects

- Municipalities of various jurisdictions (Cheltenham, Cheltenham Boro, etc.)
- PA Dept. of Environmental Protection
- DEP (Department of Environmental Protection) requires 537 plan area
- DEP (Department of Environmental Protection) requires 537 plan area
- DEP (Department of Environmental Protection) requires 537 plan area
- DEP (Department of Environmental Protection) requires 537 plan area
- DEP (Department of Environmental Protection) requires 537 plan area
- DEP (Department of Environmental Protection) requires 537 plan area



School District Planning Issues

Issues in building program and other facilities

- Funding issues
- Lack of maintenance and repairs, periodic upgrades
- Limited funding, need high level
- Limited ability to meet future needs

Discussion/Conclusion

Issues in building program and other facilities

- Funding issues
- Lack of maintenance and repairs, periodic upgrades
- Limited funding, need high level
- Limited ability to meet future needs

Cheltenham Township

Founded by Quakers - William Penn era.

- **Eras**
 - Mill town (1690 - early 1900s)
 - Colored age (1870s to early 1900s)
 - Planned suburbs (late 1800s to WWII)
 - Post-war suburbs (post WWII - late 1900s)
 - Older inner ring suburbs (late 1900s to present)
- **Issues**
 - High taxes
 - Limited opportunity for tax base growth
 - Aging infrastructure

Waste Water - Sanitary Sewer System

Old Systems in Need of Improvements

- Estimated \$23.74 million construction cost for improvements.
- Caused by limited maintenance and limited periods of upgrades.
- System is governed by PA Department of Environmental Protection under PA Sewage Facilities Act, Act 537.
- Planning area includes parts of other municipalities.
- Cheltenham is "clean stream" from other sources of waste water.

Infrastructure in Cheltenham Township, PA

Challenges

- **Waste Water System**
 - Act 537 Sewage Facilities Plan
- **School District of Cheltenham
Township Facilities**

Cheltenham Township

- Founded by Quakers ~ William Penn era.
- **Eras**
 - Mill town (1690 - early 1900s)
 - Gilded age (1870s to early 1900s)
 - Railroad suburb (late 1800s to WWII)
 - Postwar suburb (post WWII - late 1900s)
 - Older inner ring suburb (late 1900s to present)
- **Issues**
 - High taxes
 - Limited opportunity for tax base growth.
 - Aging infrastructure

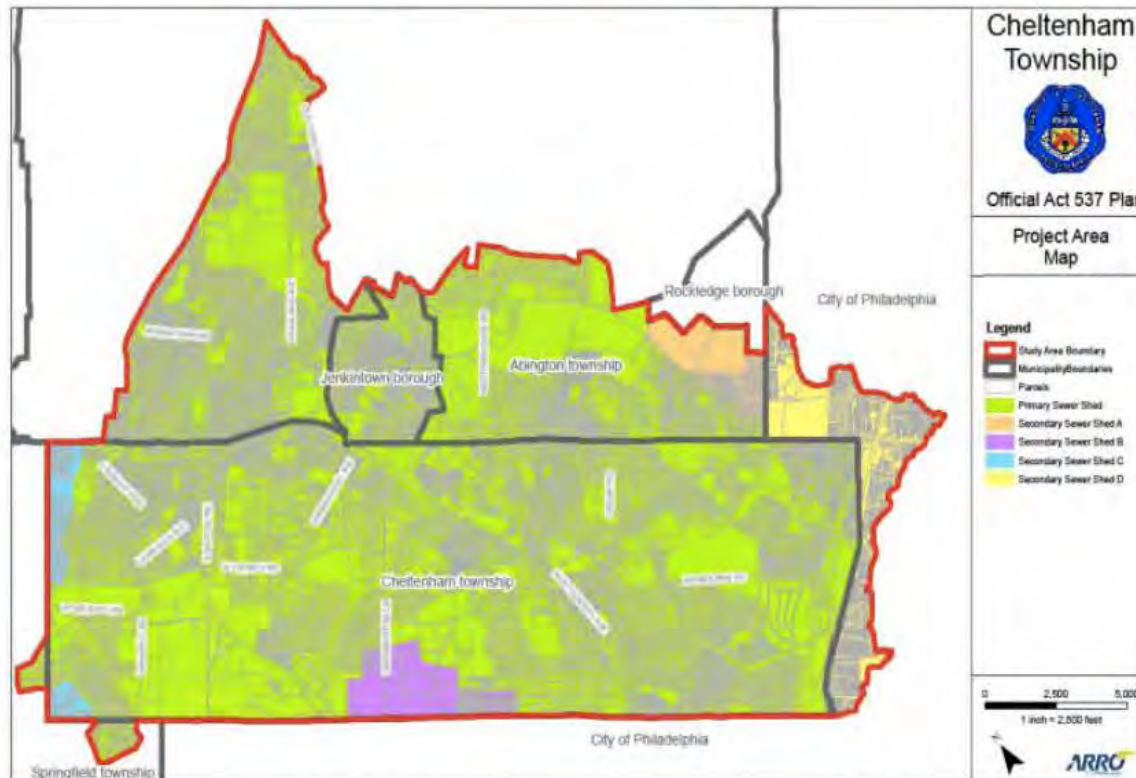


Waste Water - Sanitary Sewer System

Old System In Need of Improvements

- Estimated \$23.74 million construction cost for improvements.
- Caused by limited maintenance and limited periodic upgrades.
- **System is governed by PA Department of Environmental Protection under PA Sewage Facilities Act, Act 537.**
- Planning area includes parts of other municipalities.
- Cheltenham is "down stream" from other sources of waste water.

PA Act 537 Waste Water - Sanitary Sewer Plan Area



New Sewer connection limits are in place by PA Department of Environmental Protection until parts of plan are implemented.

Waste Water - Sanitary Sewer System


Other Jurisdictions in 537 Plan Area

- Philadelphia (Philadelphia Water Department) - processes waste water.
- Abington, Jenkintown, Springfield as "up stream" communities with sewage that flows to and through Cheltenham.
 - The other jurisdictions need to sign on to the 537 plan, and up stream communities need to pay parts of costs.



Waste Water - Sanitary Sewer System

Issues

- Cost (paid for by bonds, taxes and fees).
 - Agreements by various jurisdictions and PA Department of Environmental Protection (DEP)
 - DEP approves and oversees plan.
 - DEP approves new sewer capacity.
 - parts of the costs for the improvements in Cheltenham are paid for by Abington, Jenkintown and Springfield.
 - Philadelphia Water Department (PWD) approves level of sewage from Cheltenham in to PWD and Cheltenham pays PWD.
- 

School District of Cheltenham Township Facilities

Issues

- Older buildings.
- Lack of planning.
- Lack of maintenance and planned periodic upgrades.
- Limited funding and high taxes.
- Limited ability to raise taxes.
- Debt limits.

Cheltenham School District Building Timeline | Interactive Web Page - BETA

Directions/Information

- Design Revised 12.28.13 | Data Revised 12.28.13
- Different views (Timeline, Map) show different parts of the same data set in different ways.
- Search, click on items or drag on the timeline or map to find details.
- Some dates are approximate.
- See [History and Development of the School District of Cheltenham Township](#) by Alexander W. Scott, where part of the data for this Web page was developed.
- Designed by [David L. Cohen, AICP](#).

TIMELINE • MAP

Search 8 Items filtered from 26 originally ([Reset All Filters](#))

Title

- Administration Building (was formerly Lynnewood Elementary, which opened in 1952)
- Cedarbrook Middle School
- Cheltenham Elementary - Rebuilt
- Cheltenham High School Current
- Elkins Park School
- Glenside Elementary - Rebuilt
- Modulars at Elkins Park School Campus
- Myers Elementary

Category

- Administration Building
- Elementary School
- High School
- Junior High School
- Middle School

Timeline visualization showing school building events from 1930 to 2030. Key events include Myers Elementary (1930s), Cedarbrook Middle School (1950s), Cheltenham High School Current (1960s), Elkins Park School (1970s), Administration Building (was formerly Lynnewood Elementary, 1952), Glenside Elementary - Rebuilt (1980s), Modulars at Elkins Park School (1990s), and Cheltenham Elementary - Rebuilt (2000s).

Active School District Building 1

Yes

No

Type

- Current Building - Administration Use
- Current Building - School Use

Era Built

- 1930-1940
- 1941-1950

<http://www.swingingsammy.com/cheltenhamsd/csdbuildinghistory.html>

Building Projects

- **Renovated** Myers Elementary (2009-2013)
- **New** Glenside Elementary (2010-2011)
- **New** Cheltenham Elementary (2011-2013)
- **New** Wyncote Elementary (2013-2015)
- Cedarbook Middle School (**future unclear; proposed modulars**)
(to be closed Jan./Feb. 2014)
- Elkins Park School
(needs major renovations or to be rebuilt)
- Cheltenham High School
(needs major renovations)
- Administration Buildings
(new facility needed)

Same basic problems not resolved
10 years later.

December 2013 -->

A screenshot of a news article on Philly.com. The page features the Philly.com logo at the top right, with navigation links for Home, News, Sports, Entertainment, Business, Food, Lifestyle, Health, and Marketplace. A search icon is also present. Below the navigation is a 'Collections • Mold' link. The main headline reads 'The mold wins: Cedarbrook Middle School to close'. To the right of the headline are social media sharing buttons for Like (16), Tweet (0), +1 (0), and Email. Below the headline, it says 'Ad muted.' and 'By Jessica Parks, Inquirer Staff Writer'. The post date is 'POSTED: December 16, 2013'.

September 2003 -->

A screenshot of a news article on Philly.com. The page features the Philly.com logo at the top right, with navigation links for Home, News, Sports, Entertainment, Business, and Food. Below the navigation is a 'Collections • Mold' link. The main headline reads 'Districts battling mold and deadlines Schools in Cheltenham and North Penn should be at least mostly ready today. One Pottstown school is behind.' Below the headline, it says 'Ad muted.' and 'By Connie Langland INQUIRER STAFF WRITER'. The post date is 'POSTED: September 08, 2003'.

School District Planning Issues

- Focus on building design and not planning.
- Lack of long-term planning.
 - Buildings designed as one-off projects.
 - Lack of site design planning in terms of broader community issues.
 - No capital budget or long-term facilities plan.
 - Demographic study recently completed after four major building projects had been built or designed.
- Improvements made in response to crises without capital planning and lack of systematically upgrading and maintaining buildings.
- Limited options for new building locations.

Presentation Conclusion

- Under maintained aging infrastructure will eventually fail.
- Lack of long-term planning leads to planning after a crisis or results in working on a project by project basis.
- Funding restraints; the more you wait to fix infrastructure the more it costs to replace it.
- Lack of planning expertise and capacity.
- Infrastructure often not viewed as a critical need until a crisis develops.





January 2014



Environmental Planning at DVRPC

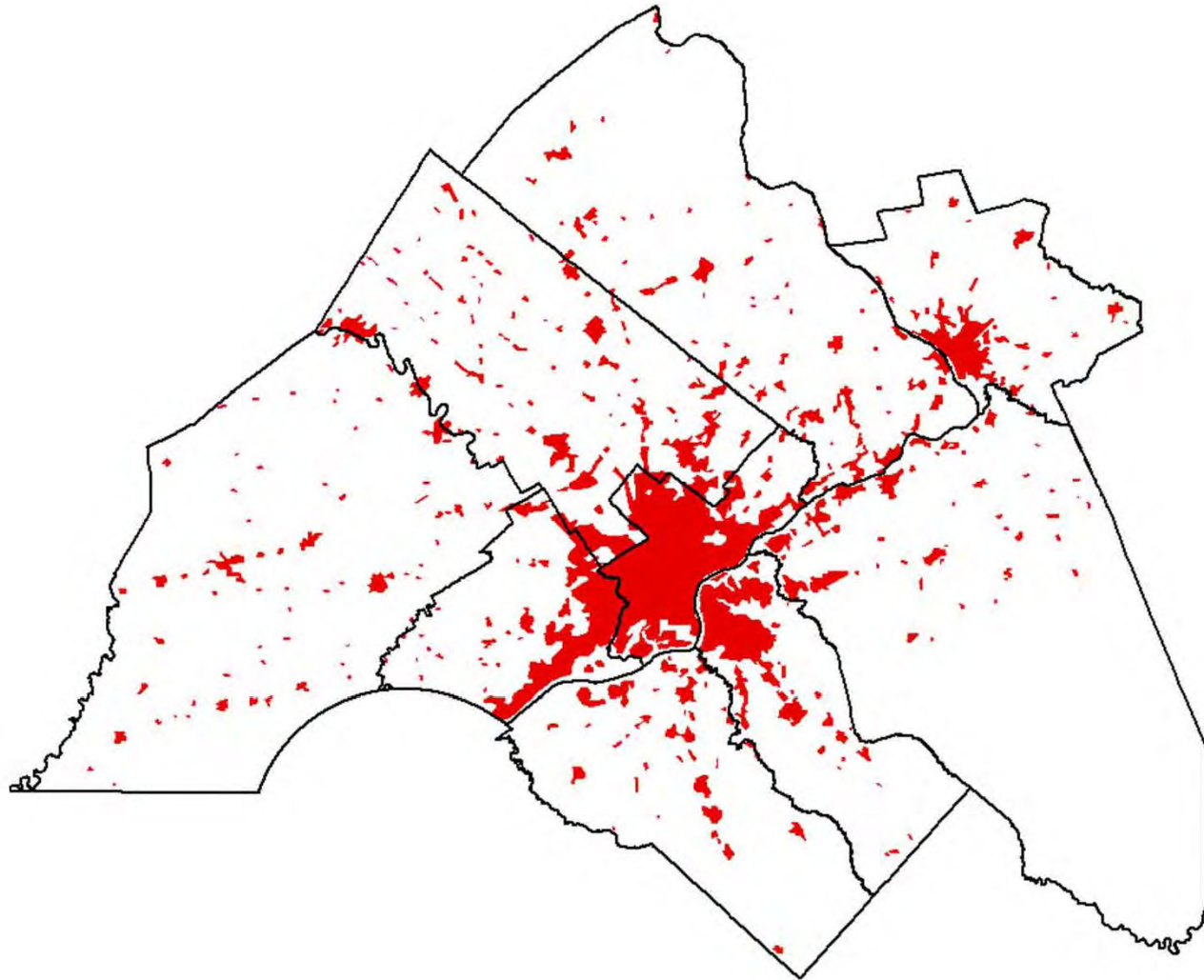
Public Participation Task Force

*Presented by:
Christopher Linn, AICP
Manager, Office of Environmental Planning*

Environmental Planning Initiatives

- Regional Data Collection and Coordination
- Technical and Financial Assistance
- Regional Green Infrastructure and Open Space Planning
- Regional Trail Network Development
- Municipal Planning
- Climate Change Adaptation
- Coastal Zone Management

1930

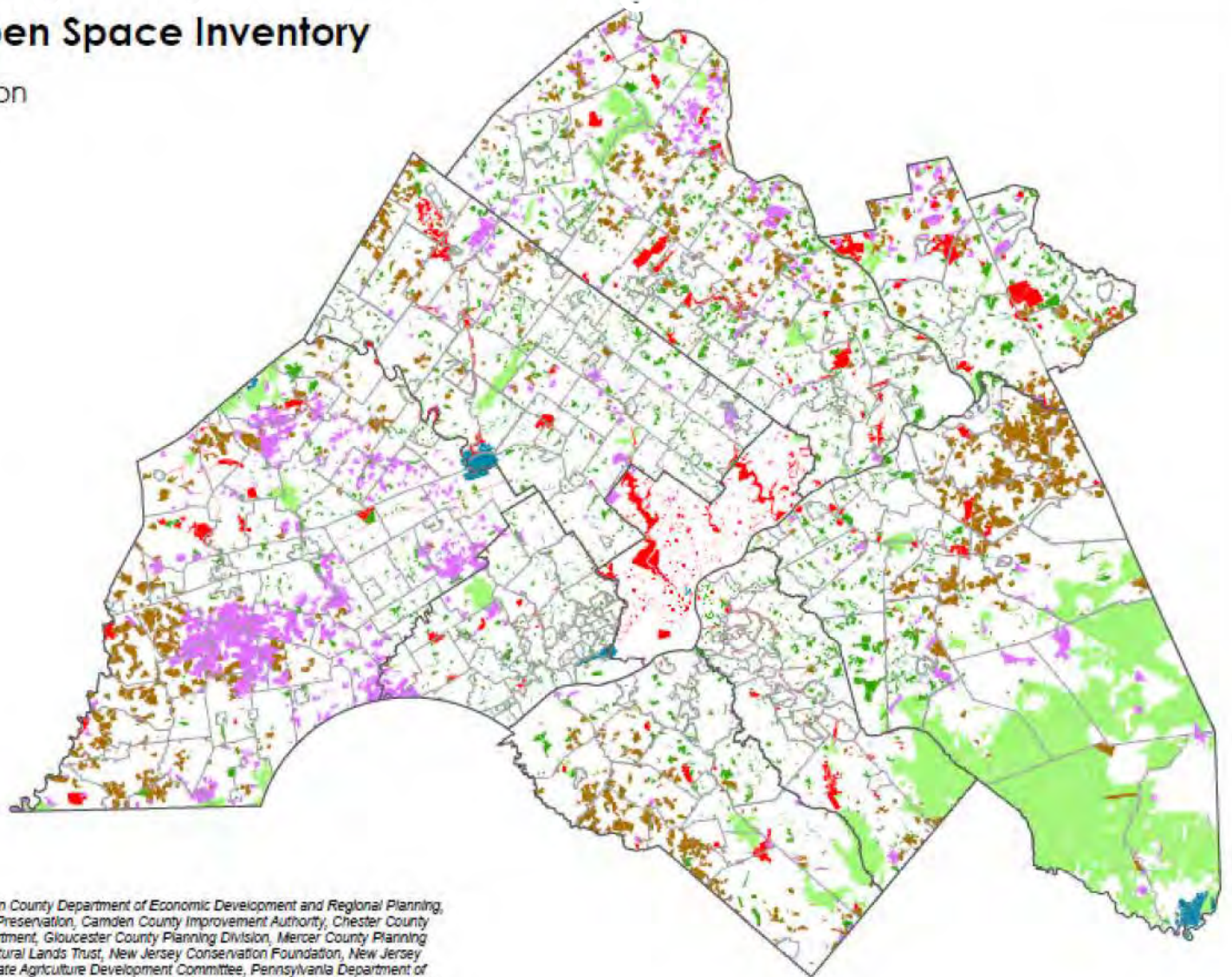
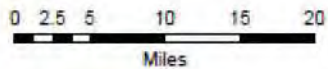


3.3 million people
222,000 acres developed

2011 Protected Open Space Inventory

Nine-County DVRPC Region

- Federal
- State
- County
- Municipal
- Nonprofit
- Preserved Farmland
- County Boundaries
- Municipal Boundaries



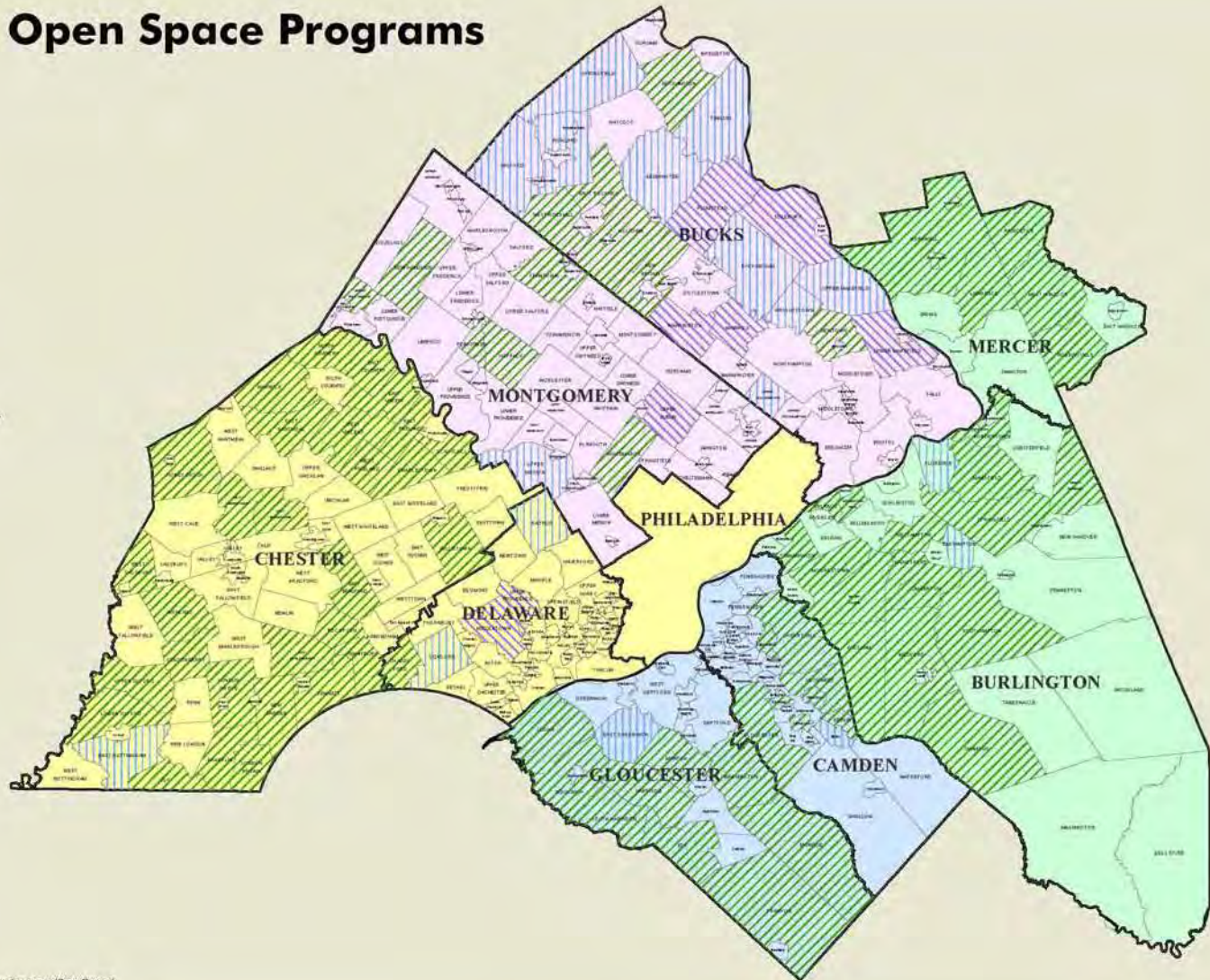
Sources: Bucks County Planning Commission, Burlington County Department of Economic Development and Regional Planning, Camden County Division of Open Space and Farmland Preservation, Camden County Improvement Authority, Chester County Planning Commission, Delaware County Planning Department, Gloucester County Planning Division, Mercer County Planning Division, Montgomery County Planning Commission, Natural Lands Trust, New Jersey Conservation Foundation, New Jersey Department of Environmental Protection, New Jersey State Agriculture Development Committee, Pennsylvania Department of Conservation and Natural Resources, Philadelphia City Planning Commission, Philadelphia Department of Parks and Recreation

Locally Funded Open Space Programs

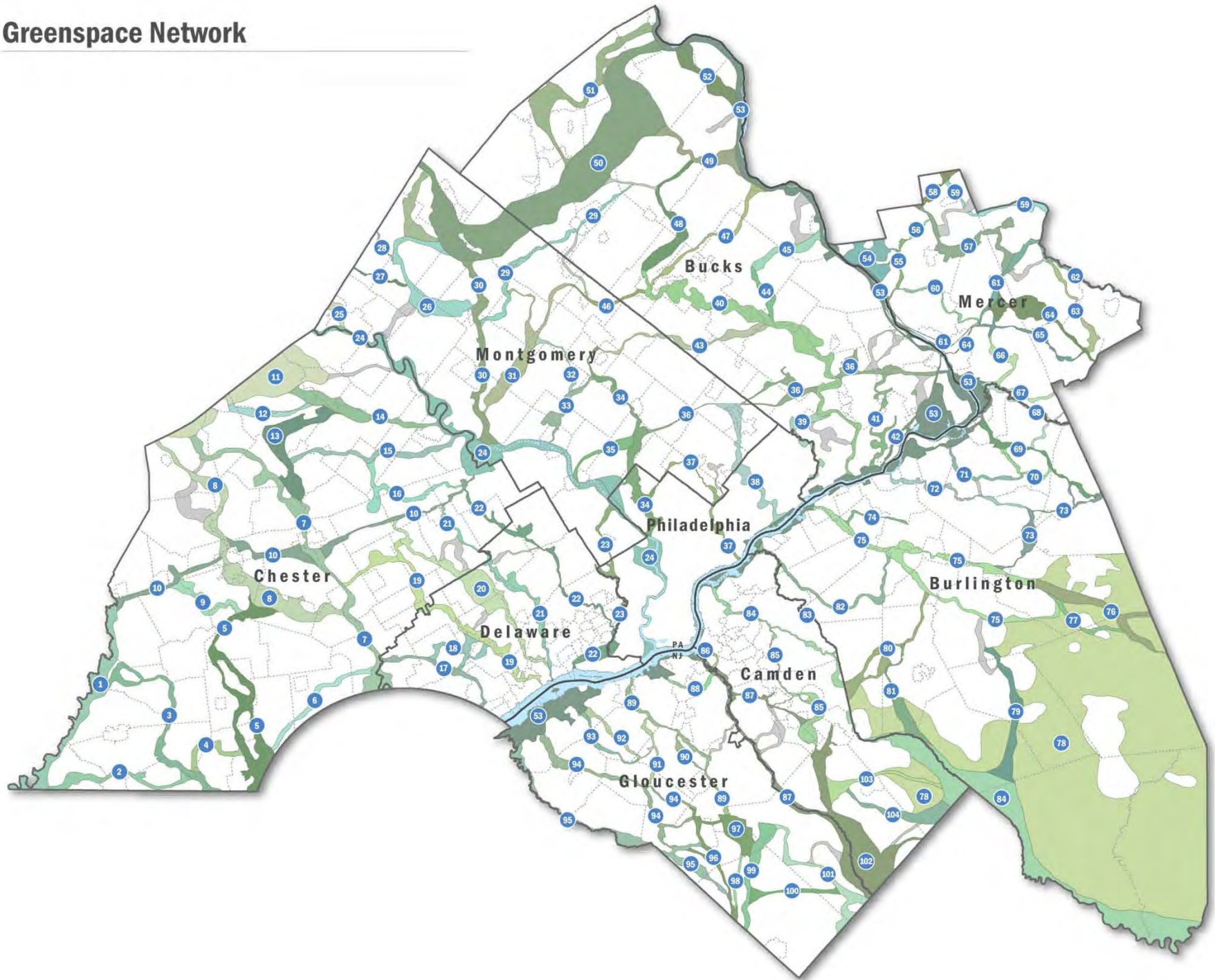
2013 Active Programs

-  Municipal Funding - Dedicated Tax
-  Municipal Funding - Bond
-  Municipal Funding - Tax and Bond
-  County Funding - Dedicated Tax
-  County Funding - Bond
-  County Funding - Tax and Bond
-  County Funding - Other

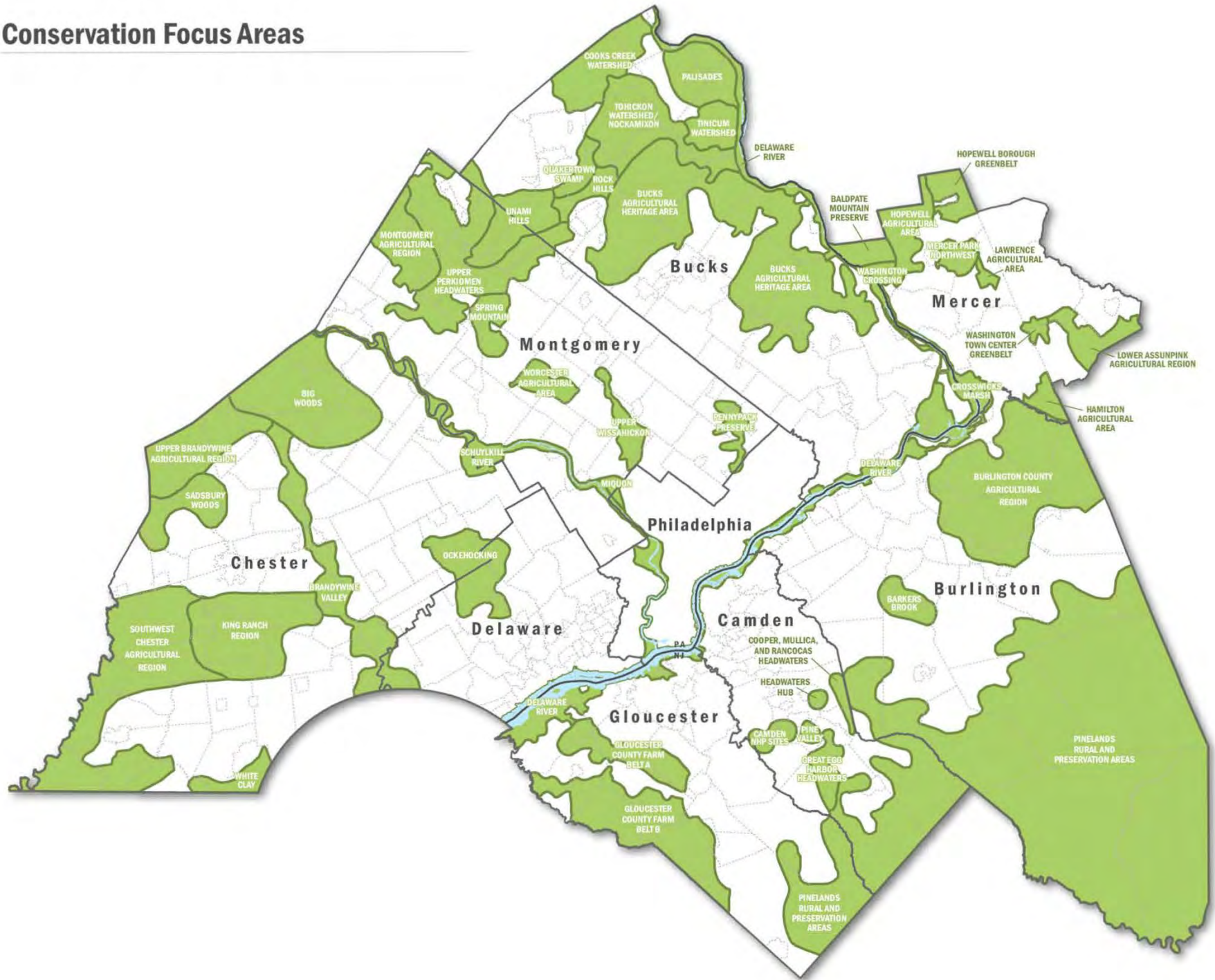
Note: Municipalities that previously issued bonds dedicated for open space and exhausted the funds are not shown.



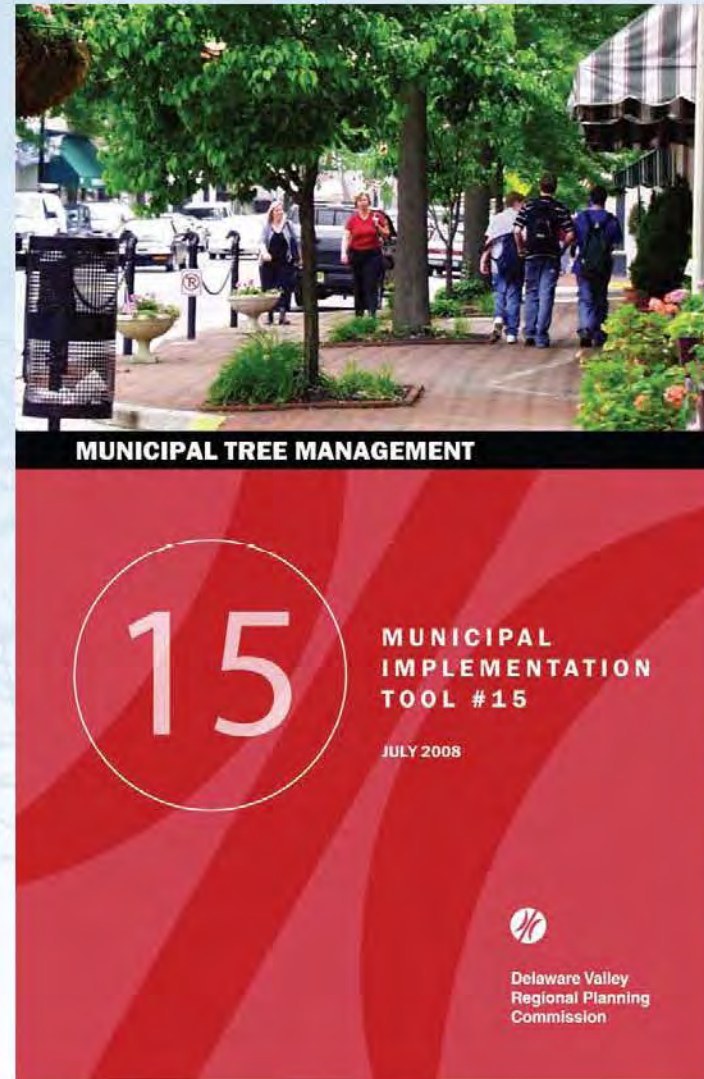
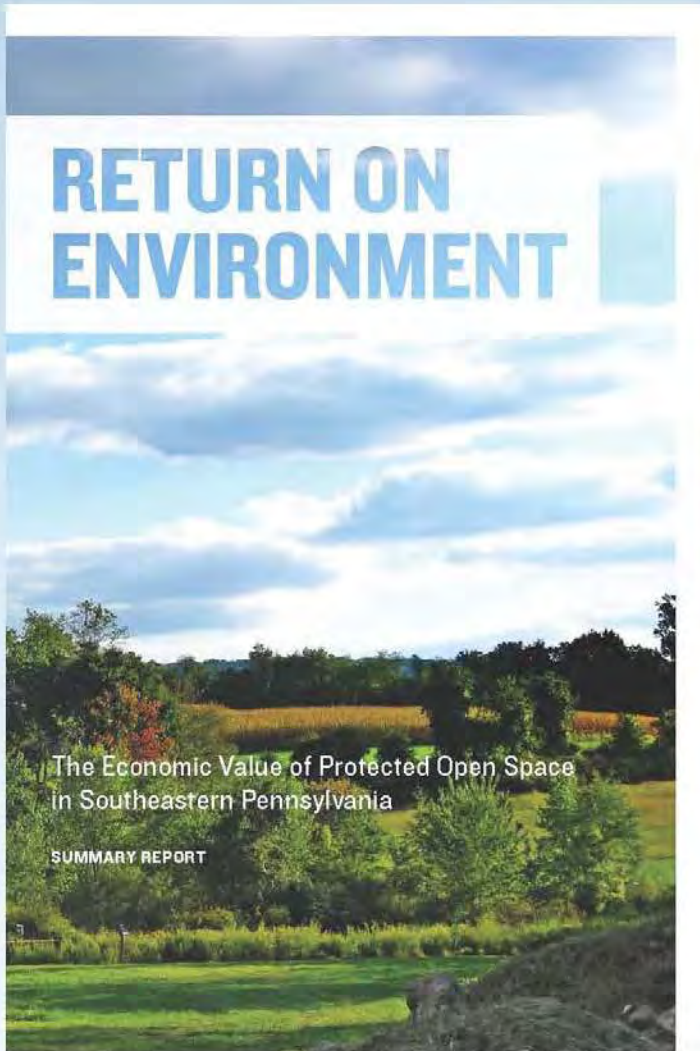
Greenspace Network



Conservation Focus Areas

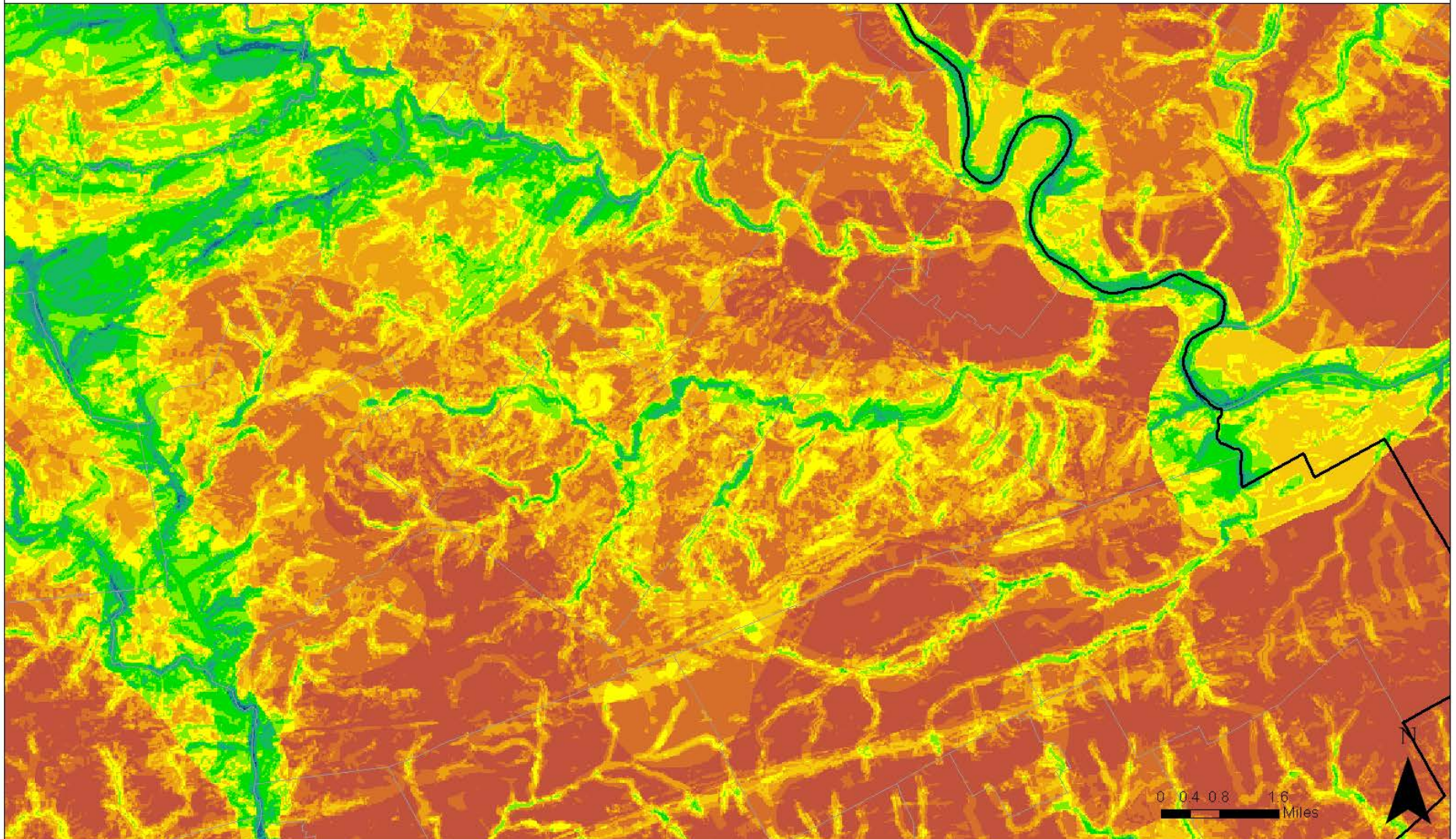


Grants and Technical Assistance



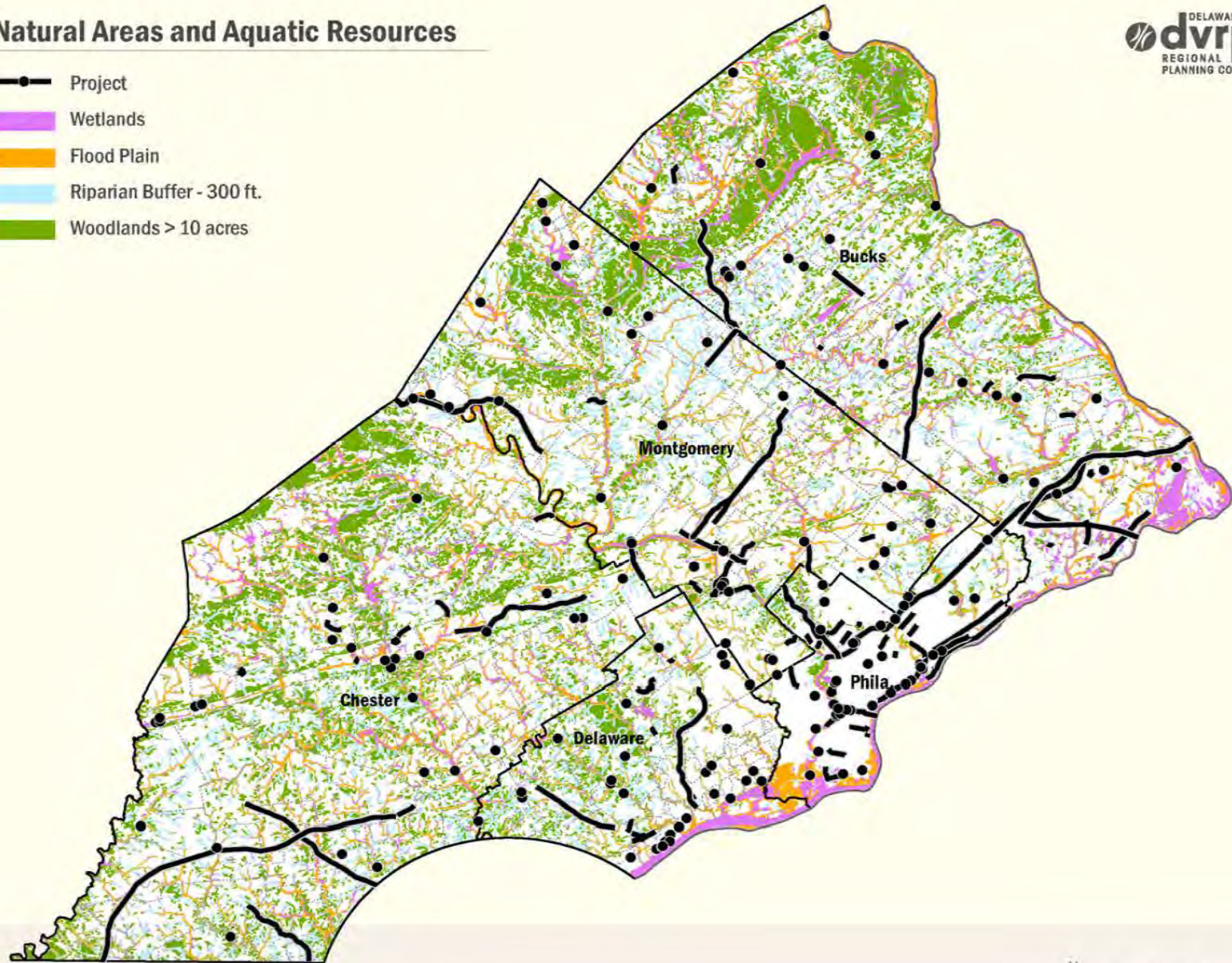
Green Infrastructure Screening Tool

Green Infrastructure Screening

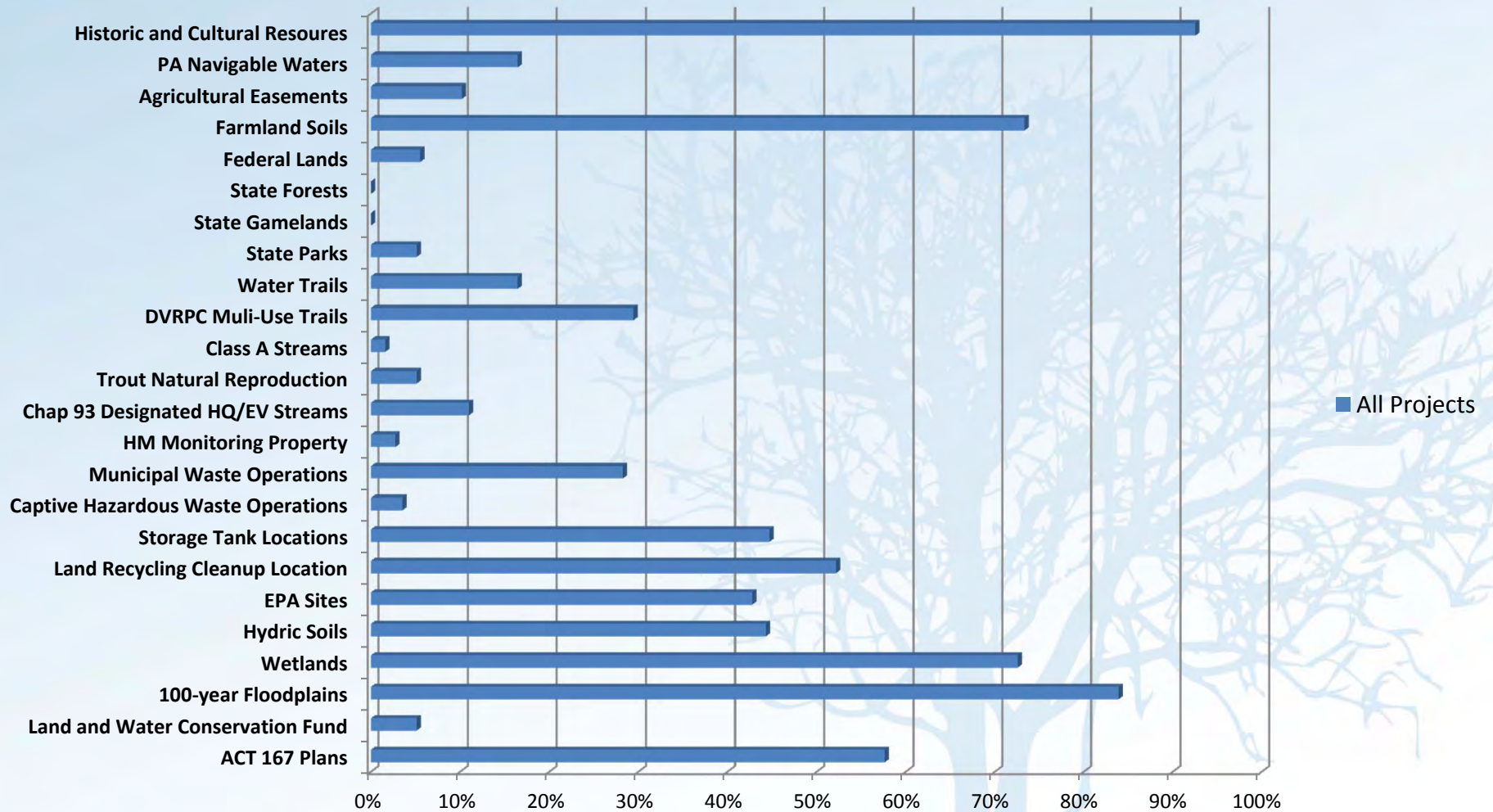


Natural Areas and Aquatic Resources

- Project
- Wetlands
- Flood Plain
- Riparian Buffer - 300 ft.
- Woodlands > 10 acres



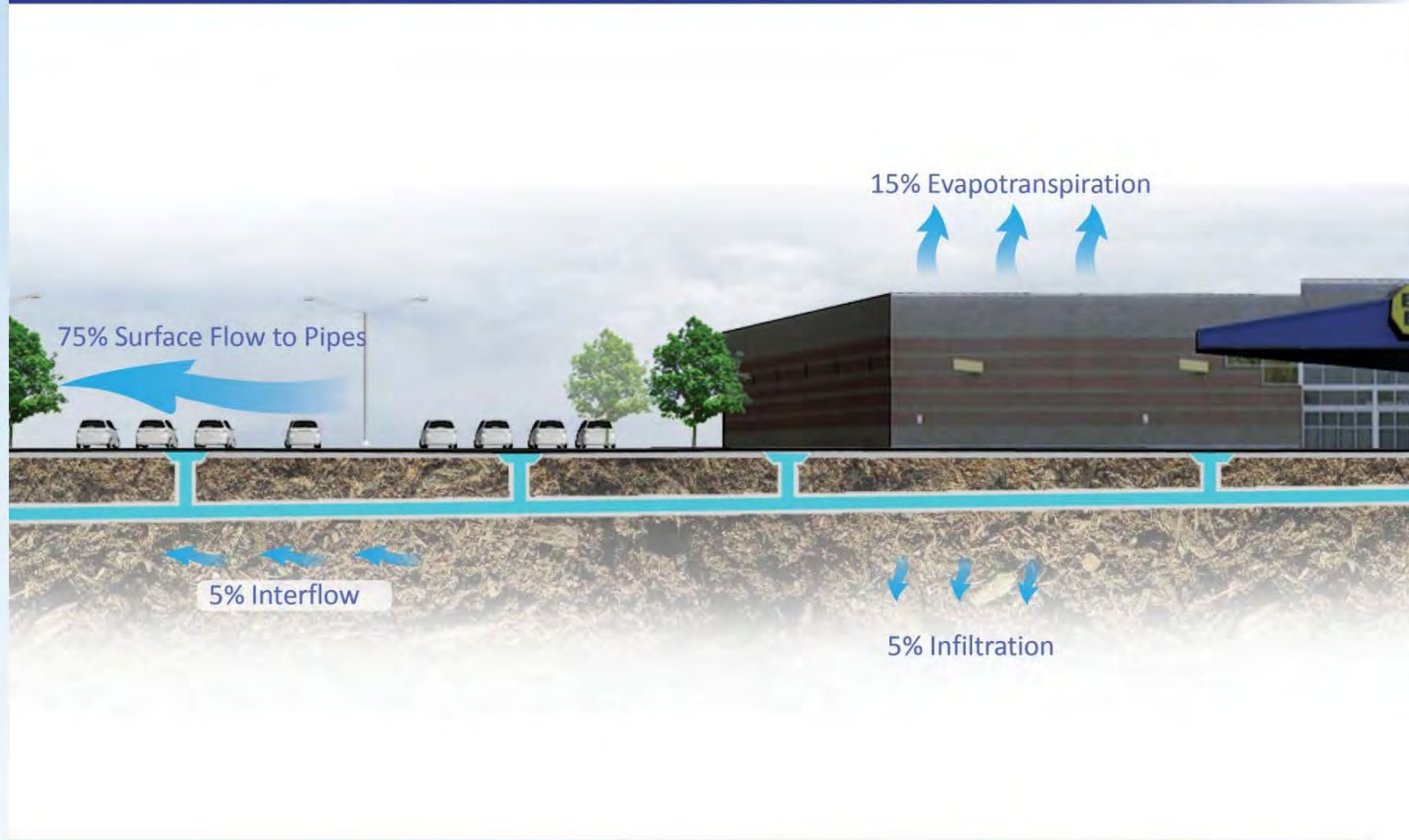
TIP Project Screening Analysis



Urban Green Stormwater Infrastructure

The Urbanized Landscape

Moving Towards Watershed Destruction



Green Stormwater Infrastructure

Multiple Shades of Green

Level 3- Landscape Actively Manages Stormwater Runoff



ASLA 2011 ANNUAL MEETING AND EXPO



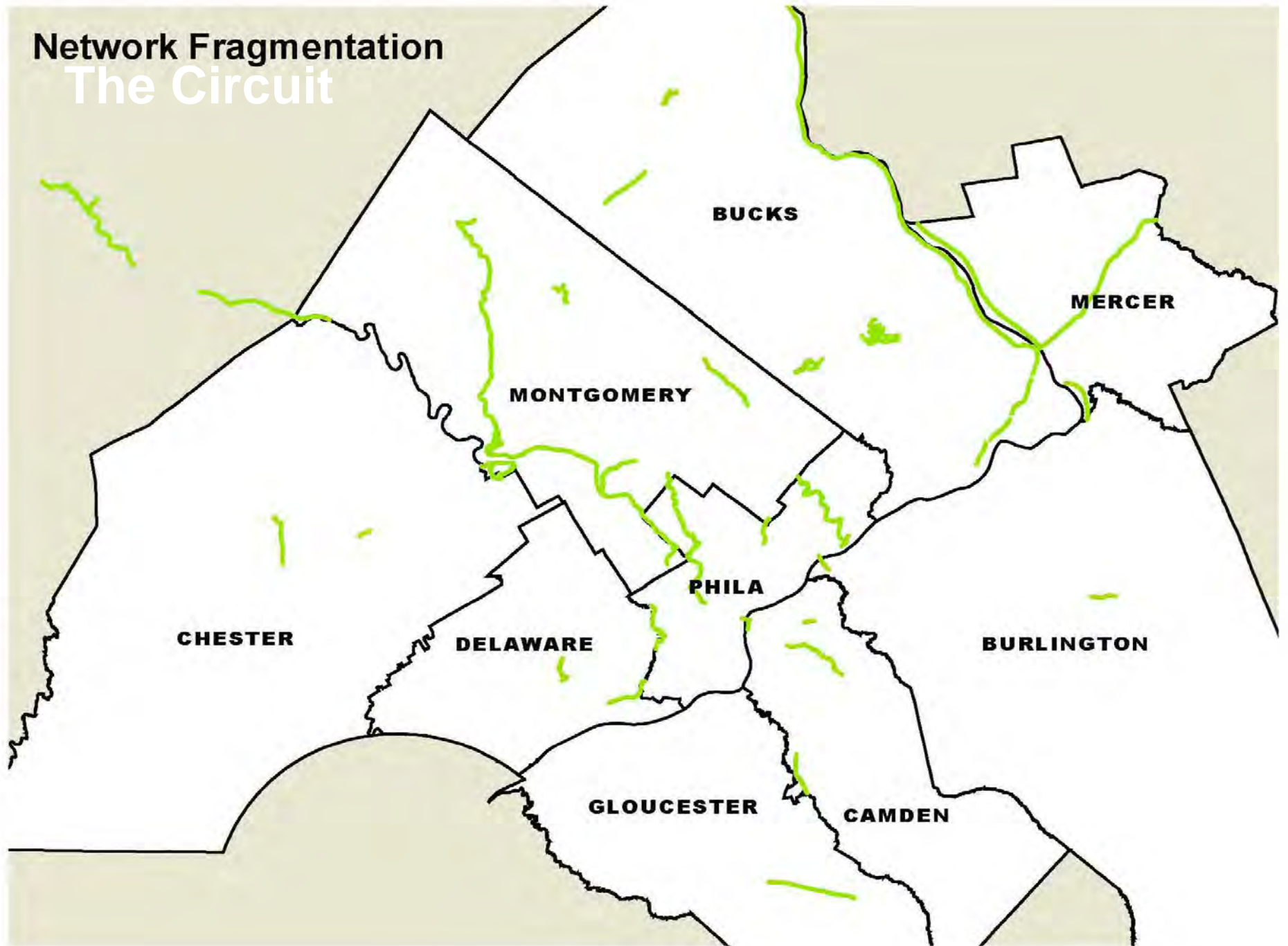
Slide courtesy Kevin Perry, Nevue Ngan and Associates

Regional Trail Network Development

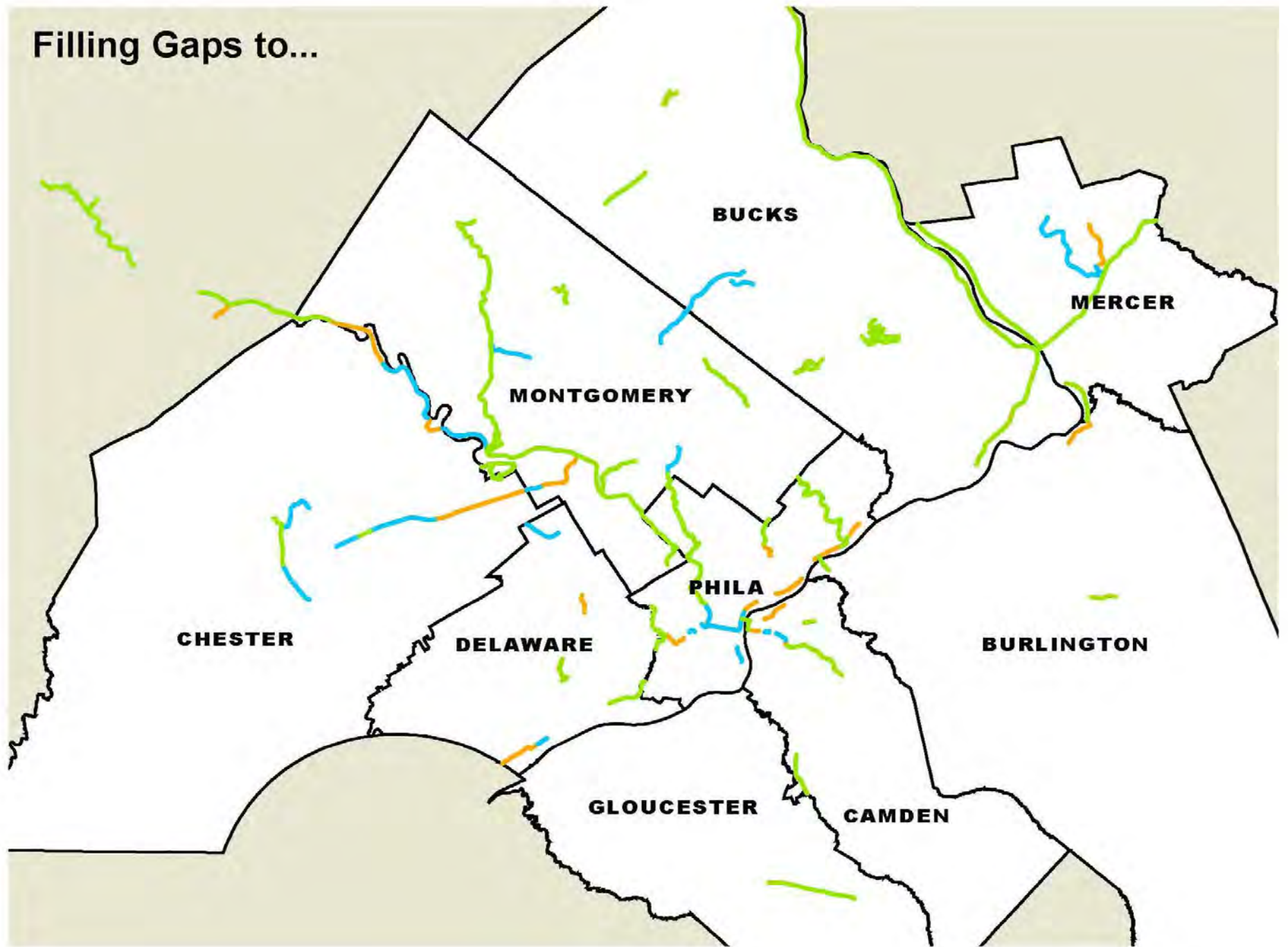


Network Fragmentation

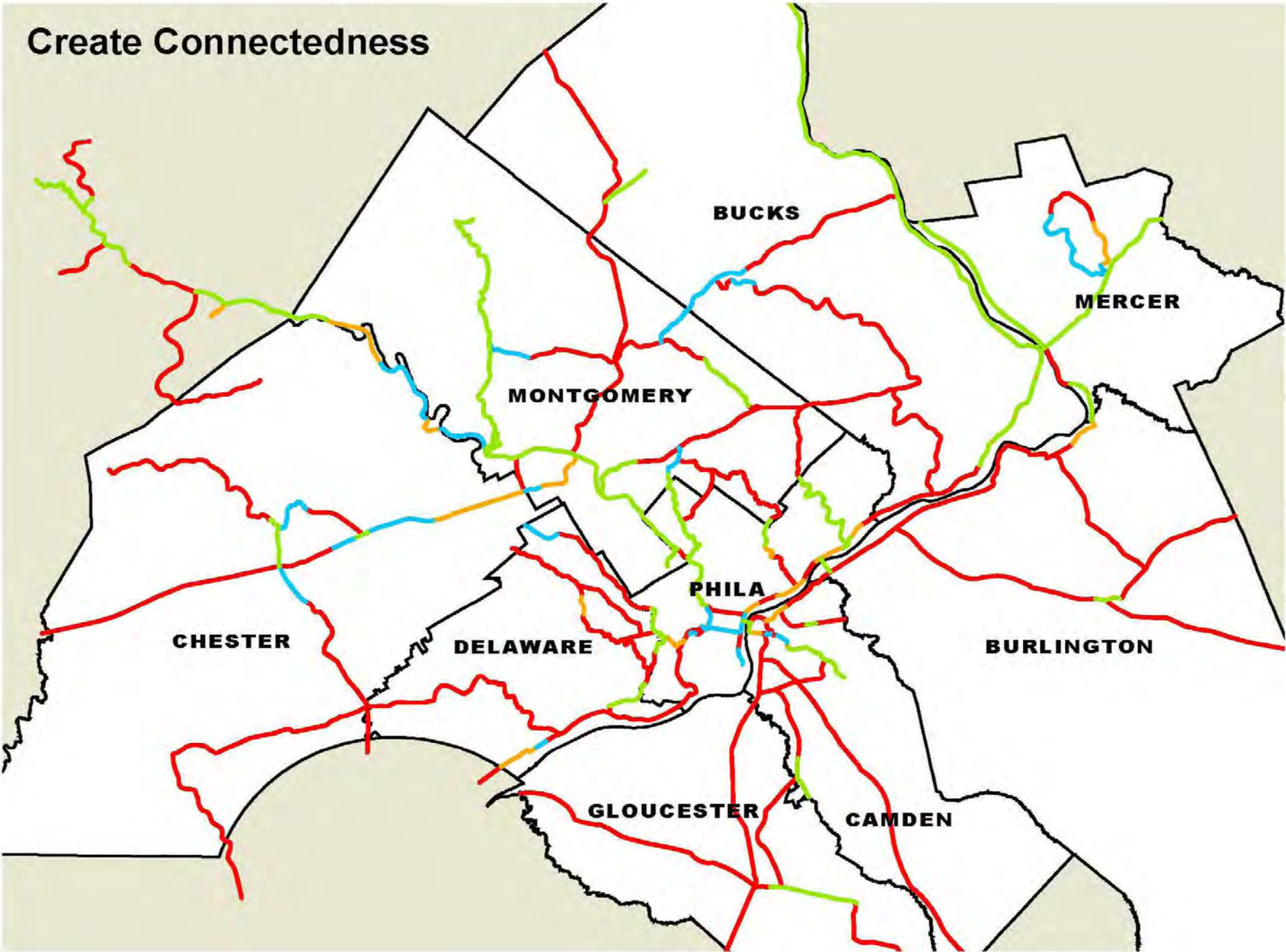
The Circuit



Filling Gaps to...



Create Connectedness



2.16%

Philadelphia has the highest rate of bicycle commuters of the ten largest cities in America, nearly double of second place Chicago.





ConnectTheCircuit.org



the
Circuit

Greater Philadelphia's
Regional Trail Network

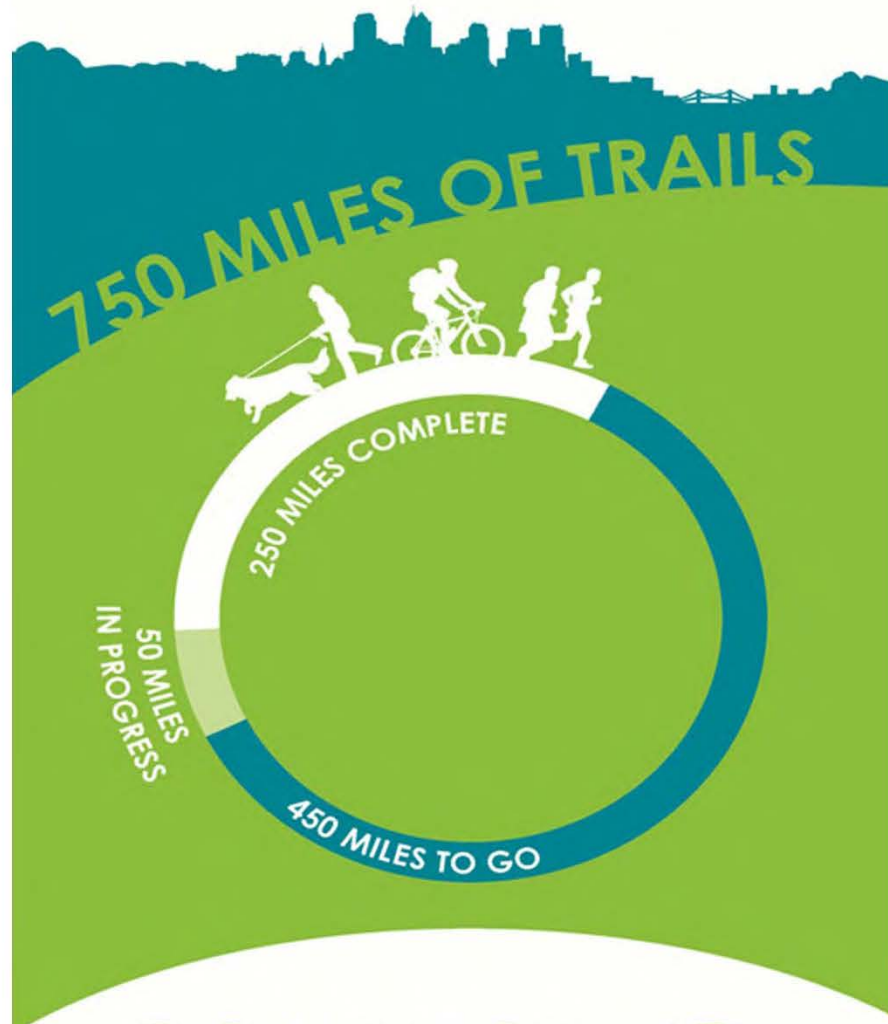


the Circuit

Greater Philadelphia's
Regional Trail Network

- Existing Trails
- Trails in Progress
- Planned Trails





CONNECT
the
Circuit 

— ConnectTheCircuit.org —



REQUEST FOR EXPRESSIONS OF INTEREST (REI)



DVRPC REGIONAL TRAILS PROGRAM



A new grant program to further the creation of Greater Philadelphia's regional multi-use trails network.

Expressions of Interest
due Friday, July 8th, 2011

Delaware Valley Regional
Planning Commission (DVRPC)
190 N. Independence Mall West, 8th Floor
Philadelphia, PA 19106

TACONY CREEK TRAIL – COMPLETION



PENN STREET TRAIL



Manayunk Bridge



**THE GREATER PHILADELPHIA
PEDESTRIAN & BICYCLE SUMMIT 2013**



Spring Garden Street Greenway

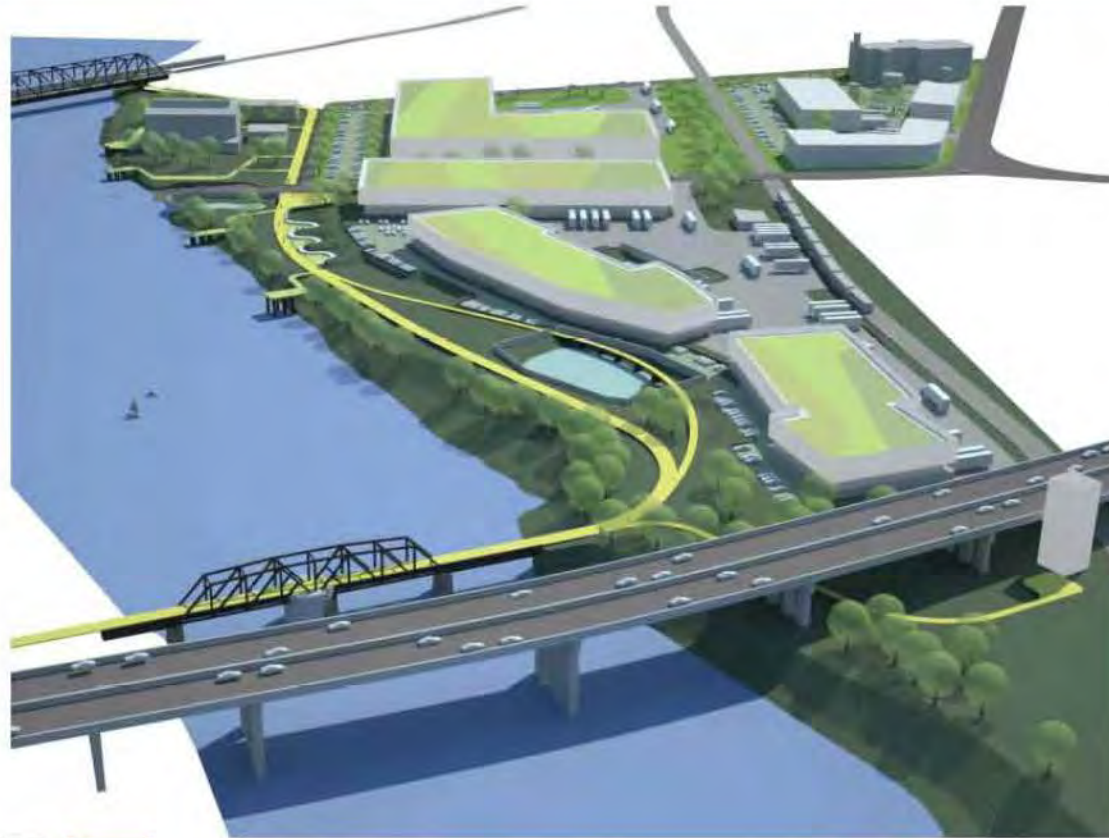


**THE GREATER PHILADELPHIA
PEDESTRIAN & BICYCLE SUMMIT 2013**



MAYOR'S OFFICE OF
**Transportation
and Utilities**

Grays Ferry Crossing



CHARLES
LOOMIS
CHARLES
MCAFEE
ARCHITECTS



COMMUNITY DESIGN
COLLABORATIVE

43

THE GREATER PHILADELPHIA
PEDESTRIAN & BICYCLE SUMMIT 2013

DELAWARE VALLEY
dvrpc
REGIONAL
PLANNING COMMISSION

MAYOR'S OFFICE OF
Transportation
and Utilities

the Circuit COMMITMENT

— \$250 MILLION —

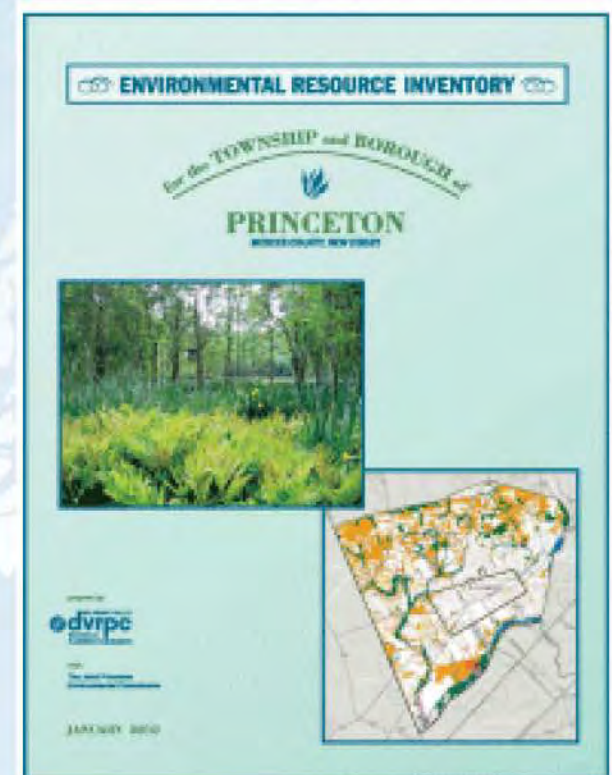
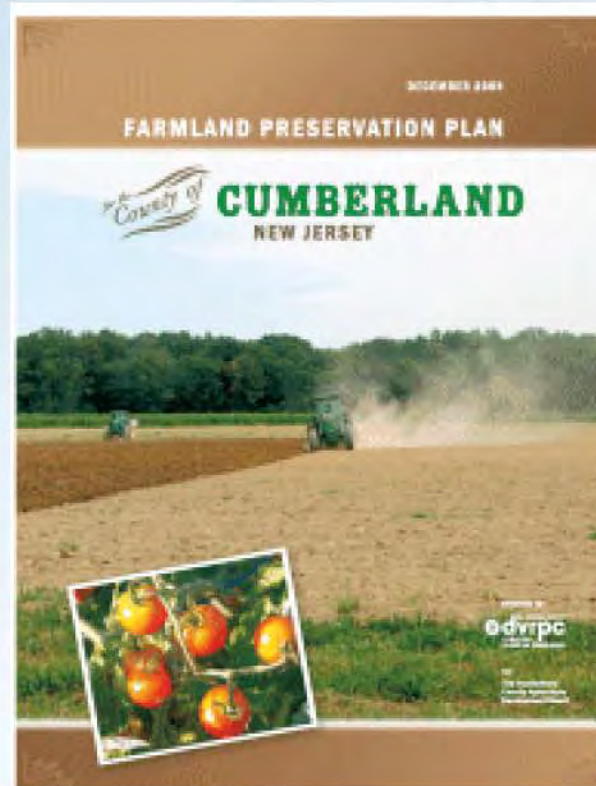
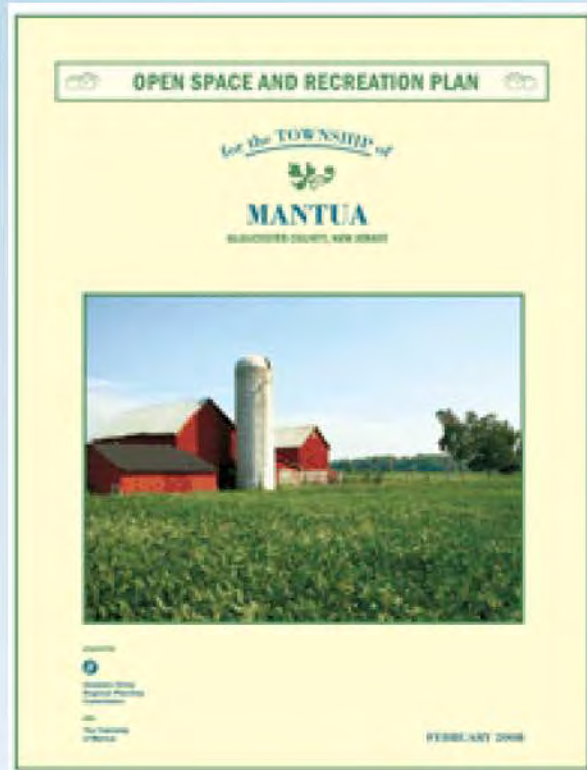
450 MILES TO GO

— \$12.5 MILLION
OVER 20 YEARS —

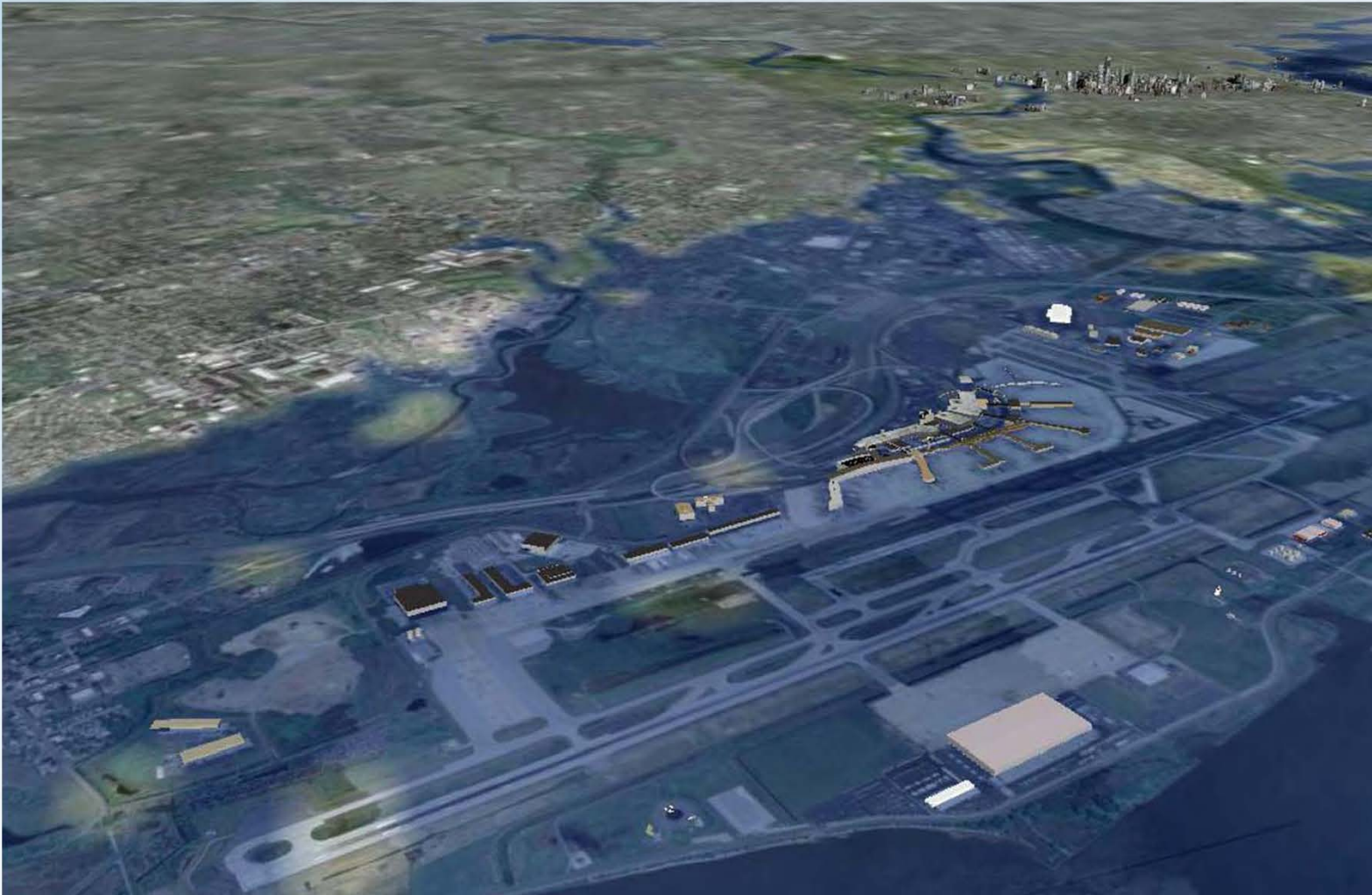
250 MILES COMPLETE



Municipal Planning Studies



Climate Change Resiliency



Storm Surge of Approximately 10 feet

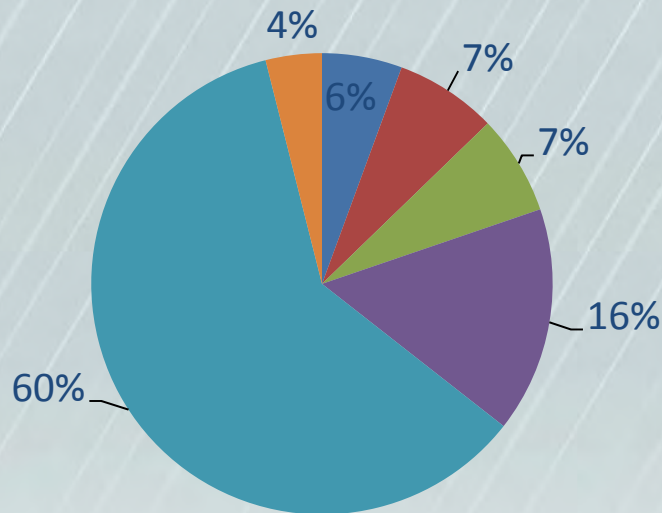
Climate Change Adaptation



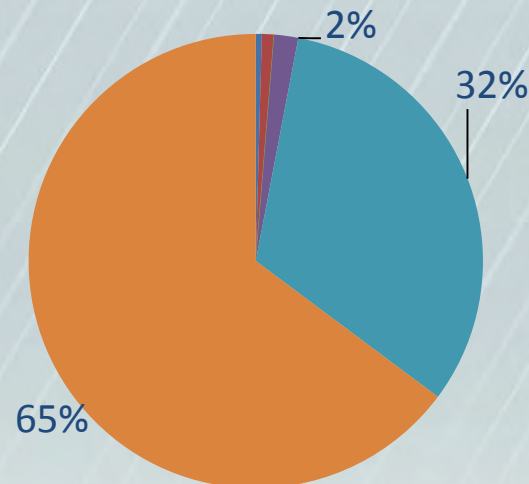
SEPTA and Climate Hazards

SOURCE OF WEATHER-RELATED DELAY

Delay Minutes



Annulments



- Heat
- Winter storm
- Heavy rain, wind
- Summer thunderstorm
- Snow
- Tropical Storm/Hurricane

Chester City Climate Change Project Team



Ann Faulds
Jaclyn Rhodes



Chris Linn
Liz Compitello



Bill Payne



Michael Dunn



Sari Rothrock



Dana Spindler



Karen Holm

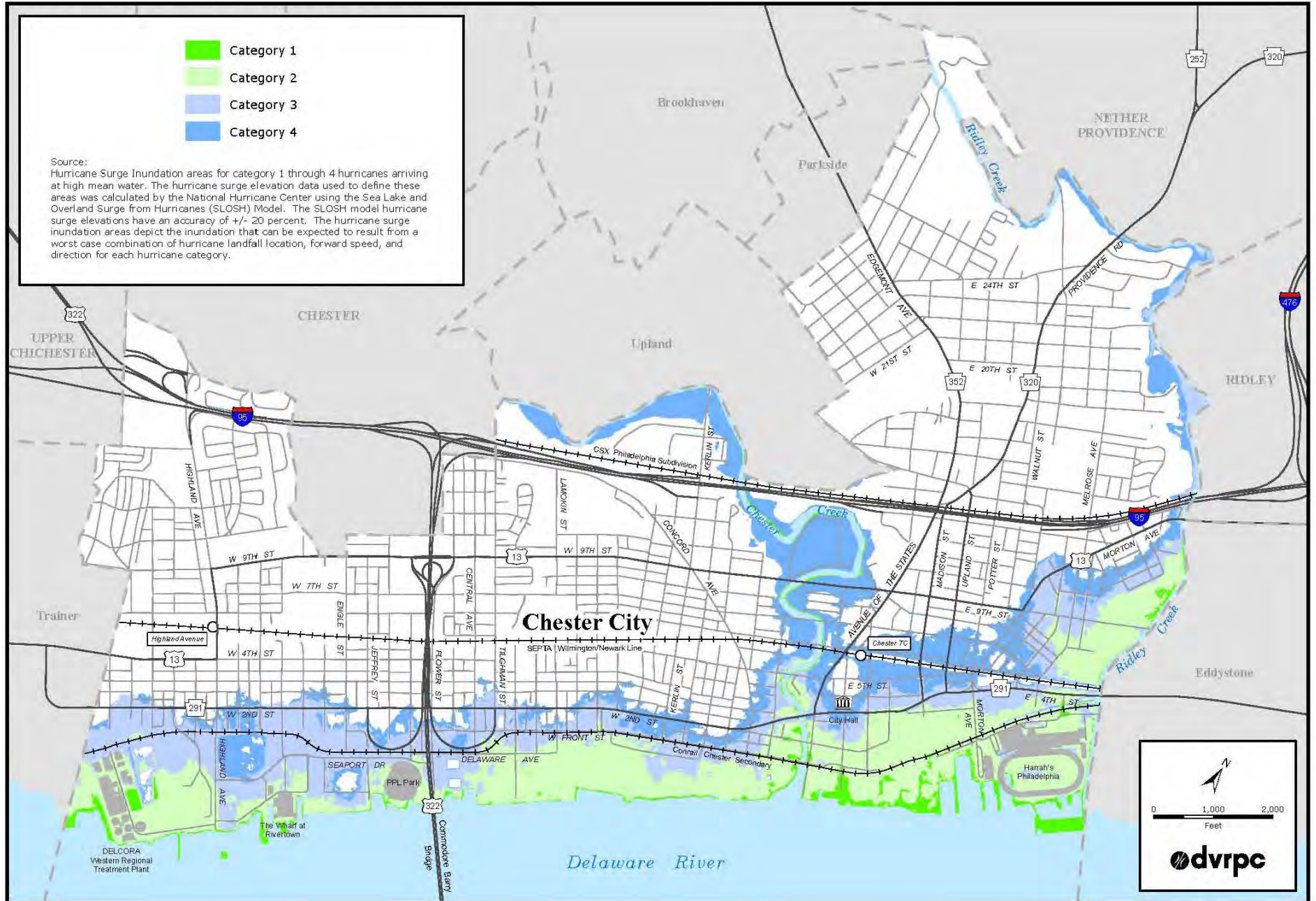


NOAA Coastal
Services Center

Hurricane Surge Inundation

- Category 1
- Category 2
- Category 3
- Category 4

Source:
Hurricane Surge Inundation areas for category 1 through 4 hurricanes arriving at high mean water. The hurricane surge elevation data used to define these areas was calculated by the National Hurricane Center using the Sea Lake and Overland Surge from Hurricanes (SLOSH) Model. The SLOSH model hurricane surge elevations have an accuracy of +/- 20 percent. The hurricane surge inundation areas depict the inundation that can be expected to result from a worst case combination of hurricane landfall location, forward speed, and direction for each hurricane category.



0 1,000 2,000
Feet

dvrpc



Courtesy of Temple Studio Project

Coastal Zone Management



Coastal Zone Management Act





Questions?

Christopher Linn, AICP
Manager, Office of Environmental Planning
215.238.2873
Clinn@dvrpc.org